


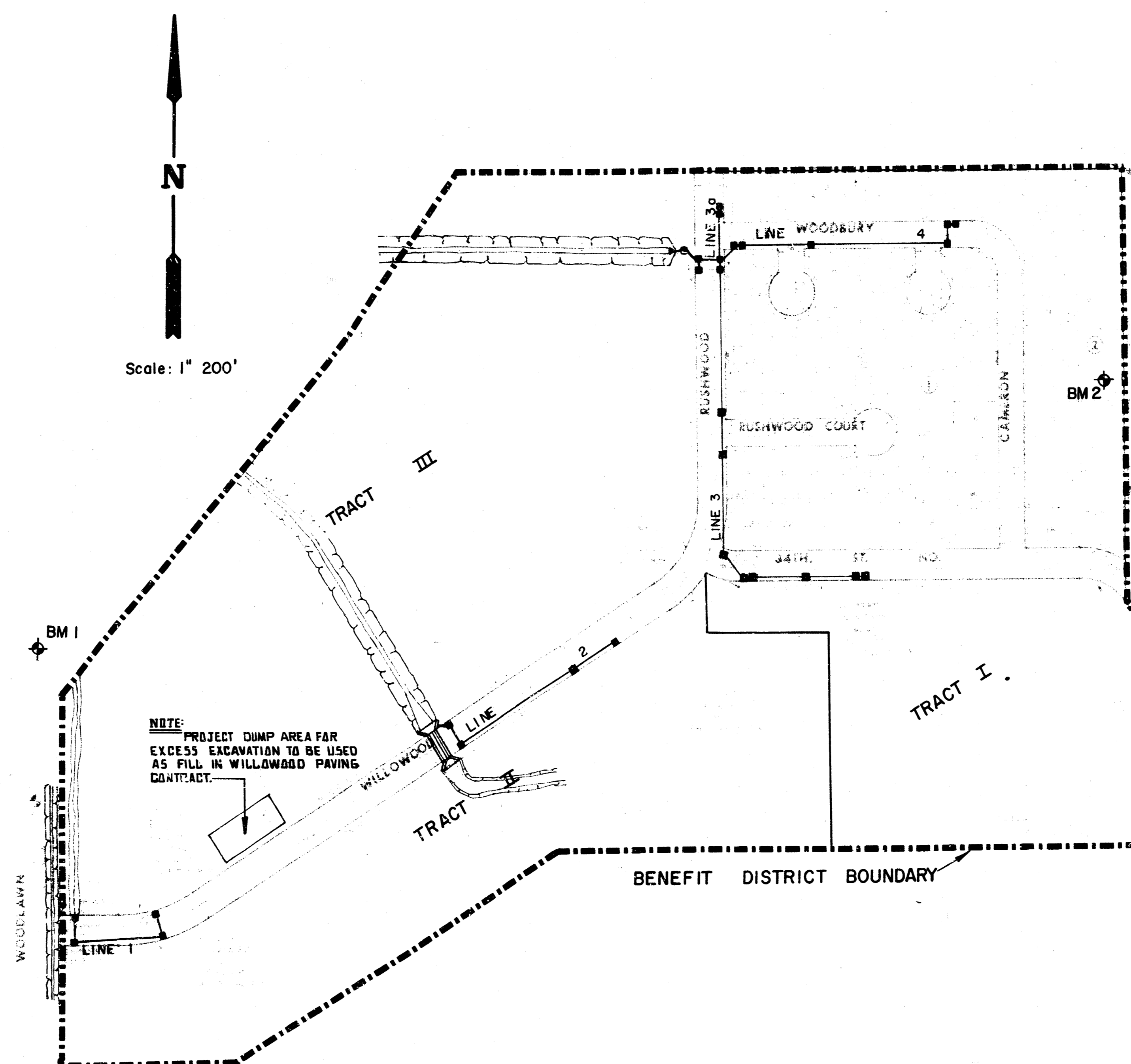
**STORM SEWER PLANS FOR  
SWS. NO. 259  
WILLOWOOD  
PROJECT NO.  
468-76-245-81339-000-000-001  
CITY OF WICHITA, KANSAS  
MIKE LINDEBAK, CITY ENGINEER  
AUGUST, 1984**

**GENERAL NOTES**

1. THE TOPS OF INLETS AND MANHOLES AS NOTED ON THE PLANS MAY VARY SO AS TO MEET PROPOSED TOP OF CURB ELEVATIONS OR PAVEMENT ELEVATIONS. THE FIELD ENGINEER SHALL LOCATE INLETS AND MANHOLES WITH REFERENCE TO PROPOSED PAVING PLANS OF THE PERTINENT STREETS.
2. ALL CONCRETE SHALL BE STANDARD PAVING MIX UNLESS OTHERWISE NOTED.
3. CONTRACTOR SHALL AVOID UNCOVERING EXISTING WATER LINES UNLESS ABSOLUTELY NECESSARY. UNCOVERING SHALL BE DONE ONLY IN THE PRESENCE OF A WATER DEPARTMENT ENGINEER.
4. THE CONTRACTOR SHALL BE RESPONSIBLE FOR PRESERVING PROPERTY IRONS. THE CONTRACTOR SHALL BE REQUIRED TO RE-ESTABLISH ANY PROPERTY IRONS WHICH ARE DAMAGED OR DESTROYED BY HIS CONSTRUCTION OPERATIONS. SUCH IRONS SHALL BE RE-ESTABLISHED BY A LICENSED LAND SURVEYOR OR A LICENSED PROFESSIONAL ENGINEER IN ACCORDANCE WITH STATE LAWS.
5. TREES TO BE REMOVED ARE MARKED . ALL TREES WHICH IN THE OPINION OF THE FIELD ENGINEER CAN BE SAVED SHALL BE SAVED.
6. CONTRACTOR SHALL NOTIFY THE UTILITY COMPANIES OF CONSTRUCTION SCHEDULING.
7. EXISTING UTILITIES AND THEIR LOCATIONS, AS SHOWN ON THE PLANS, REPRESENT THE BEST INFORMATION OBTAINABLE FOR DESIGN. LOCATION INFORMATION HAS BEEN OBTAINED FROM THE VARIOUS UTILITY COMPANIES AND IS EITHER FROM COMPANY RECORD DRAWINGS OR COMPANY PROVIDED FIELD LOCATIONS. THE PLAN LOCATIONS SHOWN ARE NOT GUARANTEED. ADDITIONAL EXISTING UTILITIES MAY ALSO BE ENCOUNTERED.
8. COST OF EXCAVATION, HAULING, AND DUMPING OF EXCESS EXCAVATION TO BE SUBSIDIARY TO PROJECT.
9. ALL OF TRACTS II AND III AS SHOWN ON PLAN SHEETS HAVE BEEN DEDICATED AS DRAINAGE EASEMENTS BY SEPARATE INSTRUMENTS.

**BENCH MARKS**


- B.M. #1: WOODLAWN & 33RD STREET NORTH, CITY OF WICHITA BENCH MARK DISC. 4' NORTH OF SOUTH END OF EAST HUBBARD TO CONCRETE BRIDGE 316' NORTH OF QUARTER SECTION CORNER.  
ELEV. = 174.52
- B.M. #2: RAILROAD SPIKE IN THE WEST SIDE OF THE WEST LEG OF HIGHLINE "H" POLE ON LOT 14, BLOCK 2, WILLOWOOD.  
ELEV. = 184.78



**INDEX TO DRAWINGS**

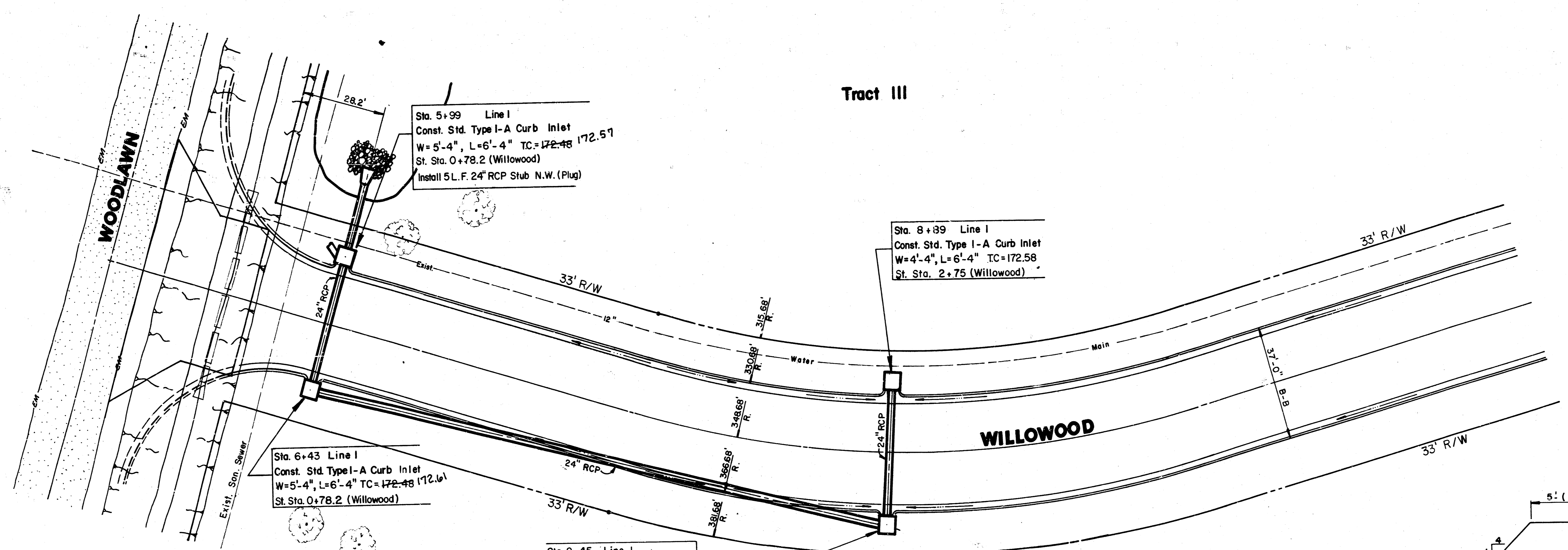
SHEET NO.	DESCRIPTION
1	TITLE SHEET
2	LINE 1 - DITCH
3	LINE 1
4	LINE 2
5-8	LINE 3 & LINE 3a
9	LINE 4
10-12	DITCH PLAN & PROFILE
13	REINFORCED CONC. WINGWALLS
14	CURB INLET DETAIL
15	FINAL PLAT

*AS BUILT PLAN  
10/14/85  
GREENE*

	<b>WILLOWOOD ADDITION</b> SWS. NO. 259	FBN DLM KHB 1984
	PROJECT NO: 468-76-245-81339-000-000-001	MID-KANSAS ENGINEERING CONSULTANTS PA 240 NORTH ROCK ROAD SUITE 130 WICHITA, KANSAS 67206 682-6561

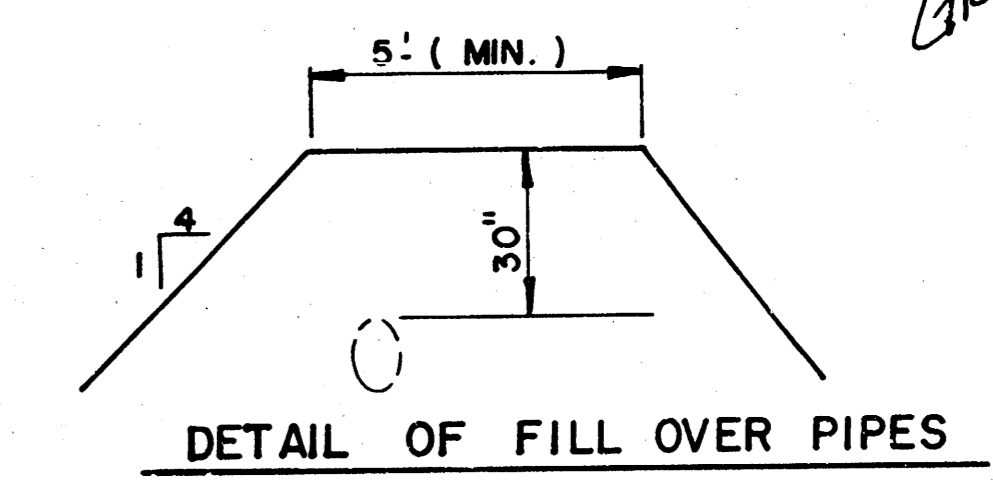
**FILMED FROM THE BEST AVAILABLE COPY**





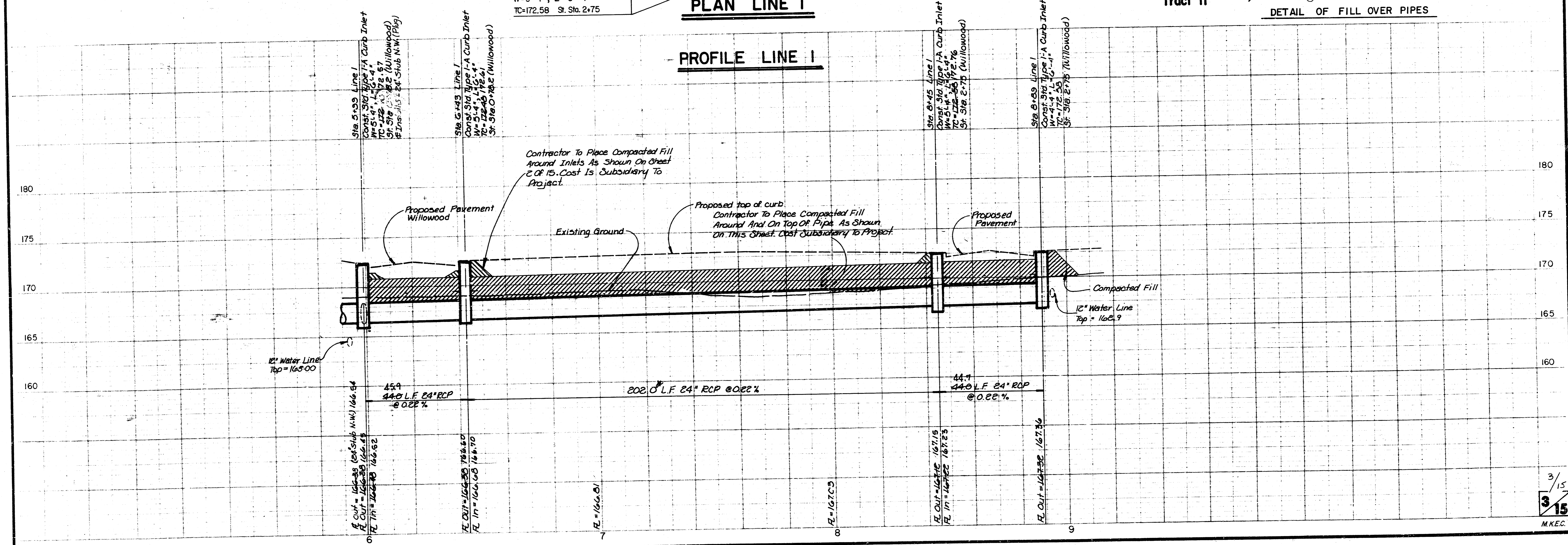
Scale: 1" = 20' Horiz.  
 1" = 5' Vert.

AS BUILT PLAN  
 10/14/85  
 GREENE

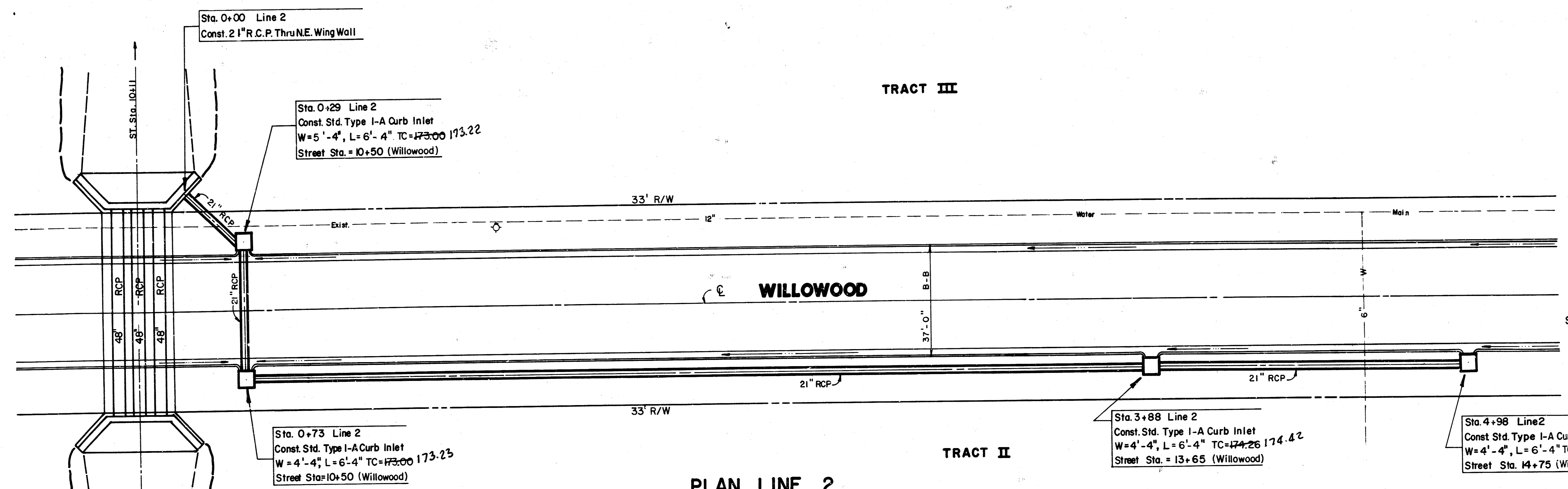


**PLAN LINE I**

**PROFILE LINE I**

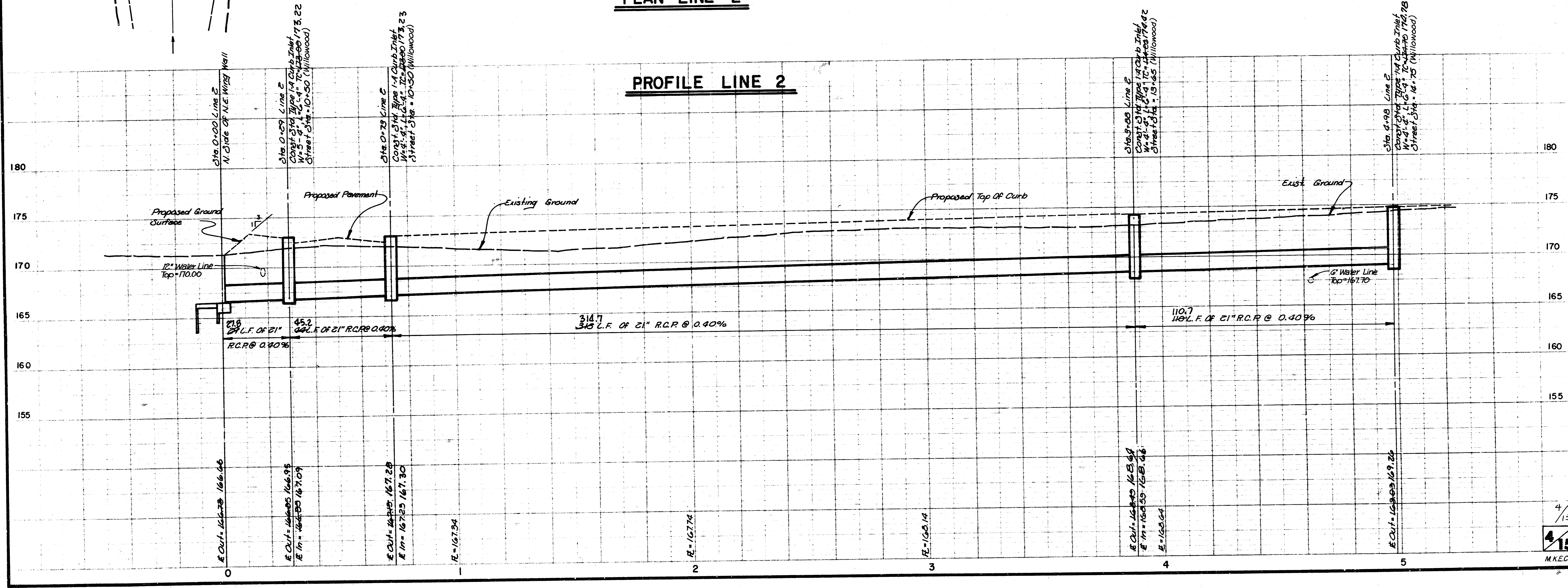


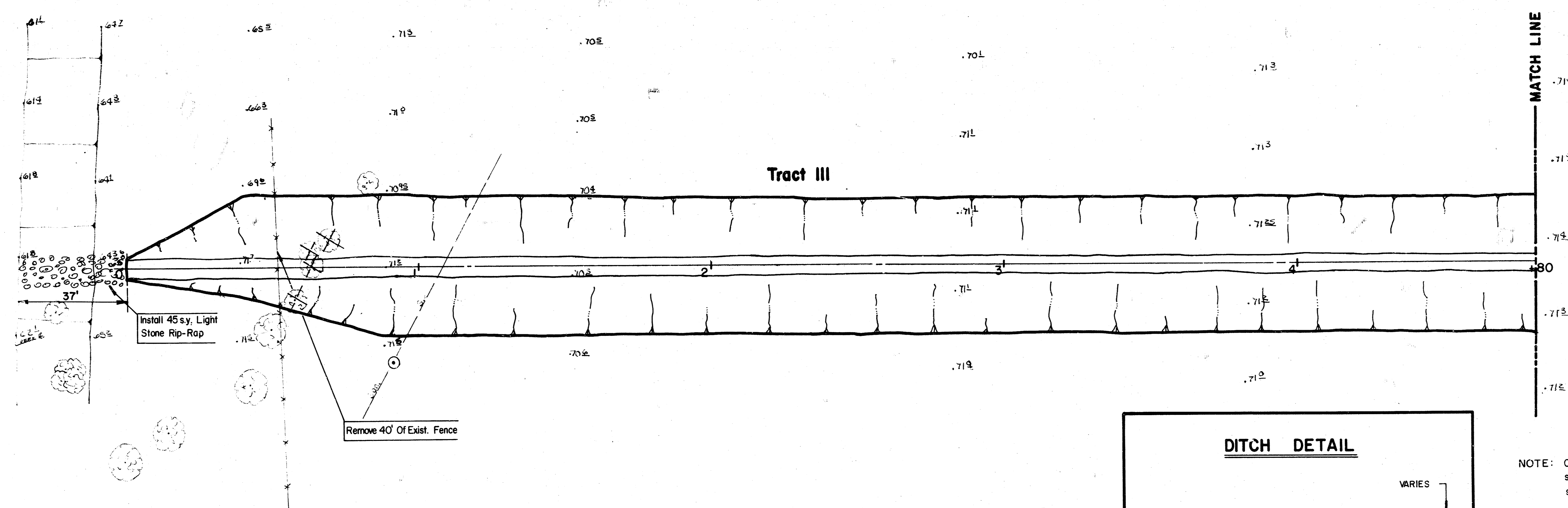
3/15  
 3/15  
 MKEC



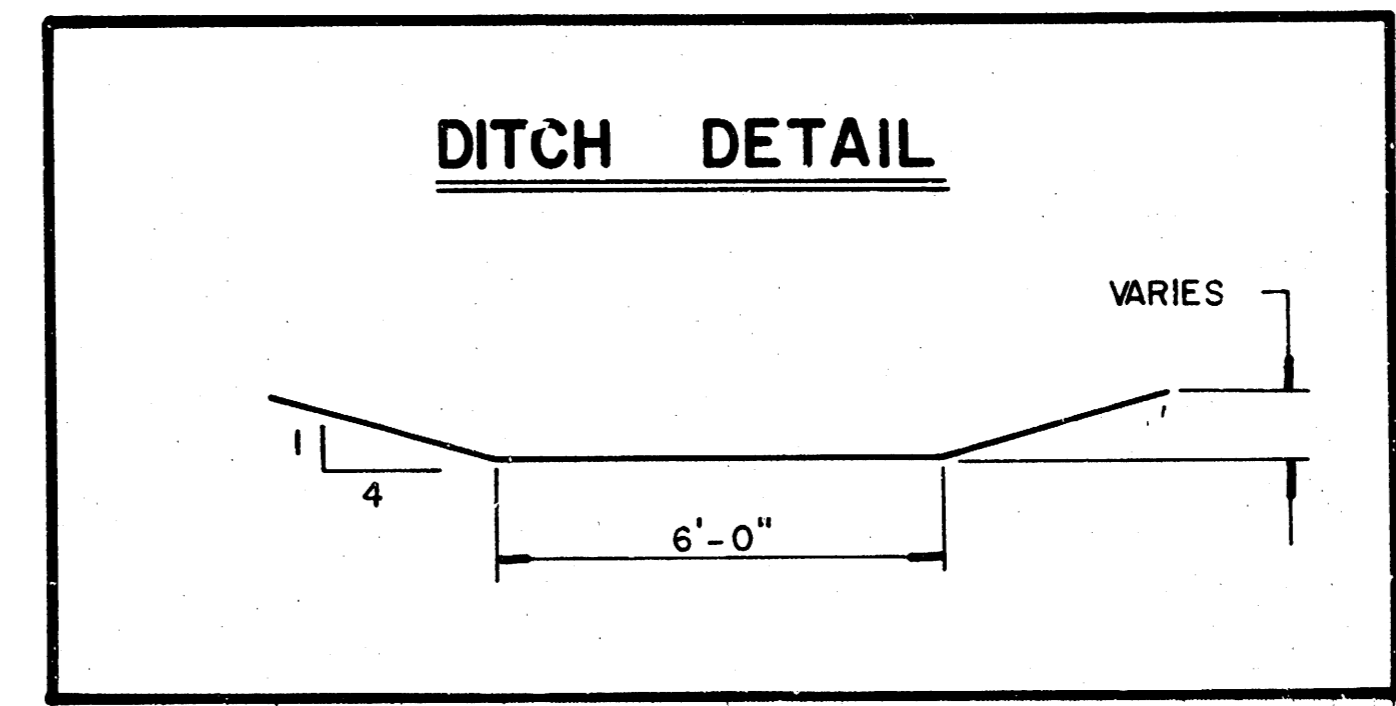
Scale: 1" = 20' Horiz.  
 1" = 5' Vert.

*As BUILT PLAN  
 10/14/85  
 GREENE*





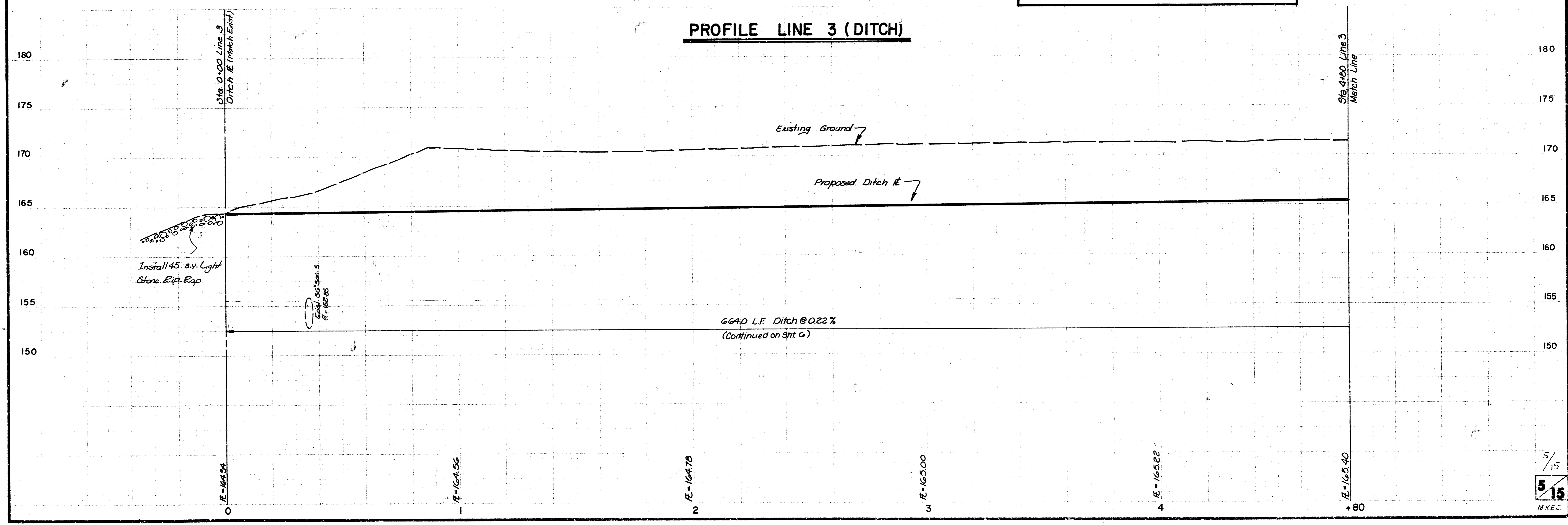
N  
 Scale: 1" = 20' Horiz.  
 1" = 5' Vert.



NOTE: Contractor shall be responsible for seeding and mulching of ditches. Cost subsidiary to project.

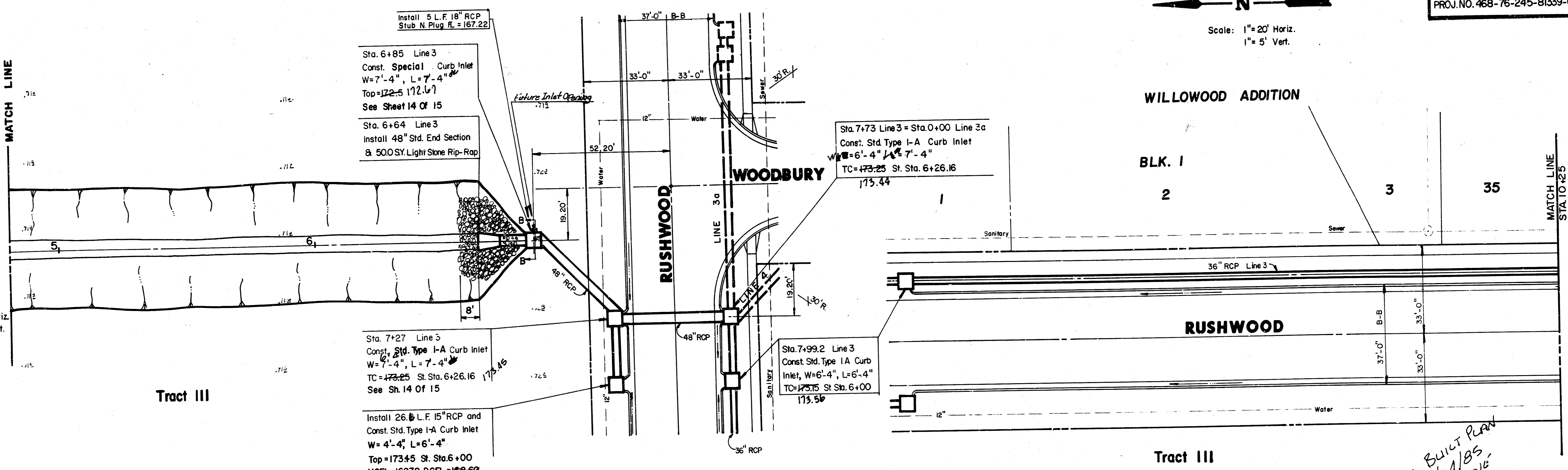
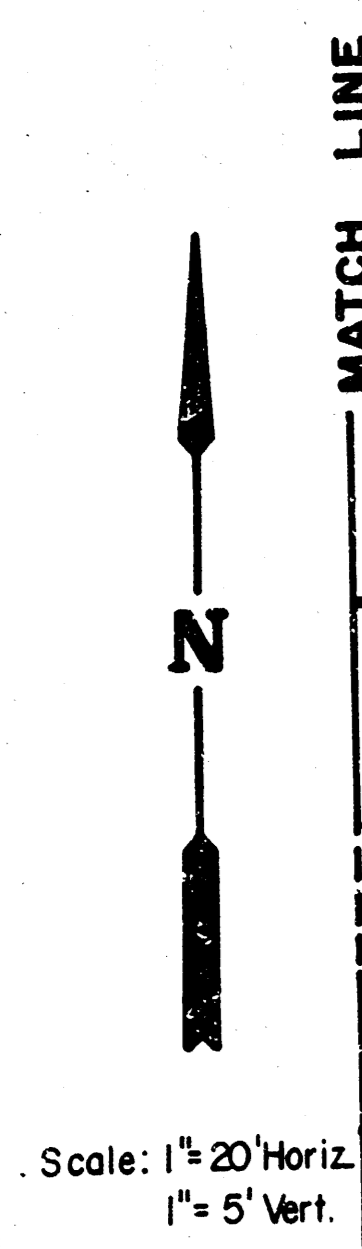
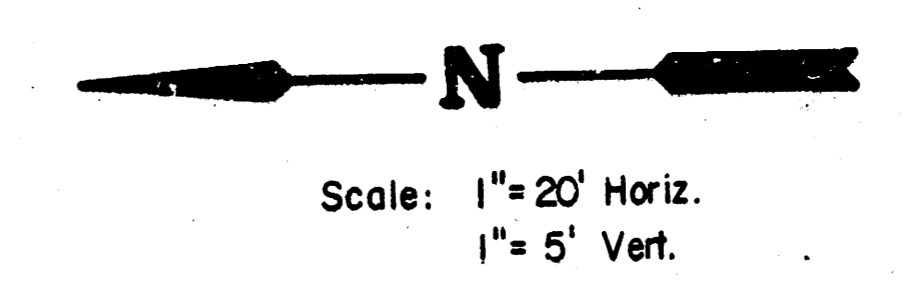
**PLAN LINE 3 (DITCH)**

**PROFILE LINE 3 (DITCH)**

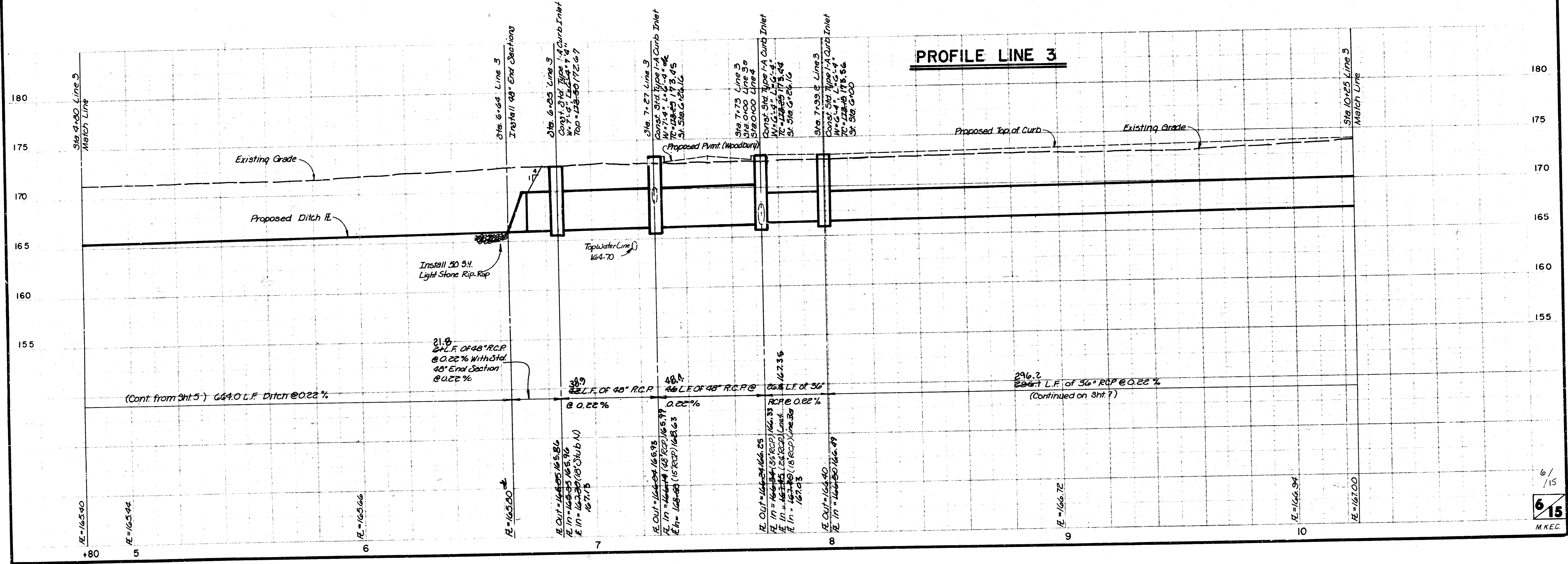


5/15  
**515**  
 M.A.E.C.

FILMED FROM THE BEST AVAILABLE COPY .....

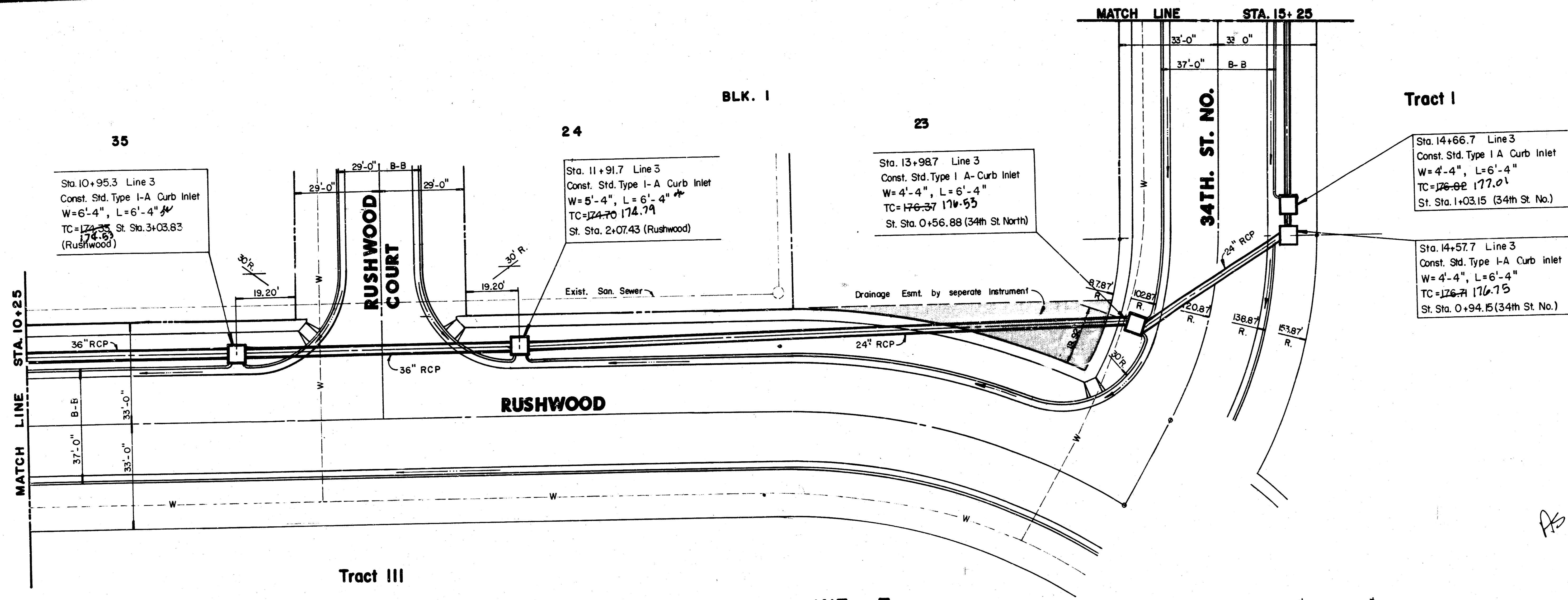


**PLAN LINE 3**



*AS BUILT PLAN  
 10/14/85  
 GREENE*

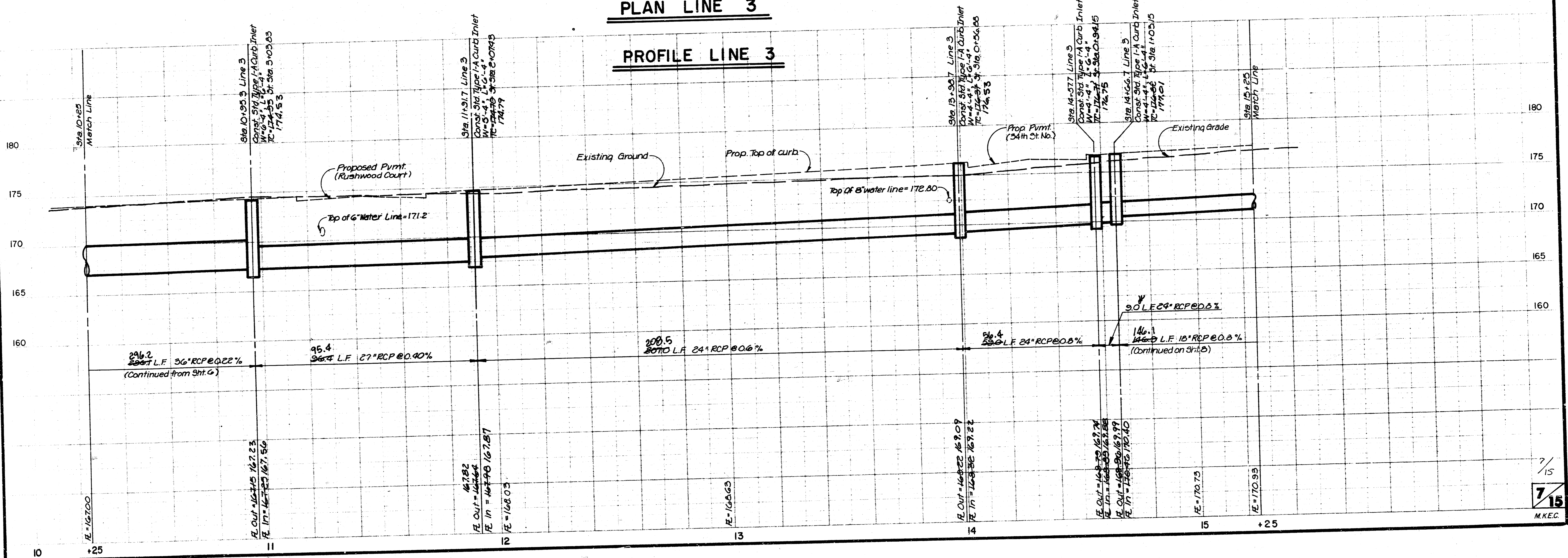
FILMED FROM THE BEST AVAILABLE COPY.....



Scale: 1" = 20' Horiz.  
 1" = 5' Vert.

*AS BUILT PLAN  
 10/14/85  
 GREENE*

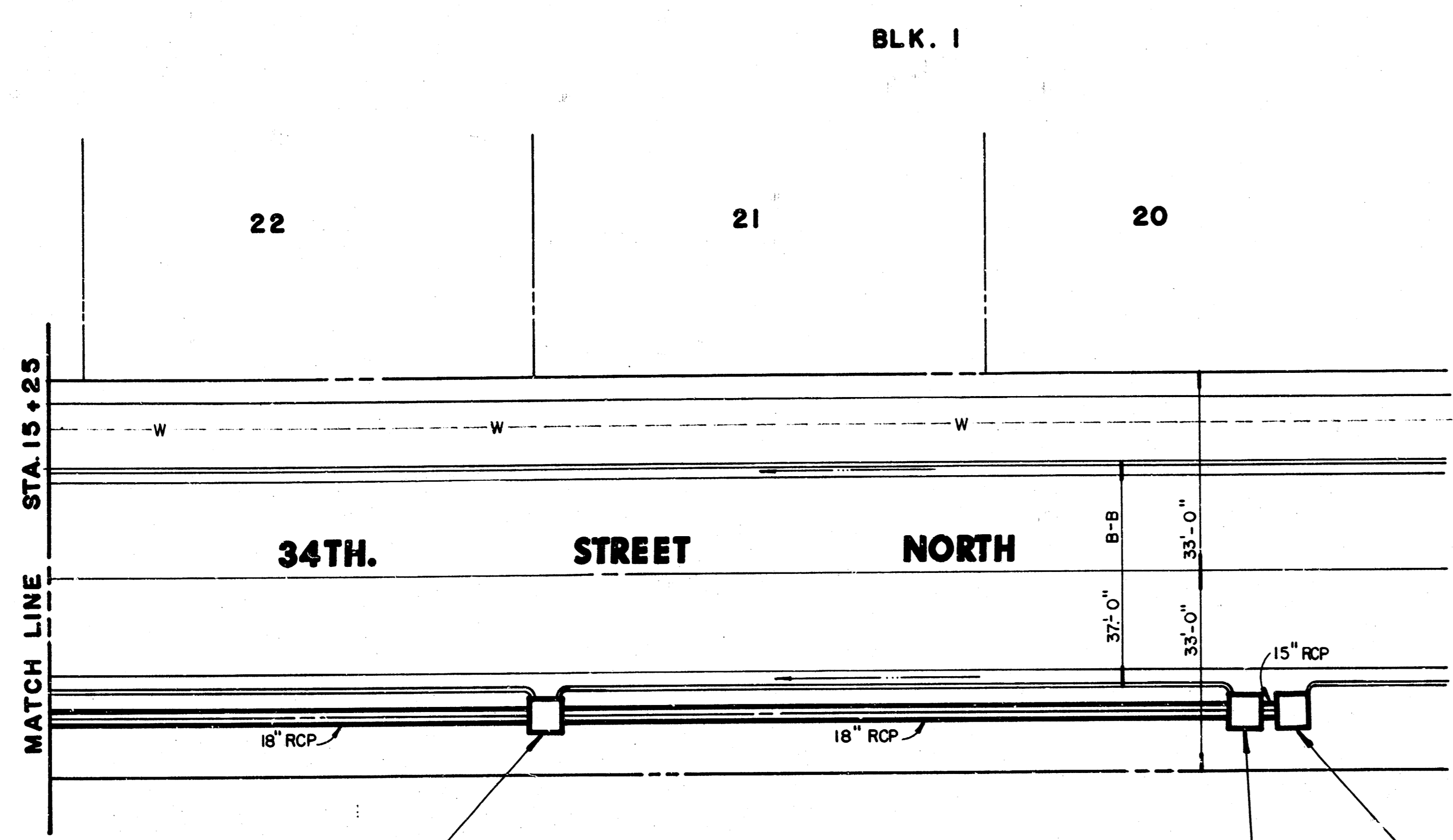
**PLAN LINE 3**  
**PROFILE LINE 3**



7/15  
 M.K.E.C.

Scale: 1" = 20' Horiz.  
 1" = 5' Vert.

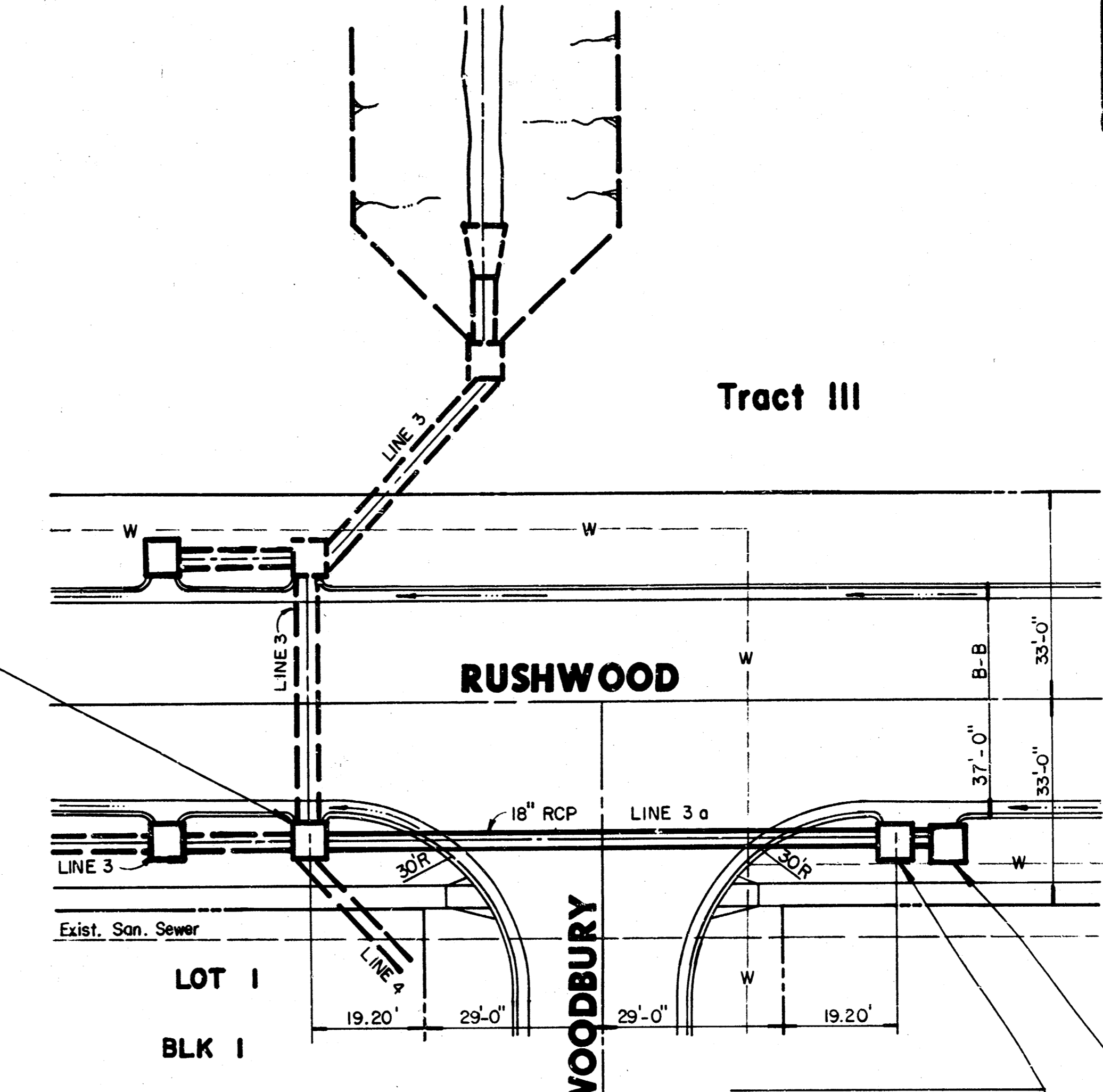
Scale: 1" = 20' Horiz.  
 1" = 5' Vert.



Sta. 16+13.6 Line 3  
 Const. Std. Type I-A Curb Inlet  
 W=4'-4", L=6'-4"  
 TC=173.68 St. Sta. 2+50  
 178.65

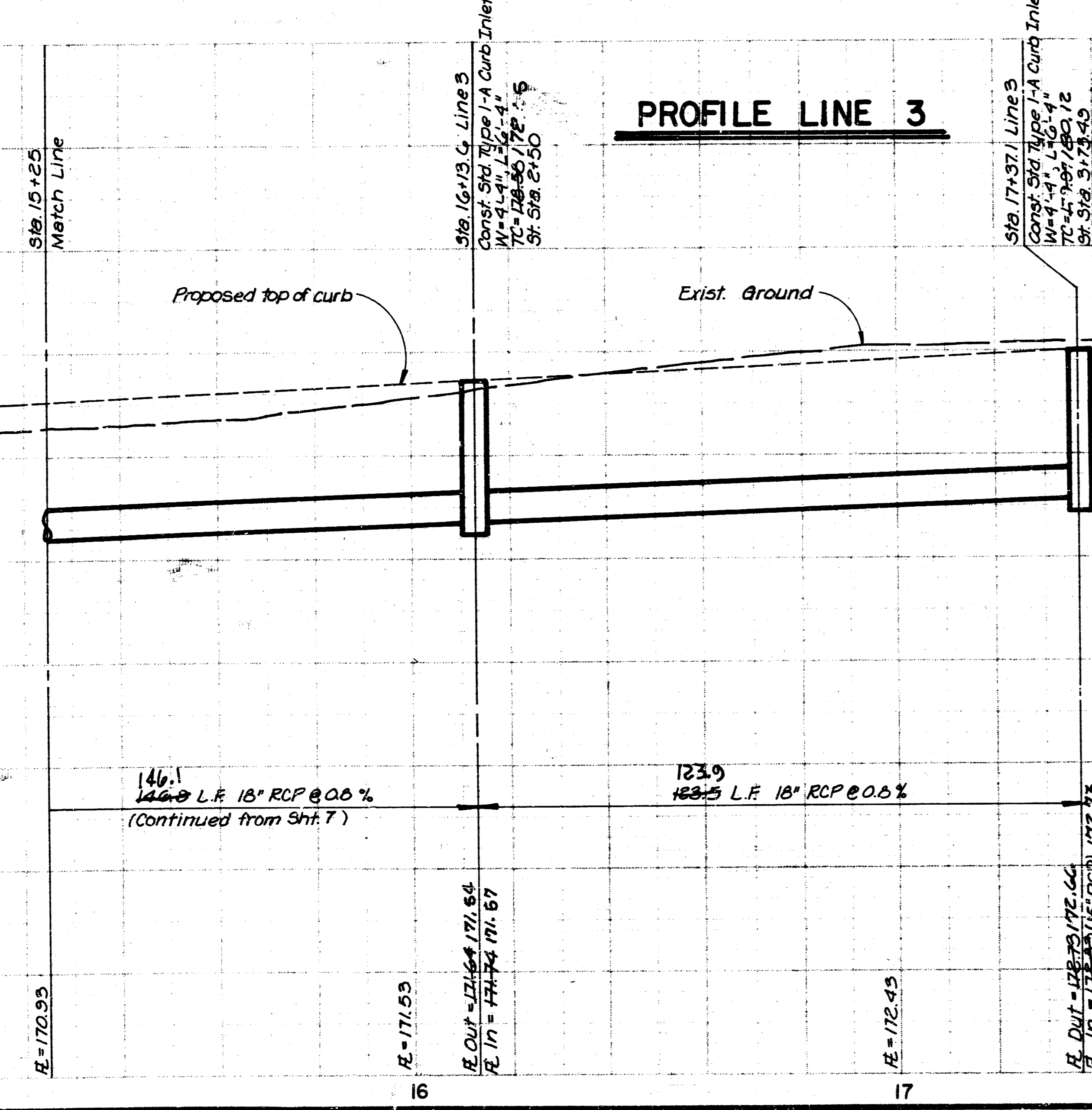
Sta. 17+37.1 Line 3  
 Const. Std. Typ I-A Curb Inlet  
 W=4'-4", L=6'-4"  
 TC=129.97 St. Sta. 3+73.49  
 190.14

Sta. 0+00 Line 3a = Sta. 7+73 Line 3 =  
 Sta. 0+00 Line 4  
 Const. Std. Type I-A Curb Inlet  
 W=6'-4", L=7'-4"  
 TC=173.25/173.44  
 St. Sta. 6+26.16 (Rushwood)



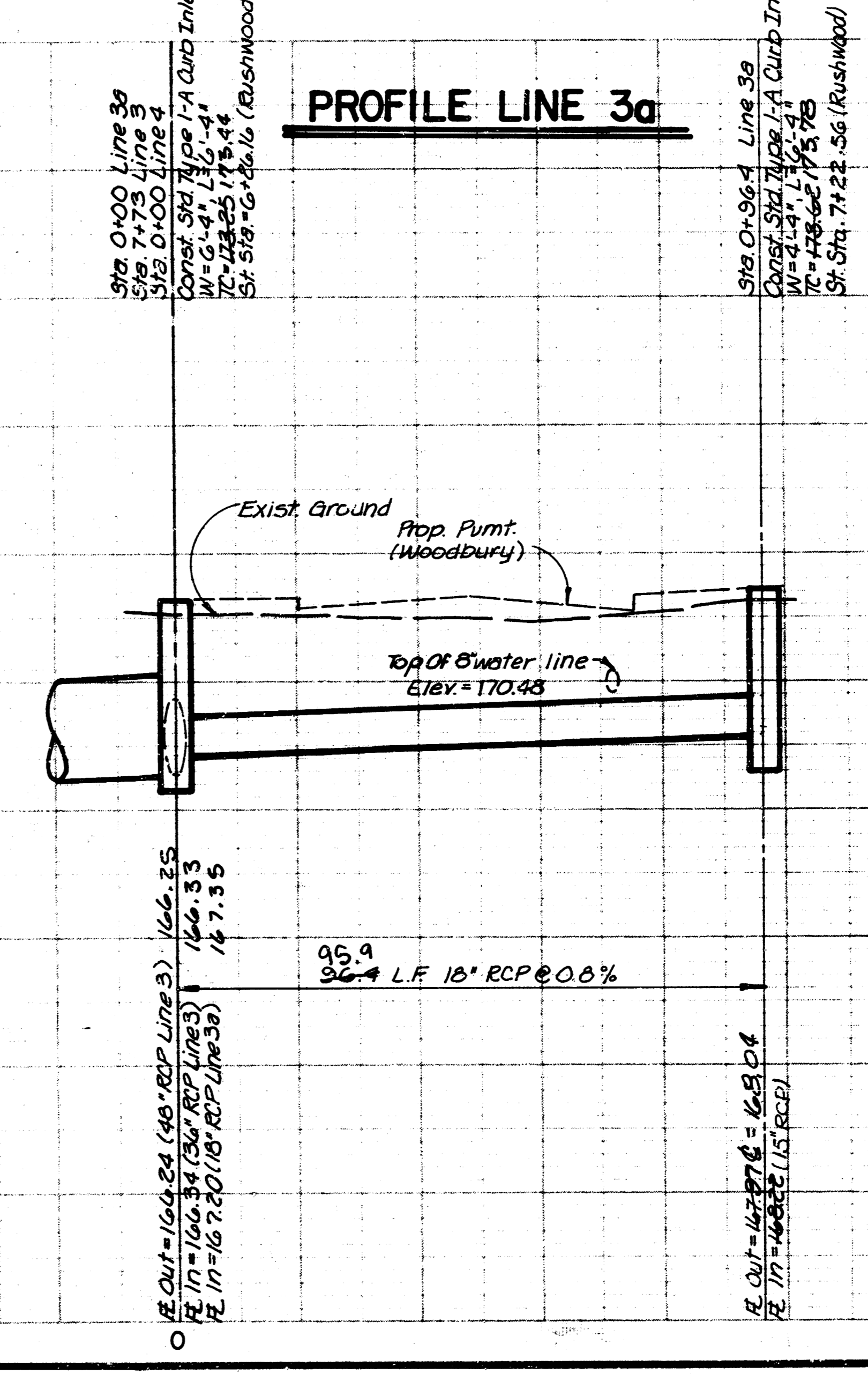
Sta. 0+96.4 Line 3a  
 Const. Std. Type I-A Curb Inlet  
 W=4'-4", L=6'-4"  
 TC=173.62/173.78  
 St. Sta. 7+22.56 (Rushwood)

Sta. 1+05.4 Line 3a  
 Const. Std. Type I-A Curb Inlet  
 W=4'-4", L=6'-4"  
 Install 9.0 LF 15" RCP USFL=168.32  
 TC=173.67/173.90 DSFL=168.00  
 St. Sta. 7+31.56 (Rushwood)



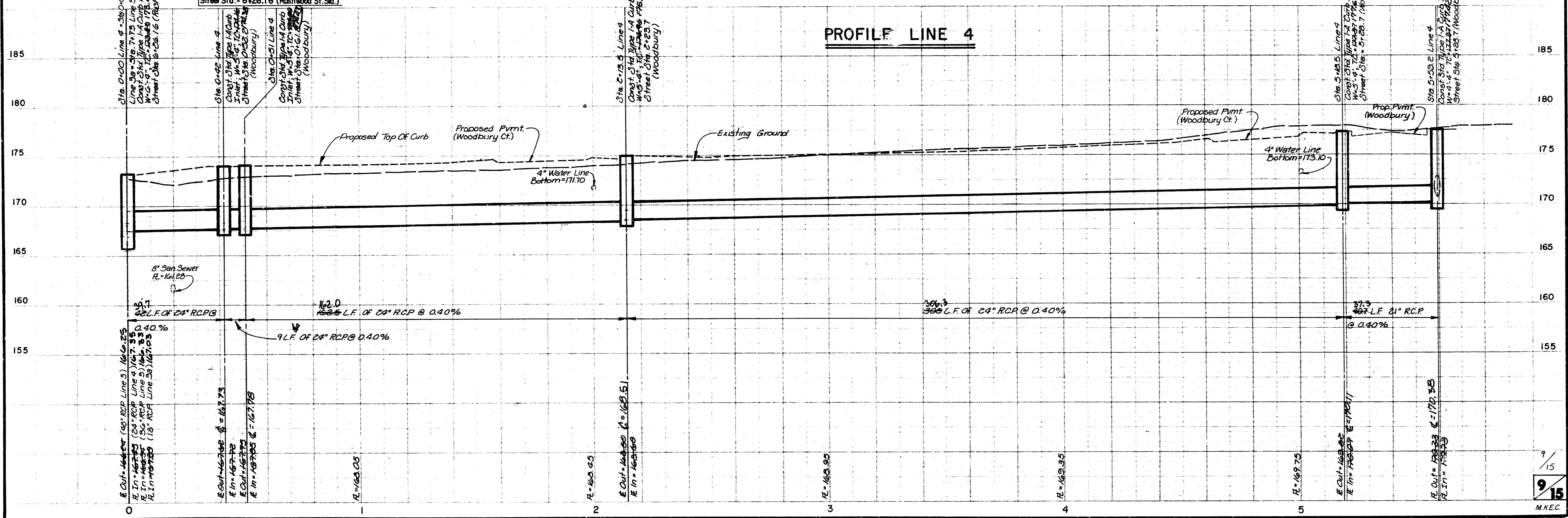
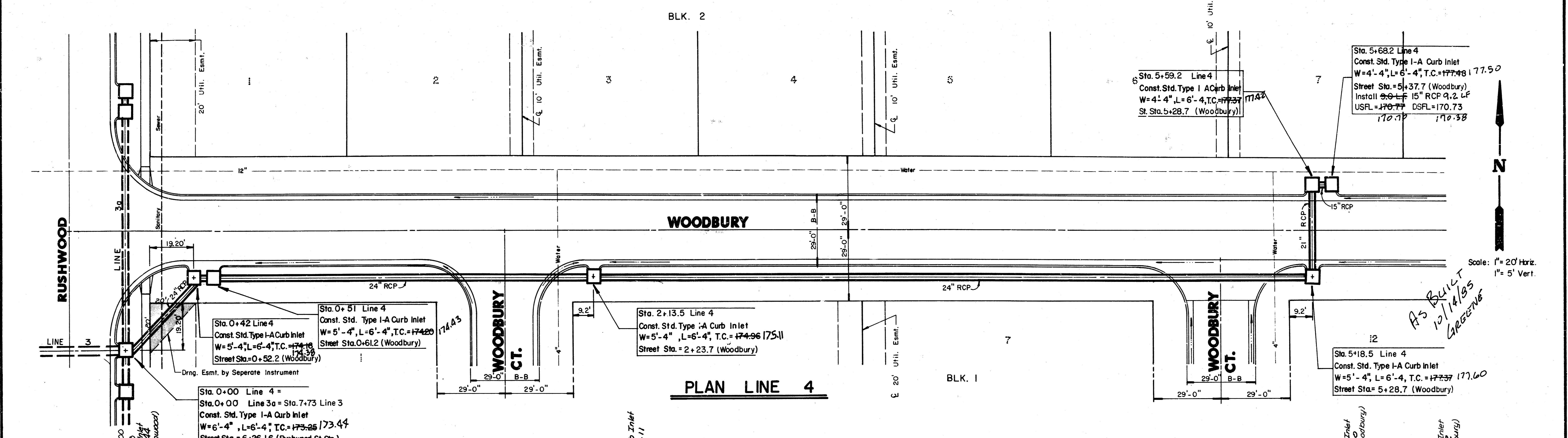
146.1  
 146.9 L.F. 18" RCP @ 0.0%  
 (Continued from Sht. 7)

123.9  
 123.5 L.F. 18" RCP @ 0.0%



95.9  
 96.4 L.F. 18" RCP @ 0.0%

*As BUILT Plan  
 10/14/85  
 MGENE*



Sta. 5+68.2 Line 4  
 Const. Std. Type I-A Curb Inlet  
 W=4'-4", L=6'-4", T.C.=177.48 | 177.50  
 Street Sta.=5+37.7 (Woodbury)  
 Install 15" RCP 9.2 LF  
 USFL=170.77 DSFL=170.73  
 St. Sta.=28.7 (Woodbury)  
 170.70 170.38

Sta. 0+42 Line 4  
 Const. Std. Type I-A Curb Inlet  
 W=5'-4", L=6'-4", T.C.=174.40  
 Street Sta.=0+52.2 (Woodbury)

Sta. 2+13.5 Line 4  
 Const. Std. Type I-A Curb Inlet  
 W=5'-4", L=6'-4", T.C.=174.96 | 175.11  
 Street Sta.=2+23.7 (Woodbury)

Sta. 5+18.5 Line 4  
 Const. Std. Type I-A Curb Inlet  
 W=5'-4", L=6'-4", T.C.=177.37 | 177.60  
 Street Sta.=5+28.7 (Woodbury)

Sta. 0+00 Line 4 =  
 Sta. 0+00 Line 3a = Sta. 7.73 Line 3  
 Const. Std. Type I-A Curb Inlet  
 W=6'-4", L=6'-4", T.C.=173.25 | 173.44  
 Street Sta.=6+26.16 (Rushwood St. Sta.)

Sta. 0+00 Line 3  
 Line 3a = Sta. 7.73 Line 3  
 Const. Std. Type I-A Curb Inlet  
 W=6'-4", L=6'-4", T.C.=173.25 | 173.44  
 Street Sta.=6+26.16 (Rushwood St. Sta.)

Sta. 0+42 Line 4  
 Const. Std. Type I-A Curb Inlet  
 W=5'-4", L=6'-4", T.C.=174.40  
 Street Sta.=0+52.2 (Woodbury)

Sta. 2+13.5 Line 4  
 Const. Std. Type I-A Curb Inlet  
 W=5'-4", L=6'-4", T.C.=174.96 | 175.11  
 Street Sta.=2+23.7 (Woodbury)

Sta. 5+18.5 Line 4  
 Const. Std. Type I-A Curb Inlet  
 W=5'-4", L=6'-4", T.C.=177.37 | 177.60  
 Street Sta.=5+28.7 (Woodbury)

Sta. 5+68.2 Line 4  
 Const. Std. Type I-A Curb Inlet  
 W=4'-4", L=6'-4", T.C.=177.48 | 177.50  
 Street Sta.=5+37.7 (Woodbury)  
 Street Sta.=5+28.7 (Woodbury)

8" San Sewer  
 R.=161.25

106.7  
 366 L.F. OF 24" RCP @ 0.40%

112.0  
 169 L.F. OF 24" RCP @ 0.40%

9 L.F. OF 24" RCP @ 0.40%

106.3  
 366 L.F. OF 24" RCP @ 0.40%

107.3  
 467 L.F. OF 24" RCP @ 0.40%

E. Out=164.44  
 R. In=167.73  
 R. In=167.73  
 R. In=167.73  
 R. In=167.73

E. Out=167.73  
 R. In=167.73  
 R. In=167.73  
 R. In=167.73

E. Out=168.51  
 R. In=168.51  
 R. In=168.51  
 R. In=168.51

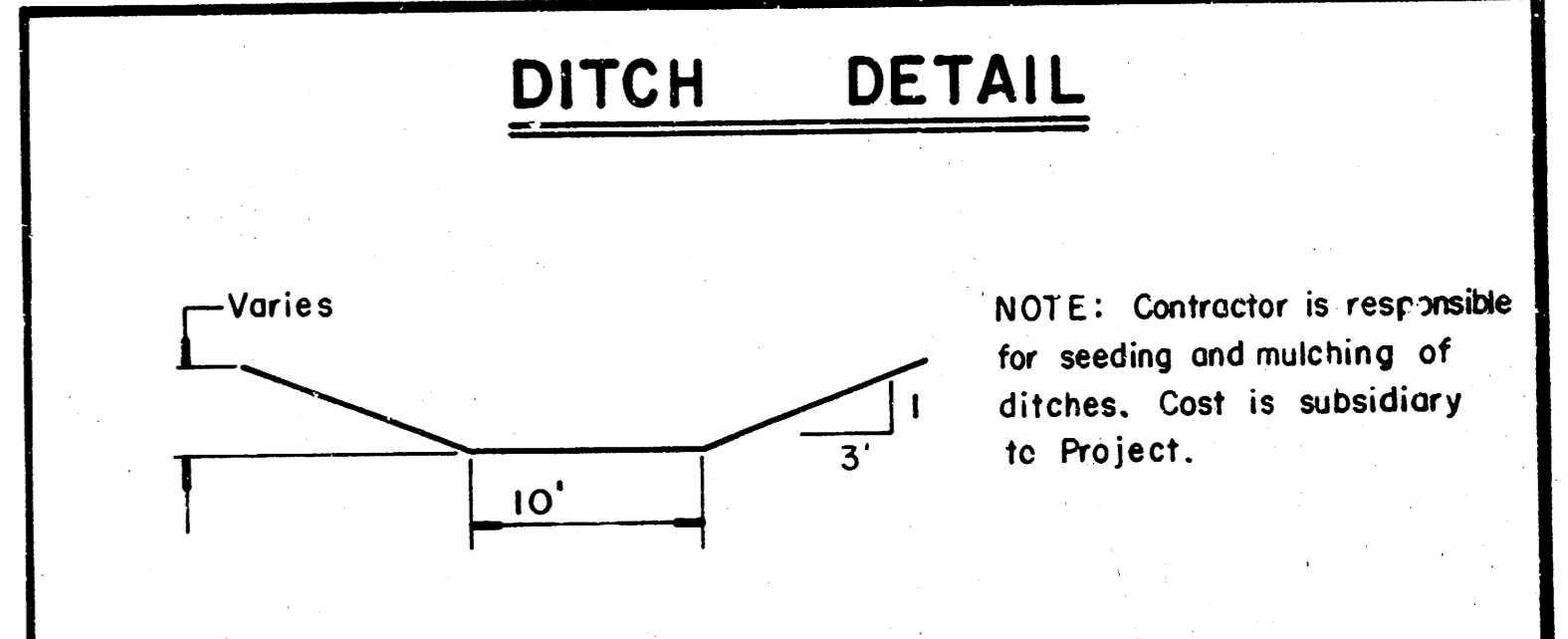
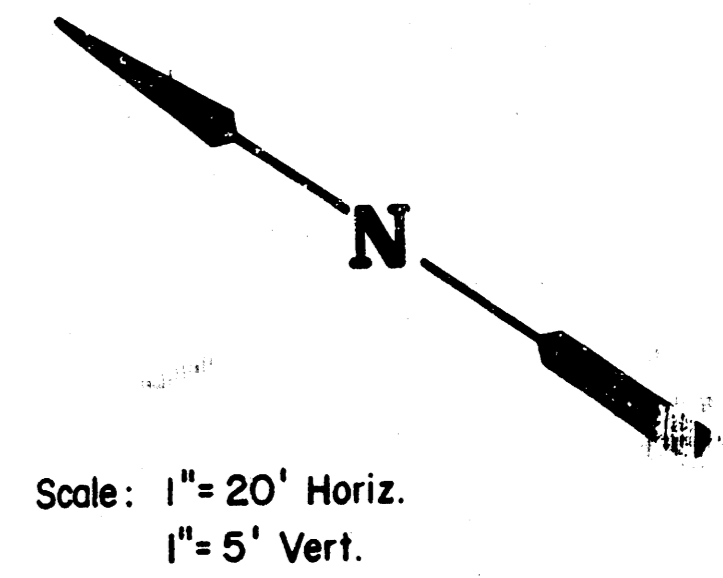
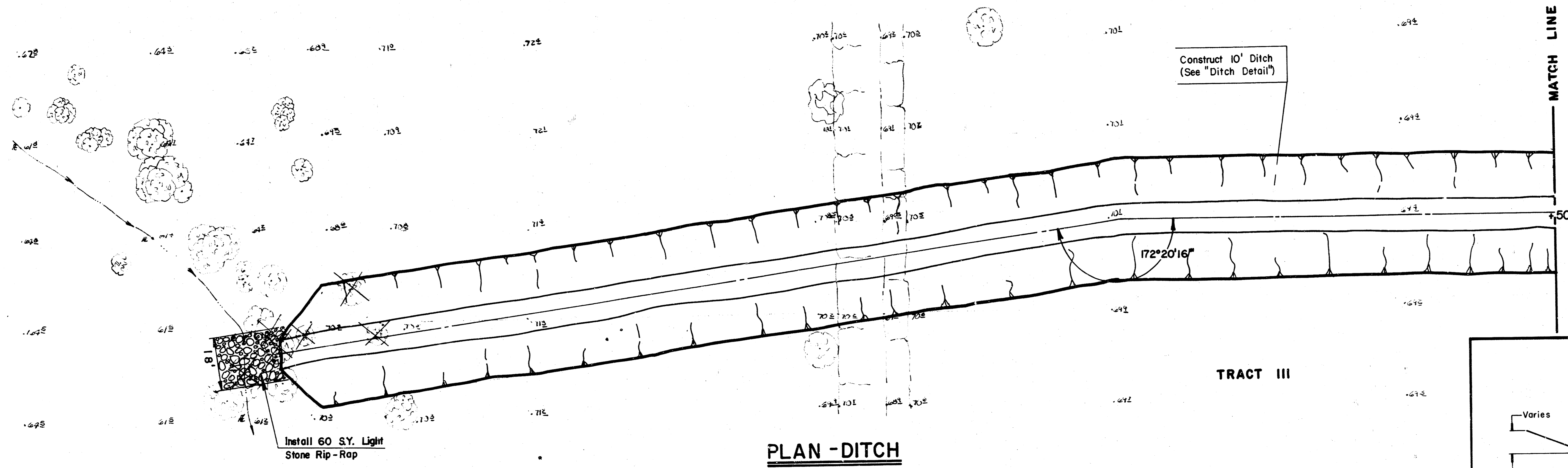
E. Out=177.60  
 R. In=177.60  
 R. In=177.60  
 R. In=177.60

E. Out=177.50  
 R. In=177.50  
 R. In=177.50  
 R. In=177.50

FILED FROM THE BEST AVAILABLE COPY.....

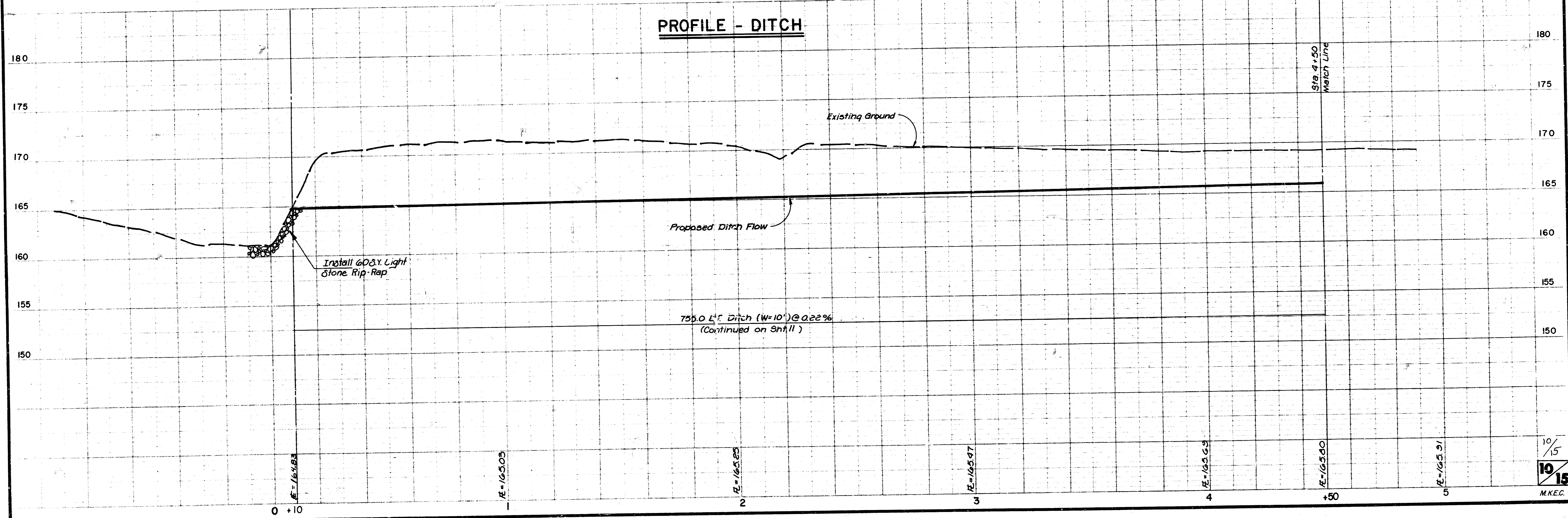
WILLOWOOD ADDITION  
 SWS NO. 259  
 PROJ. NO. 468-76-245-8339-000-000-001

TRACT III



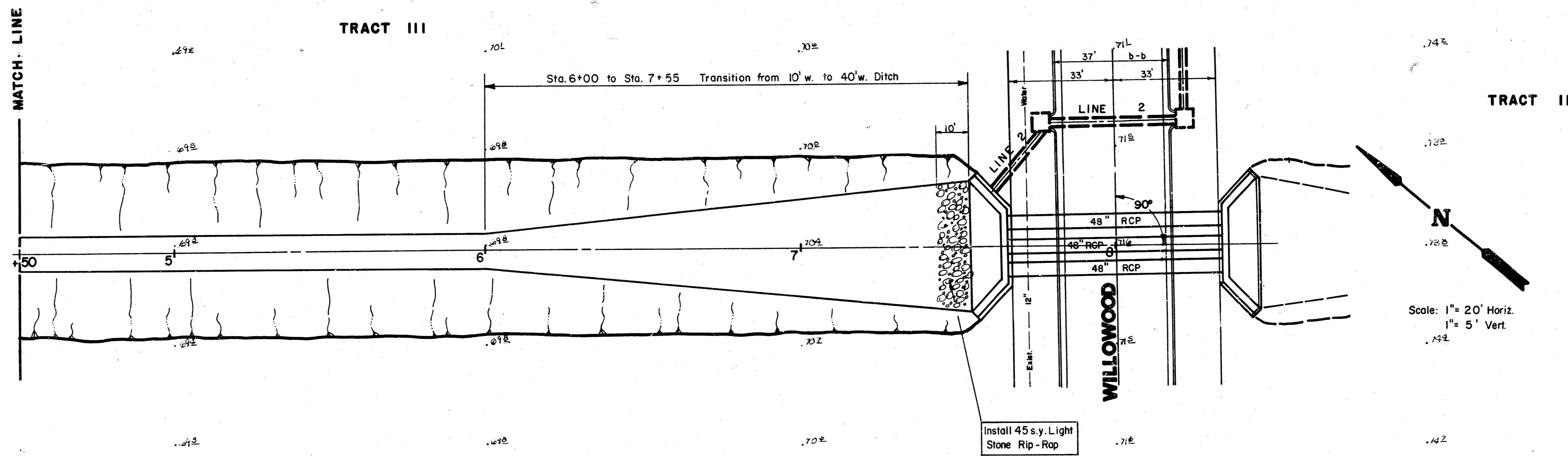
**PLAN - DITCH**

**PROFILE - DITCH**



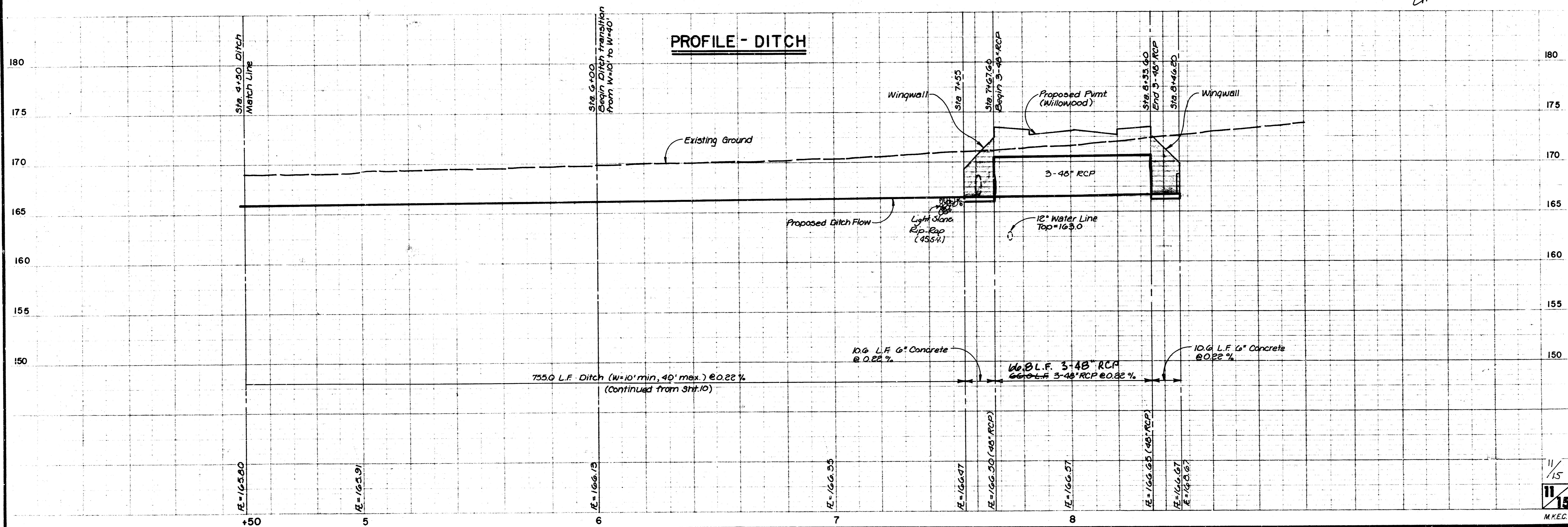
10/15  
 10/15  
 M.K.E.C.

FILMED FROM THE BEST AVAILABLE COPY.....



PLAN - DITCH

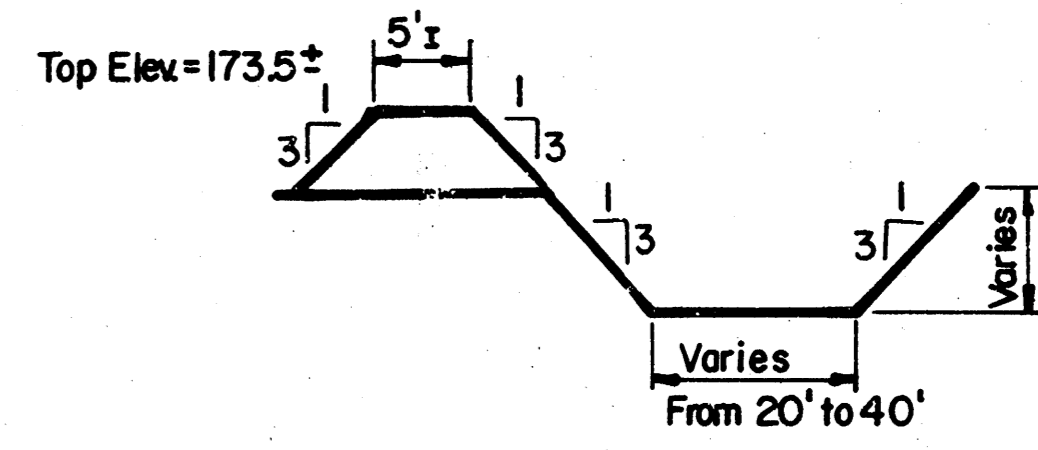
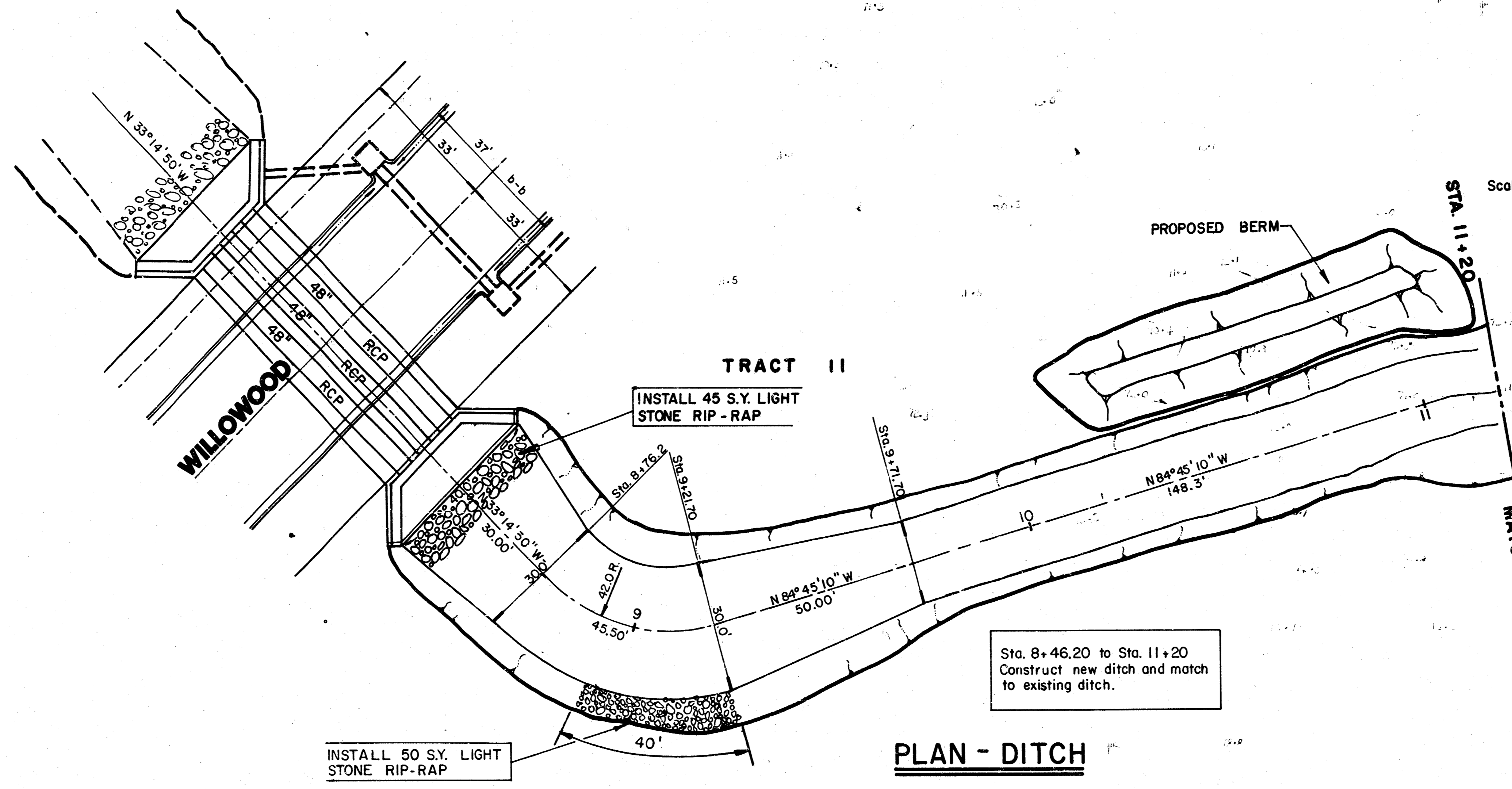
*AS BUILT  
 10/14/85  
 GREENE*



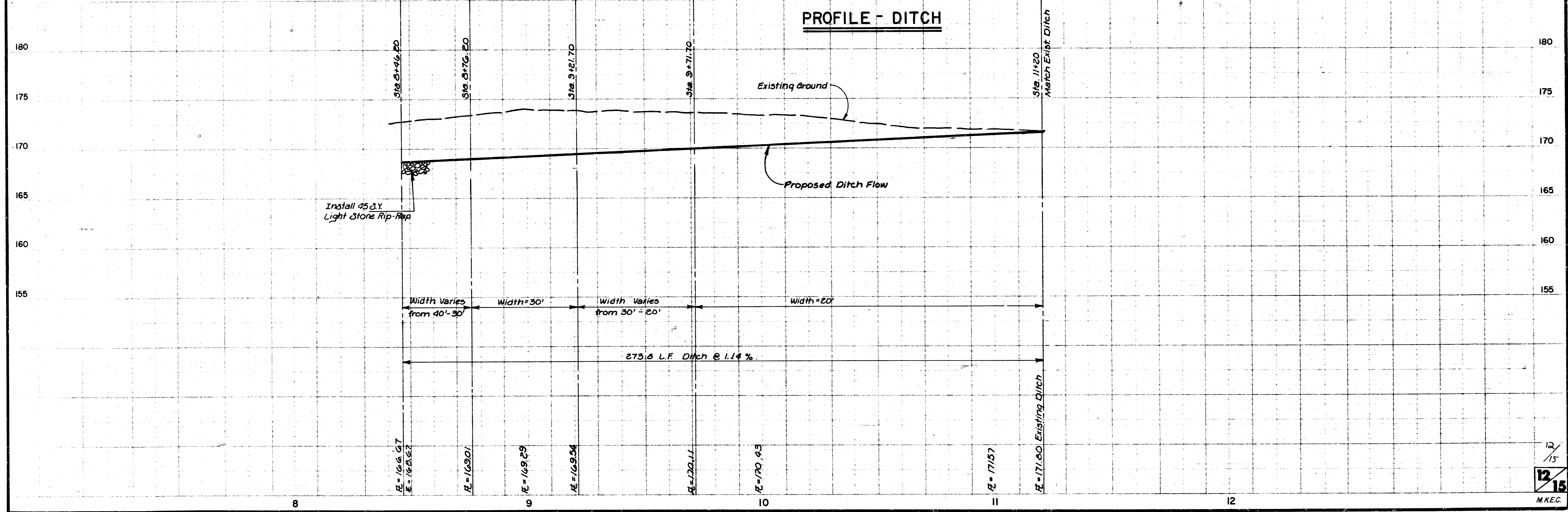
PROFILE - DITCH

11/15  
 M.K.E.C.

FILMED FROM THE BEST AVAILABLE COPY .....



NOTE: CONTRACTOR SHALL BE RESPONSIBLE FOR SEEDING & MULCHING OF BERM & DITCH. COST SUBSIDIARY TO PROJECT.



12/15  
 MKEC

FILMED FROM THE BEST AVAILABLE COPY.....





