

STORM SEWER PLANS FOR S.W.S. NO. 289 SYCAMORE VILLAGE 4TH. PROJECT NO. 468-76-245-81466-000-000-001 CITY OF WICHITA, KANSAS MICHAEL E. LINDEBAK, CITY ENGINEER SEPT. , 1985

GENERAL NOTES

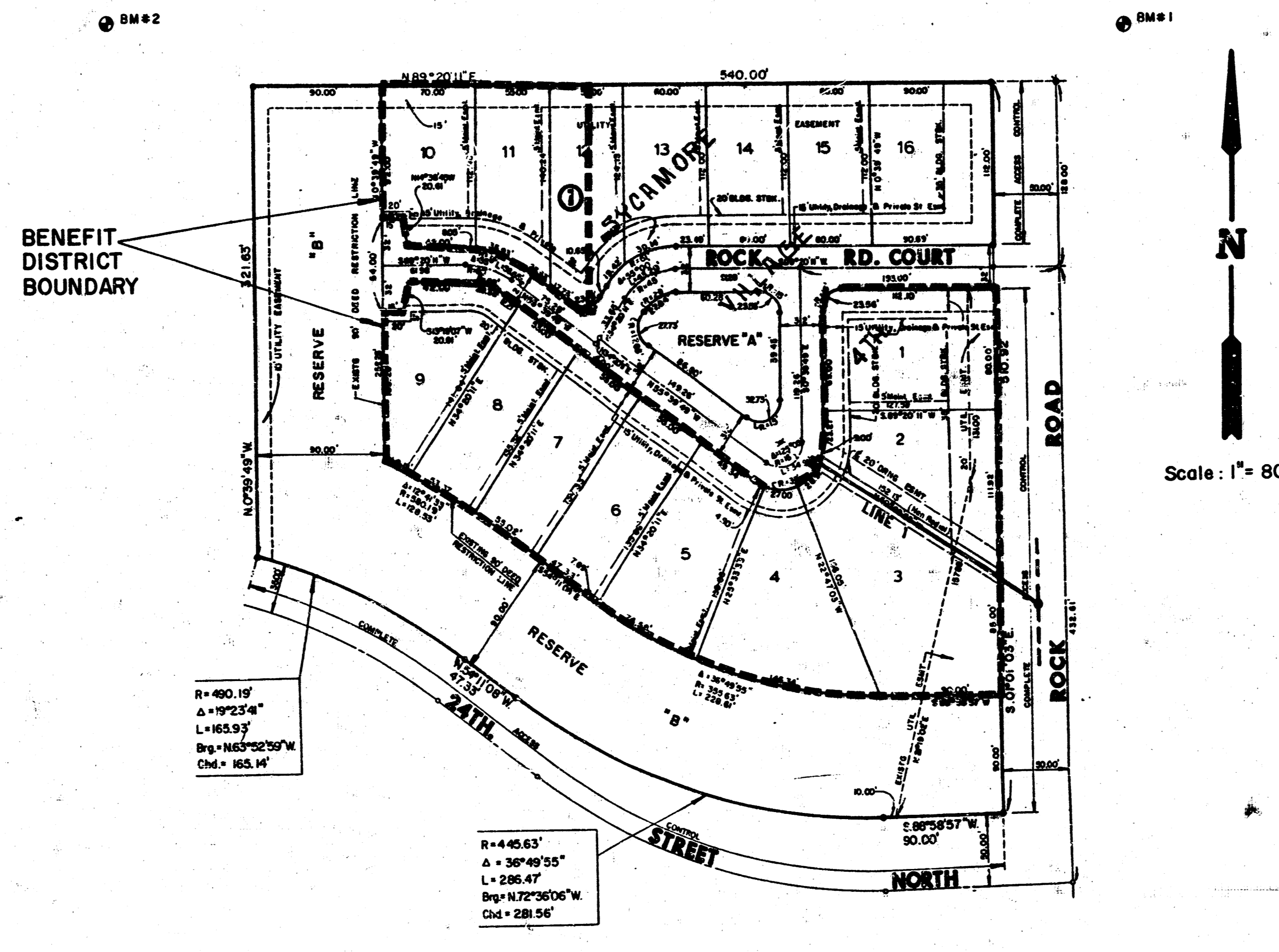
1. THE TOPS OF INLET AND MANHOLE AS NOTED ON THE PLANS MAY VARY SO AS TO MEET PROPOSED TOP OF CURB ELEVATIONS OR PAVEMENT ELEVATIONS. THE FIELD ENGINEER SHALL LOCATE INLETS AND MANHOLES WITH REFERENCE TO PROPOSED PAVING PLANS OF THE PERTINENT STREETS.
2. ALL CONCRETE SHALL BE STANDARD PAVING MIX UNLESS OTHERWISE NOTED.
3. THE CONTRACTOR SHALL BE RESPONSIBLE FOR PRESERVING PROPERTY IRONS. THE CONTRACTOR SHALL BE REQUIRED TO RE-ESTABLISH ANY PROPERTY IRONS WHICH ARE DAMAGED OR DESTROYED BY HIS CONSTRUCTION OPERATIONS. SUCH IRONS SHALL BE RE-ESTABLISHED BY A LICENSED LAND SURVEYOR OR A LICENSED PROFESSIONAL ENGINEER IN ACCORDANCE WITH STATE LAWS.
4. CONTRACTOR SHALL NOTIFY THE UTILITY COMPANIES OF CONSTRUCTION SCHEDULING.
5. EXISTING UTILITIES AND THEIR LOCATIONS, AS SHOWN ON THE PLANS, REPRESENT THE BEST INFORMATION OBTAINABLE FOR DESIGN. LOCATION INFORMATION HAS BEEN OBTAINED FROM THE VARIOUS UTILITY COMPANIES AND IS EITHER FROM COMPANY RECORD DRAWINGS OR COMPANY PROVIDED FIELD LOCATIONS. THE PLAN LOCATIONS SHOWN ARE NOT GUARANTEED. ADDITIONAL EXISTING UTILITIES MAY ALSO BE ENCOUNTERED.

NOTE: NOTIFY THE FOLLOWING COMPANIES PRIOR TO ANY EXCAVATION:

| | |
|------------------------|----------------|
| ARKLA GAS COMPANY | 942-8350 |
| BELL TELEPHONE COMPANY | 1-571-2115 |
| CABLEVISION | 269-3340 |
| K.P.L. Gas Service | 263-7511 |
| KANSAS GAS & ELECTRIC | 261-6375 |
| KANSAS ONE-CALL | 1-800-344-7233 |

BENCH MARKS

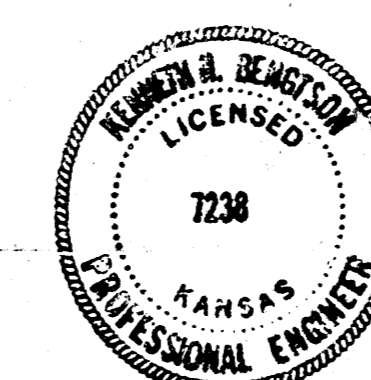
- BM #1 "O" CUT ON THE W. SIDE OF "Y" POLE BASE ON THE E. SIDE OF ROCK RD. AT THE E. 1/4 COR. OF SEC. 6-27-2E
ELEV= 218.48
- BM #2 SPK STEP N. SIDE OF "Y" POLE 1ST ONE W. OF E. 1/4 COR. OF SEC. 6-27-2E
ELEV= 224.71



INDEX TO DRAWINGS

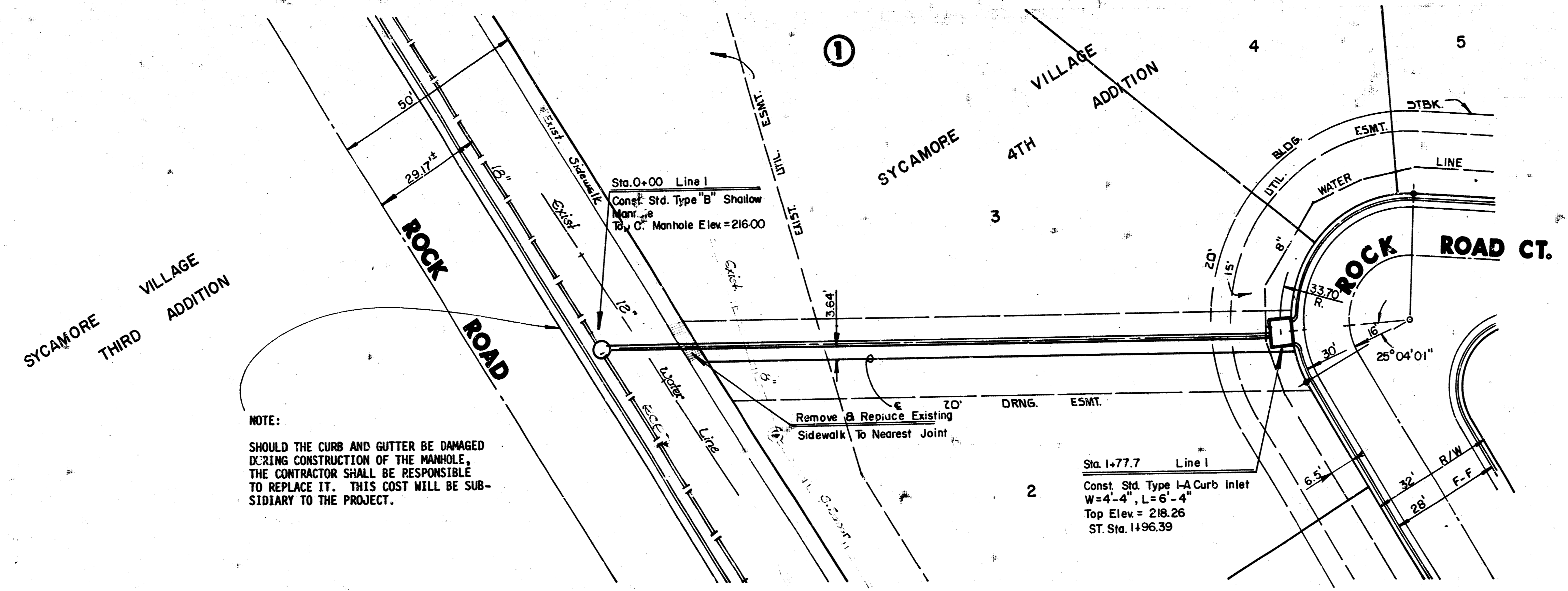
| SHEET NO. | DISCUSSION |
|-----------|-----------------|
| 1 | TITLE SHEET |
| 2 | LINE 1 |
| 3 | MANHOLE DETAILS |
| 4 | INLET DETAILS |
| 5 | FINAL PLAN |

*AS BUILT PLAN
12-11-85
GREENE*



| | | |
|---|---|-----------------------|
| MEC | SYCAMORE VILLAGE 4TH. | Design RMS |
| | SWS. NO. 289 | Drawn by KH B |
| | PROJECT NO: 468-76-245-81466-000-000-001 | Date JUNE, 1985 |
| | | Job no |
| MID-KANSAS ENGINEERING CONSULTANTS PA 3500 NORTH ROCK ROAD BUILDING #800 WICHITA, KANSAS 67226 | | Sheet 1 of 5 |

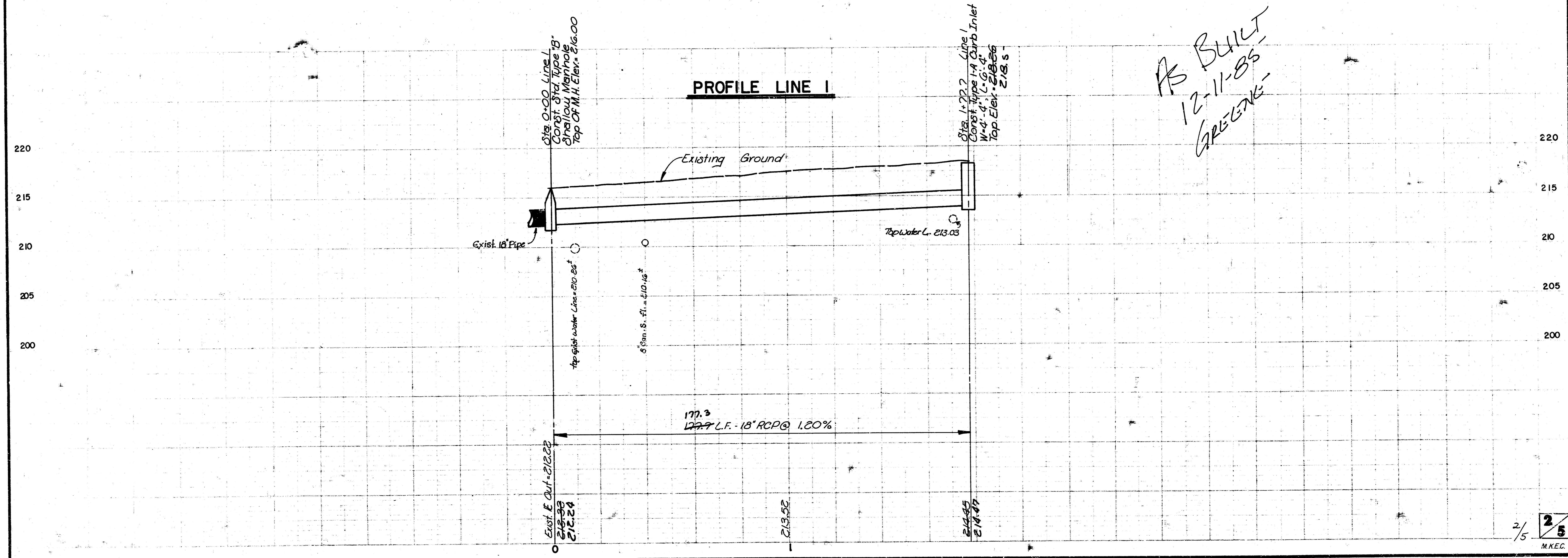
FILMED FROM THE BEST AVAILABLE COPY.....



Scale: 1" = 20' Horiz.
 1" = 5' Vert.

NOTE:
 SHOULD THE CURB AND GUTTER BE DAMAGED DURING CONSTRUCTION OF THE MANHOLE, THE CONTRACTOR SHALL BE RESPONSIBLE TO REPLACE IT. THIS COST WILL BE SUBSIDIARY TO THE PROJECT.

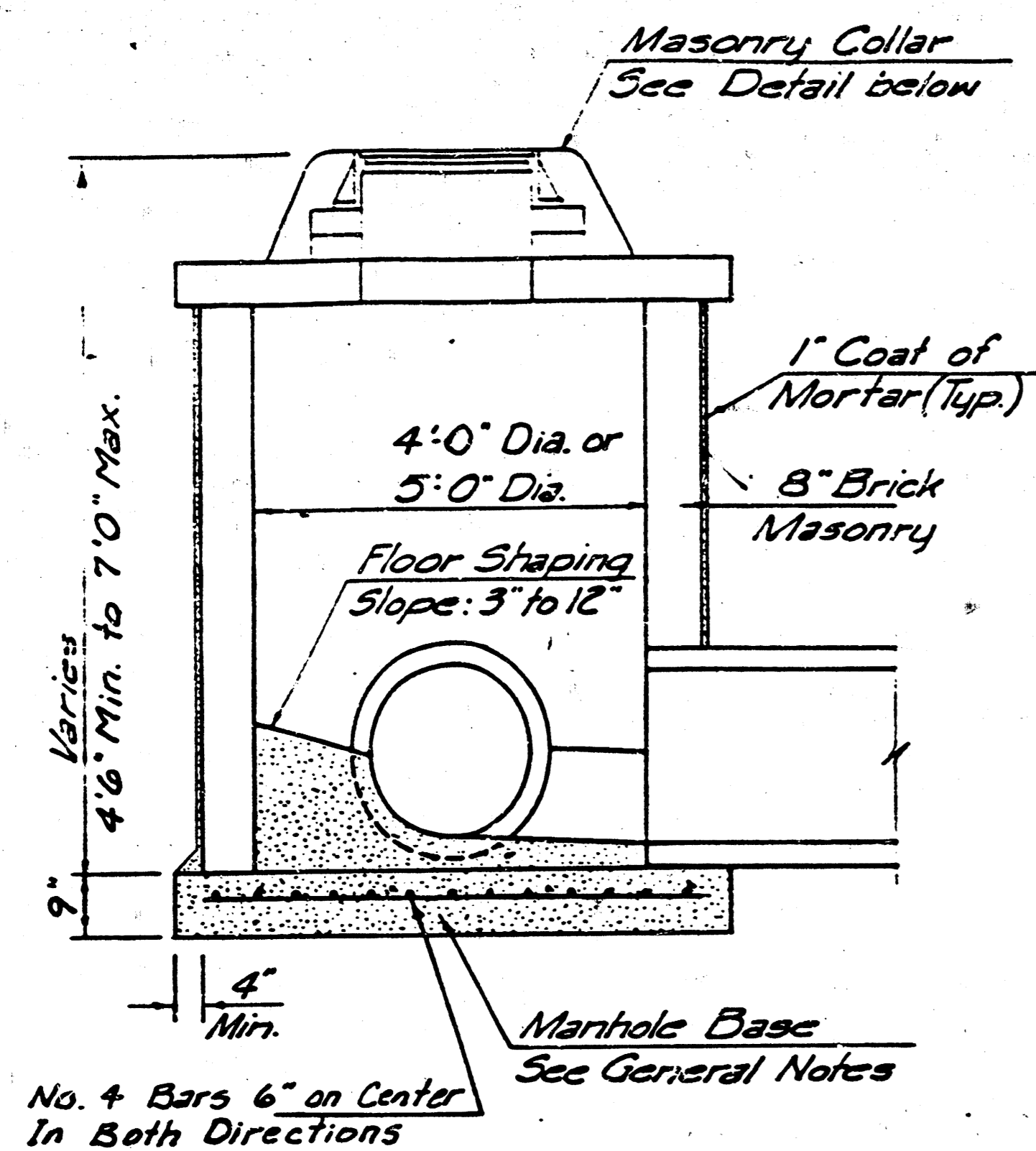
PLAN LINE 1



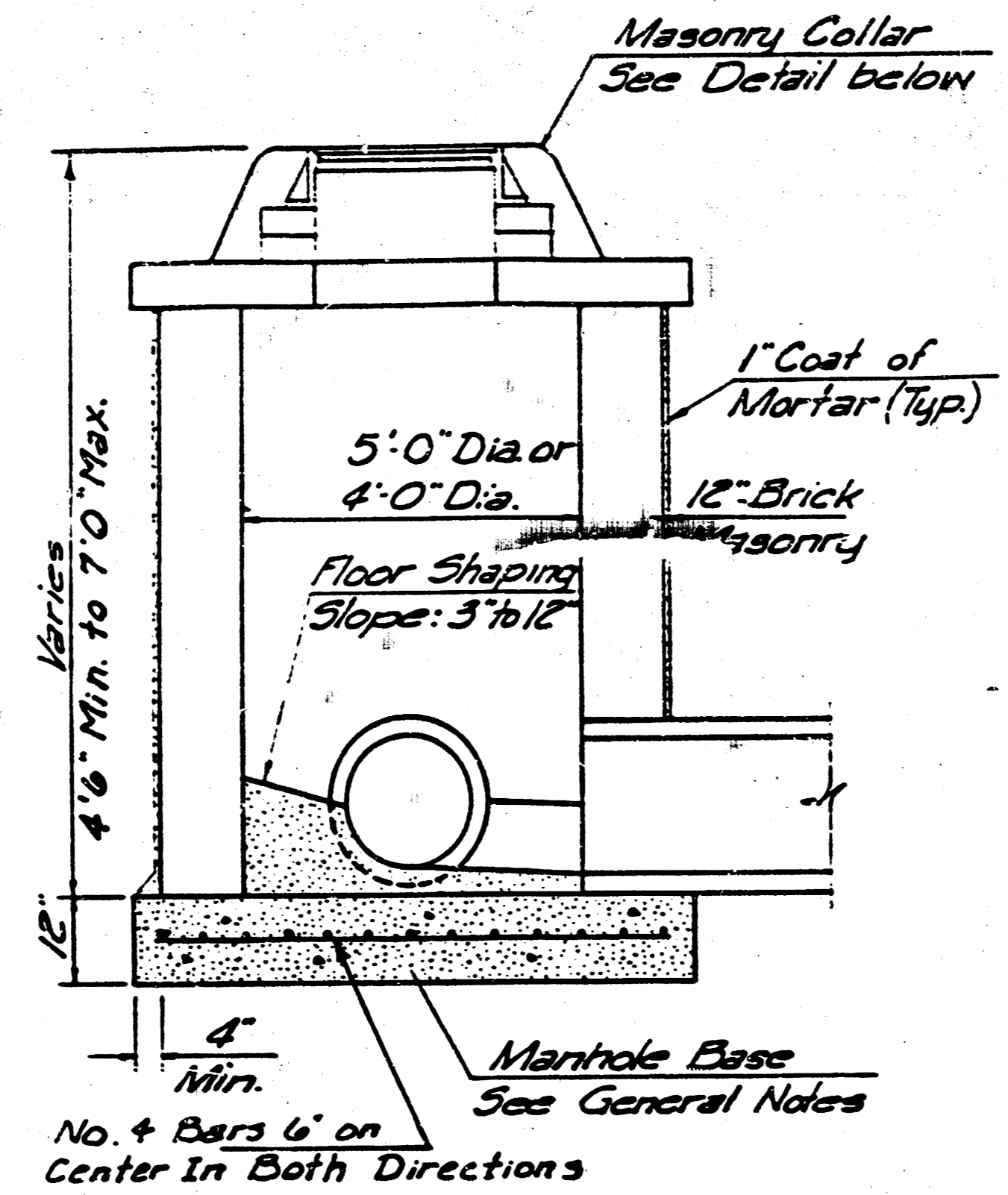
PROFILE LINE 1

AS BUILT
 12-11-85
 GREENE

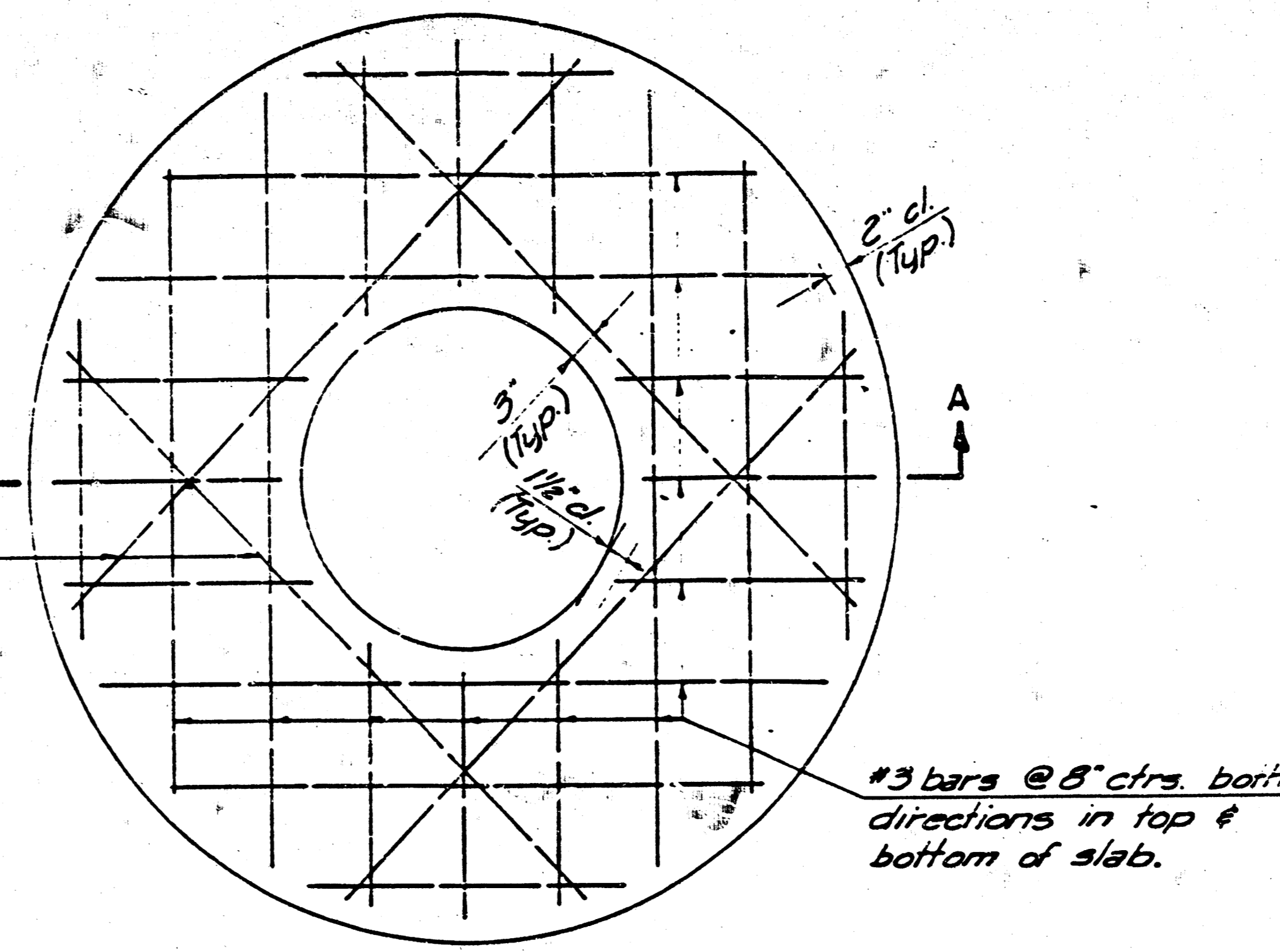
2/5
 M.K.E.C.



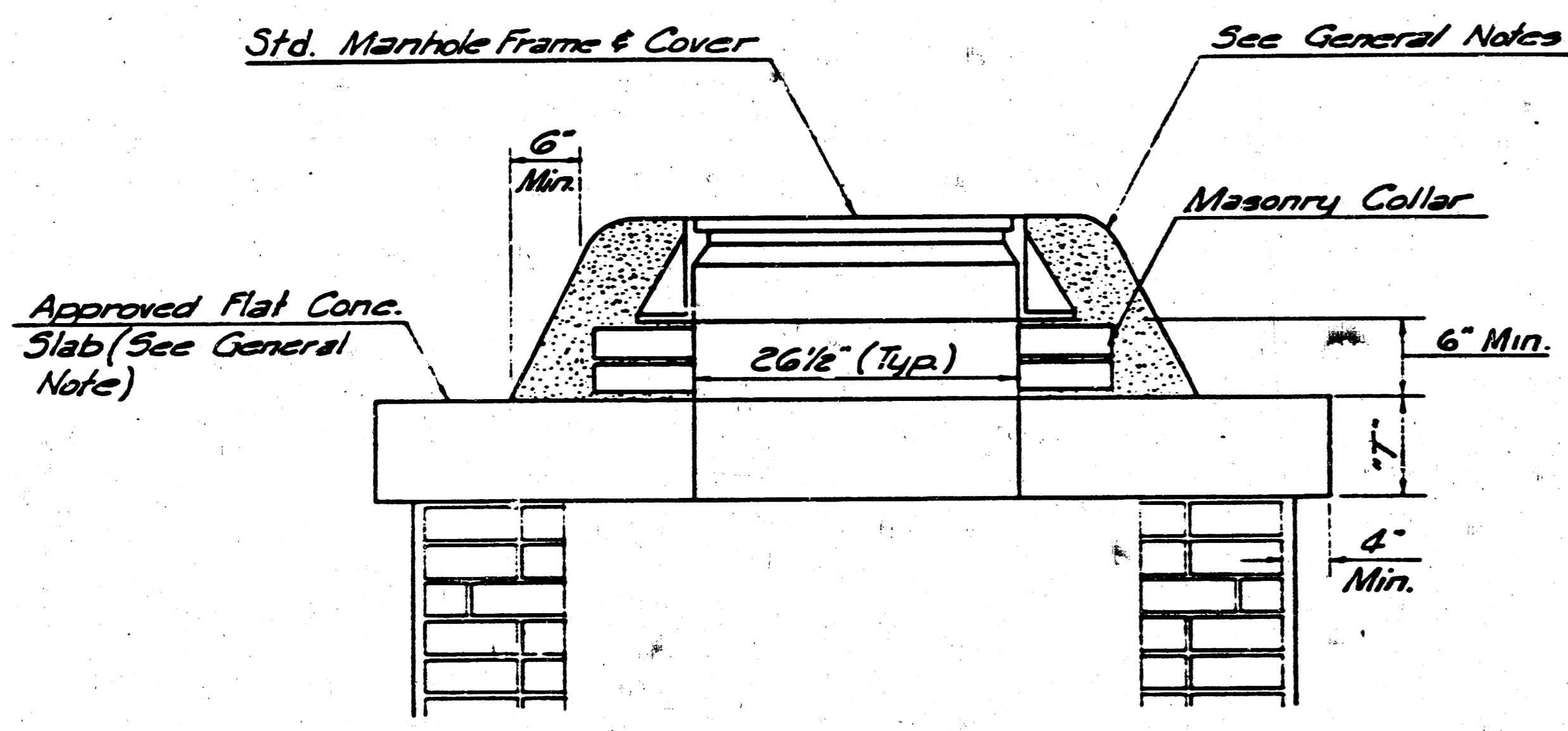
SHALLOW TYPE "A" MANHOLE



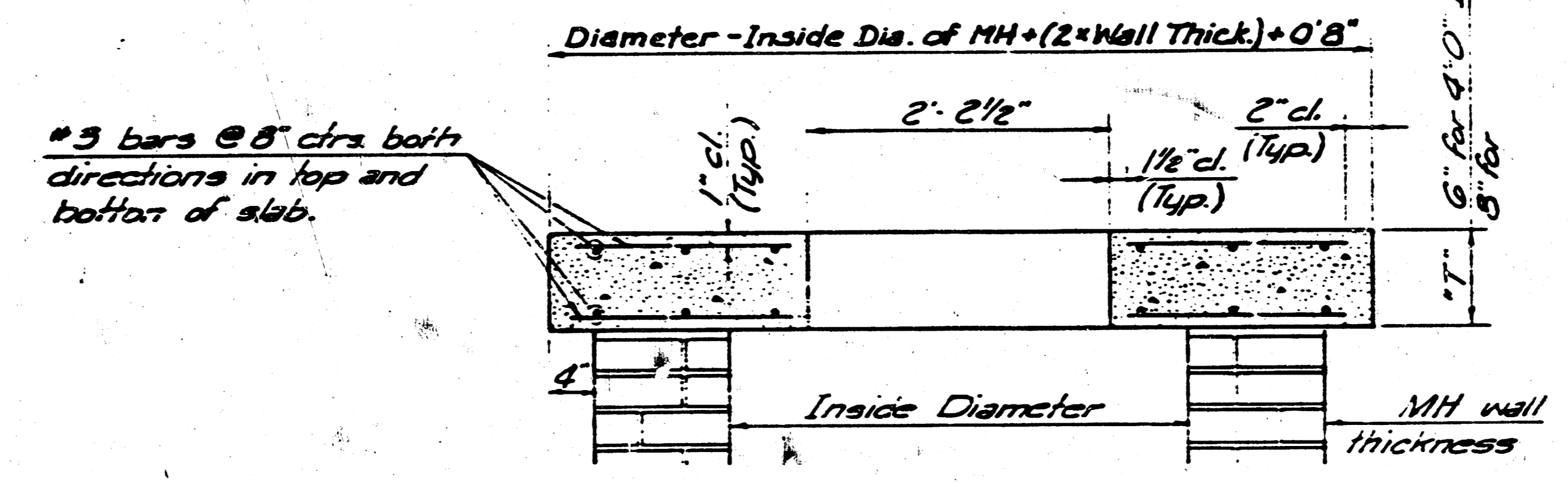
SHALLOW TYPE "B" MANHOLE



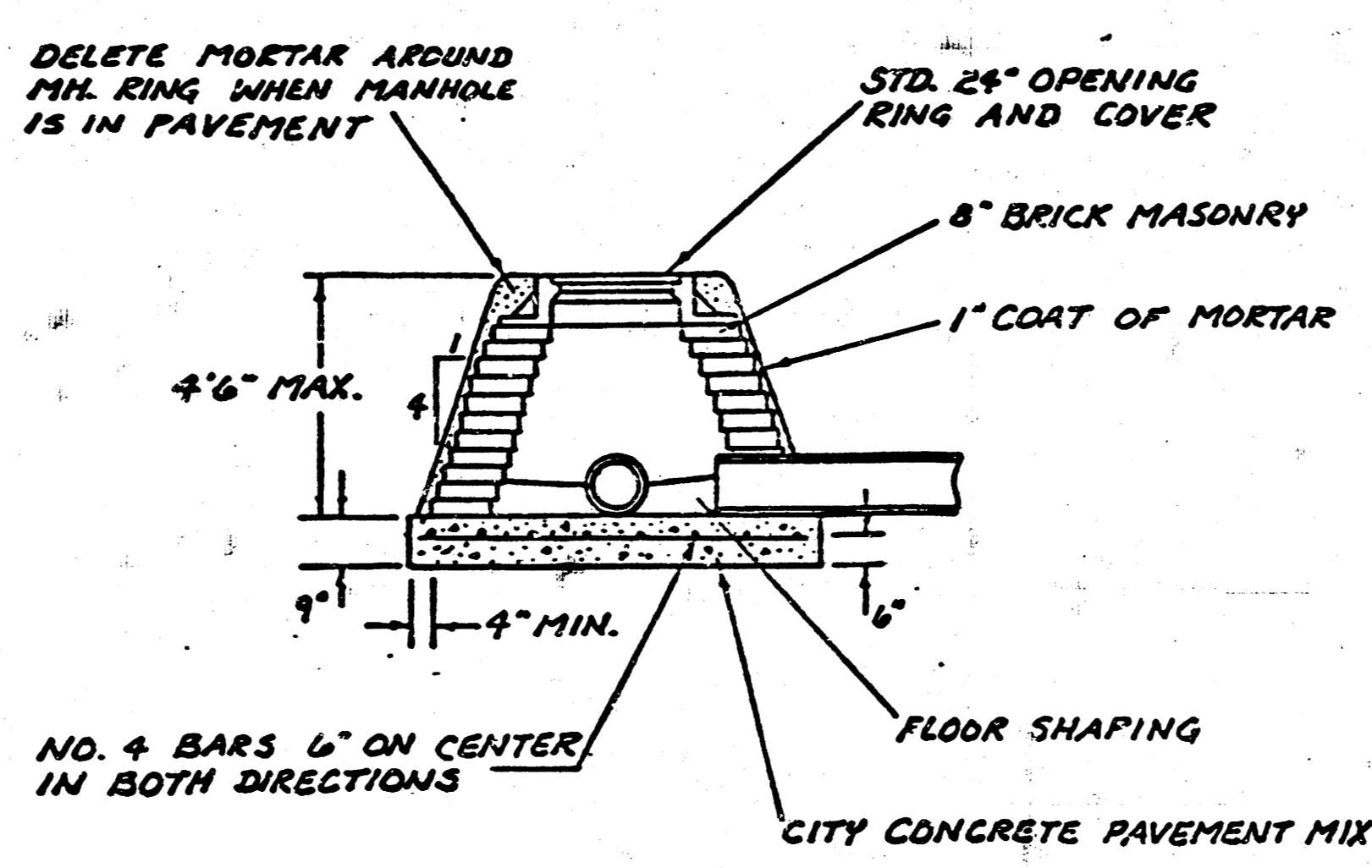
PLAN



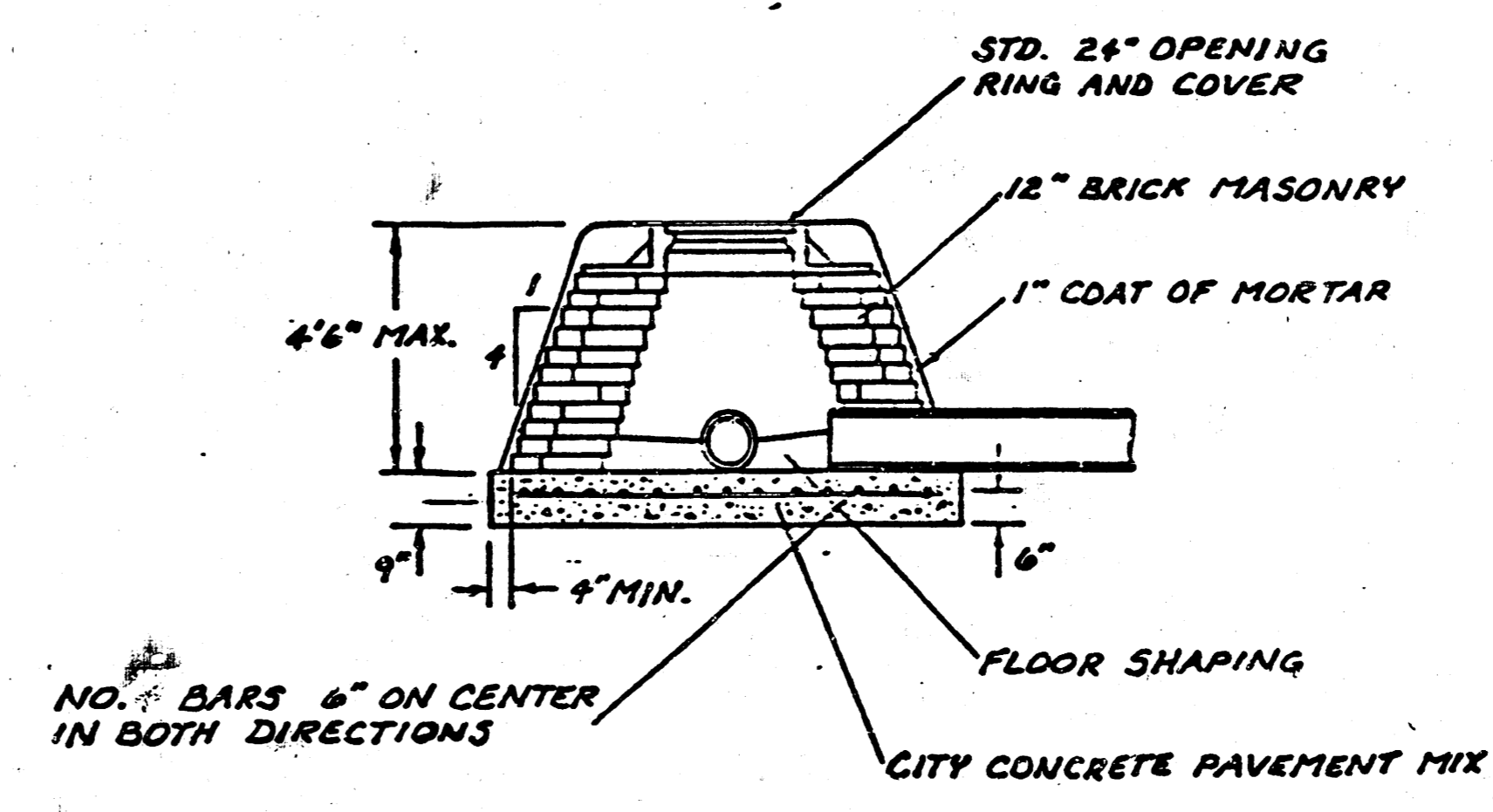
MASONRY COLLAR DETAIL



SECTION A-A
FLAT CONCRETE SLAB DETAILS



SPECIAL SHALLOW TYPE 'A' MANHOLE



SPECIAL SHALLOW TYPE 'B' MANHOLE

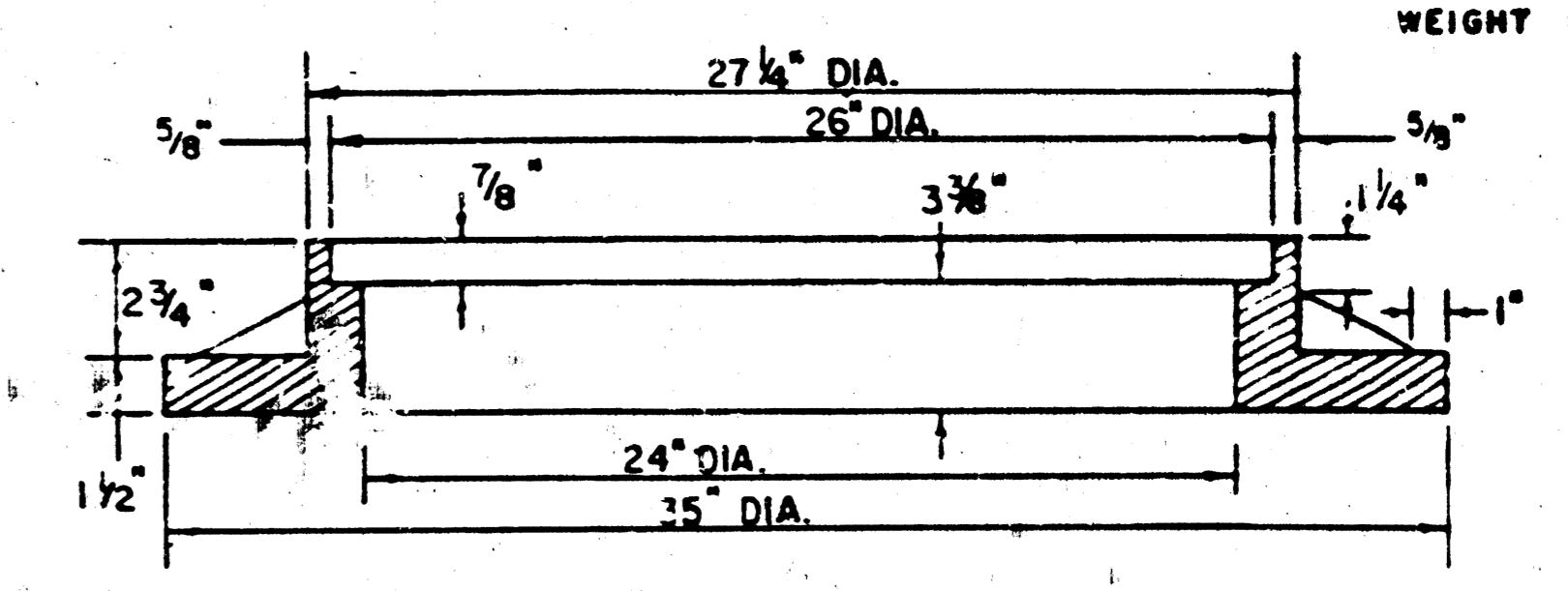
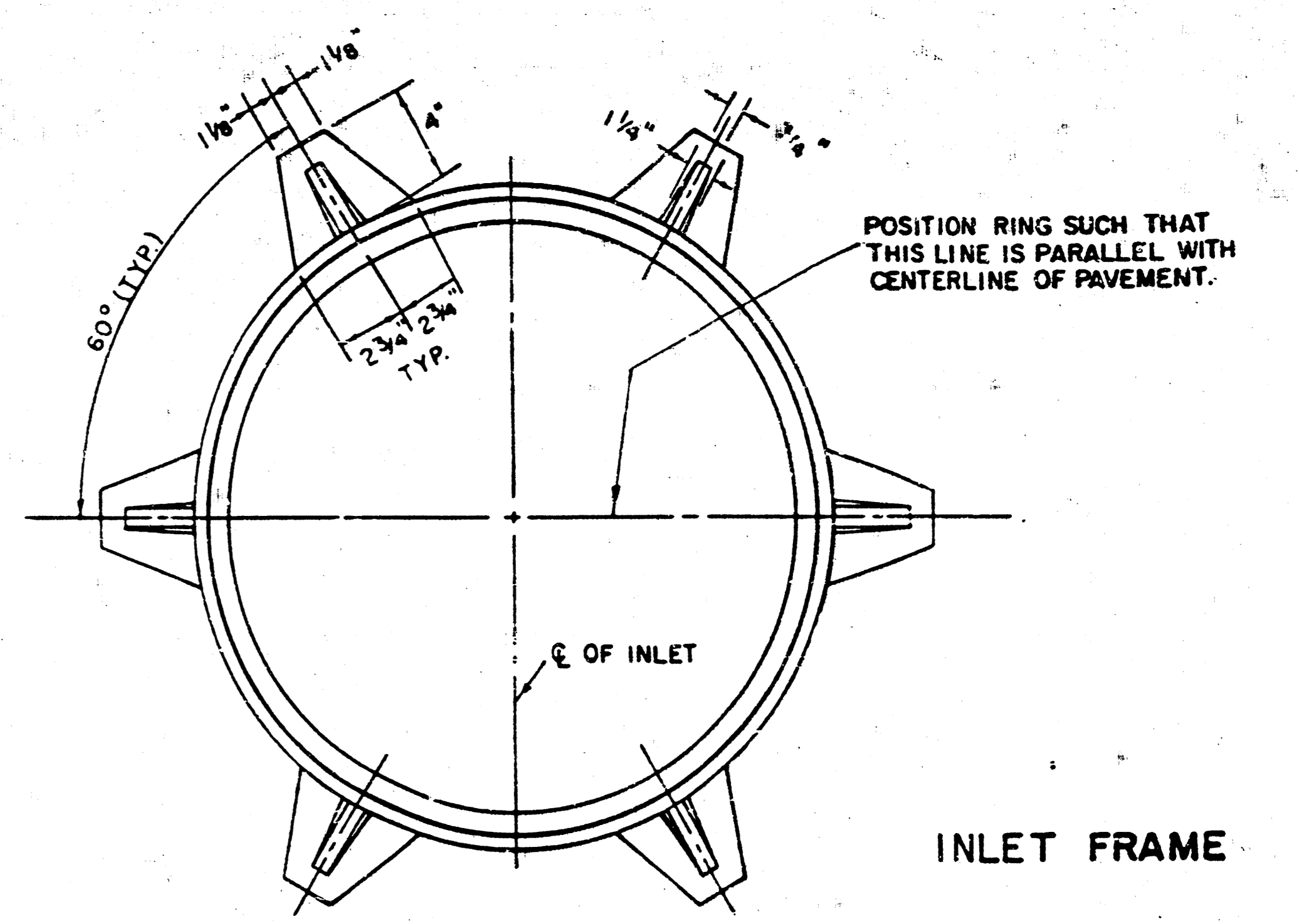
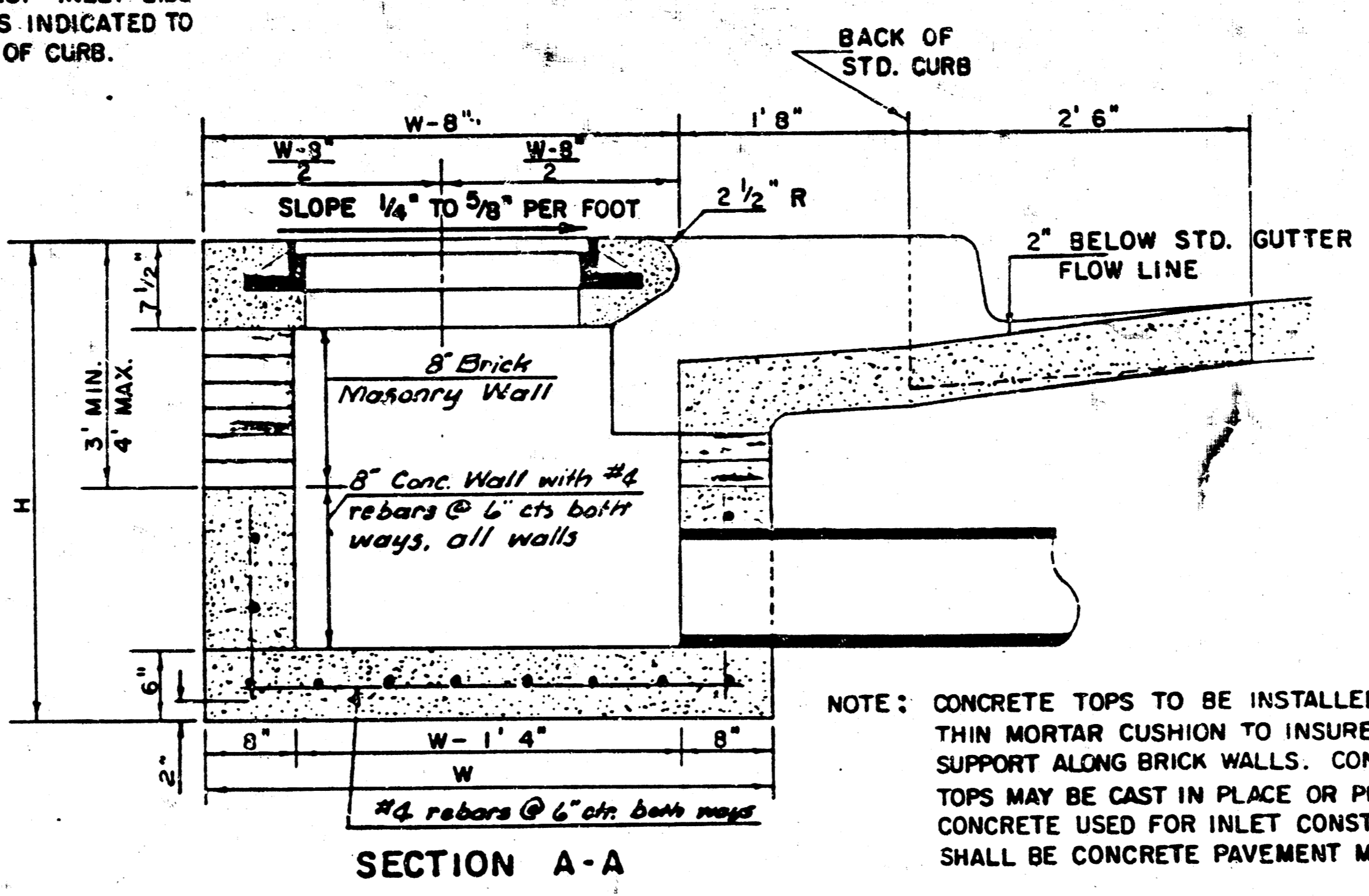
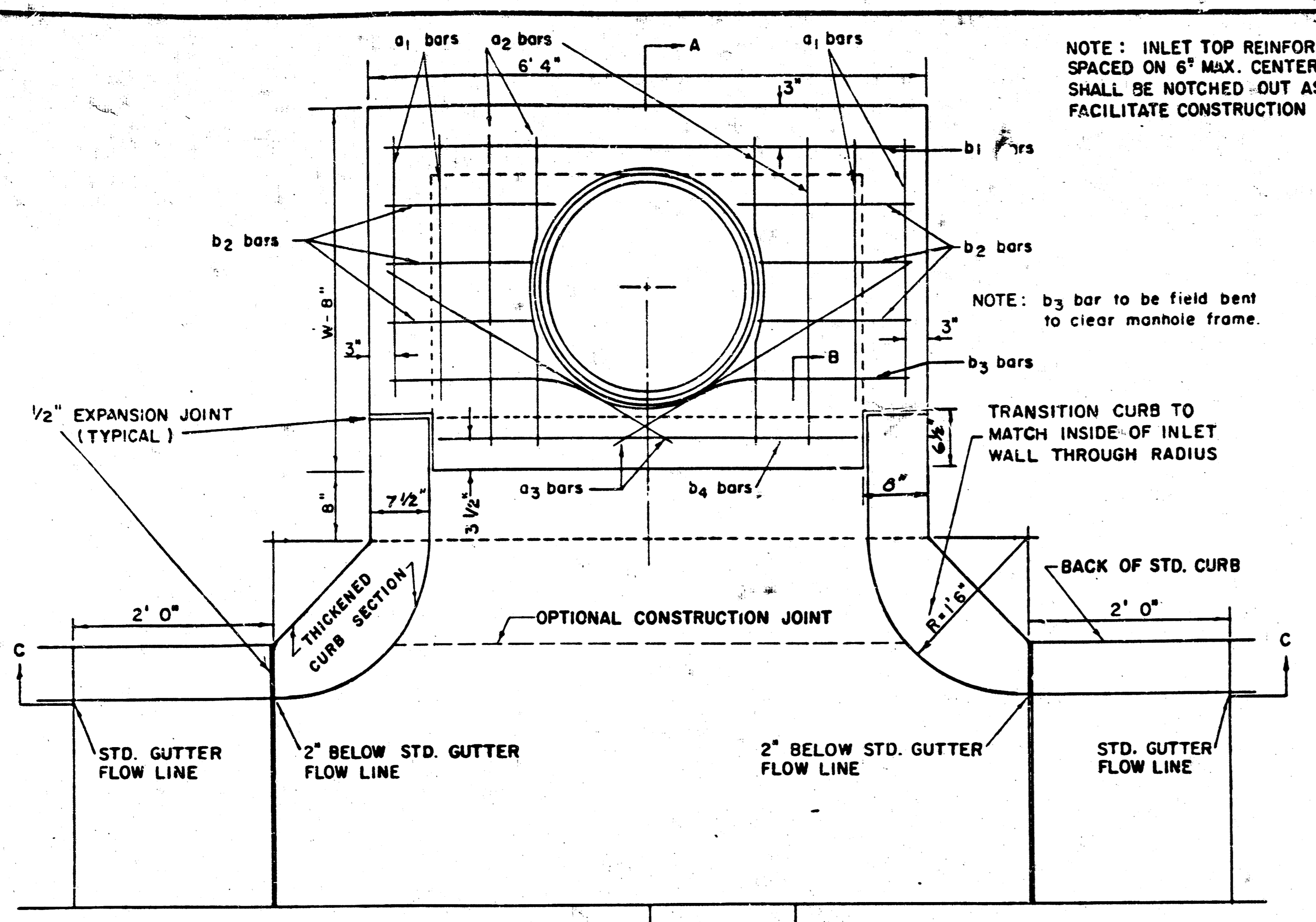
GENERAL NOTES

- MORTAR USED IN MASONRY CONSTRUCTION SHALL CONTAIN 8 SACKS OF CEMENT PER CUBIC YARD. CONCRETE USED IN MANHOLE BASES SHALL CONFORM TO THE REQUIREMENTS OF CONCRETE FOR CONCRETE PAVEMENT CONSTRUCTION AS SPECIFIED IN THE CITY STANDARD PAVING SPECIFICATIONS USING CITY CONCRETE MIX WITHOUT AIR ENTRAINING ADMIXTURE. MORTAR SHALL BE PLACED AROUND THE MANHOLE RING AS SHOWN ON THE DRAWINGS WHEN MANHOLES ARE CONSTRUCTED IN UNPAVED AREAS. TYPE "A" SHALLOW MANHOLES CAN BE USED ON SEWERS WHEN THE MANHOLE IS NOT LOCATED WITHIN PUBLIC STREET PAVEMENT. MANHOLES CONSTRUCTED WHERE PIPE SIZES ARE SMALLER THAN 24" SHALL HAVE AN INSIDE DIAMETER OF 4". MANHOLES CONSTRUCTED WHERE PIPE SIZES ARE 24" OR LARGER SHALL HAVE AN INSIDE DIAMETER OF 5". COMPLETED MANHOLE SHALL BE WITHOUT LEAKS AND WATER TIGHT.
- REINFORCING STEEL SHALL BE INSTALLED IN THE MANHOLE BASES AND SHALL CONSIST OF NO. 4 BARS PLACED ON 6" CENTERS IN BOTH DIRECTIONS. THE MANHOLE BASE REINFORCEMENT SHALL BE PLACED 6" ABOVE THE BOTTOM OF THE MANHOLE BASE. ALL COSTS FOR FURNISHING AND INSTALLING REINFORCING STEEL SHALL BE INCLUDED IN THE UNIT PRICE BID FOR THE MANHOLE.
- THE FLOORS OF ALL MANHOLES SHALL BE SHAPED WITH FLOW CHANNELS SUCH THAT THE MANHOLES WILL BE SELF CLEANING AND FREE OF AREAS WHERE SOLIDS COULD BE DEPOSITED AS SEWAGE FLOWS THROUGH THE MANHOLE FROM ALL INLET PIPES TO THE OUTLET PIPE. FLOW CHANNELS SHALL BE FORMED TO MATCH THE BOTTOM HALVES OF THE INFLOWING PIPES AND THE OUTFLOWING PIPE AS SHOWN BY THE DRAWINGS. MANHOLE FLOORS SHALL HAVE SLOPES OF 3 INCHES PER FOOT IN THE AREAS OUTSIDE OF THE FLOW CHANNELS SLOPED TOWARD THE FLOW CHANNELS. PIPES LAID THROUGH MANHOLES SHALL HAVE THE TOP HALF REMOVED TO MEET LINES FOR THE FULL INSIDE DIAMETER OF THE MANHOLE. MANHOLE FLOORS SHALL THEN BE SHAPED AROUND THE BOTTOM HALF OF THE PIPE WHICH FORMS THE FLOW CHANNEL.
- PIPES INSTALLED WITHIN THE EXCAVATION MADE FOR THE MANHOLE SHALL BE CRAZLED WITH CONCRETE TO THE LIMITS OF THE MANHOLE EXCAVATION. WHEN CLAY PIPE IS USED, THE CRADLE SHALL EXTEND TO THE FIRST JOINT OUTSIDE THE MANHOLE. THE CRADLE SHALL BE TERMINATED AT THE CLAY PIPE JOINT IN A MANNER WHICH WILL MAINTAIN THE FLEXIBILITY OF THE JOINT. COST OF CRADLE WITHIN MANHOLE EXCAVATION OR TO CLAY PIPE JOINTS ADJACENT TO MANHOLE SHALL BE INCLUDED IN THE UNIT PRICE BID FOR THE MANHOLE.
- MANHOLE COVER CASTINGS AND MANHOLE FRAME CASTINGS SHALL CONFORM TO THE REQUIREMENTS AS INDICATED IN THE STANDARD SPECIFICATIONS AND AS SHOWN IN THE STANDARD DETAIL DRAWINGS.
- THE CROWNS OF INFLOWING PIPES SHALL NEVER BE SET LOWER THAN THE CROWN OF THE OUTFLOWING PIPE.
- STANDARD SHALLOW MANHOLES TYPE "A" AND "B" SHALL BE PAID FOR AT THE UNIT PRICE BID PER EACH FOR THE TYPE AND DIAMETER INDICATED. STANDARD SPECIAL SHALLOW MANHOLES TYPE "A" AND "B" SHALL BE PAID FOR AT THE UNIT PRICE BID PER EACH FOR THE TYPE INDICATED. ALL STANDARD SHALLOW MANHOLE DIAMETERS WILL BE 4' UNLESS INDICATED OTHERWISE.

CITY OF WICHITA, KANSAS
STANDARD SHALLOW MANHOLES
TYPE 'A' AND TYPE 'B'

| | | | |
|---|------------|---------|---|
| SYCAMORE VILLAGE 4TH. | | 3/5 | 3 |
| STORM WATER SEWER NO. 289 | | | |
| PROJ. NO. 468-76-245-814-66-000-000-001 | | 5 | 5 |
| Designed by | Checked by | | |
| Drawn by | Date | Job No. | |

FILMED FROM THE BEST AVAILABLE COPY



NOTE: CONTRACTOR SHALL HAVE THE OPTION OF CONSTRUCTING 8" BRICK MASONRY WALLS BETWEEN THE CONCRETE INLET BASE AND TOP ON THIS INLET WHEN W = 6'4" AND H = 7'0" OR LESS.

ADDITIONAL CURB AND GUTTER CONSTRUCTION NECESSARY TO CONNECT SET-BACK INLET TO PAVEMENT WILL BE PAID FOR AT THE UNIT PRICE BID FOR EACH INLET HOOKUP.

INLET INVERT SHALL BE SHAPED WITH 8 SACK SAND MIX CONCRETE TO CREATE FLOW CHANNELS AND TO INCREASE HYDRAULIC EFFICIENCY SUCH THAT THE INLET WILL BE SELF-CLEANING BETWEEN ALL INLET AND/OR OUTLET PIPES.

THE ENDS OF ALL PIPES INSTALLED IN INLETS SHALL BE CUT OFF FLUSH WITH THE INSIDE FACE OF THE INLET WALL.

NOTE: EXPANSION JOINT ONLY IN CURB AREA WITH CONC. PAVEMENT.

PLAN

BENDING DIAGRAM

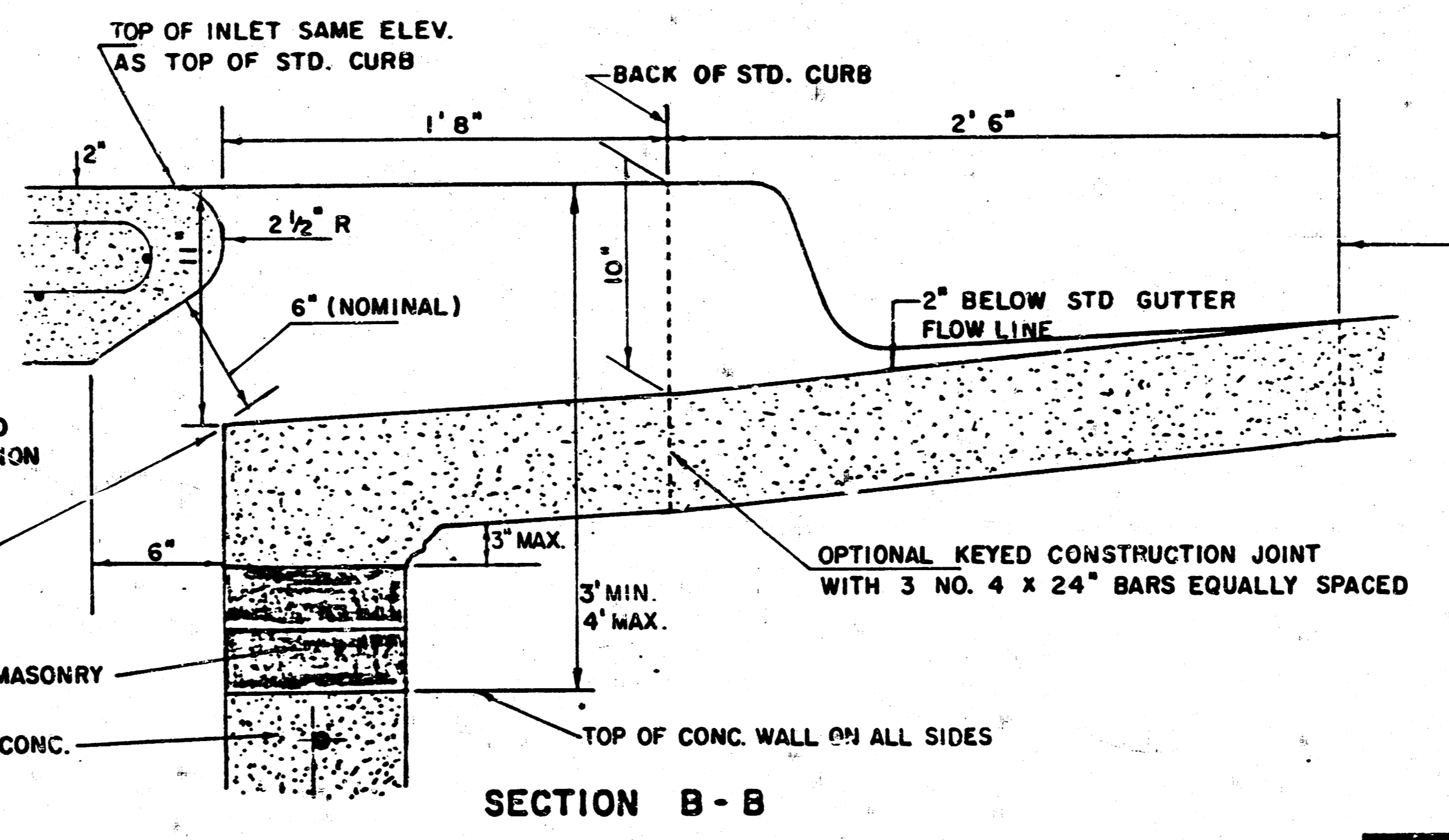
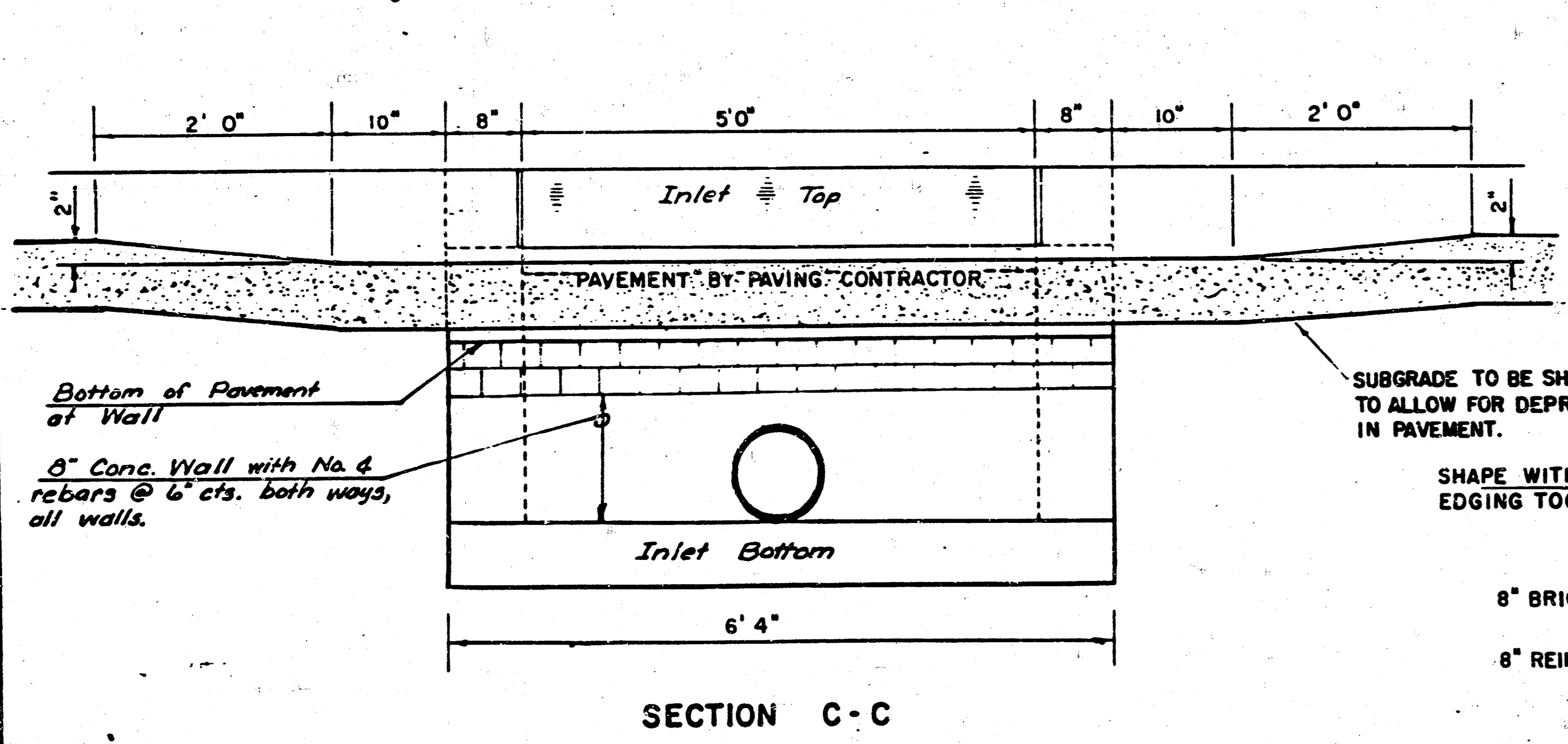
STEEL SCHEDULE

| BAR | a1 | a2 | a3 | b1 | | | | b2 | b3 | b4 | WT. LBS. | |
|--------|-------|-------|------|------|------|------|------|------|------|------|----------|------|
| NUMBER | 4 | 4 | 2 | 1 | 3 | 5 | 7 | 9 | 6 | 1 | | |
| SIZE | #4 | #4 | #4 | #4 | #4 | #4 | #4 | #4 | #4 | #6 | | |
| W=4'4" | 5'7" | 6'7" | 4'0" | 6'1" | - | - | - | - | 1'9" | 6'2" | 4'8" | 60± |
| W=5'4" | 7'7" | 8'7" | 5'0" | 6'1" | - | - | - | - | 1'9" | 6'2" | 4'8" | 81± |
| W=6'4" | 9'7" | 10'7" | 6'0" | - | 6'1" | - | - | - | 1'9" | 6'2" | 4'8" | 101± |
| W=7'4" | 11'7" | 12'7" | 7'0" | - | - | 6'1" | - | - | 1'9" | 6'2" | 4'8" | 121± |
| W=8'4" | 13'7" | 14'7" | 8'0" | - | - | - | 6'1" | 1'9" | 6'2" | 4'8" | 141± | |

* NOTE: a3 BARS TO BE PLACED APPROX. 2" BELOW TOP OF INLET COVER

STANDARD CURB INLET PRECAST TOPS

| W | PRE-CAST TOP SIZE | PIPE SIZE | CU. YD. CONC. |
|-------|------------------------|---------------|---------------|
| 4' 4" | 3' 6" x 6' 4" x 7 1/2" | 21" Ø SMALLER | 0.38 ± |
| 5' 4" | 4' 6" x 6' 4" x 7 1/2" | 24" Ø 30" | 0.51 ± |
| 6' 4" | 5' 6" x 6' 4" x 7 1/2" | 36" Ø 42" | 0.64 ± |
| 7' 4" | 6' 6" x 6' 4" x 7 1/2" | 48" Ø 54" | 0.77 ± |
| 8' 4" | 7' 6" x 6' 4" x 7 1/2" | 60" Ø 66" | 0.90 ± |



REVISED 12-21-1984

DETAIL STANDARD TYPE IA CURB INLET
CITY OF WICHITA, KANSAS
INLET OPENING = 6" x 5' 0"

SYCAMORE VILLAGE 4TH.
STORM WATER SEWER NO. 289
PROJ. NO. 468-76-245-81466-000-000-001

JUNE 1984

4/5

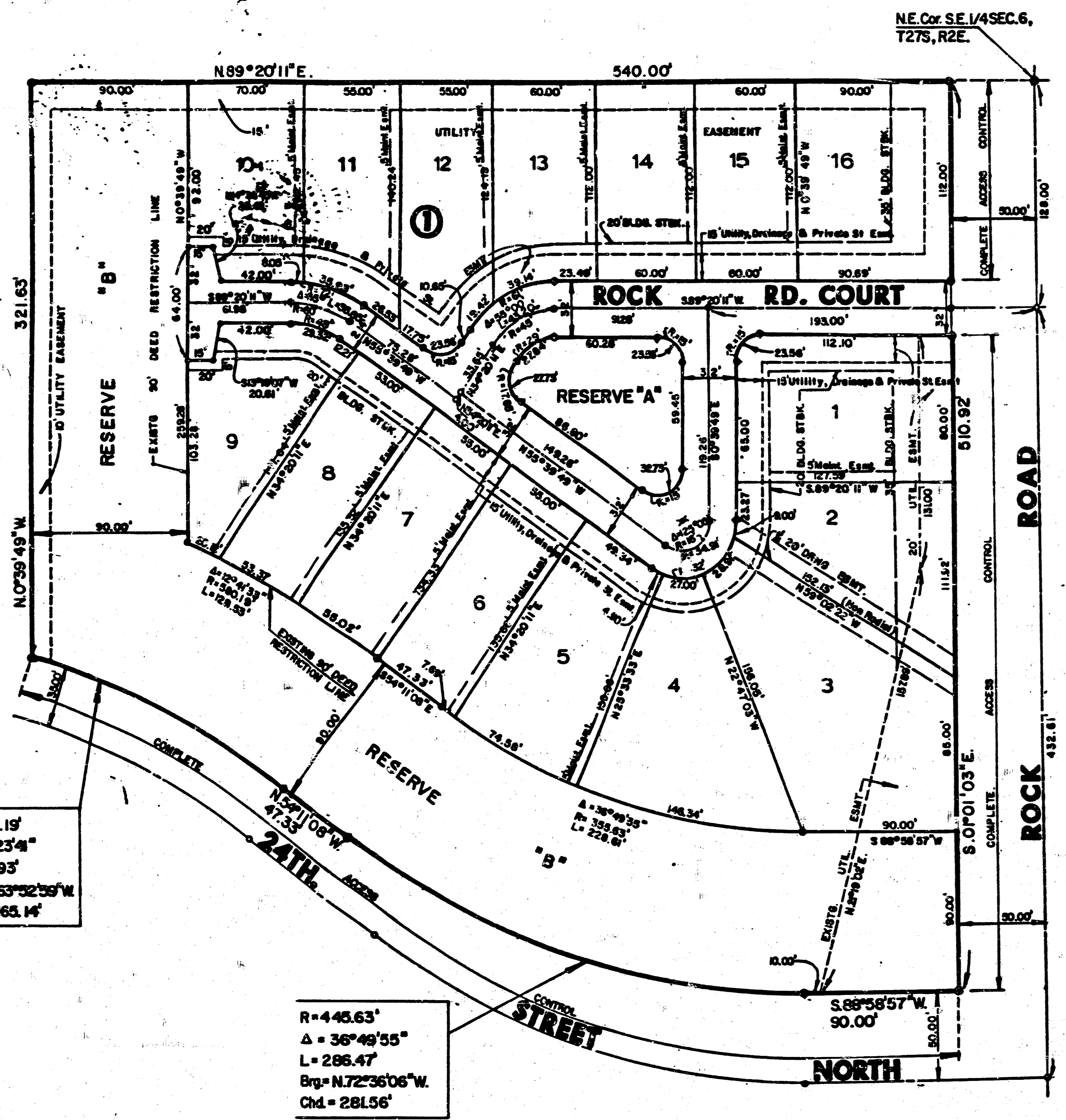
FILMED FROM THE BEST AVAILABLE COPY

SLT

87-4 T-W

FINAL PLAT OF SYCAMORE VILLAGE 4TH. ADDITION

AN ADDITION TO WICHITA, SEDGWICK COUNTY, KANSAS



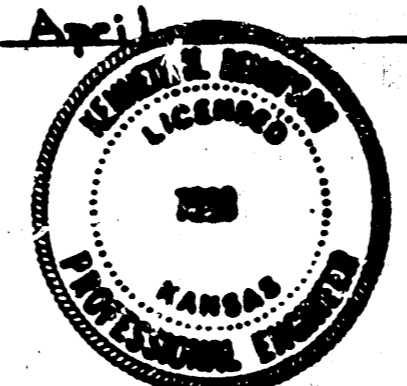
N
Scale: 1"=50'
LEGEND
● = Iron
ST = Street
DRNG = Drainage
STBK = Setback

I, Kenneth H. Bengtson, a Civil Engineer in Kansas, do hereby certify that I have been in responsible charge of surveying and platting of "SYCAMORE VILLAGE 4TH ADDITION" an addition to Wichita, Sedgwick County, Kansas, into lots, a block, and reserves, the same being accurately set forth in the accompanying plat and described as follows:

A replat of Lot 10, Block 4, "SYCAMORE VILLAGE 3RD ADDITION", an addition to Wichita, Sedgwick County, Kansas located in the southeast quarter of Section 6, Township 27 South, Range 2 East of the 6th P.M..

I hereby certify that the details of this plat are correct to the best of my knowledge and belief this 10 day of April 1985.

Kenneth H. Bengtson
Kenneth H. Bengtson
Mid-Kansas Engineering Consultants, P.A.
3500 N. Rock Road, Bldg. 290
Wichita, KS 67225



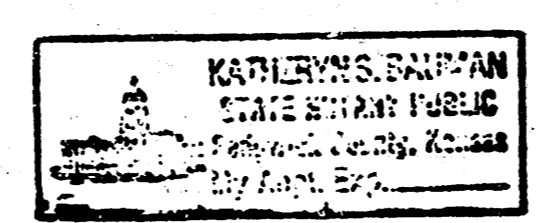
Know all men by these presents that we the undersigned property owners of the land as above set forth in the Civil Engineers Certificate, have caused the same to be surveyed and platted into lots, a block, and reserves the same to be known as "SYCAMORE VILLAGE 4TH ADDITION" an addition to Wichita, Sedgwick County, Kansas. Easements for the construction and maintenance of public utilities, and drainage as indicated on the accompanying plat are hereby granted. Reserve "A", is for a private street, drainage, utilities, parking and landscaping. Reserve "B" is for utilities, drainage, landscaping, and open space. All reserves shall be owned and maintained by the Homeowners Association. All abutting rights of access to or from Rock Road over and across the west right-of-way line of Rock Road and to or from 24th Street North over and across the south line of said addition are hereby granted to the City of Wichita, Kansas provided however, that the subdivision shall have access to Rock Road at one location as shown on the accompanying plat. The lot and easements within the above described property are being vacated and replatted by virtue of K.S.A. 12-512(b). The maintenance easements are granted for access by the adjoining property owner for maintenance of their structures and a 20 foot roof overhang.

By: *David E. Sproul*
David E. Sproul
Sproul Construction Company

STATE OF KANSAS
COUNTY OF SEDGWICK

Be it remembered that on this 10th day of April 1985, before me, a Notary Public in and for said State and County, came David E. Sproul on behalf of Sproul Construction Company to me personally known to be the same person who executed the foregoing instrument of writing and duly acknowledged the execution of the same, in testimony whereof I have hereunto set my hand and affixed my notarial seal the day and year above written.

Kathryn S. Bruman, Notary Public
My Appointment Expires: 1-24-87



The Wichita-Sedgwick County Metropolitan Area Planning Commission, Wichita, Kansas has received and approved this plat of "SYCAMORE VILLAGE 4TH ADDITION".

Dated this 21 day of March, 1985.

Wichita-Sedgwick County Metropolitan Area Planning Commission
James C. Wilson, Chairman
Robert A. Lakin, Secretary

This plat approved and all dedications shown hereon, if any, accepted by the City Commission of the City of Wichita, Kansas, this 21st day of April, 1985.

Ed Brown, Mayor
Donald C. Glisick, City Clerk

Entered on transfer record this 20th day of May 1985.
Don Wright, County Clerk

STATE OF KANSAS
COUNTY OF SEDGWICK

This is to certify that this instrument was filed for record in the Register of Deeds Office at 3:00 PM this 22th day of May, 1985.

Pat Kottler, Register of Deeds
Ed Rassa, Deputy

R=490.19'
Δ=19°23'41"
L=165.93'
Brg.=N63°02'39"W
Chd.=165.14'

R=445.63'
Δ=36°49'55"
L=206.47'
Brg.=N72°36'06"W
Chd.=281.56'

SYCAMORE VILLAGE 4TH.
STORM WATER SEWER NO. 289
PROJ. NO. 468-76-245-81466-000-000-001

5/5

19 10 1 13

FILMED FROM THE BEST AVAILABLE COPY