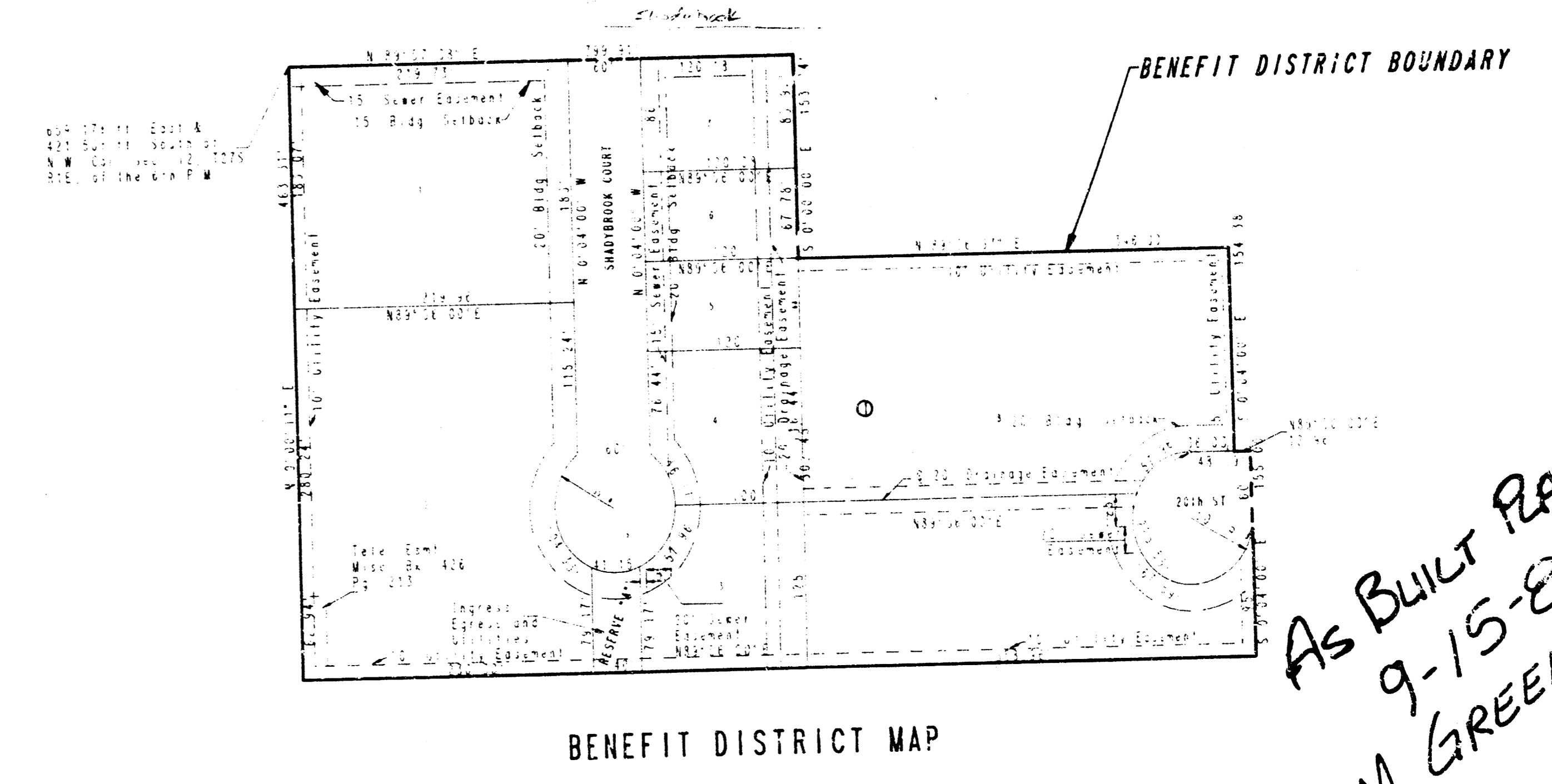
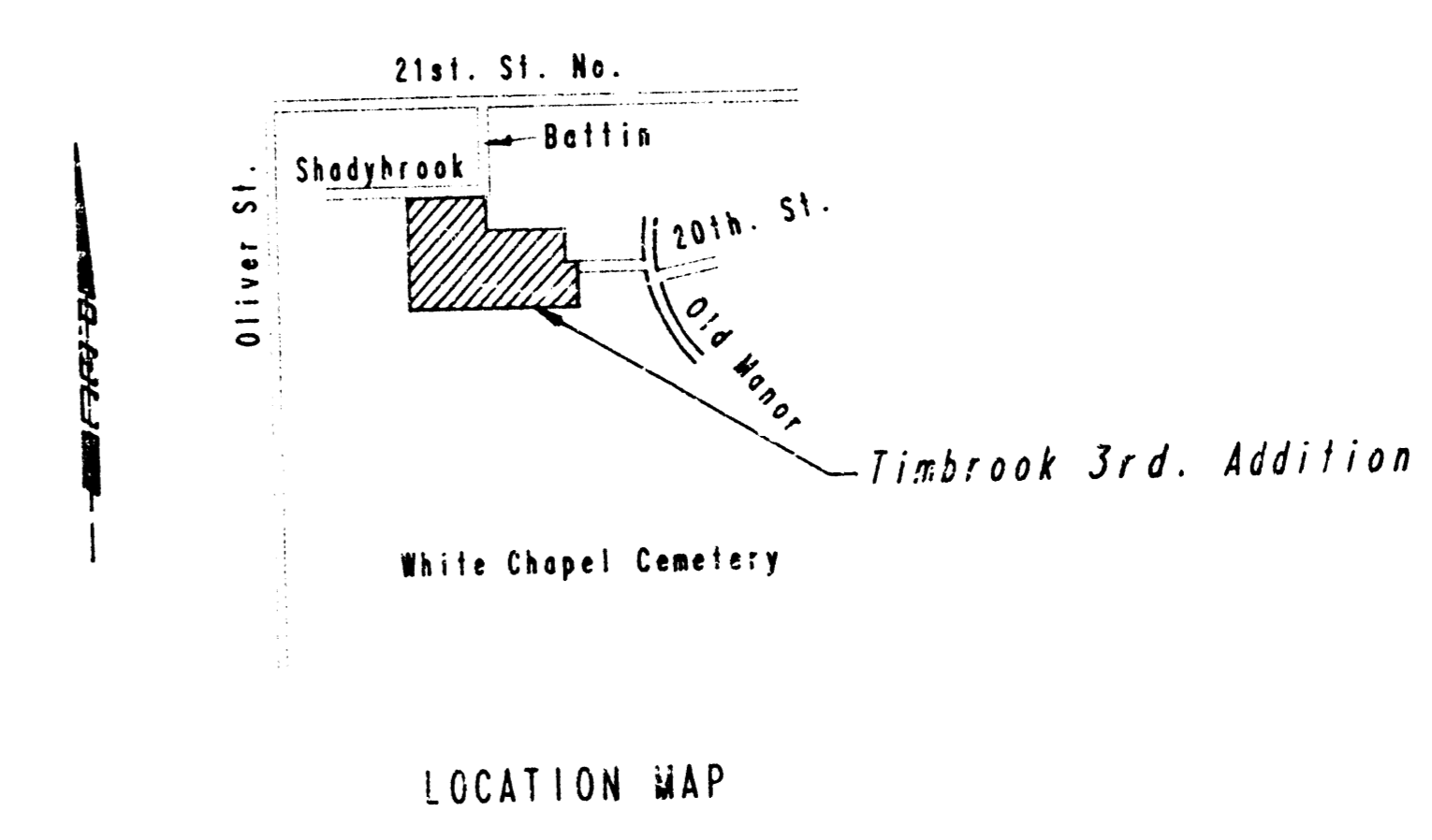
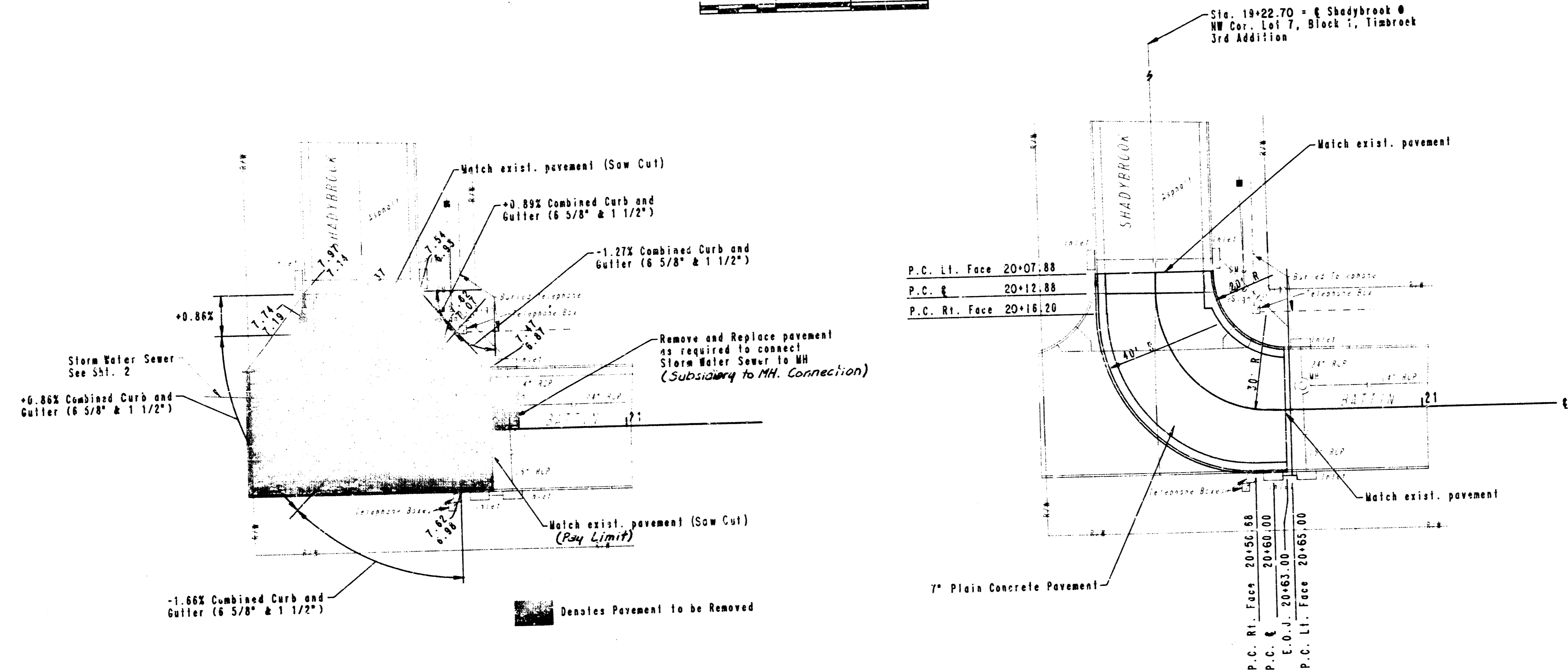
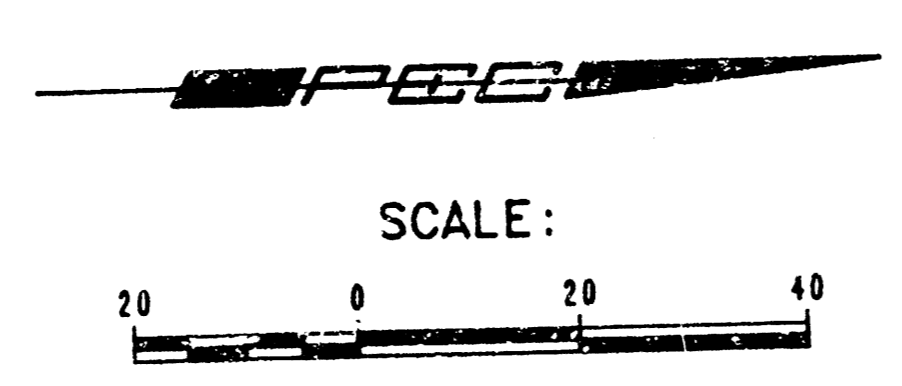


TIMBROOK 3RD. ADDITION

WICHITA, SEDGWICK COUNTY, KANSAS

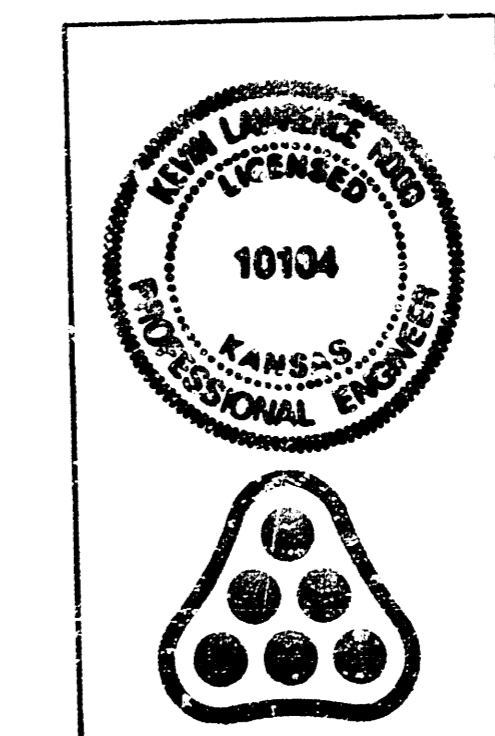
STORM WATER SEWER NO. 300

City of Wichita Proj. No. 468-76-245-81511-000-000-001



GENERAL NOTES

1. ALL ELEVATIONS SHOWN ARE CITY OF WICHITA DATUM (3565-1187.4 = CITY DATUM).
2. THE CONTRACTOR SHALL BE RESPONSIBLE FOR PRESERVING PROPERTY IRONS. THE CONTRACTOR SHALL BE REQUIRED TO RE-ESTABLISH ANY PROPERTY IRONS WHICH ARE DAMAGED OR DESTROYED BY HIS CONSTRUCTION OPERATIONS. SUCH IRONS SHALL BE RE-ESTABLISHED BY A LICENSED LAND SURVEYOR OR A LICENSED PROFESSIONAL ENGINEER IN ACCORDANCE WITH STATE LAWS. ALL COST FOR THIS WORK SHALL BE SUBSIDIARY TO THE OTHER ITEMS OF WORK.
3. COORDINATION WITH PAVING. IT IS IMPERATIVE THAT THE CONTRACTOR COORDINATE STORM WATER SEWER CONSTRUCTION WITH THE PAVING CONTRACTORS.
4. AT LEAST 48 HOURS PRIOR TO BEGINNING EXCAVATION (EXCLUDING WEEKENDS AND HOLIDAYS), THE CONTRACTOR SHALL CONTACT THE KANSAS ONE-CALL SYSTEM, A UTILITY LOCATION SERVICE, AT 1-800-344-7233 TO REQUEST THE FOLLOWING: UTILITY COMPANIES TO LOCATE ANY EXISTING LINES WITHIN THE PROJECT AREA; GAS SERVICE COMPANY, KGBE.; THE WICHITA WATER DEPARTMENT, ARKLA GAS CO., AND AIR CAPITAL CABLEVISION.
5. THE CONTRACTOR MUST ALSO NOTIFY THE TELEPHONE COMPANY AT (316) 571-2115 48 HOURS PRIOR TO BEGINNING EXCAVATION AND REQUEST THAT ANY LINES WITHIN THE PROJECT AREA BE FLAGGED.
6. THE BURIED UTILITIES AS LOCATED ON THE PLANS ARE APPROXIMATE LOCATIONS ONLY. IT SHOULD BE NOTED THAT OTHER LINES AND CABLES MAY EXIST WHICH ARE NOT SHOWN ON THESE PLANS. THE CONTRACTOR SHALL EXERCISE EXTREME CAUTION DURING TRENCHING OPERATIONS TO AVOID DAMAGING THESE LINES. ANY LINES DAMAGED SHALL BE REPLACED OR REPAIRED IMMEDIATELY AS DIRECTED BY THE ENGINEER AT THE CONTRACTOR'S EXPENSE.
7. THE CONTRACTOR SHALL RESTORE ALL DITCHES, SWALES, ROAD SHOULDER ENTRIES, AND BANK LINES TO THEIR ORIGINAL SLOPES AND GRADES EXCEPT AS SHOWN OTHERWISE.
8. ALL SITE CLEARING AND GRUBBING SHALL NOT BE PAID FOR SEPARATELY, BUT SHALL BE CONSIDERED SUBSIDIARY TO OTHER ITEMS OF WORK.
9. THERE IS TO BE NO WORK STARTED BY THE CONTRACTOR PRIOR TO NOTIFICATION AND APPROVAL OF THE CONSTRUCTION ENGINEER OF CONSTRUCTION AND SURVEY DIVISIONS OF OPERATIONS AND MAINTENANCE AND ASSIGNMENT AND PRESENCE OF A DEPARTMENT INSPECTOR ON THE SITE. SHOULD CONSTRUCTION BE STARTED PRIOR TO THESE REQUIREMENTS BEING MET, THE CONTRACTOR WILL BE REQUIRED TO REOPEN THE DITCHES.
10. Saw cut to be subsidiary to other bid items of work.



Revision	By	Date
CITY OF WICHITA, KANSAS MICHAEL E. LINDEBAK P.E., CITY ENGINEER STORM WATER SEWER 300 TIMBROOK 3RD. ADDITION C. of W. Proj. No. 468-76-245-81511-000-000-001		
PROFESSIONAL ENGINEERING CONSULTANTS, P.A. ENGINEERS WICHITA, KANSAS		
Designed by KLR	Job No. 34-86130	Sht. 1 of 5
Drawn by TDS	Date March, 1986	

FILMED FROM THE BEST AVAILABLE COPY...

"A" Sta. 9+31.05, 5.8' RI. =
 SWS Sta. 0+00.00
 Break into exist' MH and
 install new 21" Pipe
 Grout water tight with non-
 shrink grout. Shape MH
 floor to provide smooth flow.

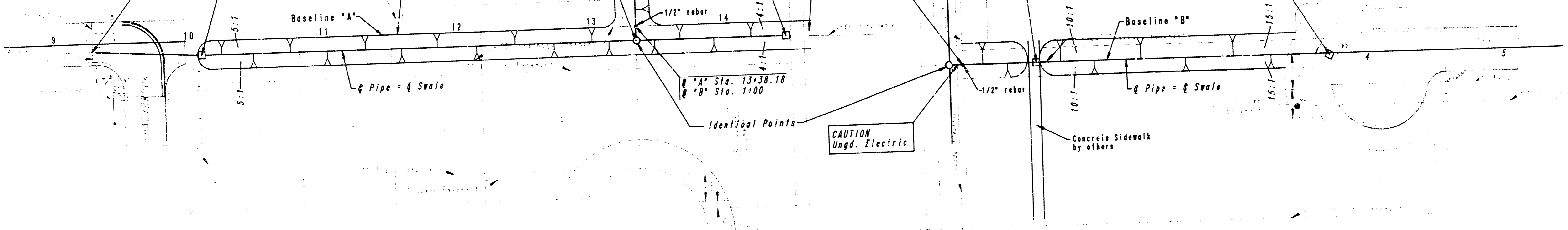
"A" Sta. 10+12.0, 10' RI. =
 SWS Sta. 0+81.05
 Const. Ditch Inlet Type 1
 L=4.0'; W=4.0'; H=5.23'
 91.06 L.F. 21" RCP (NE)
 Top El. 218.49 ~~219.5~~

"A" Sta. 13+38.18, 10' RI. =
 SWS Sta. 4+07.24
 Const. Washhole Shallow Type 'A'
 326.18 L.F. 18" RCP (N)
 Top El. 222.72

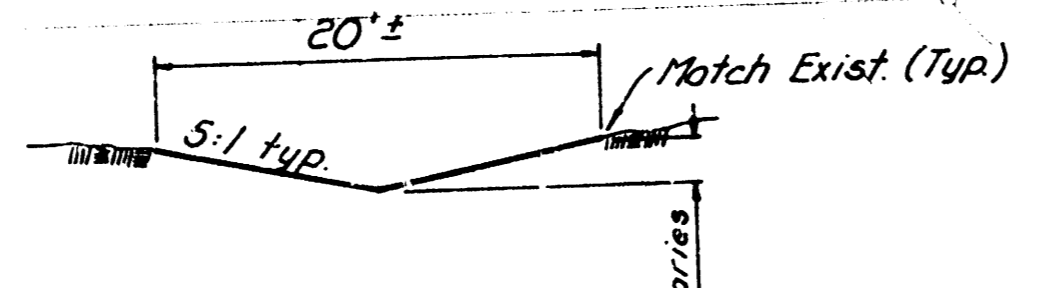
"A" Sta. 14+50.0, 10' RI. =
 SWS Sta. 5+19.06
 Const. Ditch Inlet Type 1
 L=4.0'; W=4.0'; H=4.60'
 177.82 L.F. 15" RCP (N)
 Top El. 222.99

"B" Sta. 1+55.0, 0' RI. =
 SWS Sta. 0+55.0
 Const. Ditch Inlet Type 1
 (Front Opening Only)
 L=4.0'; W=4.0'; H=3.84'
 65.0 L.F. 18" RCP (W)
 Top El. 224.60

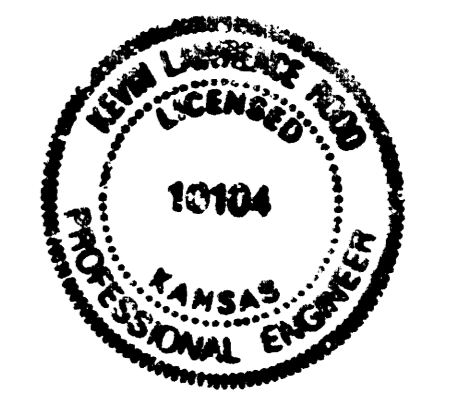
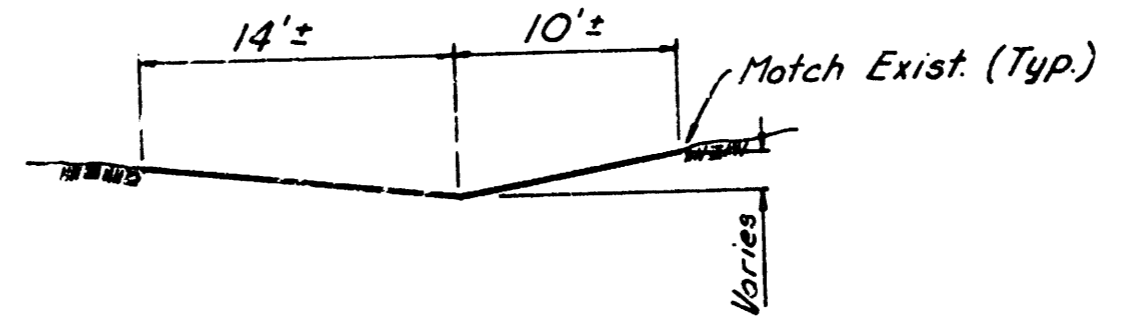
"B" Sta. 3+74.88, 1.19' RI. =
 SWS Sta. 2+84.88
 Const. Type 1A Curb Inlet
 W=4'-4"; H=4.05"
 218.88 L.F. 18" RCP (W)
 Top El. 227.00



TYPICAL SWALE SECTION



TYPICAL SWALE SECTION

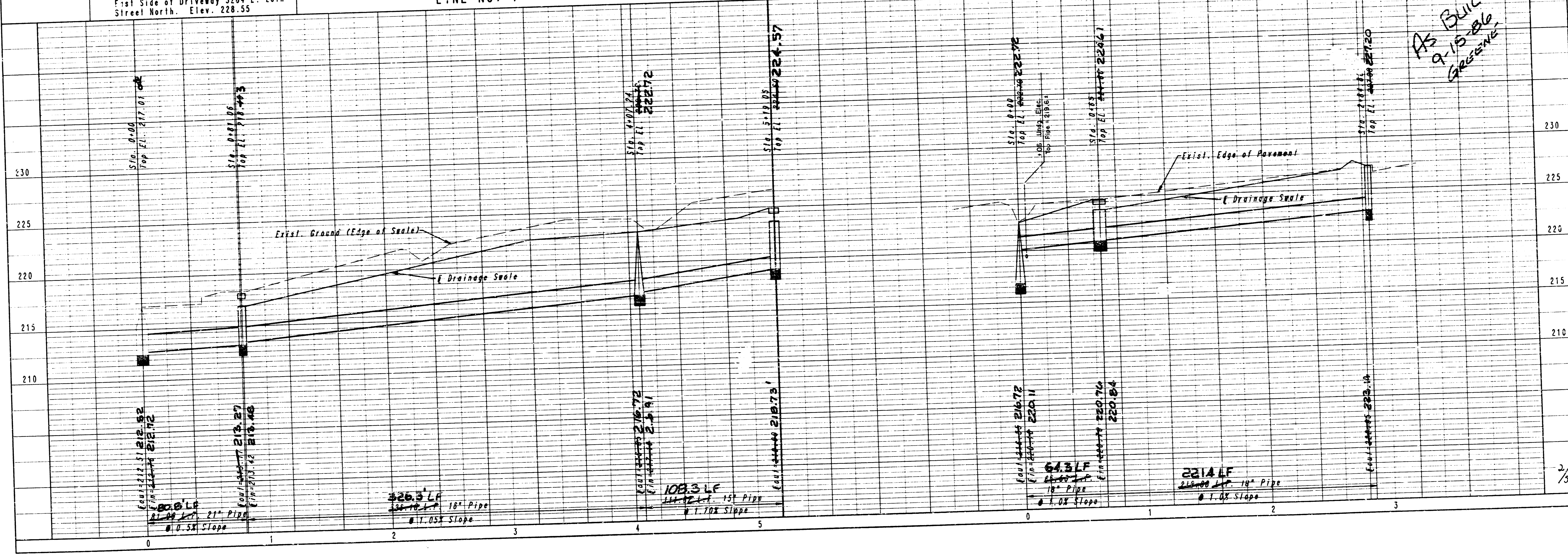


SCALE:
 PLAN: LAT. & LONG. 1" = 40'
 PROFILE: HORIZ. SAME AS ABOVE
 VERT. 1" = 5'

B.M. Top of Curb, North side 20th Street
 First Side of Driveway 5204 E. 20th
 Street North. Elev. 228.55

LINE NO. 1

LINE NO. 2



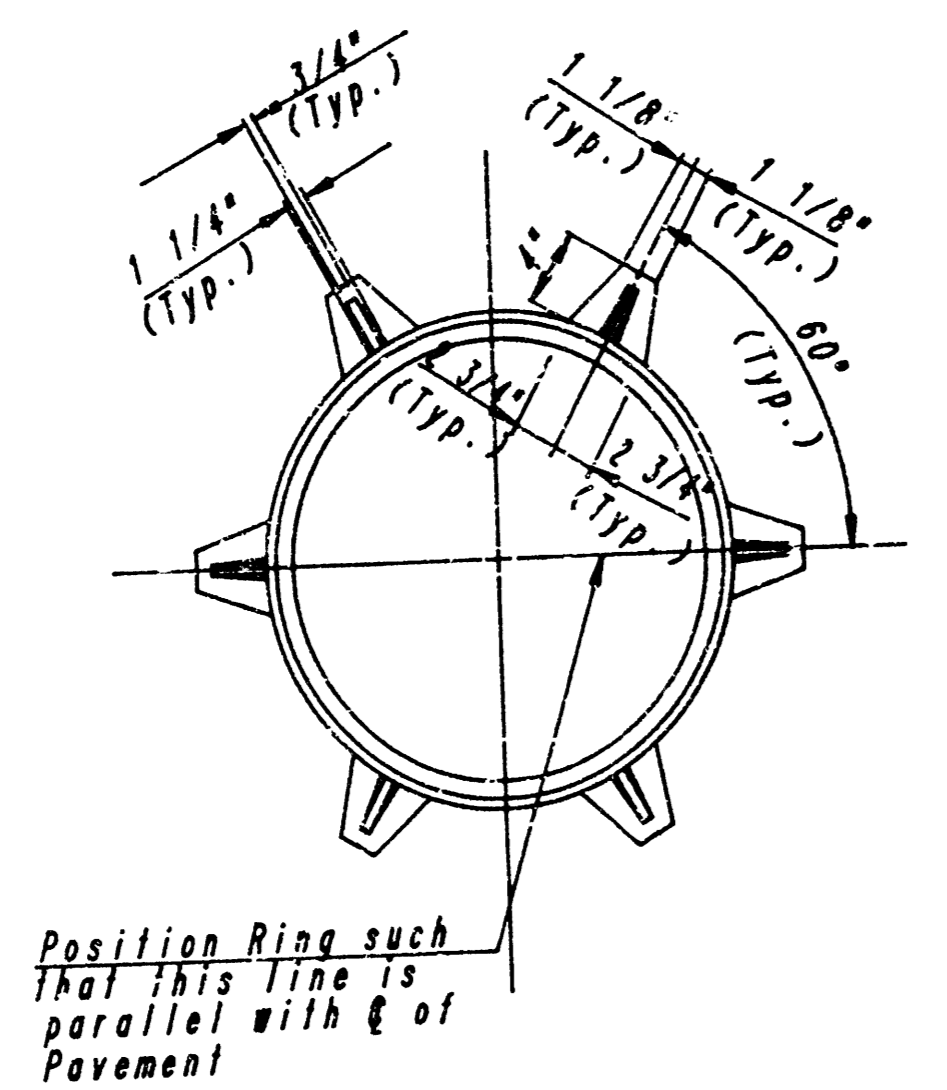
AS BUILT
 9-15-86
 GREENE

CITY OF WICHITA, KANSAS
 MICHAEL E. LINCKEBAK P.E., CITY ENGINEER
 TIMBROOK SRD. ADDITION
 STORM WATER SEWER NO. 300
 C.O.N. Proj. No. 468-76-2-45-8-1511-000-003-001

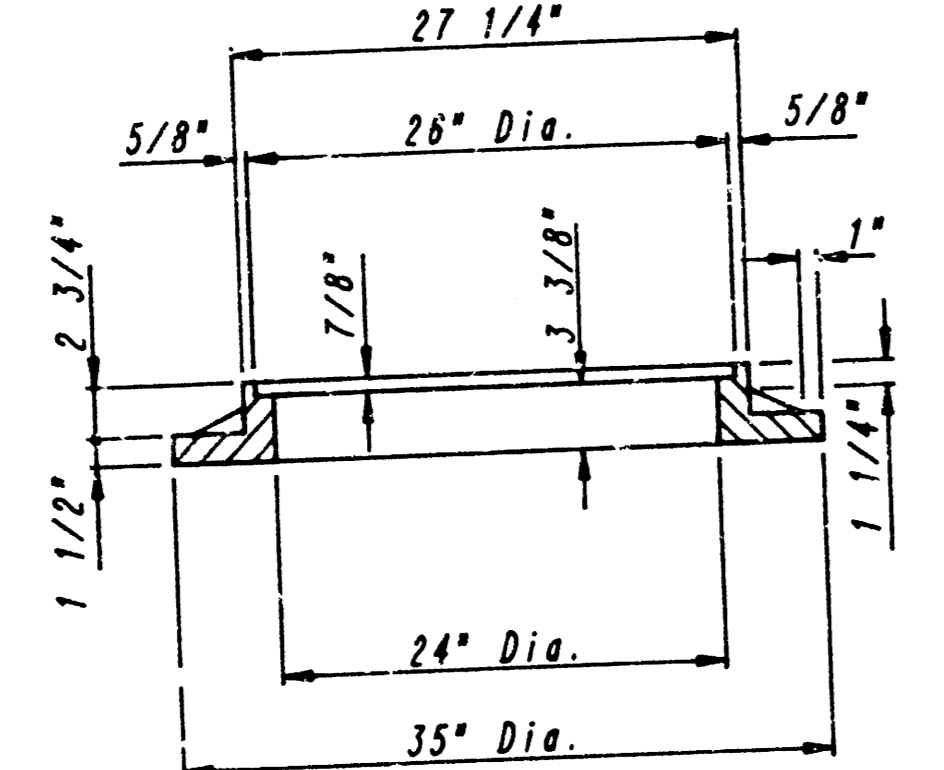
PROFESSIONAL ENGINEERING CONSULTANTS, P.A.
 WICHITA, KANSAS
 ENGINEER
 Job No. 34-86130
 Drawn By: KLR Date: March, 1986

Sheet 2 of 2

FILMED FROM THE BEST AVAILABLE COPY

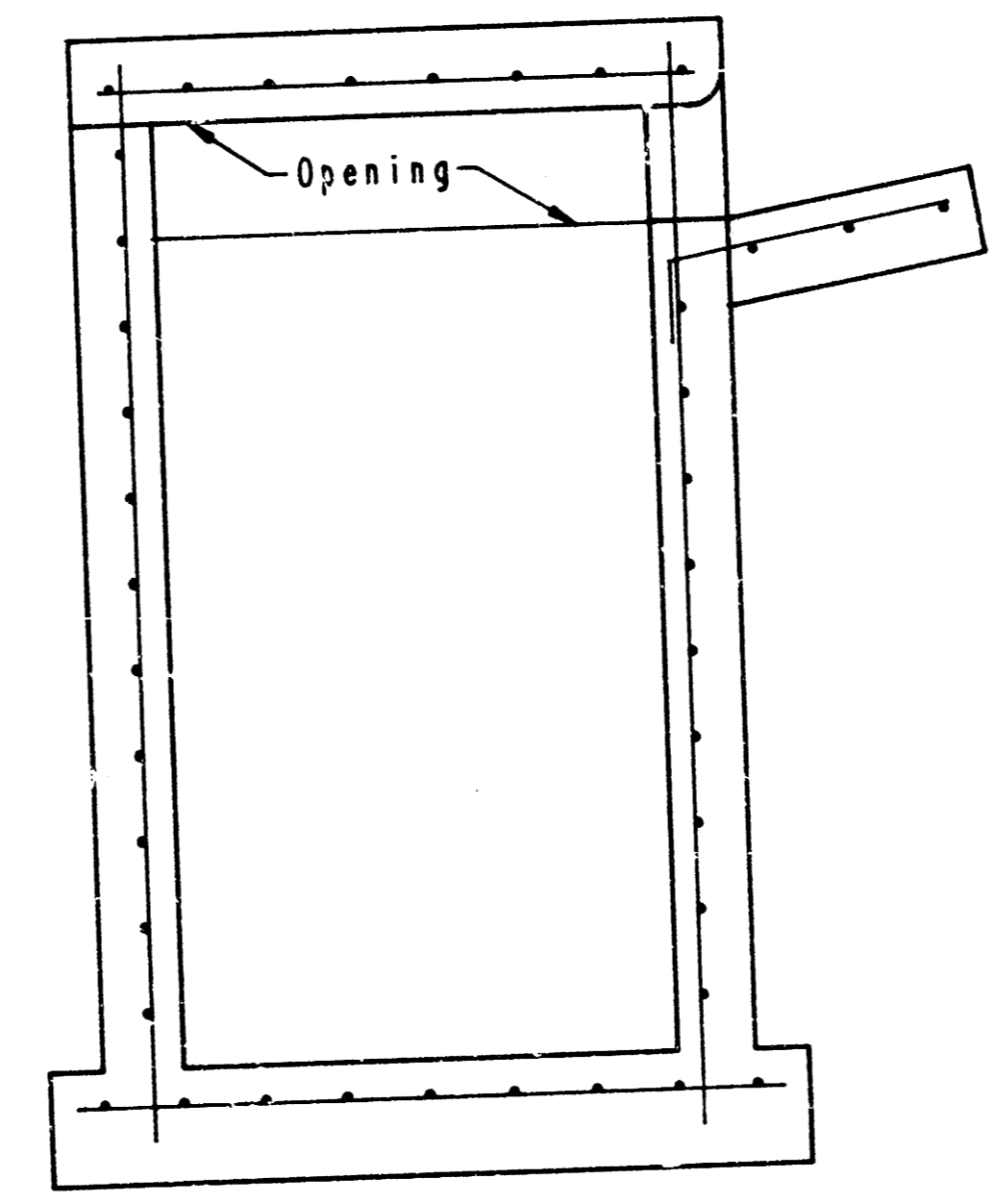
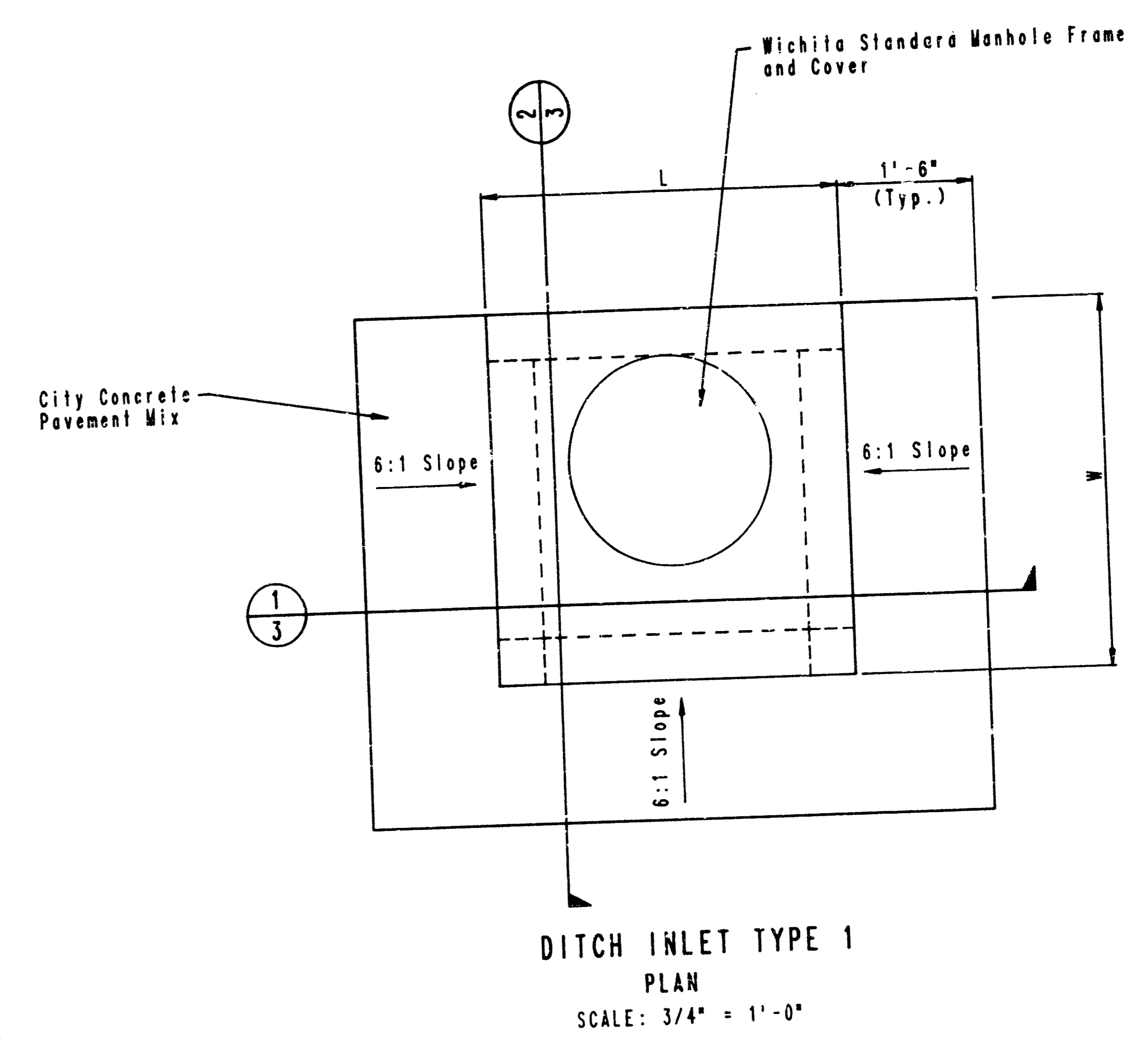


Position Ring such that this line is parallel with ϕ of Pavement

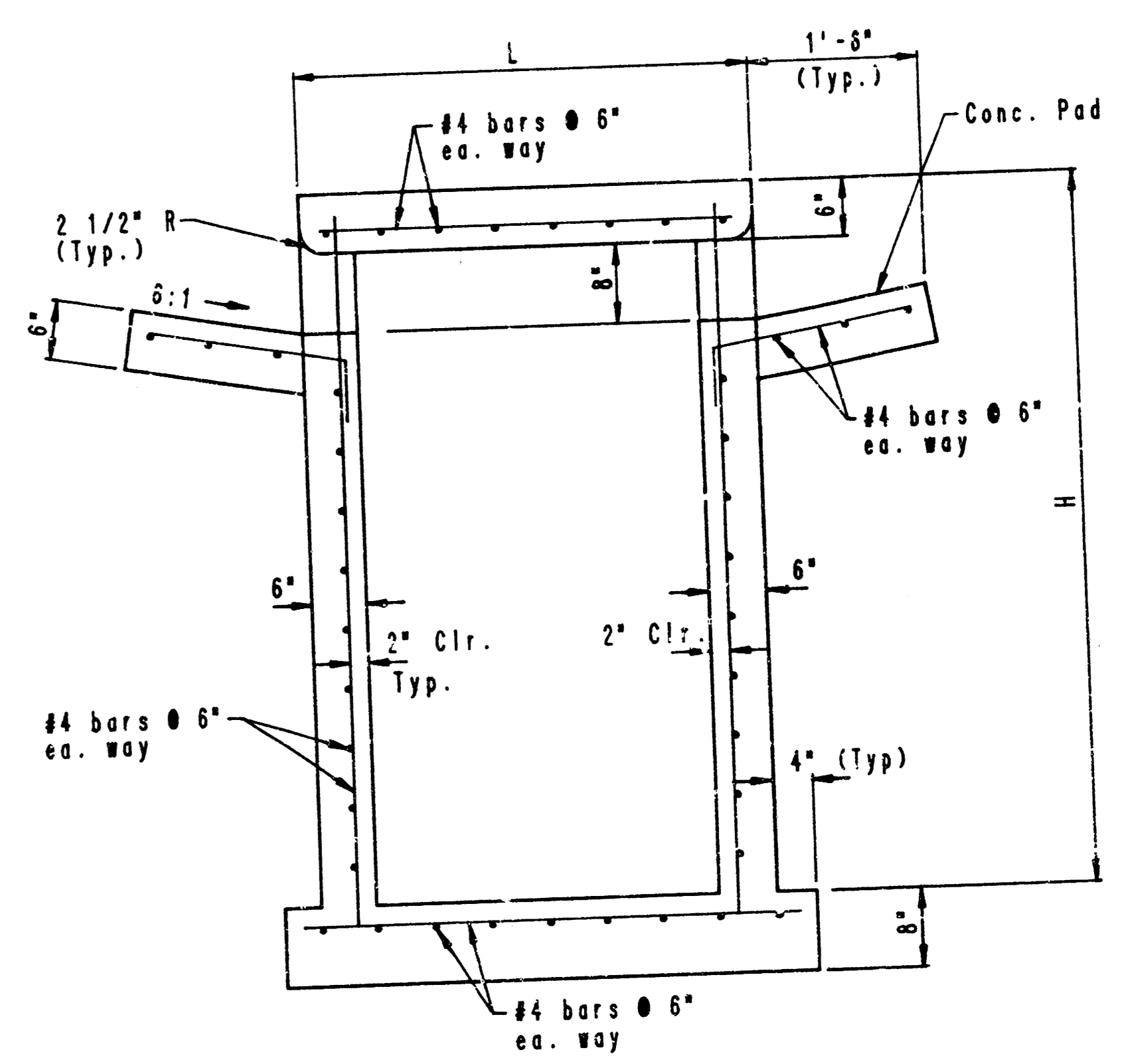


CAST IRON INLET FRAME
Wt. = 180 lbs.

See City of Wichita Standard Manhole Frame and Cover Detail Sheet for Cover Details to be used with Inlet Frame.



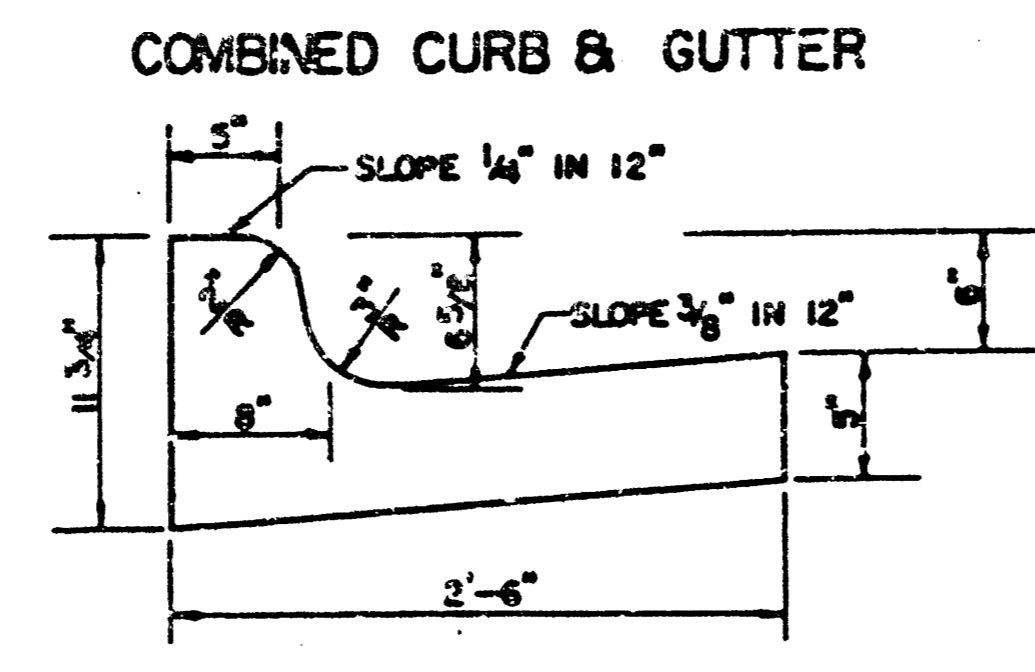
2 SECTION
3 SCALE: 3/4" = 1'-0"



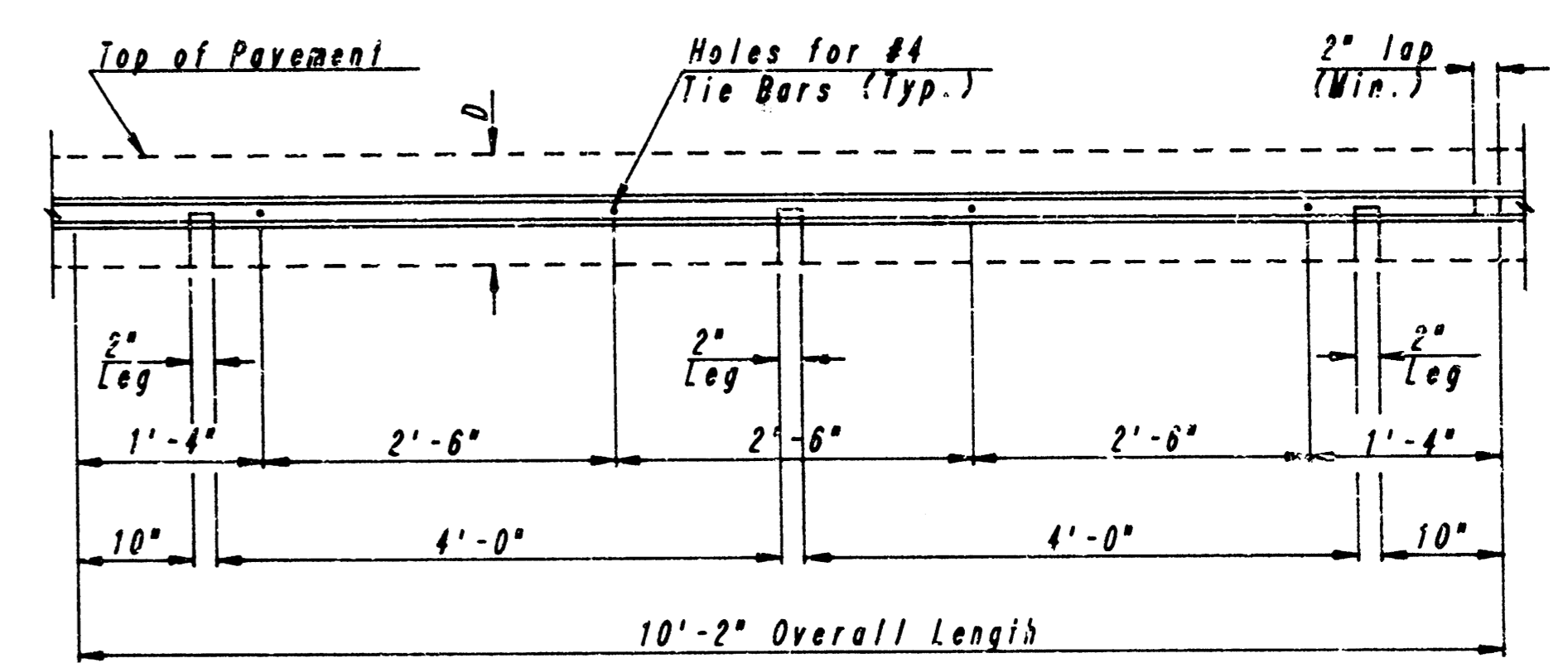
	Revision	By	Date
	CITY OF WICHITA, KANSAS MICHAEL E. LINDEKAN P.E., CITY ENGINEER DITCH INLET DETAIL TILBROOK 3RD ADDITION C. OF W PROJ. NO. 468-78-245-81511-000-000-001		
	PROFESSIONAL ENGINEERING CONSULTANTS, P.A. ENGINEERS WICHITA, KANSAS		
	Designed by KLR Drawn by CAL	Job No. 34-86130 Date April, 1988	3/5 Sht. 3 of 5

FILMED FROM THE BEST AVAILABLE COPY

PROJECT NO. 488-76-245-81511-000-001	SHEET NO. 5	TOTAL SHEETS 5
---	----------------	-------------------

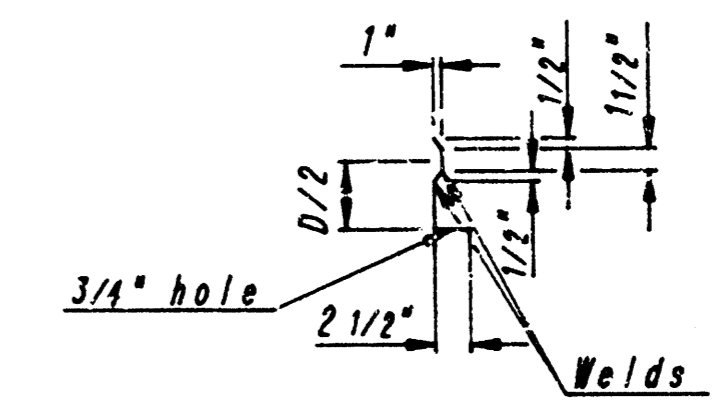


COMBINED CURB & GUTTER



TO BE USED ONLY AGAINST FORMS
SHALL NOT EXTEND THRU CONTRACTION JOINTS

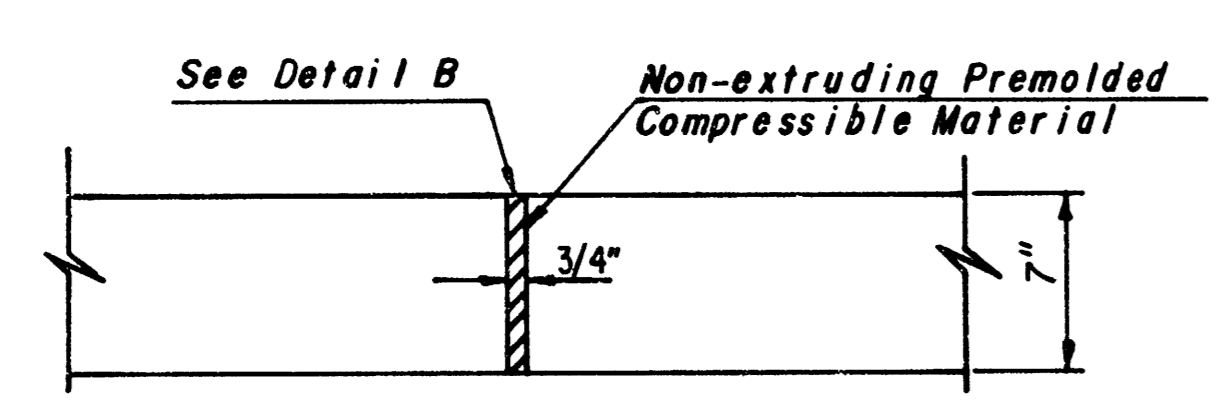
METAL STRIP FOR
LONGITUDINAL CONSTRUCTION JOINT



NOTE: SNAP-IN LEG OR OTHER APPROVED
DESIGNS MAY BE USED IN LIEU
OF WELDED LEG.

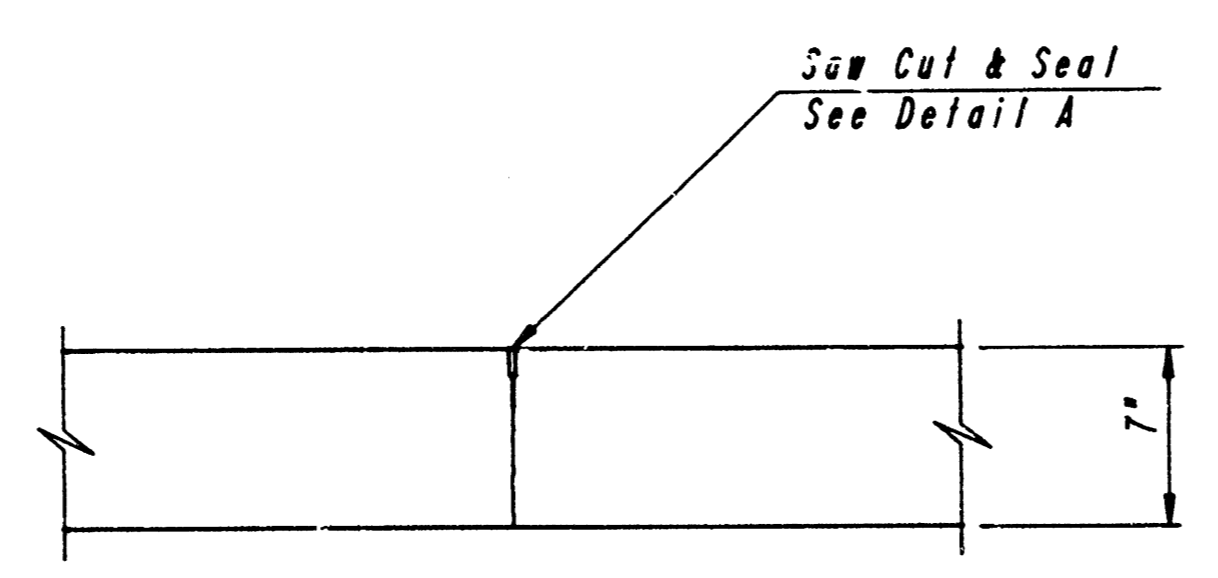
SECTION OF RECESSED
FORM LEG

METAL KEYWAY DETAILS

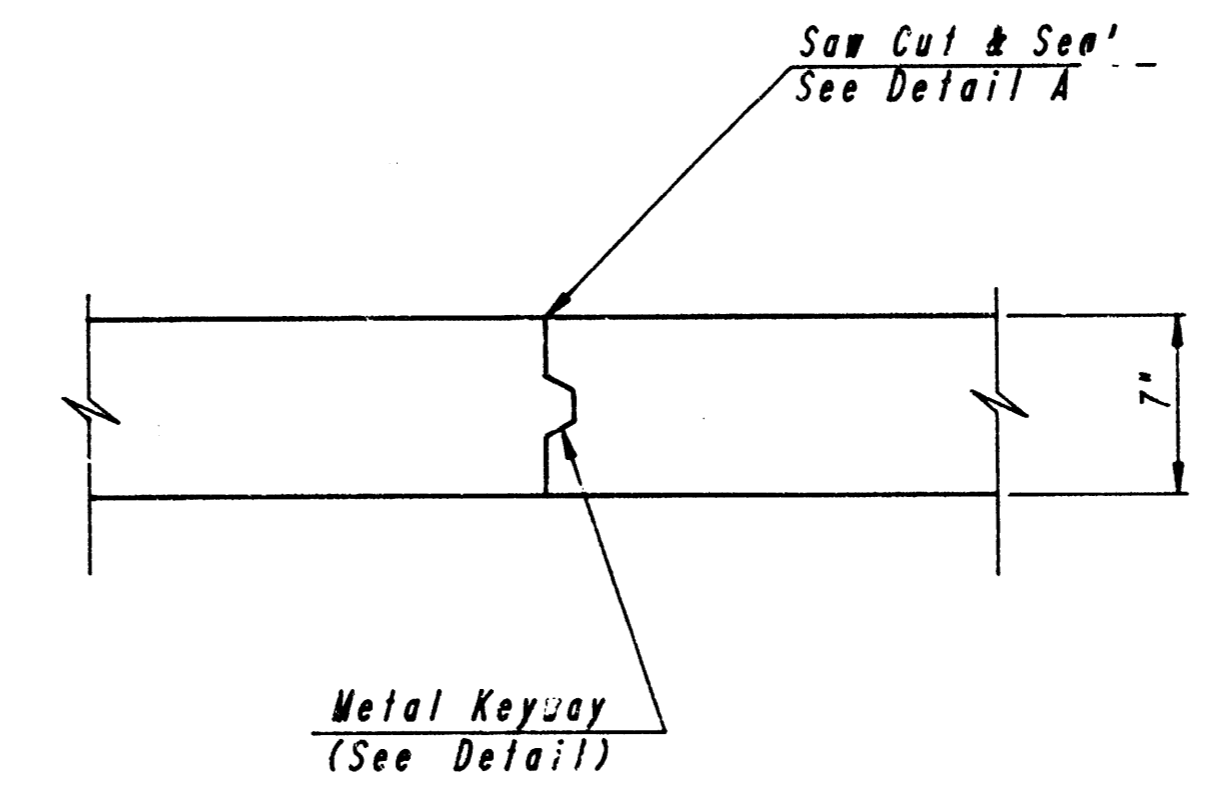


EXPANSION JOINT DETAIL
UNREINFORCED PAVEMENT
(E.J.)

EXPANSION JOINT MATERIAL SHALL EXTEND THROUGH COMBINED
CURB & GUTTER SECTIONS.

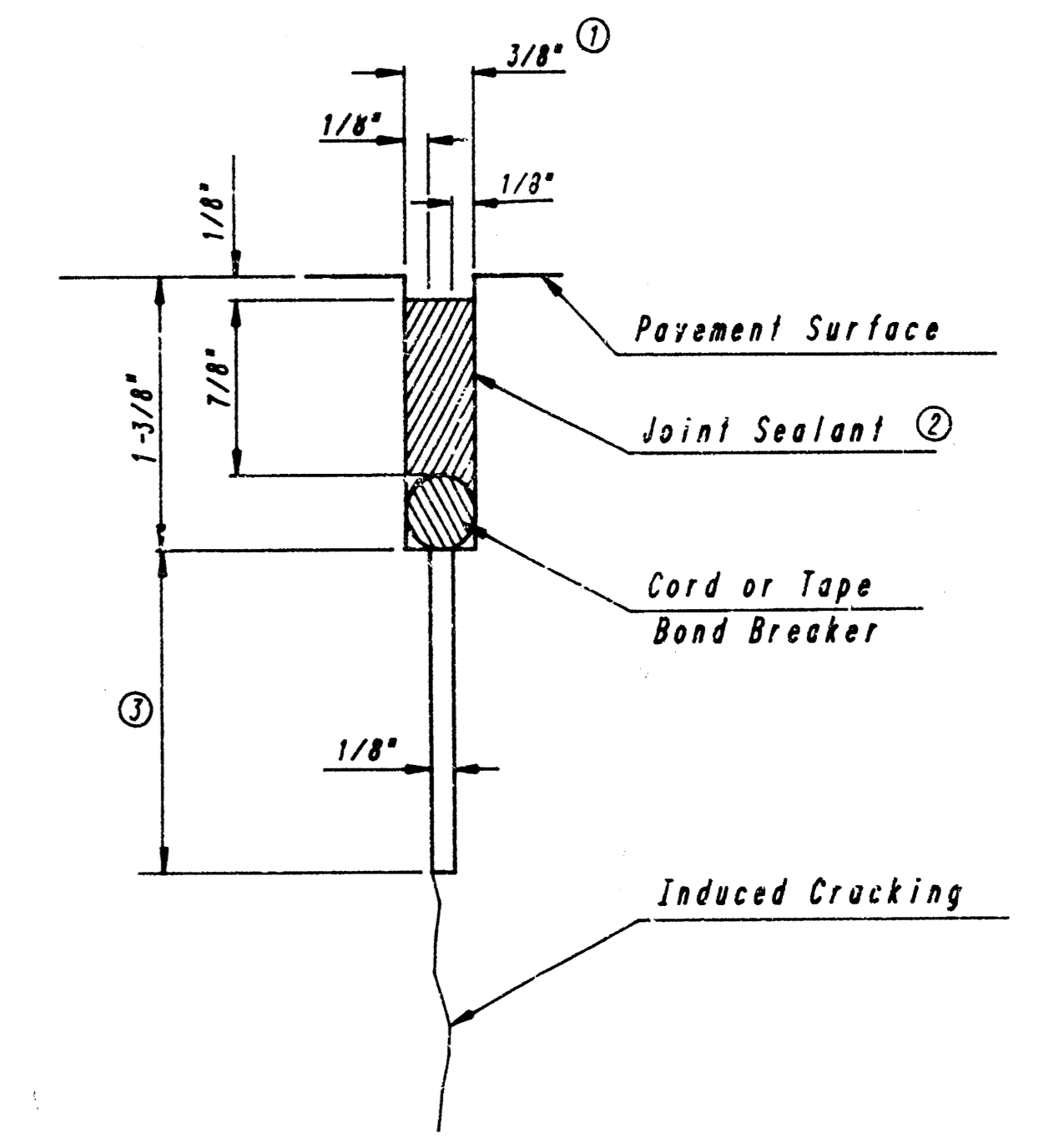


CONTRACTION JOINT DETAIL
(TRANSVERSE SECTION)
(C.J.)

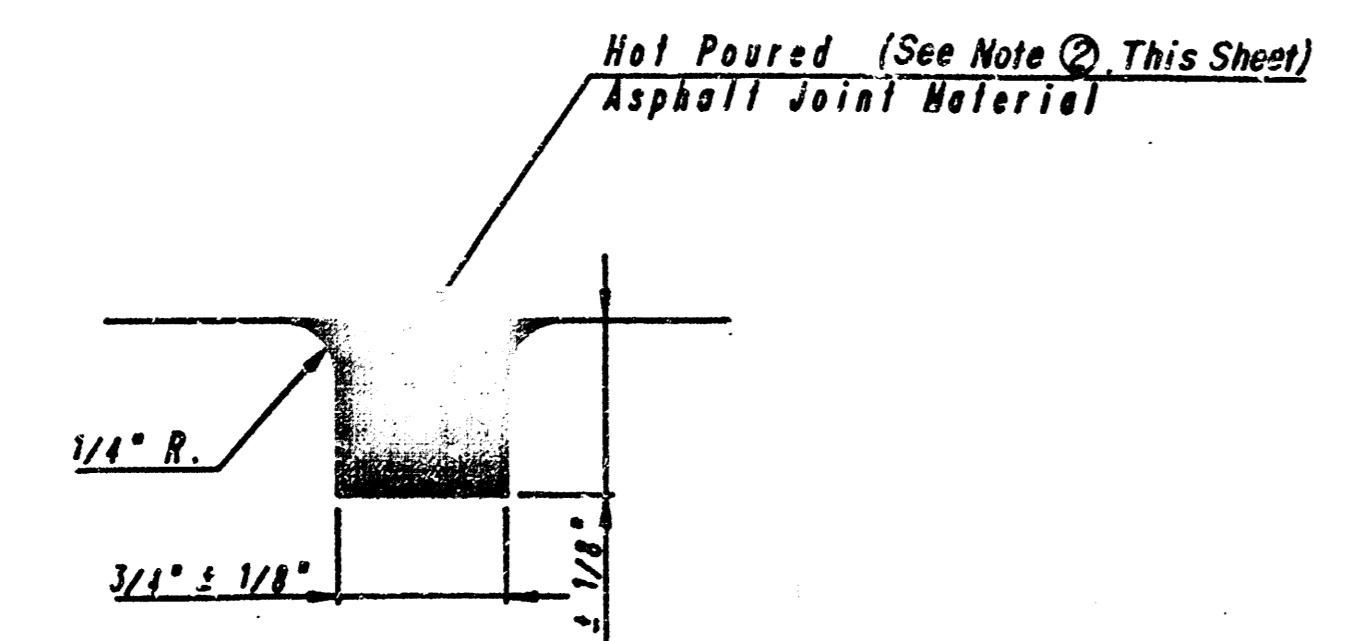


CONSTRUCTION JOINT DETAIL
(TRANSVERSE SECTION)

Construction joints shall only be used at
contraction joint locations at the contractors
option.

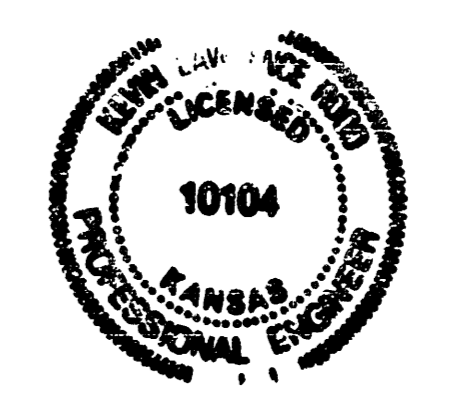


DETAIL A



DETAIL B

- ① To be accomplished in 2 cuts.
Initial cut to be 1/8" wide.
- ② Hot Poured Joint Sealant shall comply to
ASTM D-3569 or ASTM D-1190.
- ③ Eliminate bottom of cut when metal
keyway is used.

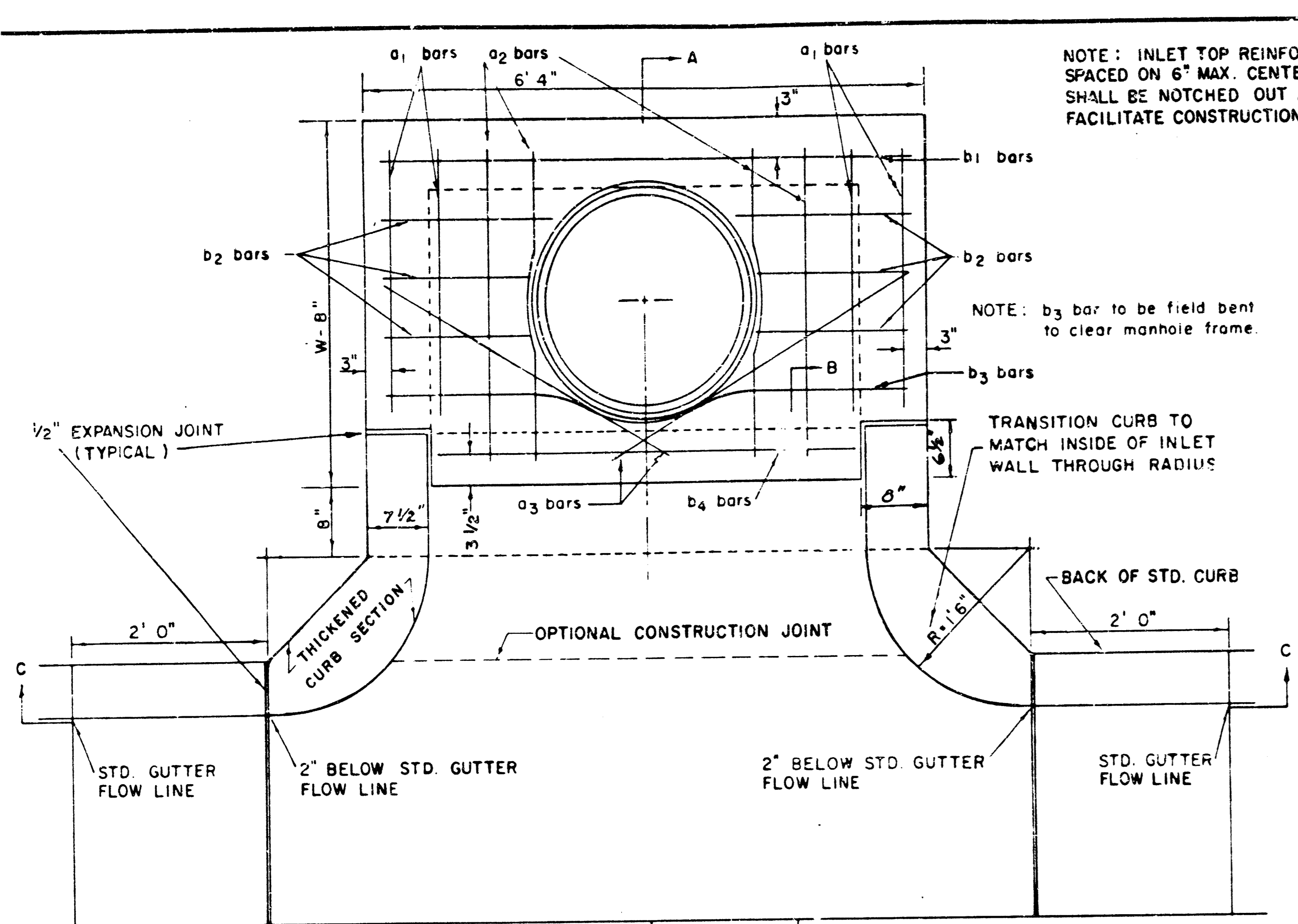


CONCRETE PAVING DETAILS
7" PLAIN CONCRETE PAVEMENT

PROFESSIONAL ENGINEERING CONSULTANTS, P.A.
ENGINEERS
WICHITA, KANSAS

Designed by	Checked by	Date	Job No.
			5

FILMED FROM THE BEST
AVAILABLE COPY



PLAN

STEEL SCHEDULE

BAR	a ₁	a ₂	a ₃	b				b ₂	b ₃	b ₄	WT. LBS.	
NUMBER	4	4	2	1	3	5	7	9	6	1	1	
SIZE	#4	#4	#4	#4	#4	#4	#4	#4	#4	#6		
W=4'4"	5'7"	6'7"	4'0"	6'1"	-	-	-	-	1'9"	6'2"	4'8"	60±
W=5'4"	7'7"	8'7"	5'0"	-	6'1"	-	-	-	1'9"	6'2"	4'8"	81±
W=6'4"	9'7"	10'7"	6'0"	-	6'1"	-	-	-	1'9"	6'2"	4'8"	101±
W=7'4"	11'7"	12'7"	7'0"	-	6'1"	-	-	-	1'9"	6'2"	4'8"	121±
W=8'4"	13'7"	14'7"	8'0"	-	6'1"	-	-	-	1'9"	6'2"	4'8"	141±

* NOTE: a₃ BARS TO BE PLACED APPROX. 2" BELOW TOP OF INLET COVER

BENDING DIAGRAM

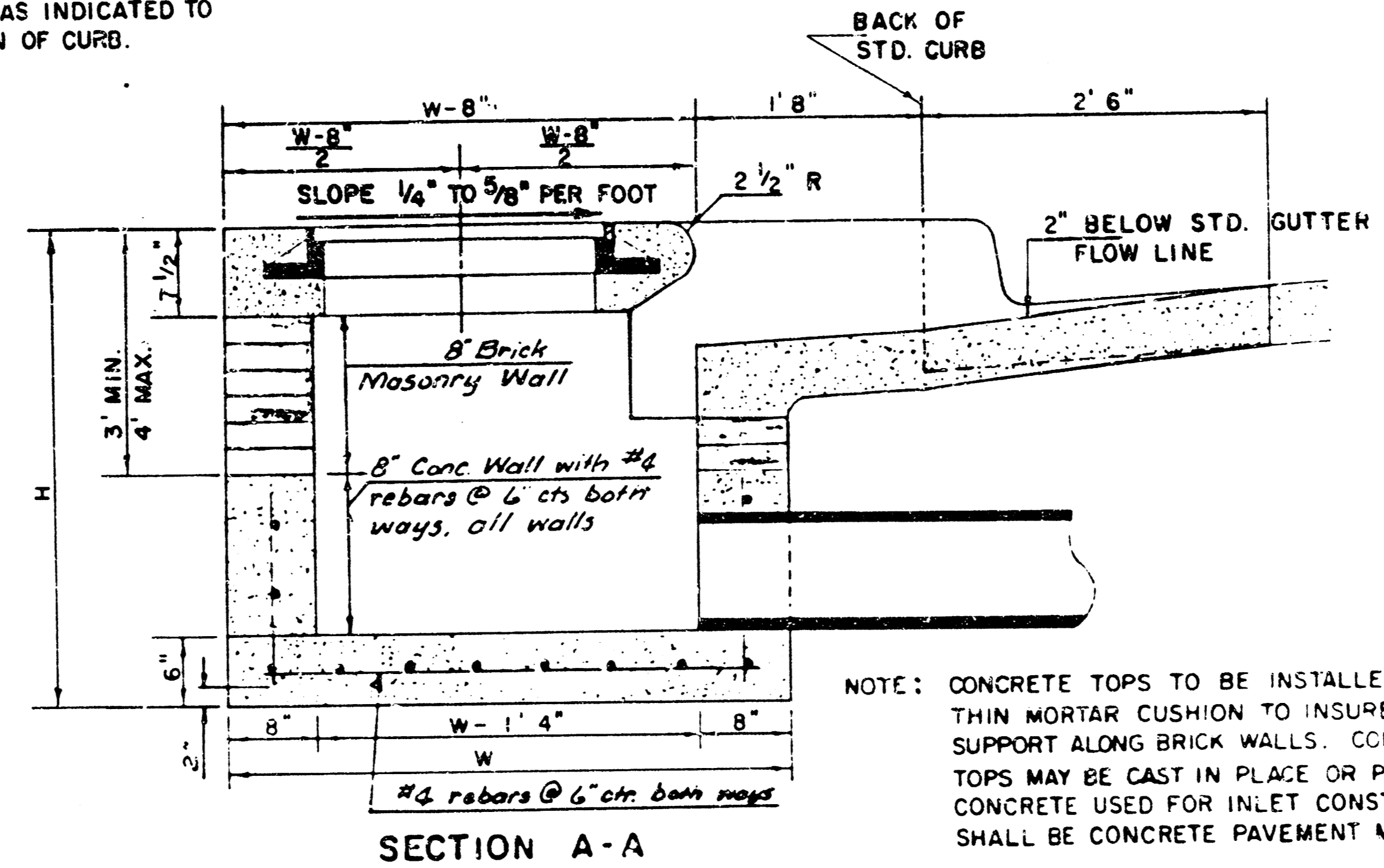
STANDARD CURB INLET PRECAST TOPS

W	PRE-CAST TOP SIZE	PIPE SIZE	CU. YD. CONC.
4' 4"	3'8" x 6'4" x 7 1/2"	21" B SMALLER	0.38 ±
5' 4"	4'8" x 6'4" x 7 1/2"	24" B 30"	0.51 ±
6' 4"	5'8" x 6'4" x 7 1/2"	36" B 42"	0.64 ±
7' 4"	6'8" x 6'4" x 7 1/2"	48" B 54"	0.77 ±
8' 4"	7'8" x 6'4" x 7 1/2"	60" B 66"	0.90 ±

NOTE: INLET TOP REINFORCING SHALL BE SPACED ON 6" MAX. CENTERS. INLET LIDS SHALL BE NOTCHED OUT AS INDICATED TO FACILITATE CONSTRUCTION OF CURB.

NOTE: b₃ bar to be field bent to clear manhole frame.

TRANSITION CURB TO MATCH INSIDE OF INLET WALL THROUGH RADIUS



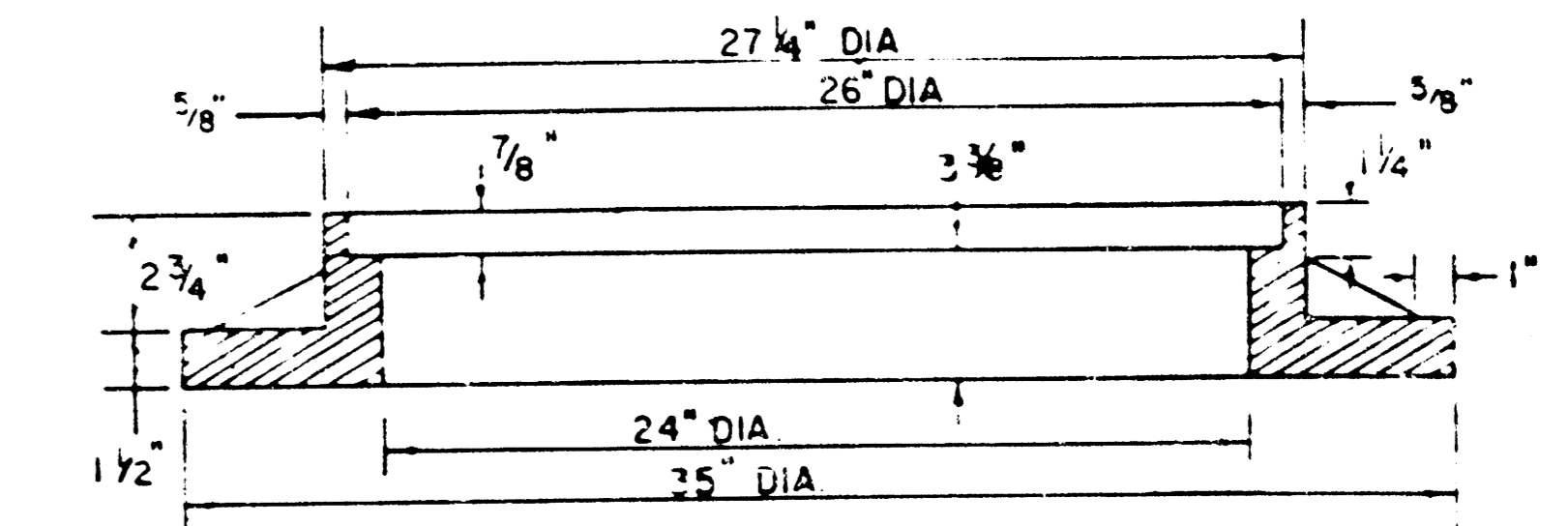
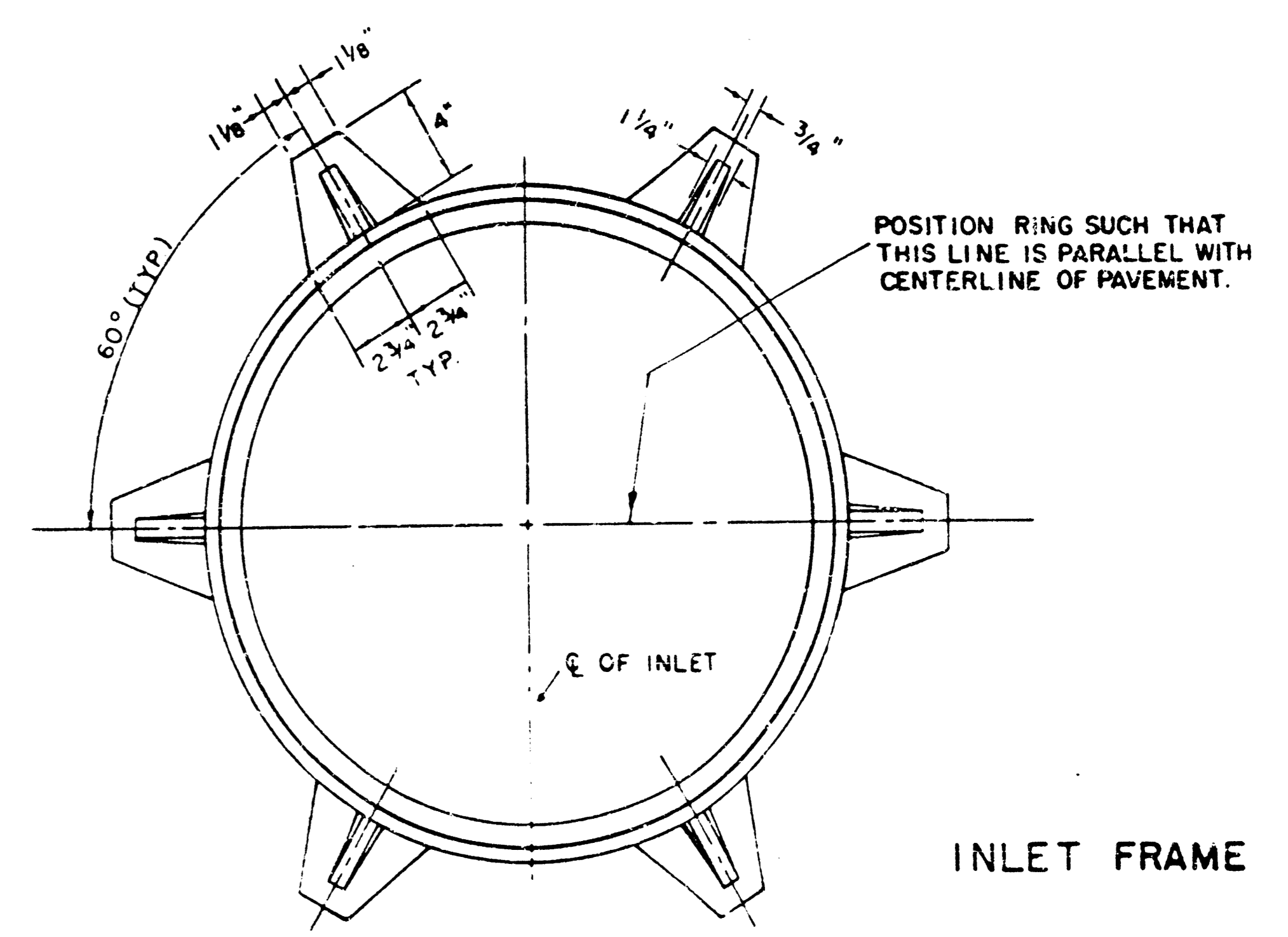
SECTION A-A

NOTE: CONTRACTOR SHALL HAVE THE OPTION OF CONSTRUCTING 8" BRICK MASONRY WALLS BETWEEN THE CONCRETE INLET BASE AND TOP ON THIS INLET WHEN W = 6'4" AND H = 7'0" OR LESS.

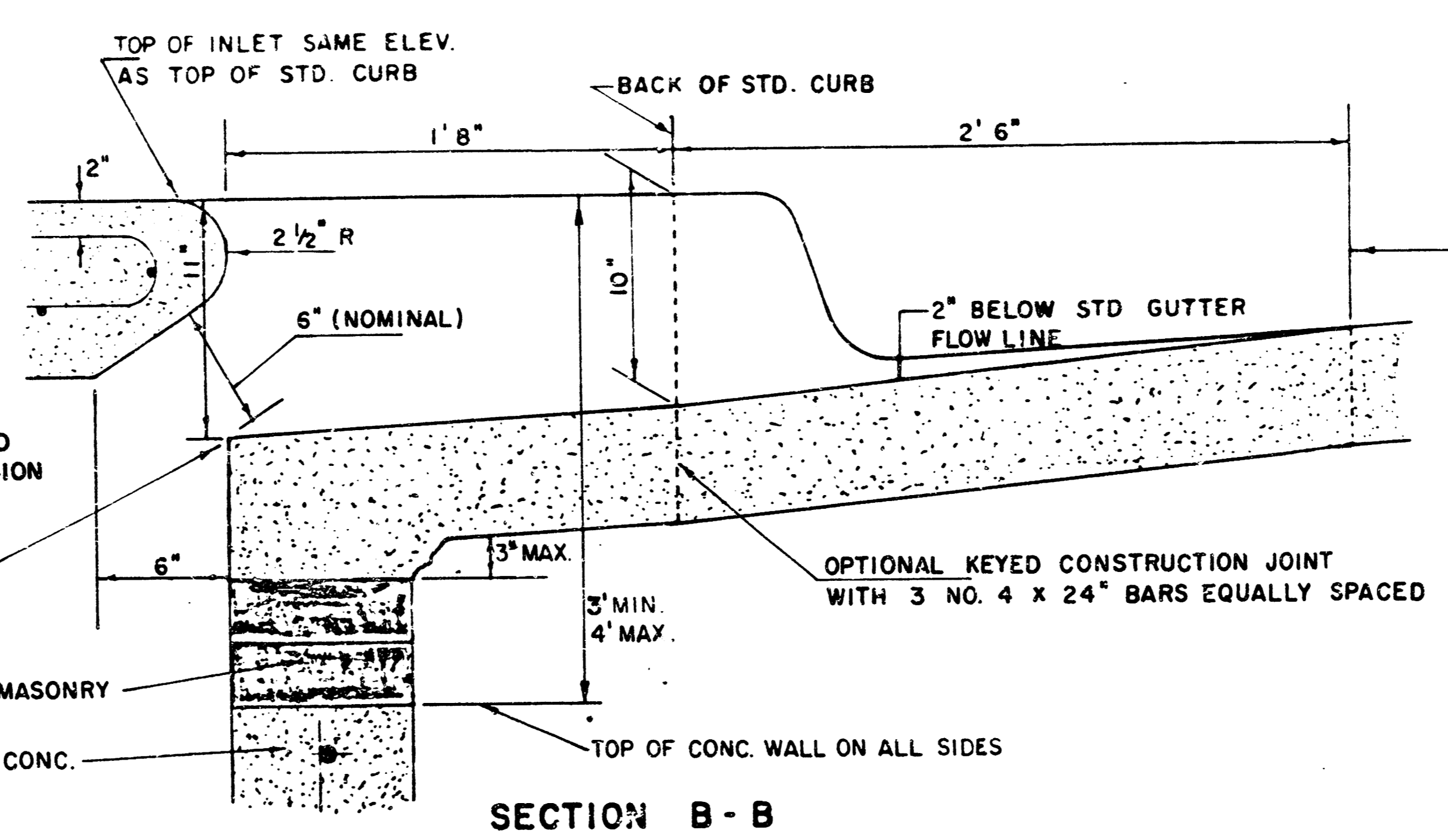
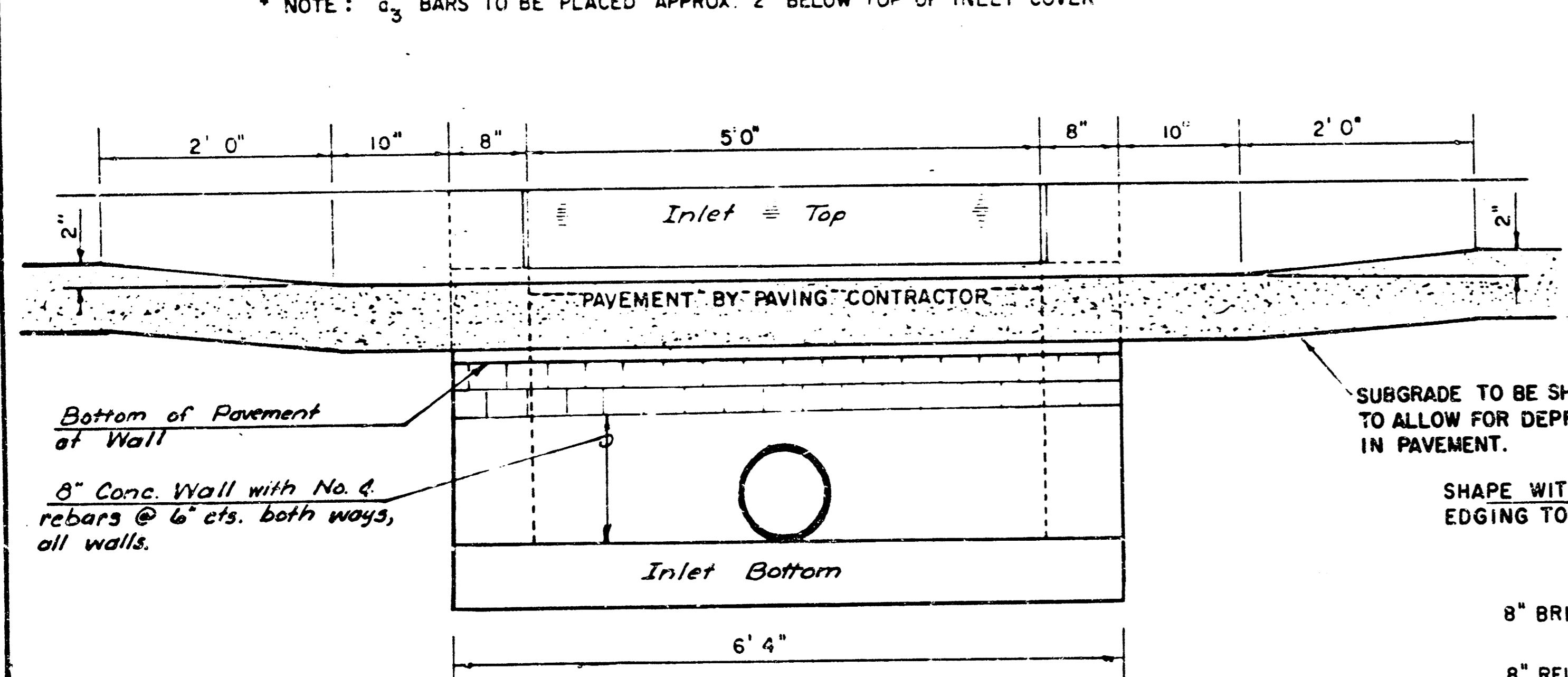
ADDITIONAL CURB AND GUTTER CONSTRUCTION NECESSARY TO CONNECT SET-BACK INLET TO PAVEMENT WILL BE PAID FOR AT THE UNIT PRICE BID FOR EACH INLET HOOKUP.

INLET INVERT SHALL BE SHAPED WITH 8 SACK SAND MIX CONCRETE TO CREATE FLOW CHANNELS AND TO INCREASE HYDRAULIC EFFICIENCY SUCH THAT THE INLET WILL BE SELF CLEANING BETWEEN ALL INLET AND/OR OUTLET PIPES.

THE ENDS OF ALL PIPES INSTALLED IN INLETS SHALL BE CUT OFF FLUSH WITH THE INSIDE FACE OF THE INLET WALL.



SEE CITY OF WICHITA STANDARD MANHOLE FRAME AND COVER DETAIL SHEET FOR COVER DETAILS TO BE USED WITH INLET FRAME.



REVISED 12-21-1984

DETAIL STANDARD TYPE IA CURB INLET
CITY OF WICHITA, KANSAS
INLET OPENING = 6" x 5' 0"

JUNE 3 1984

FILMED FROM THE BEST AVAILABLE COPY