

# STORM SEWER PLANS FOR NORTHROCK BUSINESS PARK PHASE 2

## S.W.S. NO. 322

## PROJECT NO.

### 468-76-245-81623-000-000-001

CITY OF WICHITA, KANSAS  
MICHAEL E. LINDEBAK, CITY ENGINEER

#### GENERAL NOTES

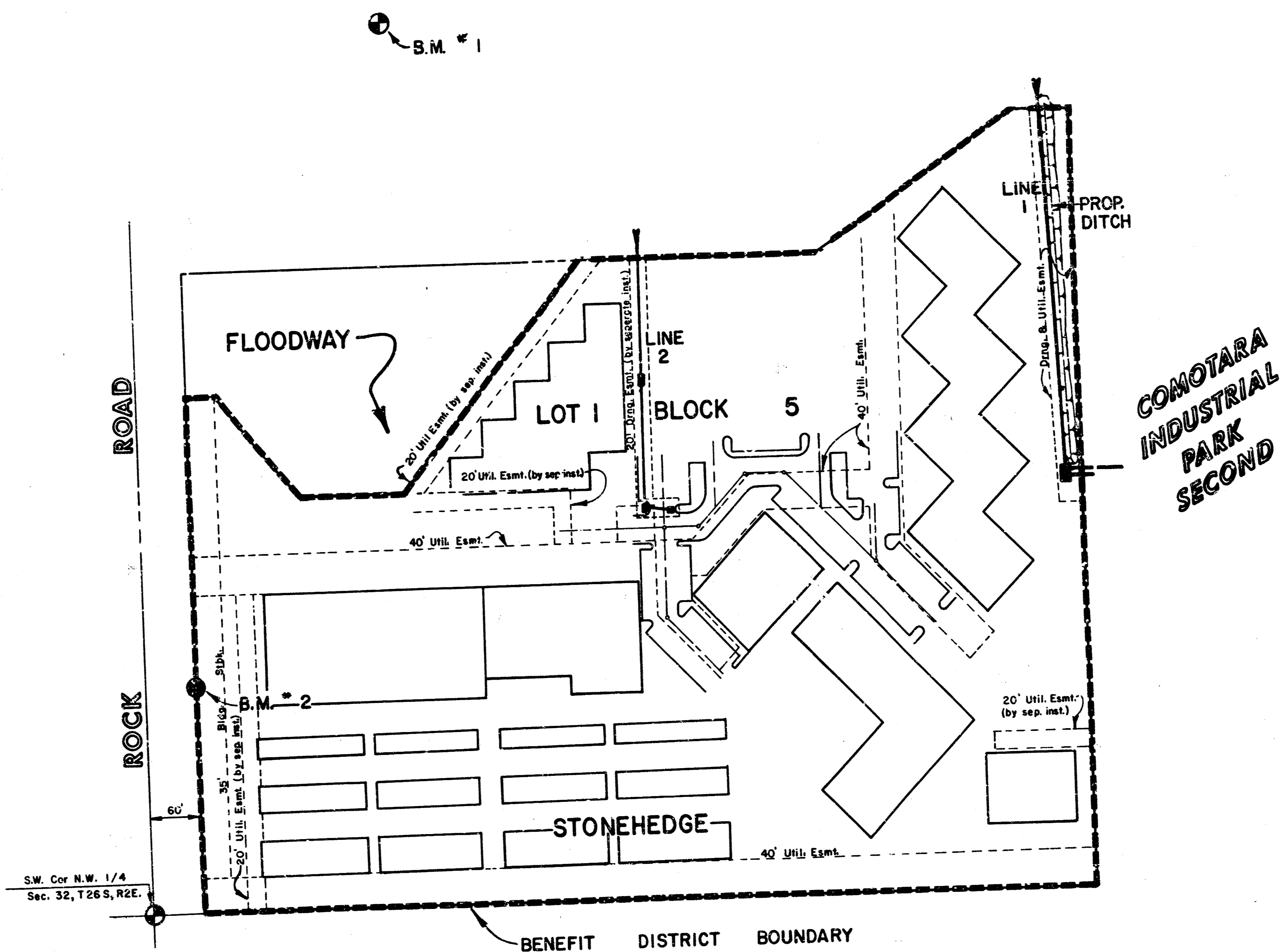
1. ALL CONCRETE SHALL BE STANDARD PAVING MIX UNLESS OTHERWISE NOTED.
2. THE CONTRACTOR SHALL BE RESPONSIBLE FOR PRESERVING PROPERTY IRONS. THE CONTRACTOR SHALL BE REQUIRED TO RE-ESTABLISH ANY PROPERTY IRONS WHICH ARE DAMAGED OR DESTROYED BY HIS CONSTRUCTION OPERATIONS. SUCH IRONS SHALL BE RE-ESTABLISHED BY A LICENSED LAND SURVEYOR OR A LICENSED PROFESSIONAL ENGINEER IN ACCORDANCE WITH STATE LAWS.
3. TREES TO BE REMOVED ARE MARKED . ALL TREES WHICH IN THE OPINION OF THE FIELD ENGINEER CAN BE SAVED, SHALL BE SAVED.
4. CONTRACTOR SHALL NOTIFY THE UTILITY COMPANIES OF CONSTRUCTION SCHEDULING.
5. EXISTING UTILITIES AND THEIR LOCATIONS, AS SHOWN ON THE PLANS, REPRESENT THE BEST INFORMATION OBTAINABLE FOR DESIGN. LOCATION INFORMATION HAS BEEN OBTAINED FROM THE VARIOUS UTILITY COMPANIES AND IS EITHER FROM COMPANY RECORD DRAWINGS OR COMPANY PROVIDED FIELD LOCATIONS. THE PLAN LOCATIONS SHOWN ARE NOT GUARANTEED. ADDITIONAL EXISTING UTILITIES MAY ALSO BE ENCOUNTERED.

CONTRACTOR SHALL NOTIFY THE FOLLOWING COMPANIES PRIOR TO ANY EXCAVATION:

ARKLA GAS COMPANY	942-8350
BELL TELEPHONE	268-2256
CABLEVISION	269-3340
GAS SERVICE COMPANY	263-7511
KANSAS GAS & ELECTRIC	261-6375
KANSAS ONE-CALL	1-800-344-7233
CITIES SERVICE	524-0491
KANSAS GAS SUPPLY	1-316-254-7243
CONTINENTAL PIPELINE COMPANY	1-316-681-2081
CO-OP REFINERY PIPELINE	1-316-221-2107

#### BENCH MARKS

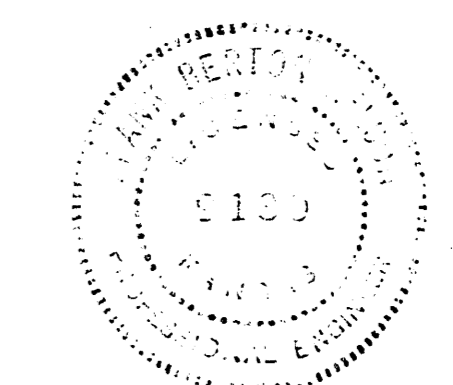
- B.M. #1 on Northeast side of driveway, Building #600, 3500 North Rock Road.  
Elev. = 204.46
- B.M. #2 cut on Northeast corner of concrete Driveway entrance to Storage Units. cut is 60' East and 246' North of the West 1/4 corner of Section 32, T 26 S, R 2 E.  
Elev. = 202.96



#### INDEX TO DRAWINGS

SHEET NO.	DESCRIPTION
1	TITLE SHEET
2	PLAN LINE 1
3	PLAN LINE 2
4	STD. DETAILS - REINF. CONC. MANHOLE
5	CURB INLET DETAILS
6	DROP INLET DETAILS
7	FINAL PLAT

*AS BUILT  
10/87  
MCGRENE  
W'S*

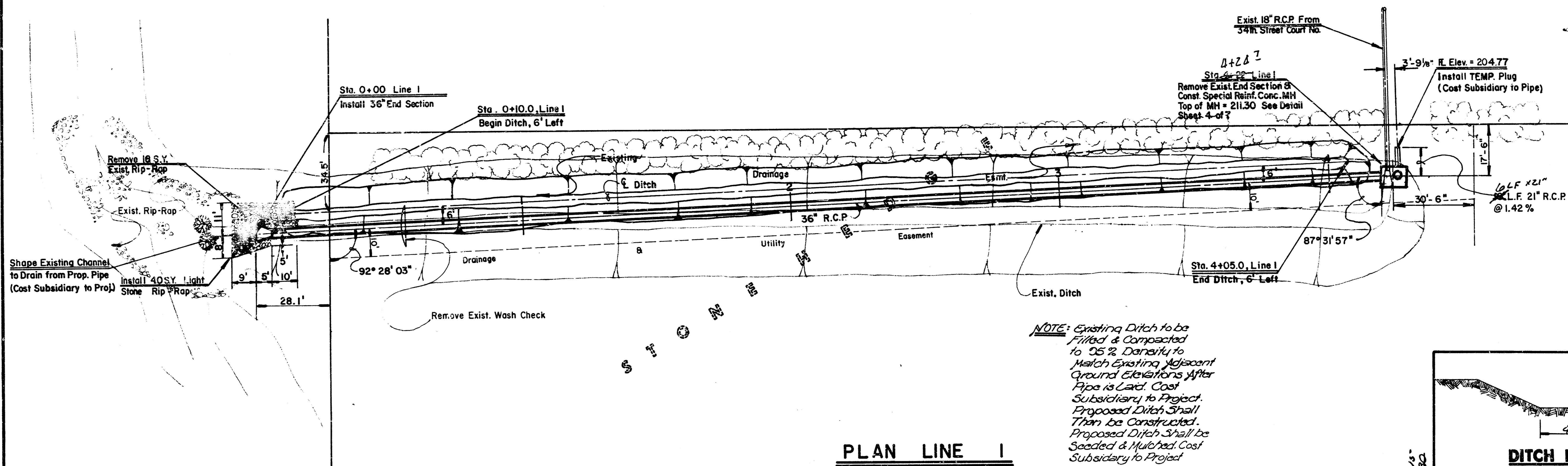


	<b>NORTHROCK BUSINESS PARK PHASE 2</b>	Design FBN
	<b>STORM WATER SEWER PLANS</b>	Drawn by DDG
MID-KANSAS ENGINEERING CONSULTANTS PA 3500 NORTH ROCK ROAD BUILDING #600 WICHITA, KANSAS 67226		Checked by Date JAN. 5, 1987
		Sheet 1 of 7

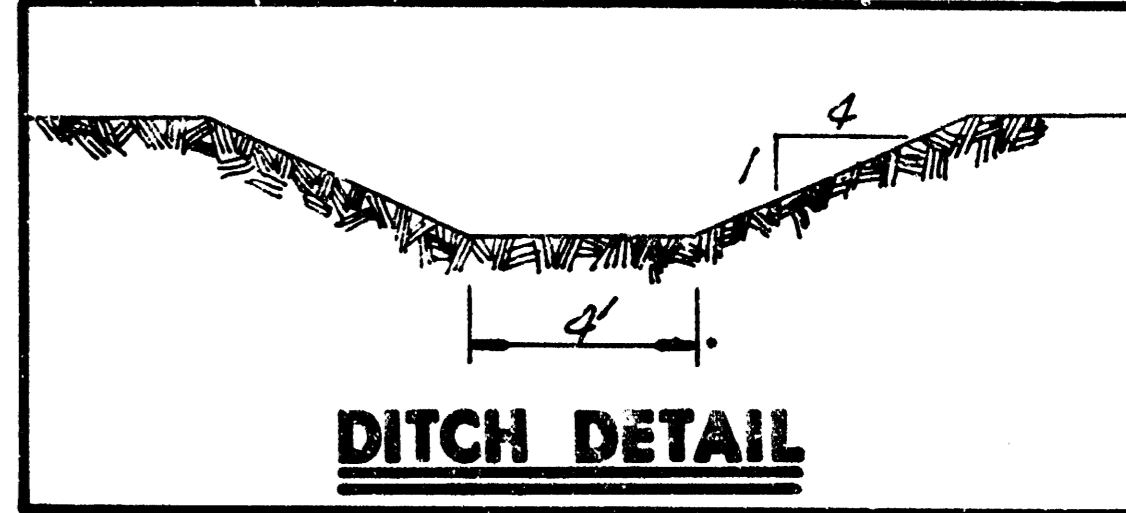
FILMED FROM THE BEST  
AVAILABLE COPY



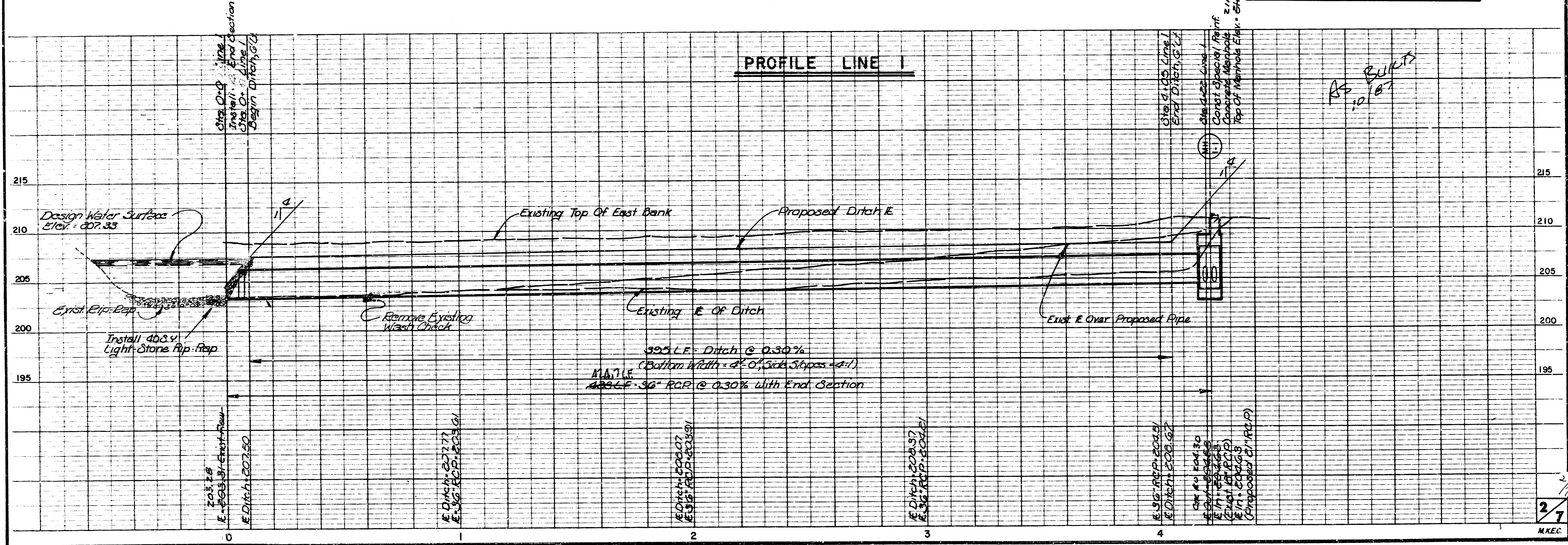
Scale: 1" = 20' Horiz.  
 1" = 5' Vert.



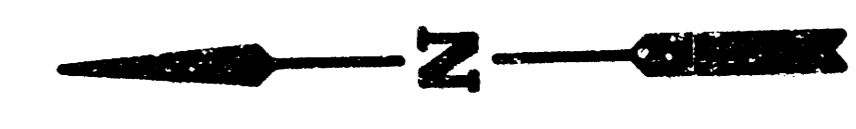
**NOTE:** Existing Ditch to be Filled & Compacted to 95% Density to Match Existing Adjacent Ground Elevations After Pipe is Laid. Cost Subsidiary to Project. Proposed Ditch Shall Then be Constructed. Proposed Ditch Shall be Seeded & Mulched. Cost Subsidiary to Project.



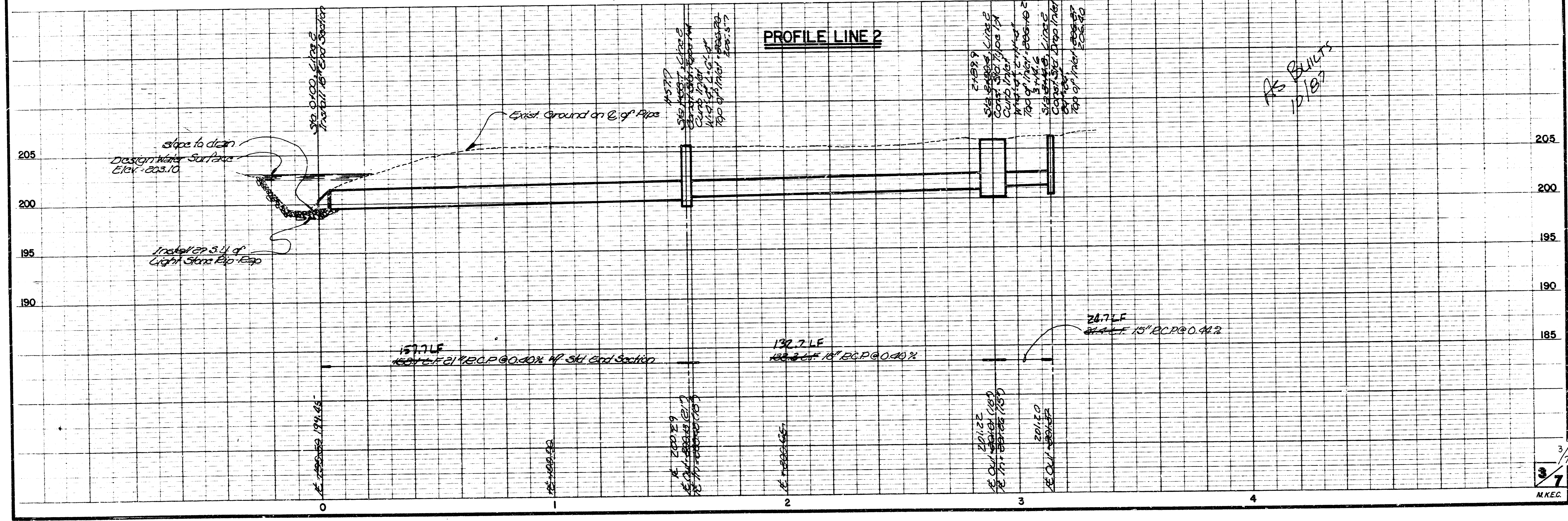
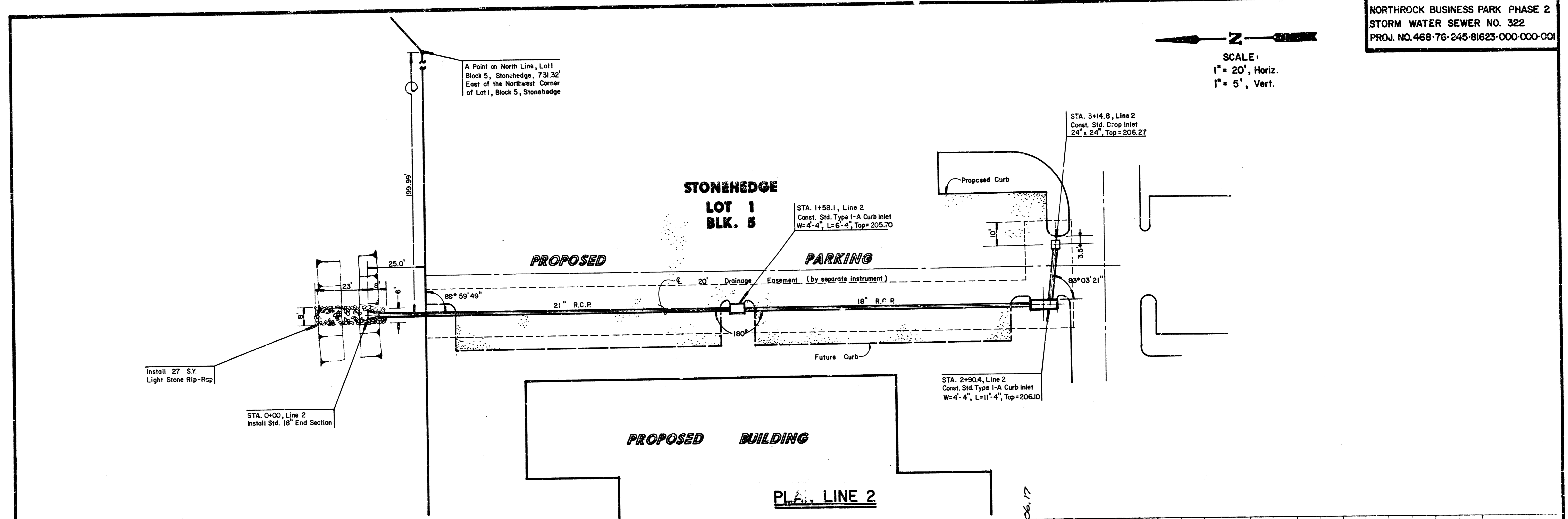
**PLAN LINE I**

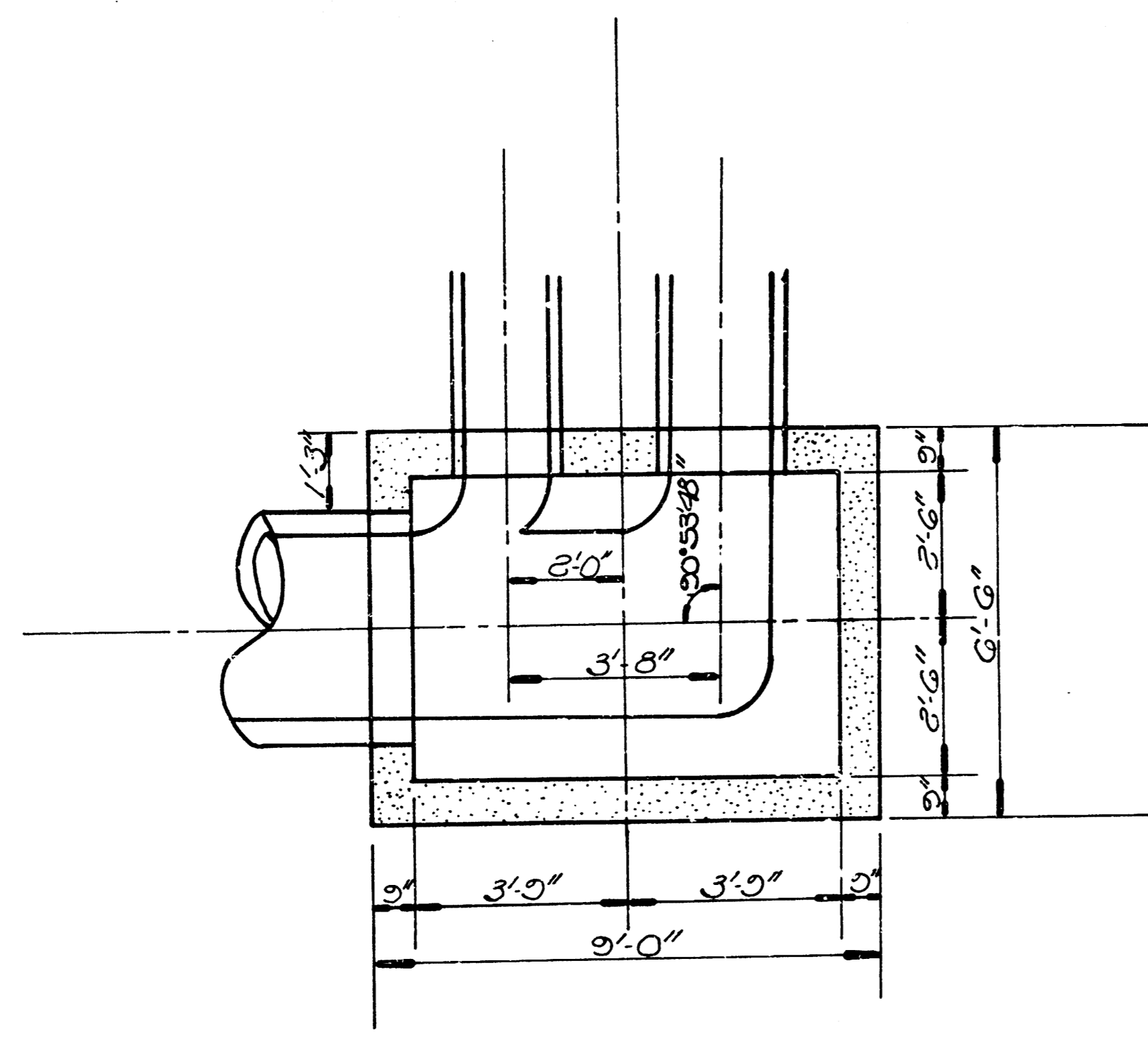


AS BURT  
 10/87

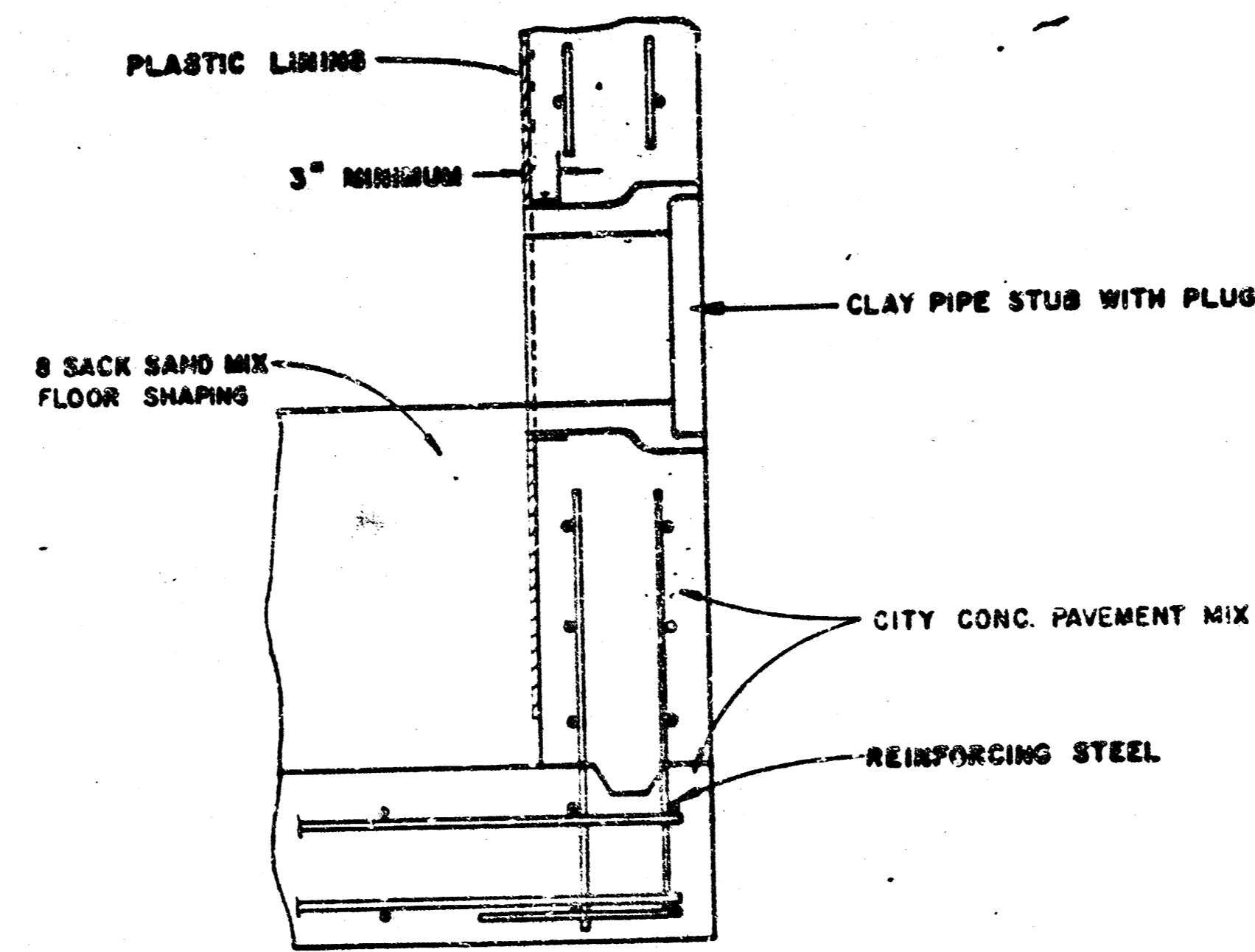


SCALE:  
 1" = 20', Horiz.  
 1" = 5', Vert.

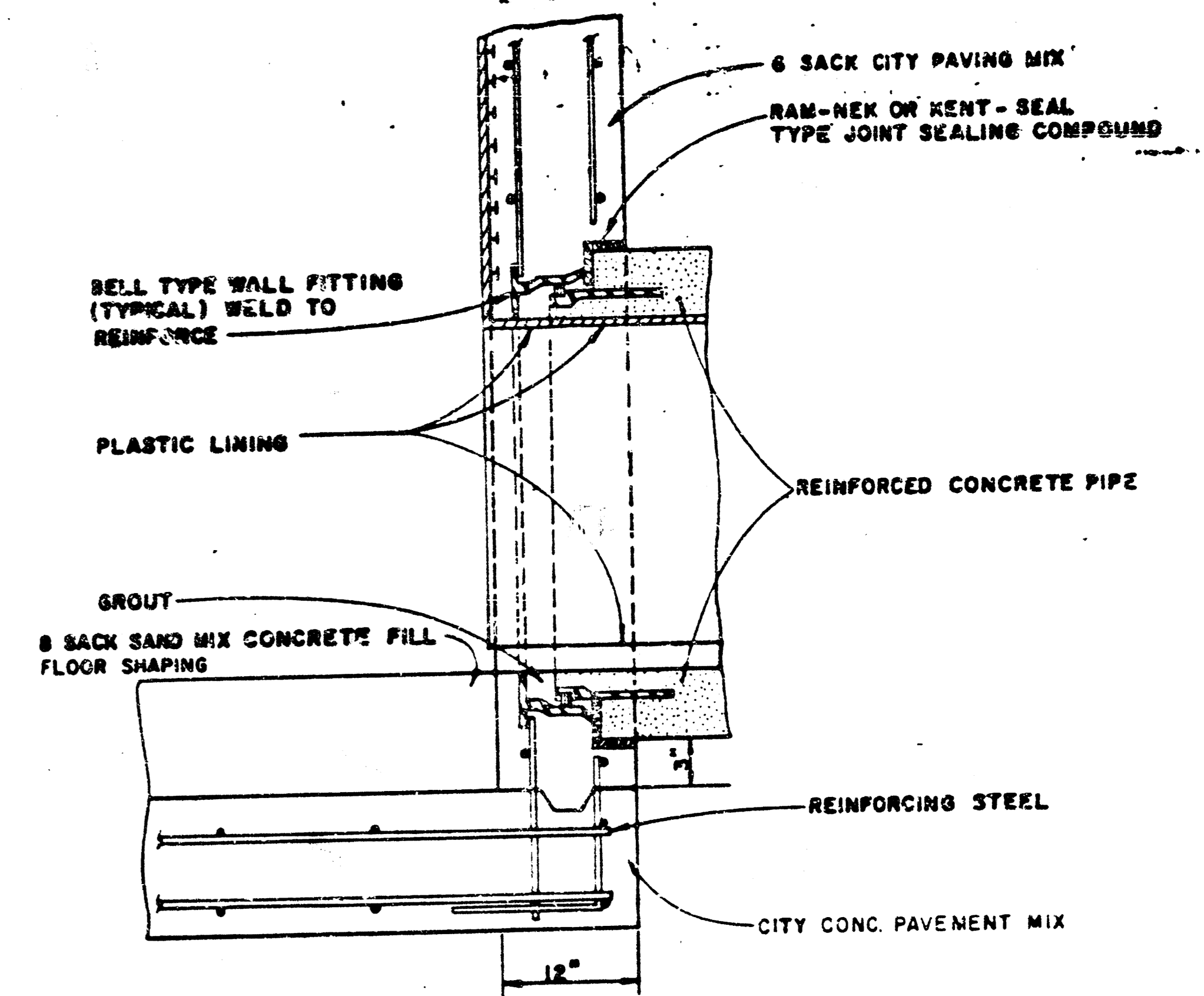




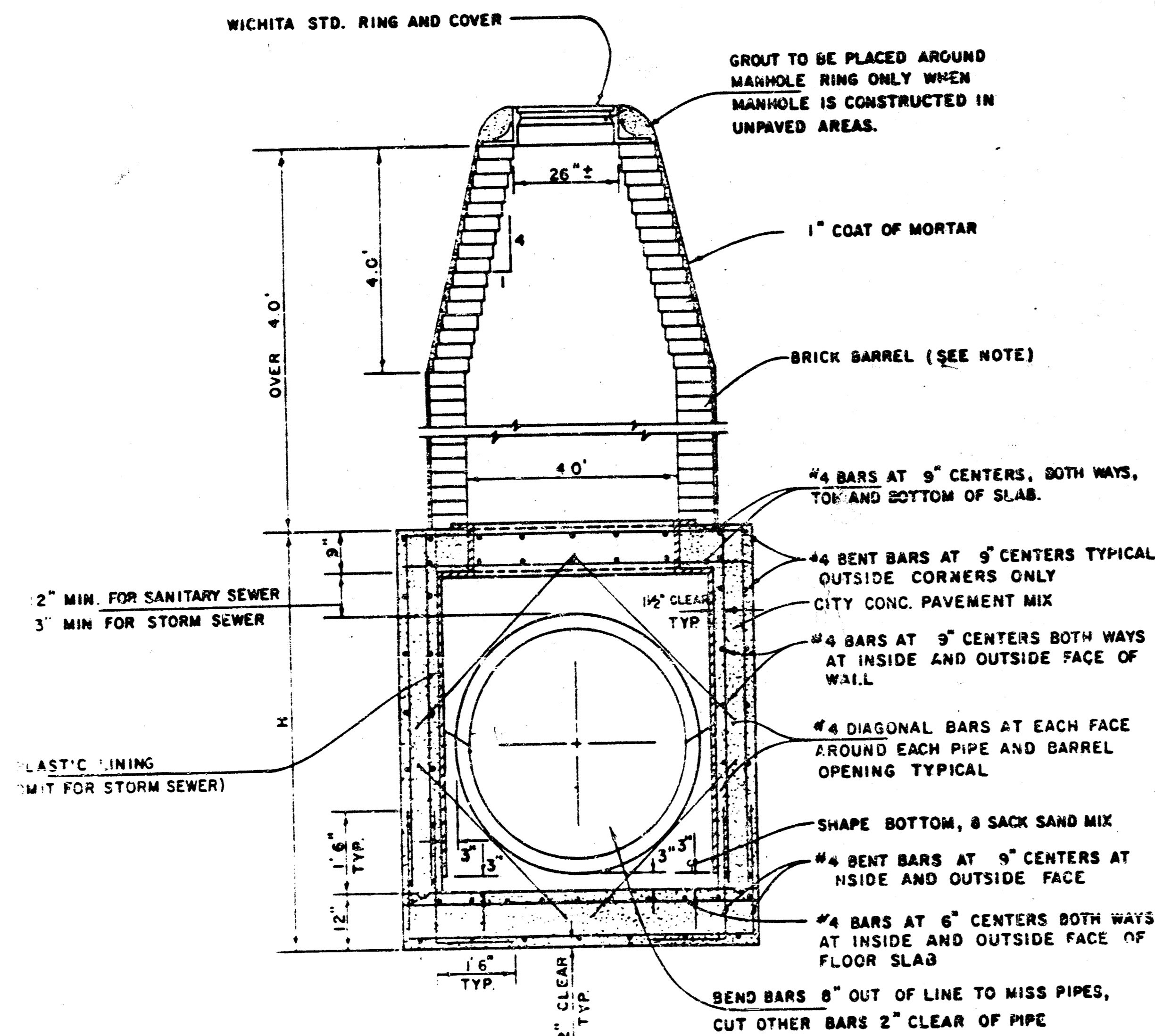
**REINFORCED CONCRETE MANHOLE**  
(STA. 4+22.0, LINE 1)  
(Reinforcing Omitted from Detail for Clarity)



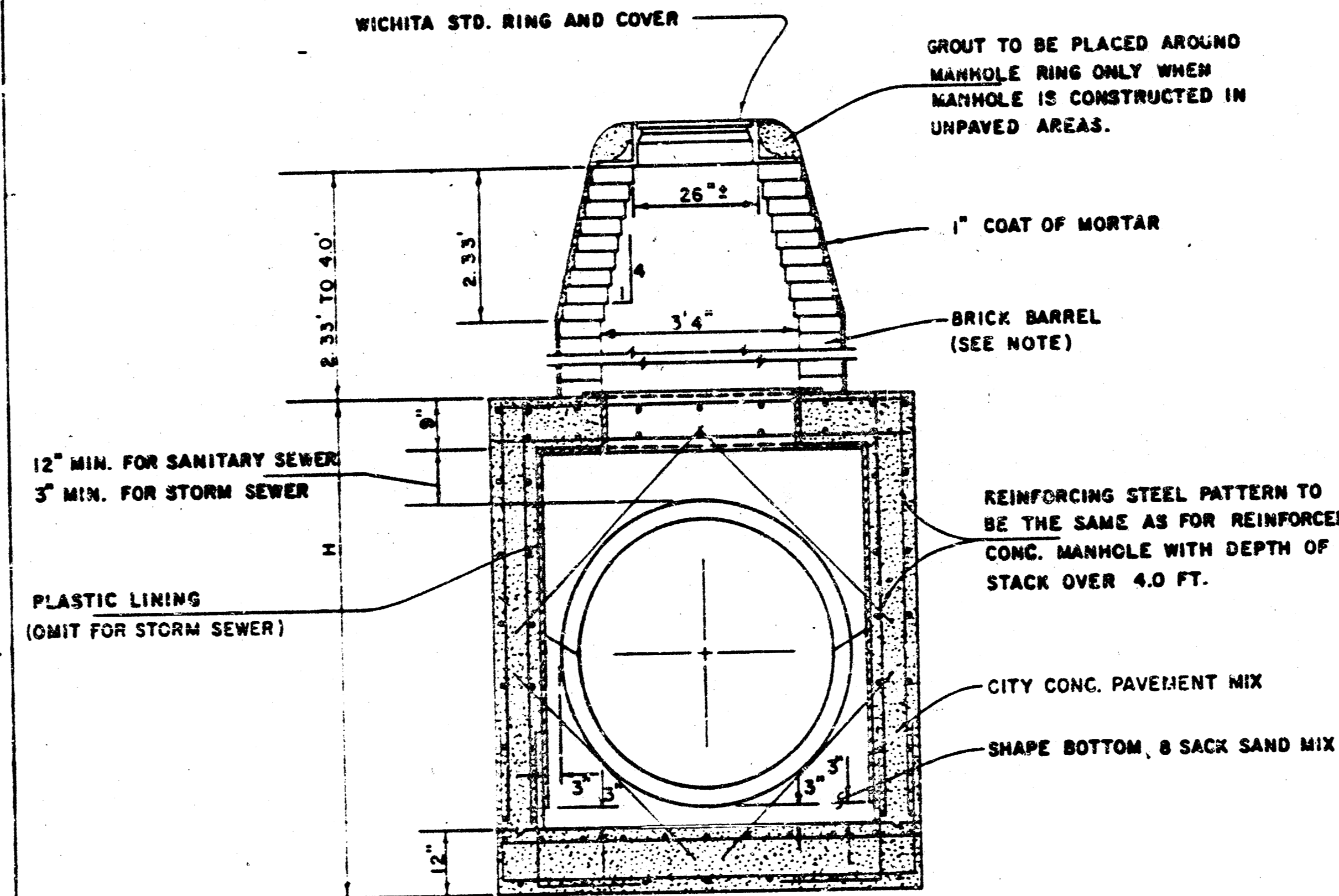
**V.C.P. CONNECTION DETAIL**  
SANITARY SEWER ONLY



**R.C.P. CONNECTION DETAIL**  
SANITARY SEWER ONLY

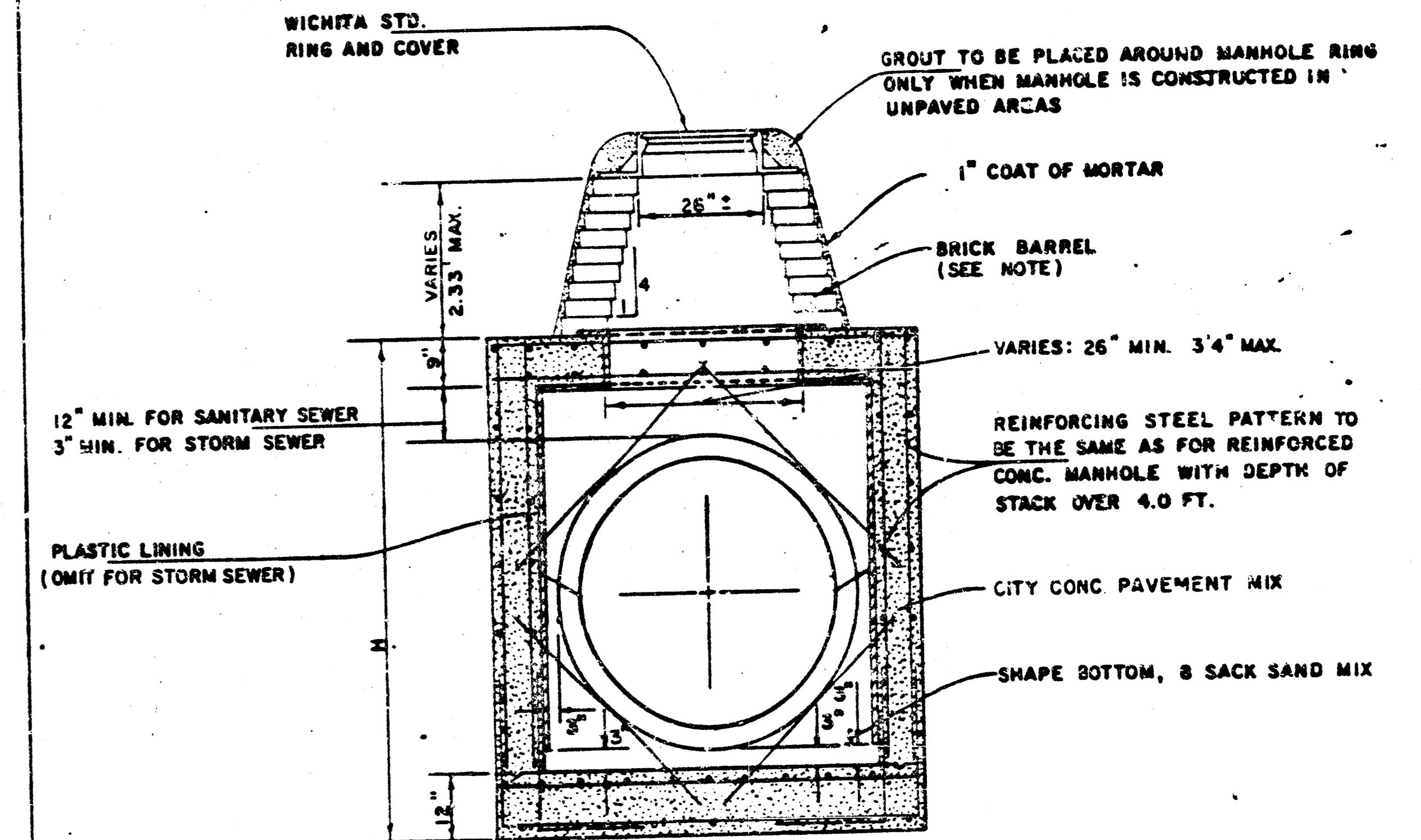


**REINFORCED CONCRETE MANHOLE**  
DEPTH OF STACK: OVER 4.0'  
SCALE 1" = 2'



**REINFORCED CONCRETE MANHOLE**  
DEPTH OF STACK: 2.33' TO 4.0'  
SCALE 1" = 2'

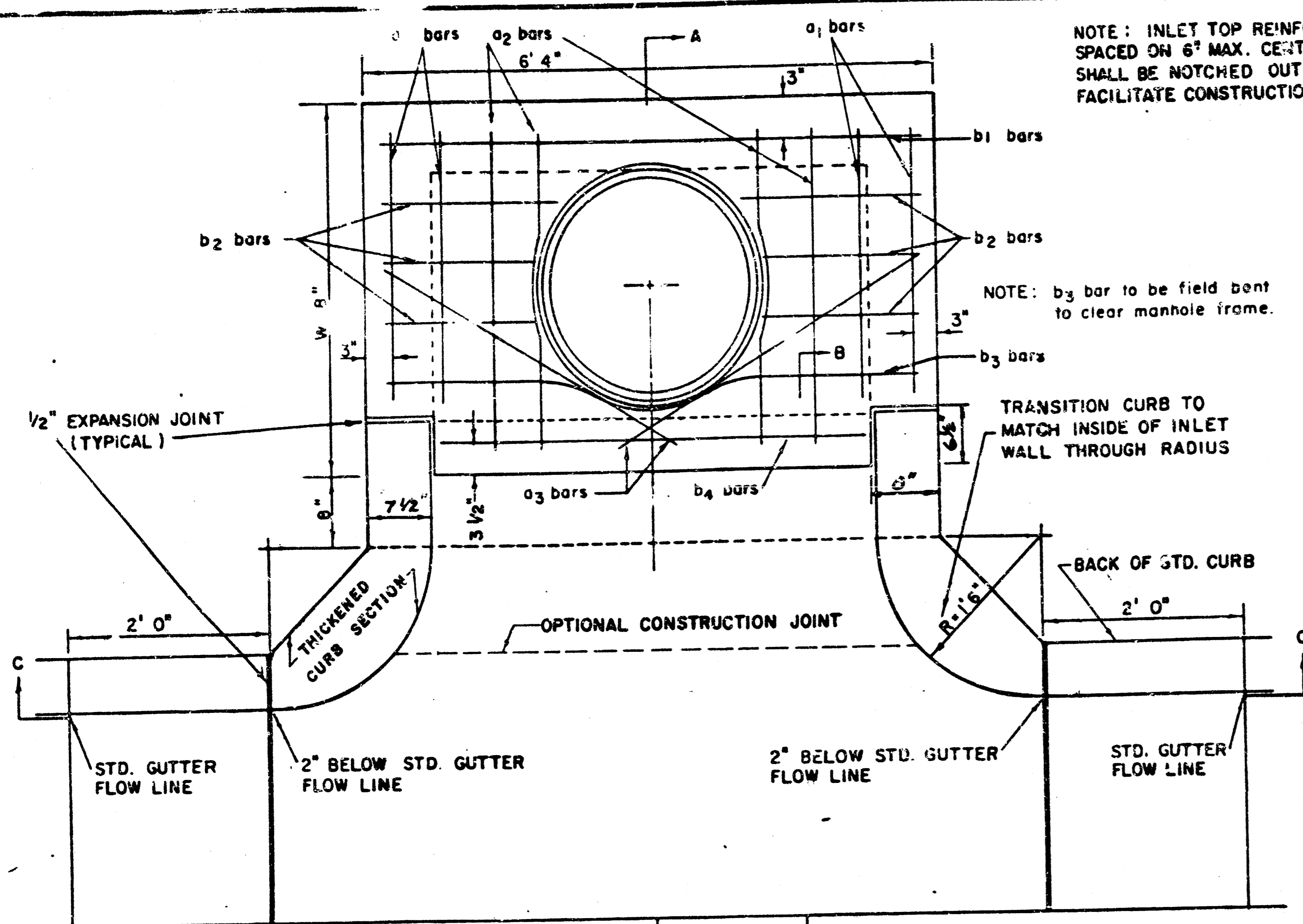
**NOTE**  
BRICK BARRELS LESS THAN 15' DEEP SHALL HAVE 8" WALLS EXCEPT WHEN LOCATED WITHIN PUBLIC STREET OR ALLEY PAVEMENT THEN THE WALL SHALL BE 12". BRICK BARRELS MORE THAN 15' DEEP SHALL HAVE 12" WALLS. THE "L" AND "W" DIMENSIONS SHALL BE A MINIMUM OF 5'6" FOR BRICK BARRELS WITH 8" WALLS AND 6'2" FOR BRICK BARRELS WITH 12" WALLS WHEN THE BRICK BARRELS ARE OVER 4 FT. IN HEIGHT.



**REINFORCED CONCRETE MANHOLE**  
DEPTH OF STACK: 0' TO 2.33'  
SCALE 1" = 2'

**STANDARD DETAILS**  
**REINFORCED CONCRETE MANHOLES**  
CITY OF WICHITA  
FEBRUARY 1984

**FILMED FROM THE BEST AVAILABLE COPY ....**



NOTE: EXPANSION JOINT ONLY IN CURB AREA WITH CONC. PAVEMENT.

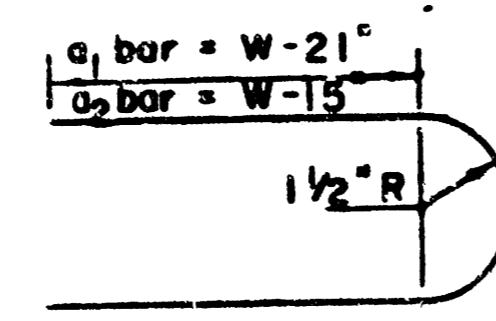
PLAN

NOTE: INLET TOP REINFORCING SHALL BE SPACED ON 6" MAX. CENTERS. INLET LIDS SHALL BE NOTCHED OUT AS INDICATED TO FACILITATE CONSTRUCTION OF CURB.

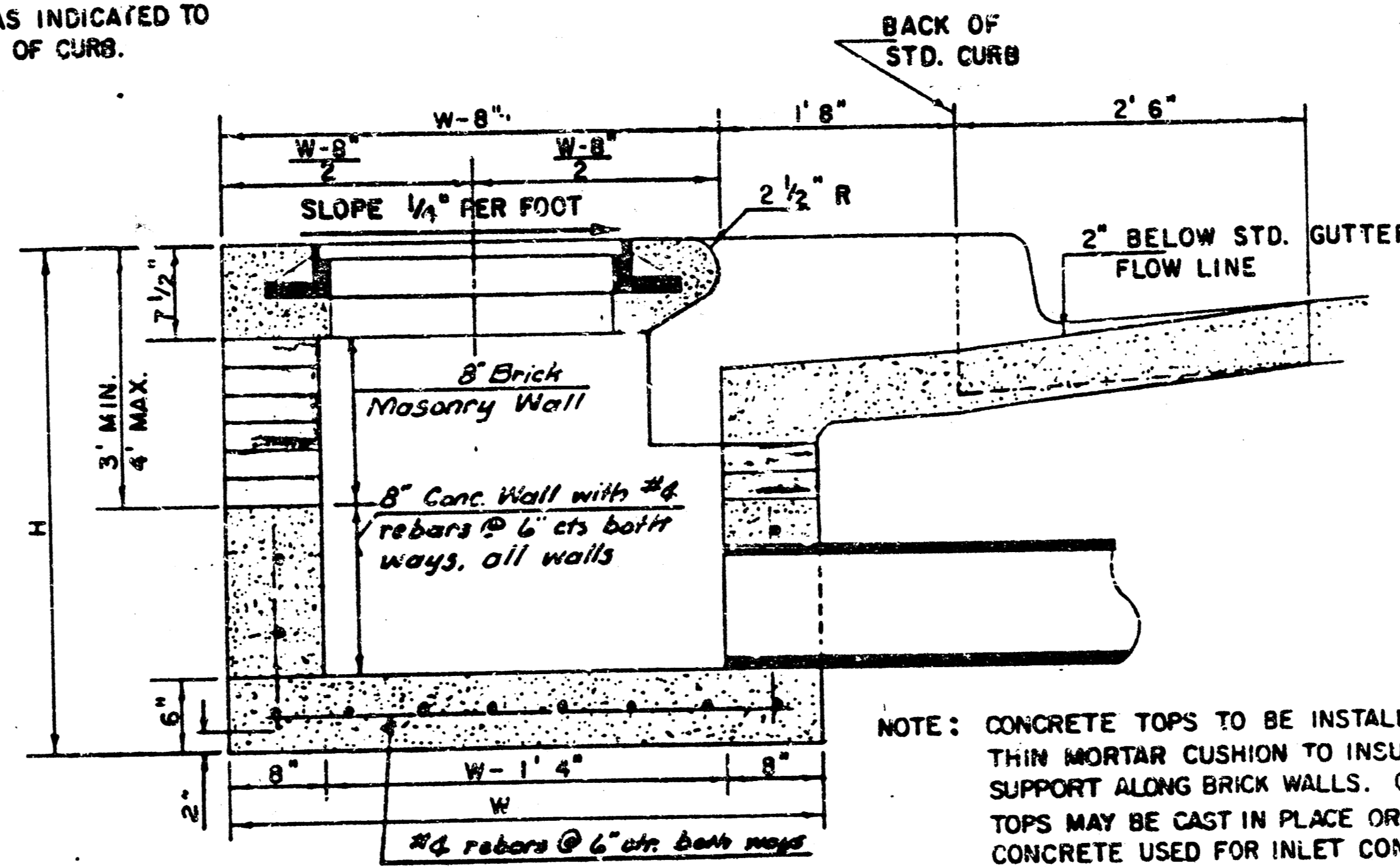
NOTE: b3 bar to be field bent to clear manhole frame.

TRANSITION CURB TO MATCH INSIDE OF INLET WALL THROUGH RADIUS

BACK OF STD. CURB



BENDING DIAGM



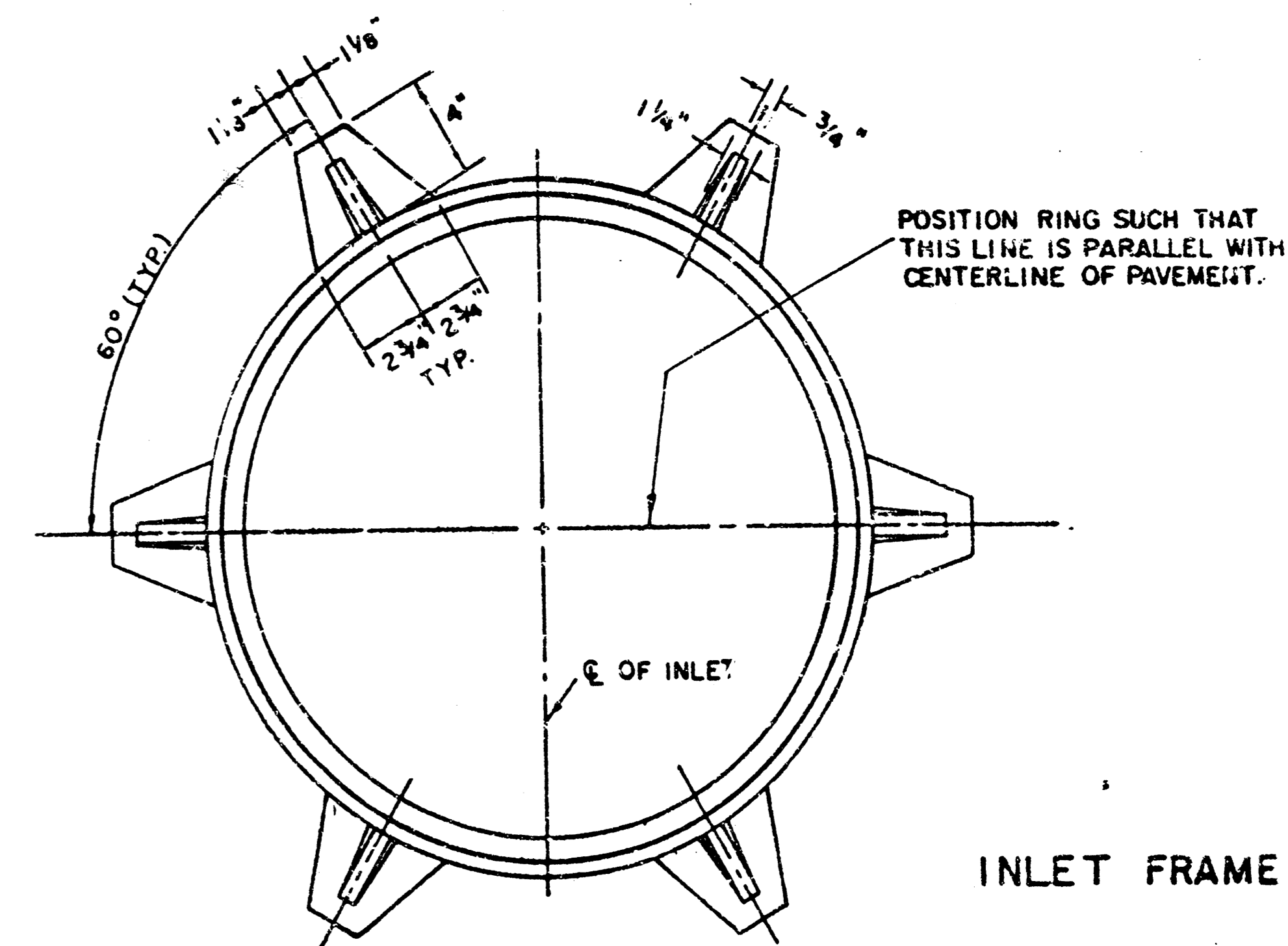
SECTION A-A

NOTE: CONCRETE TOPS TO BE INSTALLED ON THIN MORTAR CUSHION TO INSURE FULL SUPPORT ALONG BRICK WALLS. CONCRETE TOPS MAY BE CAST IN PLACE OR PRECAST. CONCRETE USED FOR INLET CONSTRUCTION SHALL BE CONCRETE PAVEMENT MIX.

NOTE: CONTRACTOR SHALL HAVE THE OPTION OF CONSTRUCTING 8" BRICK MASONRY WALLS BETWEEN THE CONCRETE INLET BASE AND TOP ON THIS INLET WHEN W = 4' 4" AND H = 6' 6" OR LESS.

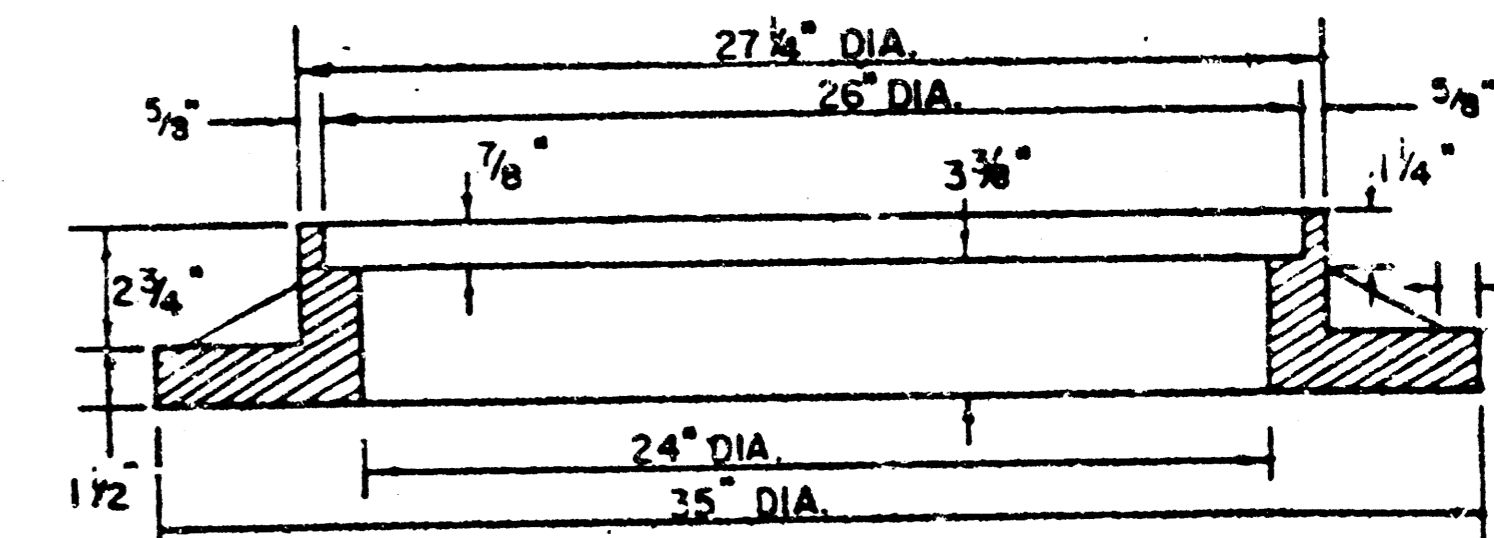
ADDITIONAL CURB AND GUTTER CONSTRUCTION NECESSARY TO CONNECT SET-BACK INLET TO PAVEMENT WILL BE PAID FOR AT THE UNIT PRICE BID FOR EACH INLET HOODUP.

INLET INVERT SHALL BE SHAPED WITH 8 SACK SAND MIX CONCRETE TO CREATE FLOW CHANNELS AND TO INCREASE HYDRAULIC EFFICIENCY SUCH THAT THE INLET WILL BE SELF-CLEANING BETWEEN ALL INLET AND/OR OUTLET PIPES.



INLET FRAME

WEIGHT = 180 LBS.



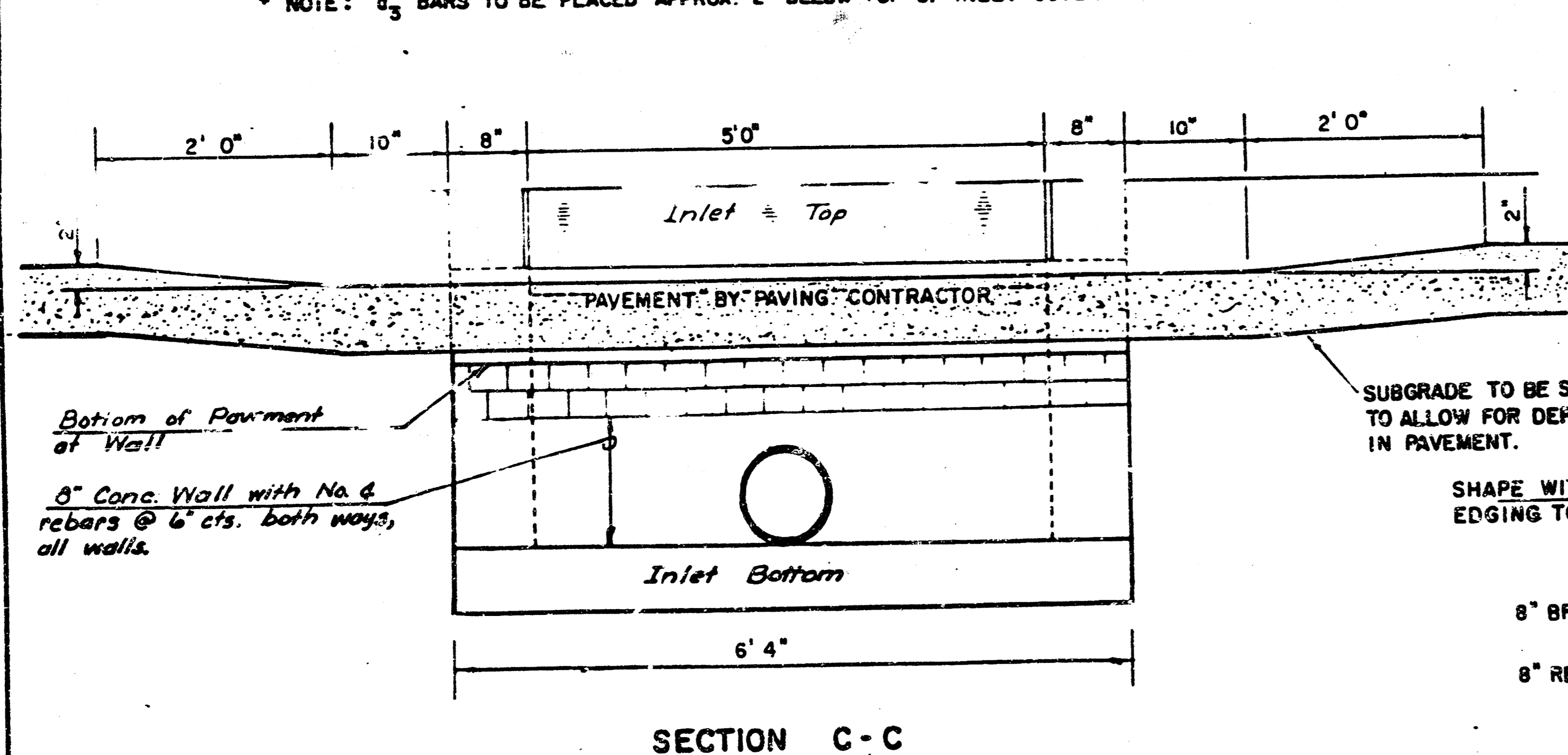
SEE CITY OF WICHITA STANDARD MANHOLE FRAME AND COVER DETAIL SHEET FOR COVER DETAILS TO BE USED WITH INLET FRAME.

STEEL SCHEDULE

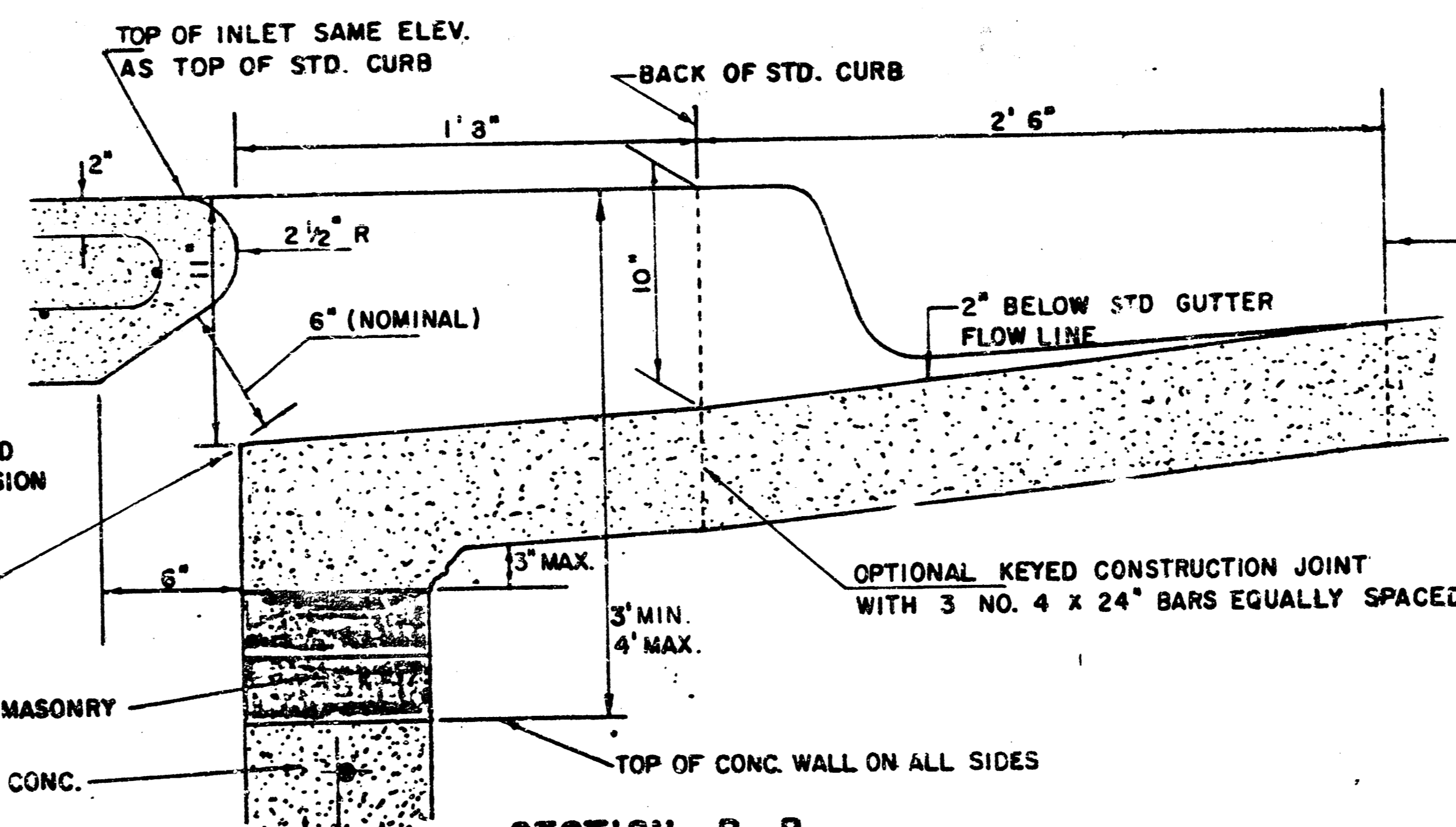
BAR NUMBER	a1		a2		a3		b1				b2		b3		b4		WT. LBS.
	4	4	2	1	3	5	7	9	6	1	1	6	1	1	1	1	
SIZE	"4	"4	"4	"4	"4	"4	"4	"4	"4	"4	"4	"4	"4	"4	"4	"6	
W=4'4"	5'7"	6'7"	4'0"	6'1"	-	-	-	-	1'9"	6'2"	4'8"	60±					
W=5'4"	7'7"	8'7"	5'0"	6'1"	-	-	-	-	1'9"	6'2"	4'8"	81±					
W=6'4"	9'7"	10'7"	6'0"	6'1"	-	-	-	-	1'9"	6'2"	4'8"	101±					
W=7'4"	11'7"	12'7"	7'0"	6'1"	-	-	-	-	1'9"	6'2"	4'8"	121±					
W=8'4"	13'7"	14'7"	8'0"	6'1"	-	-	-	-	1'9"	6'2"	4'8"	141±					

\* NOTE: a3 BARS TO BE PLACED APPROX. 2" BELOW TOP OF INLET COVER

STANDARD CURB INLET PRECAST TOPS			
W	PRE-CAST TOP SIZE	PIPE SIZE	CU. YD. CONC.
4' 4"	3' 8" x 6' 4" x 7 1/2"	21" & SMALLER	0.38 ±
5' 4"	4' 8" x 6' 4" x 7 1/2"	24" & 30"	0.51 ±
6' 4"	5' 8" x 6' 4" x 7 1/2"	36" & 42"	0.64 ±
7' 4"	6' 8" x 6' 4" x 7 1/2"	48" & 54"	0.77 ±
8' 4"	7' 8" x 6' 4" x 7 1/2"	60" & 66"	0.90 ±



SECTION C-C



SECTION B-B

LIMITS OF GUTTER SHAPING AND/OR EDGE OF COMB. CURB AND GUTTER

DETAIL STANDARD TYPE IA CURB INLET

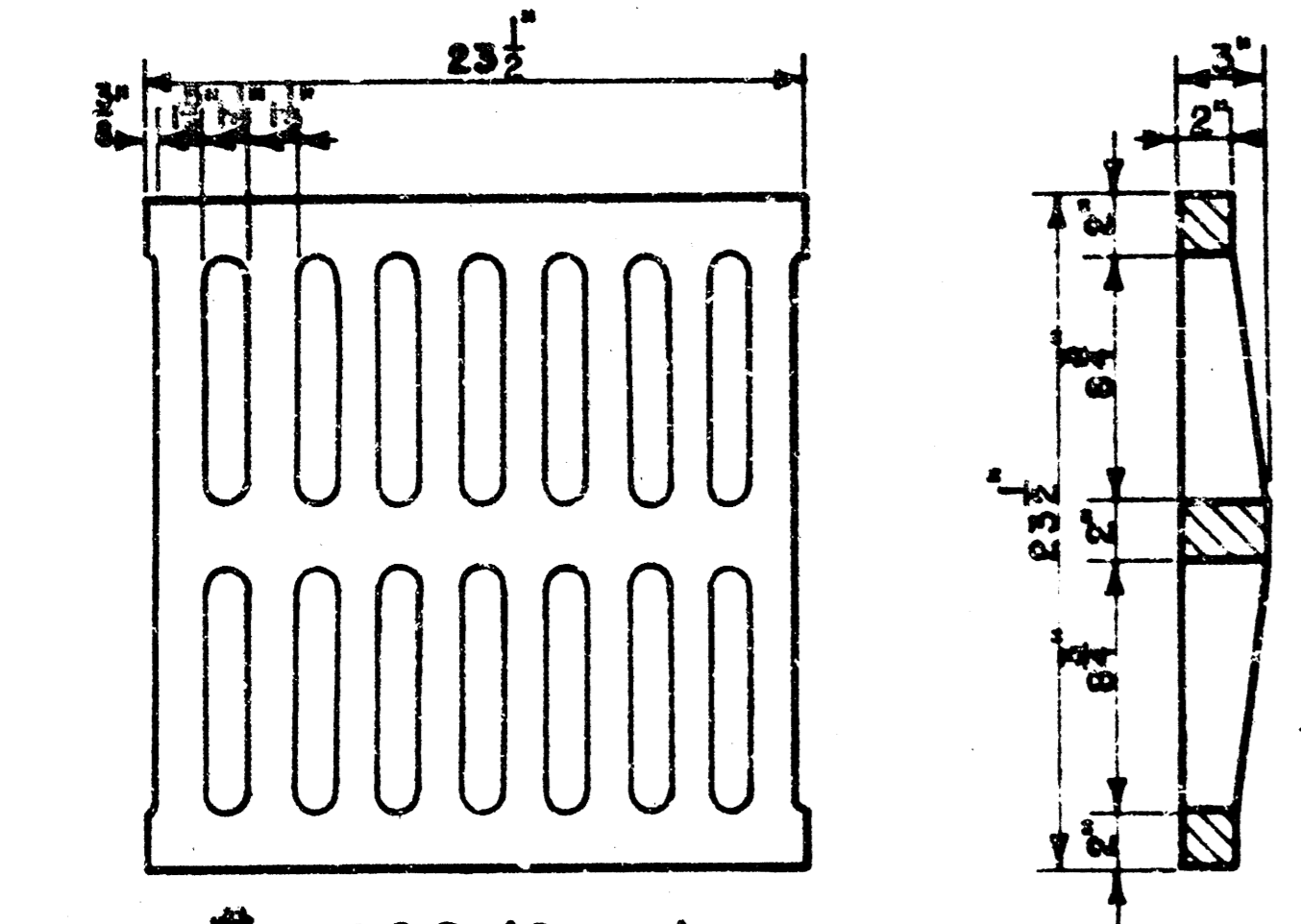
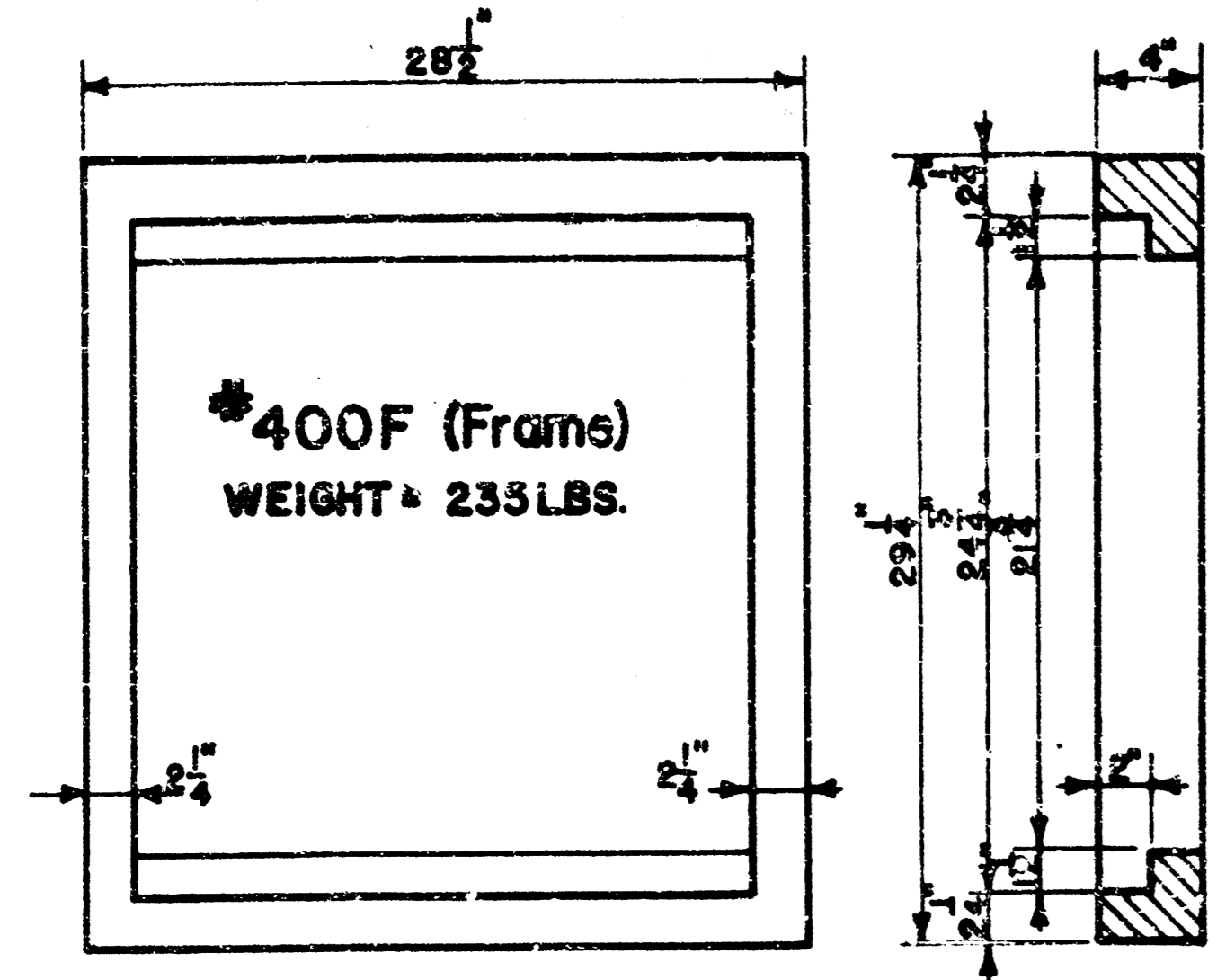
CITY OF WICHITA, KANSAS

INLET OPENING = 6" x 5' 0"

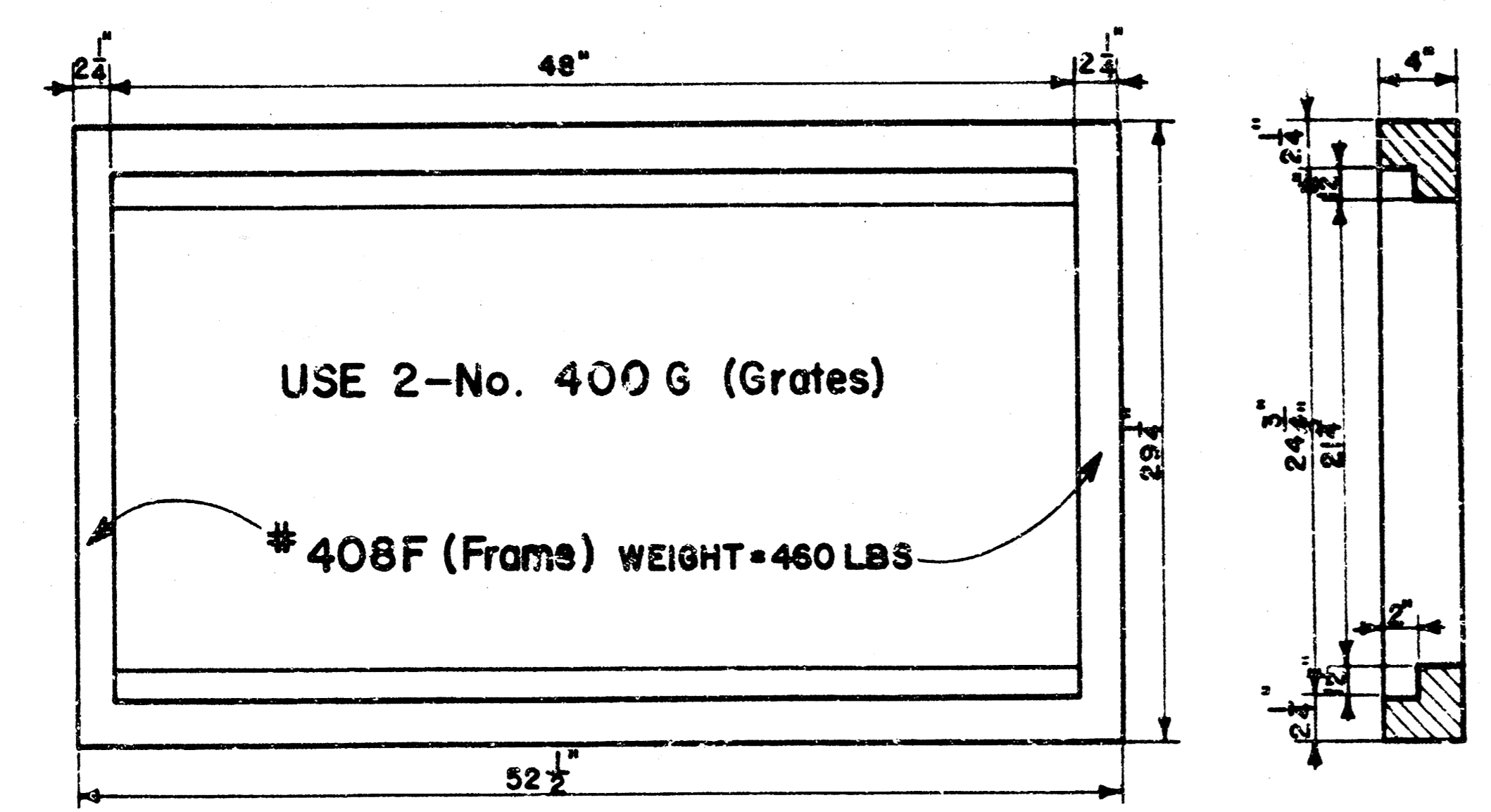
JUNE 1984

5/7

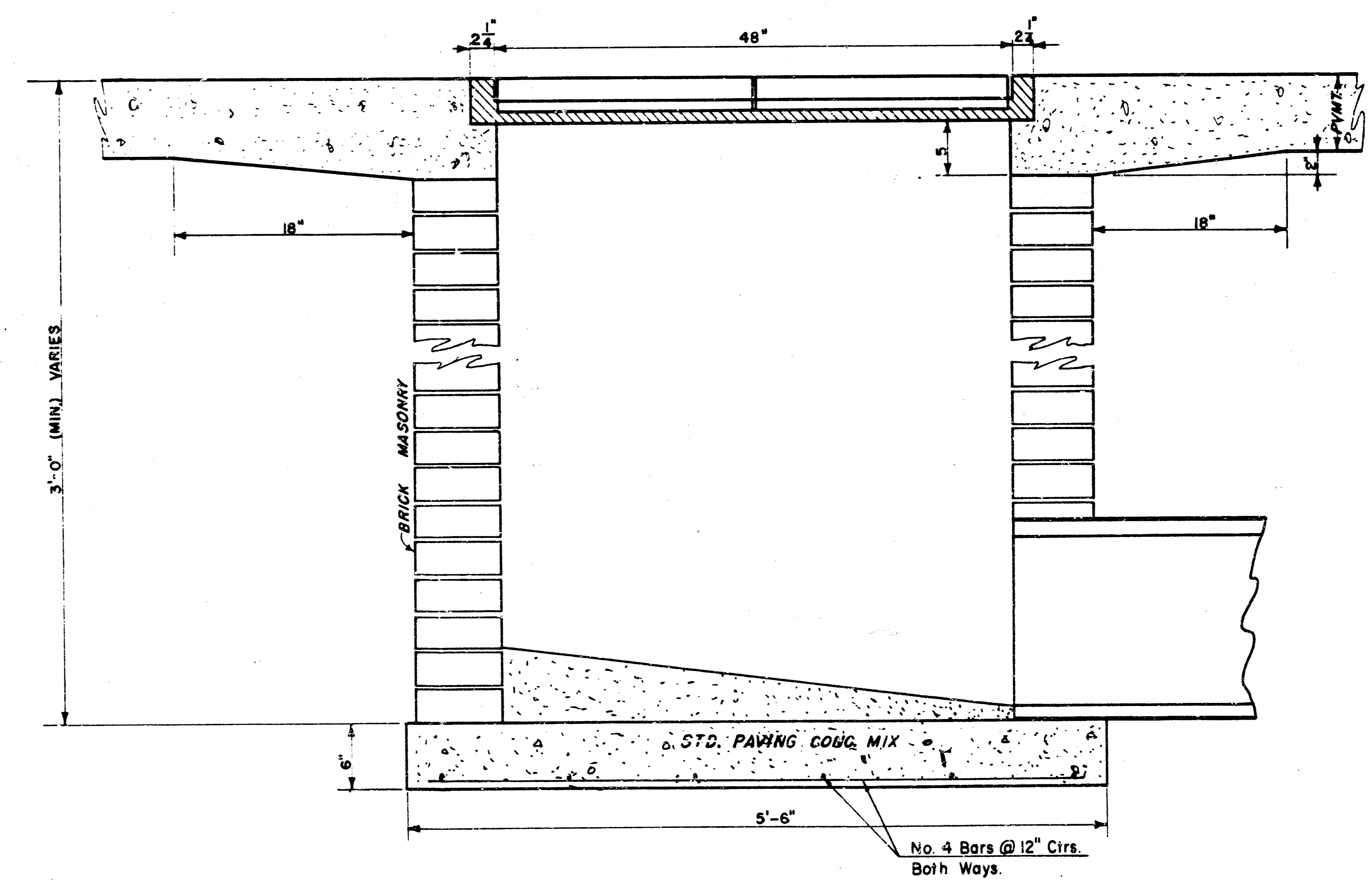
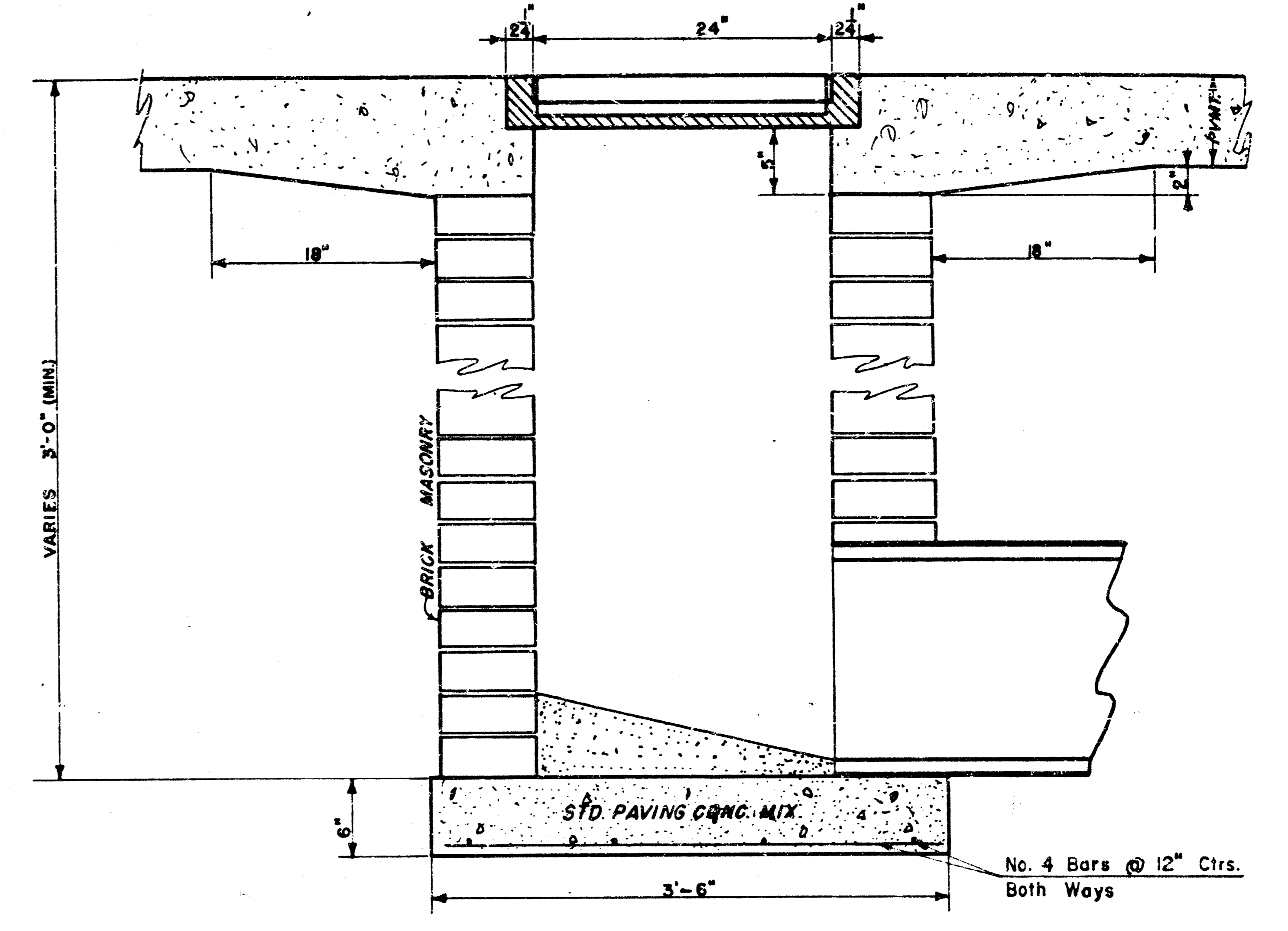
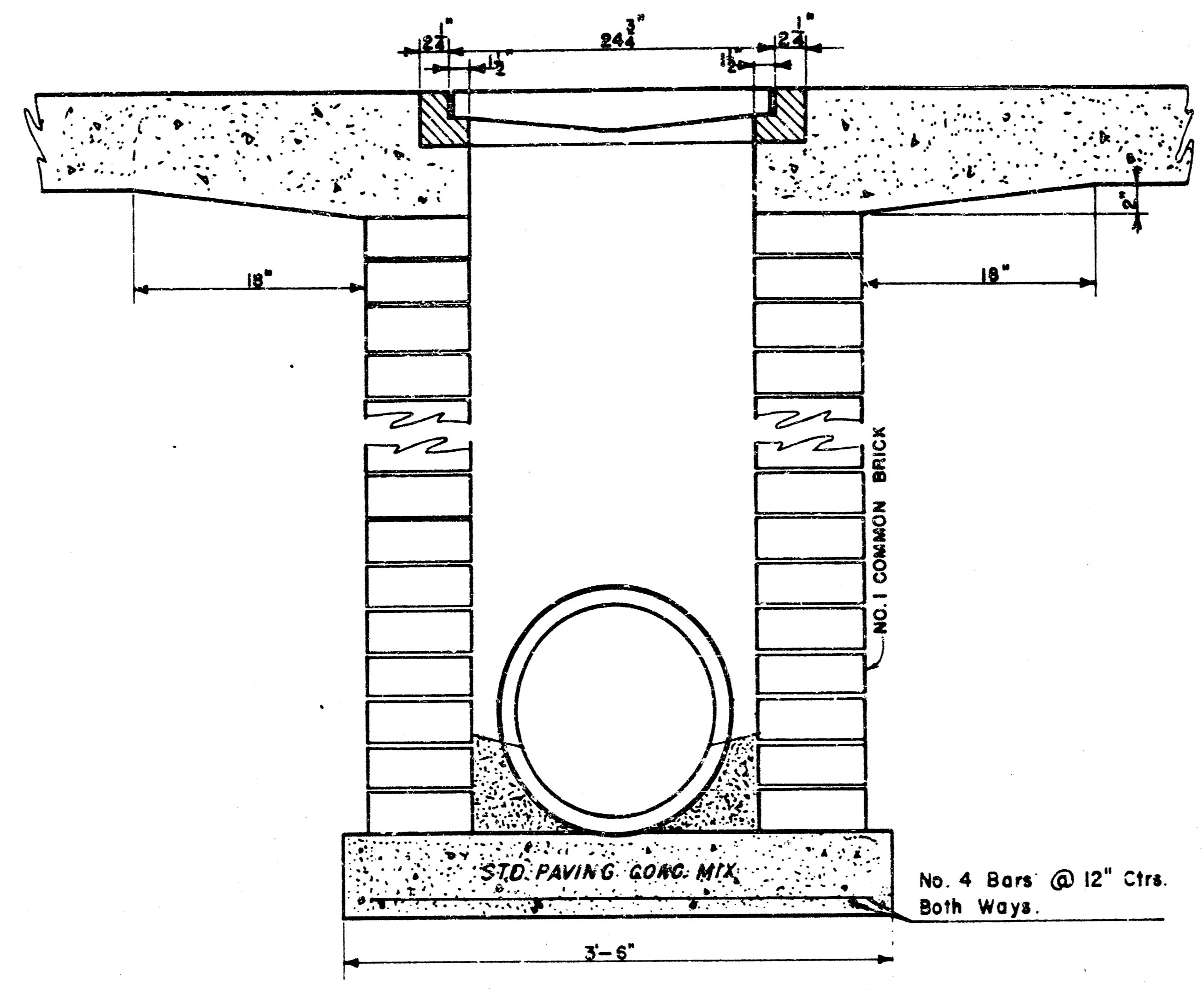
NOTE: Grates shall be imprinted on the top surface with "CITY OF WICHITA" using letters at least 1" in height. Other marking methods may be used only if approved by the engineer.



24"x24" Frame & Grate Detail



Double 24"x24" Frame Detail

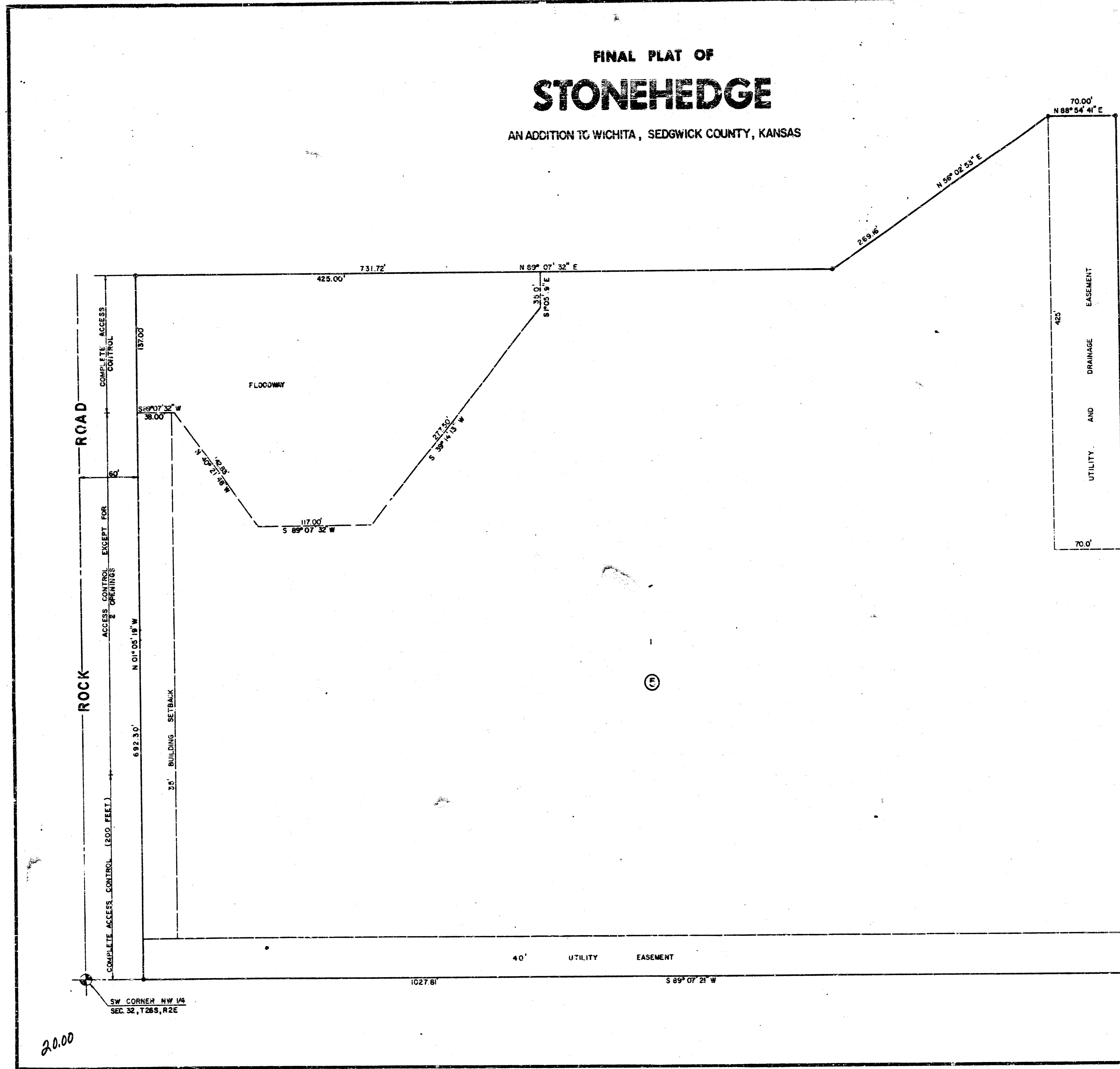


**DROP INLET DETAILS**

M.E. Lindebak, City Engineer  
 City of Wichita, Kansas  
 Project: NORTHROCK BUSINESS PARK Ph2  
 Project No. 468-76-245-81623-000-000-001  
 Date: January, 1987  
 Scale: 1-1/2" = 1'-0"

# FINAL PLAT OF STONEHEDGE

AN ADDITION TO WICHITA, SEDGWICK COUNTY, KANSAS



This plat of "Stonehedge" has been submitted to and approved by the Wichita-Sedgwick County Metropolitan Area Planning Commission, Wichita, Kansas.  
 Dated this 23<sup>rd</sup> day of OCTOBER, 1980.  
 Wichita-Sedgwick County Metropolitan Area Planning Commission  
Michael J. ... Chairman  
Robert A. Lakin Secretary

This plat approved and all dedications shown hereon, if any, accepted by the City Commission of the City of Wichita, Kansas this 2<sup>nd</sup> day of DEC, 1980.  
W.C. Brown Mayor  
Donald C. ... City Clerk

This plat approved and all dedications shown hereon, if any, accepted by the Board of County Commissioners of Sedgwick County, Kansas this 31 day of December, 1980.  
Everett Patrick Chairman  
Tom Scott Commissioner  
Donald E. Grogg Commissioner  
 Attest: Dorothy K. White County Clerk  
 Entered on Transfer Record this 31 day of December, 1980.  
Dorothy K. White County Clerk

State of Kansas ss:  
 County of Sedgwick  
 This is to certify that this instrument was filed for record in the Register of Deeds Office at 10:45 AM o'clock on the 5<sup>TH</sup> day of JANUARY, 1981.  
Bette F. McCart Register of Deeds  
Pat Kettler Deputy



#521634

SW CORNER LOT 13  
COMOTARA IND. PARK 2nd ADD.

20.00

FILMED FROM THE BEST  
AVAILABLE COPY