

# STORM SEWER PLANS FOR WOODSPRING 3RD S.W.S. NO. 334 PROJECT NO. 468-76-245-81669-000-000-001

CITY OF WICHITA, KANSAS  
MICHAEL E. LINDEBAK, CITY ENGINEER

### GENERAL NOTES

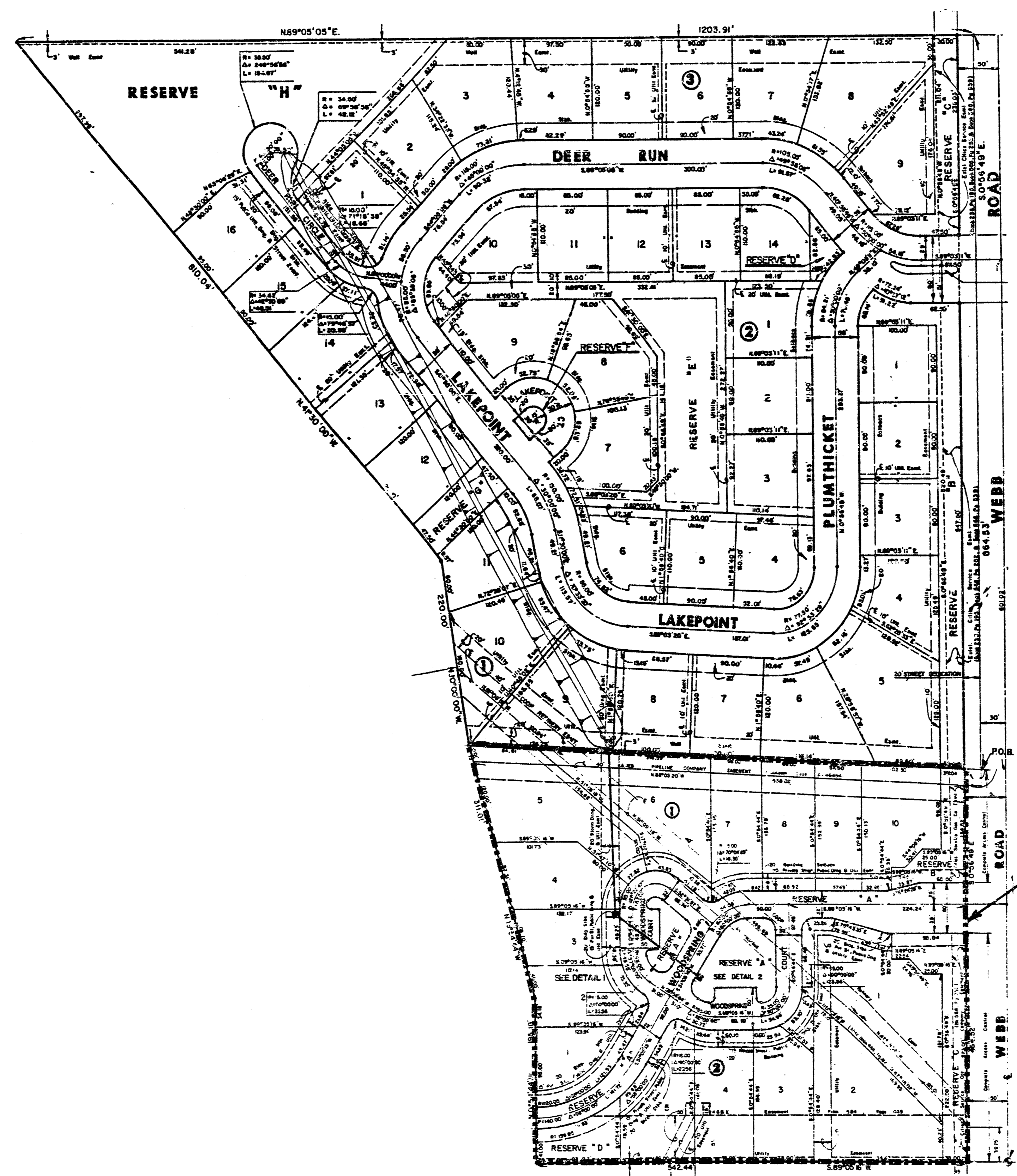
1. THE TOPS OF INLET AND MANHOLE AS NOTED ON THE PLANS MAY VARY SO AS TO MEET PROPOSED TOP OF CURB ELEVATIONS OR PAVEMENT ELEVATIONS. THE FIELD ENGINEER SHALL LOCATE INLETS AND MANHOLES WITH REFERENCE TO PROPOSED PAVING PLANS OF THE PERTINENT STREETS.
2. THE CONTRACTOR SHALL BE RESPONSIBLE FOR PRESERVING PROPERTY IRONS. THE CONTRACTOR SHALL BE REQUIRED TO RE-ESTABLISH ANY PROPERTY IRONS WHICH ARE DAMAGED OR DESTROYED BY HIS CONSTRUCTION OPERATIONS. SUCH IRONS SHALL BE RE-ESTABLISHED BY A LICENSED LAND SURVEYOR OR A LICENSED PROFESSIONAL ENGINEER IN ACCORDANCE WITH STATE LAWS.
3. CONTRACTOR SHALL NOTIFY THE UTILITY COMPANIES OF CONSTRUCTION SCHEDULING.
4. EXISTING UTILITIES AND THEIR LOCATIONS, AS SHOWN ON THE PLANS, REPRESENT THE BEST INFORMATION OBTAINABLE FOR DESIGN. LOCATION INFORMATION HAS BEEN OBTAINED FROM THE VARIOUS UTILITY COMPANIES AND IS EITHER FROM COMPANY RECORD DRAWINGS OR COMPANY PROVIDED FIELD LOCATIONS. THE PLAN LOCATIONS SHOWN ARE NOT GUARANTEED. ADDITIONAL EXISTING UTILITIES MAY ALSO BE ENCOUNTERED.

NOTE: NOTIFY THE FOLLOWING COMPANIES PRIOR TO ANY EXCAVATION:

BELL TELEPHONE COMPANY	1-316-571-2115
CABLEVISION	262-0661
KP&L COMPANY	263-7511
KANSAS GAS & ELECTRIC	264-1141
KANSAS ONE-CALL	1-800-344-7233
KANEB	272-408
NORTHWEST CENTRAL PIPELINE	514-0382
CO-OP REFINERY PIPELINE	1-316-221-1100

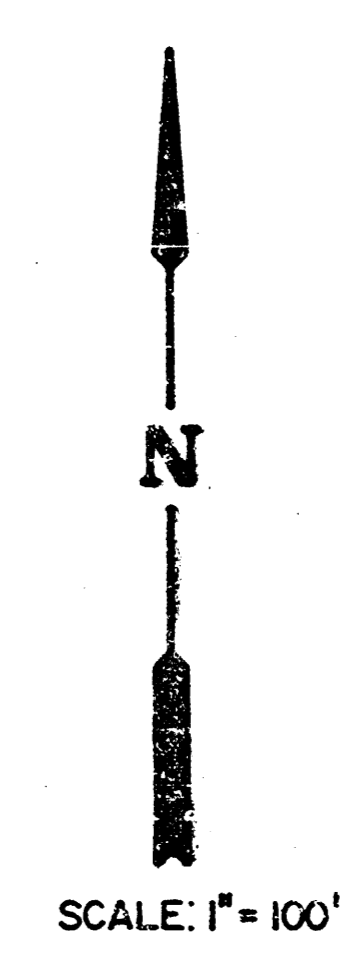
### BENCH MARKS

- B.M. #1 WEBB ROAD AND 25TH STREET NORTH  
CITY OF WICHITA BENCH MARK  
DISC, 32" NORTH AND 29" EAST  
OF QUARTER SECTION CORNER.  
ELEV. = 225.091
- B.M. #2 SPIKE STEP IN 4" POLE, ± 500'  
WEST OF WEBB ROAD  
ELEV. = 221.87

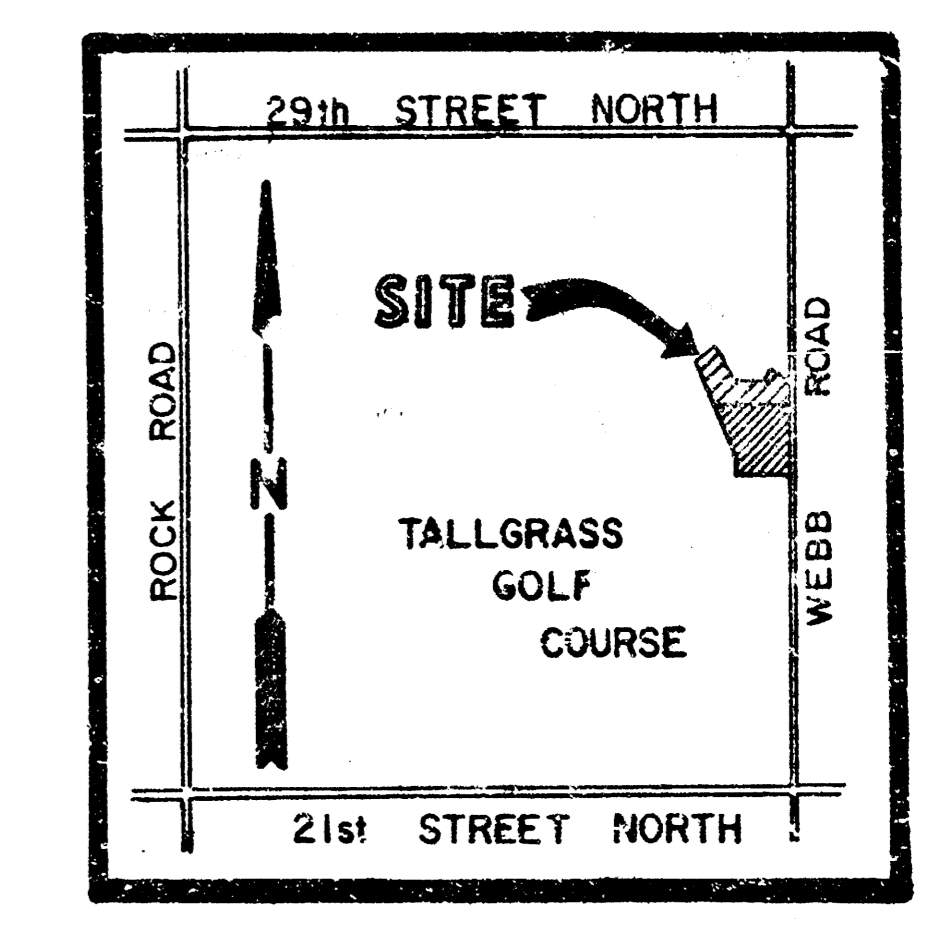


### INDEX TO DRAWINGS

SHEET NO.	DESCRIPTION
1	COVER SHEET
2-3	PLAN & PROFILE
4	STD. TYPE I-A DETAILS
5	DITCH CROSS SECTIONS
6	DEER RUN FINAL PLAT
7	WOODSPRING 3RD FINAL PLAT



*AS BUILTS  
1/88  
MEB*



**LOCATION MAP**

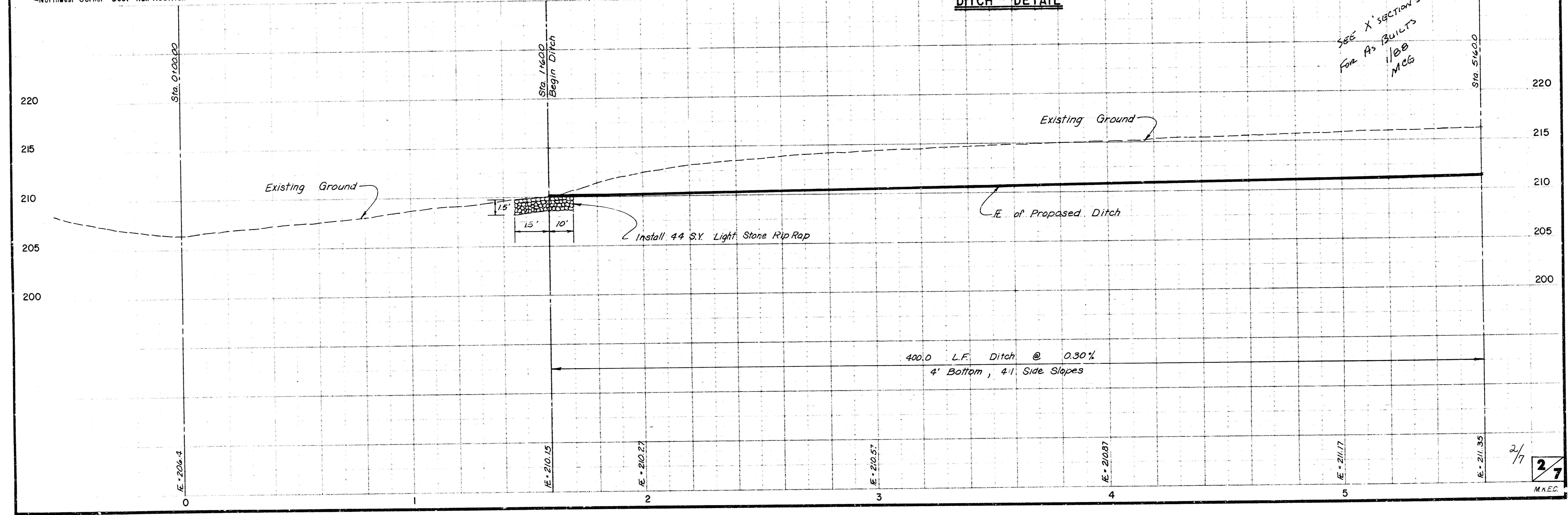
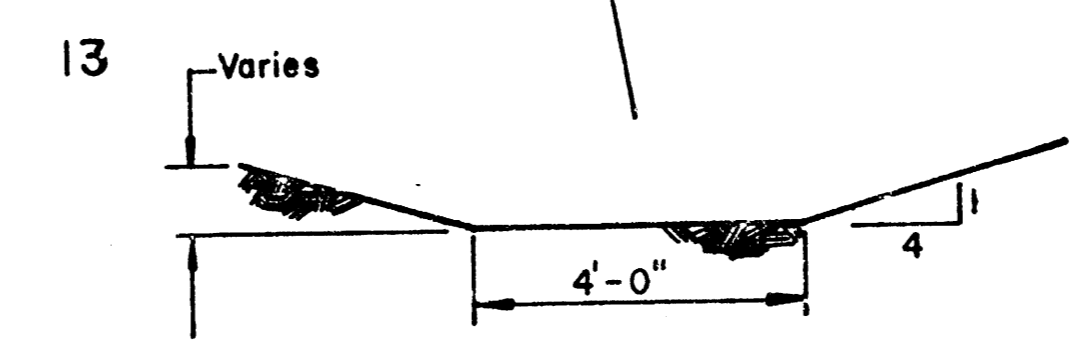
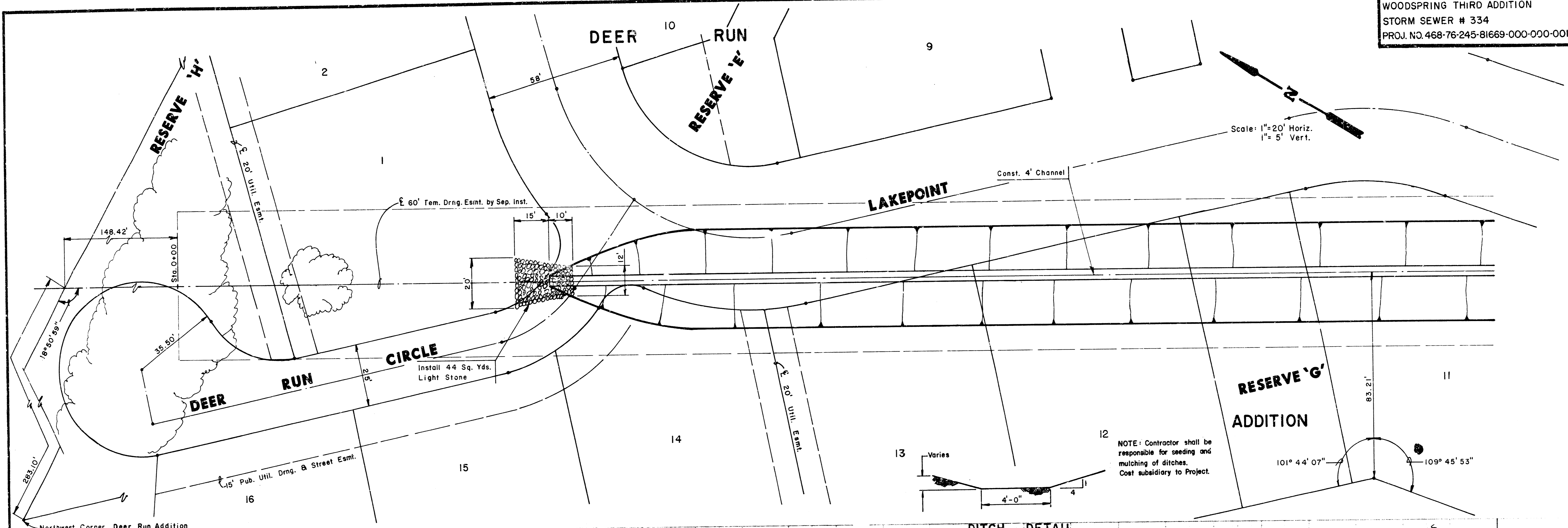
BENEFIT DISTRICT

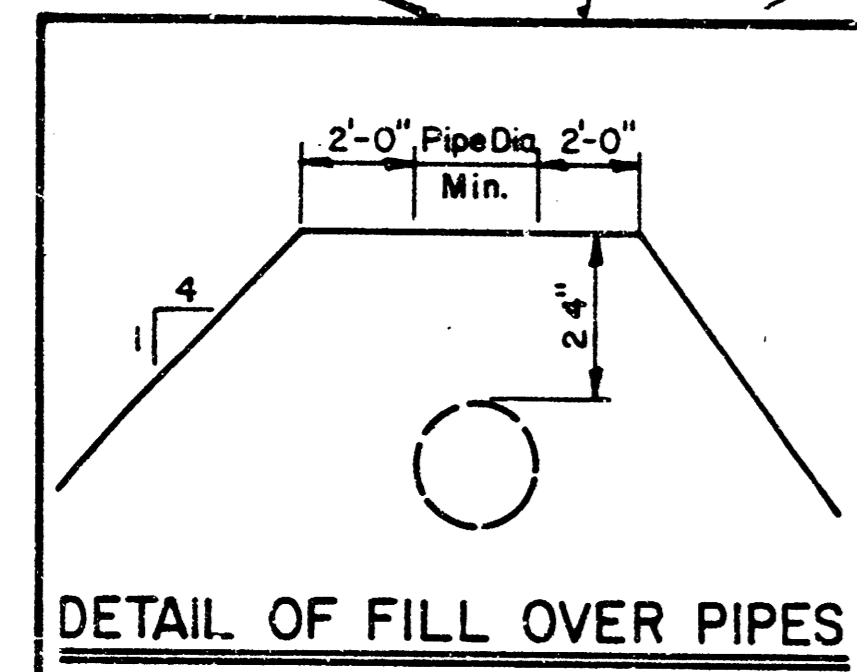
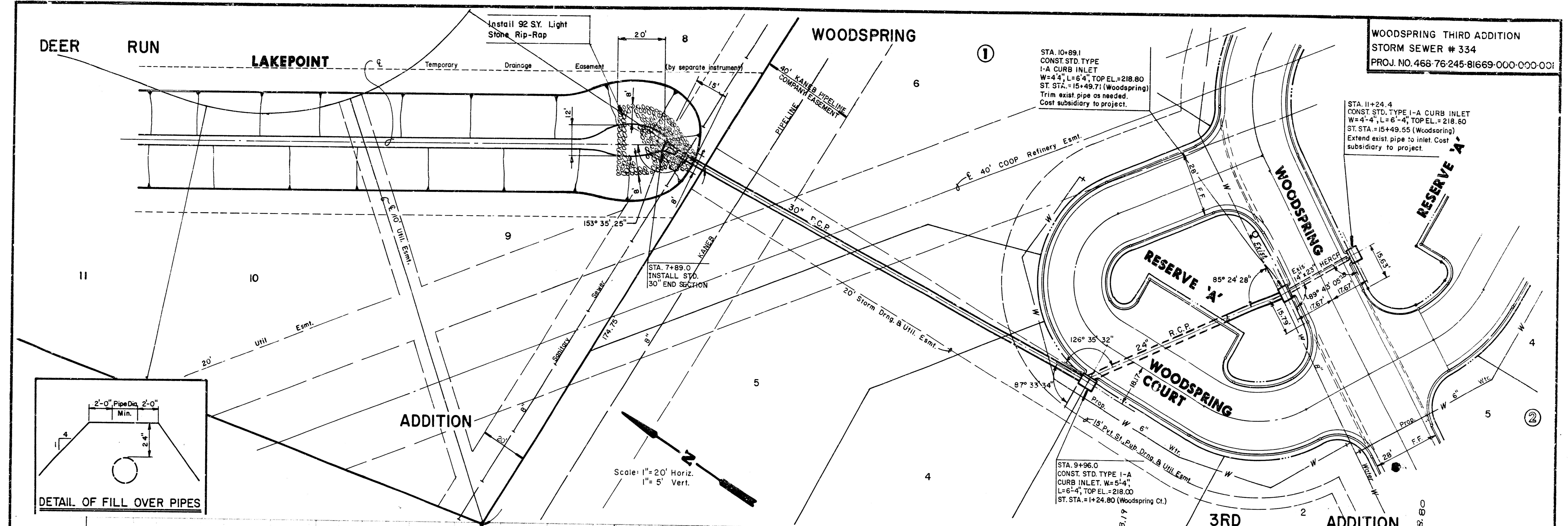


<b>MEC</b>	<b>WOODSPRING 3RD STORM WATER SEWER PLANS</b>	Design KKL
		Drawn by DDG
		Checked by KHB
		Date April 1987
		Job no.
MID-KANSAS ENGINEERING CONSULTANTS PA 3500 NORTH ROCK ROAD BUILDING #800 WICHITA, KANSAS 67226		Sheet <b>1</b> of <b>7</b>

682-6561

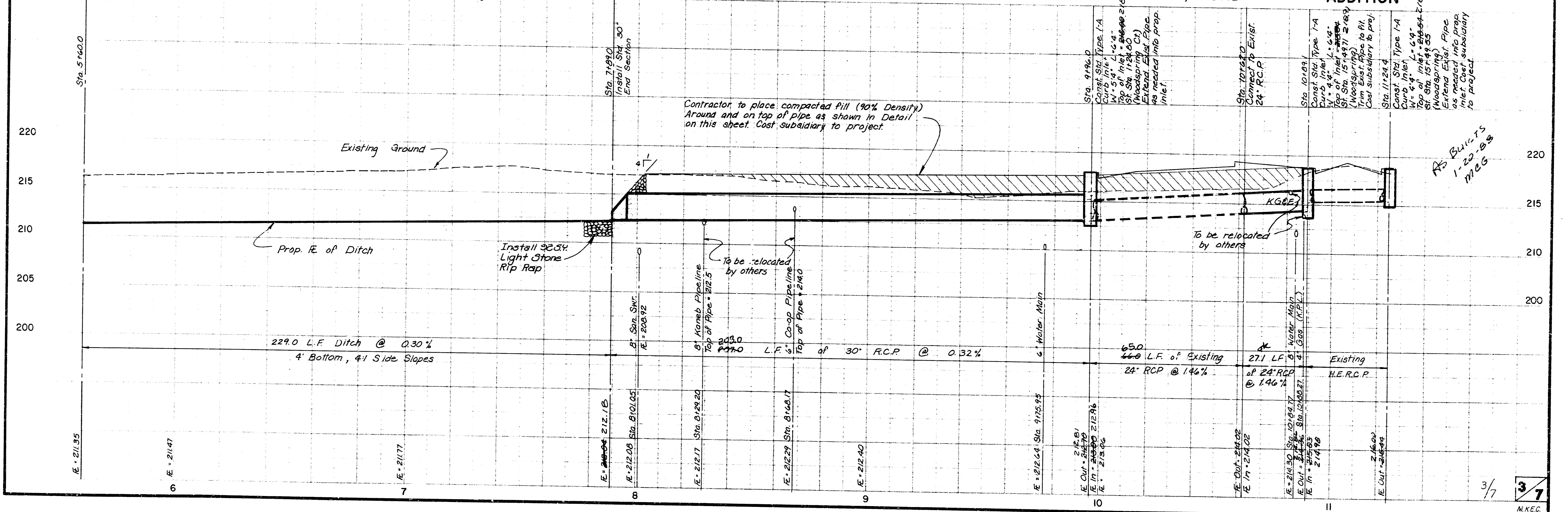
1/7





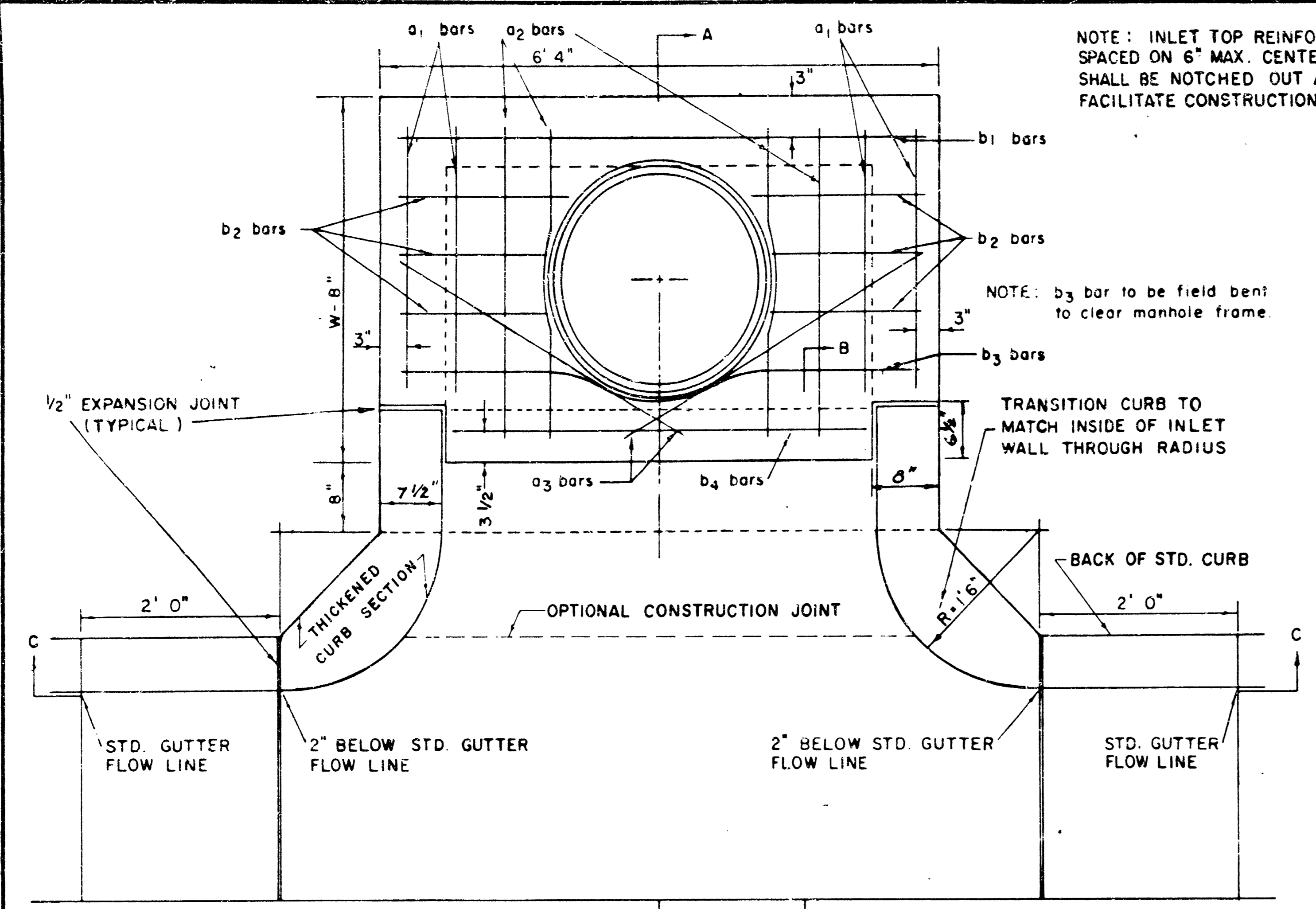
Scale: 1" = 20' Horiz.  
1" = 5' Vert.

WOODSPRING THIRD ADDITION  
STORM SEWER # 334  
PROJ. NO. 468-76-245-81669-000-000-001



Contractor to place compacted fill (90% Density) Around and on top of pipe as shown in Detail on this sheet. Cost subsidiary to project.

As Built  
1, 22, 83  
M.C.G.



PLAN

STEEL SCHEDULE

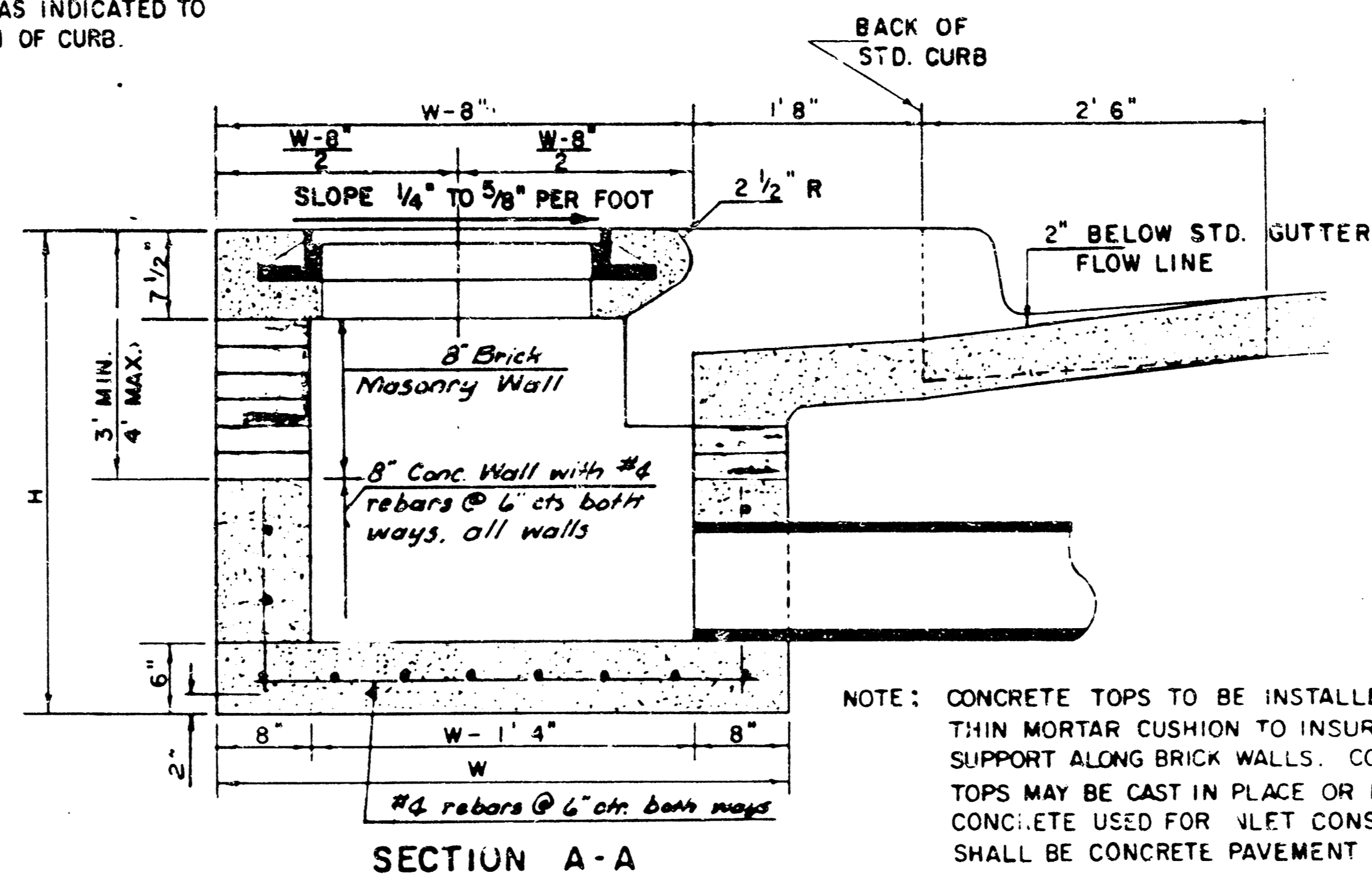
BAR NUMBER	a <sub>1</sub>	a <sub>2</sub>	a <sub>3</sub>	b <sub>1</sub>	b <sub>2</sub>	b <sub>3</sub>	b <sub>4</sub>	WT. LBS.
4	4	2	1	3	5	7	9	
SIZE	#4	#4	#4	#4	#4	#4	#4	#6
W=4'4"	5'7"	6'7"	4'0"	6'1"	-	-	-	1'9" 6'2" 4'8" 60±
W=5'4"	7'7"	8'7"	5'0"	6'1"	-	-	-	1'9" 6'2" 4'8" 81±
W=6'4"	9'7"	10'7"	6'0"	6'1"	-	-	-	1'9" 6'2" 4'8" 101±
W=7'4"	11'7"	12'7"	7'0"	6'1"	-	-	-	1'9" 6'2" 4'8" 121±
W=8'4"	13'7"	14'7"	8'0"	6'1"	-	-	-	1'9" 6'2" 4'8" 141±

\* NOTE: a<sub>3</sub> BARS TO BE PLACED APPROX. 2" BELOW TOP OF INLET COVER

BENDING DIAGRAM

STANDARD CURB INLET PRECAST TOPS

W	PRE-CAST TOP SIZE	PIPE SIZE	CU. YD. CONC.
4' 4"	3'6" x 6'4" x 7'1/2"	21" Ø SMALLER	0.38 ±
5' 4"	4'8" x 6'4" x 7'1/2"	24" Ø 30"	0.51 ±
6' 4"	5'8" x 6'4" x 7'1/2"	36" Ø 42"	0.64 ±
7' 4"	6'8" x 6'4" x 7'1/2"	48" Ø 54"	0.77 ±
8' 4"	7'8" x 6'4" x 7'1/2"	60" Ø 66"	0.90 ±



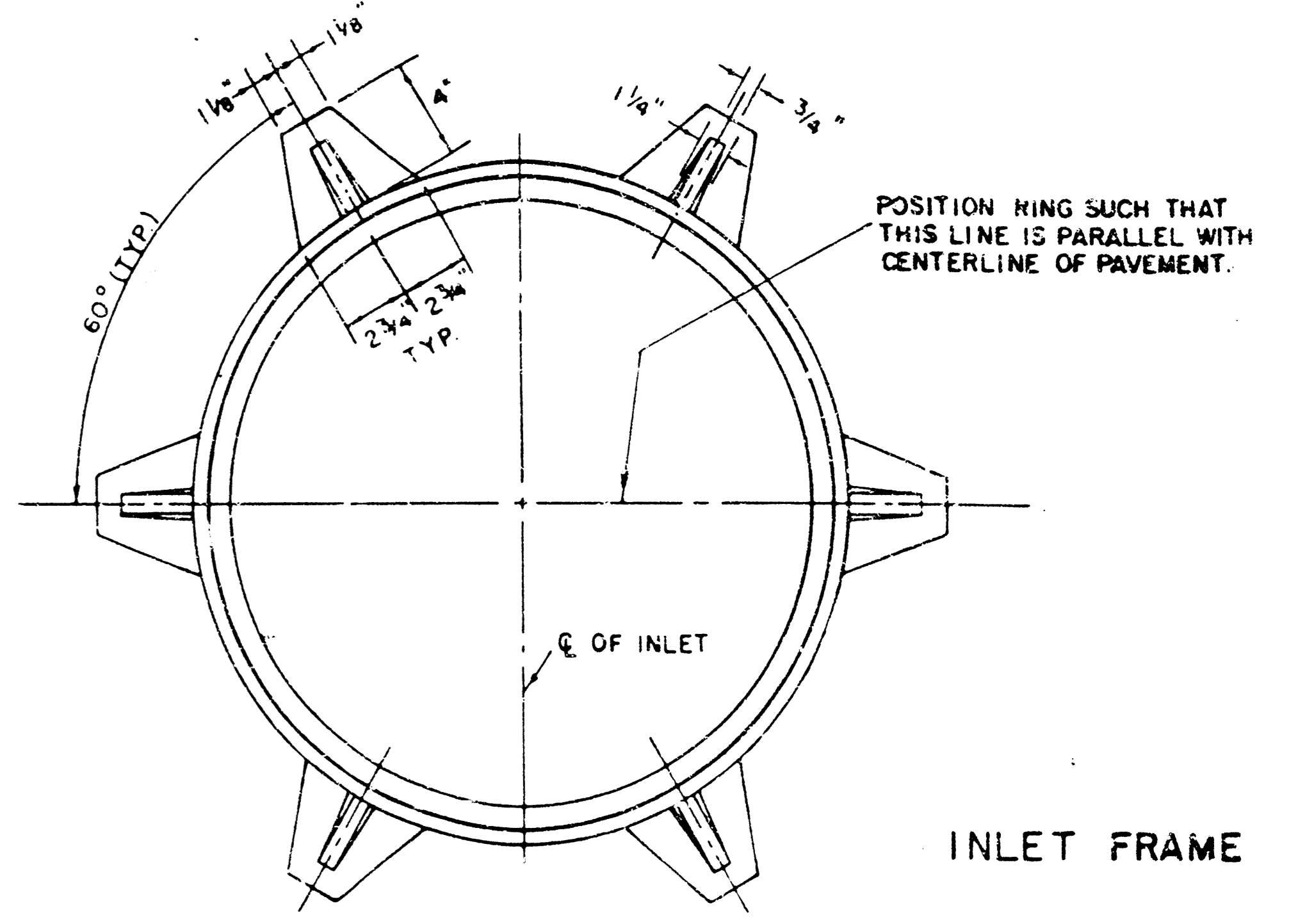
SECTION A-A

NOTE: CONTRACTOR SHALL HAVE THE OPTION OF CONSTRUCTING 8" BRICK MASONRY WALLS BETWEEN THE CONCRETE INLET BASE AND TOP ON THIS INLET WHEN W = 6'4" AND H = 7'0" OR LESS.

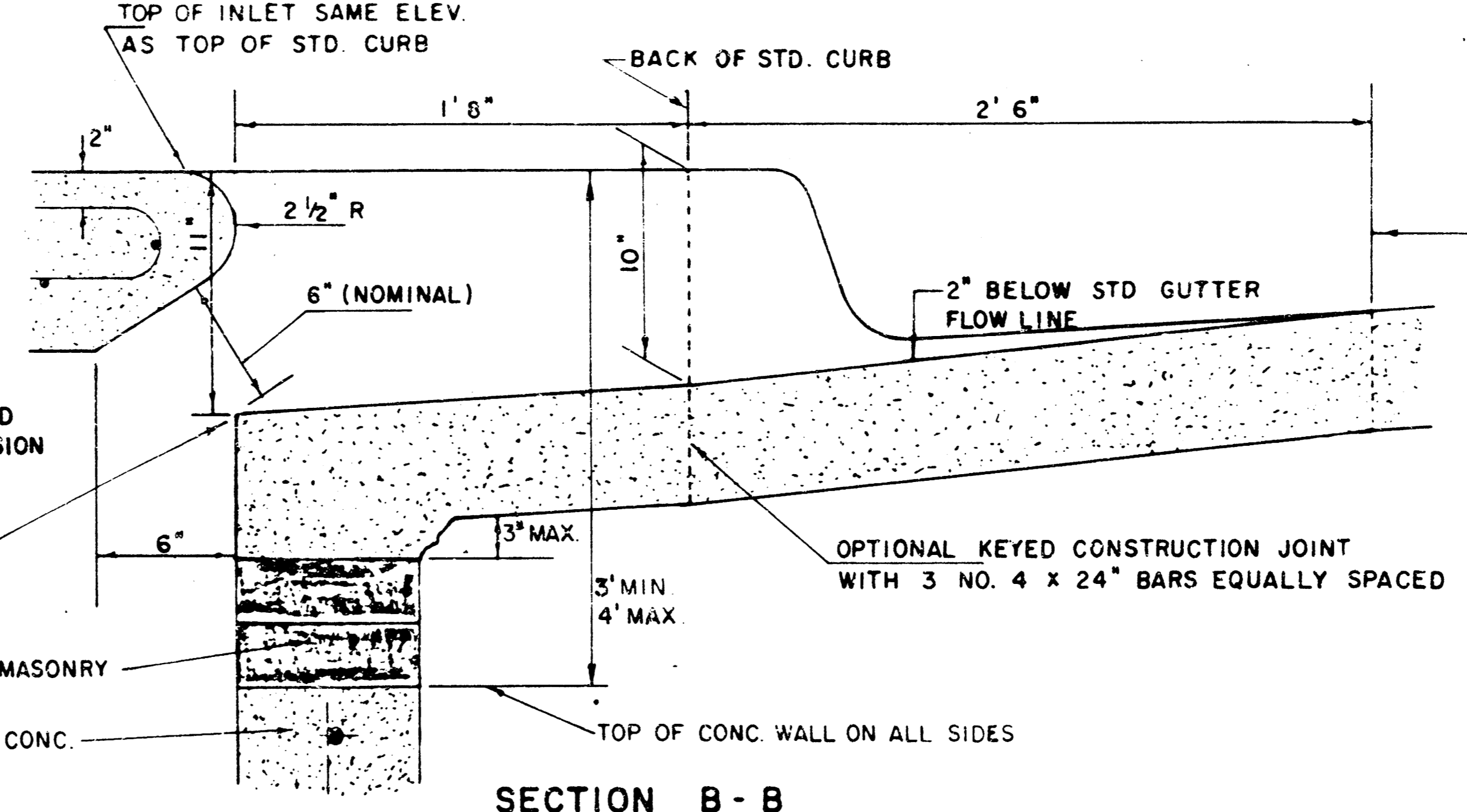
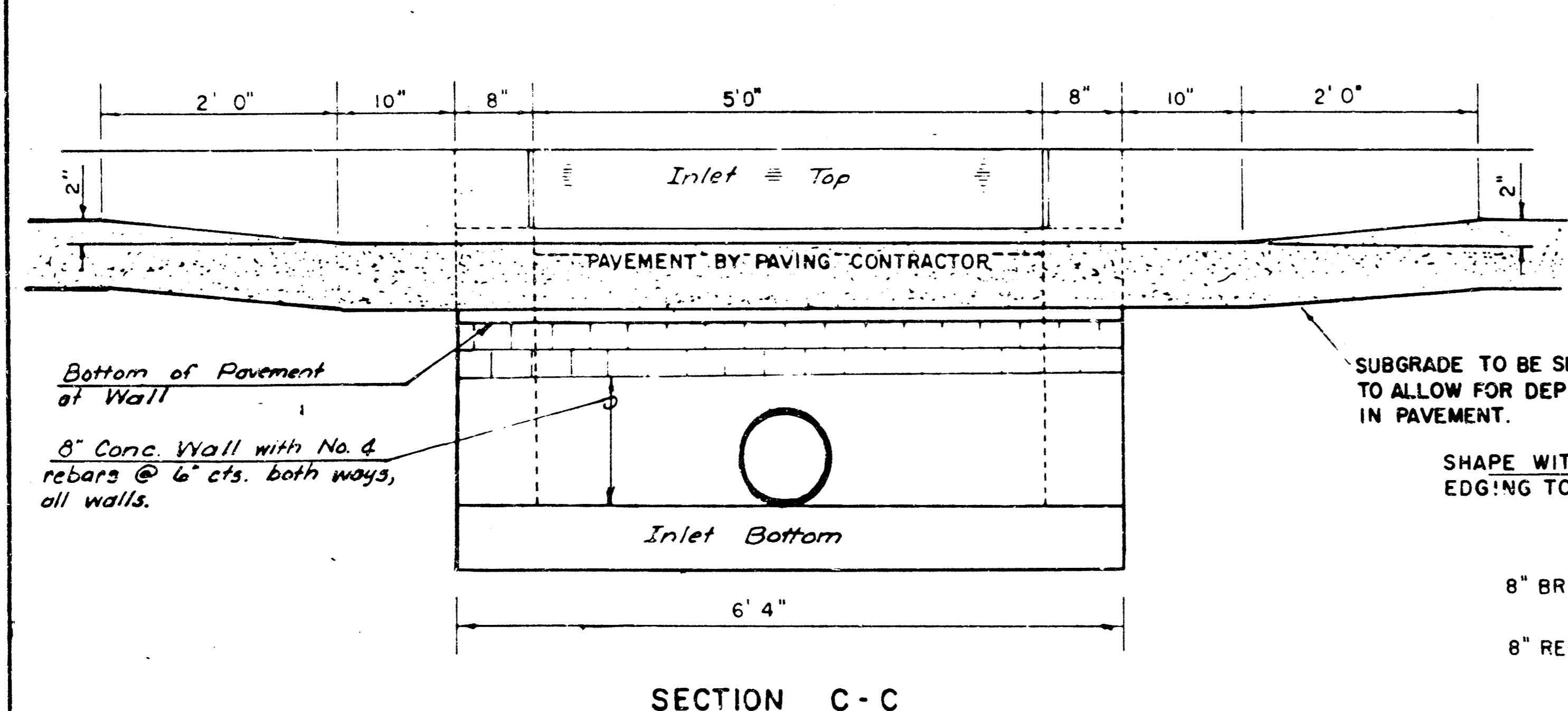
ADDITIONAL CURB AND GUTTER CONSTRUCTION NECESSARY TO CONNECT SET-BACK INLET TO PAVEMENT WILL BE PAID FOR AT THE UNIT PRICE BID FOR EACH INLET HOOKUP.

INLET INVERT SHALL BE SHAPED WITH 8 SACK SAND MIX CONCRETE TO CREATE FLOW CHANNELS AND TO INCREASE HYDRAULIC EFFICIENCY SUCH THAT THE INLET WILL BE SELF-CLEANING BETWEEN ALL INLET AND/OR OUTLET PIPES.

THE ENDS OF ALL PIPES INSTALLED IN INLETS SHALL BE CUT OFF FLUSH WITH THE INSIDE FACE OF THE INLET WALL.



SEE CITY OF WICHITA STANDARD MANHOLE FRAME AND COVER DETAIL SHEET FOR COVER DETAILS TO BE USED WITH INLET FRAME.

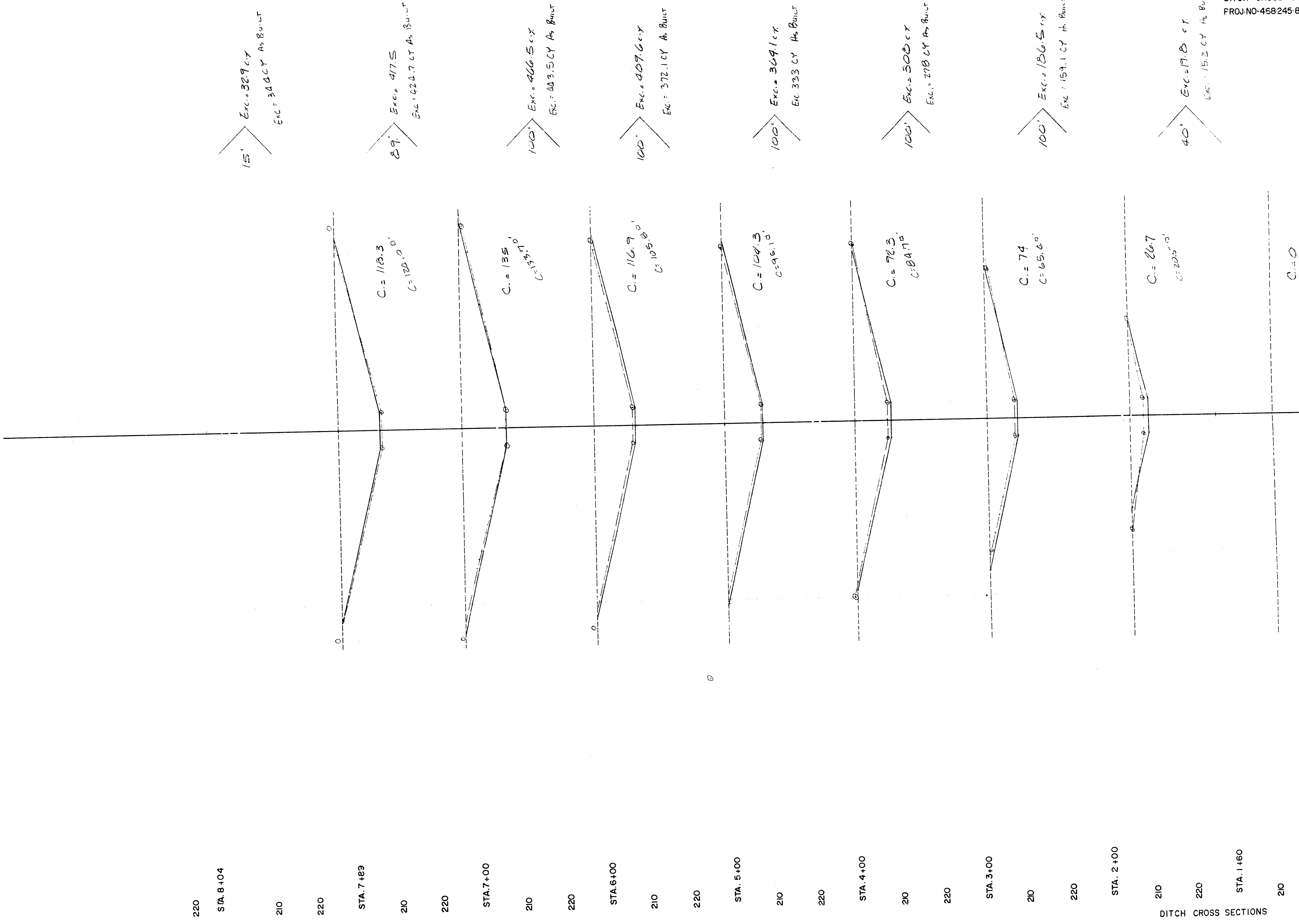


REVISED 12-21-1984

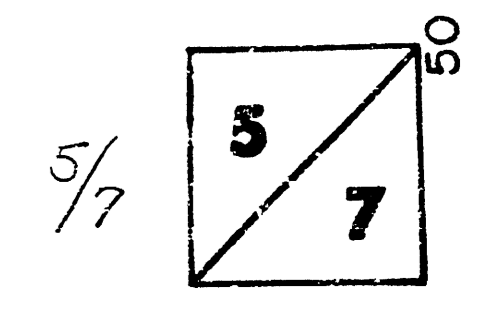
DETAIL STANDARD TYPE IA CURB INLET  
CITY OF WICHITA, KANSAS  
INLET OPENING = 6" x 5'0"

JUNE 1984





TOTAL Exc = 2,204.9 c.y.  
 Total Exc = 1,655.0 c.y. A<sub>BUILT</sub>

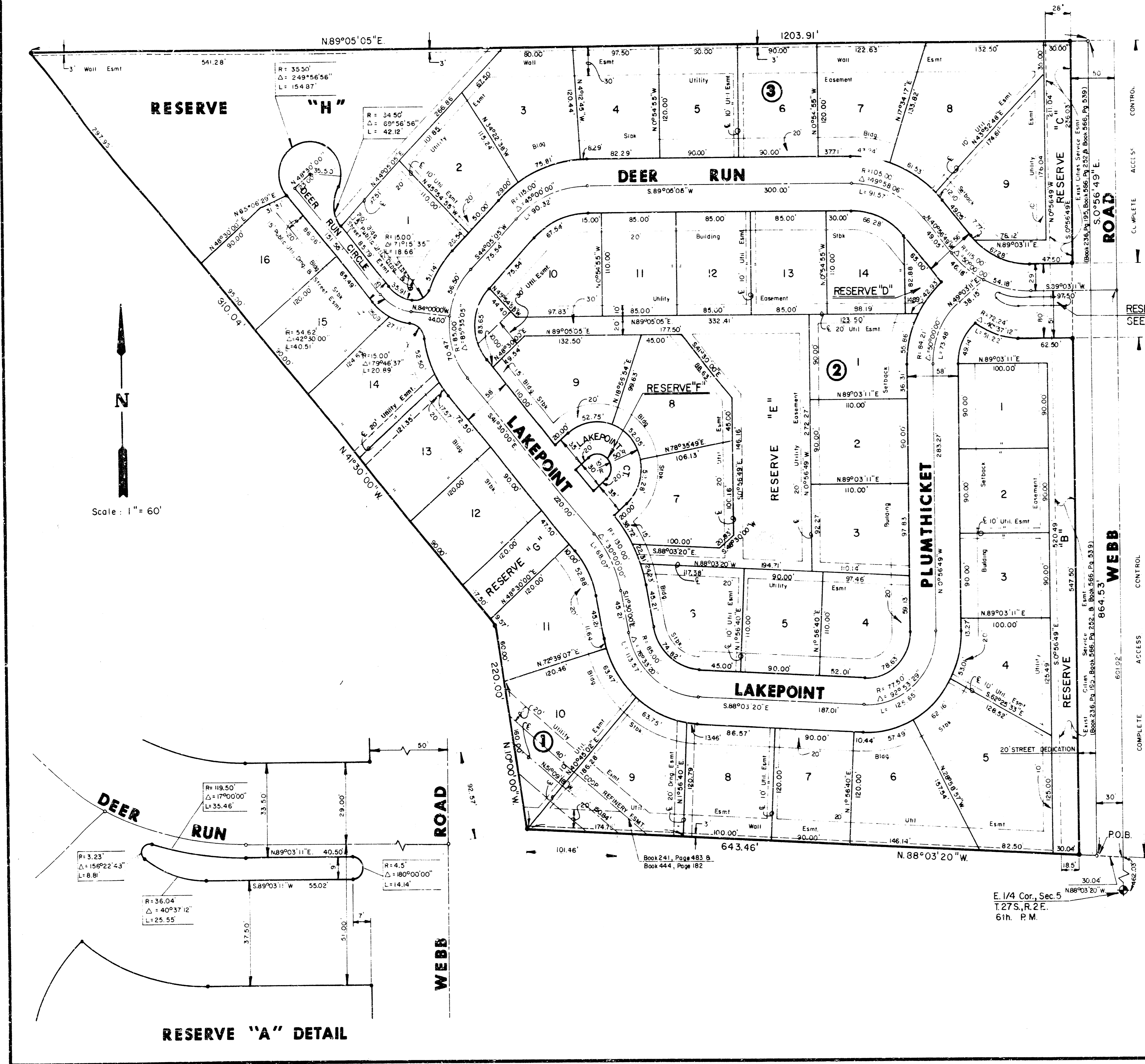


5/7

DITCH CROSS SECTIONS

45  
40  
35  
30  
25  
20  
15  
10  
5  
0  
5  
10  
15  
20  
25  
30  
35  
40  
45

**FINAL PLAT OF  
DEER RUN  
AN ADDITION TO WICHITA, SEDGWICK COUNTY, KANSAS**



Scale: 1" = 60'

**RESERVE "A" DETAIL**

I, Kenneth H. Bengtson, a Civil Engineer in Kansas, do hereby certify that I have been in responsible charge of surveying and platting of "DEER RUN" an addition to Wichita, Sedgwick County, Kansas, into Lots, Blocks, Reserves, and Streets, the same being accurately set forth in the accompanying plat and described herein:

A tract of land lying in the Northeast Quarter, Section 5, Township 27 South, Range 2 East of the 6th P.M., more particularly described as follows:

Commencing at the Southeast corner of said Northeast Quarter; thence N 00° 56' 49" W, 467.03 feet along the East line of said Northeast Quarter; thence N 88° 03' 20" W, 30.04 feet to the point of beginning; thence N 88° 03' 20" W, 643.46 feet; thence N 10° 00' 00" W, 220.00 feet; thence N 41° 30' 00" W, 810.04 feet to a point on the South line of Government, Lot 1; thence N 89° 05' 05" E, 1203.91 feet parallel and 30.00 feet west of the East line of said Northeast Quarter to the point of beginning.

I hereby certify that the details of this plat are correct to the best of my knowledge and belief this 24 day of July, 1986.

*Kenneth H. Bengtson*  
Kenneth H. Bengtson, P.E.  
Mid-Kansas Engineering Consultants, P.A.  
3500 N. Rock Road, Building #800  
Wichita, KS 67226

we, Mellon Bank, N.A., Pittsburgh, Pennsylvania, mortgagee on the above described property, do hereby consent to the plat of "DEER RUN".

MELLON BANK, N.A., Pittsburgh, Pennsylvania

By: \_\_\_\_\_

STATE OF KANSAS )  
SEDGWICK COUNTY )

Be it remembered that on this 24th day of July, 1986, before me a Notary Public in and for said State and County, came Mellon Bank, N.A., Pittsburgh, Pennsylvania, by Paul J. Brown to me personally known to be the same person who executed the foregoing instrument of writing and duly acknowledged the execution of the same. In testimony whereof I have hereunto set my hand and affixed my notarial seal the day and year above written.

*Linda S. Baham*, Notary Public  
My Appointment Expires: 2-9-90

This plat of "DEER RUN" has been submitted to and approved by the Wichita-Sedgwick County Metropolitan Area Planning Commission, Wichita, Kansas.

Dated this 12th day of June, 1986.

WICHITA-SEDGWICK COUNTY METROPOLITAN AREA PLANNING COMMISSION

*David Bayouth*, Vice-Chairman  
David Bayouth

*Michael E. Lyndeback*, Secretary  
Michael E. Lyndeback

This plat approved and all dedications shown hereon, if any, accepted by the City Commission of the City of Wichita, Kansas, this 23 day of September, 1986.

*Tony Casado*, Mayor  
Tony Casado

*Donald C. Gistick*, City Clerk  
Donald C. Gistick

Entered on transfer record this \_\_\_ day of \_\_\_\_\_, 1986.

Don Wright, County Clerk

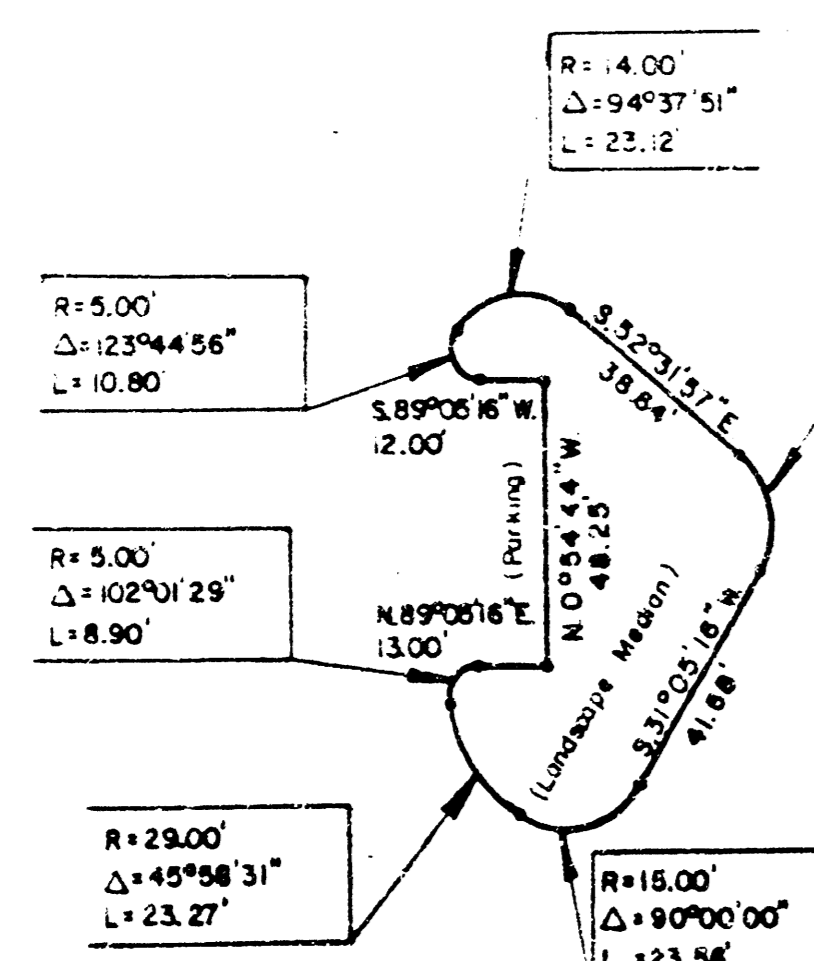
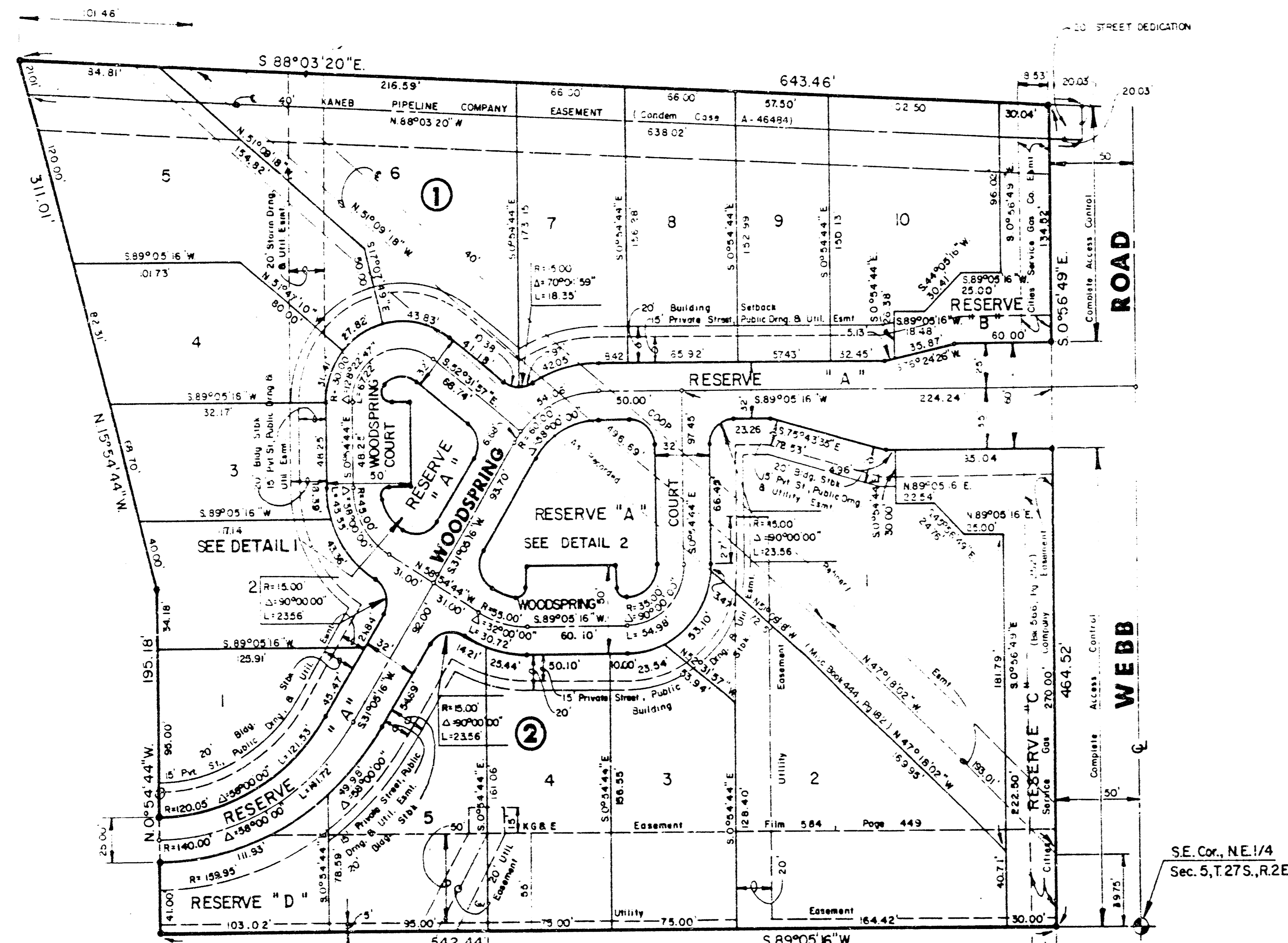
STATE OF KANSAS )  
SEDGWICK COUNTY )

Be it remembered that on this 24th day of July, 1986, before me a Notary Public in and for said State and County, came Slawson Investment Corporation, by Larry A. Chambers, Vice President, to me personally known to be the same person who executed the foregoing instrument of writing and duly acknowledged the execution of the same. In testimony whereof I have hereunto set my hand and affixed my notarial seal the day and year above written.

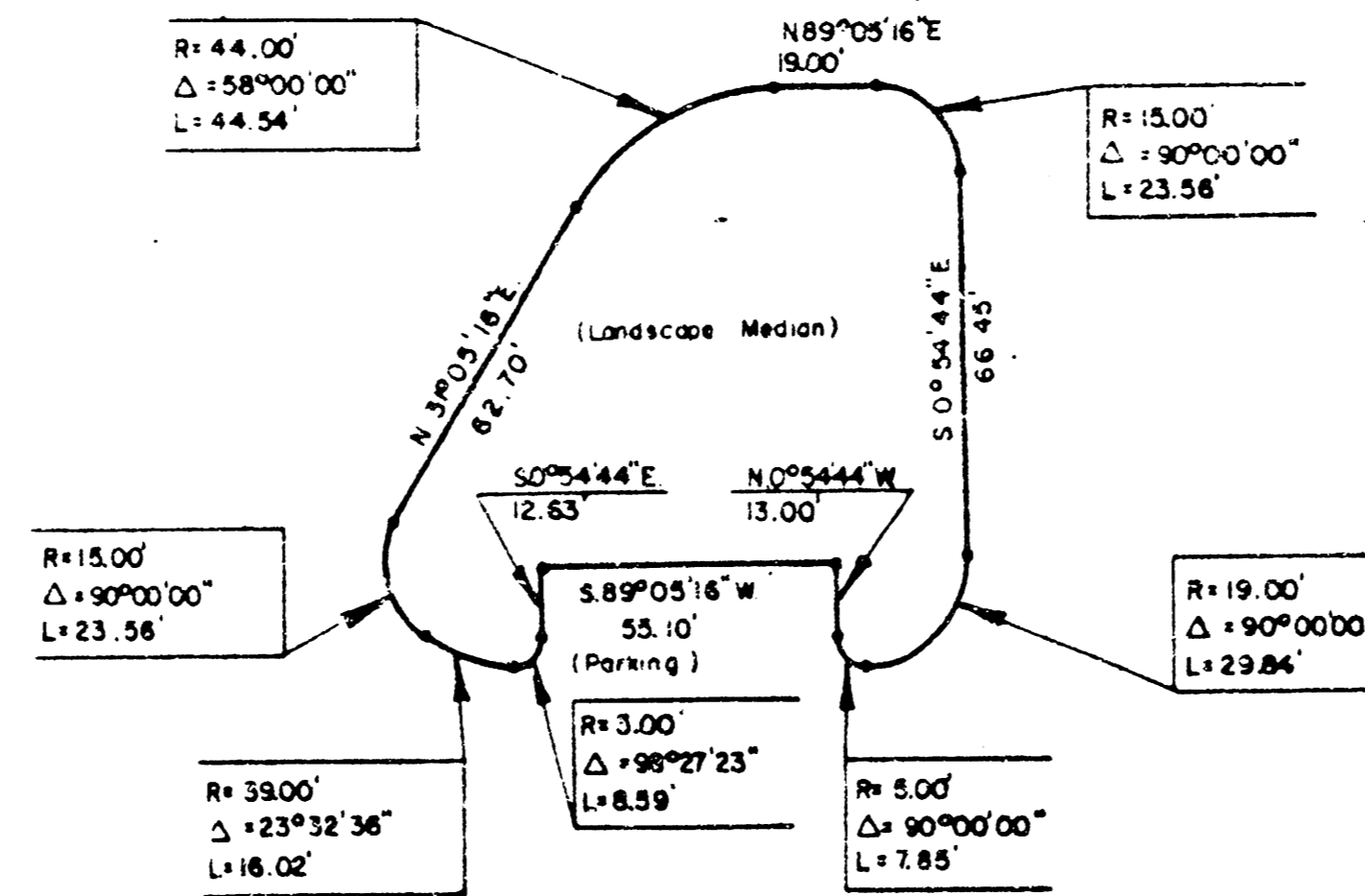
*Linda S. Baham*, Notary Public  
My Appointment Expires: 2-9-90

Pat Kettler, Register of Deeds  
Ed Kesa, Deputy

# FINAL PLAT OF WOODSPRING 3 RD. AN ADDITION TO WICHITA, SEDGWICK COUNTY, KANSAS



RESERVE "A" DETAIL 1



RESERVE "A" DETAIL 2

I, Kenneth H. Bengtson, a Civil Engineer in Kansas, do hereby certify that I have been in responsible charge of surveying and platting of "WOODSPRING 3RD" an addition to Wichita, Sedgwick County, Kansas, into Lots, Blocks, Reserves, and Streets, the same being accurately set forth in the accompanying plat and described herein:

A tract of land lying in the Northeast Quarter, Section 5, Township 27 South, Range 2 East from the 6th P.M., more particularly described as follows:

A replat of Blocks 4 and 5 and that part of Reserve B lying between said Block 4 and 5 of Woodspring, an addition to Wichita, Sedgwick County, Kansas also including:

Beginning at the Northeast corner of Woodspring; thence N 88° 03' 20" W, 643.46 feet along the North line of said Woodspring, said line also being the centerline of a 40.00 foot KANE EASEMENT, as condemned in case A-46484; thence N 15° 54' 44" W, 21.01 feet; thence S 68° 03' 20" E, 643.46 feet along the North line of said 40.00 foot KANE EASEMENT; thence S 0° 56' 49" E, 20.03 feet to the point of beginning.

All lots, blocks, reserves and platted street, drainage and utility easements within the above described property are being vacated and replatted by virtue of K.S.A. 12-512(b).

I hereby certify that the details of this plat are correct to the best of my knowledge and belief this 16th day of September, 1986.

*Kenneth H. Bengtson*  
Kenneth H. Bengtson, P.E.  
Wichita-Kansas Engineering Consultants, P.A.  
1500 N. Rock Road, Bldg. 800  
Wichita, KS 67226

Know all men by these presents that we, the undersigned property owners of the land as set forth in the Civil Engineer's Certificate, have caused the same to be surveyed and platted into lots, blocks, reserves and a street, the same to be known as "WOODSPRING 3RD", an addition to Wichita, Sedgwick County, Kansas. Easements for the construction and maintenance of public utilities and drainage, as indicated on the accompanying plat, are hereby granted to the City of Wichita. The street is hereby dedicated to and for the use of the public. All reserves are platted for construction and maintenance of public utilities, except that portion of Reserve A within the 50.00 foot KANE EASEMENT, and open spaces. Reserve A is also platted for parking, private streets, drainage, and landscaping medians. Reserves B and C are platted for walls and entry monuments. Reserves B, C, & D are also platted for landscaping. All reserves shall be owned and maintained by the Woodspring 3rd Homeowners Association. All abutters rights of access to or from Webb Road, over and across the East line of Reserves B and C, are hereby granted to the City of Wichita, Kansas.

SLAWSON INVESTMENT CORPORATION

By: *Larry A. Chambers*  
Larry A. Chambers, Vice President

STATE OF KANSAS )  
                          ) SS:  
SEDGWICK COUNTY)

Be it remembered that on this 21st day of July, 1986, before me a Notary Public in and for said State and County, came Slawson Investment Corporation, by Larry A. Chambers, Vice President, to me personally known to be the same person who executed the foregoing instrument of writing and duly acknowledged the execution of the same. In testimony whereof I have hereunto set my hand and affixed my notarial seal the day and year above written.

*Linda S. Graham*, Notary Public  
My Appointment Expires: 2-9-90

we, Mellon Bank, N.A., Pittsburgh, Pennsylvania, mortgagee on the above described property, do hereby consent to the plat of "WOODSPRING 3RD".

MELLON BANK, N.A., Pittsburgh, Pennsylvania  
By: *Paul J. Barrow*

STATE OF KANSAS )  
                          ) SS:  
COUNTY OF SEDGWICK)

Be it remembered that on this 7th day of August, 1986, before me, a Notary Public in and for said State and County, came Mellon Bank, N.A., Pittsburgh, Pennsylvania, by *Paul J. Barrow* to me personally known to be the same person who executed the foregoing instrument of writing and duly acknowledged the execution of the same. In testimony whereof I have hereunto set my hand and affixed my notarial seal the day and year above written.

*Linda S. Graham*, Notary Public  
My Appointment Expires: 2-9-90

This plat of "WOODSPRING 3RD" has been submitted to and approved by the Wichita-Sedgwick County Metropolitan Area Planning Commission, Wichita, Kansas.

Dated this 15th day of May, 1986.

WICHITA-SEDGWICK COUNTY METROPOLITAN AREA PLANNING COMMISSION

*David Bayoum*, Vice-Chairman  
*Michael E. Lindbeck*, Secretary

This plat approved and all dedications shown hereon, if any, accepted by the City Commission of the City of Wichita, Kansas, this 31st day of Sept, 1986.

*Tony Casajo*, Mayor  
*Donald C. Gistick*, City Clerk

Entered on transfer record this 16th day of Oct, 1986.  
*Don Wright*, County Clerk

STATE OF KANSAS )  
                          ) SS:  
SEDGWICK COUNTY)

Be it certified that this instrument was filed for record in the Register of Deeds office this 7th day of October, 1986.

*Pat Kettler*, Register of Deeds  
*Ed Resa*, Deputy

