

STORM SEWER PLANS FOR COTTONWOOD VILLAGE EIGHTH

PHASE I
S.W.S. NO. 357
PROJECT NO.

468-76-245-81813-000-000-001

CITY OF WICHITA, KANSAS
MICHAEL E. LINDEBAK, CITY ENGINEER
MARCH, 1989
INDEX NO. 601005

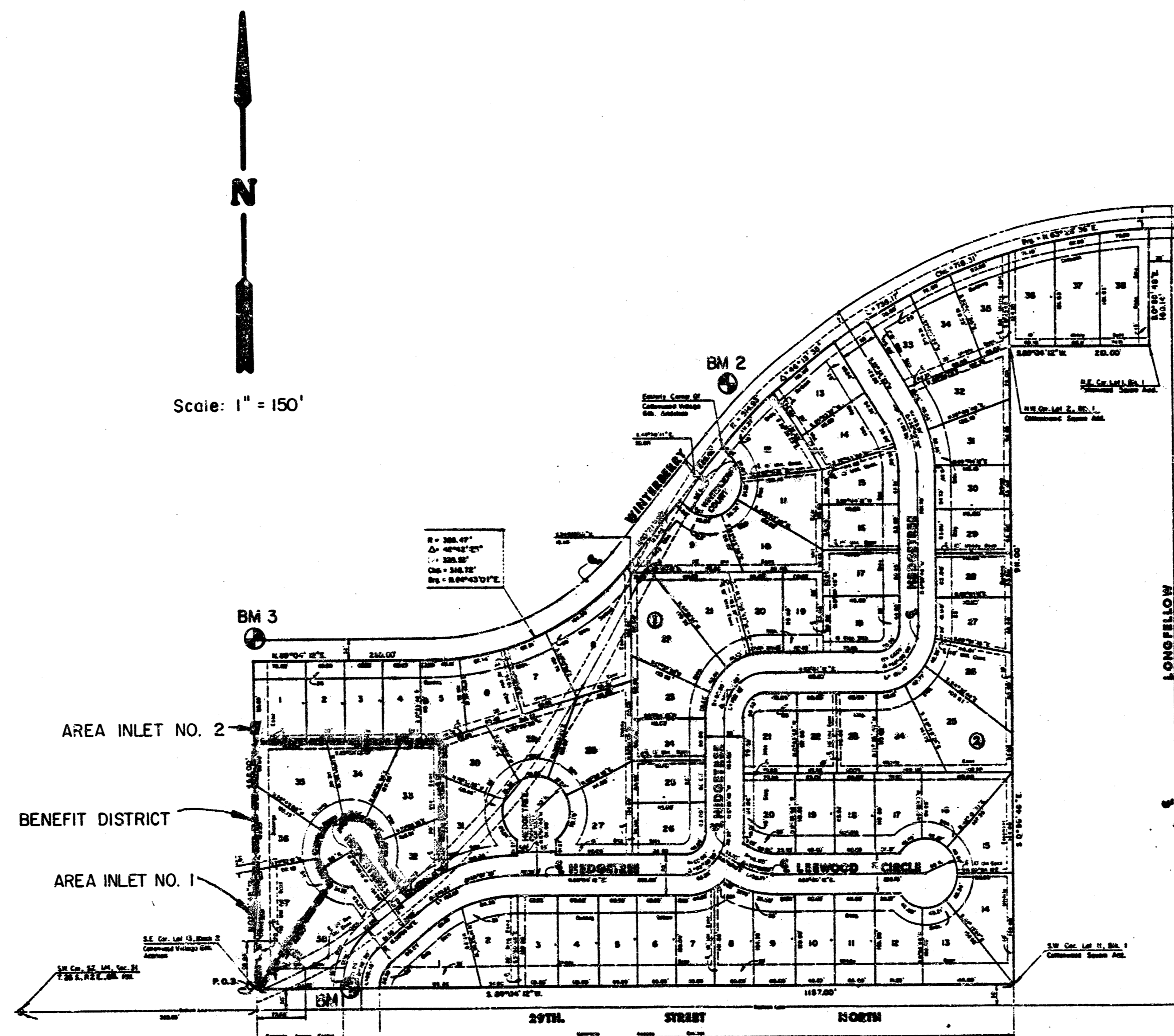
GENERAL NOTES

- THE CONTRACTOR SHALL BE RESPONSIBLE FOR PRESERVING PROPERTY IRONS. THE CONTRACTOR SHALL BE REQUIRED TO RE-ESTABLISH ANY PROPERTY IRONS WHICH ARE DAMAGED OR DESTROYED BY HIS CONSTRUCTION OPERATIONS. SUCH IRONS SHALL BE RE-ESTABLISHED BY A LICENSED LAND SURVEYOR IN ACCORDANCE WITH STATE LAWS.
- THE TOPS OF AREA INLET(S) SHALL BE SET AS PER THESE PLANS.
- ALL CONCRETE SHALL BE STANDARD PAVING MIX UNLESS OTHERWISE NOTED.
- UNDERGROUND UTILITY SERVICE LINES AND OVERHEAD UTILITY POLE LINES ARE TO BE ADJUSTED AS NECESSARY BY OTHERS PRIOR TO CONSTRUCTION UNLESS THE PLANS SPECIFICALLY CALL FOR THEIR ADJUSTMENT BY THE CONTRACTOR OR UNLESS THE PLANS SPECIFICALLY IDENTIFY A UTILITY TO BE ADJUSTED BY ITS OWNER DURING CONSTRUCTION. EXISTING UTILITIES AND THEIR LOCATION AS SHOWN ON THE PLANS, REPRESENT THE BEST INFORMATION OBTAINABLE FOR DESIGN. LOCATION INFORMATION HAS BEEN OBTAINED FROM THE VARIOUS UTILITY COMPANIES AND IS EITHER FROM COMPANY RECORD DRAWINGS OR COMPANY PROVIDED FIELD LOCATIONS. THE CONTRACTOR WILL BE REQUIRED TO WORK AROUND EXISTING UTILITIES WITHIN THE RIGHT-OF-WAY WHICH DO NOT CONFLICT WITH PROPOSED CONSTRUCTION.
- NOTE: NOTIFY THE FOLLOWING COMPANIES PRIOR TO ANY EXCAVATION:

BELL TELEPHONE COMPANY 1-316-571-2115
CABLEVISION 262-4270 or 263-2028
KPAL GAS SERVICE COMPANY 263-7511
KANSAS GAS & ELECTRIC 264-1141
KANSAS ONE-CALL 1-800-344-7233
CITY OF WICHITA WATER DEPT. 268-4908
CITY OF WICHITA SEWER DEPT. 268-4071

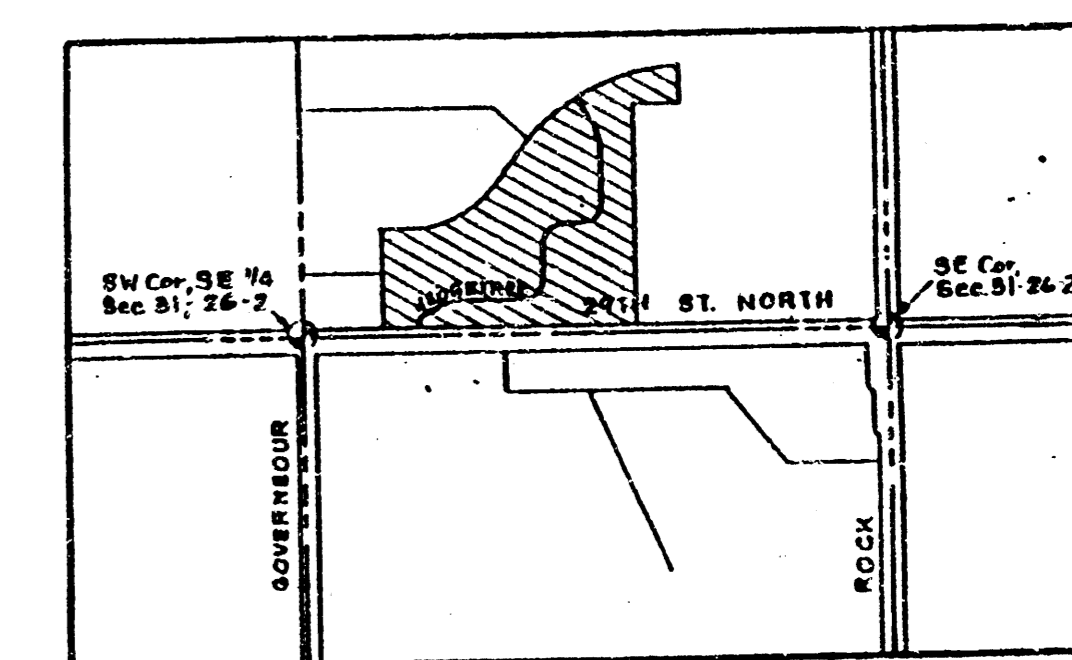
BENCH MARKS

- B.M. #1 "□" Cut on top of curb on North end of Northwest return at Hedgetree and 29th Street North. Elev.=189.43
- B.M. #2 "x" on top of curb and centerline of approach walk at 7500 Winterberry. Elev.=196.925
- B.M. #3 "□" Cut on Southeast corner of curb inlet at Northwest corner of Cottonwood Village 8th Add. Elev.=188.85



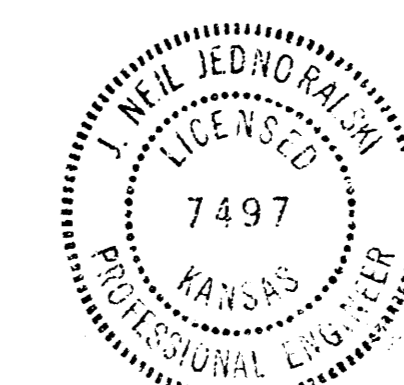
INDEX TO DRAWINGS

| SHEET NO. | DESCRIPTION |
|-----------|-----------------------------------|
| 1 | TITLE SHEET |
| 2 | PLAN & PROFILE |
| 3 | SPEC. REINF. CONC. MANHOLE DETAIL |
| 4 | FINAL PLAT |



LOCATION MAP

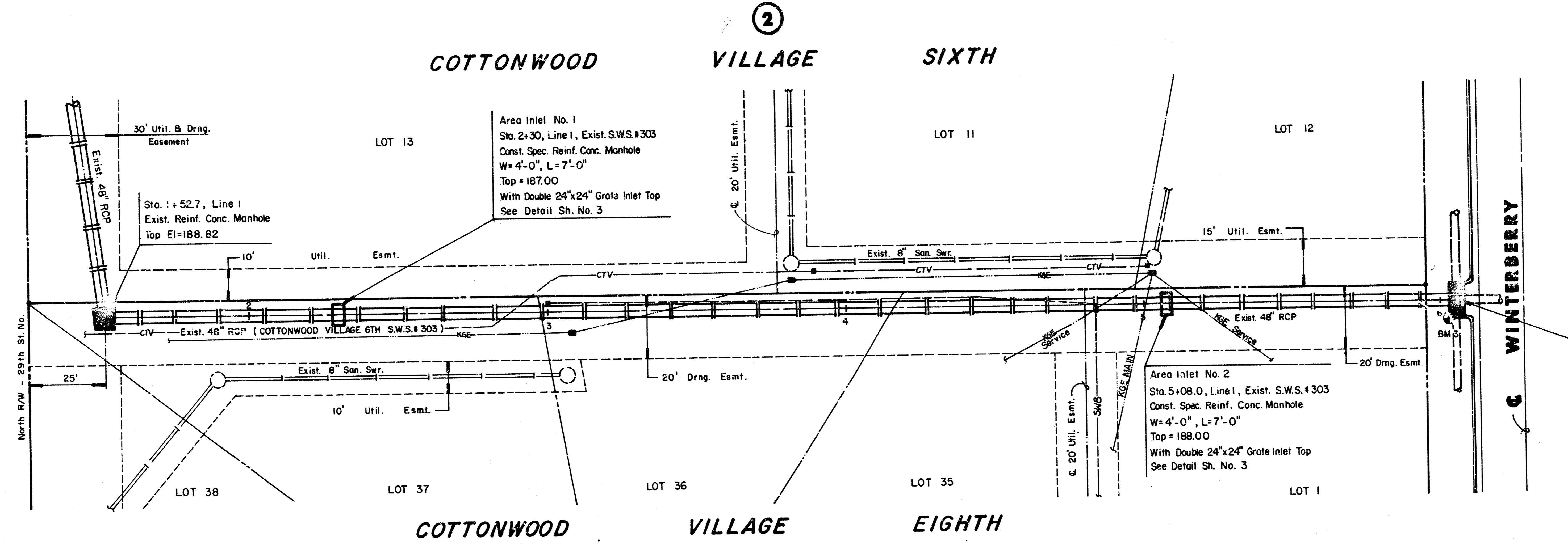
*Booked
7/89
MG 5190*



| | | |
|---|--|--|
| | COTTONWOOD VILLAGE EIGHTH (PHASE I) | Design: JUNJ Drawn by: DPR Checked by: |
| | STORM SEWER PLANS | Date: MARCH 1989 Job no: |
| MID-KANSAS ENGINEERING CONSULTANTS PA 3500 NORTH ROCK ROAD BUILDING #800 WICHITA, KANSAS 67226 | | Sheet: 1 of: 4 |

MKEC Proj. No. 88-05-113.D

FILMED FROM THE BEST AVAILABLE COPY

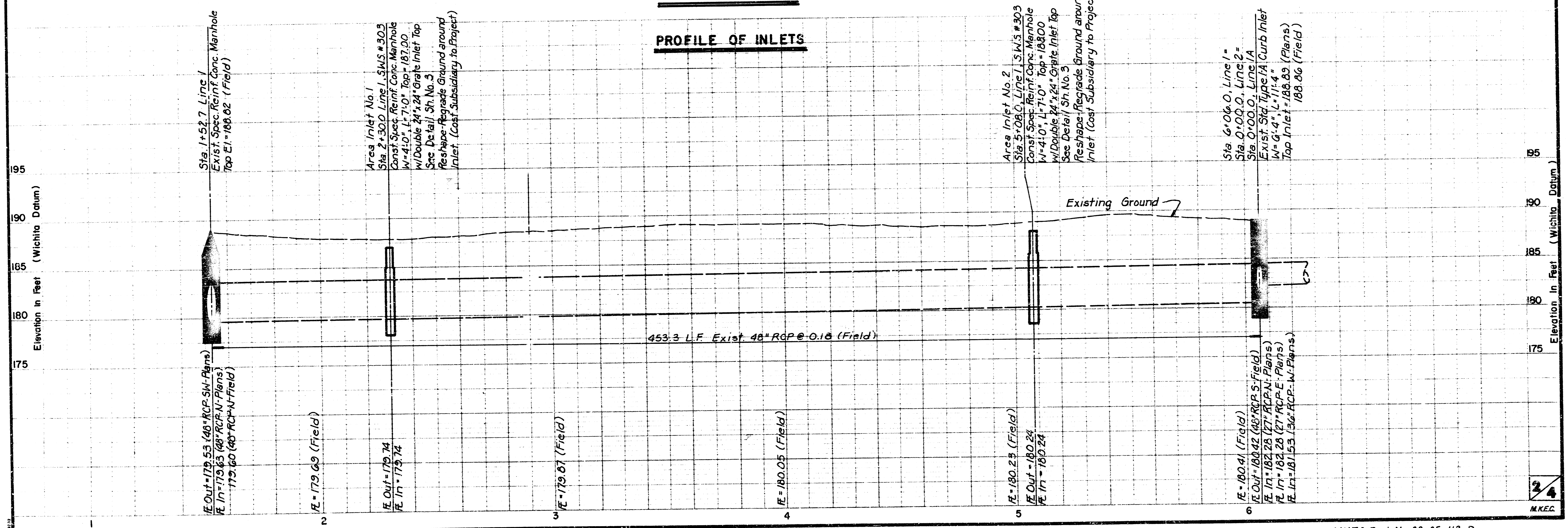


Scale: 1" = 20' Horiz.
 1" = 5' Vert.

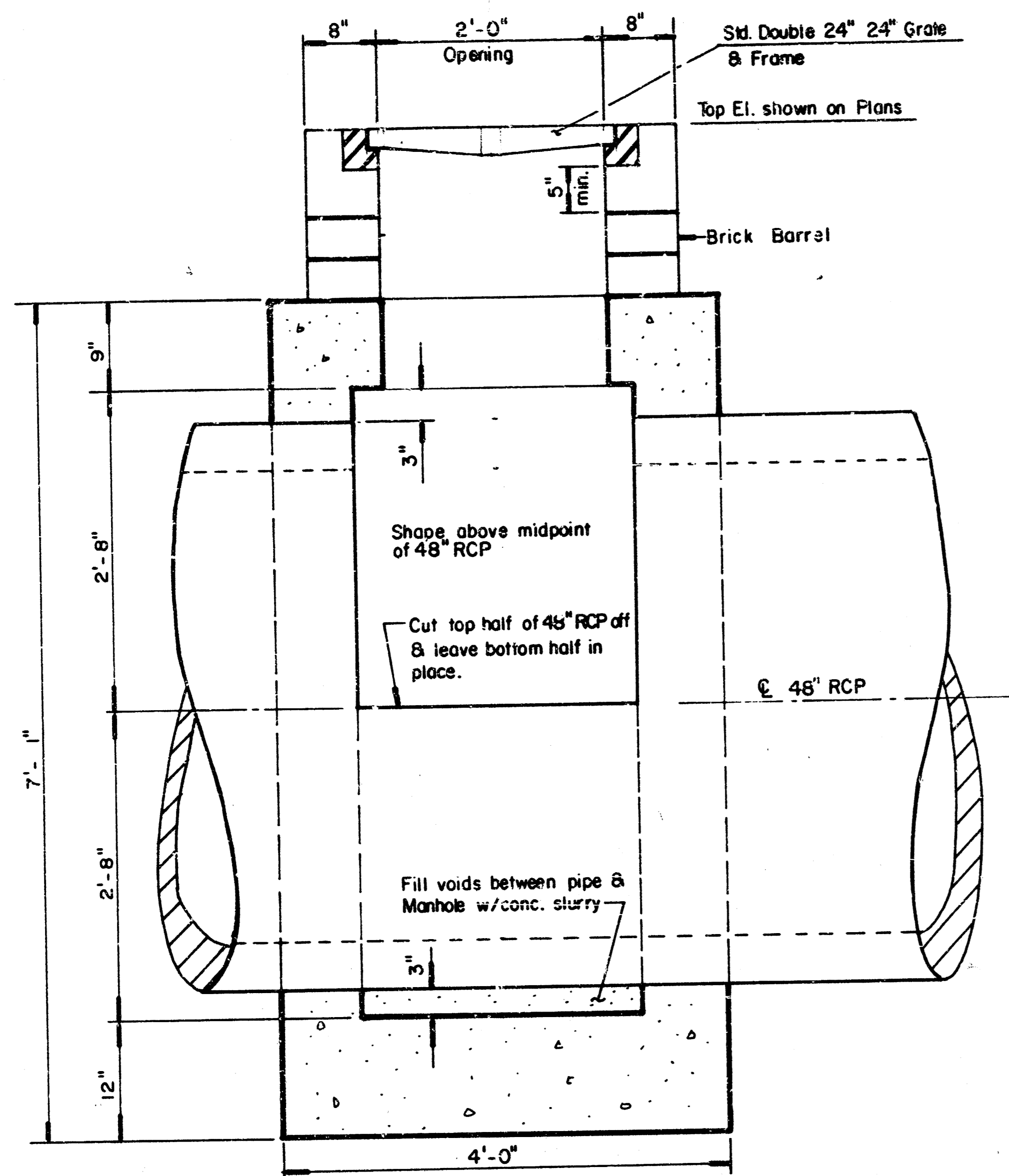
Sta. 6+06.0, Line 1 =
 Sta. 0+00.0, Line 2 =
 Sta. 0+00.0, Line 1A
 Exist. Std. Type IA Curb Inlet
 W=6'-4", L=11'-4"
 Top Inlet = 188.86

PLAN OF INLETS

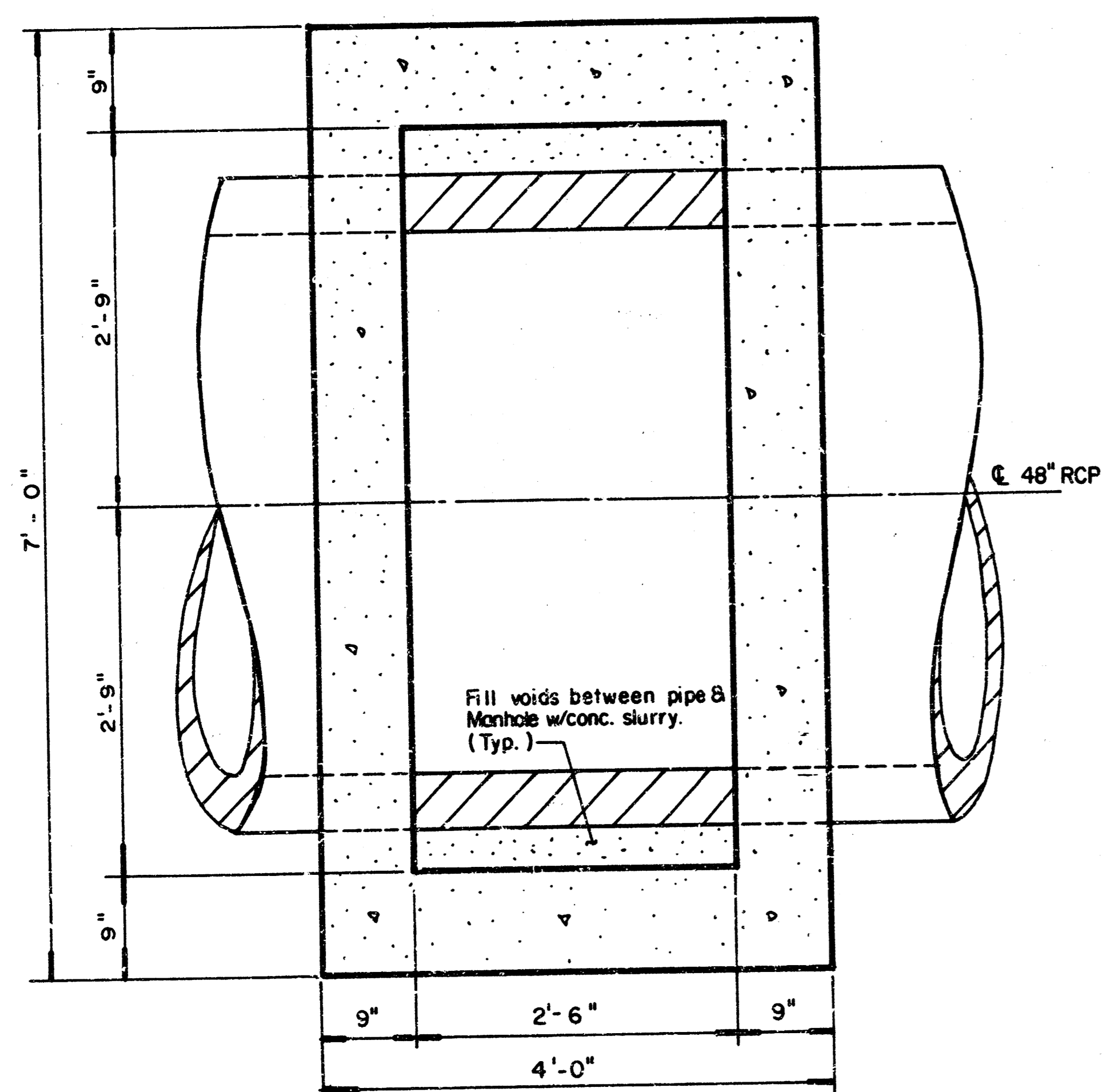
PROFILE OF INLETS



FILMED FROM THE BEST AVAILABLE COPY...

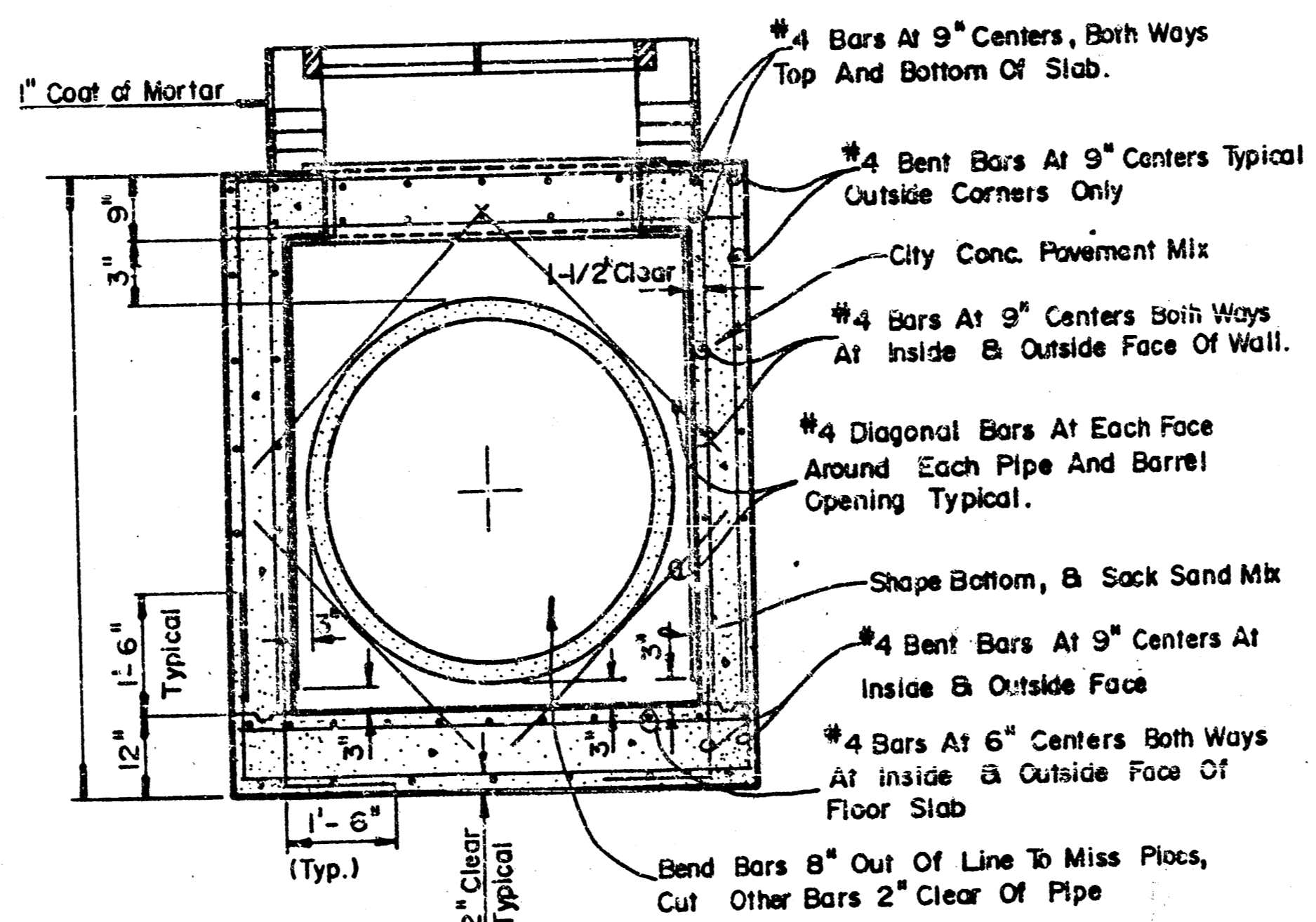


SECTION

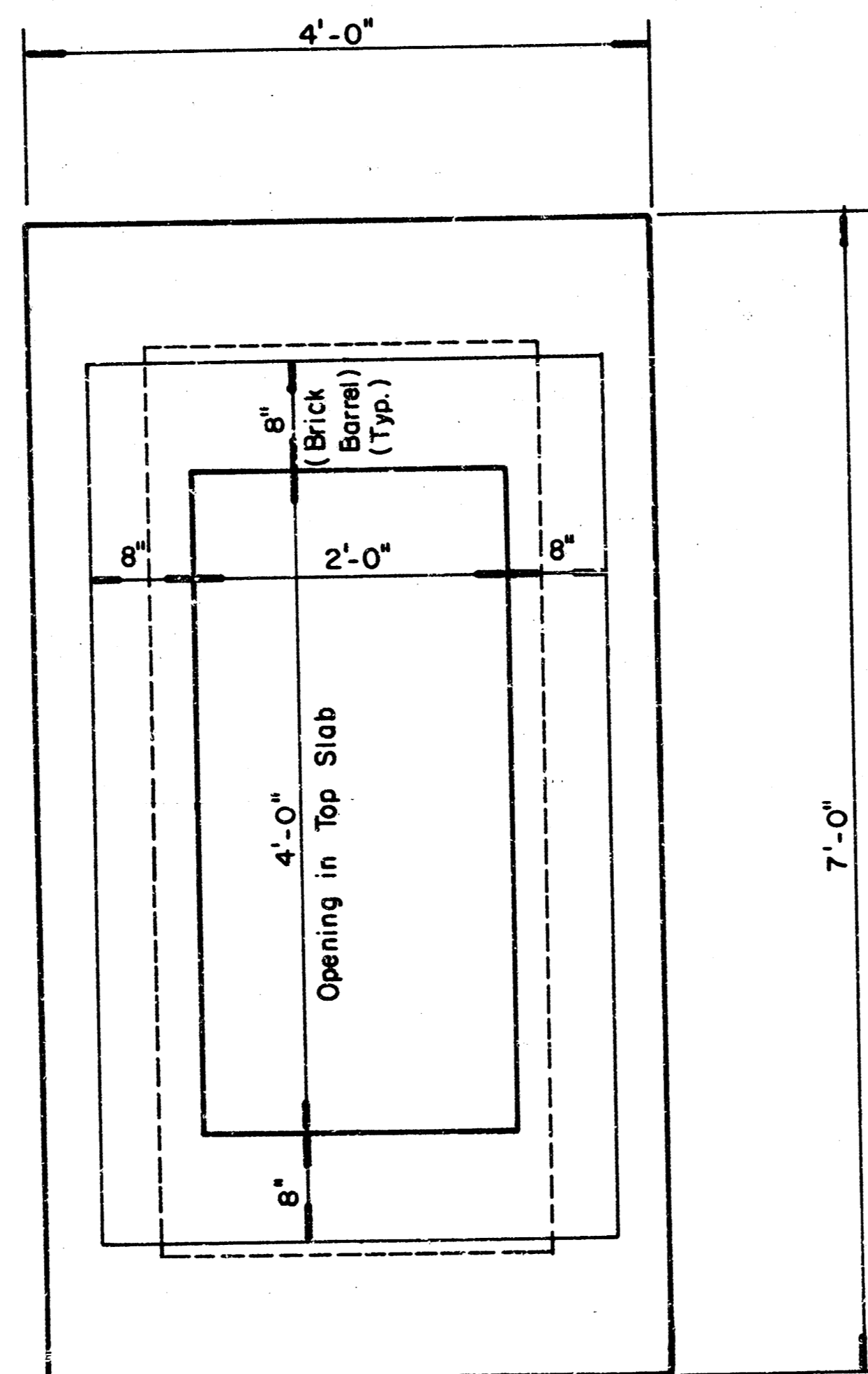


PLAN VIEW

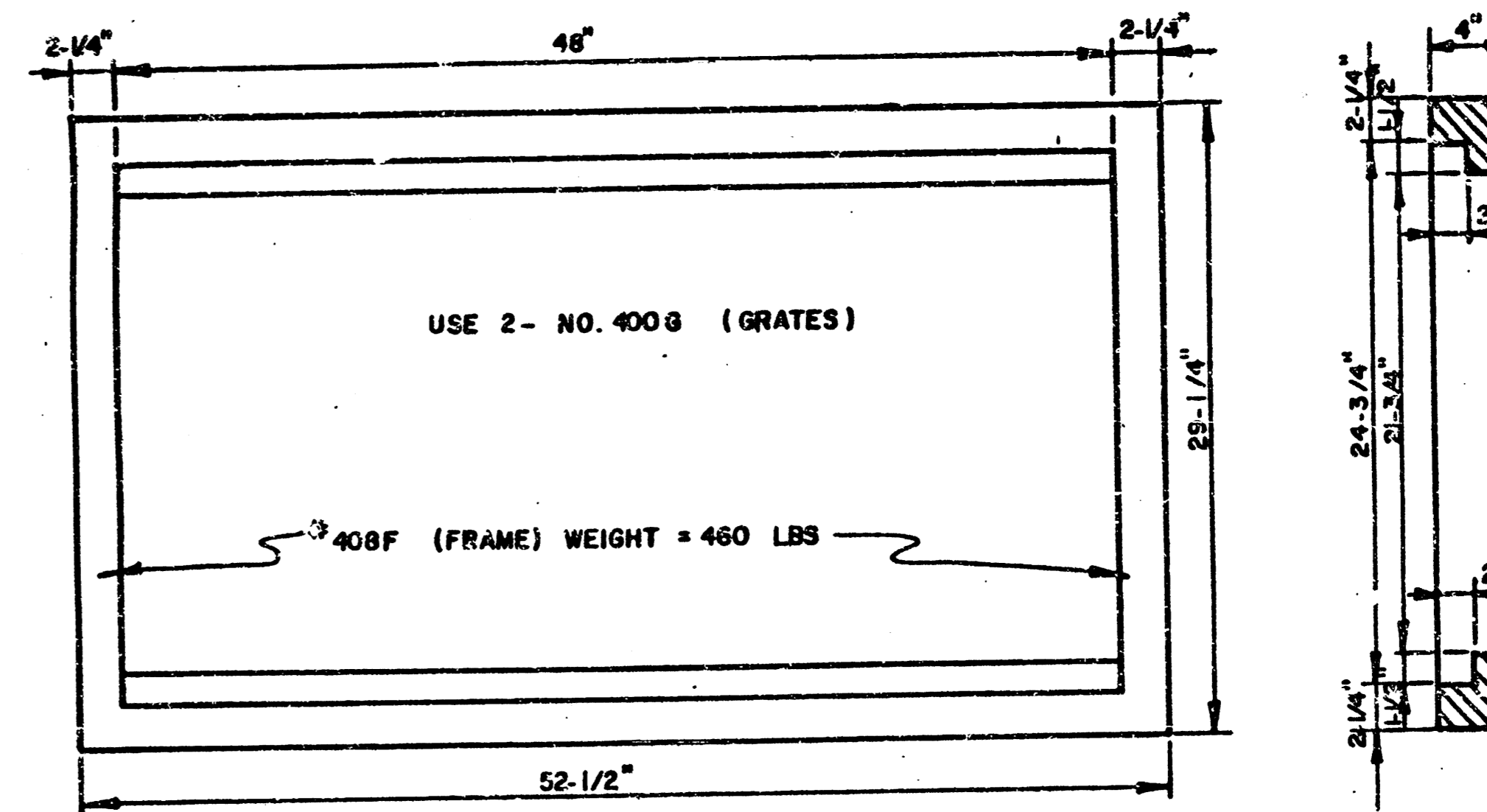
STA. 2+30 & STA. 5+08, LINE 1, S.W.S.# 303



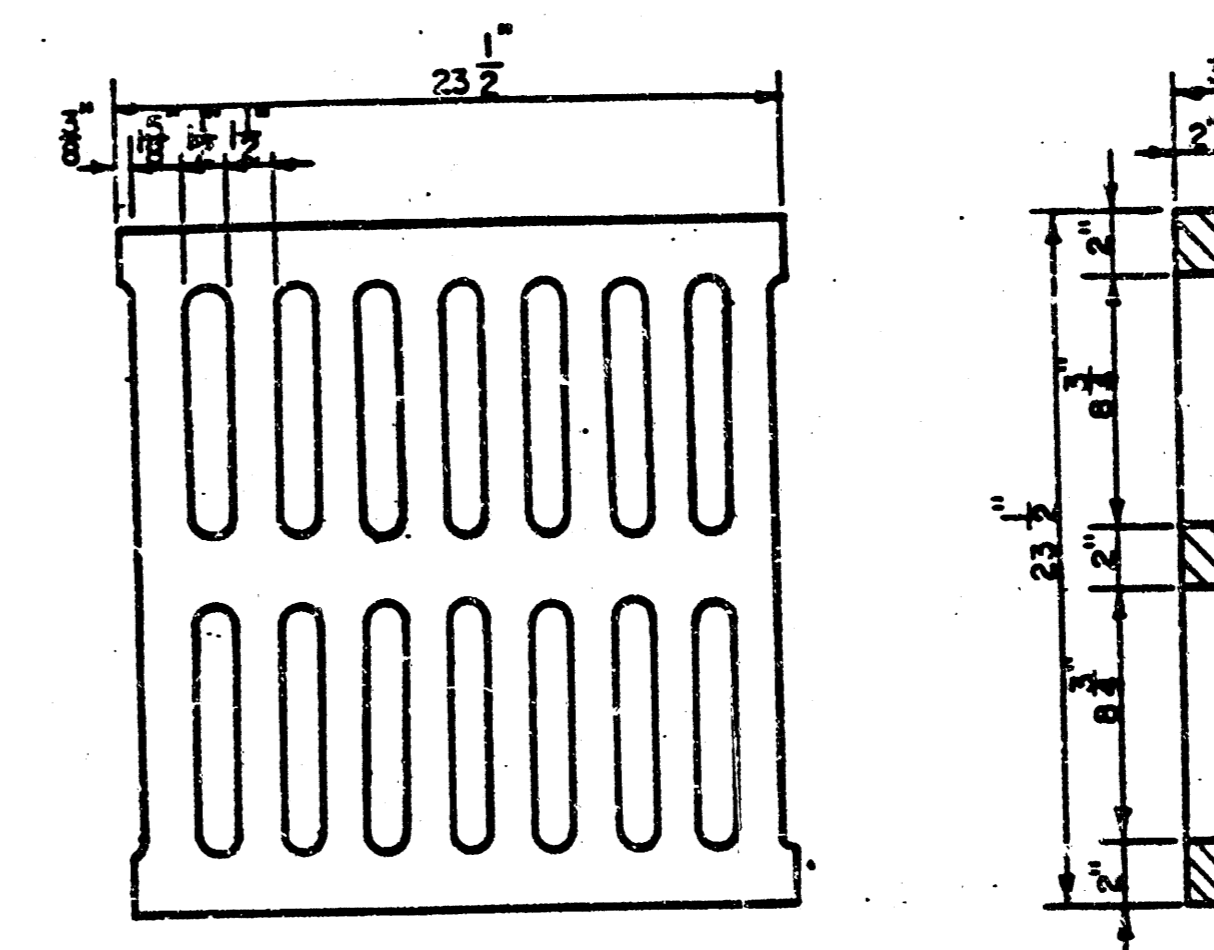
**SECTION
SHOWING REINFORCING**



**PLAN VIEW
TOP SLAB & MASONRY STACK**



DOUBLE 24"x24" FRAME DETAIL



24"x24" GRATE DETAIL

THE FLOORS OF ALL MANHOLES SHALL BE SHAPED WITH FLOW CHANNELS SUCH THAT THE MANHOLES WILL BE SELF CLEANING AND FREE OF AREAS WHERE SEDIMENT COULD BE DEPOSITED AS FLOWS MOVE THROUGH THE MANHOLE FROM THE INLET PIPES TO THE OUTLET PIPES. FLOW CHANNELS SHALL BE FORMED TO MATCH THE BOTTOM HALVES OF THE INFLOW AND OUTFLOW PIPES. MANHOLE FLOORS SHALL HAVE SLOPES OF 3 INCHES PER FOOT IN THE AREAS OUTSIDE OF THE FLOW CHANNELS - SLOPED TOWARD THE FLOW CHANNELS.

| | | |
|---|--|---|
| | COTTONWOOD VILLAGE EIGHTH (PHASE 1) | Design: JHJ Drawn by: DPR Checked by: |
| | AREA INLET DETAILS | Date: MARCH 1999 Job No. |
| MID-KANSAS ENGINEERING CONSULTANTS PA 3500 NORTH ROCK ROAD BUILDING #800 WICHITA, KANSAS 67226 | | Sheet: 3 of: 4 |

MKEC Proj. No. 88-05-113 D

FILMED FROM THE BEST AVAILABLE COPY

FINAL PLAT OF COTTONWOOD VILLAGE EIGHTH

AN ADDITION TO WICHITA, SEDGWICK COUNTY, KANSAS



Scale: 1" = 60'

R = 386.47'
Δ = 48°42'23"
L = 328.53'
Chd. = 318.72'
Brq. = N.64°43'01"E.

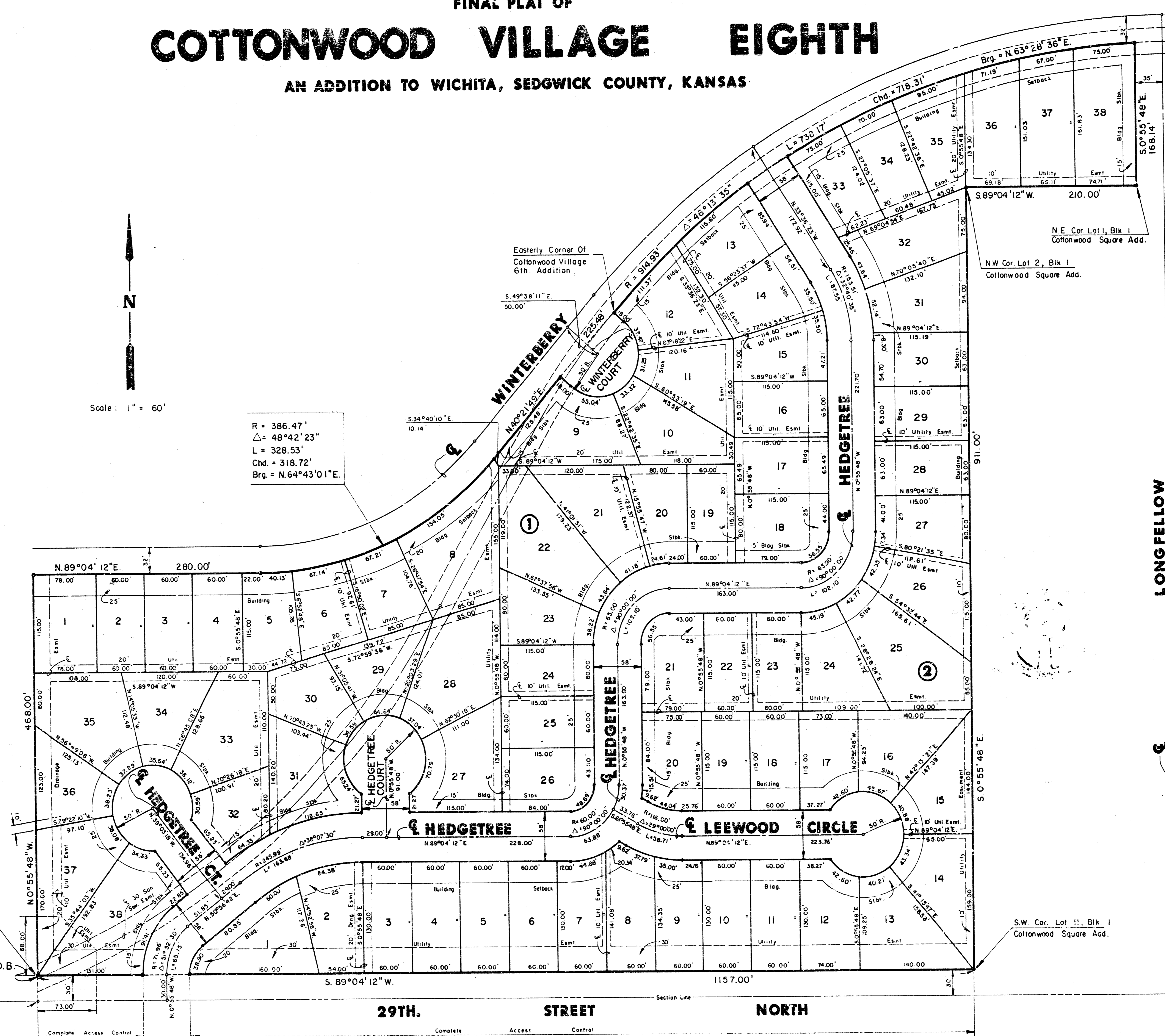
Easterly Corner Of
Cottonwood Village
6th Addition

S.E. Cor. Lot 13, Block 2
Cottonwood Village 6th
Addition

SW Cor., SE 1/4, Sec. 31
T. 26 S., R. 2 E., 6th P.M.

P.O.B.

SW Cor. Lot 11, Blk. 1
Cottonwood Square Add.



29TH. STREET NORTH

LONGFELLOW

4/4

FILMED FROM THE BEST
AVAILABLE COPY