

STORM SEWER PLANS FOR COTTONWOOD VILLAGE EIGHTH

PHASE 2

S.W.S. NO. 358
PROJECT NO.

468-76-245-81814-000-000-001

CITY OF WICHITA, KANSAS
MICHAEL E. LINDEBAK, CITY ENGINEER

MARCH, 1989

INDEX NO. 607333

GENERAL NOTES

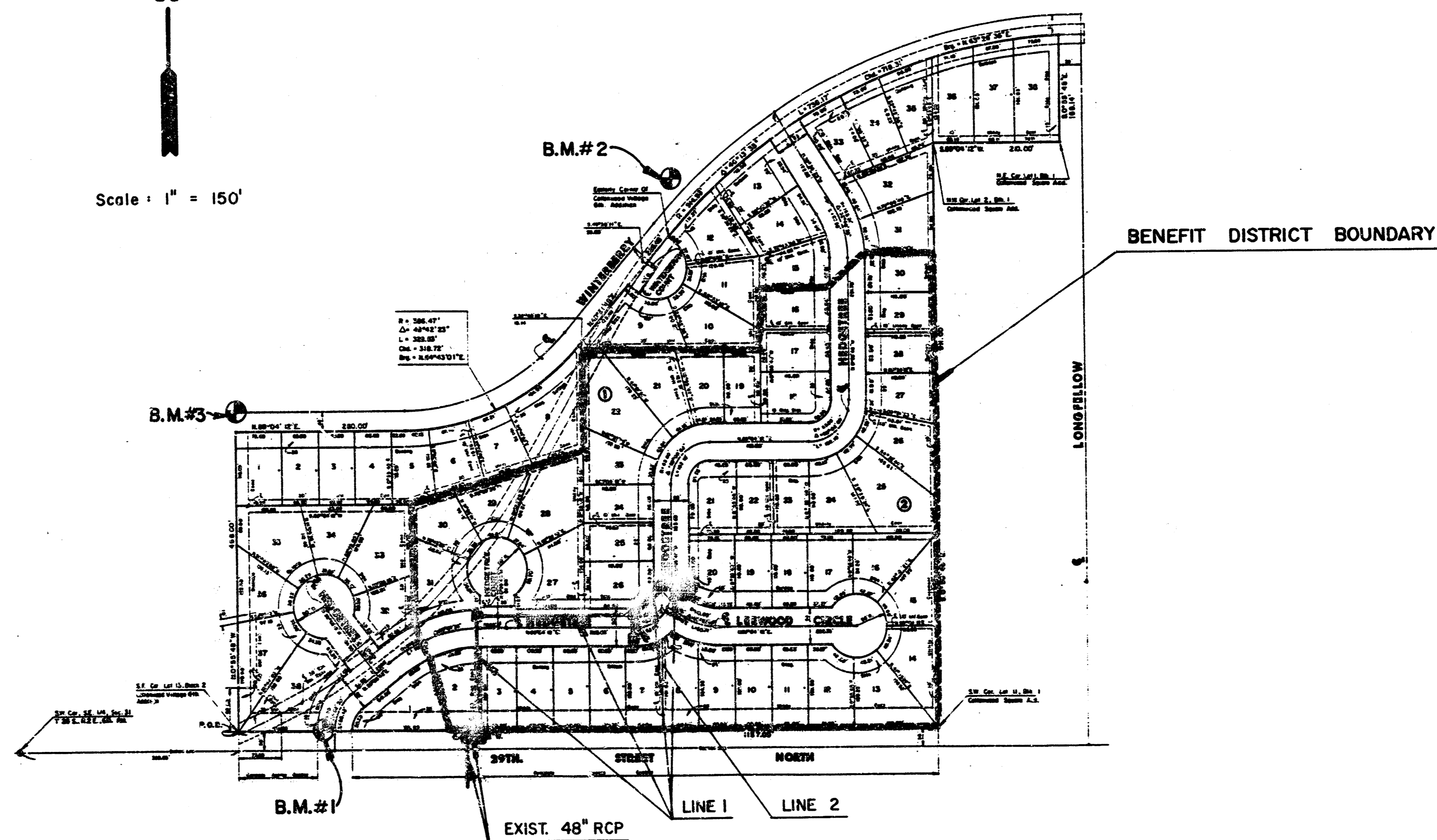
1. THE CONTRACTOR SHALL BE RESPONSIBLE FOR PRESERVING PROPERTY IRONS. THE CONTRACTOR SHALL BE REQUIRED TO RE-ESTABLISH ANY PROPERTY IRONS WHICH ARE DAMAGED OR DESTROYED BY HIS CONSTRUCTION OPERATIONS. SUCH IRONS SHALL BE RE-ESTABLISHED BY A LICENSED LAND SURVEYOR IN ACCORDANCE WITH STATE LAWS.
2. THE TOPS OF INLET AND MANHOLE AS NOTED ON THE PLANS MAY VARY SO AS TO MEET PROPOSED TOP OF CURB ELEVATIONS OR PAVEMENT ELEVATIONS. THE FIELD ENGINEER SHALL LOCATE INLETS AND MANHOLES WITH REFERENCE TO PROPOSED PAVING PLANS OF THE PERTINENT STREETS.
3. ALL CONCRETE SHALL BE STANDARD PAVING MIX UNLESS OTHERWISE NOTED.
4. UNDERGROUND UTILITY SERVICE LINES AND OVERHEAD UTILITY POLE LINES ARE TO BE ADJUSTED AS NECESSARY BY OTHERS PRIOR TO CONSTRUCTION UNLESS THE PLANS SPECIFICALLY CALL FOR THEIR ADJUSTMENT BY THE CONTRACTOR OR UNLESS THE PLANS SPECIFICALLY IDENTIFY A UTILITY TO BE ADJUSTED BY ITS OWNER DURING CONSTRUCTION. EXISTING UTILITIES AND THEIR LOCATION, AS SHOWN ON THE PLANS, REPRESENT THE BEST INFORMATION OBTAINABLE FOR DESIGN. LOCATION INFORMATION HAS BEEN OBTAINED FROM THE VARIOUS UTILITY COMPANIES AND IS EITHER FROM COMPANY RECORD DRAWINGS OR COMPANY PROVIDED FIELD LOCATIONS. THE CONTRACTOR WILL BE REQUIRED TO WORK AROUND EXISTING UTILITIES WITHIN THE RIGHT OF WAY WHICH DO NOT CONFLICT WITH PROPOSED CONSTRUCTION.

NOTE: NOTIFY THE FOLLOWING COMPANIES PRIOR TO ANY EXCAVATION:

BELL TELEPHONE COMPANY	1-316-571-2115
CABLEVISION	262-4270 or 263-2061
KPAL COMPANY	263-7511
KANSAS GAS & ELECTRIC	264-1141
KANSAS ONE CALL	1-800-344-7233
CITY OF WICHITA WATER DEPT.	268-4908
CITY OF WICHITA SEWER DEPT.	268-4071

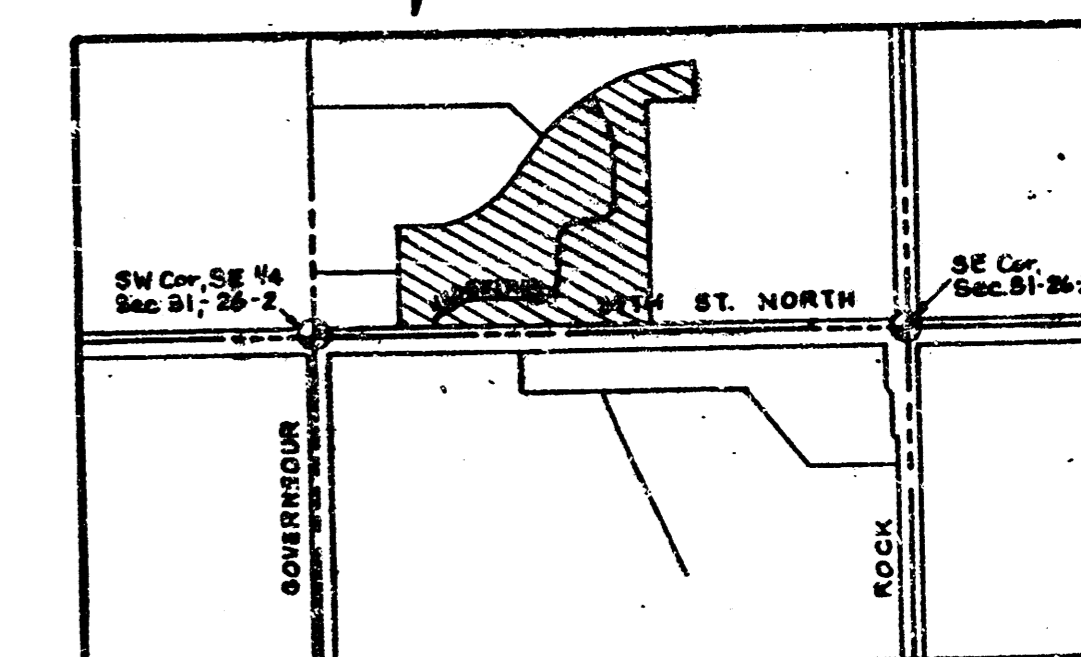


Scale: 1" = 150'



INDEX TO DRAWINGS

SHEET NO.	DESCRIPTION
1	TITLE SHEET
2	LINE 1
3	LINES 1 & 2
4	NEW TYPE I-A CURB INLET DETAIL (5' OPENING)
5	NEW TYPE I-A CURB INLET DETAIL (10' OPENING)
6	FINAL PLAT

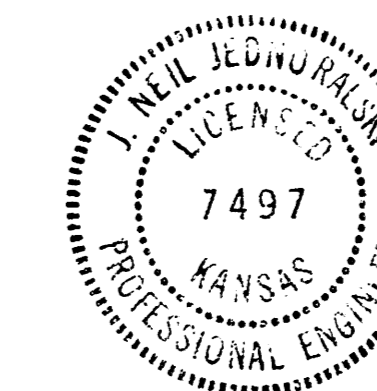


LOCATION MAP

BENCH MARKS

- B.M. #1 "x" Cut on top of curb on North end of Northwest return at Hedgetree and 29th Street North. Elev.=189.43
- B.M. #2 "x" on top of curb and centerline of approach walk at 7500 Waterberry. Elev.=196.925
- B.M. #3 "x" Cut on Southeast corner of curb inlet at Northwest corner of Cottonwood Village 8th Add. Elev.=188.85

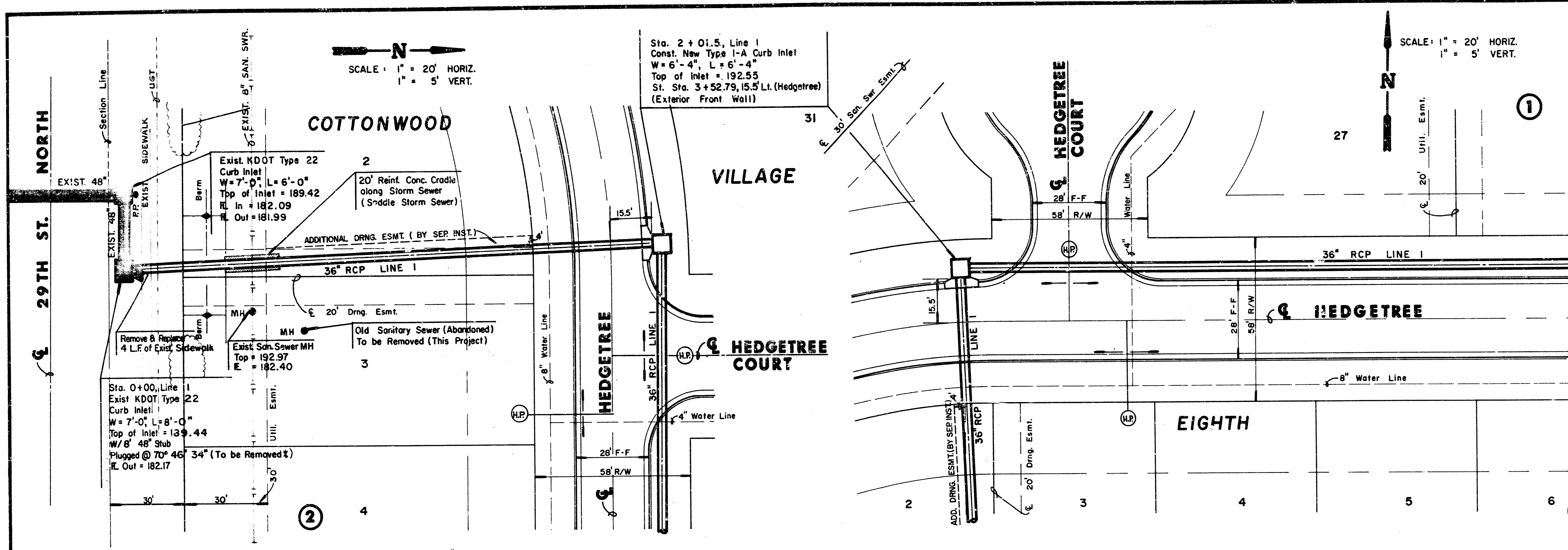
5190



	COTTONWOOD VILLAGE EIGHTH (PHASE 2)	Design JNJ Drawn by KSM Checked by Date MAR. 7, 1989 Job no.
	STORM SEWER PLANS	Sheet 1 of 6
MID-KANSAS ENGINEERING CONSULTANTS PA 3500 NORTH ROCK ROAD BUILDING #800 WICHITA, KANSAS 67226		636-5566

MKEC Project No. 88-05-113-D

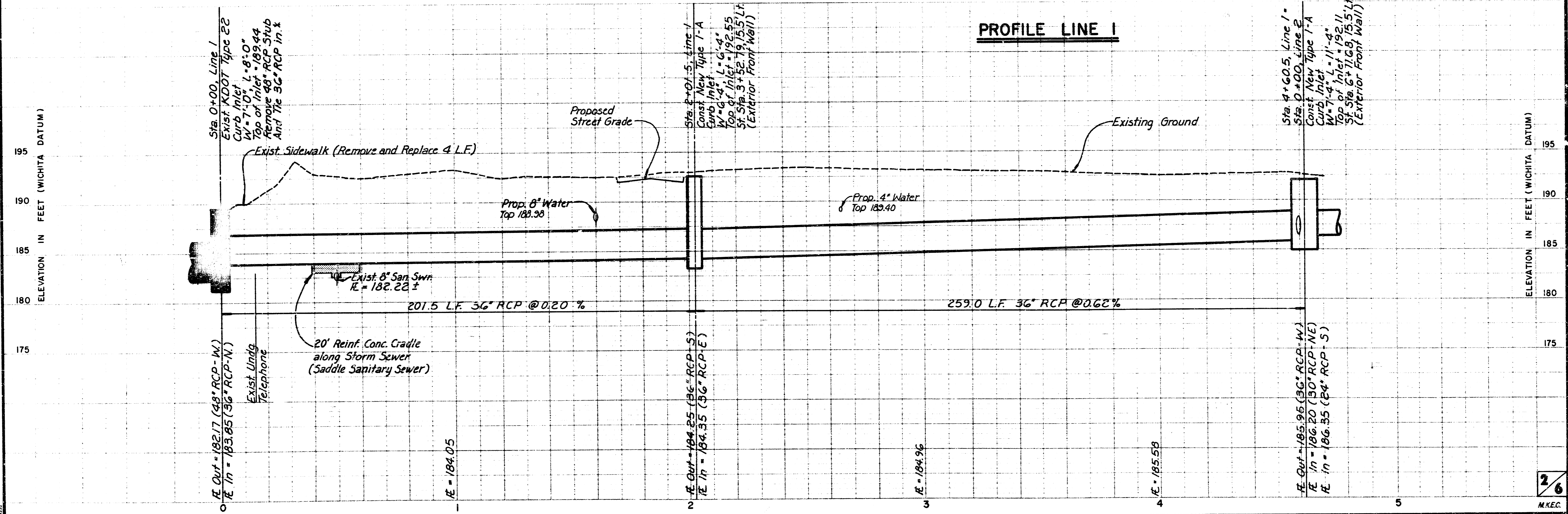
FILMED FROM THE BEST AVAILABLE COPY



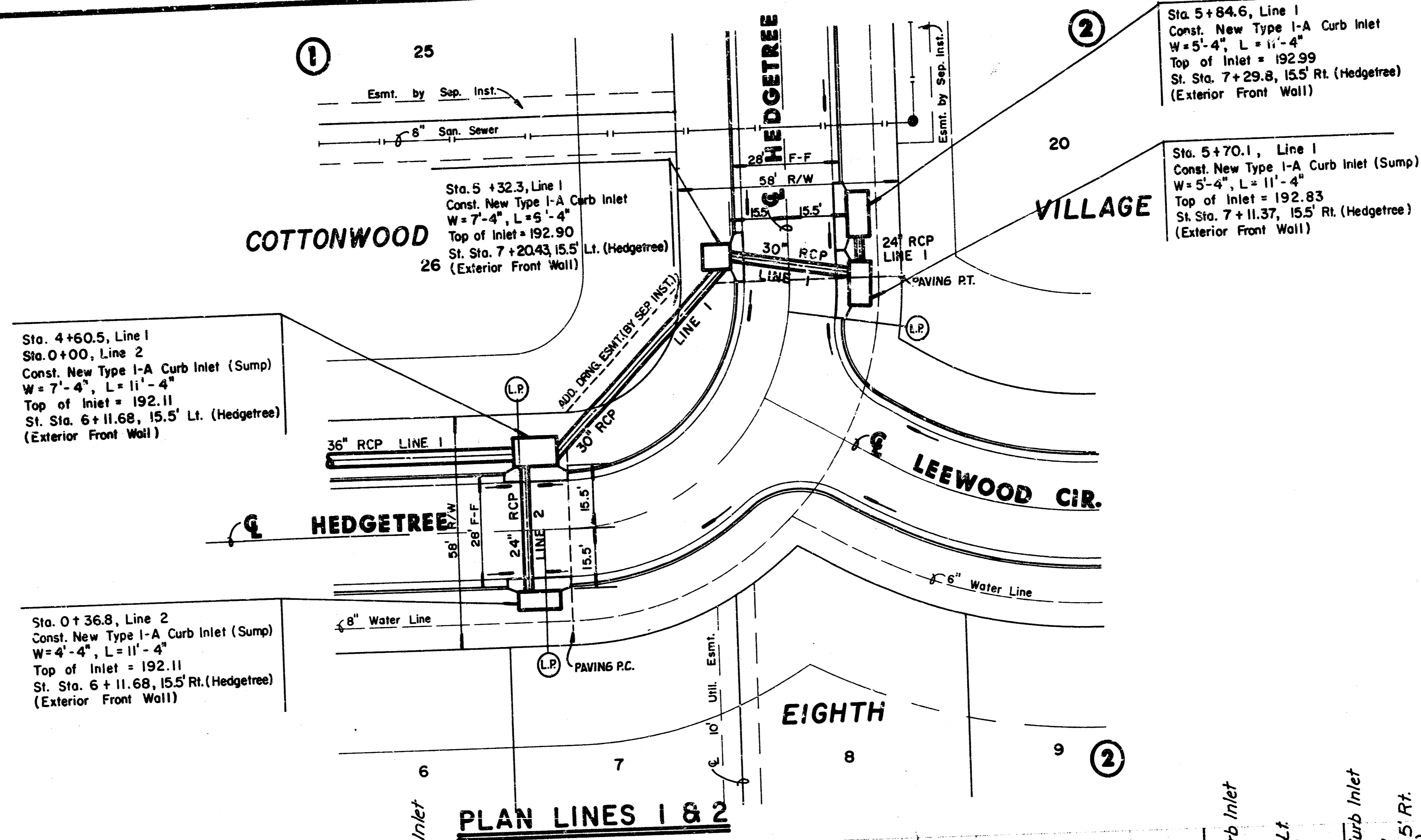
* NOTE: The removal of the exist 48" RCP stub and the connecting of the new 36" RCP to exist. inlet shall be Subsidiary to this Project.

PLAN LINE 1

PROFILE LINE 1



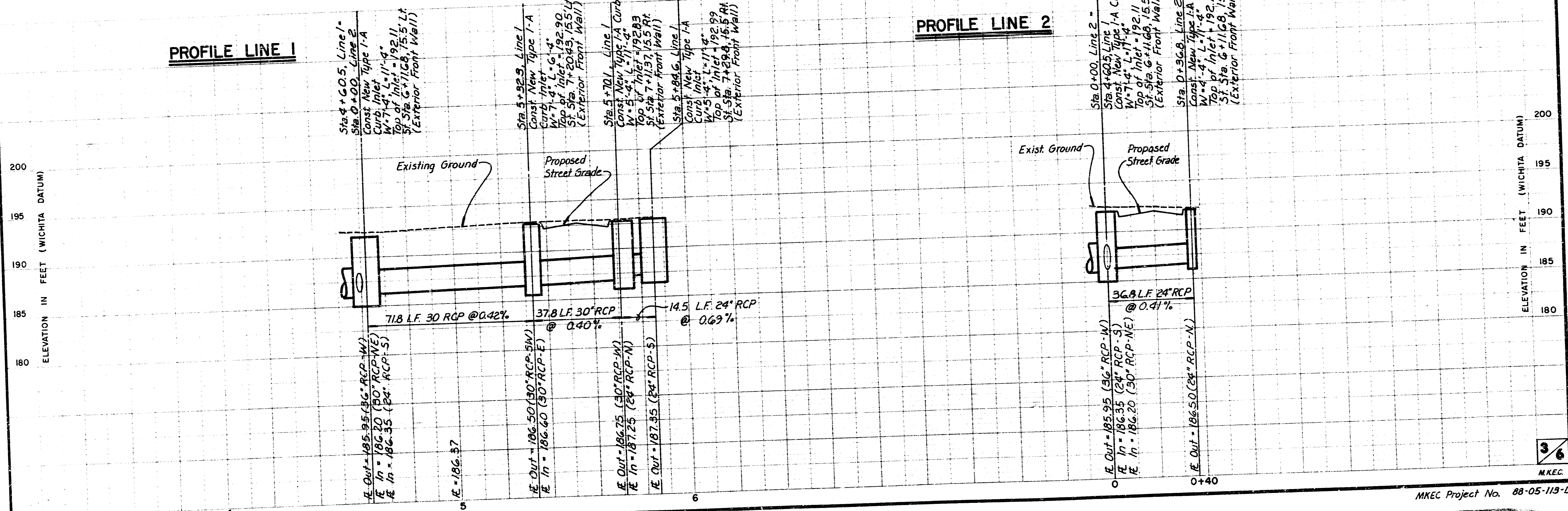
FILMED FROM THE BEST AVAILABLE COPY



SCALE: 1" = 20' HORIZ.
 1" = 5' VERT.

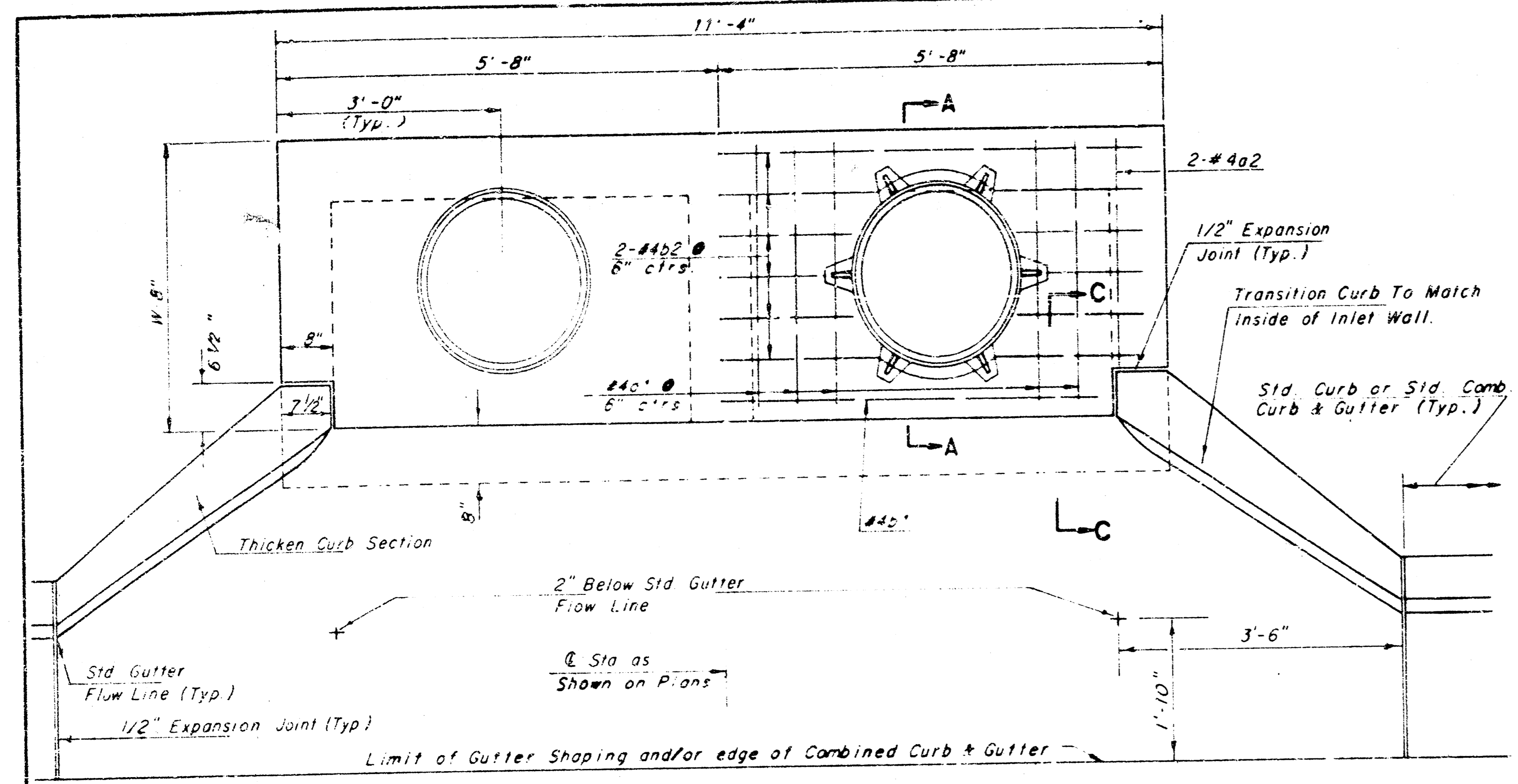
PROFILE LINE 1

PROFILE LINE 2

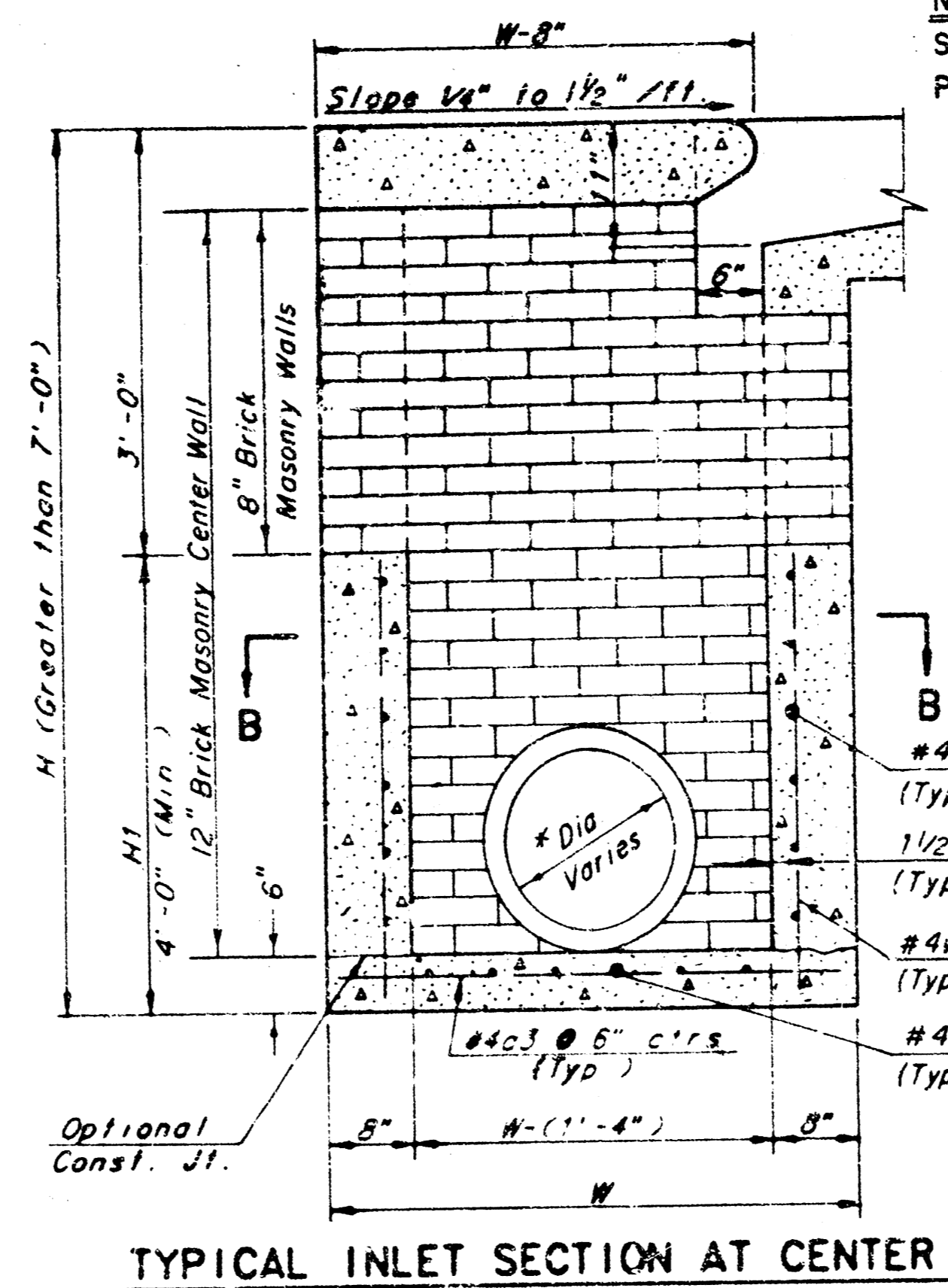


36

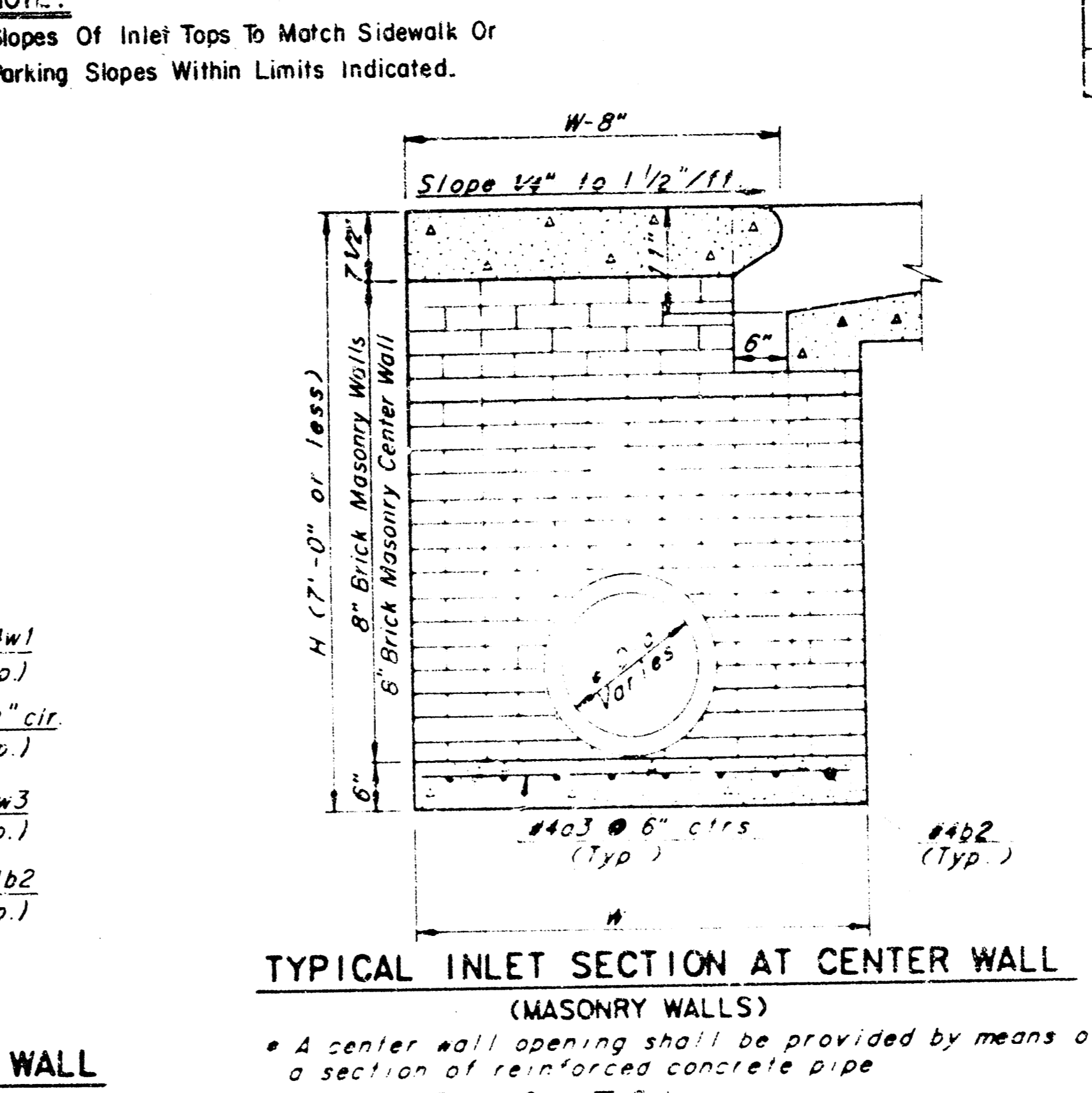
FILMED FROM THE BEST AVAILABLE COPY



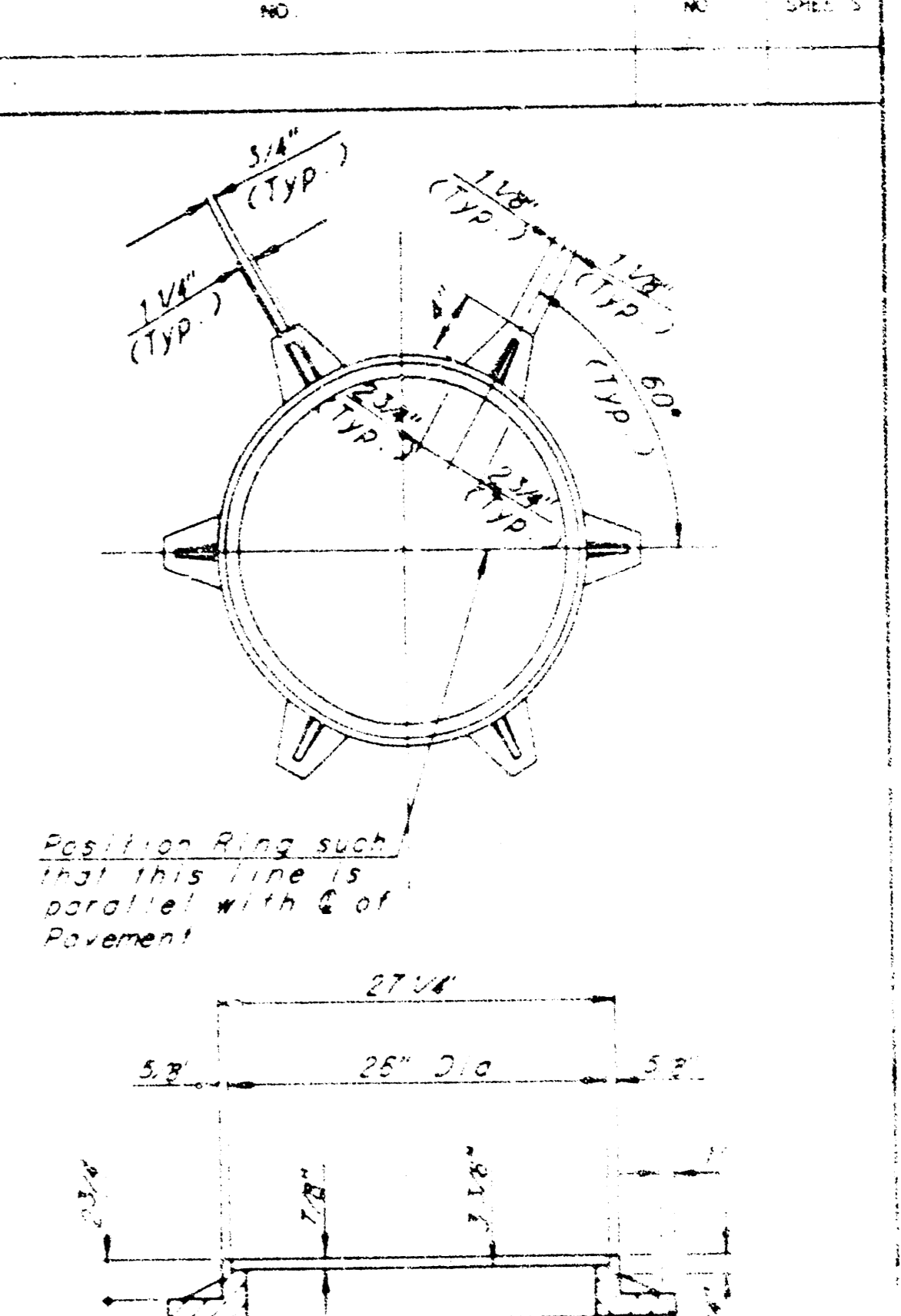
SLAB REINFORCING NOT SHOWN SHOWING SLAB REINFORCING NOTE Expansion Joint only in Curb Area with Conc. Pavement.



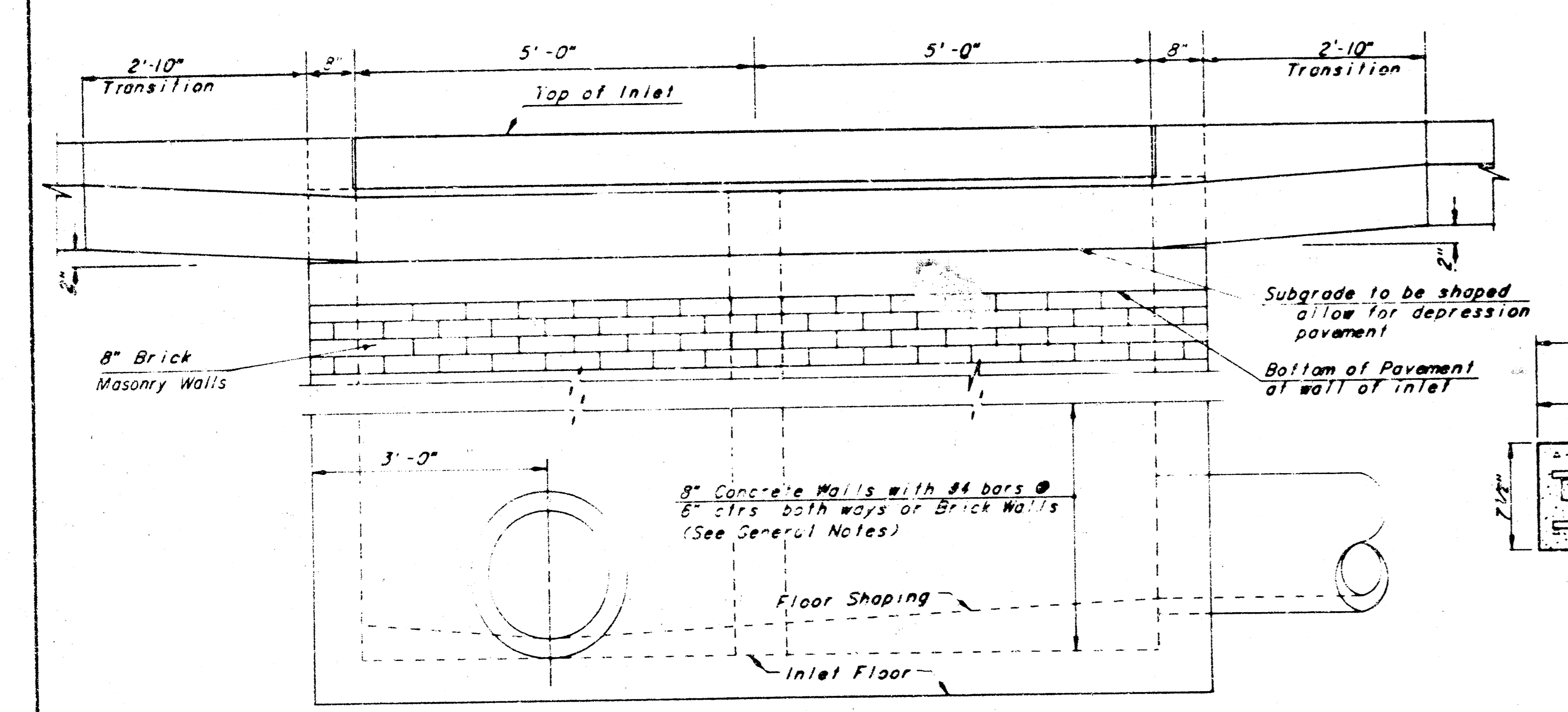
TYPICAL INLET SECTION AT CENTER WALL (REINFORCED CONCRETE WALLS)



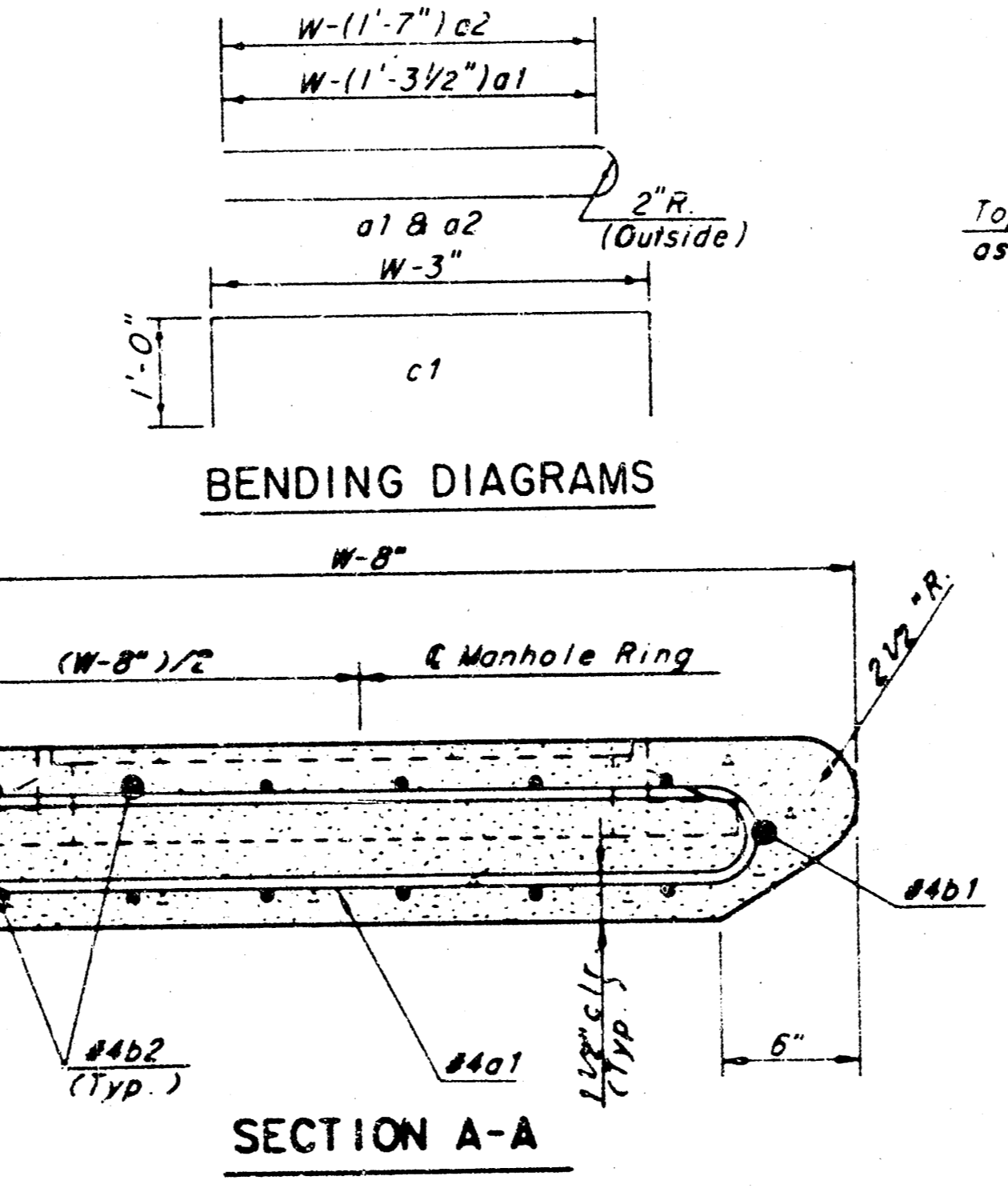
TYPICAL INLET SECTION AT CENTER WALL (MASONRY WALLS)



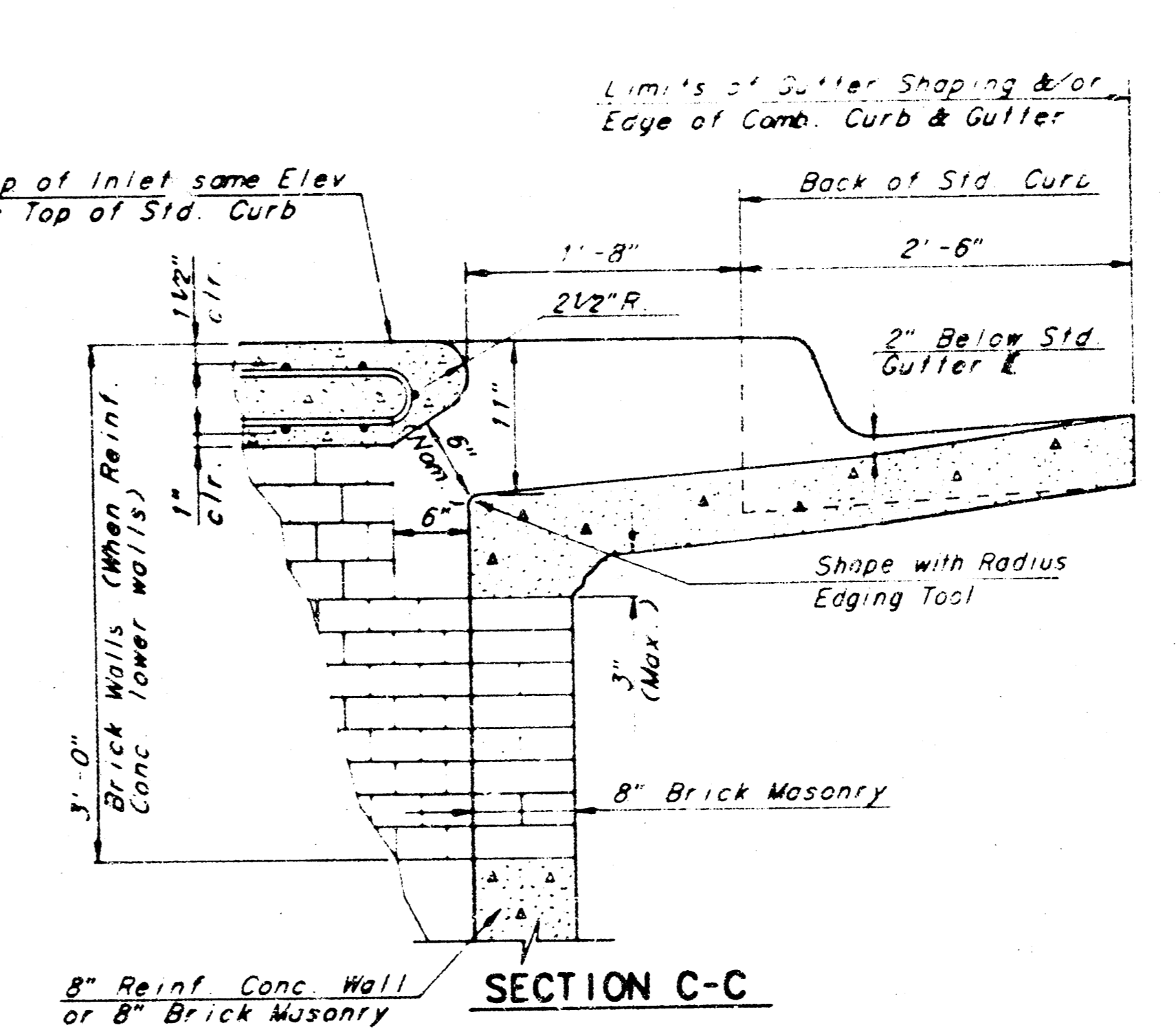
CAST IRON INLET RING Wt. = 180 lbs.



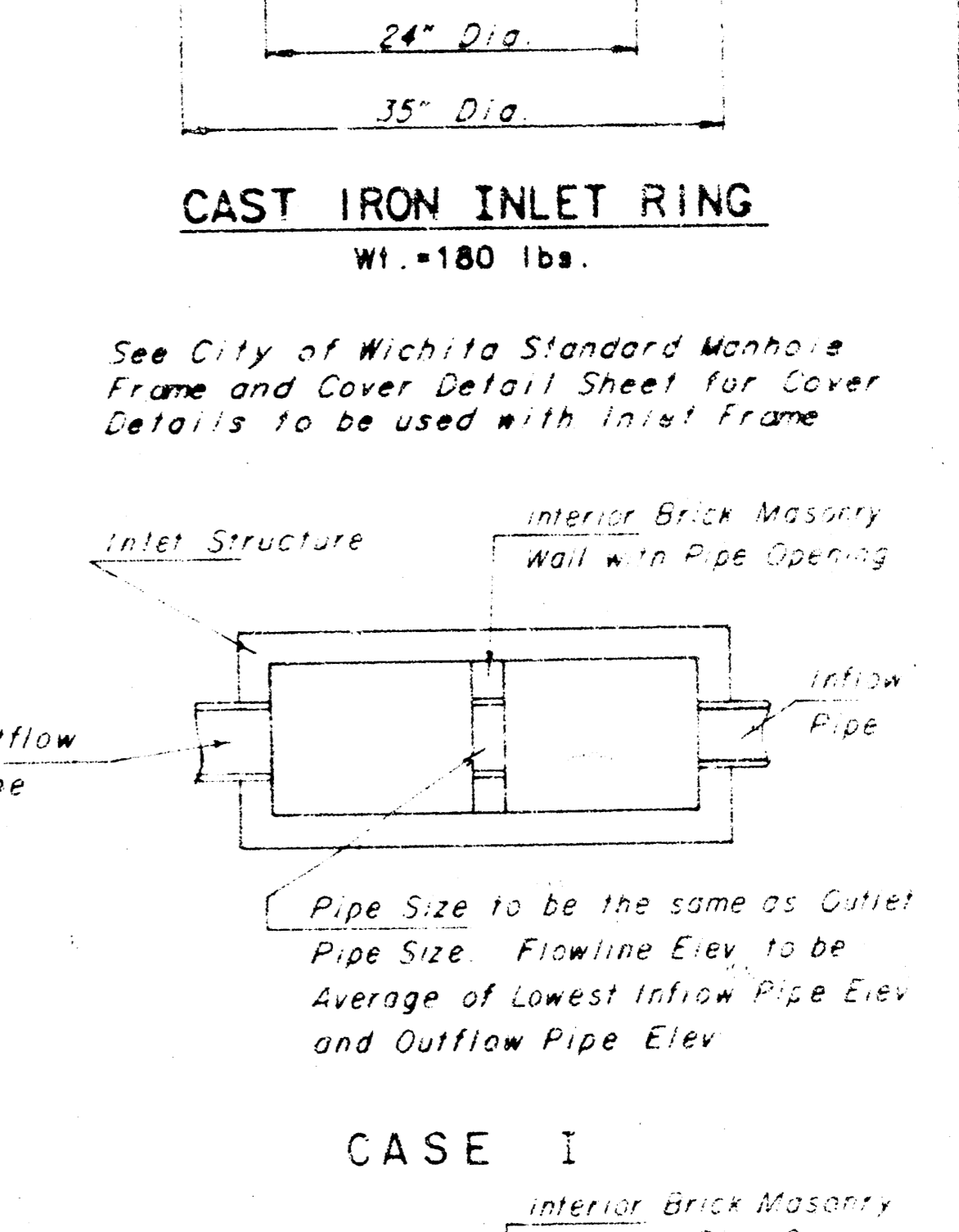
ELEVATION



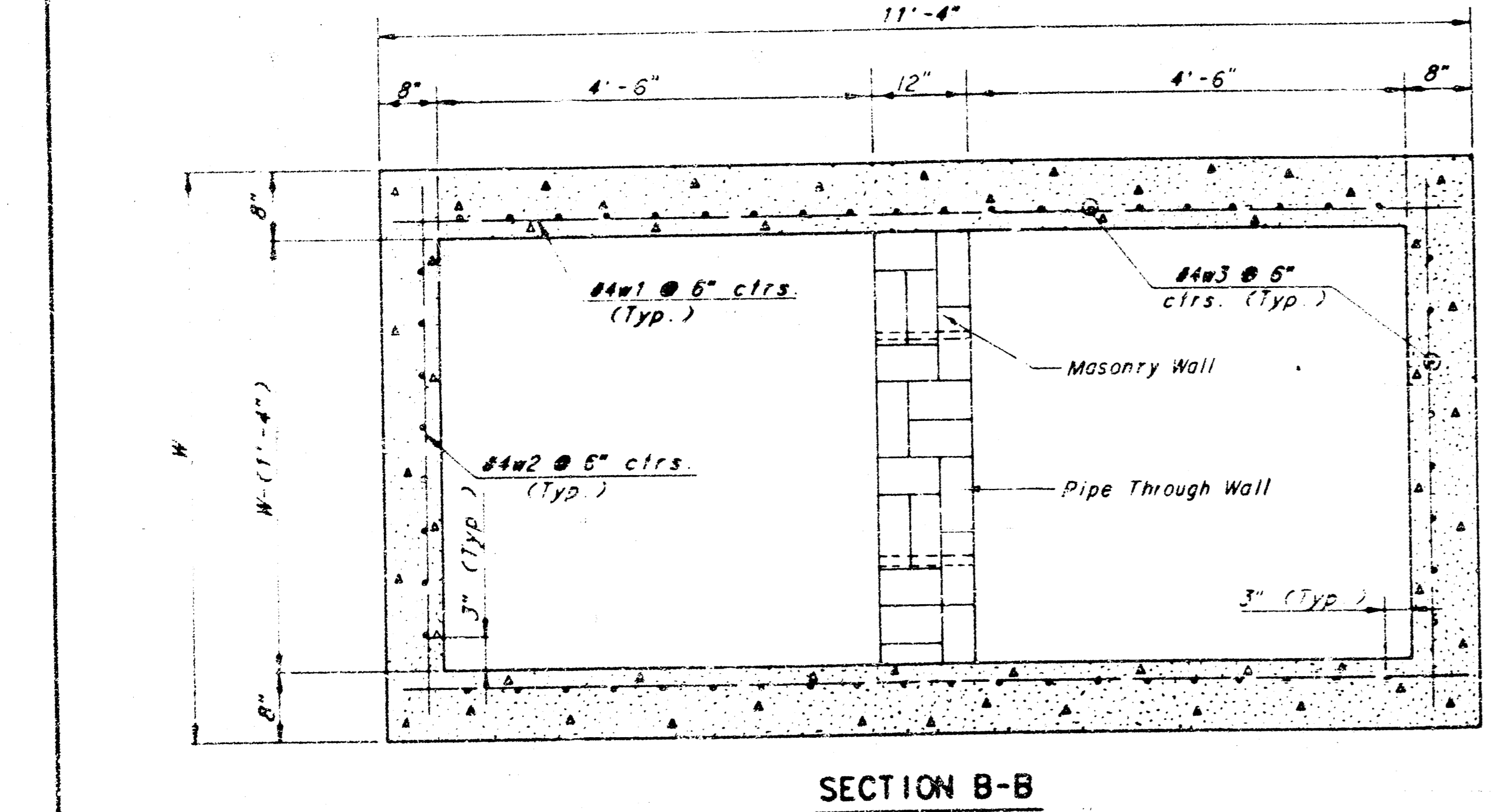
BENDING DIAGRAMS SECTION A-A



SECTION C-C



CASE I CASE II



SECTION B-B

SLAB AND FLOOR REINFORCING

MARK	SIZE	W=4'-4"		W=5'-4"		W=6'-4"		W=7'-4"		W=8'-4"	
		NO.	LENGTH	NO.	LENGTH	NO.	LENGTH	NO.	LENGTH	NO.	LENGTH
c1	#4	13	6'-7 1/4"	13	8'-7 1/4"	13	10'-7 1/4"	13	12'-7 1/4"	13	14'-7 1/4"
o2	#4	2	6'-0"	2	8'-0"	2	10'-0"	2	12'-0"	2	14'-0"
o3	#4	20	4'-1"	20	5'-1"	20	6'-1"	20	7'-1"	20	8'-1"
b1	#4	1	9'-8"	1	9'-8"	1	9'-8"	1	9'-8"	1	9'-8"
o2	#4	18	11'-1"	24	11'-1"	30	11'-1"	36	11'-1"	42	11'-1"

WALL REINFORCING

MARK	SIZE	W=4'-4"		W=5'-4"		W=6'-4"		W=7'-4"		W=8'-4"	
		NO.	LENGTH	NO.	LENGTH	NO.	LENGTH	NO.	LENGTH	NO.	LENGTH
c1	#6	4	6'-1"	4	7'-1"	4	8'-1"	4	9'-1"	4	10'-1"
w1	#4	1	11'-1"	1	11'-1"	1	11'-1"	1	11'-1"	1	11'-1"
w2	#4	1	4'-1"	1	5'-1"	1	6'-1"	1	7'-1"	1	8'-1"
w3	#4	1	3'-1"	1	3'-1"	1	3'-1"	1	3'-1"	1	3'-1"

* Field bend or cut Reinforcing as required for clearance
 ① (H1-6") x 4 (H1-6") Rounded down to nearest 0.5"
 ② 10-4(W-16") ③ H1(9")

- GENERAL NOTES
- THE CONTRACTOR SHALL BE REQUIRED TO CONSTRUCT 8" BRICK MASONRY WALLS BETWEEN THE CONCRETE INLET BASE AND TOP ON THIS INLET WHEN W=6'-4" OR LESS AND H=7'-0" OR LESS. WHEN W IS GREATER THAN 6'-4" AND H IS LESS THAN 7'-0" THE OUTSIDE INLET WALLS BELOW THE BRICK STACK SHALL BE REINFORCED CONCRETE CONSTRUCTION AND THE CENTER WALL SHALL BE OF MASONRY CONSTRUCTION AS SHOWN FOR THE MASONRY WALL OPTION.
 - INLET INVERT SHALL BE SHAPED WITH A SACK SAND MIX CONCRETE TO CREATE FLOW CHANNELS AND TO INCREASE HYDRAULIC EFFICIENCY SUCH THAT THE INLET WILL BE SELF CLEANING BETWEEN ALL INLET AND/OR OUTLET PIPES.
 - CONCRETE TOPS TO BE INSTALLED ON THIN MORTAR CUSHION TO INSURE FULL SUPPORT ALONG BRICK WALLS. CONCRETE TOPS MAY BE CAST IN PLACE OR PRECAST. CONCRETE USED FOR INLET CONSTRUCTION SHALL BE CONCRETE PAVEMENT MIX.
 - INLET TOP REINFORCING SHALL BE SPACED ON 6" MAX. CENTERS. INLET LIDS SHALL BE NOTCHED OUT AS INDICATED TO FACILITATE CONSTRUCTION OF CURB BARS IN INLET TOP TO BE FIELD BENT OR CUT TO CLEAR MANHOLE RING.
 - THE ENDS OF ALL PIPES INSTALLED IN INLETS SHALL BE CUT OFF FLUSH WITH THE INSIDE FACE OF THE INLET WALL.

STANDARD CURB INLET PRECAST TOPS

W	PRE-CAST TOP SIZE	SIDE OR INTERIOR WALL PIPE SIZE	CU YD. CONC
4'-4"	3'-8" x 11'-4" x 7 1/2"	21" B SMALLER	0.83 ±
5'-4"	4'-8" x 11'-4" x 7 1/2"	24" B 30"	1.09 ±
6'-4"	5'-8" x 11'-4" x 7 1/2"	36" B 42"	1.55 ±
7'-4"	6'-8" x 11'-4" x 7 1/2"	48" B 54"	1.61 ±
8'-4"	7'-8" x 11'-4" x 7 1/2"	60" B 66"	1.87 ±

STANDARD TYPE 1A CURB INLET
 INLET OPENING = 6" x 10" - 0"

WICHITA, KANSAS

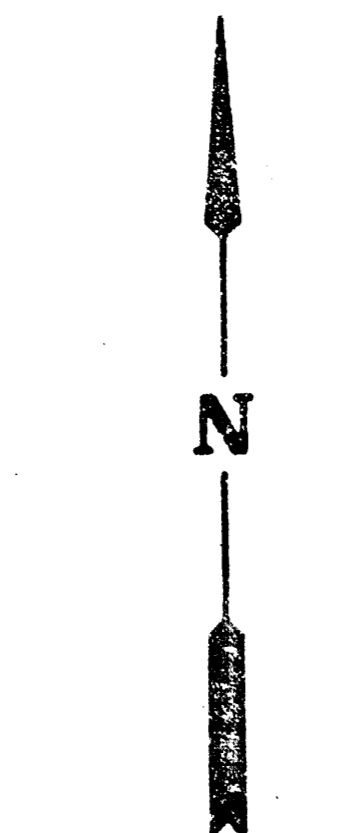
Designed by BER, KJS, MHP Checked by AMS
 Drawn by JOP Date Nov. 1984

FILMED FROM THE BEST AVAILABLE COPY

MKEC Project No. 88-05-113-0

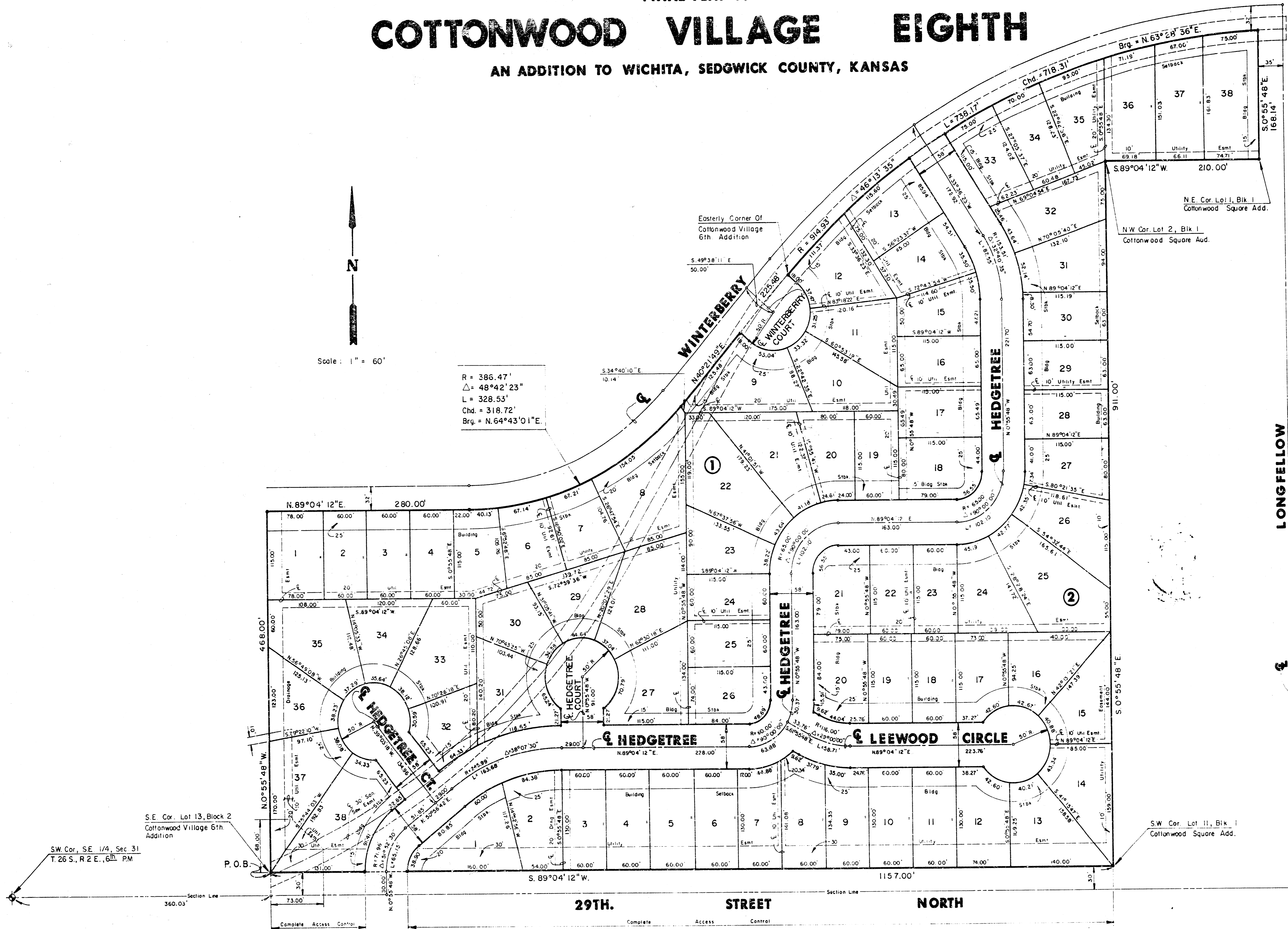
FINAL PLAT OF COTTONWOOD VILLAGE EIGHTH

AN ADDITION TO WICHITA, SEDGWICK COUNTY, KANSAS



Scale: 1" = 60'

R = 386.47'
Δ = 48°42'23"
L = 328.53'
Chd. = 318.72'
Brg. = N.64°43'01"E



S.E. Cor. Lot 13, Block 2
Cottonwood Village 6th
Addition

SW Cor. S.E. 1/4, Sec 31
T.26 S., R.2 E., 6th PM

P.O.B.

SW Cor. Lot 11, Blk 1
Cottonwood Square Add.

29TH STREET NORTH

LONGFELLOW

66

FILMED FROM THE BEST AVAILABLE COPY