

Time: 11:54:20
 Date: 1-10-1994
 Drawing File: X:\ARPS\DOCA\1537\11-SW0
 12_22

CONSTRUCTION PLANS FOR DRAINAGE IMPROVEMENTS

THE MOORINGS - PHASE 3

TO

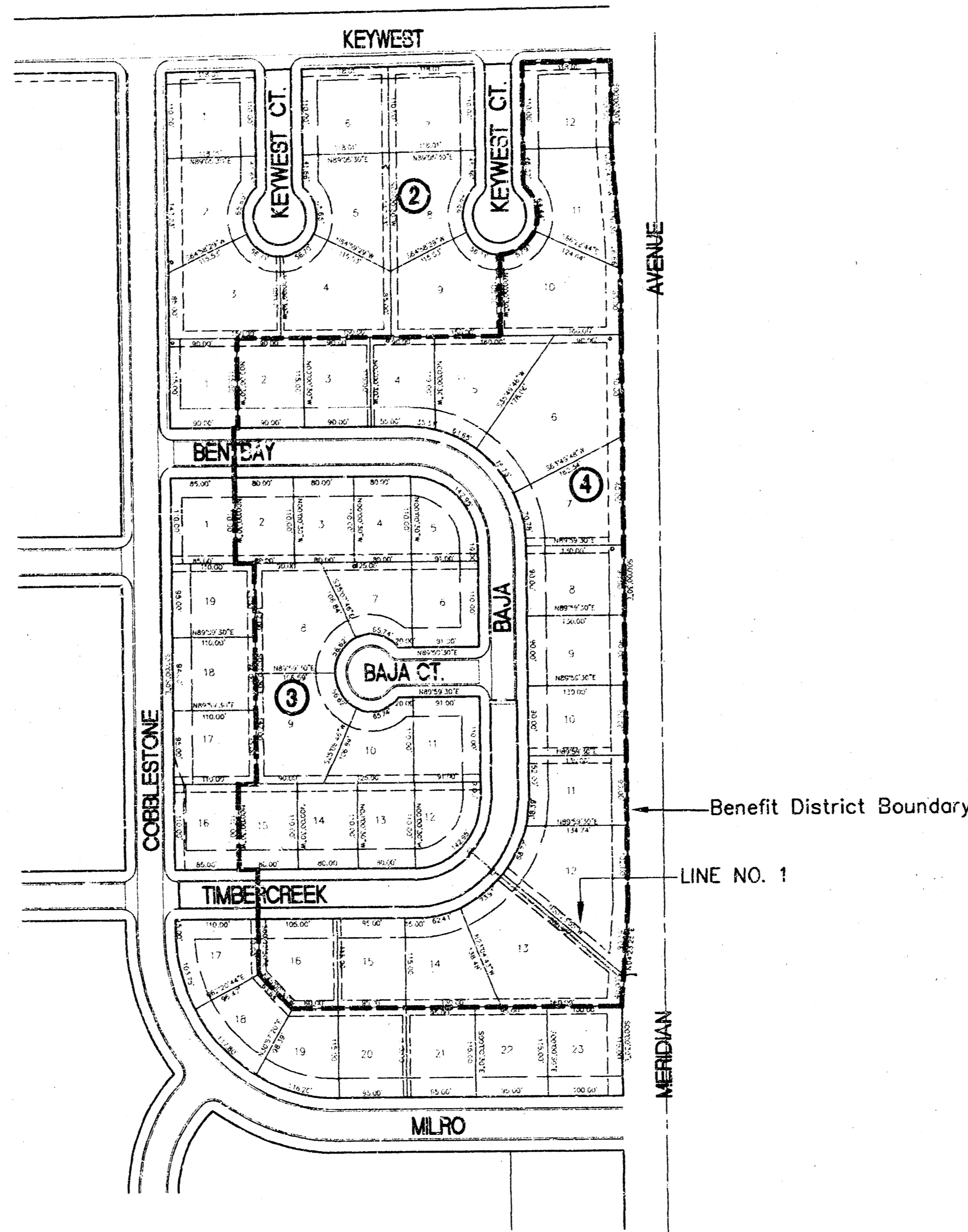
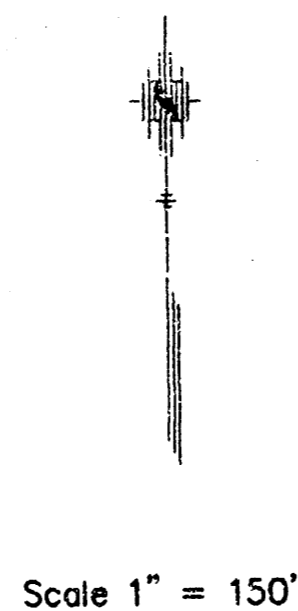
THE CITY OF WICHITA, KANSAS

STORM WATER SEWER NO. 418

MICHAEL E. LINDEBAK, P.E. - CITY ENGINEER
 PROJECT NO. 468-82134
 INDEX CODE 750463

GENERAL NOTES:

1. Utility service lines, poles, valve boxes, meters and etc. are to be adjusted as necessary by others prior to construction unless the plans specifically call for their adjustment by the Contractor. Existing utilities and their location, as shown on the plans, represent the best information obtainable for design. The Contractor will be required to work around existing utilities within the right-of-way which do not conflict with proposed construction.
2. Rubble from the removal of miscellaneous structures and excess excavation which is to be wasted shall be disposed of on sites to be provided by the Contractor. These sites shall be approved by the Engineer as to suitability, appearance and site location. Locations that, in the opinion of the Engineer, will leave an unsightly appearance will not be approved.
 All suitable excavation shall be filled on low lying lots within the addition before any material is disposed of off site.
 All disposal sites must be approved by the Kansas Department of Health and Environment. Material either stockpiled or disposed of in a flood plain would require a Kansas State Board of Agriculture permit. Any material dumped in waters of the United States or wetlands is subject to U.S. Corps of Engineers permitting regulations. Any material buried or stockpiled beyond approved construction limits would require additional archaeological investigations unless buried in a previously approved borrow location.
3. Trees and shrubs in public right-of-way which are in direct conflict with proposed new construction shall be removed by the Contractor with the Engineer's approval. Trees and shrubs which are not in direct conflict with proposed new construction shall be saved and protected from damage.
4. The Contractor shall be responsible for preserving property irons. The Contractor will be required to reestablish any property irons which are damaged or destroyed by his construction operations. Such irons shall be reestablished by a licensed land surveyor or a licensed professional engineer in accordance with state laws.
5. All disturbed areas will be seeded to prevent erosion during construction. The seed will be rye grass as specified.
6. Disturbed areas east of the wall separating Meridian Avenue and the subdivision shall be seeded for permanent restoration.



*BOOKED
 8-19-94
 MCB
 0-234*

INDEX

TITLE SHEET	SHEET 1
STORM SEWER LINE NO. 1	SHEET 2
STD. TYPE 1-A CURB INLET	SHEET 3
STD. TYPE "A" MANHOLE	SHEET 4
THE MOORINGS PLAT	SHEET 5

BENCH MARKS

(City of Wichita Datum)

1. "□" cut on T.C. at south return of Cobblestone and Bentbay.
Elev. 142.50
2. "□" cut on T.C. at north return of Cobblestone and Timbercreek.
Elev. 142.44
3. City of Wichita disc at Keywest and Meridian Avenue, 59' west and 32.3' north of centerline north; being 11.8' north of north curb Keywest.
Elev. 141.85
4. "□" cut at southwest corner of north Headwall at Meridian Avenue and Milro.
Elev. 139.85

OCTOBER 1993

PLANS PREPARED

BY

POC & ASSOCIATES OF KANSAS, INC.

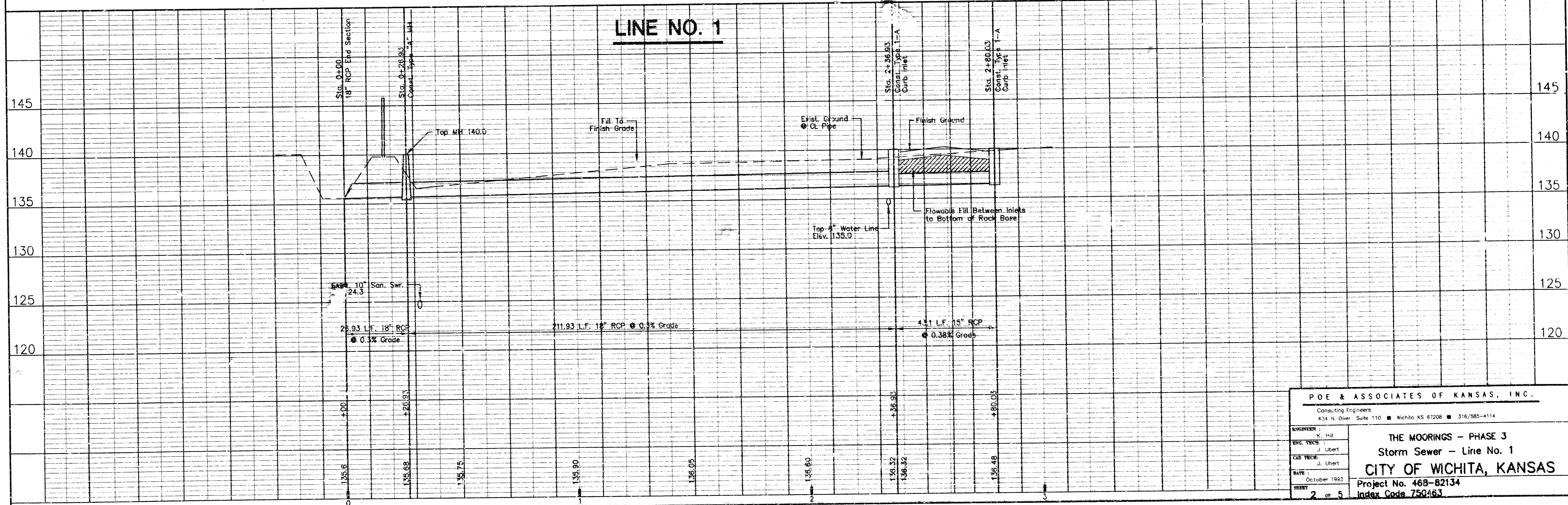
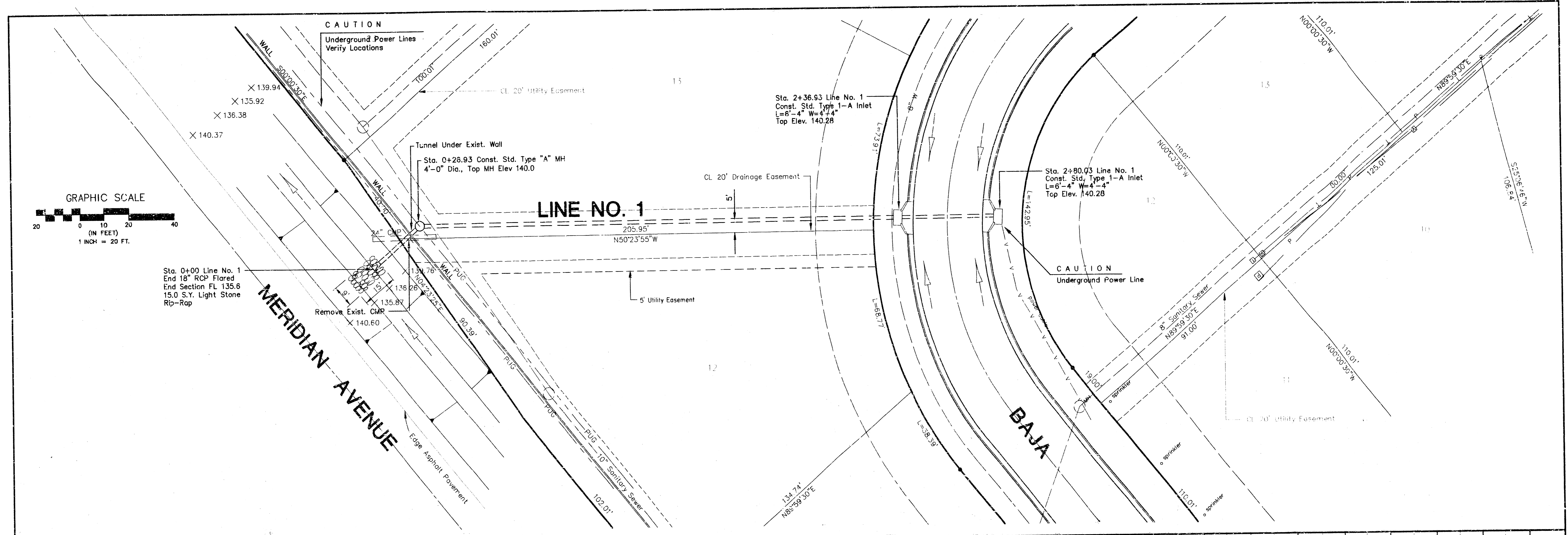
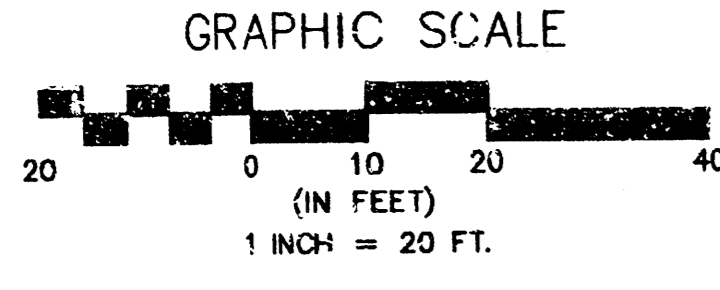
CONSULTING ENGINEERS
 424 N. Olive, Suite 110 • Wichita, KS 67208 • 316/695-4114

Kummi & Hill

1-11-94

S:\DOCA\1537\11-SW0 Mod. Jan 10 15:56:10 1994 Steve Schmidt

Time is: 14.44:52
 Date is: 1-10-1993
 Drawing File: X:\APPS\DCAP\537\SWD1
 12_2



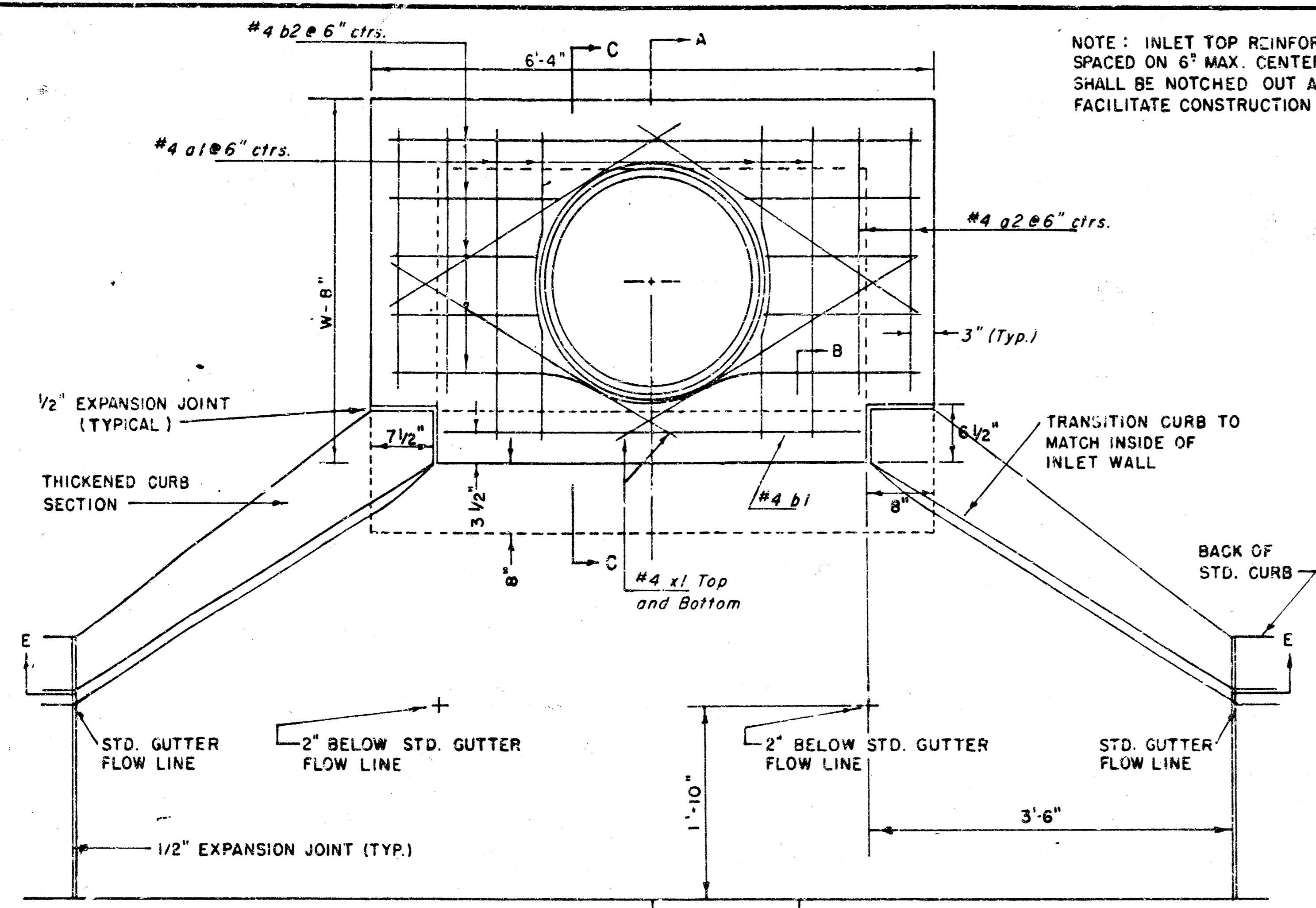
POE & ASSOCIATES OF KANSAS, INC.
 Consulting Engineers
 434 N. Olive, Suite 110 • Wichita, KS 67208 • 316/885-4114

THE MOORINGS - PHASE 3
Storm Sewer - Line No. 1
CITY OF WICHITA, KANSAS

Project No. 468-82134
 Index Code 750463

DESIGNER:	K. Hill
ENG. CHECK:	J. Libert
CAD. TECH:	J. Libert
DATE:	October 1993
SHEET:	2 of 5

F:\APPS\DCAP\537\SWD1 Mon Jan 10 16:09:20 1994 Steve Schmitt



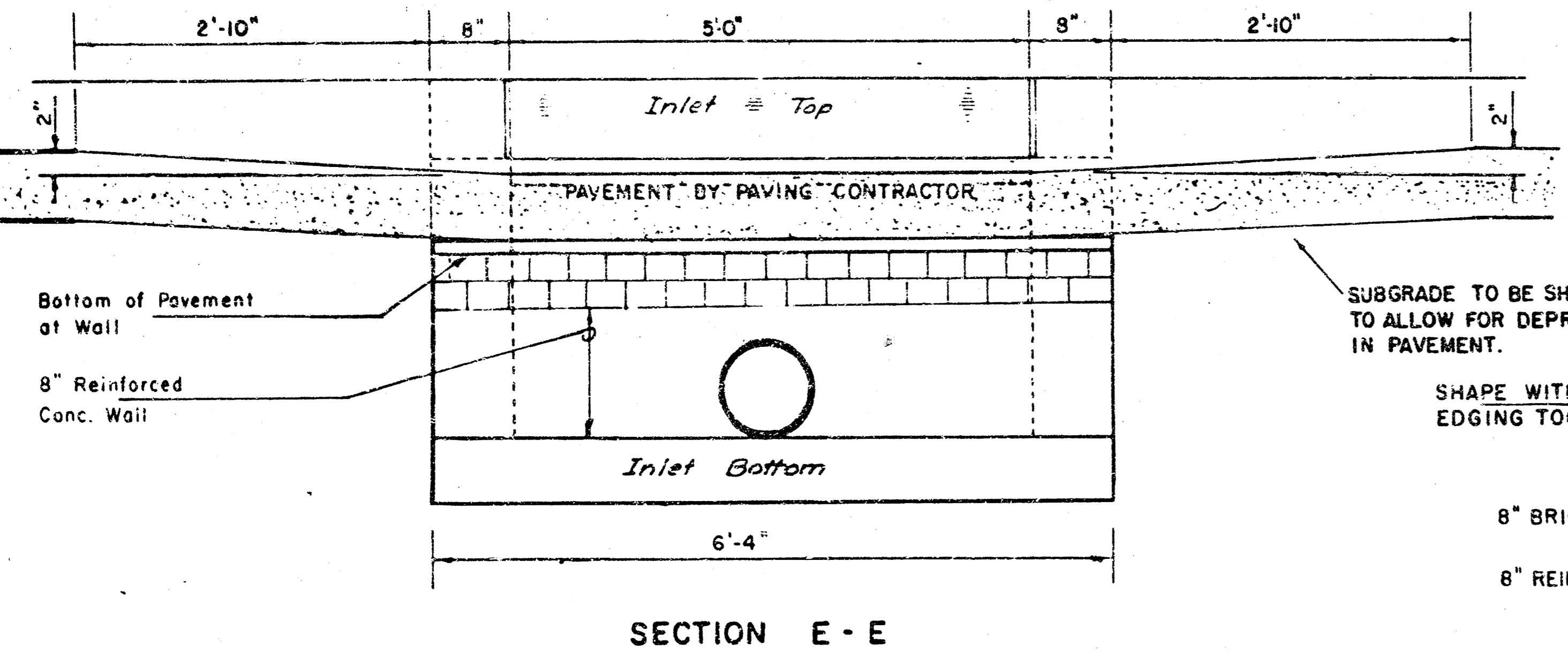
PRECAST SLAB AND FLOOR REINFORCING

Mark	Size	W=4'-4"		W=5'-4"		W=6'-4"		W=7'-4"		W=8'-4"	
		No.	Length	No.	Length	No.	Length	No.	Length	No.	Length
a1	#4	6	6'-7"	6	8'-7"	6	10'-7"	6	12'-7"	6	14'-7"
a2	#4	4	6'-0"	4	8'-0"	4	10'-0"	4	12'-0"	4	14'-0"
a3	#4	13	4'-1"	13	5'-1"	13	6'-1"	13	7'-1"	13	8'-1"
b1	#4	1	4'-9"	1	4'-9"	1	4'-9"	1	4'-9"	1	4'-9"
ib2	#4	23	6'-1"	29	6'-1"	35	6'-1"	41	6'-1"	47	6'-1"
x1	#4	8	3'-10"	8	4'-2"	8	4'-6"	8	4'-10"	8	5'-2"

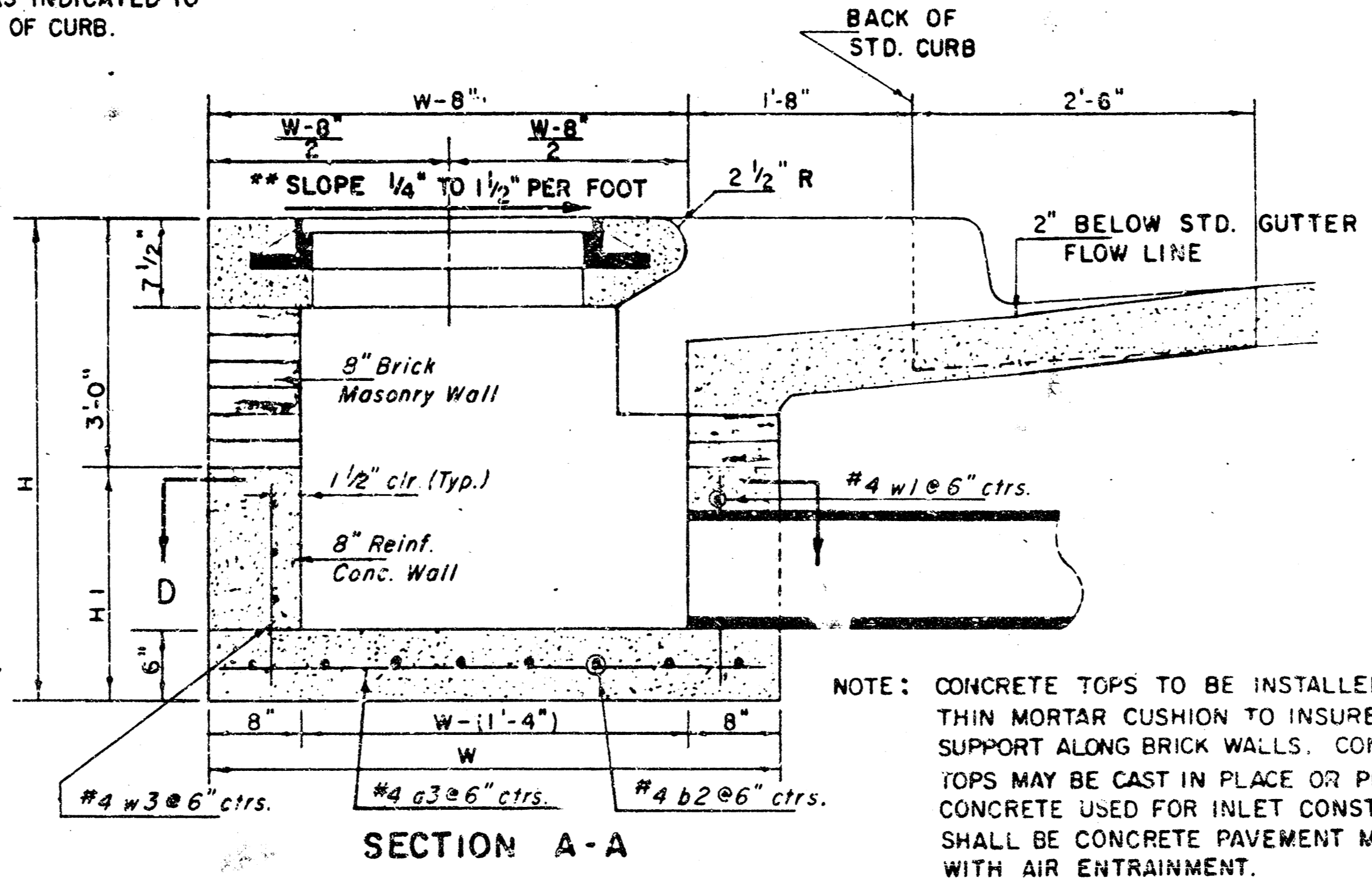
WALL REINFORCING

Mark	Size	W=4'-4"		W=5'-4"		W=6'-4"		W=7'-4"		W=8'-4"	
		No.	Length	No.	Length	No.	Length	No.	Length	No.	Length
w1	#4	1	6'-1"	1	6'-1"	1	6'-1"	1	6'-1"	1	6'-1"
w2	#4	1	4'-1"	1	5'-1"	1	6'-1"	1	7'-1"	1	8'-1"
w3	#4	32	2	36	2	40	2	44	2	48	2

- * Field bend or cut Reinforcing as required for clearance.
- ① 4(HI-12"); (HI-12") Round down to nearest 0.5"
- ② HI-3"



NOTE: INLET TOP REINFORCING SHALL BE SPACED ON 6" MAX. CENTERS. INLET LIDS SHALL BE NOTCHED OUT AS INDICATED TO FACILITATE CONSTRUCTION OF CURB.



NOTE: CONCRETE TOPS TO BE INSTALLED ON THIN MORTAR CUSHION TO INSURE FULL SUPPORT ALONG BRICK WALLS. CONCRETE TOPS MAY BE CAST IN PLACE OR PRECAST. CONCRETE USED FOR INLET CONSTRUCTION SHALL BE CONCRETE PAVEMENT MIX WITH AIR ENTRAINMENT.

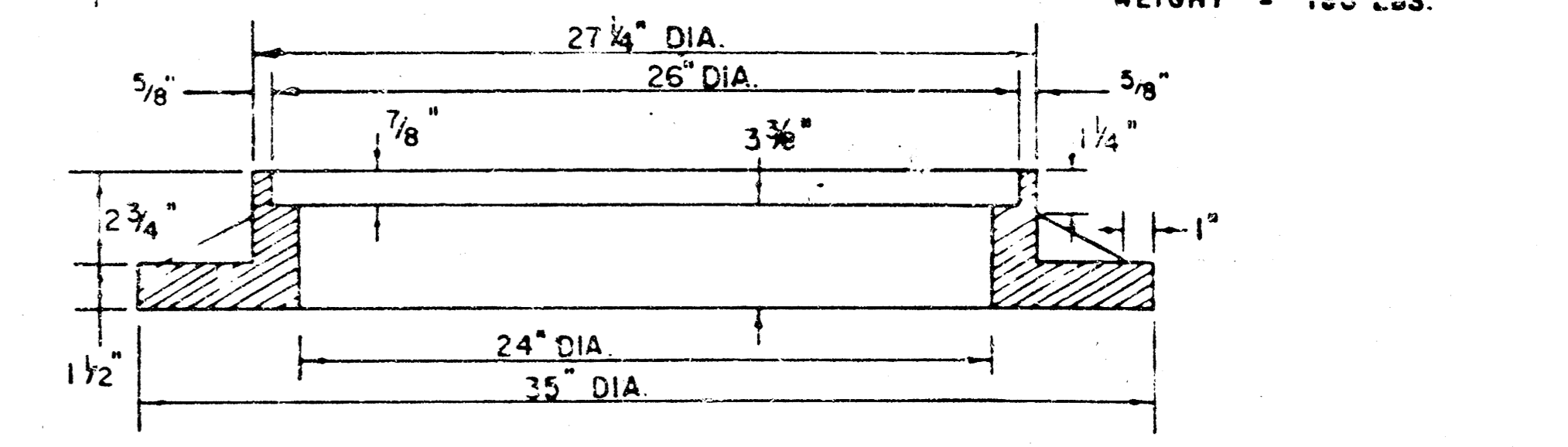
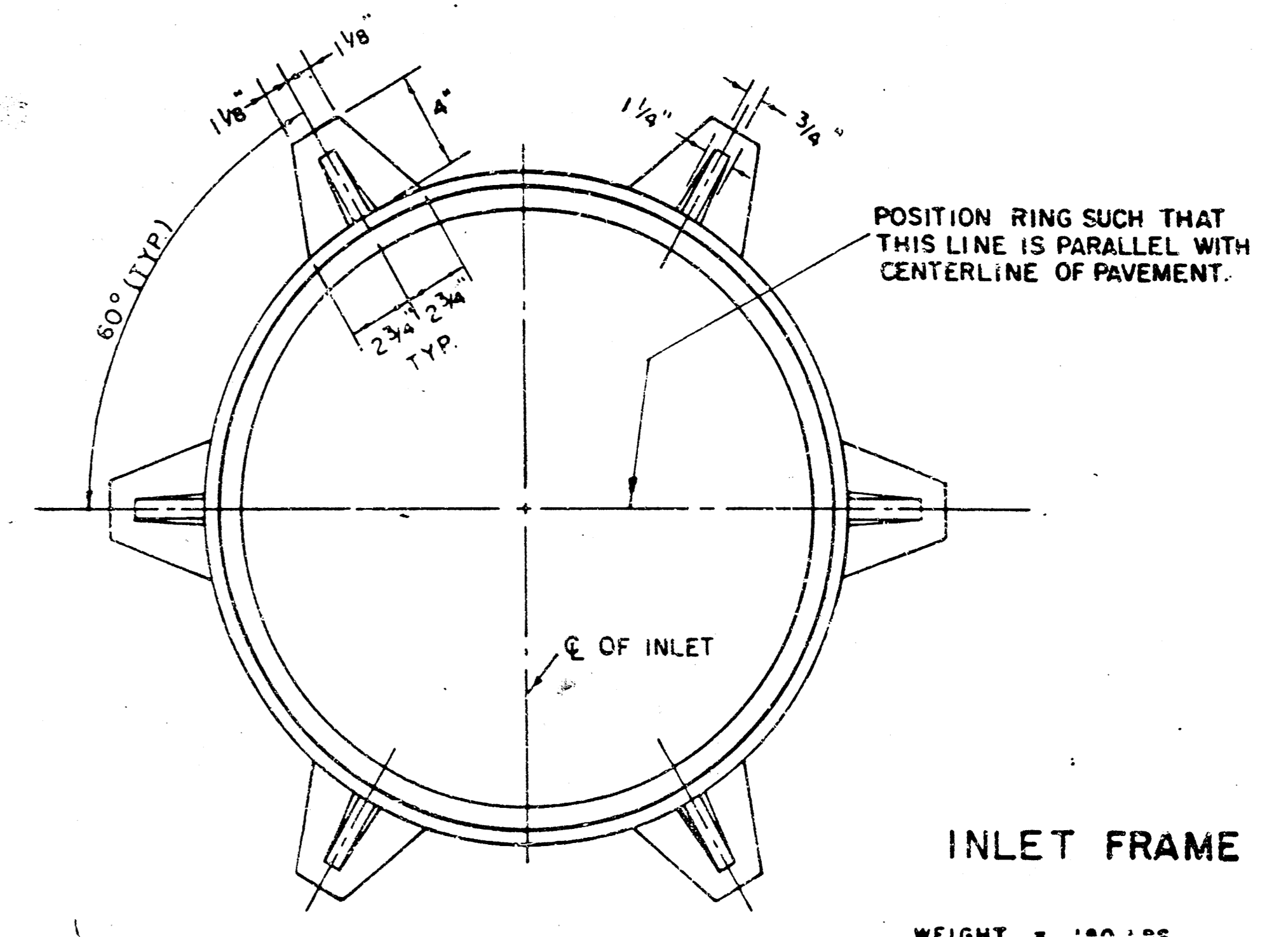
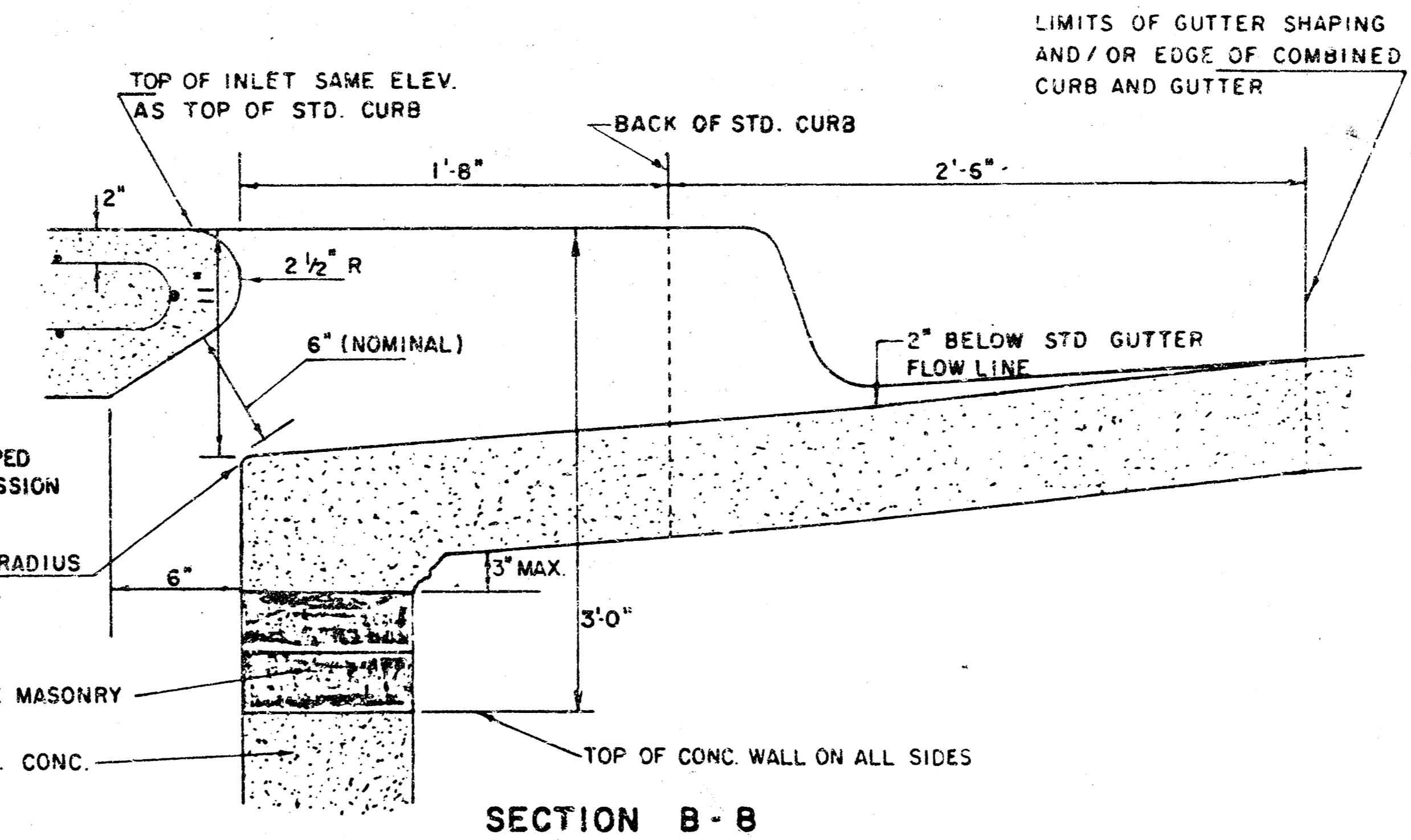
NOTE: CONTRACTOR SHALL HAVE THE OPTION OF CONSTRUCTING 8" BRICK MASONRY WALLS BETWEEN THE CONCRETE INLET BASE AND TOP ON THIS INLET WHEN W = 6'-4" AND H = 7'-0" OR LESS.

ADDITIONAL CURB AND GUTTER CONSTRUCTION NECESSARY TO CONNECT SET-BACK INLET TO PAVEMENT WILL BE PAID FOR AT THE UNIT PRICE BID FOR EACH INLET HOOKUP.

INLET INVERT SHALL BE SHAPED WITH 8 SACK SAND MIX CONCRETE TO CREATE FLOW CHANNELS AND TO INCREASE HYDRAULIC EFFICIENCY SUCH THAT THE INLET WILL BE SELF-CLEANING BETWEEN ALL INLET AND/OR OUTLET PIPES.

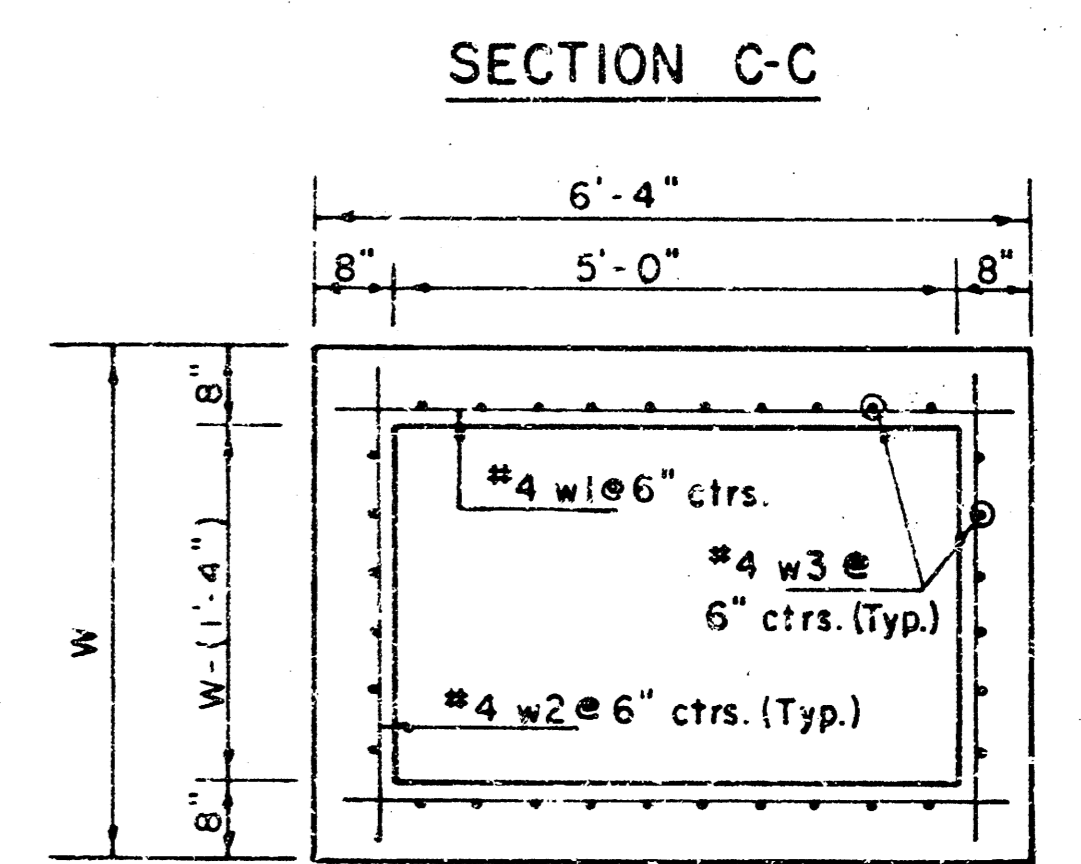
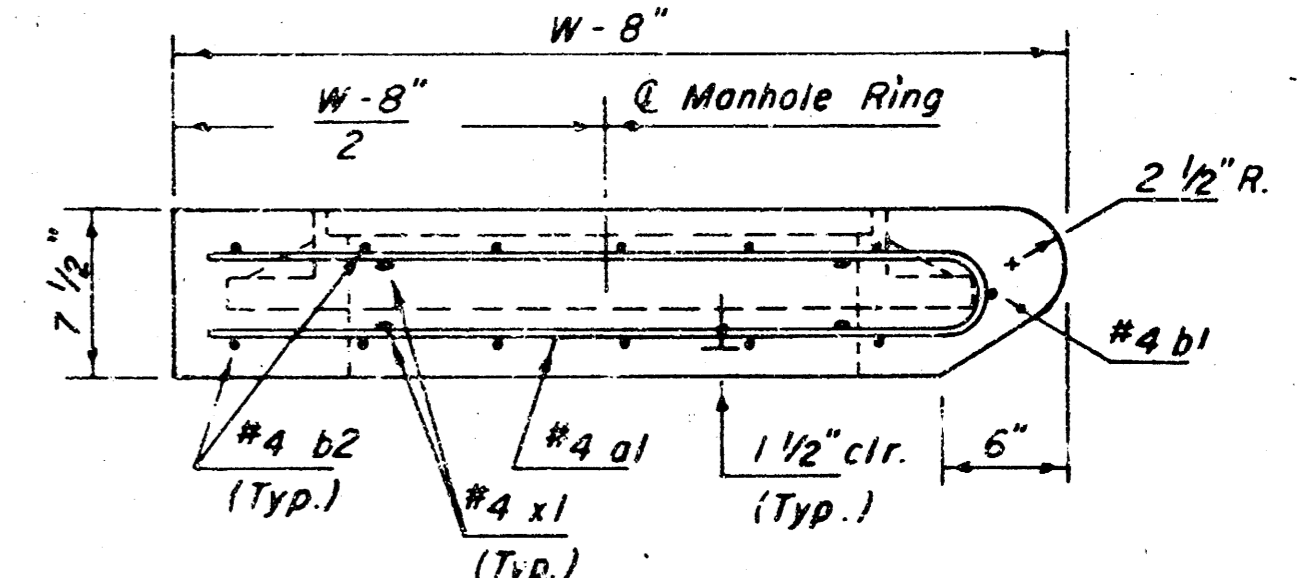
THE ENDS OF ALL PIPES INSTALLED IN INLETS SHALL BE CUT OFF FLUSH WITH THE INSIDE FACE OF THE INLET WALL.

** NOTE: Slope of Inlet Tops to match Sidewalk or Parking Slopes within Limits indicated.



SEE CITY OF WICHITA STANDARD MANHOLE FRAME AND COVER DETAIL SHEET FOR COVER DETAILS TO BE USED WITH INLET FRAME.

NOTE: 4" PVC Stub to be installed by Storm Sewer Contractor. Stub will be connected to Underdrain Pipe by Paving Contractor.



REVISED 11-30-1988
REVISED 12-21-1984
Revised 2-16-1989

DETAIL STANDARD TYPE IA CURB INLET
CITY OF WICHITA, KANSAS
INLET OPENING = 6" x 5' 0"

THE MOORINGS-PHASE 3
PROJECT NO. 468-82134
INDEX CODE 750463

JUNE 1984

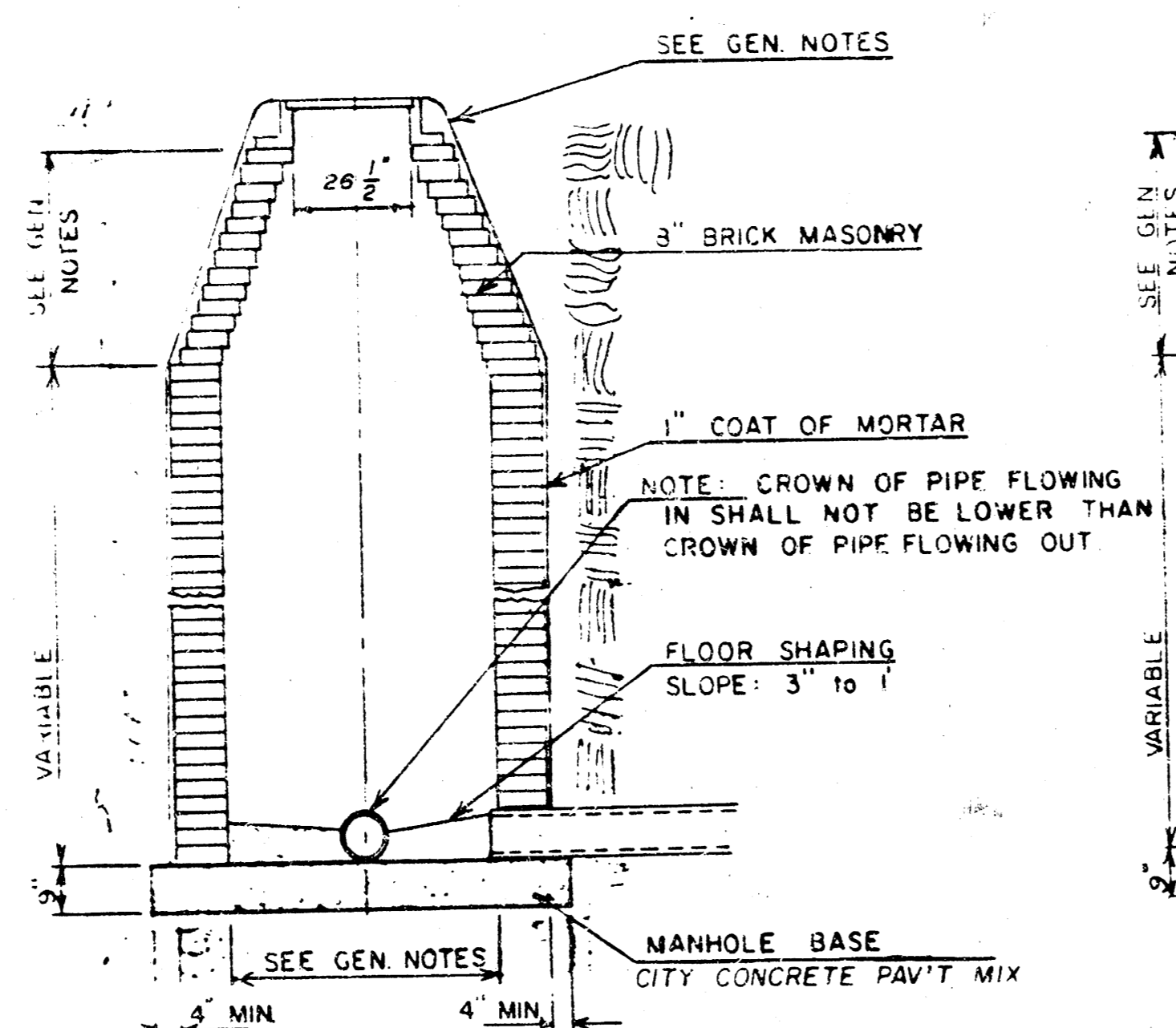
SEWER APPURTENANCES DETAILS

ADOPTED AS STANDARD DESIGN
BY

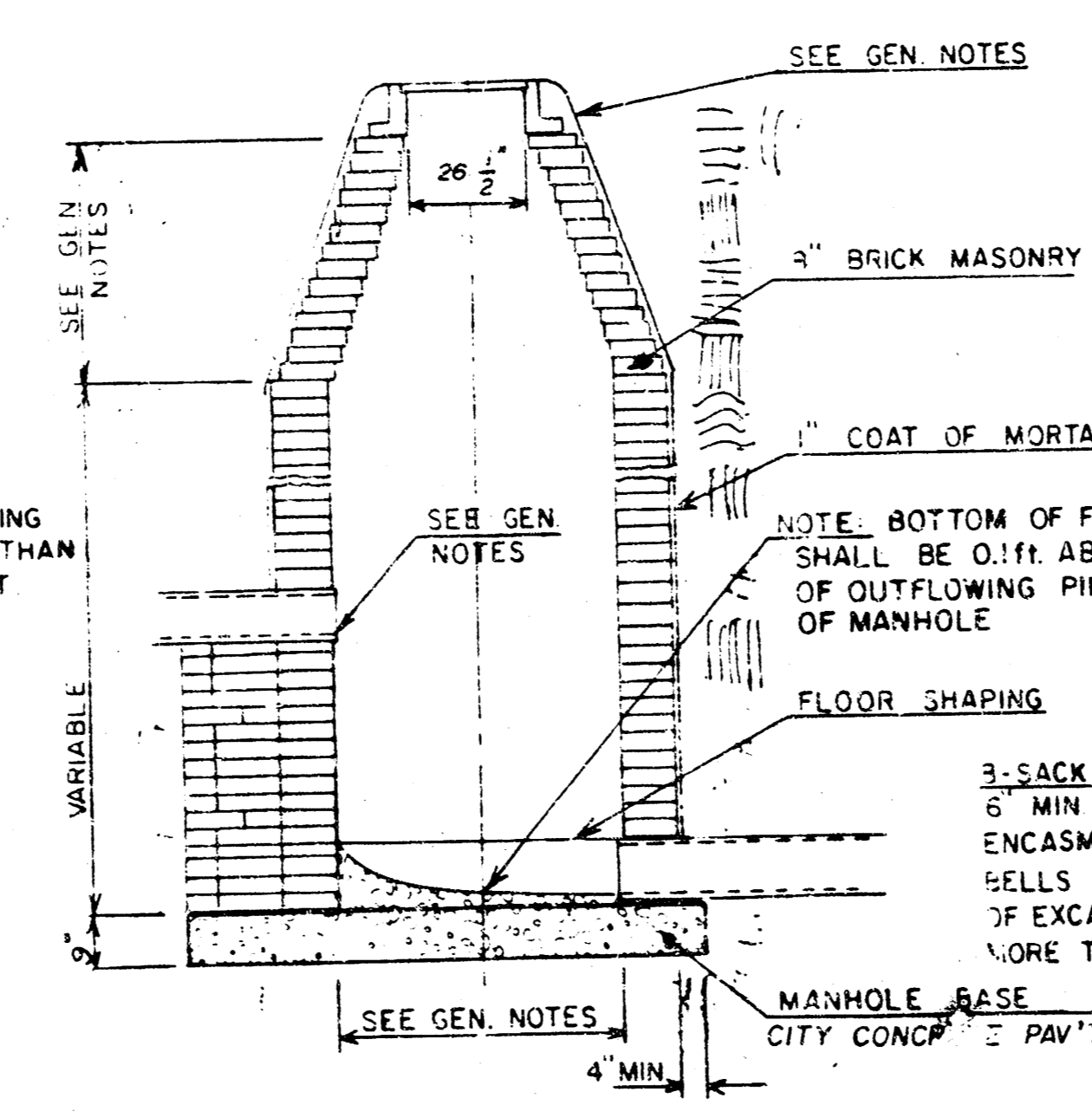
CITY of WICHITA, KANSAS

REVISED SEPTEMBER 1980
REVISED DECEMBER 1981

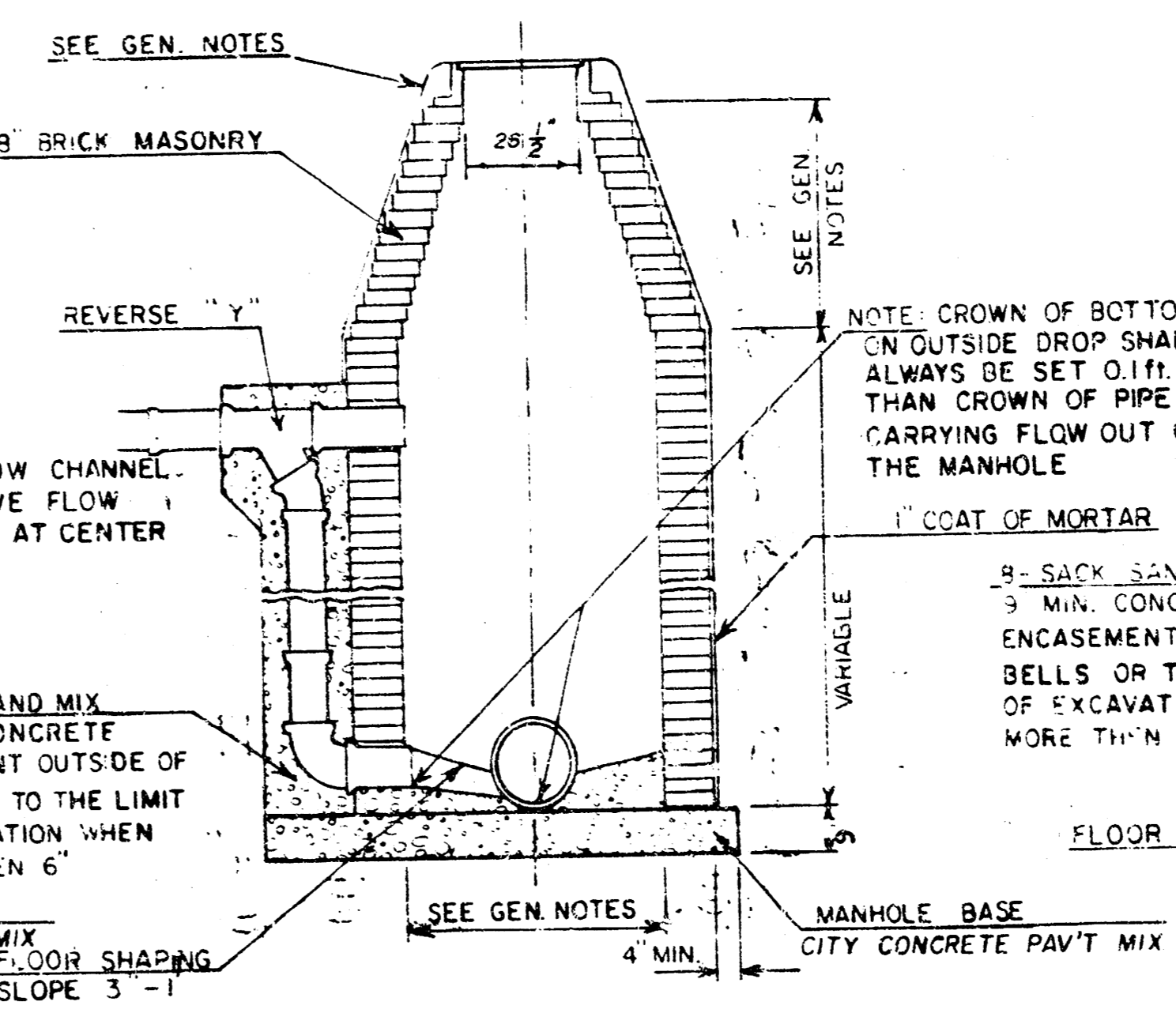
TYPE "A" MANHOLE



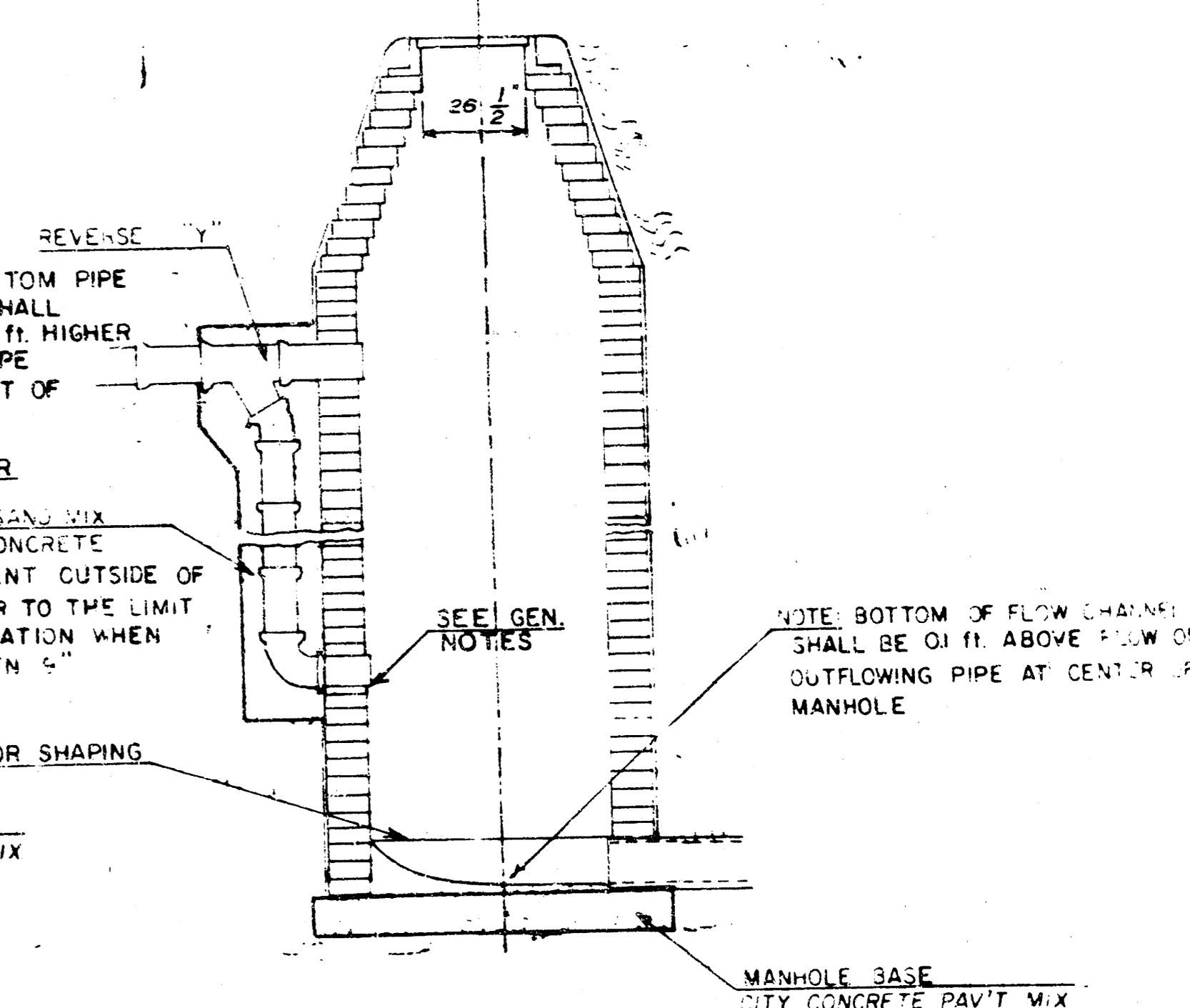
TYPE "A" INSIDE DROP MANHOLE



TYPE "A" OUTSIDE DROP MANHOLE



DETAIL OF OUTSIDE DROP
CONSTRUCTED ON EXISTING MANHOLE



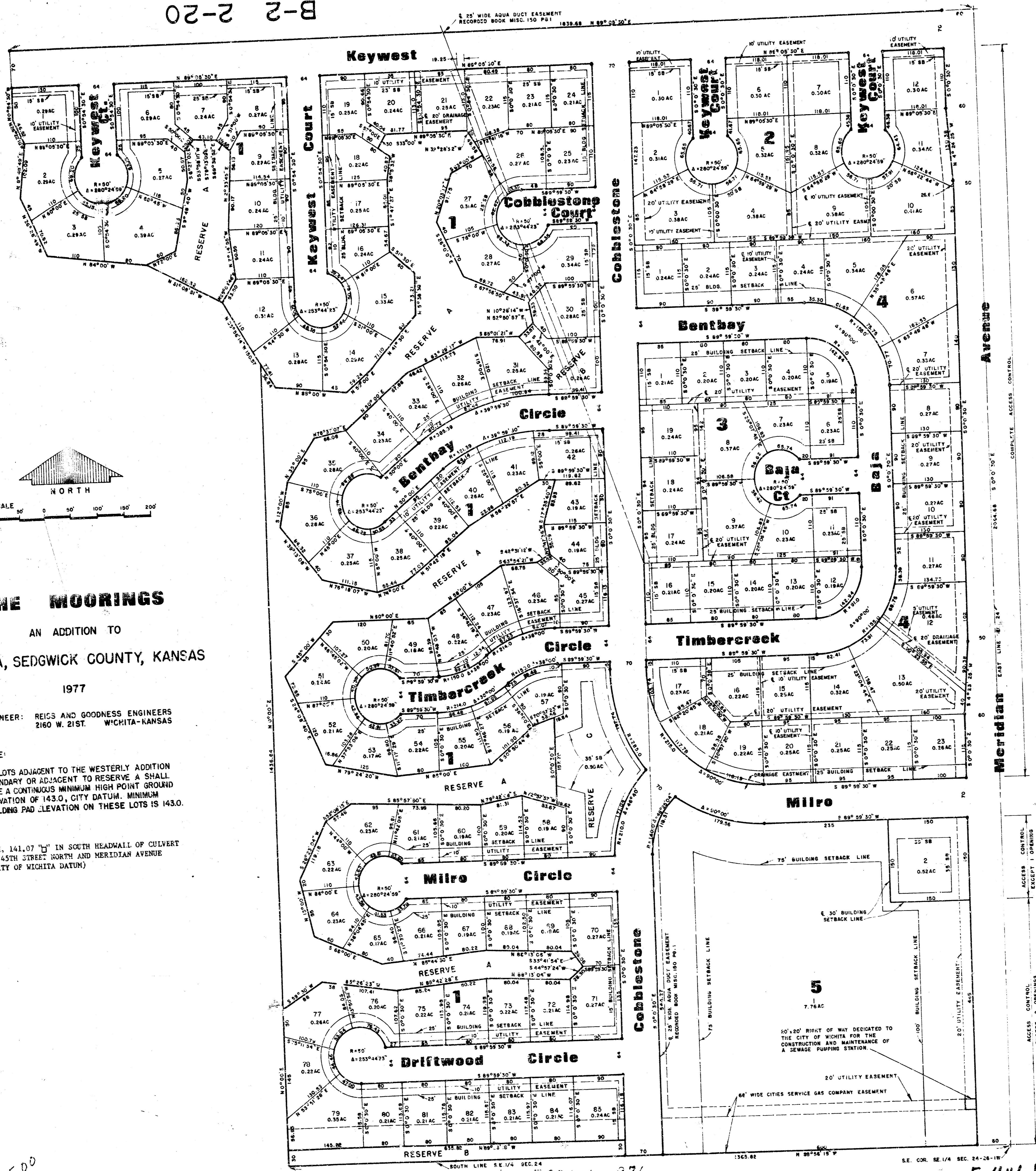
GENERAL NOTES

- MORTAR USED IN MASONRY CONSTRUCTION SHALL CONTAIN 8 SACKS OF CEMENT PER CUBIC YARD. CONCRETE USED IN MANHOLE BASES SHALL CONFORM TO THE REQUIREMENTS OF CONCRETE FOR CONCRETE PAVEMENT CONSTRUCTION AS SPECIFIED IN THE CITY STANDARD PAVING SPECIFICATIONS USING CITY CONCRETE PAVEMENT MIX WITHOUT AIR ENTRAINING ADMIXTURE. MORTAR SHALL BE PLACED AROUND THE MANHOLE RING AS SHOWN ON THE DRAWINGS WHEN MANHOLES ARE CONSTRUCTED IN UNPAVED AREAS. TYPE "A" MANHOLES CAN BE USED ON PAVEMENT UP TO 16" IN DEPTH WHEN THE MANHOLE IS NOT LOCATED WITHIN PUBLIC STREET PAVEMENT. MANHOLES CONSTRUCTED WHERE PIPE SIZES ARE SMALLER THAN 24" SHALL HAVE AN INSIDE DIAMETER OF 4". MANHOLES CONSTRUCTED WHERE PIPE SIZES ARE 24" OR LARGER SHALL HAVE AN INSIDE DIAMETER OF 5". THE HEIGHT OF THE CORBELS ON 4" DIAMETER MANHOLES SHALL BE 4". MANHOLES HAVING A DIAMETER OF 5" SHALL HAVE CORBELS 6" IN HEIGHT. COMPLETED MANHOLE SHALL BE WITHOUT LEAKS AND WATER TIGHT.
- REINFORCING STEEL SHALL BE INSTALLED IN THE MANHOLE BASES AND SHALL CONSIST OF NO. 4 BARS PLACED ON 5" CENTERS IN BOTH DIRECTIONS. THE MANHOLE BASE REINFORCEMENT SHALL BE PLACED 4" ABOVE THE BOTTOM OF THE MANHOLE BASE. ALL COSTS FOR FURNISHING AND INSTALLING REINFORCING STEEL SHALL BE INCLUDED IN THE UNIT PRICE BID FOR THE MANHOLE.
- OPENINGS SHALL BE CUT INTO THE MANHOLE WALL WHEN OUTSIDE DROPS ARE CONSTRUCTED ON EXISTING MANHOLES. SUCH OPENINGS CUT INTO EXISTING MANHOLES SHALL BE AS SMALL AS PRACTICAL TO FACILITATE INSTALLING AND ADJUSTING THE NEW PIPE IN PLACE. WATERSTOP GASKETS SHALL BE USED WITH P.V.C. AND A.S.S. COMPOSITE PIPE. THE NEW PIPE SHALL BE GROUTED INTO THE OPENING USING AN APPROVED NONSHRINK GROUT FOR THE FULL MANHOLE WALL THICKNESS. THE EXTERIOR OF THE COMPLETED CONNECTION SHALL BE SEALED WITH AN APPROVED BITUMINOUS COATING SUCH THAT THE CONNECTION WILL BE WATER TIGHT. FLOOR OF MANHOLE SHALL BE MODIFIED TO FORM NEW FLOW CHANNEL FOR THE NEW CONNECTION AS INDICATED BY THE DRAWING. THE VERTICAL DROP FROM THE LOWER PIPE IN SUCH OUTSIDE DROP CONNECTIONS SHALL NOT EXCEED 4' FOR INFLOWING PIPES SIZED 12" OR SMALLER AND 2' FOR INFLOWING PIPES SIZED LARGER THAN 12". EXCEPT THE CROWN OF THE LOWER PIPE SHALL NEVER BE SET BELOW THE CROWN OF ANY LARGER OUTFLOWING PIPE. THIS WORK, INCLUDING IDENTIFICATION OF MANHOLE FLOOR, SHALL BE PAID FOR AT THE UNIT PRICE BID FOR OUTSIDE DROP STACK CONSTRUCTED ON EXISTING MANHOLE.
- THE FLOORS OF ALL MANHOLES SHALL BE GRADED WITH FLOW CHANNELS SUCH THAT THE MANHOLES WILL BE SELF-CLEANING AND FREE OF AREAS WHERE SOLIDS COULD BE DEPOSITED AS SEWAGE FLOWS THROUGH THE MANHOLE FROM ALL INLET PIPES TO THE OUTLET PIPE. FLOW CHANNELS SHALL BE FORMED TO MATCH THE BOTTOM HALVES OF THE INFLOWING PIPES AND THE OUTFLOWING PIPE AS SHOWN BY THE DRAWINGS EXCEPT FOR INSIDE DROP MANHOLES. FLOW CHANNELS FOR INSIDE DROP MANHOLES SHALL BE CONSTRUCTED AS INDICATED BY THE DRAWING. MANHOLE FLOORS SHALL HAVE SLOPES OF 3 INCHES PER FOOT IN THE AREAS OUTSIDE OF THE FLOW CHANNELS SLOPED TOWARD THE FLOW CHANNELS. PIPES LAID THROUGH MANHOLES SHALL HAVE THE TOP HALF REMOVED TO NEAT LINES FOR THE FULL INSIDE DIAMETER OF THE MANHOLE. MANHOLE FLOORS SHALL THEN BE SHAPED AROUND THE BOTTOM HALF OF THE PIPE WHICH FORMS THE FLOW CHANNEL.
- PIPES INSTALLED WITHIN THE EXCAVATION MADE FOR THE MANHOLE SHALL BE CRADLED WITH CONCRETE TO THE LIMITS OF THE MANHOLE EXCAVATION. WHEN CLAY PIPE IS USED, THE CRADLE SHALL EXTEND TO THE FIRST JOINT OUTSIDE THE MANHOLE. THE CRADLE SHALL BE TERMINATED AT THE CLAY PIPE JOINT IN A MANNER WHICH WILL MAINTAIN THE FLEXIBILITY OF THE JOINT. COST OF CRADLE WITHIN MANHOLE EXCAVATION OR TO CLAY PIPE JOINTS ADJACENT TO MANHOLE SHALL BE INCLUDED IN THE UNIT PRICE BID FOR THE MANHOLE.
- MANHOLE COVER CASTINGS AND MANHOLE FRAME CASTINGS SHALL CONFORM TO THE REQUIREMENTS AS INDICATED IN THE STANDARD SPECIFICATIONS AND AS SHOWN IN THE STANDARD DETAIL DRAWING.
- THE VERTICAL FREE FALL DROP INSIDE MANHOLES SHALL NOT EXCEED 2'. THE CROWNS OF INFLOWING PIPES SHALL NEVER BE SET LOWER THAN THE CROWN OF THE OUTFLOWING PIPES.
- STANDARD MANHOLES TYPE "A" AND STANDARD INSIDE DROP MANHOLES TYPE "A" SHALL BE BID AS STANDARD MANHOLES FOR THE TYPE AND DIAMETER INDICATED. OUTSIDE DROP MANHOLES TYPE "A" SHALL BE BID AS STANDARD INSIDE DROP MANHOLES FOR THE TYPE AND DIAMETER INDICATED. ALL MANHOLE DIAMETERS WILL BE 4' UNLESS INDICATED OTHERWISE.

THE MOORINGS - PHASE 3
PROJECT NO. 465-82134
INDEX CODE 750463

NOTE NO. 7 REVISED JAN. 1991

B-2 2-20



THE MOORINGS
 AN ADDITION TO
 WICHITA, SEDGWICK COUNTY, KANSAS
 1977

ENGINEER: REIGS AND GOODNESS ENGINEERS
 2160 W. 21ST. WICHITA-KANSAS

NOTE:
 LOTS ADJACENT TO THE WESTERLY ADDITION
 BOUNDARY OR ADJACENT TO RESERVE A SHALL
 HAVE A CONTINUOUS MINIMUM HIGH POINT GROUND
 ELEVATION OF 143.0, CITY DATUM. MINIMUM
 BUILDING PAD ELEVATION ON THESE LOTS IS 143.0.

8.M. 141.07' IN SOUTH HEADWALL OF CULVERT
 AT 45TH STREET NORTH AND MERIDIAN AVENUE
 (CITY OF WICHITA DATUM)

25.00

Restrictive Covenants F 274 pg. 976

F 414, Page 843

STATE OF KANSAS)
 COUNTY OF SEDGWICK) SS.
 I, KERRY E. HILL, BEING A DULY LICENSED PROFESSIONAL ENGINEER IN SAID COUNTY AND STATE, DO HEREBY CERTIFY THAT I HAVE CAUSED
 TO BE SURVEYED AND PLATTED, THE MOORINGS, AN ADDITION TO WICHITA, SEDGWICK COUNTY, KANSAS, DESCRIBED AS FOLLOWS: BEGINNING
 AT THE SOUTHWEST CORNER OF THE SE 1/4 OF SECTION 24, T. 26 S., R. 1 W. OF THE 6TH P.M. SEDGWICK COUNTY, KANSAS; THENCE N 89°
 56' 13" W 1365.82 FEET ON THE SOUTH LINE OF SAID SE 1/4; THENCE N 0° 00' E 1436.64 FEET; THENCE N 33° 56' 14" W 150.37 FEET;
 THENCE N 61° 08' 51" W 161.32 FEET; THENCE N 84° 00' W 190.0 FEET; THENCE N 26° 28' 48" E 115.92 FEET; THENCE N 8° 48' 45" E
 102.09 FEET; THENCE N 26° 22' 18" W 46.52 FEET; THENCE N 0° 50' 30" W 128.0 FEET; THENCE N 89° 05' 30" E 1839.68 FEET TO THE
 EAST LINE OF SAID SE 1/4; THENCE S 0° 0' 30" E 2064.68 FEET, TO THE POINT OF BEGINNING, CONTAINING 69.50 ACRES MORE OR LESS.
 THE BEARING OF THE CENTERLINE OF MERIDIAN AVENUE IS ASSUMED TO BE S 0° 0' 30" E. THE ACCOMPANYING PLAT IS A TRUE AND CORRECT
 EXHIBIT OF PROPERTY SURVEYED.
 KERRY E. HILL (SEAL)
 DATED THIS 23RD DAY OF AUGUST, 1977.

KNOW ALL MEN BY THESE PRESENTS:
 THAT WE, V. HARLEY MILES AND RO JEAN MILES, HIS WIFE, HAVE CAUSED THE LAND DESCRIBED IN THE ENGINEER'S CERTIFICATE TO BE
 PLATTED INTO LOTS, BLOCKS, RESERVES AND STREETS. EASEMENTS ARE HEREBY GRANTED AS INDICATED FOR UTILITY AND DRAINAGE CON-
 STRUCTURE AND MAINTENANCE. STREETS ARE HERE DEDICATED TO AND FOR THE USE OF THE PUBLIC. ALL ABUTTER'S RIGHTS OF ACCESS
 TO OR FROM MERIDIAN AVENUE OVER AND ACROSS THE EAST LINE OF BLOCK 2, BLOCK 4, AND BLOCK 5, EXCEPT AS SHOWN ON THE ACCOM-
 PANYING PLAT, ARE HEREBY GRANTED TO THE APPROPRIATE GOVERNING BODY. RESERVES A AND B ARE TO BE OWNED AND MAINTAINED BY
 ALSO FOR CONSTRUCTION AND MAINTENANCE OF A LAKE. RESERVE C IS FOR CONSTRUCTION OF A SALES AND DEVELOPMENT OFFICE, RESTAURANT,
 SUPPER CLUB AND/OR COMMUNITY ACTIVITY CENTER.
 V. HARLEY MILES (SEAL)
 RO JEAN MILES (SEAL)

STATE OF KANSAS)
 COUNTY OF SEDGWICK) SS.
 BE IT REMEMBERED THAT ON THIS 23rd DAY OF August, 1977, BEFORE ME, A NOTARY PUBLIC IN AND FOR SAID COUNTY
 AND STATE, CAME V. HARLEY MILES AND RO JEAN MILES, HIS WIFE, TO ME KNOWN TO BE THE SAME PERSONS WHO EXECUTED THE FORE-
 GOING INSTRUMENT OF WRITING AND DULY ACKNOWLEDGED THE SAME AS THEIR VOLUNTARY ACT AND DEED. IN TESTIMONY WHEREOF I HAVE
 HEREUNTO SET MY HAND AND AFFIXED MY NOTARIAL SEAL THE DAY AND YEAR ABOVE WRITTEN.
 JUDY A. P. (SEAL)
 MY COMMISSION EXPIRES Aug. 19, 1981

THIS PLAT OF THE MOORINGS, AN ADDITION TO SEDGWICK COUNTY, KANSAS HAS BEEN SUBMITTED TO AND APPROVED BY THIS WICHITA-
 SEDGWICK COUNTY METROPOLITAN AREA PLANNING COMMISSION, WICHITA, KANSAS.
 DATED THIS 17th DAY OF March, 1977.
 WICHITA-SEGWICK COUNTY METROPOLITAN AREA
 PLANNING COMMISSION
 William J. Goebel (SEAL) CHAIRMAN
 Robert A. Lakin (SEAL) SECRETARY

THIS PLAT APPROVED AND THE DEDICATIONS SHOWN HEREON ACCEPTED BY THE CITY COMMISSIONERS OF THE CITY OF WICHITA, KANSAS
 THIS 11th DAY OF OCT, 1977.
 TONY GASADO (SEAL) MAYOR
 DONALD C. GIDICK (SEAL) CITY CLERK

THIS PLAT APPROVED AND THE DEDICATIONS SHOWN HEREON ACCEPTED BY THE BOARD OF COUNTY COMMISSIONERS OF SEDGWICK COUNTY,
 KANSAS, THIS 1st DAY OF November, 1977.
 TOM SCOTT (SEAL) CHAIRMAN
 JOHN HALE (SEAL) COMMISSIONER
 EVERETT PATRICK (SEAL) COMMISSIONER

ATTEST:
 DOROTHY K. WHITE (SEAL) COUNTY CLERK
 ENTERED ON TRANSFER RECORD THIS 2 DAY OF December, 1977

STATE OF KANSAS)
 COUNTY OF SEDGWICK) SS.
 THIS IS TO CERTIFY THAT THIS INSTRUMENT WAS FILED FOR RECORD IN THE REGISTER OF DEEDS OFFICE AT 9:30 A.M. on
 THE 24th DAY OF November, 1977.
 Correlation Affidavit F1262-PAGE 283
 BETTE F. MCCART (SEAL) REGISTER OF DEEDS

THE MOORINGS - PHASE 3
 PROJ. NUMBER 468-82134
 INDEX CODE 750463
 AMELIA PEARL (SEAL) DEPUTY REGISTER OF DEEDS

10-1-33