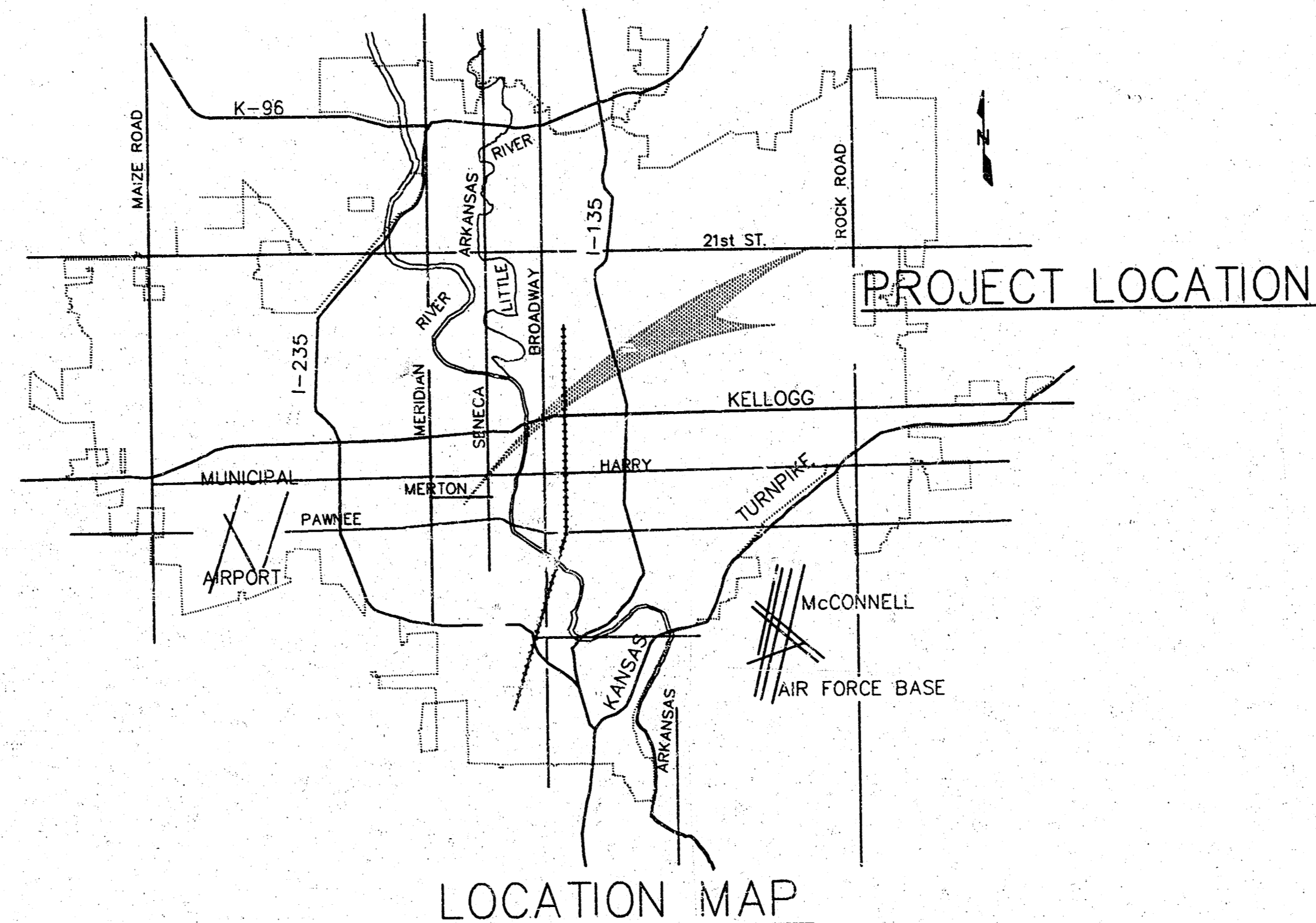


# CONSTRUCTION PLANS FOR STORM WATER SEWER NO. 454 TO SERVE LOT 1 IN MERTON AVENUE-CREW ADDITION THE CITY OF WICHITA, SEDGWICK COUNTY, KANSAS MICHAEL E. LINDEBAK, P.E. - CITY ENGINEER

**GENERAL NOTES**

1. CONTRACTOR WILL BE REQUIRED TO PROVIDE A MINIMUM ADVANCE NOTICE OF TWENTY-FOUR (24) HOURS TO UTILITY COMPANIES PRIOR TO STARTING ANY EXCAVATION AS FOLLOWS:  
THE CONTRACTOR MUST NOTIFY THE FOLLOWING IN CASE OF AN EMERGENCY:  
  

CABLEVISION	316-262-4270 OR 263-2061
ARKLA GAS	316-942-8350 OR 263-8161
CITY OF WICHITA	
WATER	316-268-4908
SANITARY & STORM SEWER	316-268-4210
KANSAS ONE-CALL	1-800-344-7233 OR 687-2470
KG&E, THE ELECTRIC CO.	316-264-1141
KG&E GAS SERVICE	316-263-7511
SOUTHWESTERN BELL TELEPHONE	1-571-2611
2. THE CONTRACTOR SHALL NOTIFY PIPELINE COMPANIES AT LEAST 24 HOURS IN ADVANCE OF ANY WORK BEING PERFORMED ACROSS AND/OR ADJACENT TO PIPELINES.
3. INTERURBAN TRAFFIC GENERATED OUTSIDE THE PROJECT AREA IS NOT TO BE CARRIED THROUGH CONSTRUCTION. LOCAL BUSINESS OR APARTMENT TRAFFIC GENERATED WITHIN THE PROJECT AREA IS TO BE CARRIED THROUGH CONSTRUCTION AS FURTHER PROMULGATED BY PROJECT SPECIAL PROVISIONS. AT LEAST ONE LANE OF TRAFFIC SHALL BE MAINTAINED THROUGH CONSTRUCTION.
4. UNDERGROUND UTILITY SERVICE LINES AND OVERHEAD UTILITY POLE LINES ARE TO BE ADJUSTED AS NECESSARY BY OTHERS PRIOR TO CONSTRUCTION UNLESS THE PLANS SPECIFICALLY CALL FOR THEIR ADJUSTMENT BY THE CONTRACTOR OR UNLESS THE PLANS SPECIFICALLY IDENTIFY A UTILITY TO BE ADJUSTED BY ITS OWNER DURING CONSTRUCTION. EXISTING UTILITIES AND THEIR LOCATION, AS SHOWN ON THE PLANS, REPRESENT THE BEST INFORMATION OBTAINABLE FOR DESIGN. LOCATION INFORMATION HAS BEEN OBTAINED FROM THE VARIOUS UTILITY COMPANIES AND IS EITHER FROM COMPANY RECORD DRAWINGS OR COMPANY PROVIDED FIELD LOCATIONS. THE CONTRACTOR WILL BE REQUIRED TO WORK AROUND EXISTING UTILITIES WITHIN THE RIGHT-OF-WAY WHICH DO NOT CONFLICT WITH PROPOSED CONSTRUCTION.
5. RUBBLE FROM THE REMOVAL OF MISCELLANEOUS STRUCTURES AND EXCESS EXCAVATION WHICH IS TO BE WASTED SHALL BE DISPOSED OF ON SITES TO BE PROVIDED BY THE CONTRACTOR. THESE SITES SHALL BE APPROVED BY THE ENGINEER AS TO SUITABILITY, APPEARANCE AND SITE LOCATION. LOCATIONS THAT, IN THE OPINION OF THE ENGINEER, WILL LEAVE AN UNSIGHTLY APPEARANCE WILL NOT BE APPROVED.  
  
ALL DISPOSAL SITES MUST BE APPROVED BY THE KANSAS DEPARTMENT OF HEALTH AND ENVIRONMENT. MATERIAL EITHER STOCKPILED OR DISPOSED OF IN A FLOOD PLAIN WOULD REQUIRE A KANSAS STATE BOARD OF AGRICULTURE PERMIT. ANY MATERIAL DUMPED IN WATERS OF THE UNITED STATES OR WETLANDS IS SUBJECT TO U.S. CORPS. OF ENGINEERS PERMITTING REGULATIONS. ANY MATERIAL BURIED OR STOCKPILED BEYOND APPROVED CONSTRUCTION LIMITS WOULD REQUIRE ADDITIONAL ARCHAEOLOGICAL INVESTIGATIONS UNLESS BURIED IN A PREVIOUSLY APPROVED BORROW LOCATION.
6. PROPERTIES WITHIN THE PROJECT LIMITS MAY BE UNDERGROUND SPRINKLER SYSTEMS IN PUBLIC RIGHT-OF-WAY WHICH CONFLICT WITH NEW CONSTRUCTION. CONTRACTOR WILL BE REQUIRED TO REMOVE SUCH IMPROVEMENTS SHOULD THEY NOT BE REMOVED BY THEIR OWNER AT THE TIME OF CONSTRUCTION OF THE PROJECT. THE CONTRACTOR WILL BE REQUIRED TO SALVAGE ALL SPRINKLER HEADS AND/OR VALVES AND TO GIVE SUCH MATERIAL TO THEIR OWNER. PORTIONS OF UNDERGROUND SPRINKLER SYSTEMS NOT IN CONFLICT WITH NEW CONSTRUCTION SHALL BE PROTECTED FROM DAMAGE AND SHALL REMAIN IN PLACE. ALL WORK IN CONNECTION WITH UNDERGROUND SPRINKLER SYSTEMS SHALL BE CONSIDERED AS SUBSIDIARY TO THE CONTRACTOR'S PAY ITEMS OF WORK.
7. TREES AND SHRUBS IN PUBLIC RIGHT-OF-WAY WHICH ARE IN DIRECT CONFLICT WITH PROPOSED NEW CONSTRUCTION SHALL BE REMOVED BY THE CONTRACTOR WITH THE ENGINEER'S APPROVAL. TREES AND SHRUBS WHICH ARE NOT IN DIRECT CONFLICT WITH PROPOSED NEW CONSTRUCTION SHALL BE SAVED AND PROTECTED FROM DAMAGE.
8. THE CONTRACTOR SHALL GIVE ALL PROPERTY OWNERS AND/OR TENANTS OF DEVELOPED PROPERTY DIRECTLY ADJUTING THE CONSTRUCTION OF THIS PROJECT A MINIMUM OF TEN (10) DAYS ADVANCE NOTICE PRIOR TO START OF CONSTRUCTION.
9. THE CONTRACTOR SHALL BE RESPONSIBLE FOR PRESERVING PROPERTY IRONS. THE CONTRACTOR WILL BE REQUIRED TO RE-ESTABLISH ANY PROPERTY IRONS WHICH ARE DAMAGED OR DESTROYED BY HIS CONSTRUCTION OPERATIONS. SUCH IRONS SHALL BE RE-ESTABLISHED BY A LICENSED LAND SURVEYOR OR A LICENSED PROFESSIONAL ENGINEER IN ACCORDANCE WITH STATE LAWS.

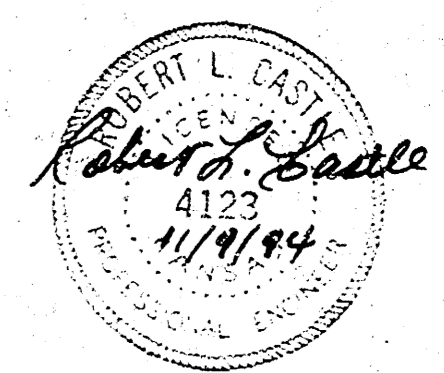


**DRAWING INDEX**

SHEET NO. 1	TITLE SHEET
SHEET NO. 2	PLAN/PROFILE
SHEET NO. 3	STANDARD MANHOLE DETAIL
SHEET NO. 4	STANDARD DROP INLET DETAIL

INDEX NO. 750596  
CITY OF WICHITA PROJECT NO. 468 82410  
OCTOBER 1994  
PLANS PREPARED BY  
CASTLE & ASSOCIATES  
WICHITA, KANSAS

BOOKED  
3-21-95  
A-153  
MCG



CITY OF WICHITA WATER DISTRIBUTION SYSTEM IMPROVEMENTS	
TITLE SHEET	
CASTLE & ASSOCIATES ENGINEERS WICHITA, KANSAS	DSG DR CH APP
DATE OCTOBER 1994	DWG FILE NO 9431 - D - 70,032 SHEET NO 1 OF 4 REV.

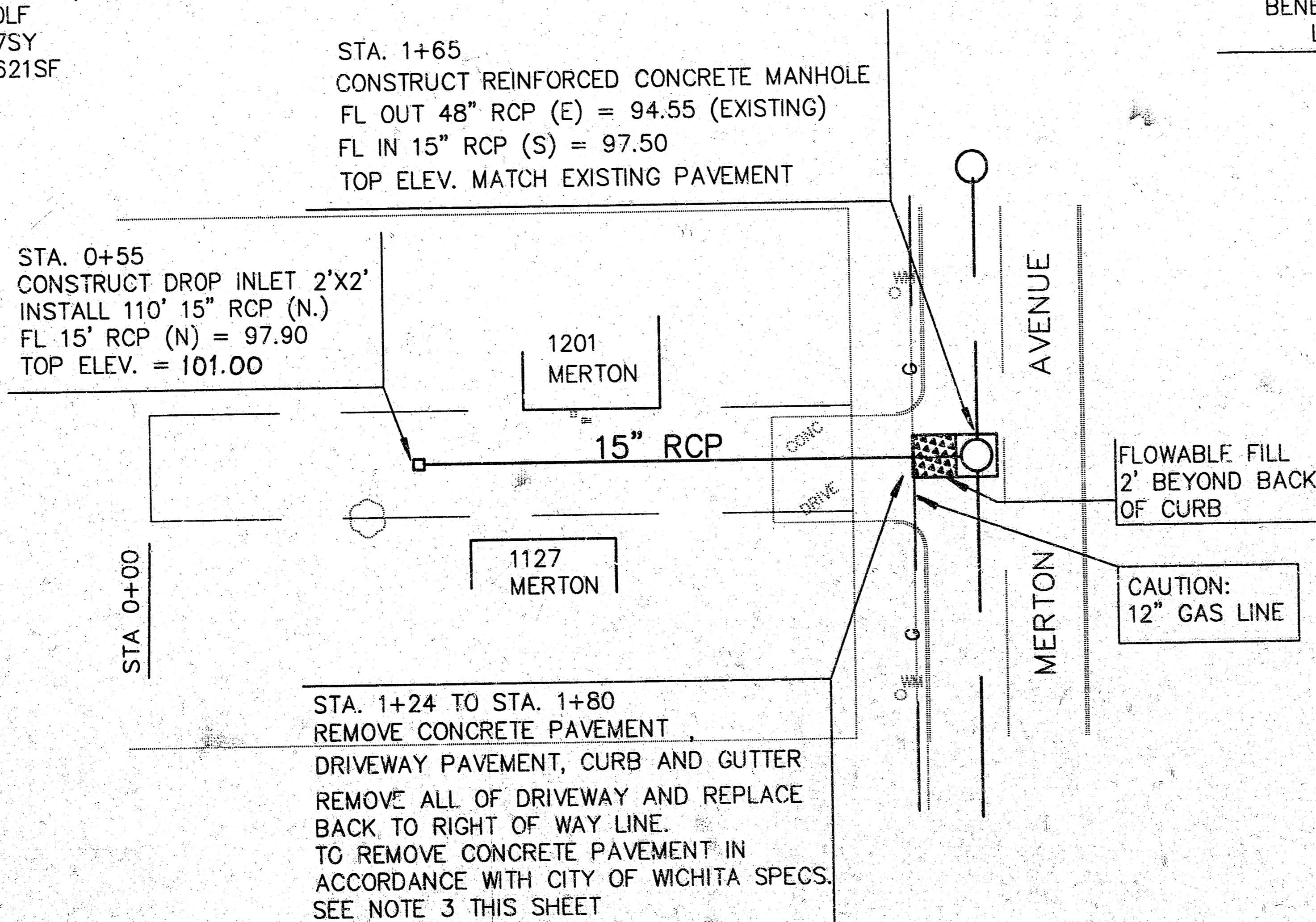
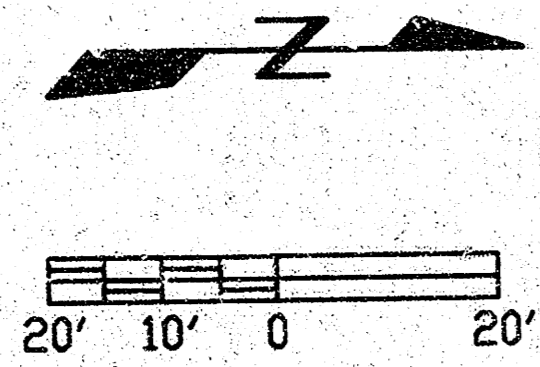
AutoCAD Drawing File Name 9431.DWG  
 Archive Computer Disk # ACAD-DWG21  
 Plot Scale 1/1=99

**NOTES:**

1. FLOWABLE FILL  
STA. 1+54.5 TO STA. 1+80  
(TO 2' BEYOND BACK OF CURB)
2. COMPACTED FILL (95% DENSITY)  
STA. 0+55 TO 1+54.5
3. REMOVAL AND REPLACEMENT ITEMS:  
8" REINF CONC PVMT 77SY  
6" DRIVEWAY CONC PVMT 301SF  
COMB. C&G (6 5/8" X 1 1/2") 30LF  
COMB. C&G RMVD 30LF  
PAVEMENT RMVD 77SY  
CONC. DRIVE RMVD 621SF  
SAWED JOINT 76LF

**BENCH MARK:**

CHISELED "□" TOP OF CURB,  
NORTH SIDE OF MERTON, APPROX.  
345' FROM CENTERLINE OF SENACA.  
ELEV. 102.75



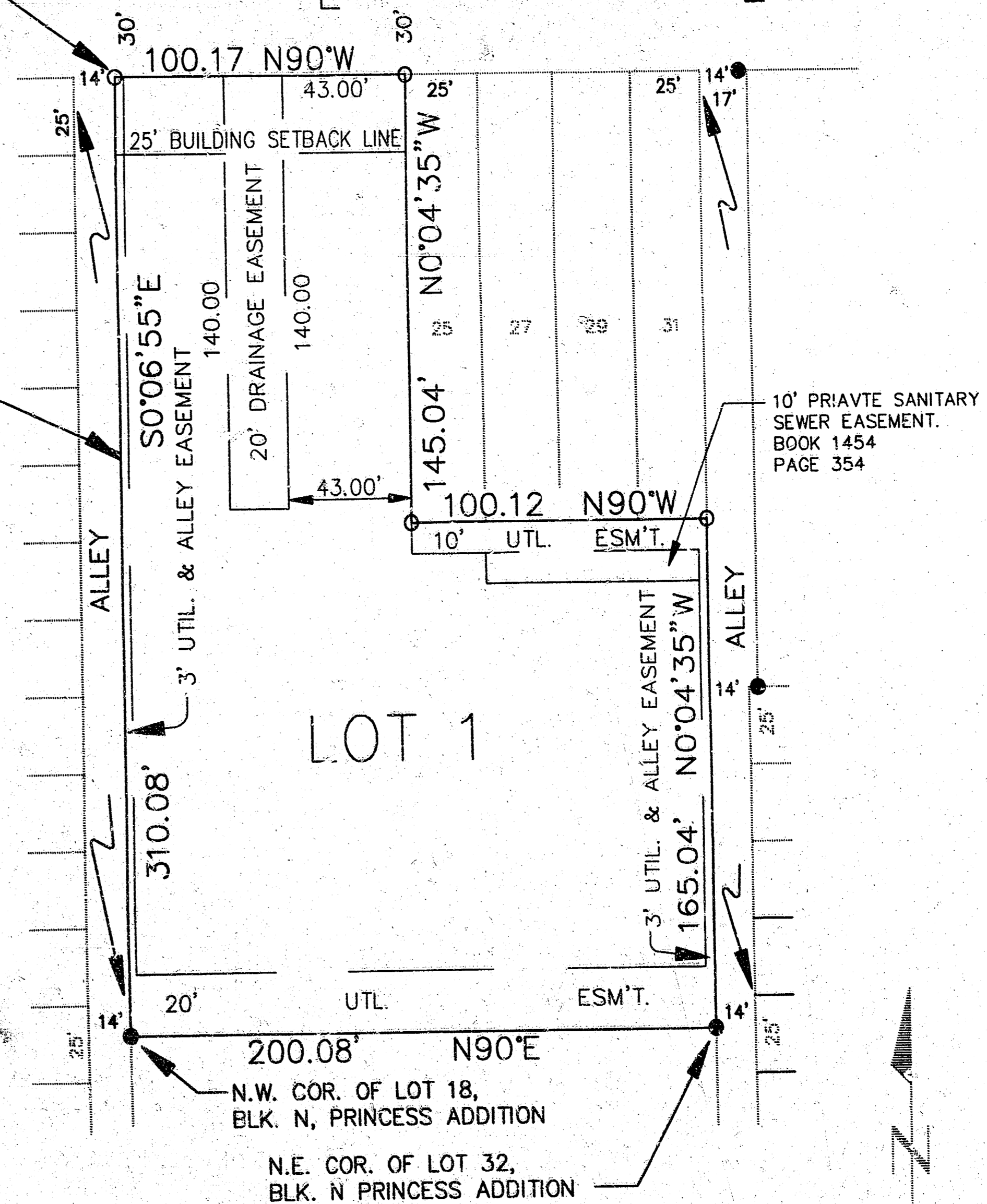
STA. 1+65  
CONSTRUCT REINFORCED CONCRETE MANHOLE  
FL OUT 48" RCP (E) = 94.55 (EXISTING)  
FL IN 15" RCP (S) = 97.50  
TOP ELEV. MATCH EXISTING PAVEMENT

STA. 0+55  
CONSTRUCT DROP INLET 2'X2'  
INSTALL 110' 15" RCP (N.)  
FL 15" RCP (N) = 97.90  
TOP ELEV. = 101.00

STA. 1+24 TO STA. 1+80  
REMOVE CONCRETE PAVEMENT,  
DRIVEWAY PAVEMENT, CURB AND GUTTER  
REMOVE ALL OF DRIVEWAY AND REPLACE  
BACK TO RIGHT OF WAY LINE.  
TO REMOVE CONCRETE PAVEMENT IN  
ACCORDANCE WITH CITY OF WICHITA SPECS.  
SEE NOTE 3 THIS SHEET

N.W. COR. OF LOT 17, BLK. N  
PRINCESS ADDITION

MERTON AVE.

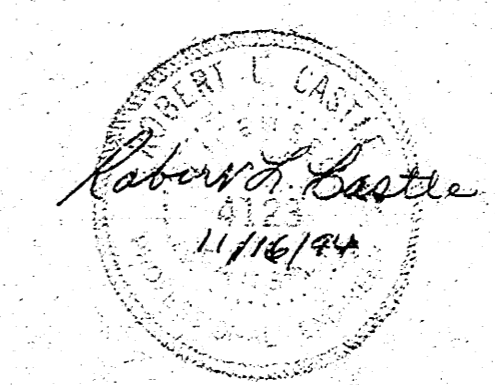
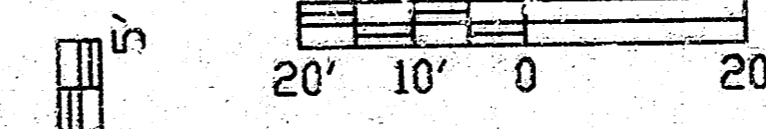
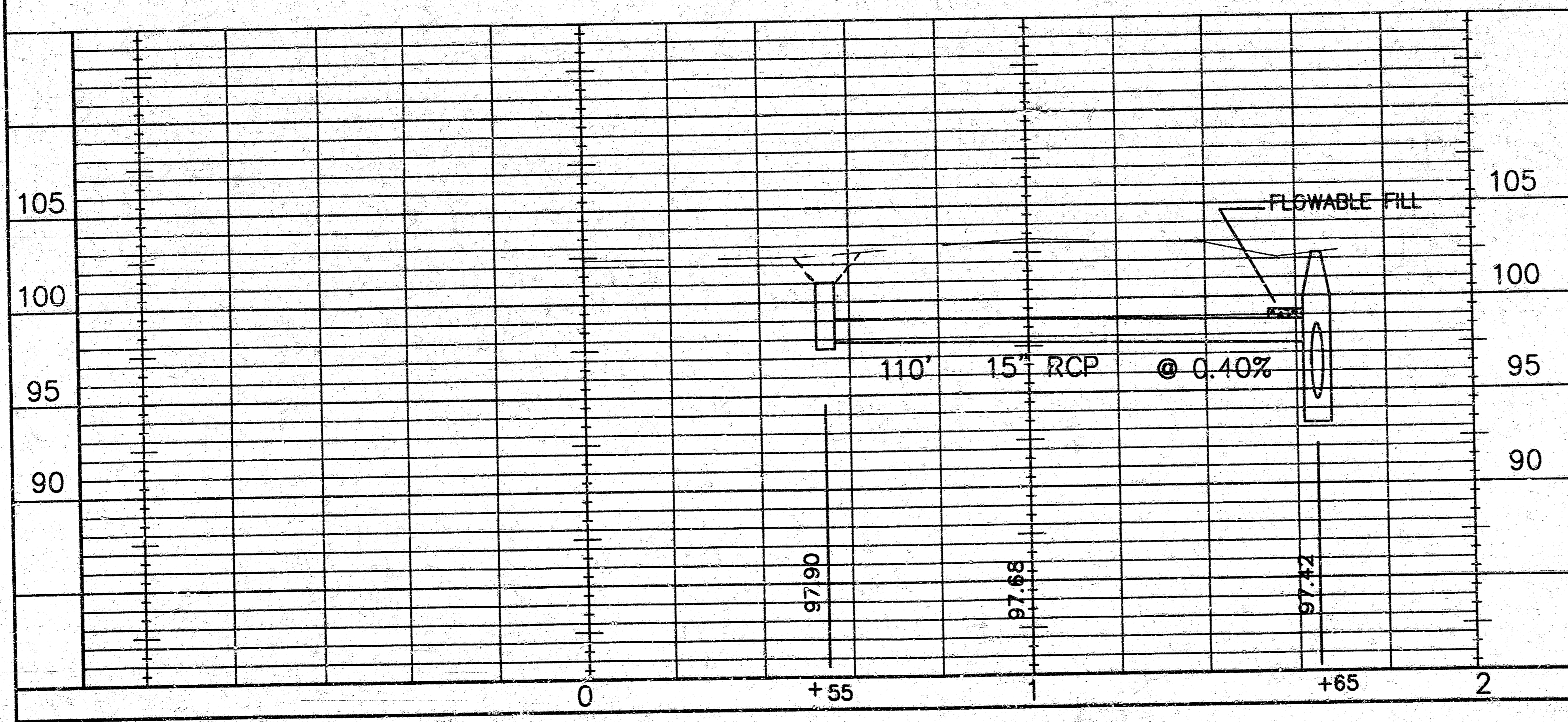
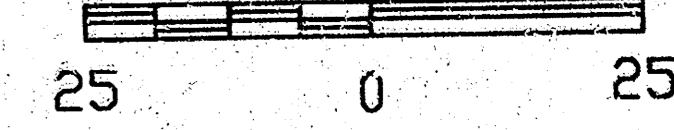


10' PRIVATE SANITARY  
SEWER EASEMENT.  
BOOK 1454  
PAGE 354

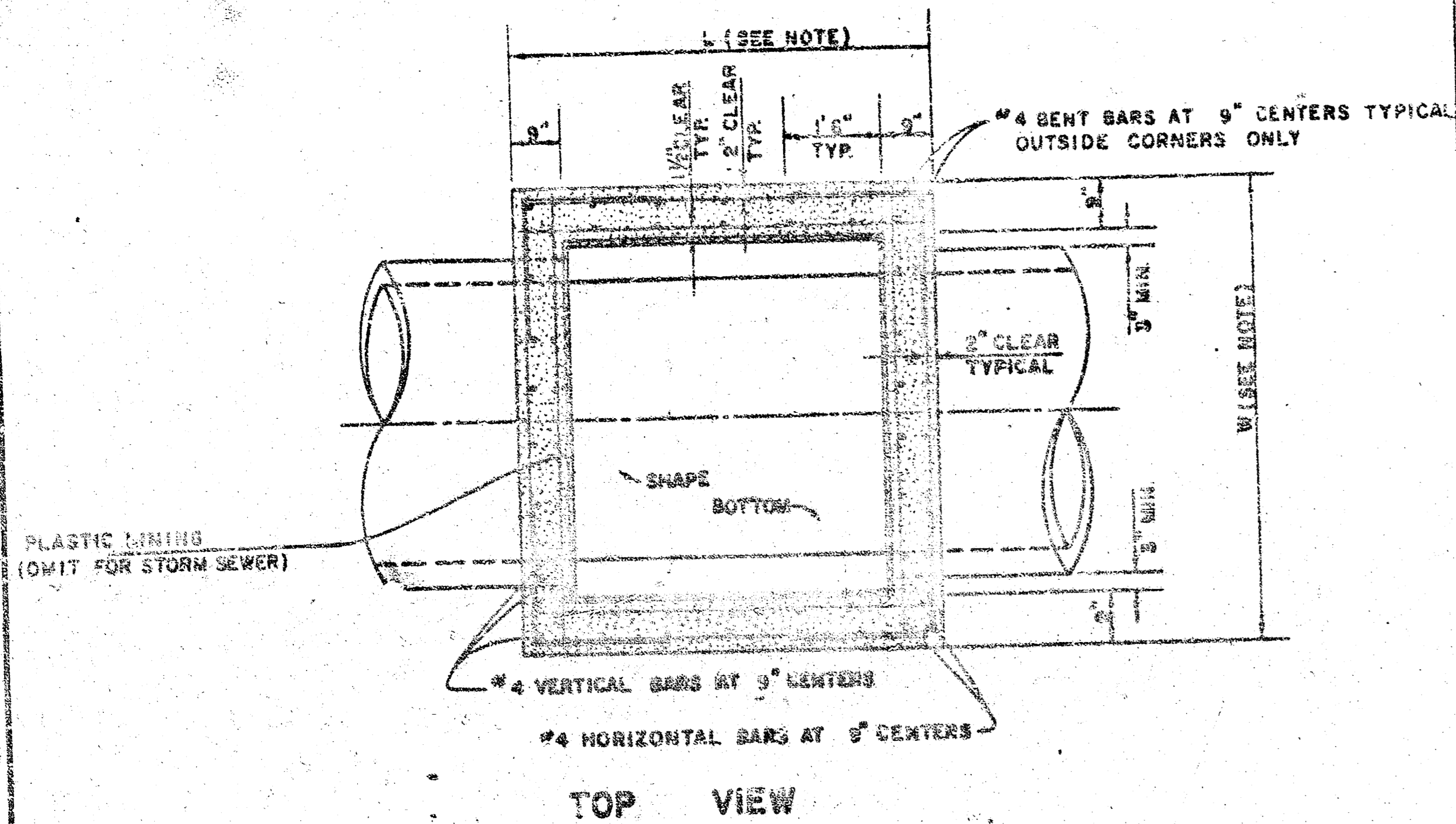
FLOWABLE FILL  
2' BEYOND BACK  
OF CURB

CAUTION:  
12" GAS LINE

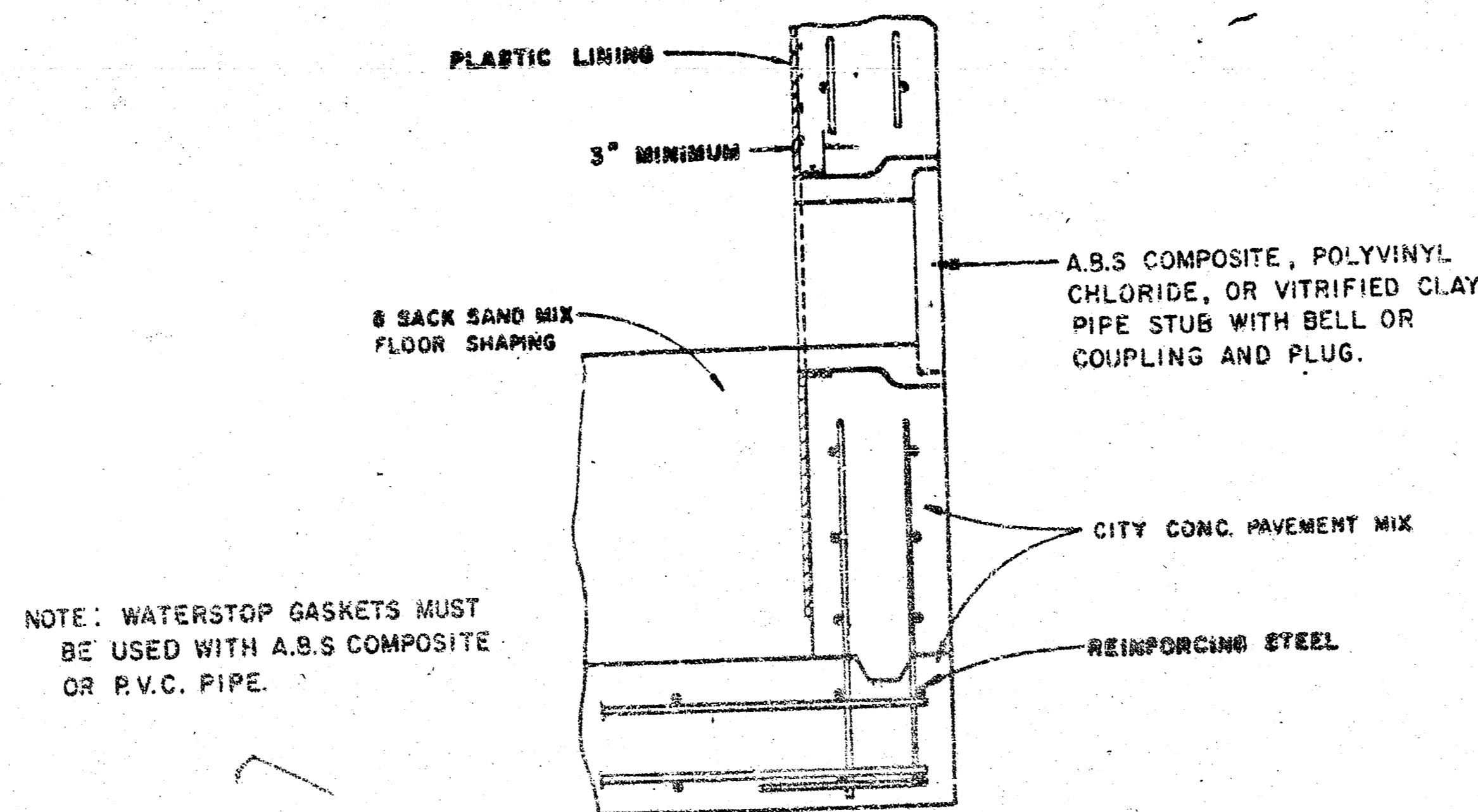
PLAT



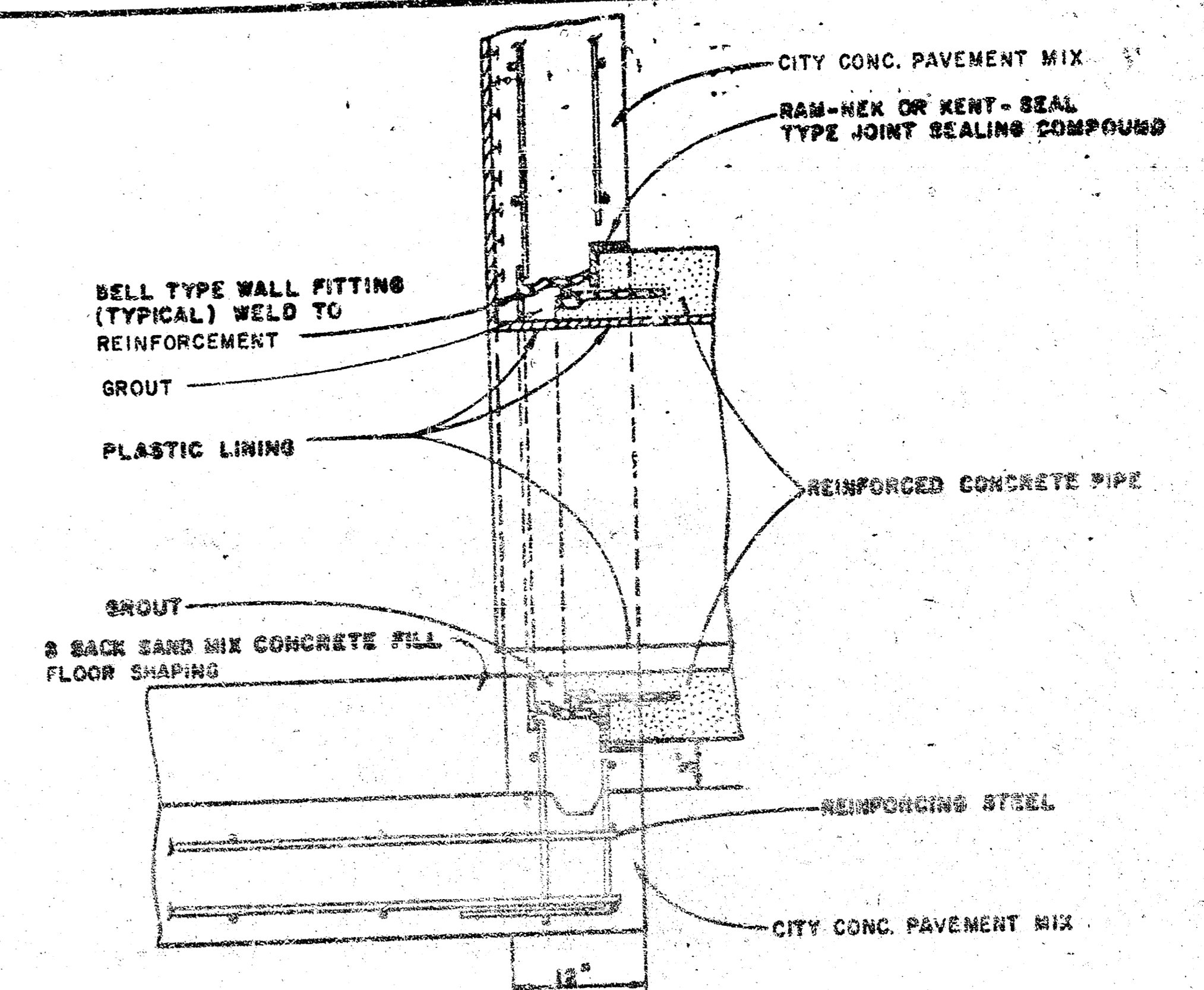
REV. A 11/16/94 LOWER TOP DROP INLET	
CITY OF WICHITA STORM WATER SEWER NO. 454	
PLAN AND PROFILE	
CASTLE & ASSOCIATES ENGINEERS WICHITA, KANSAS	DSG DR DSG CH APP DWG FILE NO 9431 - D - 70,033 SHEET NO 2 OF 4
DATE OCTOBER 1994	REV. A



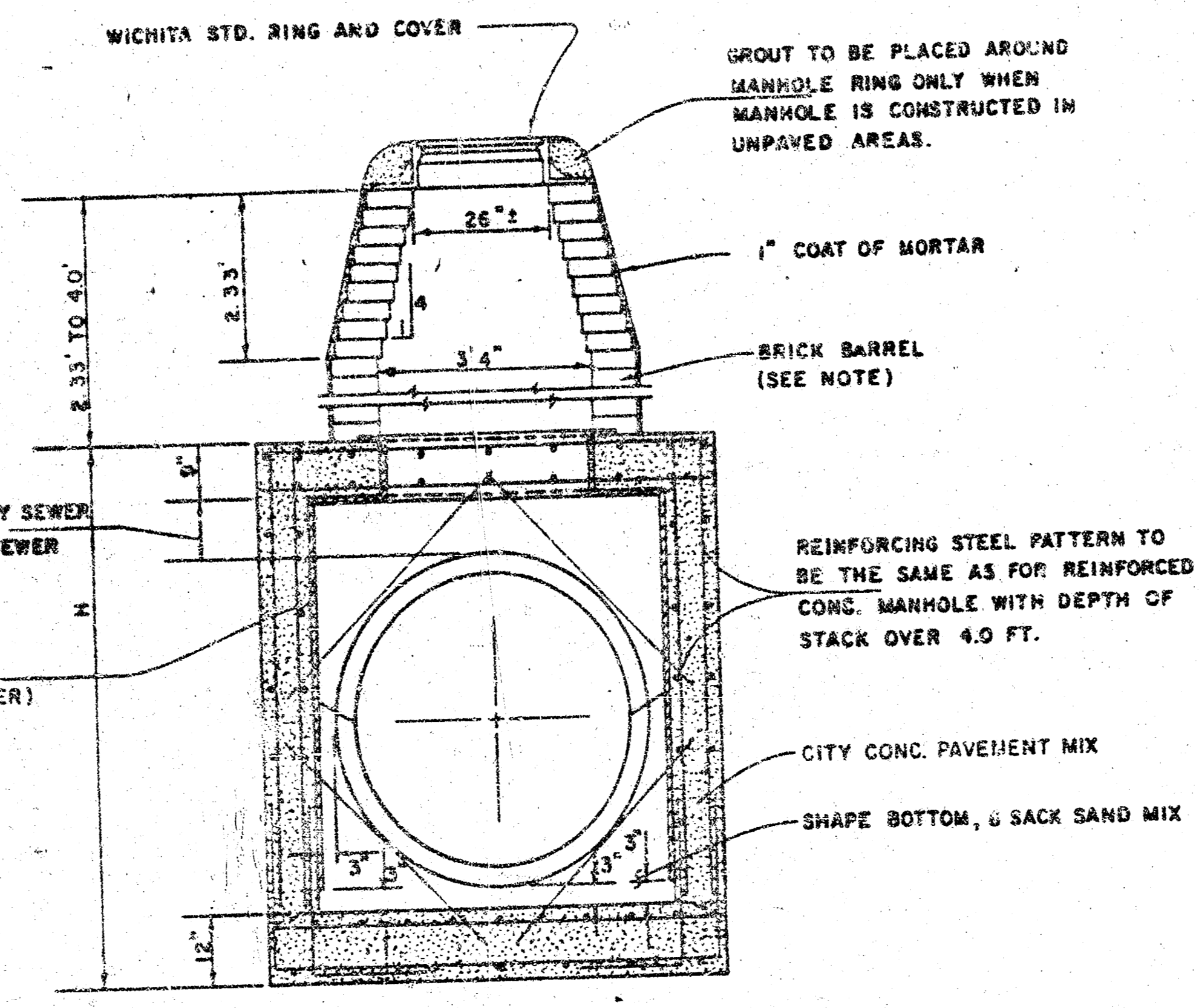
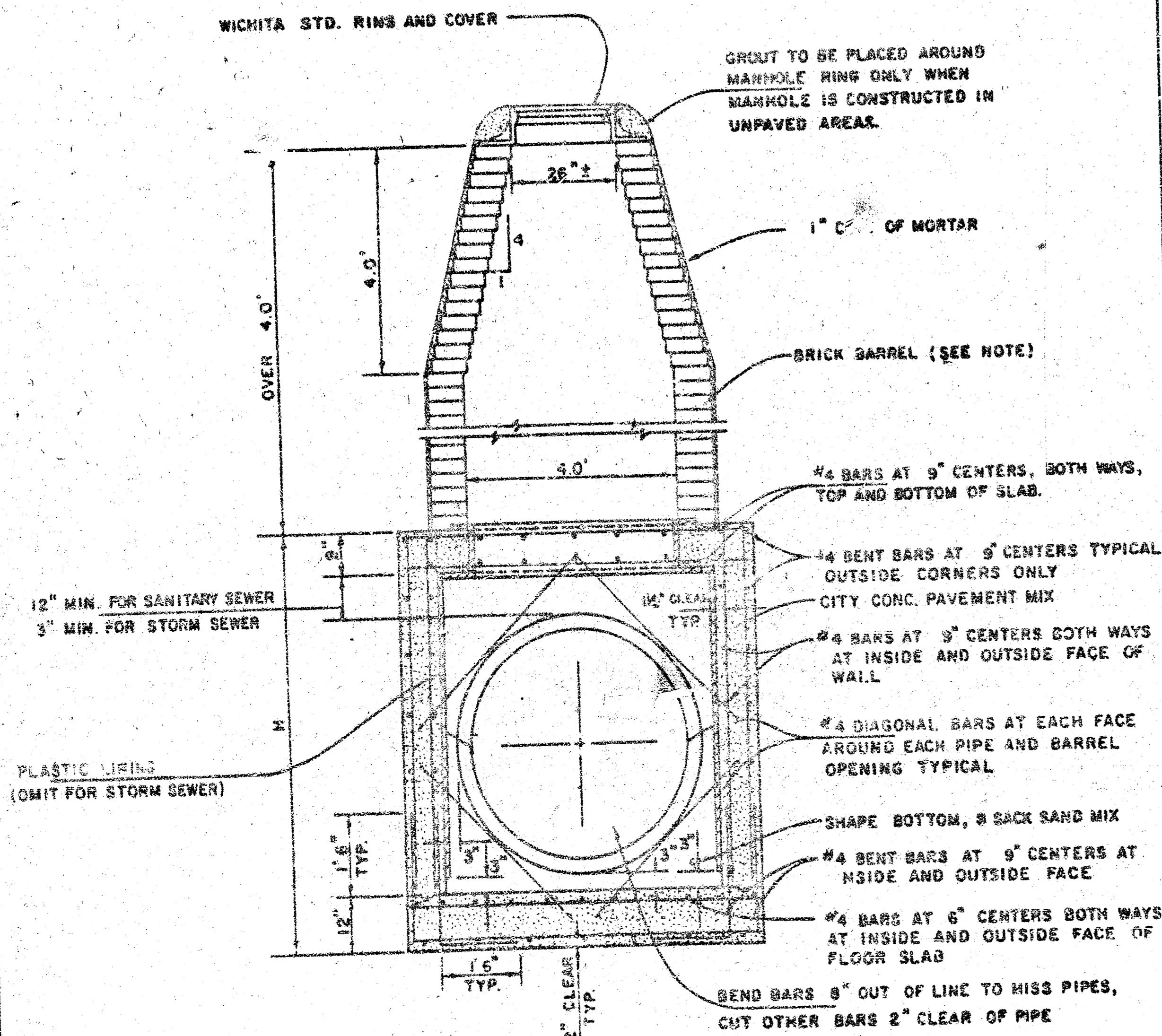
REINFORCED CONCRETE MANHOLE  
DEPTH OF STACK: OVER 4.0'  
SCALE 1" = 2'



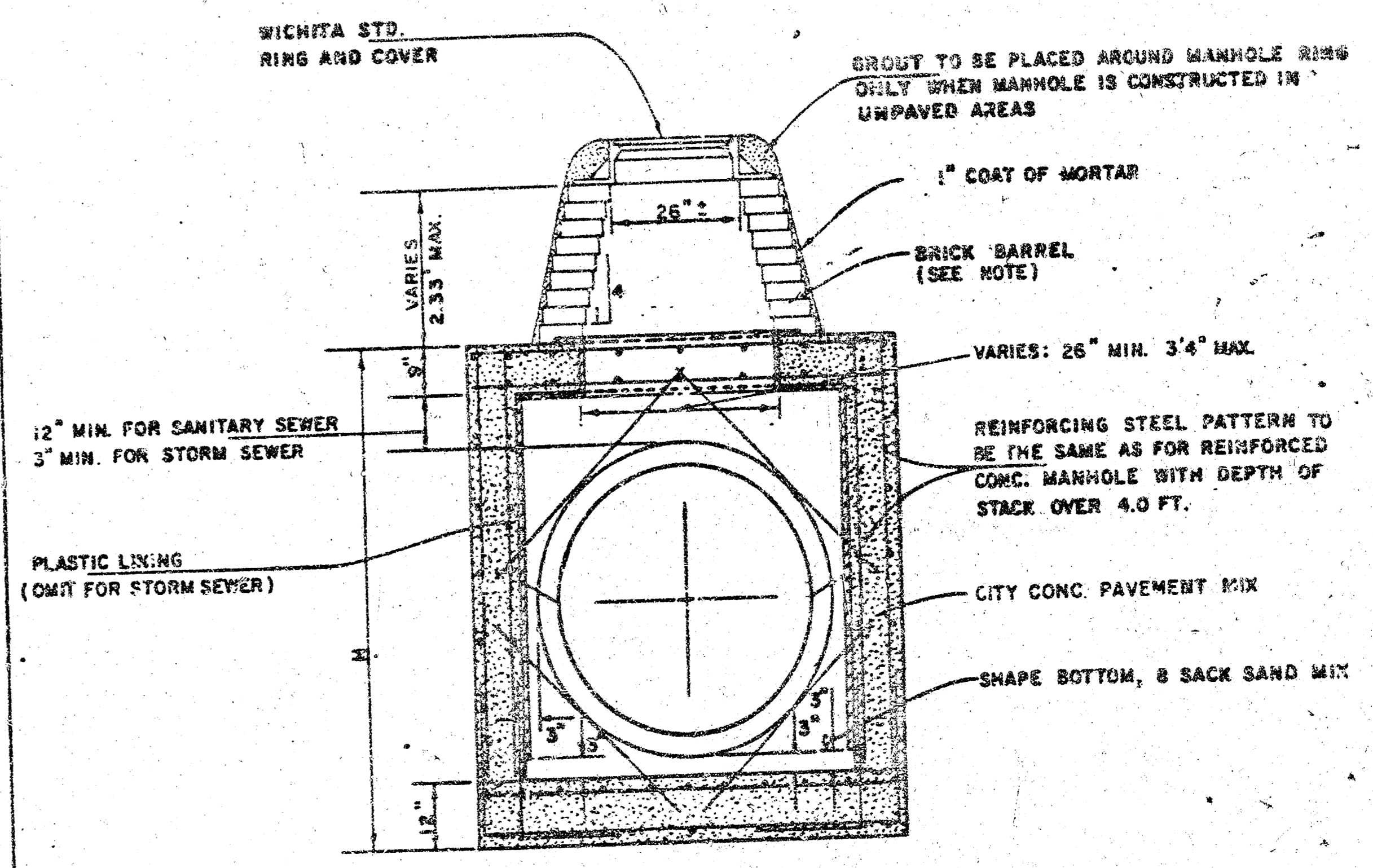
PIPE STUB DETAIL  
SANITARY SEWER ONLY



R.C.P. CONNECTION DETAIL  
SANITARY SEWER ONLY



REINFORCED CONCRETE MANHOLE  
DEPTH OF STACK: 2.33' TO 4.0'  
SCALE 1" = 2'



REINFORCED CONCRETE MANHOLE  
DEPTH OF STACK: 0' TO 2.33'  
SCALE 1" = 2'

NOTE:  
BRICK BARRELS LESS THEN 16' DEEP SHALL HAVE 8" WALLS EXCEPT WHEN LOCATED WITHIN PUBLIC STREET OR ALLEY PAVEMENT THEN THE WALL SHALL BE 12". BRICK BARRELS MORE THEN 16' DEEP SHALL HAVE 12" WALLS. THE "L" AND "W" DIMENSIONS SHALL BE A MINIMUM OF 5'6" FOR BRICK BARRELS WITH 8" WALLS AND 6'2" FOR BRICK BARRELS WITH 12" WALLS WHEN THE BRICK BARRELS ARE OVER 4 FT. IN HEIGHT. COMPLETED MANHOLE SHALL BE WITHOUT LEAKS AND WATERTIGHT.

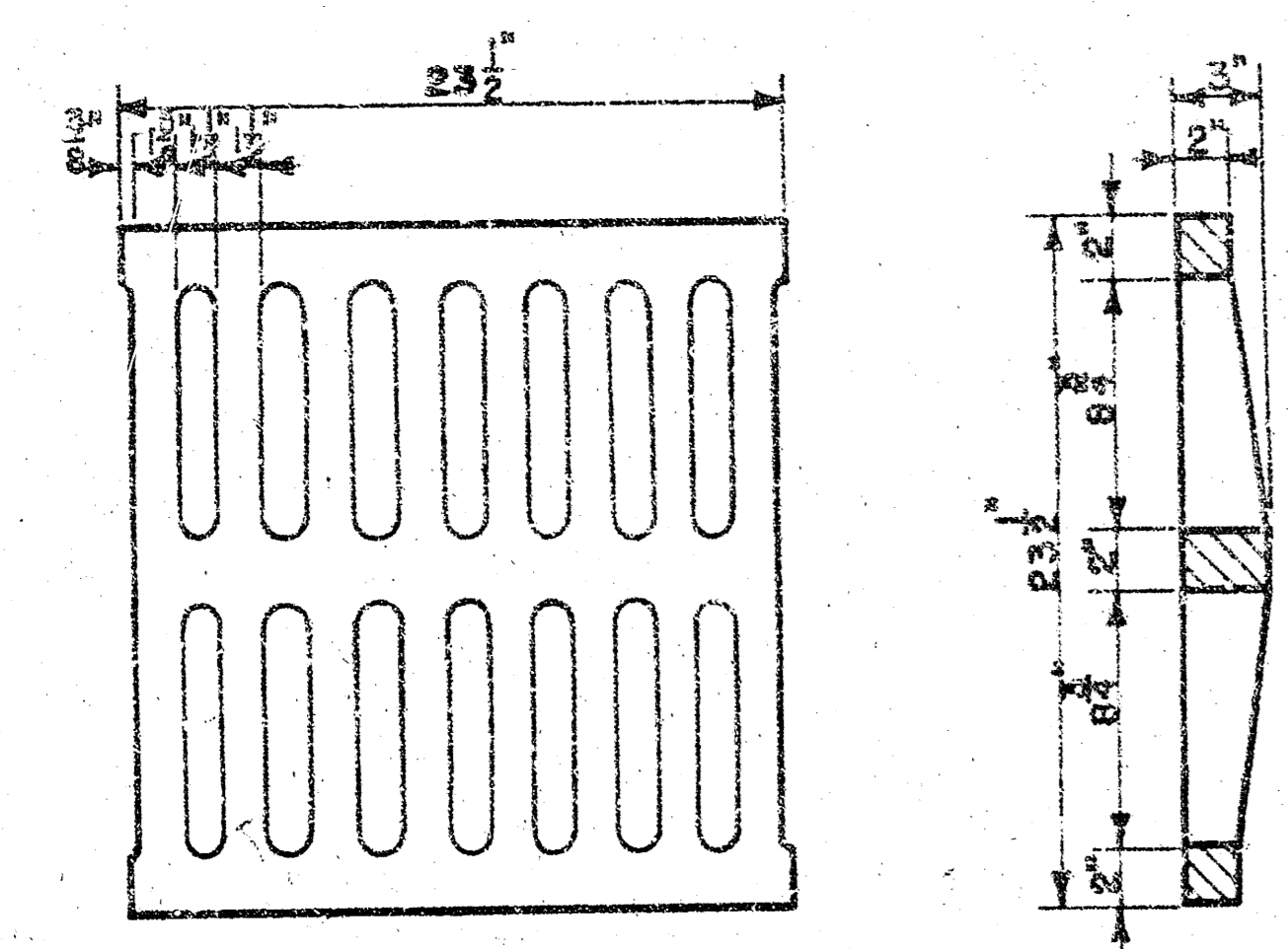
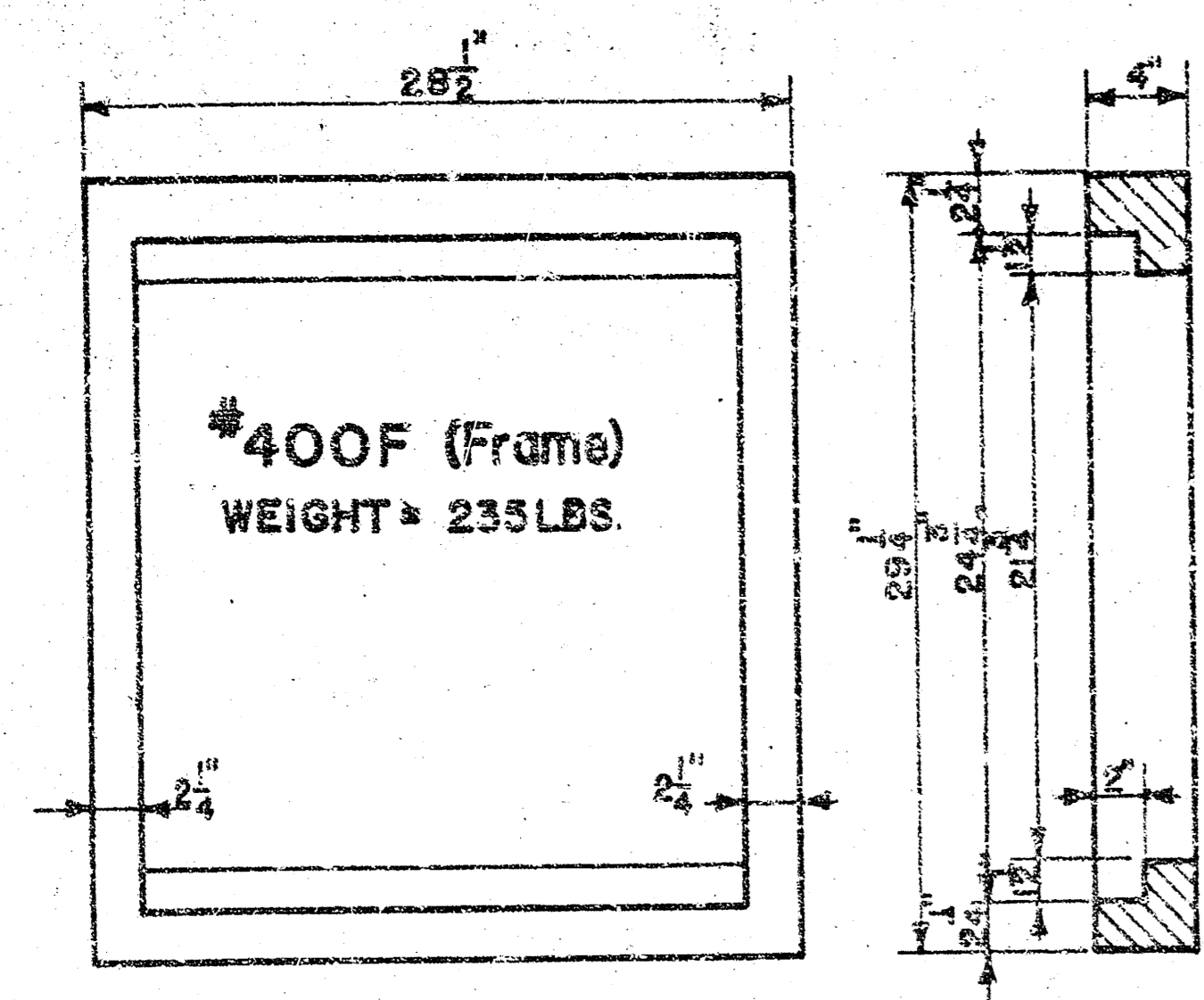
REVISED 1-7-85 C.O.W. PROJECT NO. 468-82410

STANDARD DETAILS  
REINFORCED CONCRETE MANHOLES

CITY OF WICHITA  
PROJECT: STORM WATER SEWER NO. 454  
FEBRUARY 1984

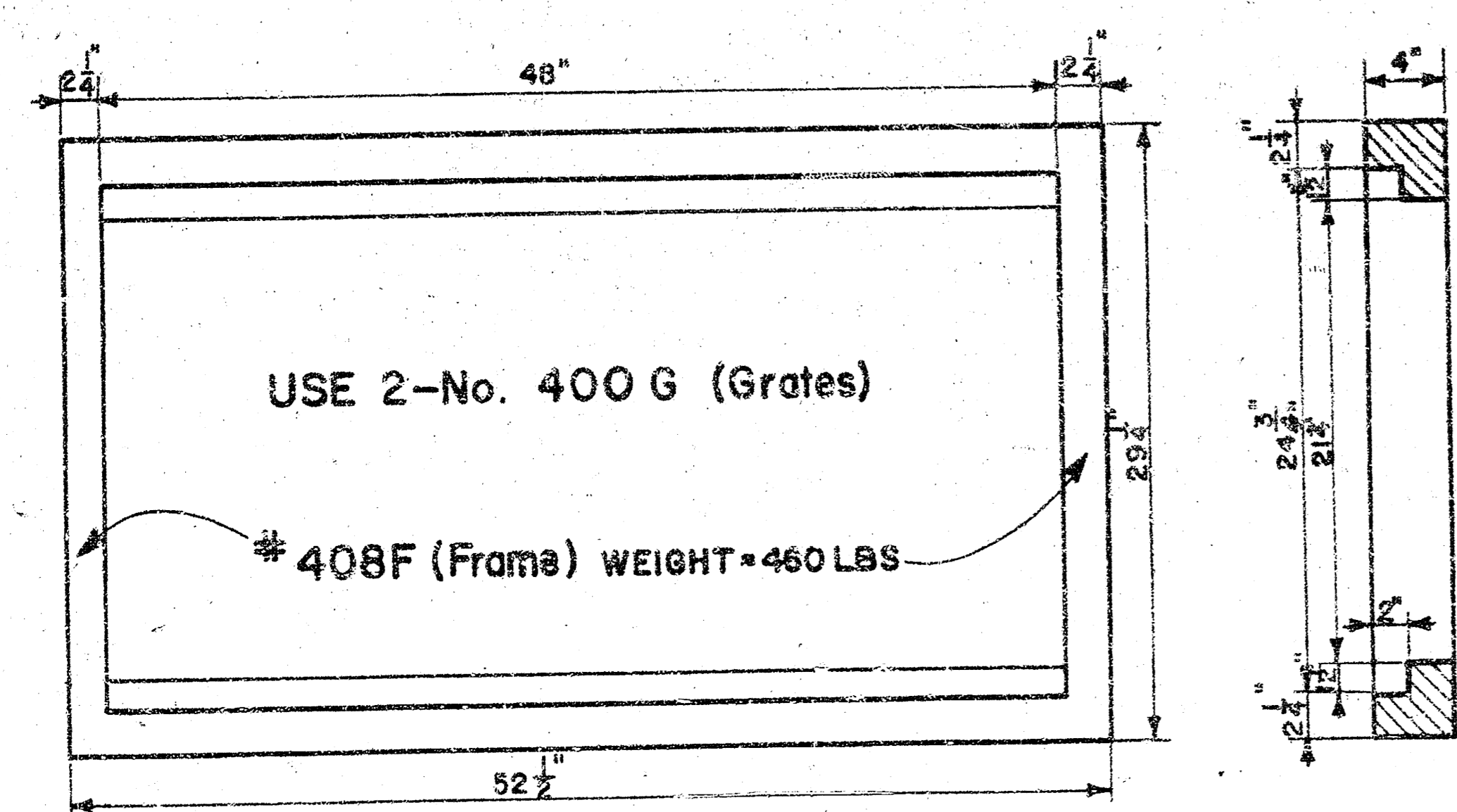
SHEET  
3 OF  
4

NOTE: Grates shall be imprinted on the top surface with "CITY OF WICHITA" using letters at least 1" in height. Other marking methods may be used only if approved by the engineer.

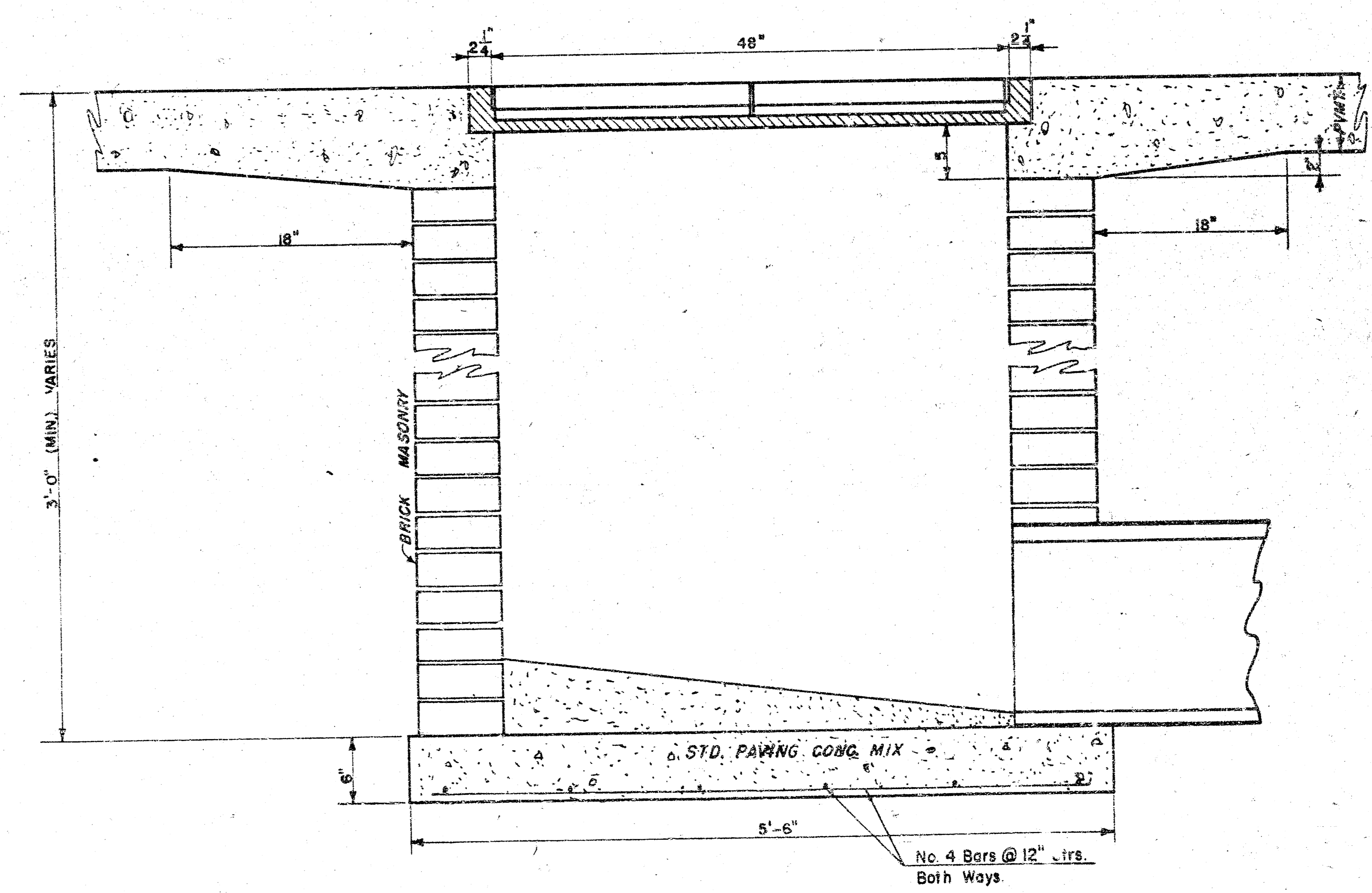
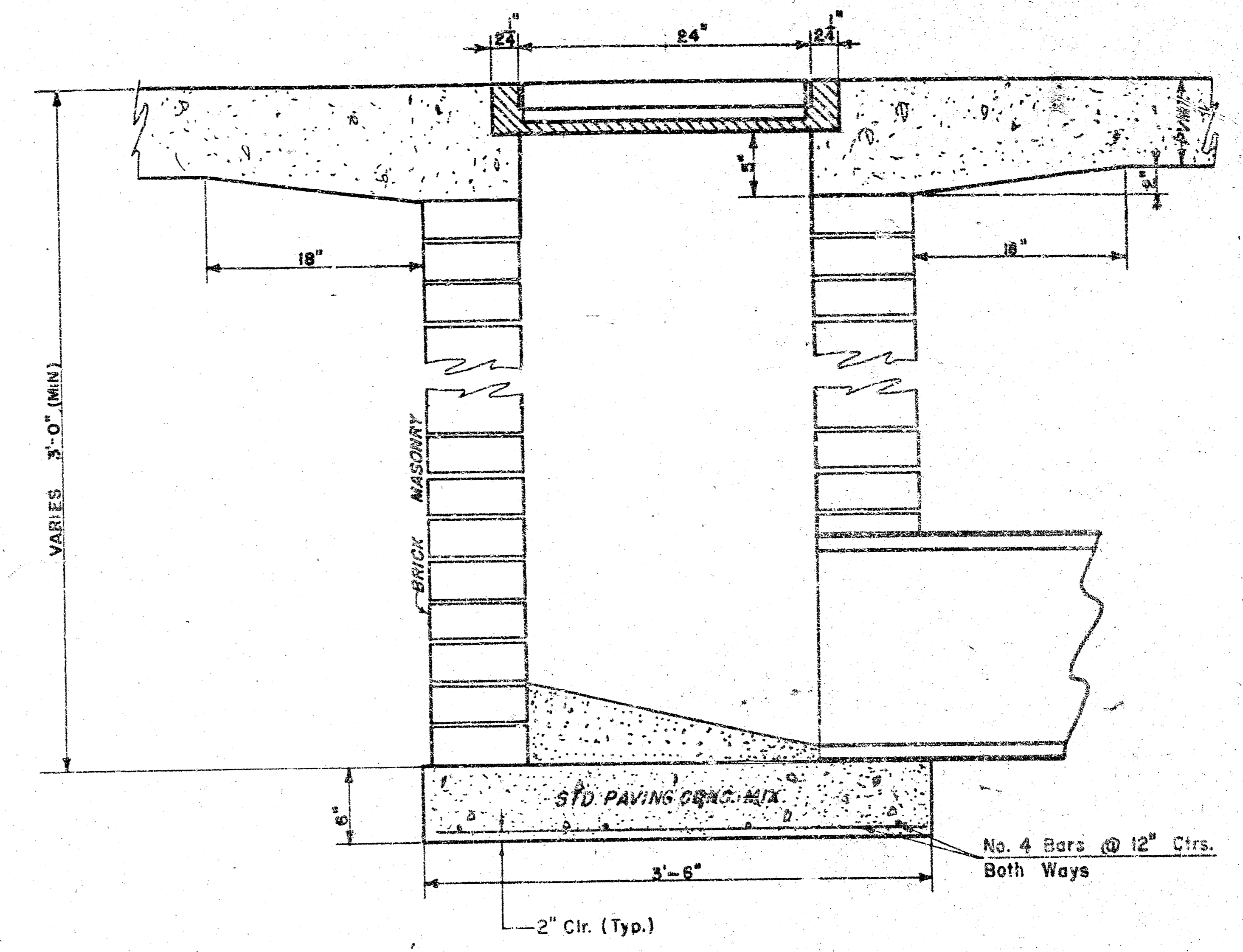
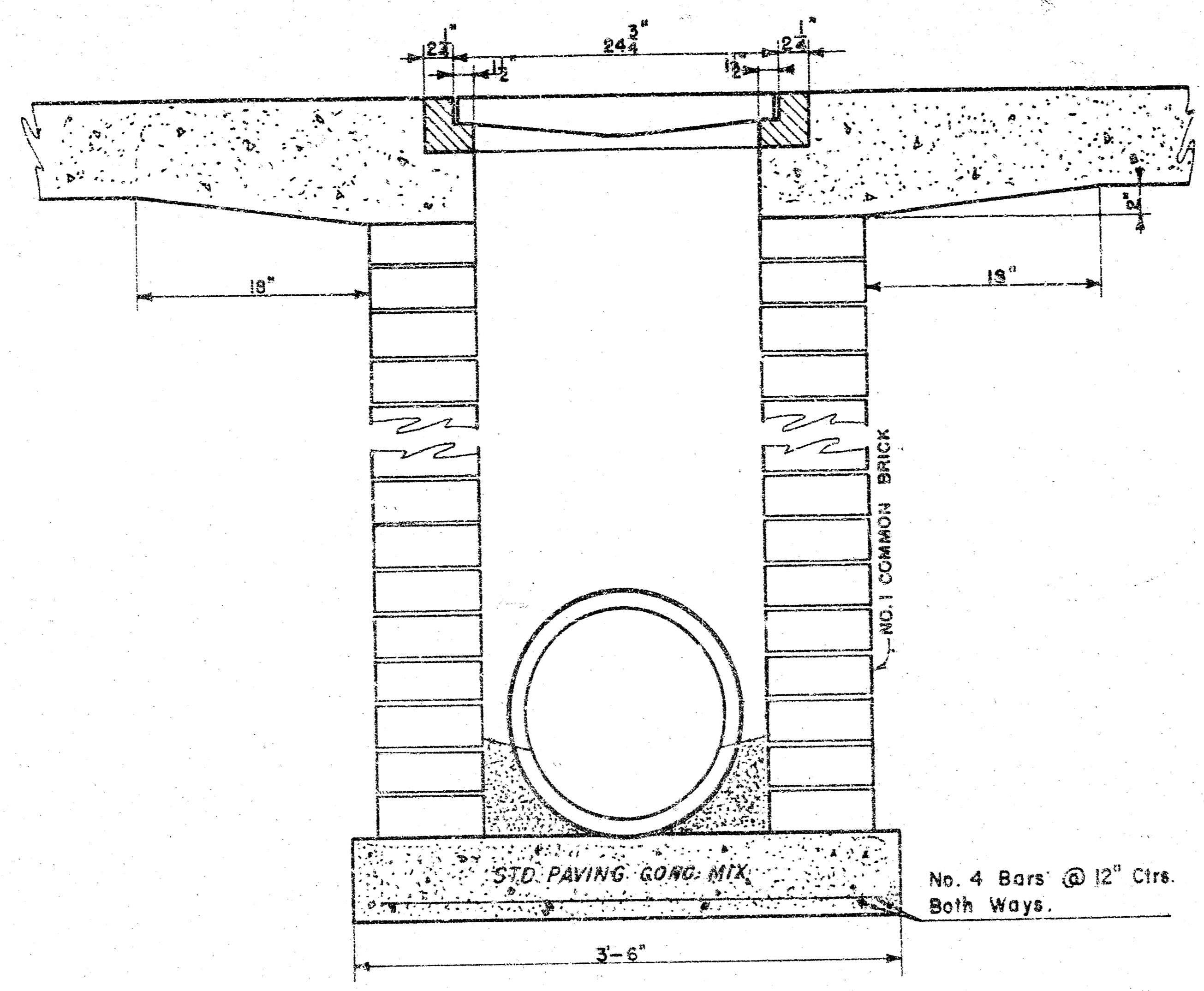


# 400G (Grate)  
WEIGHT = 235 LBS

24" x 24" Frame & Grate Detail



Double 24" x 24" Frame Detail



**DROP INLET DETAILS**

M.E. Lindebak, City Engineer  
 City of Wichita, Kansas  
 Project STORM WATER SEWER NO 454  
 Project No. 468-82410  
 Date: OCTOBER, 1994  
 Scale: 1-1/2" = 1'-0"

SHEET  
 4 OF  
 4

DRWG. FILE NO. 9431-D-70,035