

General Notes

1. Contractor will be required to provide notice to utility companies a minimum of twenty-four (24) hours prior to any excavation, as follows:

Kansas One-Call 687-2470

The Contractor must notify the following in case of an emergency:

Cablevision 262-4270
 or 263-2061
 K.G.E. Gas Service Company 383-8650
 Kansas Gas & Electric Company 383-8600
 Peoples Natural Gas Company 942-7600
 Southwestern Bell Telephone Company 1-571-2611
 City of Wichita Water Department 268-4908
 City of Wichita Sewer Maintenance 268-4071

2. Underground utility service lines and overhead utility pole lines are to be adjusted as necessary by others prior to construction unless the plans specifically call for their adjustment by the Contractor or unless the plans specifically identify a utility to be adjusted by its owner during construction. Existing utilities and their location, as shown on the plans, represent the best information obtainable for design. Utilities may exist which are not shown on the plans. It will be the responsibility of the Contractor to verify the locations of existing utilities. The Contractor will be required to work around existing utilities within the right-of-way which do not conflict with proposed construction.

3. Rubble from the removal of miscellaneous structures and excess excavation which is to be wasted shall be disposed of on sites to be provided by the Contractor. These sites shall be approved by the Engineer as to suitability, appearance and site location. Locations that, in the opinion of the Engineer, will leave an unsightly appearance will not be approved. All disposal sites must be approved by the Kansas Department of Health and Environment. Material either stockpiled or disposed of in a flood plain would require a Kansas State Board of Agriculture permit. Any material dumped in waters of the United States or wetlands is subject to U.S. Corps. of Engineers permitting regulations. Any material buried or stockpiled beyond approved construction limits would require additional archaeological investigations unless buried in a previously approved borrow location.

4. Properties within the project limits may have underground sprinkler systems in public right-of-way which conflict with new construction. Contractor will be required to remove such improvements should they not be removed by their owner at the time of construction of the project. The Contractor will be required to salvage all sprinkler heads and/or valves and give such material to its owner. Portions of underground sprinkler systems not in conflict with new construction shall be protected from damage and shall remain in place. All work in connection with underground sprinkler systems shall be considered a subsidiary to the contract pay items of work.

5. Trees and shrubs in public right-of-way which are in direct conflict with proposed new construction shall be removed by the Contractor with the Engineer's approval. Trees and shrubs which are not in direct conflict with proposed new construction shall be saved and protected from damage.

6. The Contractor shall give all property owners and/or tenants of developed property abutting the construction of this project a minimum of ten (10) days advance notice prior to start of construction.

7. The Contractor shall be responsible for preserving property irons. The Contractor will be required to re-establish any property irons which are damaged or destroyed by his construction operations. Such irons shall be re-established by a licensed land surveyor in accordance with state laws.

8. All areas disturbed by construction operations shall be seeded with rye grass at a rate of 2 lbs. per 1000 sq. feet. Contractor to prepare ground to city specifications prior to seeding.

Storm Sewer #469
 TO SERVE
WESTWIND 5TH ADDITION

Project Number
468-76-245-82540-000-000-001

Index Code: **750729**

CITY OF WICHITA, KANSAS

Michael E. Lindebak, City Engineer

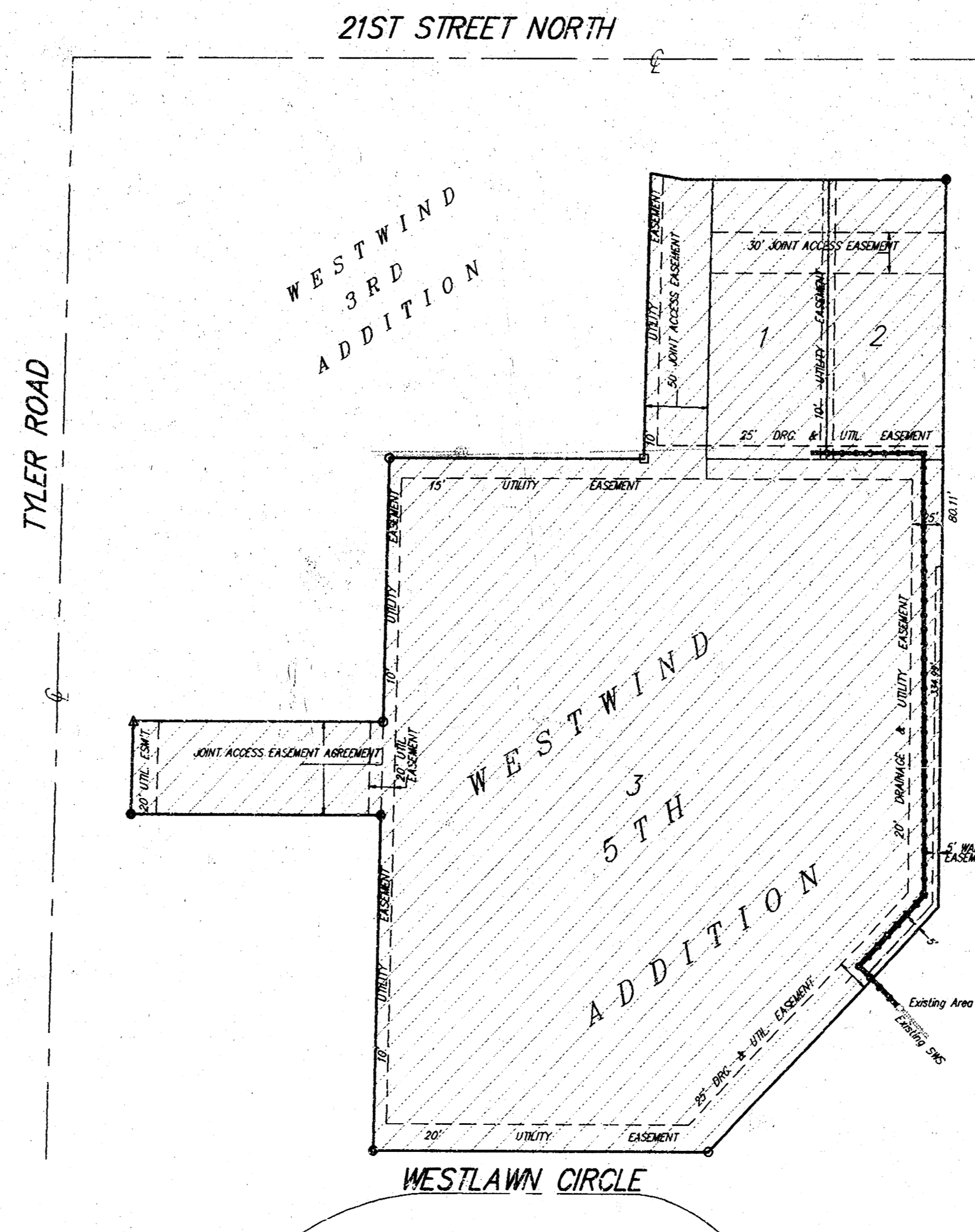
INDEX:

1. Title Sheet
2. Storm Sewer Plan / Profile
3. Storm Sewer Plan / Profile
4. Standard Shallow Manhole Detail
5. Manhole Frame & Cover Detail
6. Standard Drop Inlet Detail
7. Copy of Westwind 5th Addition Plat

BENCHMARKS:

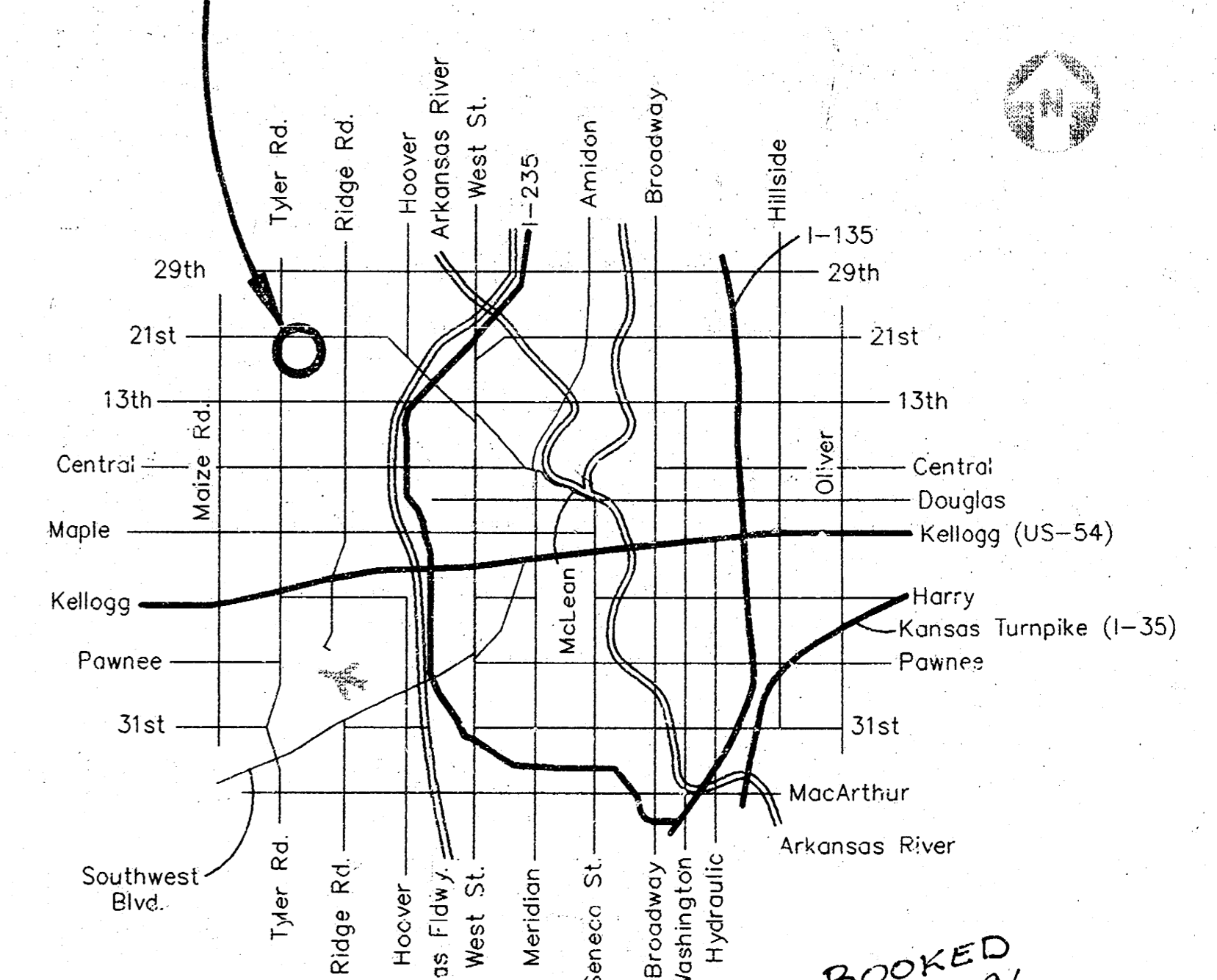
City of Wichita Disc Located 73.6' North and 53.3' East of Centerline Intersection of Tyler Road and 21st Street North.
 Elevation = 170.95 City Datum.

"I" I.C. on Westlawn Circle at the N.W. Corner of Lot 39, Cedar Meadows Addition.
 Elevation = 168.17 City Datum.



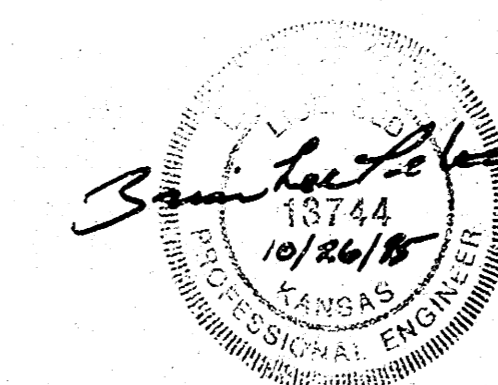
Scale: 1" = 100'

SITE LOCATION



Vicinity Map
 (No Scale)

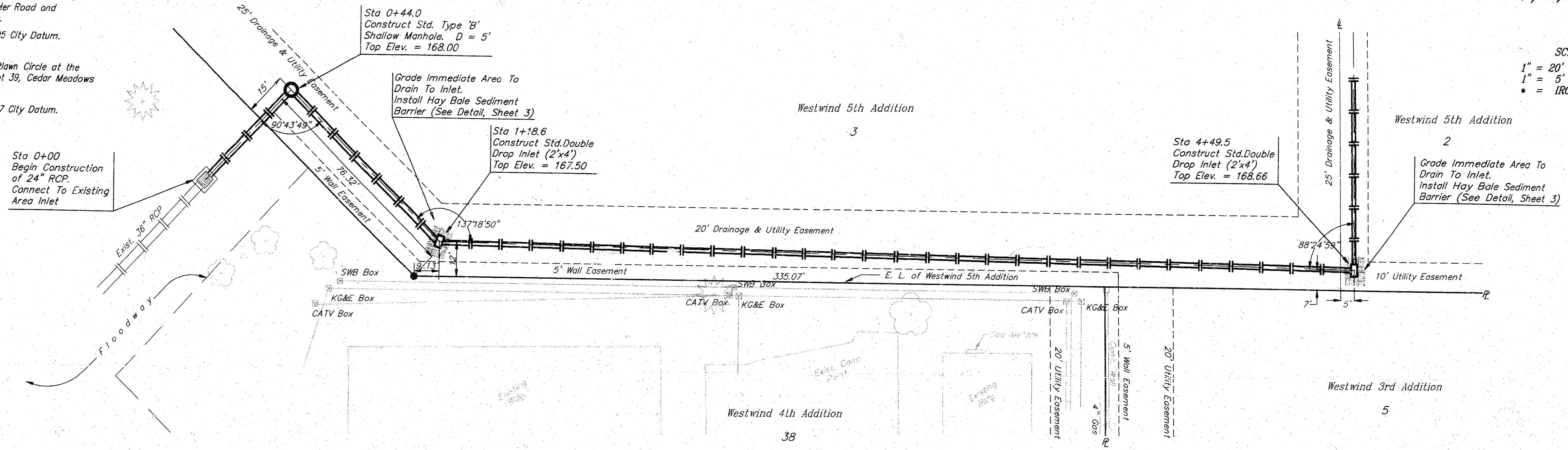
BOOKED
 3-6-96
 MEG
 D-280



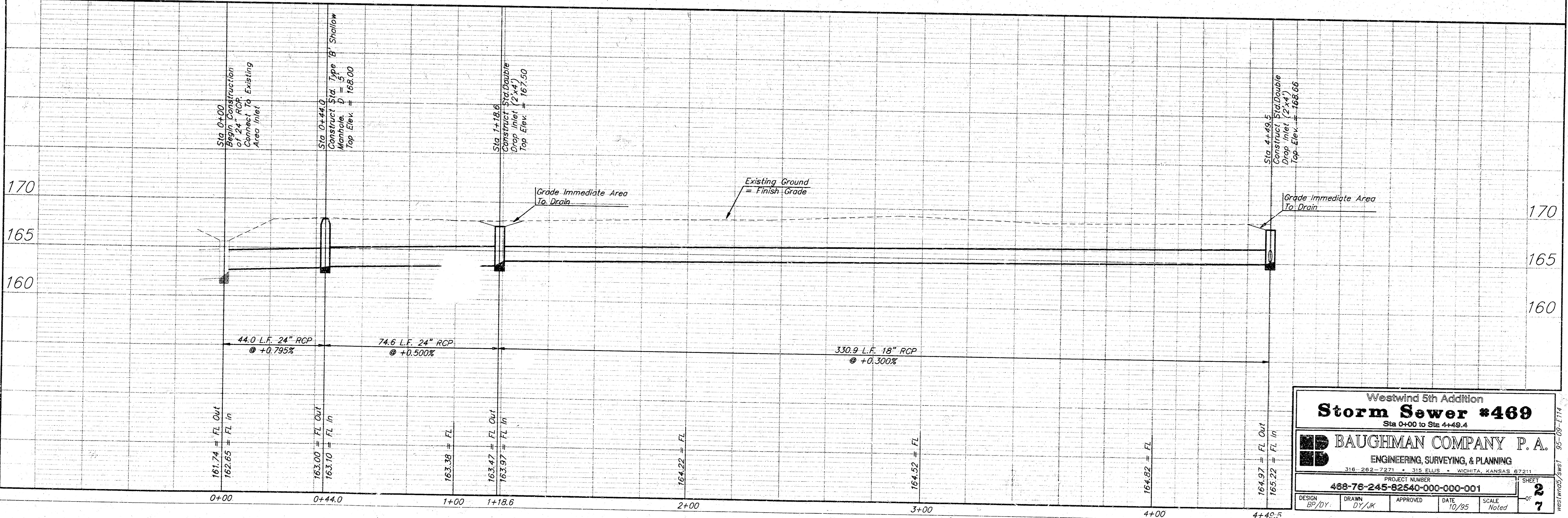
BENCHMARK:

City of Wichita Disc Located 73.6' North and 53.3' East of Centerline Intersection of Tyler Road and 21st Street North.
Elevation = 170.95 City Datum.

"□" I.C. on Westlawn Circle at the N.W. Corner of Lot 39, Cedar Meadows Addition.
Elevation = 168.17 City Datum.



SCALE:
 1" = 20' HORIZONTAL
 1" = 5' VERTICAL
 • = IRON



Westwind 5th Addition
Storm Sewer #469
 Sta 0+00 to Sta 4+49.4

BAUGHMAN COMPANY P. A.
 ENGINEERING, SURVEYING, & PLANNING
 316-262-7271 • 315 ELLIS • WICHITA, KANSAS 67211

PROJECT NUMBER: 489-76-245-82540-000-001

DESIGN: B/DY	DRAWN: D/Y/LK	APPROVED:	DATE: 10/95	SCALE: Noted
--------------	---------------	-----------	-------------	--------------

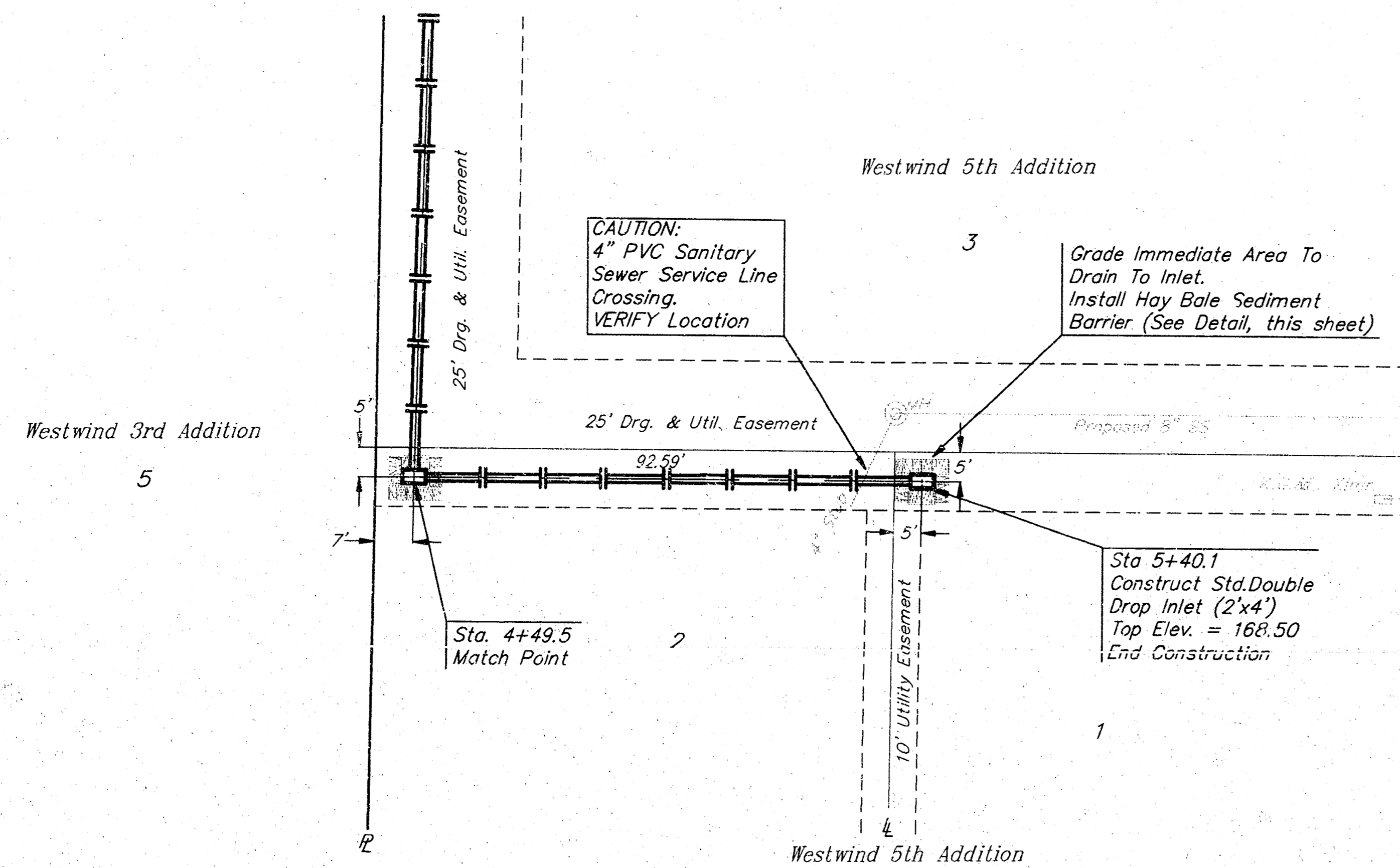
SHEET 2 OF 7

BENCHMARK:

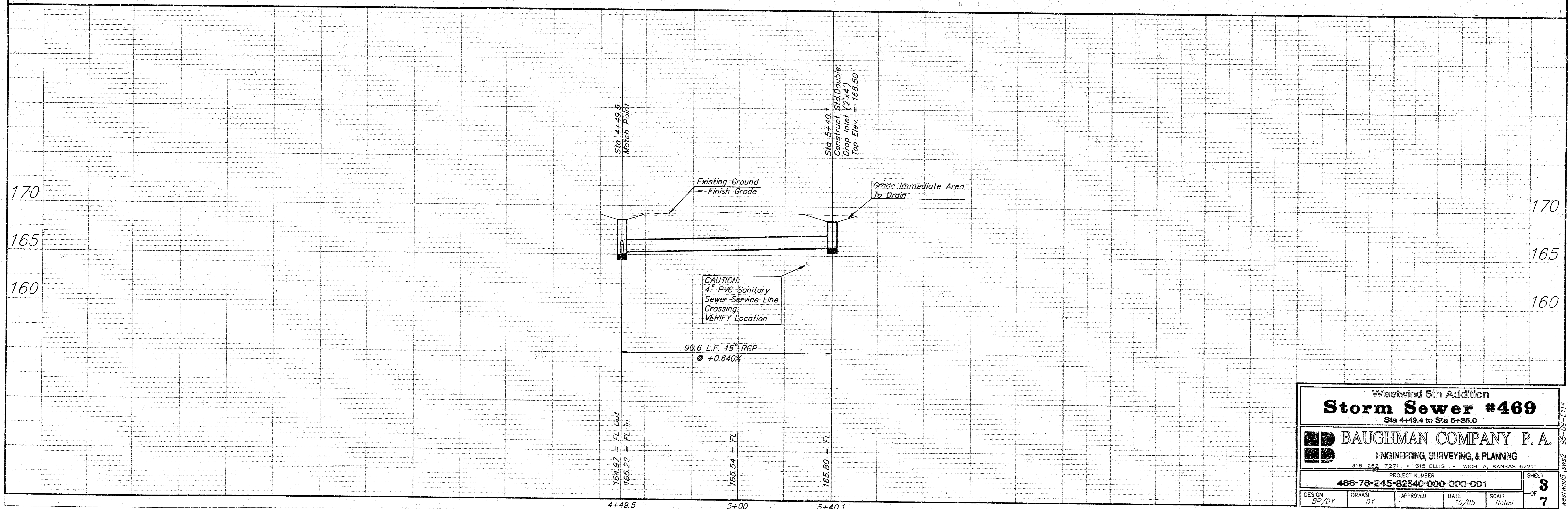
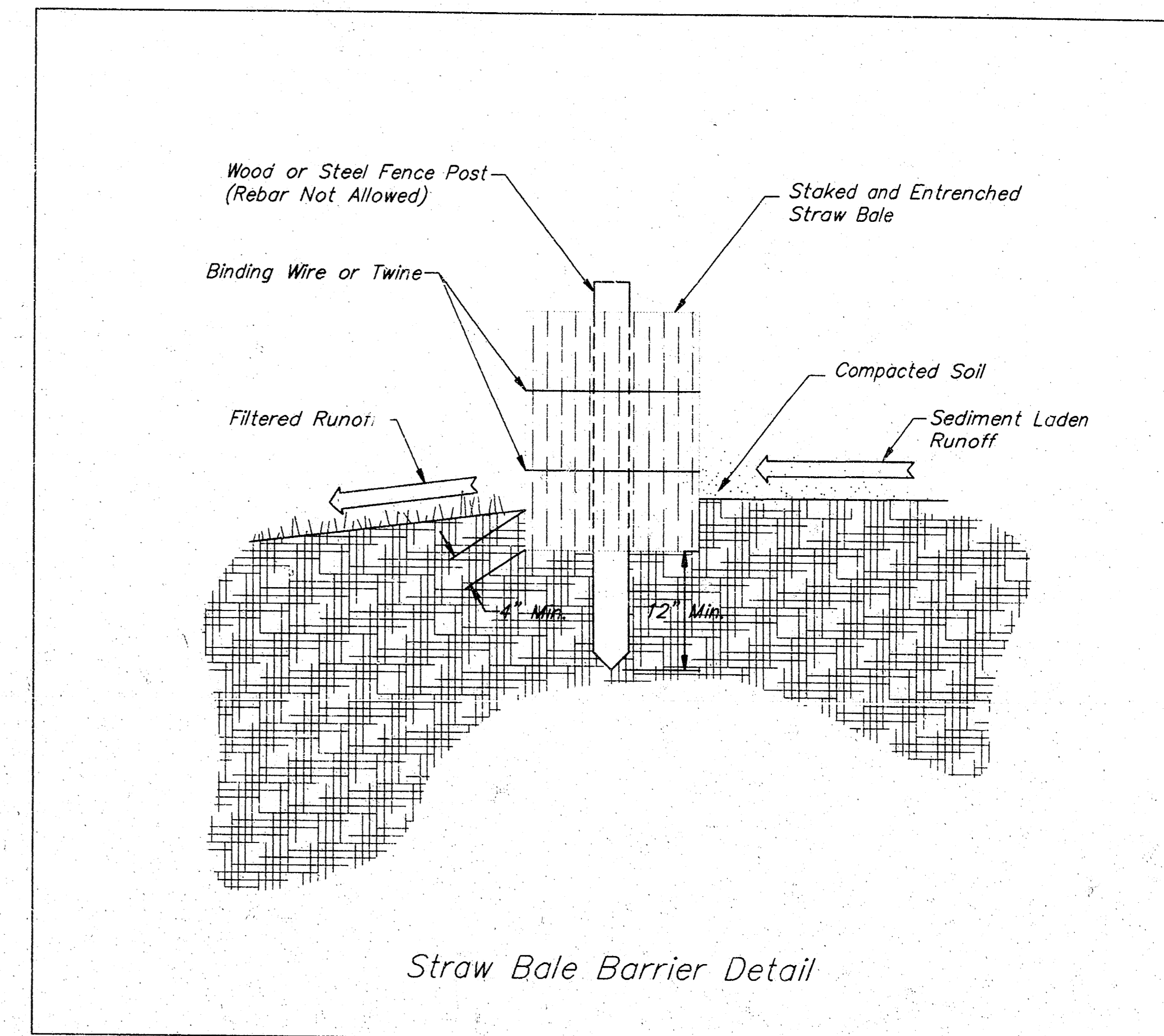
City of Wichita Disc Located 73.6' North and 53.3' East of Centerline Intersection of Tyler Road and 21st Street North.
Elevation = 170.95 City Datum.

"□" I.C. on Westlawn Circle at the N.W. Corner of Lot 39, Cedar Meadows Addition.
Elevation = 168.17 City Datum.

Elevation = 168.17 City Datum.



SCALE:
1" = 20' HORIZONTAL
1" = 5' VERTICAL
• = IRON

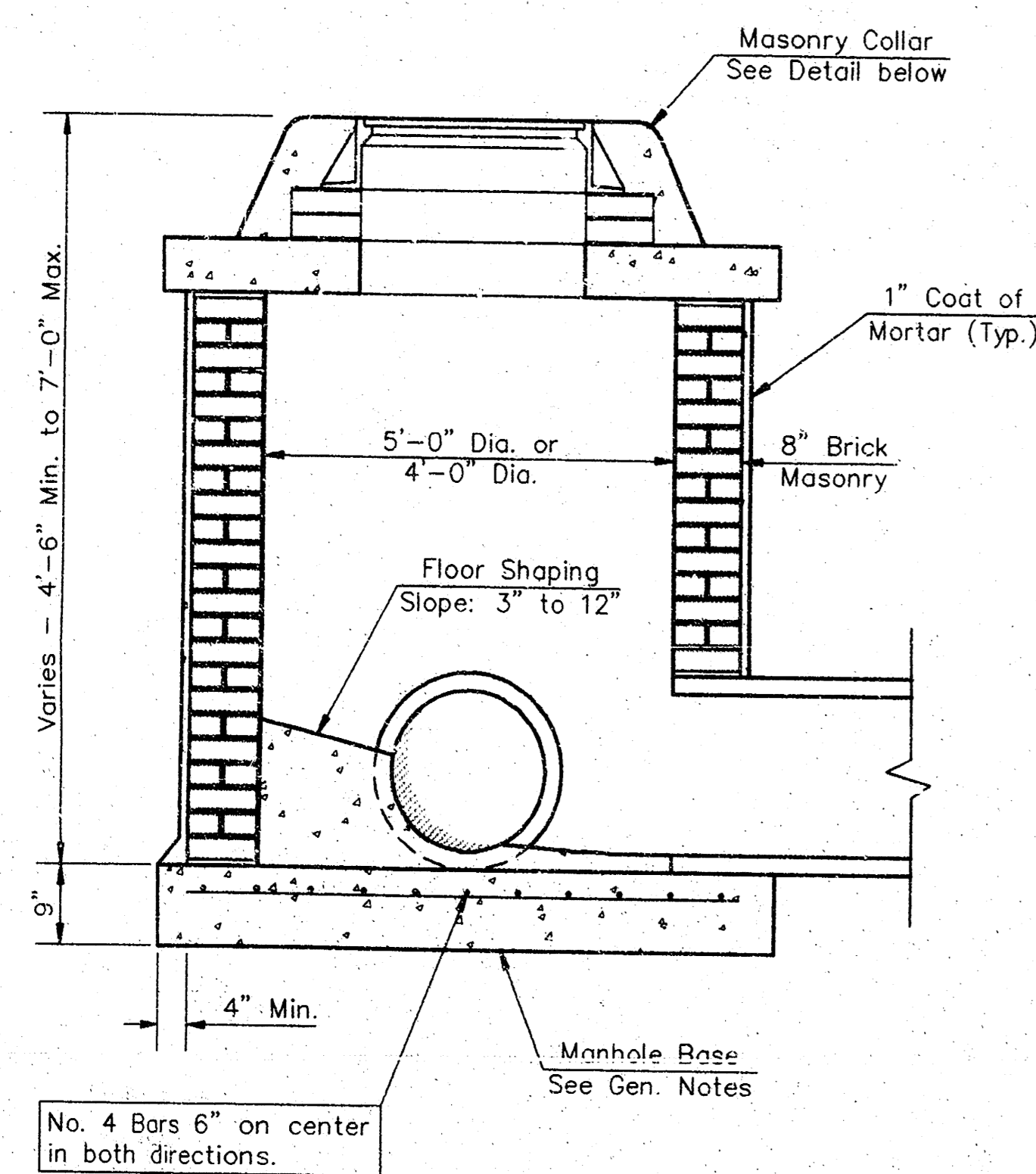


Westwind 5th Addition
Storm Sewer #469
Sta 4+49.4 to Sta 5+35.0

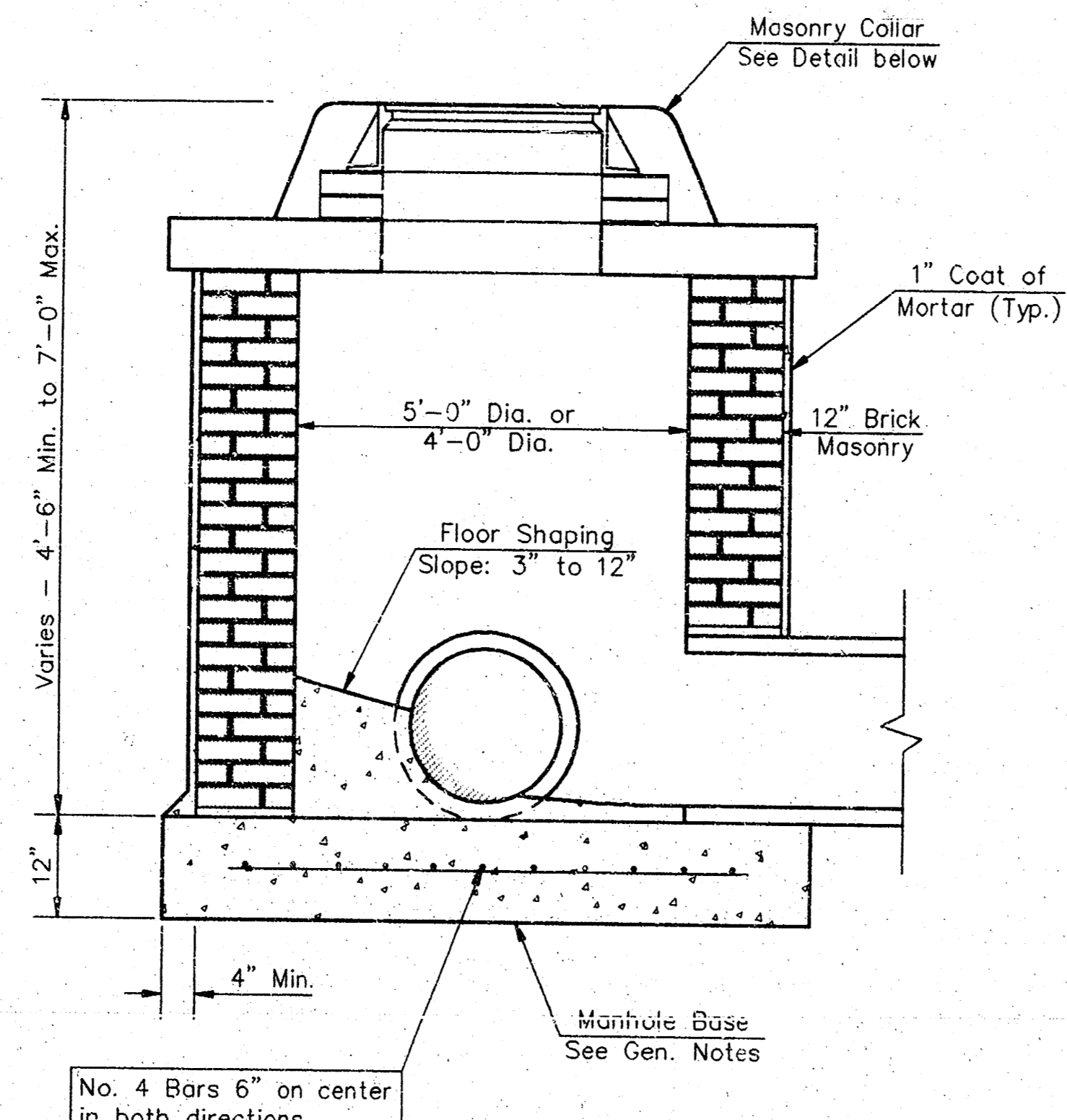
BAUGHMAN COMPANY P.A.
ENGINEERING, SURVEYING, & PLANNING
316-262-7271 • 316 ELLIS • WICHITA, KANSAS 67211

PROJECT NUMBER
488-78-245-82540-000-001

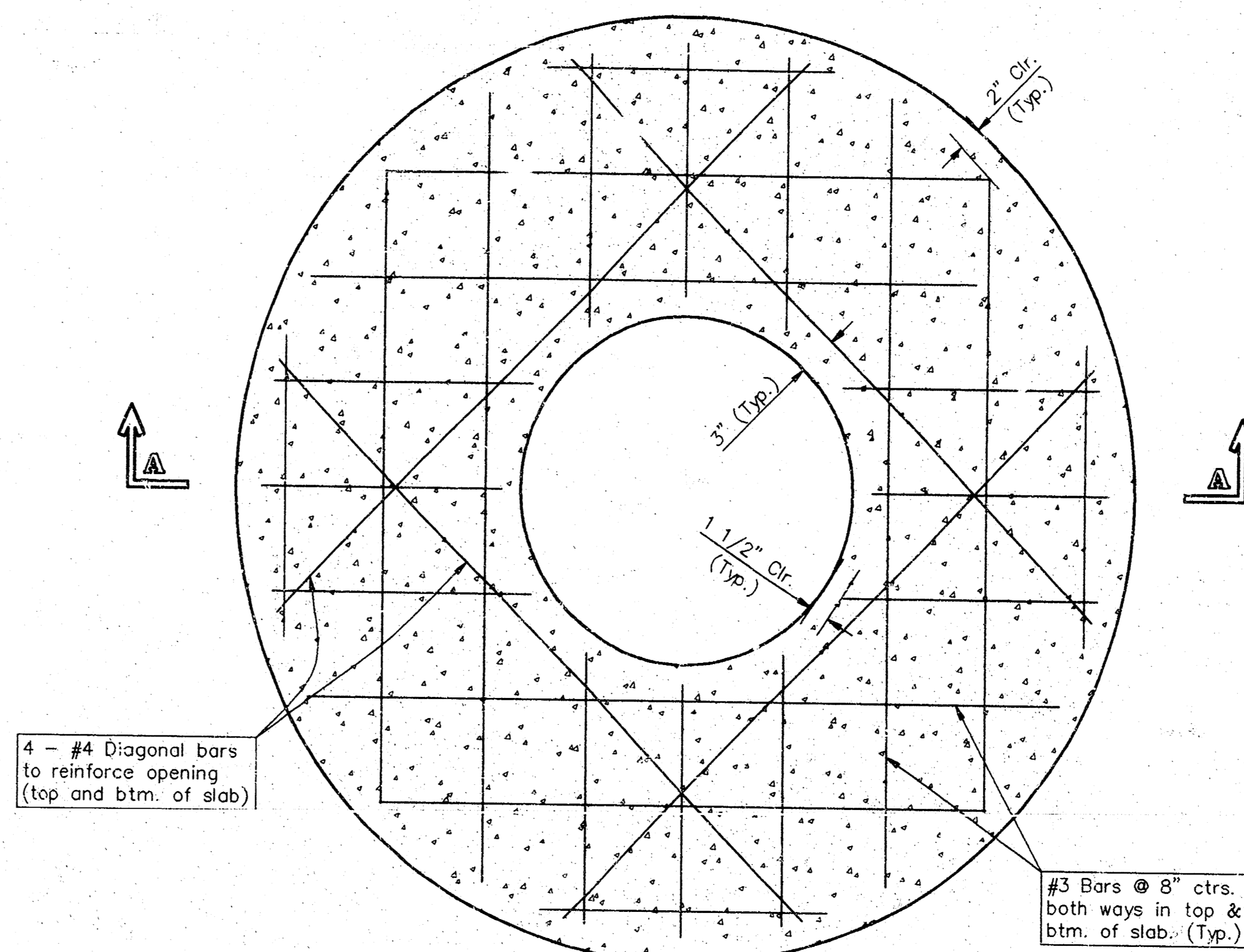
DESIGN BP/DY	DRAWN DY	APPROVED	DATE 10/95	SCALE Noted	SHEET 3 OF 7
-----------------	-------------	----------	---------------	----------------	-------------------------------------



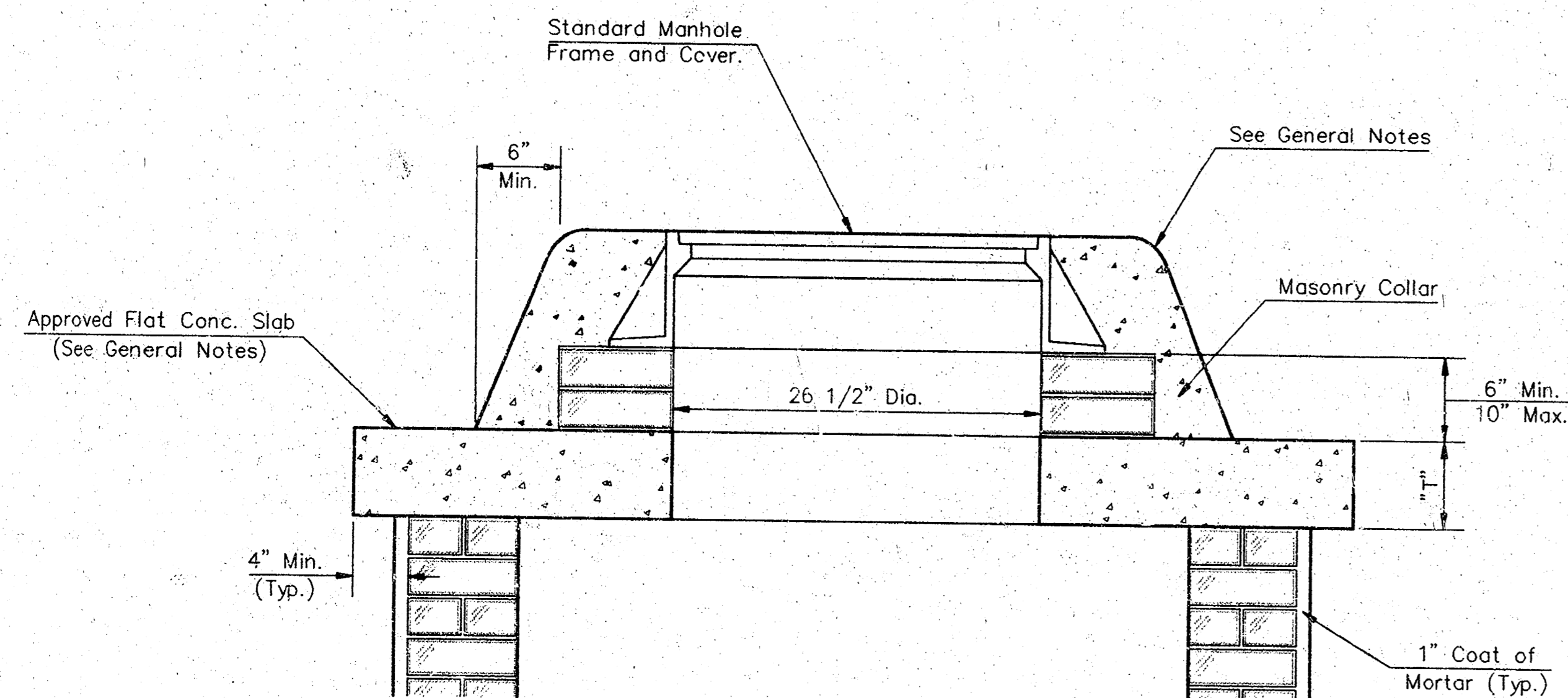
SHALLOW TYPE "A" MANHOLE



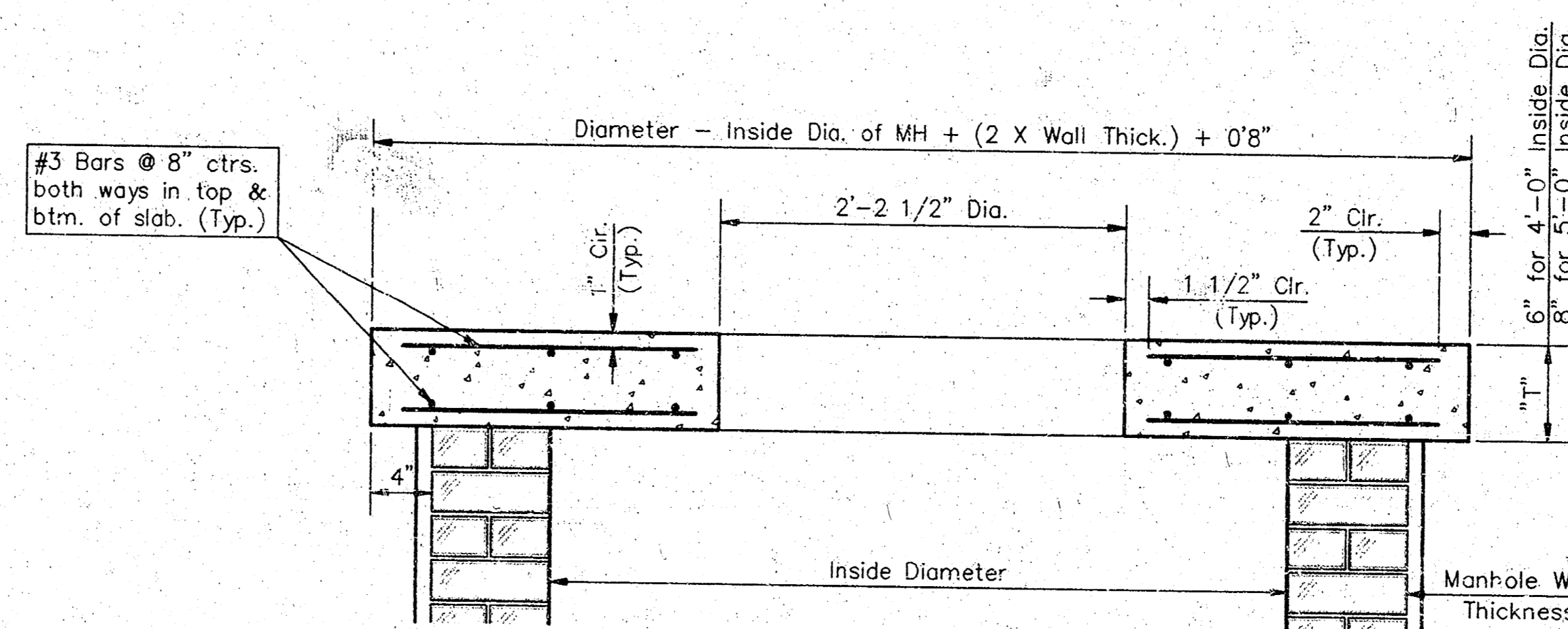
SHALLOW TYPE "B" MANHOLE



PLAN

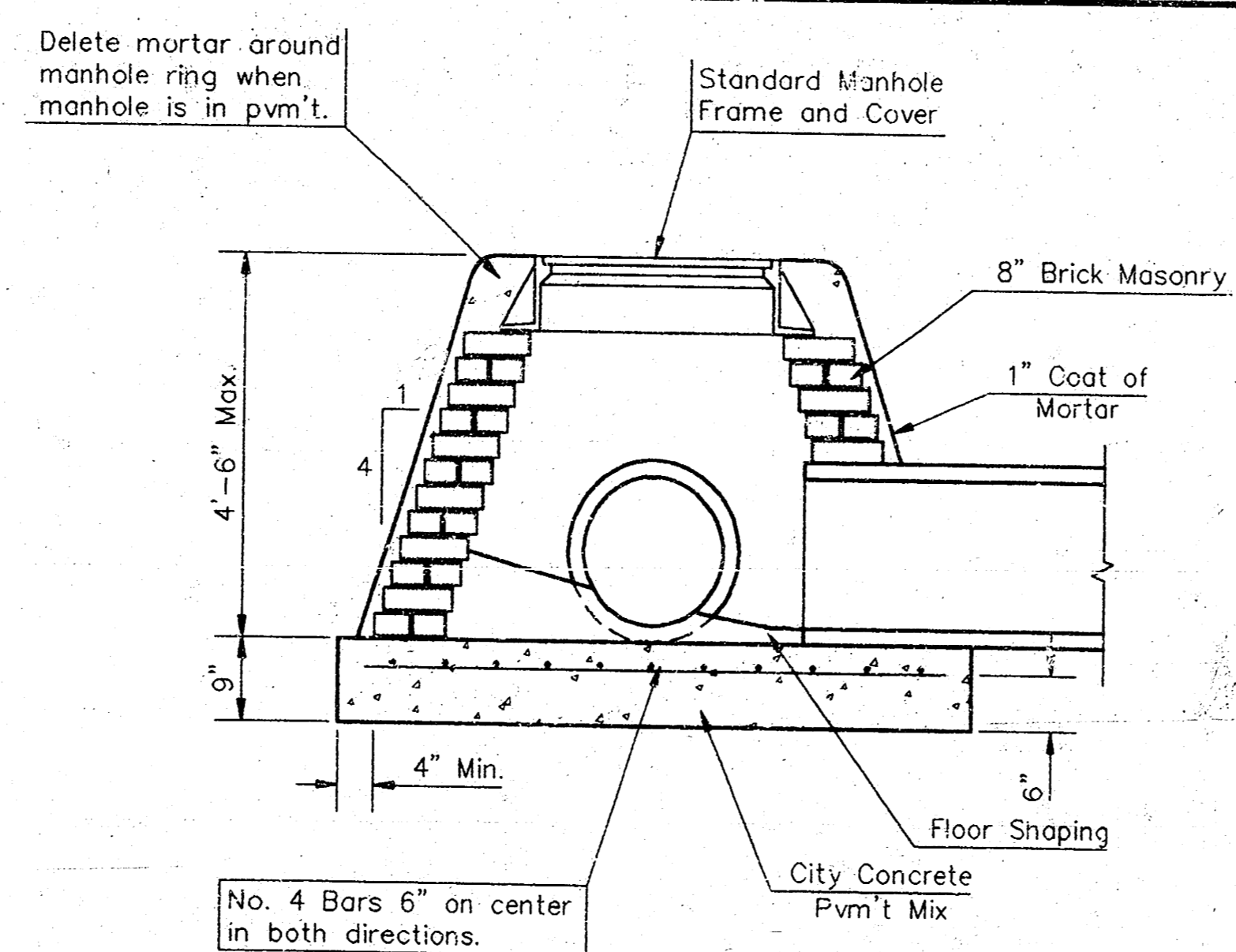


MASONRY COLLAR DETAIL

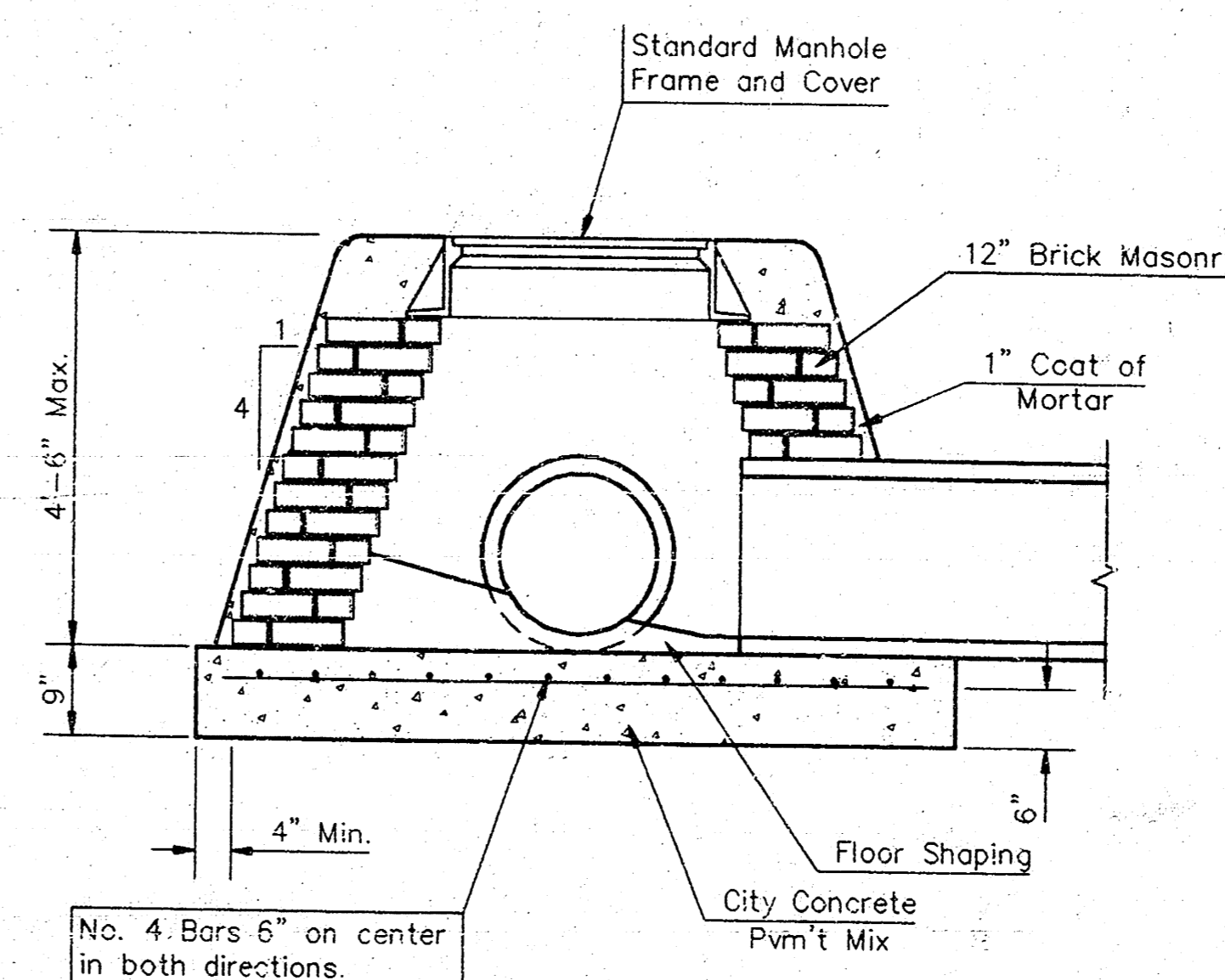


SECTION A-A

FLAT CONCRETE SLAB DETAILS



SPECIAL SHALLOW TYPE "A" MANHOLE



SPECIAL SHALLOW TYPE "B" MANHOLE

GENERAL NOTES

- Mortar used in masonry construction shall contain 8 sacks of cement per cubic yard. Concrete used in manhole bases shall conform to the requirements of concrete for concrete pavement construction as specified in the city standard paving specifications using city concrete cement mix without air entraining admixture. Mortar shall be placed around the manhole ring as shown on the drawings when manholes are constructed in unpaved areas. Type "A" shallow manholes can be used on sewers when the manhole is not located within public street pavement. Manholes constructed where pipe sizes are smaller than 24" shall have an inside diameter of 4'. Manholes constructed where pipe sizes are 24" or larger shall have an inside diameter of 5'. Completed manhole shall be without leaks and water tight.
- Reinforcing steel shall be installed in the manhole bases and shall consist of no. 4 bars placed on 6" centers in both directions. The manhole base reinforcement shall be placed 6" above the bottom of the manhole base. All costs for furnishing and installing reinforcing steel shall be included in the unit price bid for the manhole.
- The floors of all manholes shall be shaped with flow channels such that the manholes will be self cleaning and free of areas where solids could be deposited as sewage flows through the manhole from all inlet pipes to the outlet pipe. Flow channels shall be formed to match the bottom halves of the inflowing pipes and the outflowing pipe as shown by the drawings. Manhole floors shall have slopes of 3 inches per foot in the areas outside of the flow channels sloped toward the flow channels. Pipes laid through manholes shall have the top half removed to neat lines for the full inside diameter of the manhole. Manhole floors shall then be shaped around the bottom half of the pipe which forms the flow channel.
- Pipes installed within the excavation made for the manhole shall be cradled with concrete to the limits of the manhole excavation. When clay pipe is used, the cradle shall extend to the first joint outside the manhole. The cradle shall be terminated at the clay pipe joint in a manner which will maintain the flexibility of the joint. Cost of cradle within manhole excavation or to clay pipe joints adjacent to manhole shall be included in the unit price bid for the manhole.
- Manhole cover castings and manhole frame castings shall conform to the requirements as indicated in the standard specifications and as shown in the standard detail drawings.
- The crowns of inflowing pipes shall never be set lower than the crown of the outflowing pipe.
- Standard shallow manholes type "A" and "B" shall be paid for at the unit price bid per each for the type and diameter indicated. Standard special shallow manholes type "A" and "B" shall be paid for at the unit price bid per each for the type indicated. All standard shallow manhole diameters will be 4' unless indicated otherwise.
- All brick used in manhole construction shall meet Grade SW of ASTM C652 or C62-87.

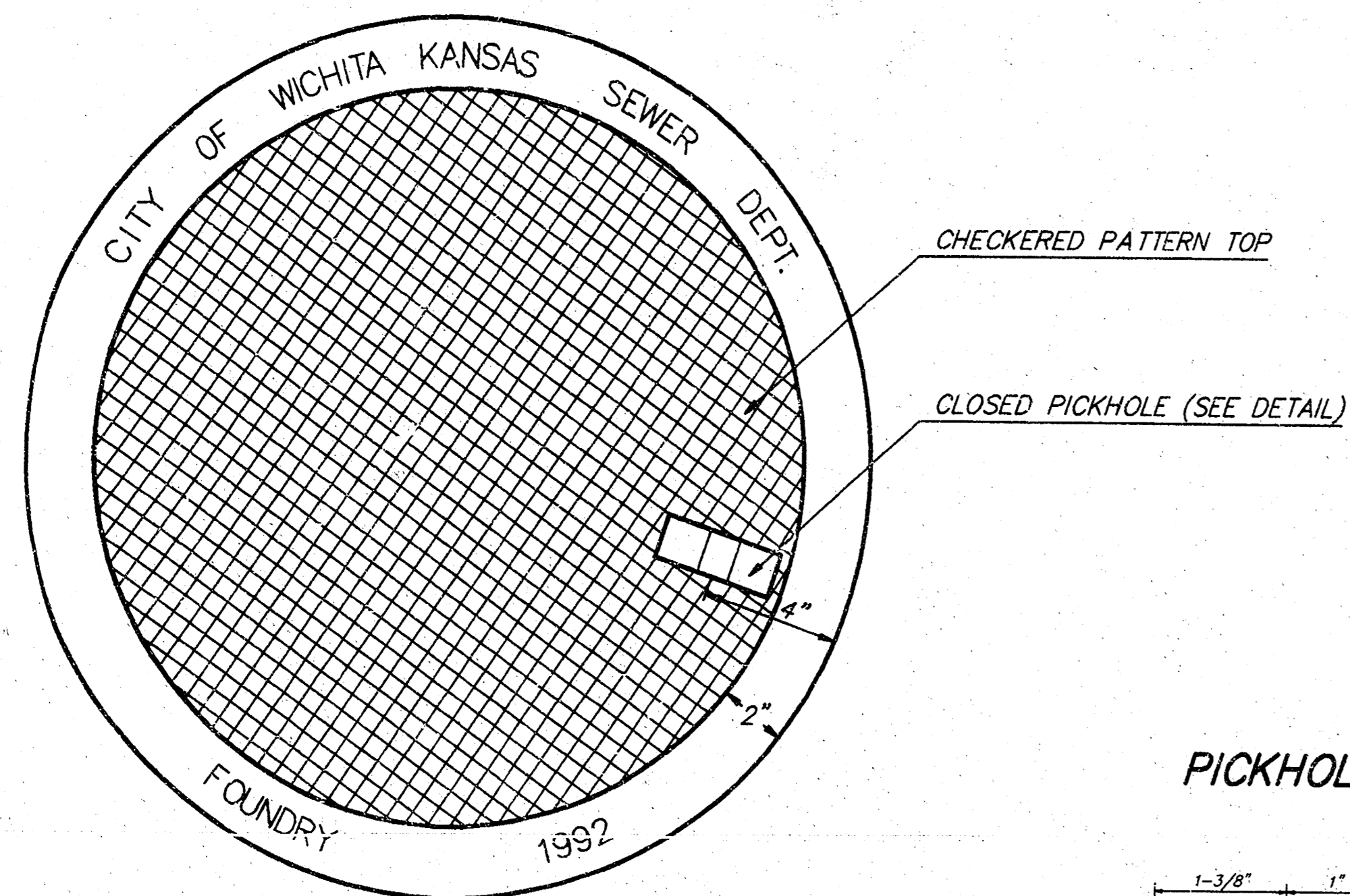
CITY OF WICHITA, KANSAS
STD. SHALLOW MANHOLES
 TYPE "A" AND TYPE "B"

BAUGHMAN COMPANY P. A.
 ENGINEERING, SURVEYING, & PLANNING
 316-282-7277 • 316-282-7278 • WICHITA, KANSAS 67211

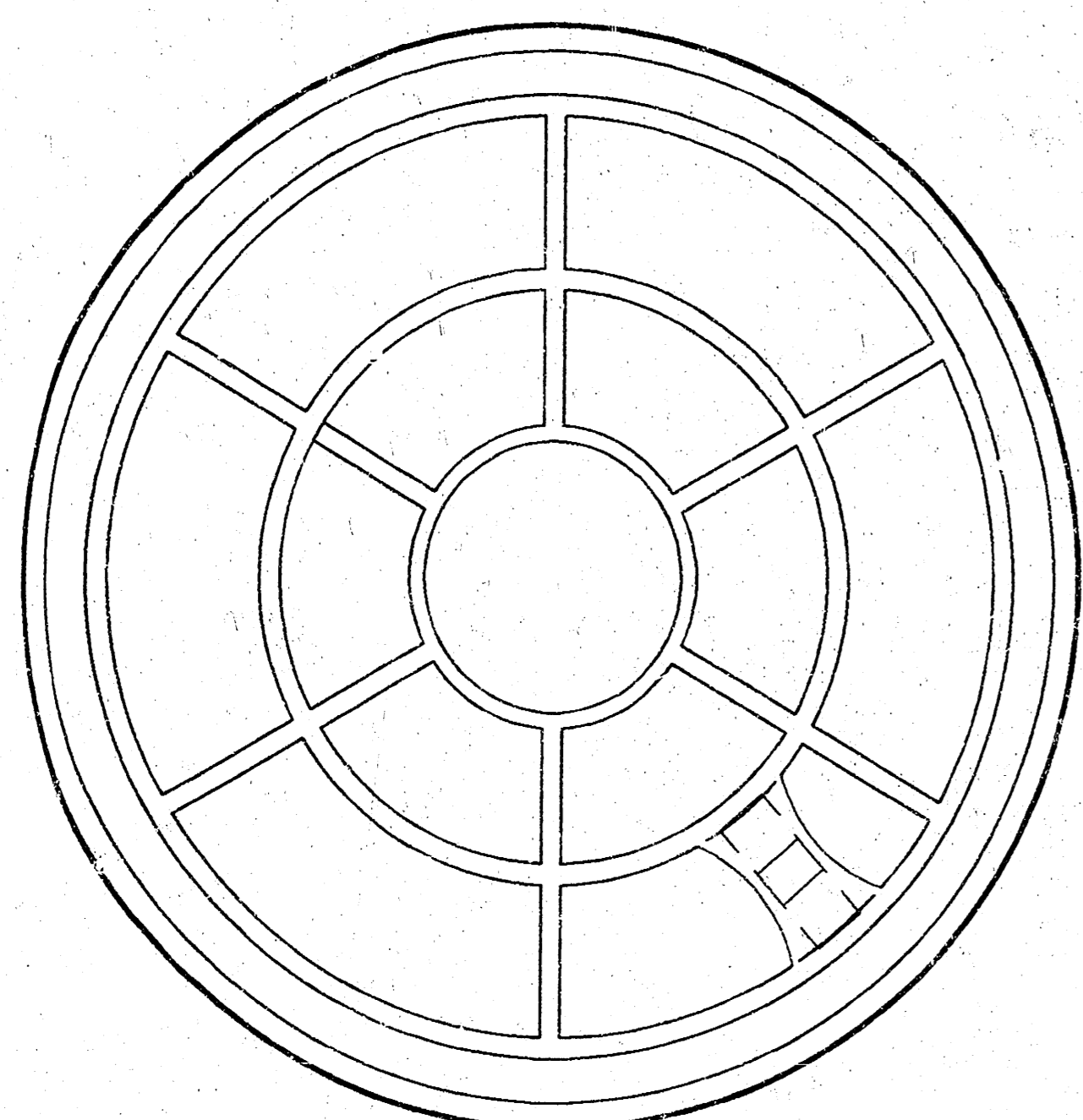
PROJECT NUMBER
488-76-245-82540-000-000-001

DESIGN C.O.W.	DRAWN Staff	APPROVED	DATE 10/95	SCALE None	SHEET 4 OF 7
------------------	----------------	----------	---------------	---------------	-----------------------

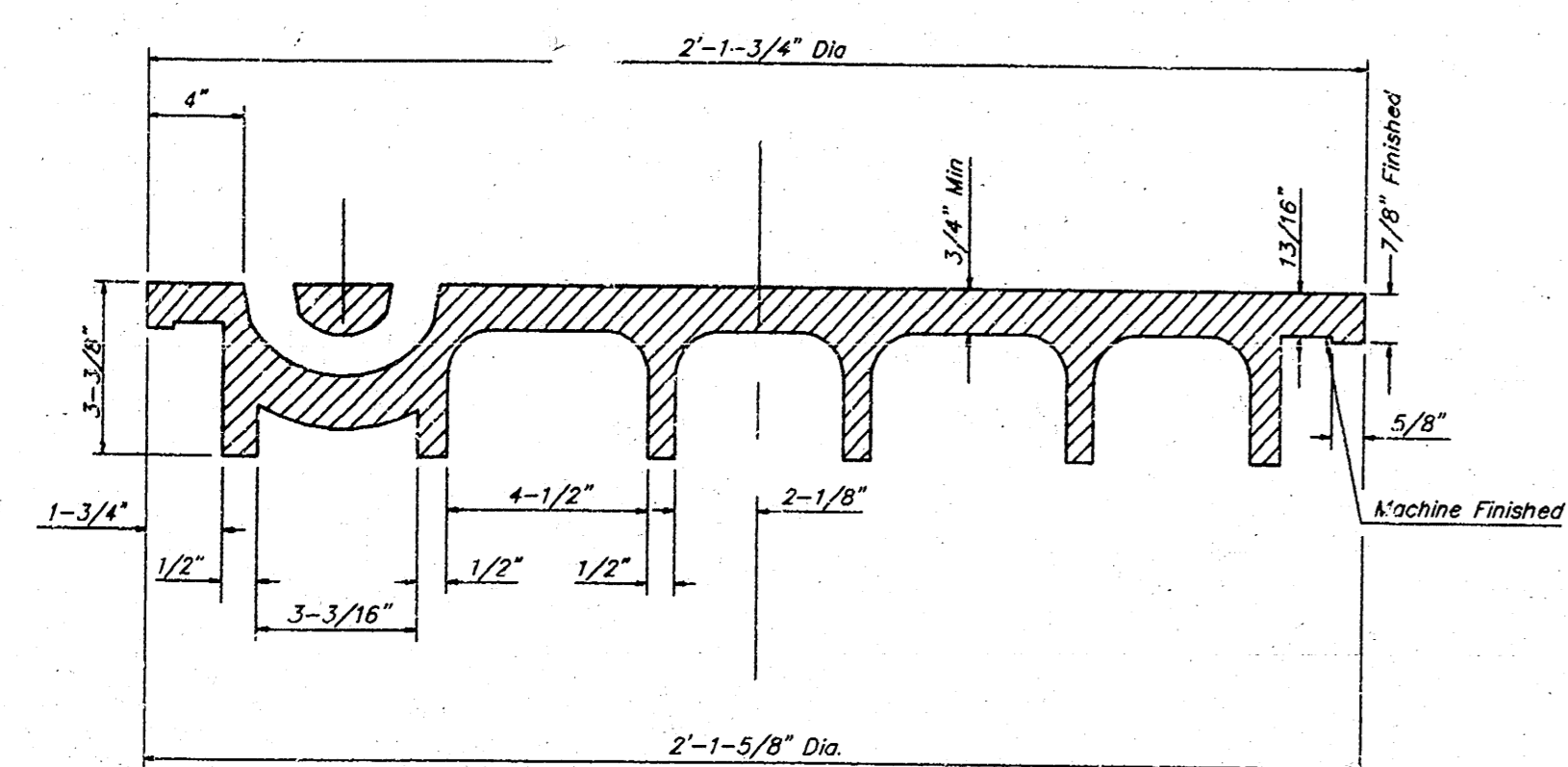
MANHOLE COVER
Weight = 180 Lbs.



TOP VIEW

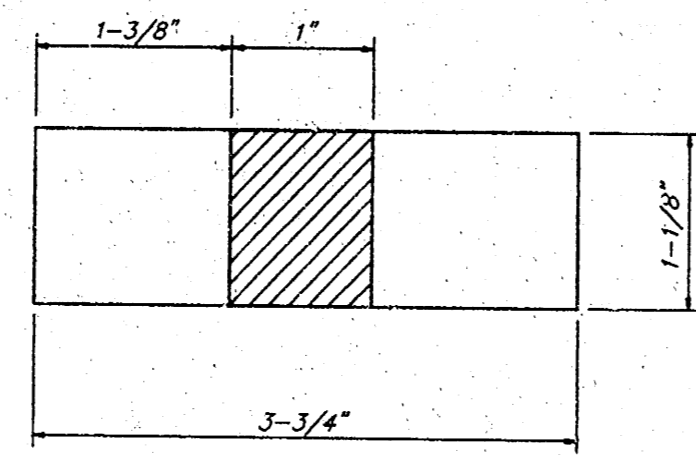


BOTTOM VIEW

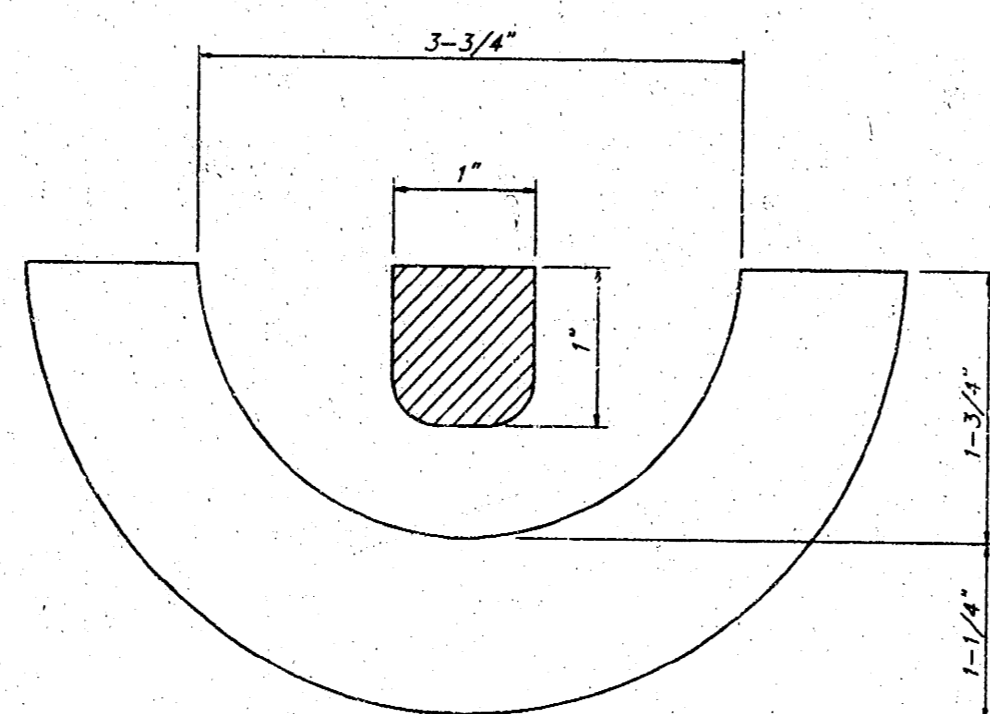


SECTION VIEW

PICKHOLE DETAIL



TOP VIEW

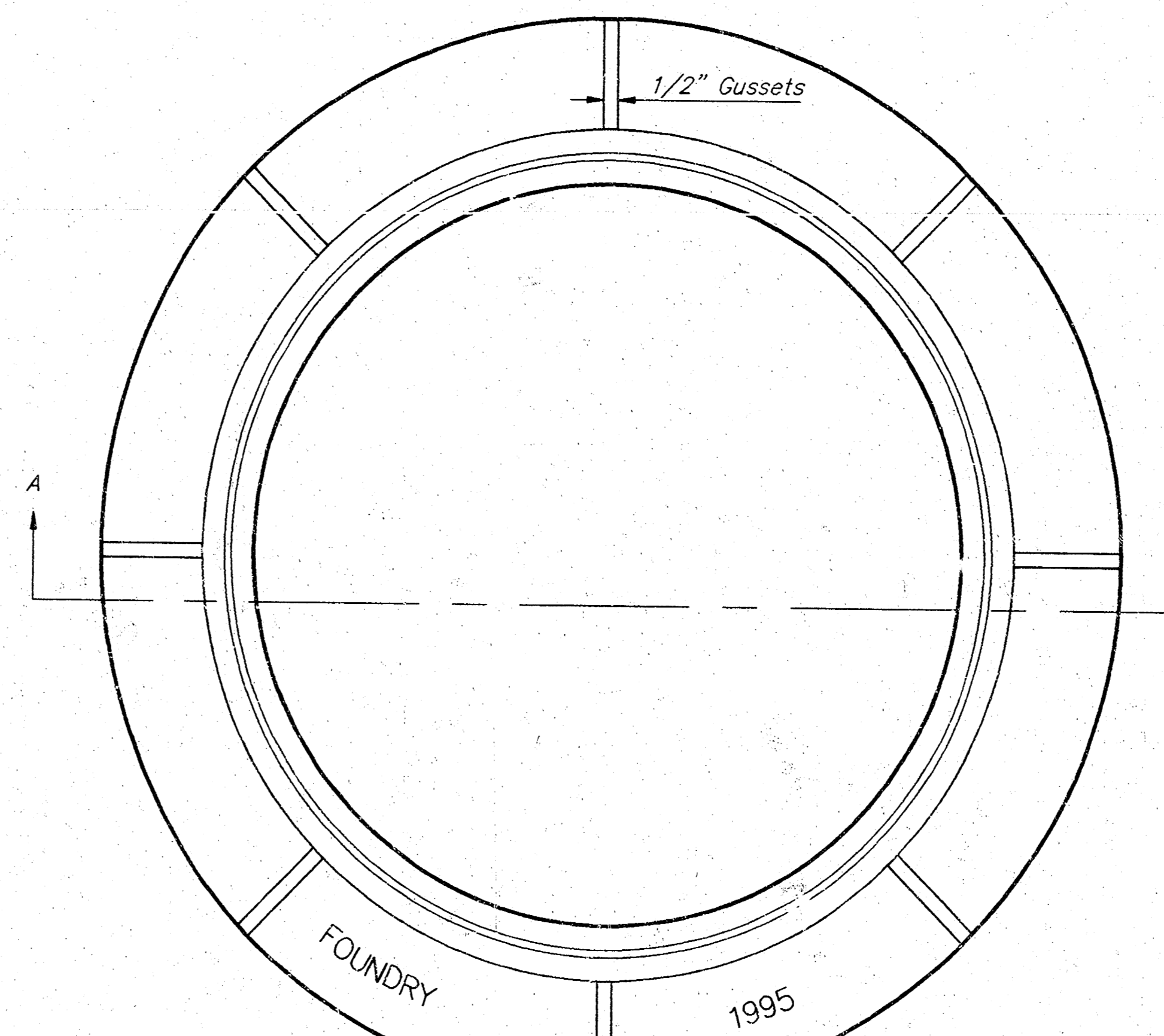


SECTION VIEW

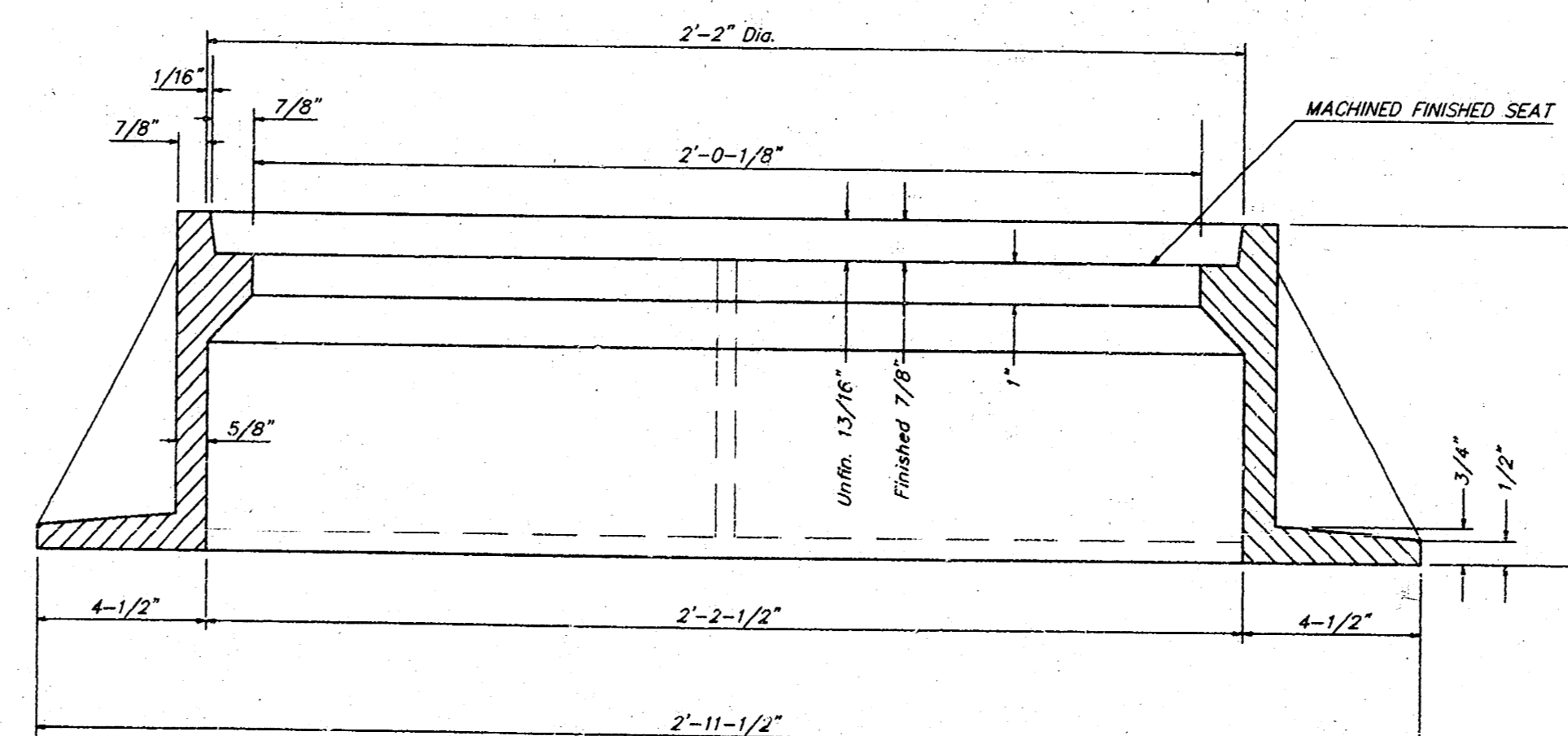
MANHOLE FRAME AND COVER DETAIL

ADOPTED AS STANDARD DESIGN BY
CITY OF WICHITA, KANSAS

MANHOLE FRAME
Weight = 240 Lbs.



TOP VIEW



SECTION A-A

GENERAL NOTES

MANHOLE CASTINGS SHALL BE MANUFACTURED USING GOOD QUALITY GRAY IRON CONFORMING TO CLASS 30 OF A.S.T.M. DESIGNATION A-48. DIMENSIONS AND WEIGHTS SHOWN ON THE DETAILED DRAWINGS SHALL BE CONSIDERED AS MINIMUM REQUIREMENTS AND ANY DEVIATIONS FROM THE DIMENSIONS SHOWN MUST BE SPECIFICALLY APPROVED. THE FINISHED CASTINGS SHALL BE OF UNIFORM QUALITY, FREE FROM BLOWHOLES, POROSITY, HARD SPOTS, SHRINKAGE DISTORTIONS OR OTHER DEFECTS.

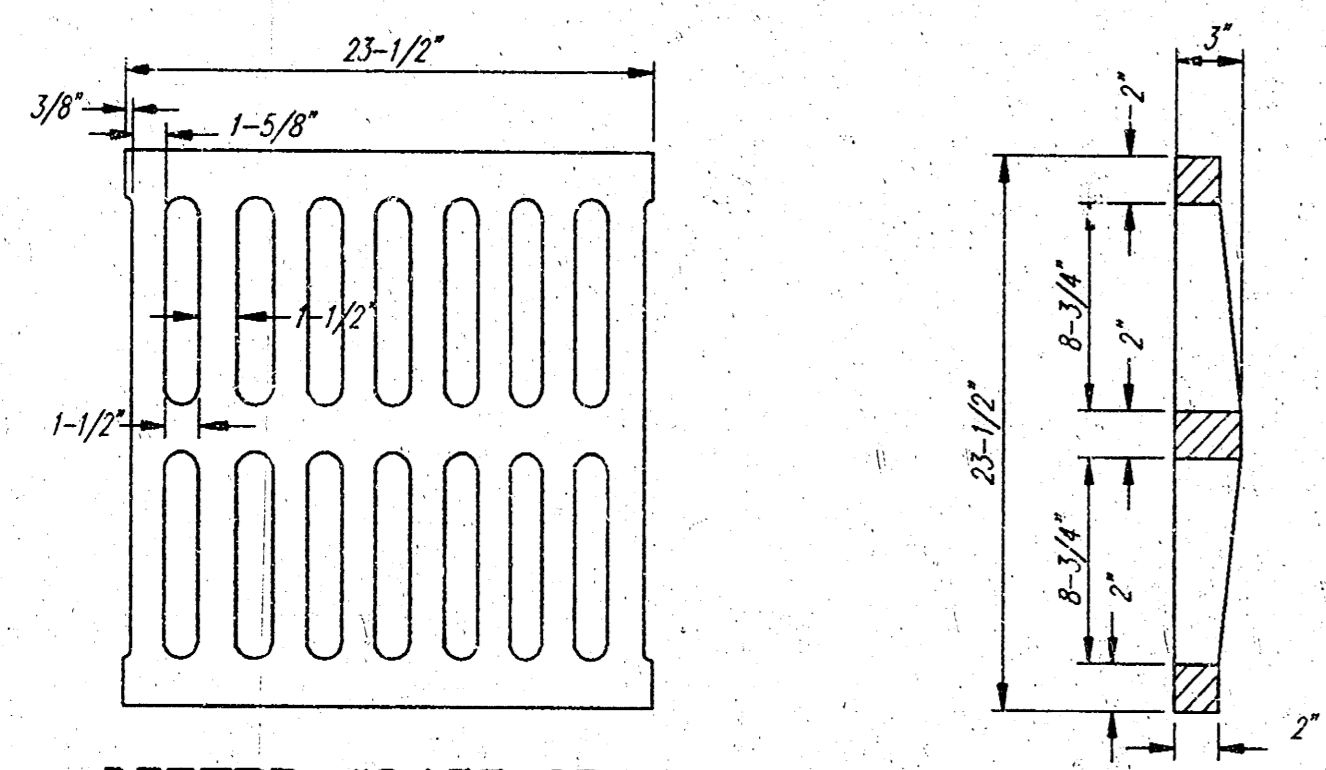
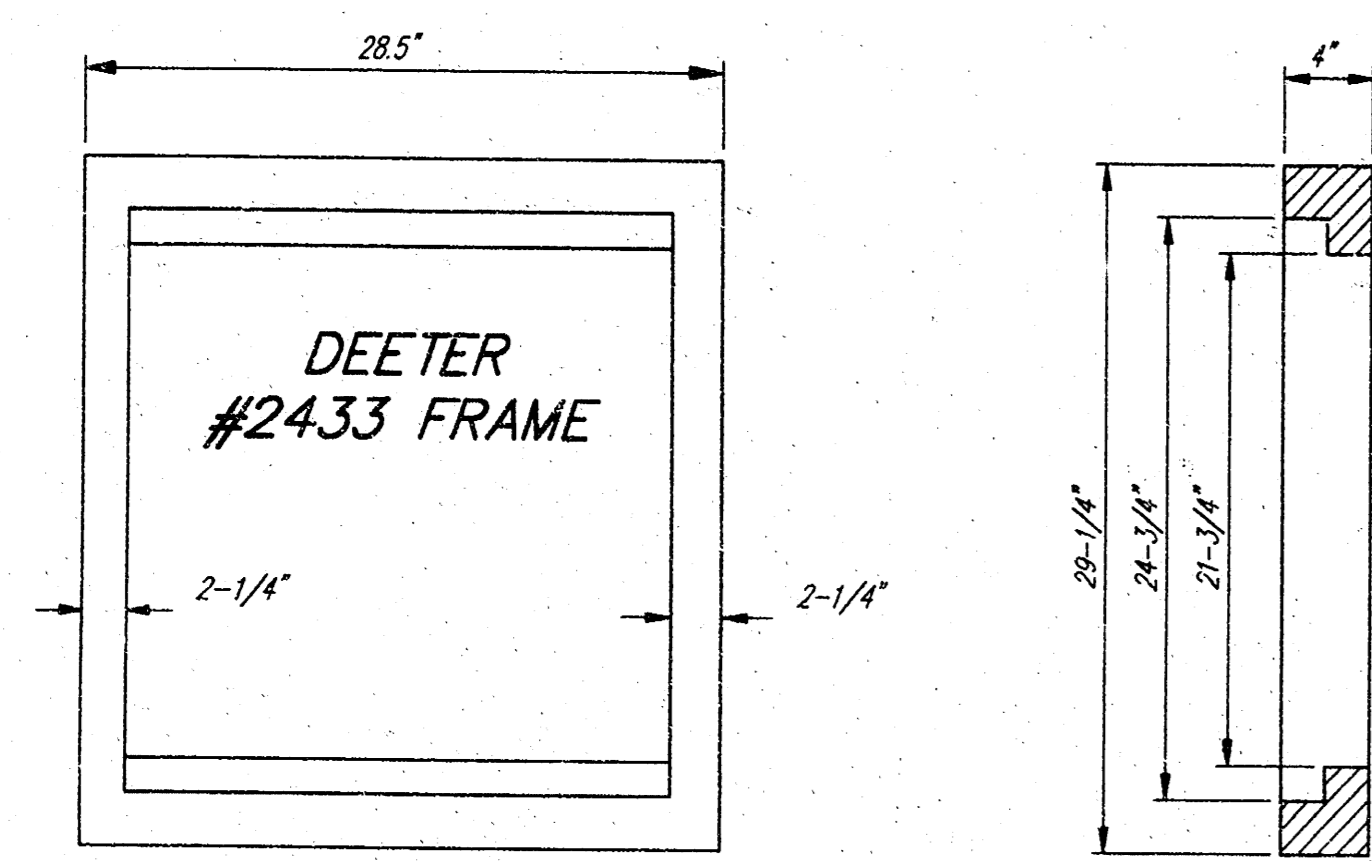
MANHOLE CASTINGS SHALL BE COATED WITH AN ASPHALT PAINT RESULTING IN A SMOOTH, TOUGH AND TENACIOUS COATING WHICH IS NOT BRITTLE OR TACKY.

MANHOLE CASTINGS SHALL BE MANUFACTURED SUCH THAT A COVER MANUFACTURED BY ANY ONE FOUNDRY WILL FIT INTERCHANGEABLY INTO A FRAME MANUFACTURED BY ANOTHER FOUNDRY AND STILL MEET ALLOWABLE CLEARANCES AND NON-ROCKING REQUIREMENTS. THIS WILL REQUIRE MANUFACTURING OF THE MATCHING FACES ON THE COVER AND THE FRAME TO CLOSE TOLERANCES.

THE OUTSIDE CIRCUMFERENCE OF THE VERTICAL FACE OF THE COVER AND THE INSIDE CIRCUMFERENCE OF THE VERTICAL FACE IN THE FRAME RECESS SHALL BE MANUFACTURED TO TOLERANCES SUCH THAT THE CLEARANCE BETWEEN THE COVER AND FRAME WILL NOT EXCEED 1/8" AT ANY POINT AROUND THE CIRCUMFERENCE OF THE COVER. THE SEATING SURFACES BETWEEN THE COVER AND FRAME SHALL BE MACHINED SUCH AS THESE SURFACES SHALL MAKE FULL CONTACT FOR THEIR FULL CIRCUMFERENCE TO PRECLUDE THE COVER FROM ROCKING IN THE FRAME.

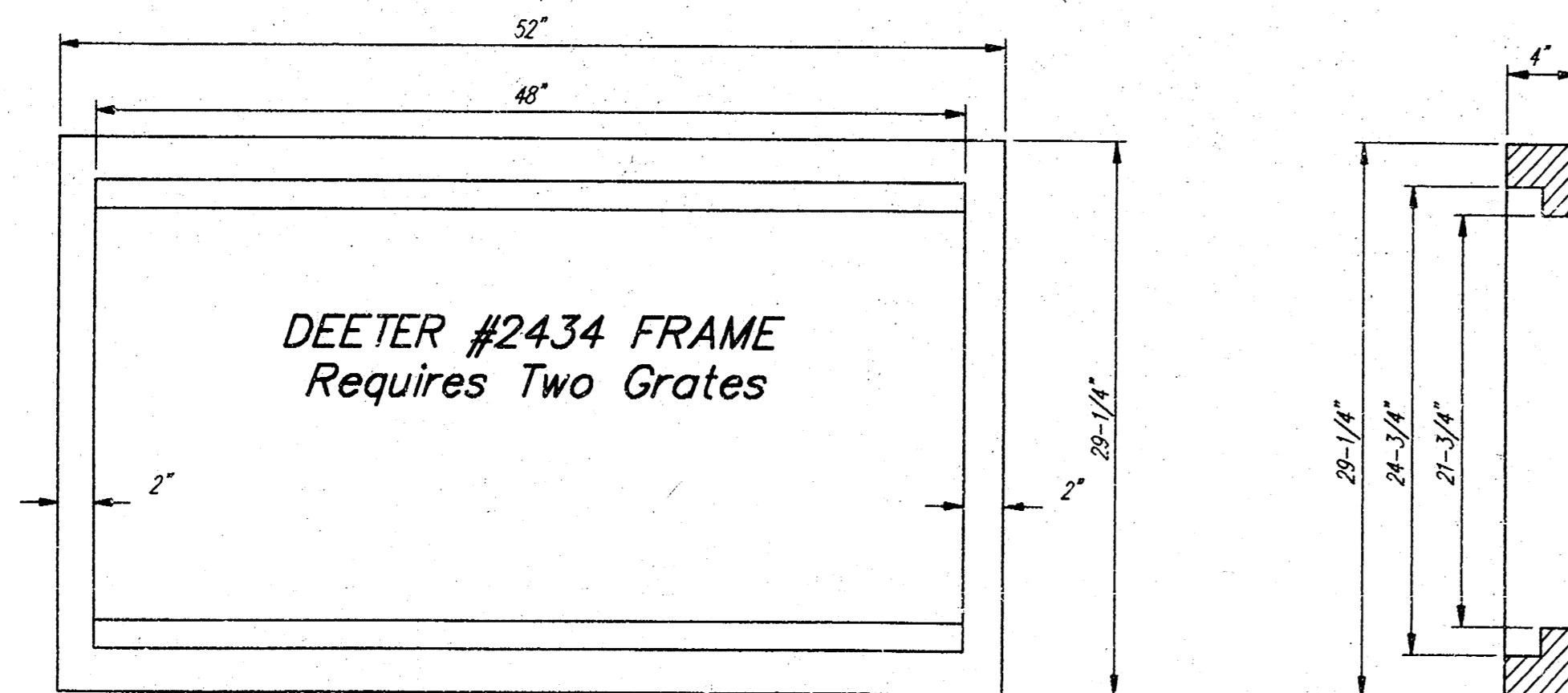
THE MANHOLE FRAME AND COVER SHALL BE MARKED WITH LETTERING INDICATING THE NAME OF THE MANUFACTURER AND THE YEAR WHEN THE COVER OR FRAME WAS CAST. THE COVER SHALL BE FURTHER IDENTIFIED WITH REGARDS TO OWNERSHIP USING LETTERS AT LEAST 1 INCH IN HEIGHT. THIS IDENTIFICATION SHALL BE "CITY OF WICHITA SEWER DEPARTMENT". THE WORD DEPARTMENT MAY BE ABBREVIATED. THE TEXTURE OF THE TOP SURFACE OF THE COVER SHALL BE MANUFACTURED IN A CHECKERED PATTERN DESIGN AS INDICATED ON THE DRAWINGS. SMOOTH BLOCKOUTS SHALL BE UTILIZED TO HIGHLIGHT THE LETTERING ON THE COVER SURFACE. THE TOTAL AREA OF SMOOTH SURFACE BLOCKOUT SHALL NOT EXCEED THE AREA AS INDICATED ON THE DRAWING. POSITIONING OF SMOOTH BLOCKOUTS AND LETTERING MAY VARY FROM THAT SHOWN ON THE DETAILED DRAWING.

Manhole FRAME & COVER Detail - City of Wichita Standard Design	
BAUGHMAN COMPANY P. A. ENGINEERING, SURVEYING, & PLANNING 318-262-7271 • 315 ELLIS • WICHITA, KANSAS 67211	
PROJECT NUMBER 488-76-245-92540-000-001	
DESIGN C.O.W.	DRAWN Staff
APPROVED	DATE 10/95
SCALE None	SHEET 5 OF 7



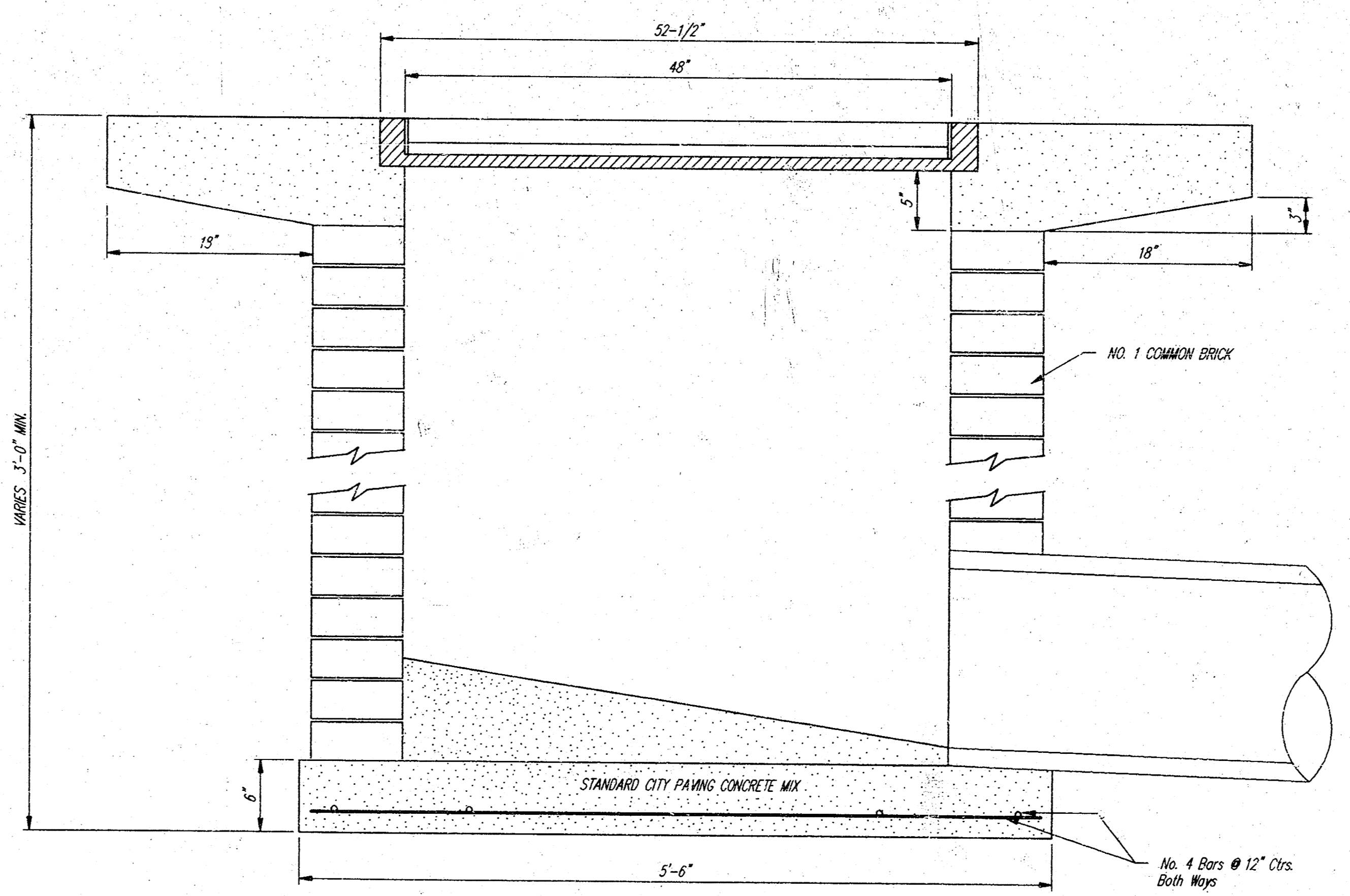
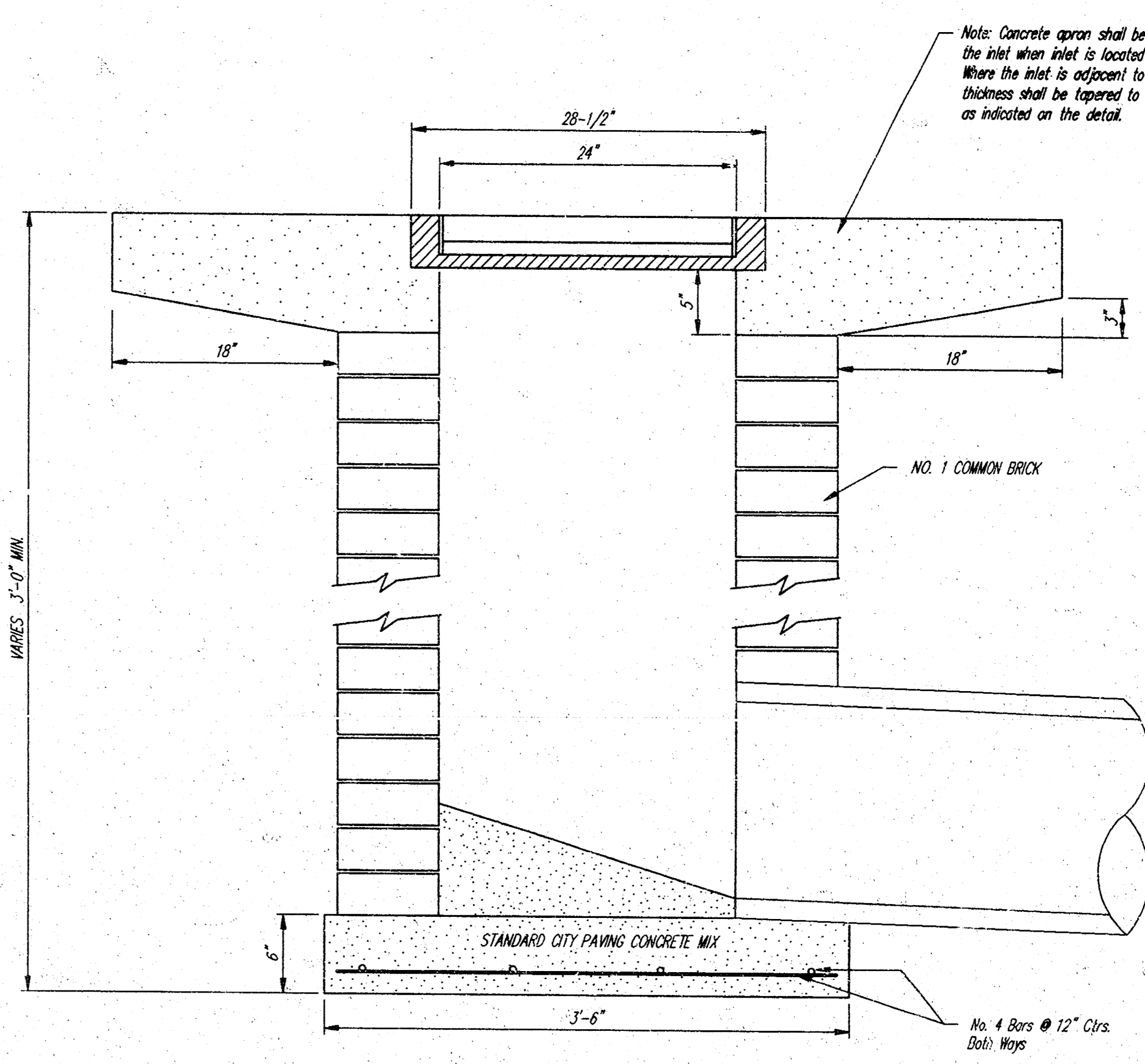
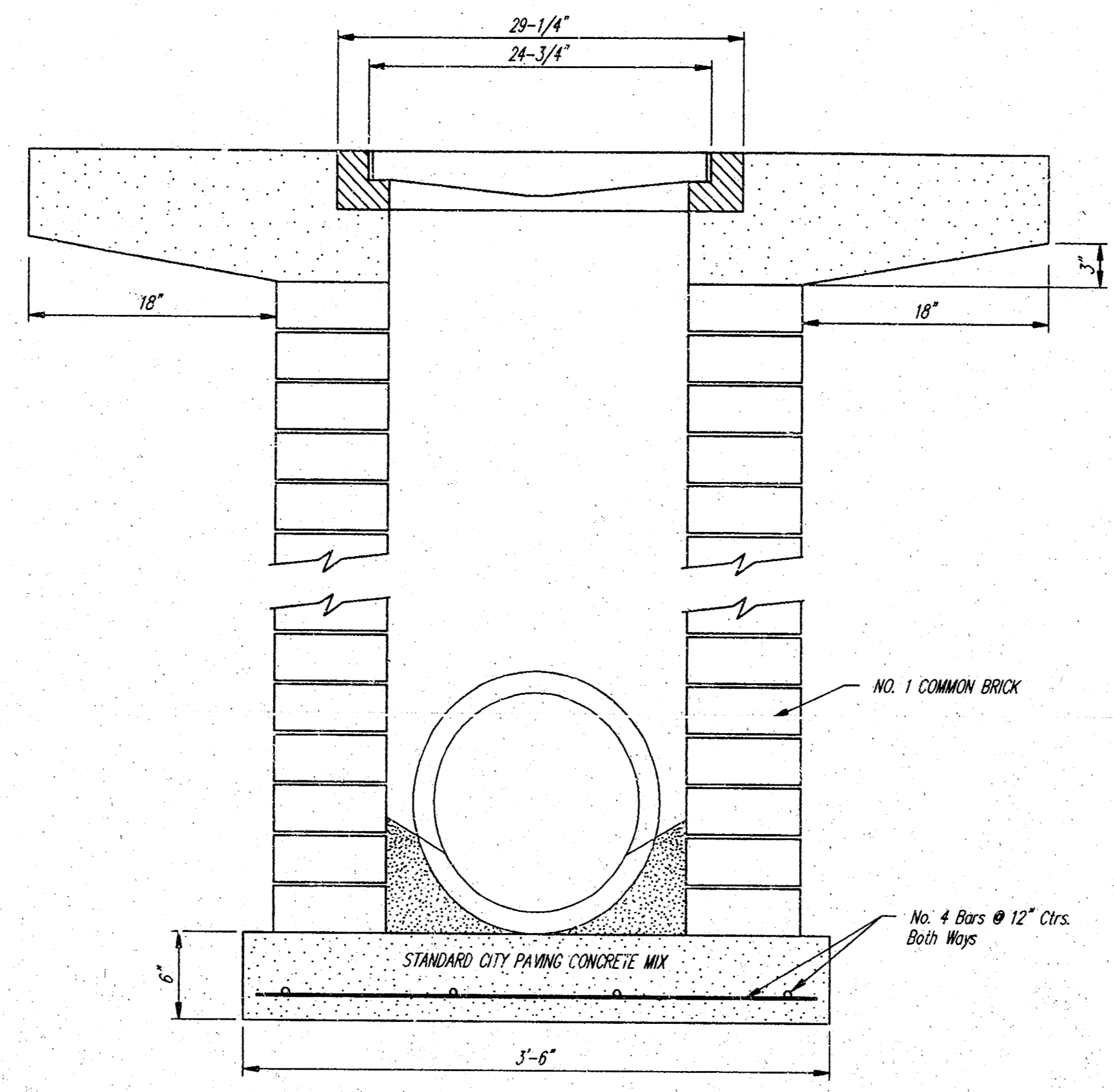
DEETER #2433 GRATE

24" x 24" Frame and Grate Detail



Double 24" x 24" Frame Detail

NOTE: Grates shall be imprinted on the top surface with "CITY OF WICHITA" using letters at least 1" in height. Other marking methods may be approved by the engineer.



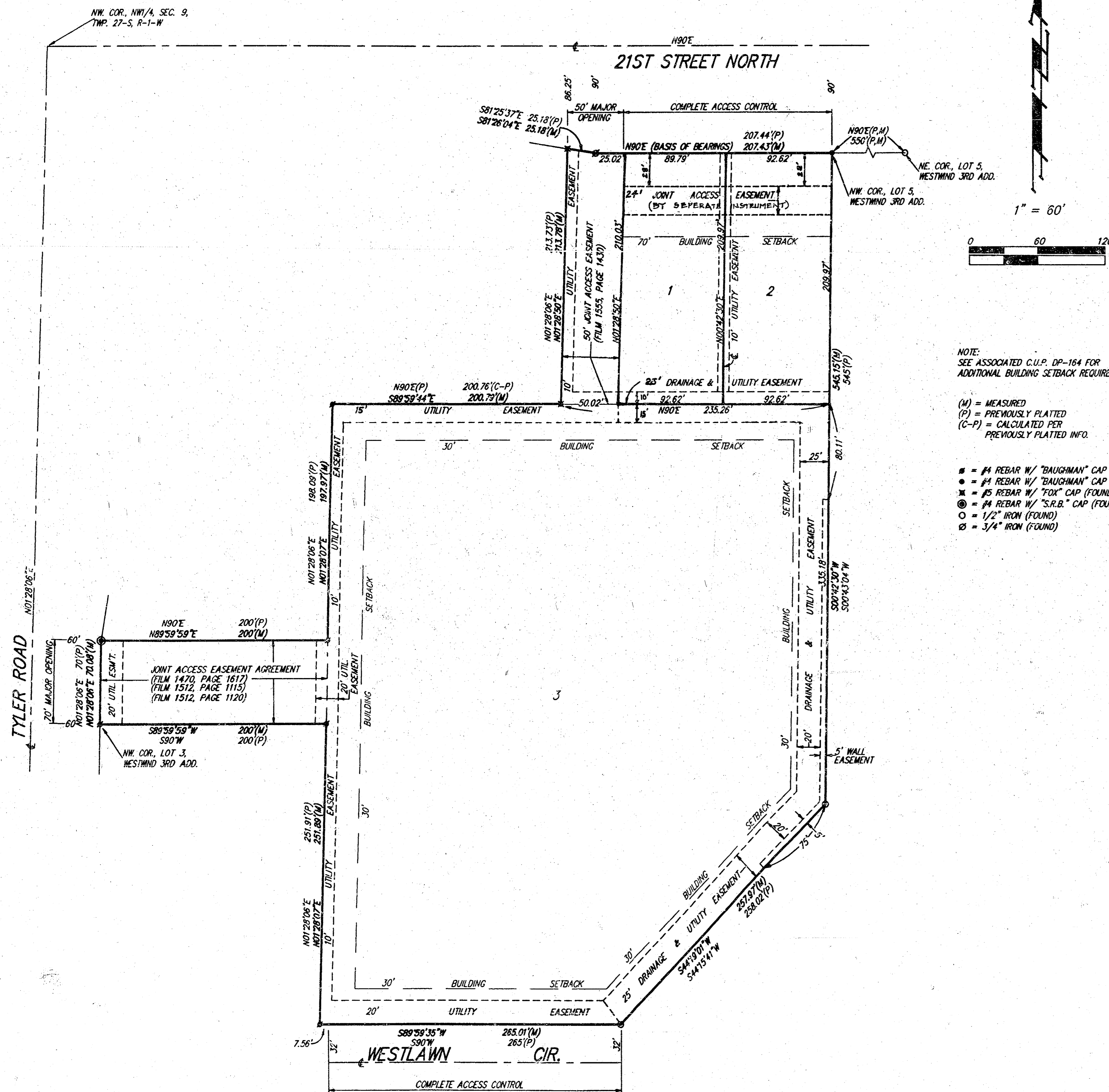
City of Wichita Standard
Drop Inlet

BAUGHMAN COMPANY P. A.
ENGINEERING, SURVEYING, & PLANNING
316-262-7271 • 315 ELLIS • WICHITA, KANSAS 67211

PROJECT NUMBER
468-76-245-82540-000-001

DESIGN C.O.W.	DRAWN Staff	APPROVED B.P.	DATE 10/95	SCALE None	SHEET OF 6 7
------------------	----------------	------------------	---------------	---------------	------------------------------

WESTWIND 5TH ADDITION WICHITA, SEDGWICK COUNTY, KANSAS



NOTE:
SEE ASSOCIATED C.U.P. DP-164 FOR
ADDITIONAL BUILDING SETBACK REQUIREMENTS.

(M) = MEASURED
(P) = PREVIOUSLY PLATTED
(C-P) = CALCULATED PER
PREVIOUSLY PLATTED INFO.

- = #4 REBAR W/ "BAUGHMAN" CAP (FOUND)
- = #4 REBAR W/ "BAUGHMAN" CAP (SET)
- ✕ = #6 REBAR W/ "TDC" CAP (FOUND)
- ⊙ = #4 REBAR W/ "S.R.B." CAP (FOUND)
- = 1/2" IRON (FOUND)
- ⊗ = 3/4" IRON (FOUND)

State of Kansas) SS We, Baughman Company, P.A., Surveyors in
Sedgwick County) do hereby certify that we have surveyed
and platted "WESTWIND 5TH ADDITION", Wichita, Sedgwick County, Kansas,
and that the accompanying plat is a true and correct exhibit of the
property surveyed, described as and being a replat of Lot 4, Westwind 3rd
Addition, Wichita, Kansas.

Existing public easements and dedications being vacated by virtue
of K.S.A. 12-512(b).

All being situated in the NW1/4 of Sec. 9, Twp. 27-S, R-1-W of
the 6th P.M., Sedgwick County, Kansas.

Baughman Co., P.A.

Gregory F. Severns 10-4-95 Surveyor

Know all men by these presents that we,
the undersigned, have caused the land in the surveyors certificate to
be platted into lots to be known as "WESTWIND 5TH ADDITION", Wichita,
Sedgwick County, Kansas. The utility easements are hereby granted as
indicated for the construction and maintenance of all public utilities.
The drainage and utility easements are hereby granted as indicated for drainage
purposes and for the construction and maintenance of all public utilities.
The wall easements are hereby granted as indicated for the construction
and maintenance of a private wall and utilities shall be allowed to cross
these easements. All abutters rights of access to or from 21st Street
North over and across the north line of Lots 1 and 2 are hereby granted to
the City of Wichita, Kansas. All abutters rights of access to or from
Westlawn Cir. over and across the south line of Lot 3 EXCEPT the West
7.56 feet thereof are hereby granted to the City of Wichita, Kansas.

Jerry D. Newman
Kenneth L. Reichenberger
Mary Ellen Reichenberger

State of Kansas) The foregoing instrument acknowledge
Sedgwick County) before me, this 4th day of OCTOBER, 1995, by
Newman, a single person.

My App'l. Exp. 5/5/99
PHILIP J. MEYER Notary Public
STATE OF KANSAS

State of Kansas) The foregoing instrument acknowledge
Sedgwick County) before me, this 4th day of OCTOBER, 1995, by
Reichenberger and Mary Ellen Reichenberger, husband and wife.

My App'l. Exp. 5/5/99
PHILIP J. MEYER Notary Public
STATE OF KANSAS

the undersigned, holders of a mortgage
on the above described property, do hereby consent to this plat
of "WESTWIND 5TH ADDITION", Wichita, Sedgwick County, Kansas.

By: Glen W. Porter, Vice President
Glen W. Porter

State of Kansas) The foregoing instrument acknowledged
Sedgwick County) before me, this 4th day of October, 1995, by
Glen W. Porter, Vice President, of The Mission Bank, on behalf
of the bank.

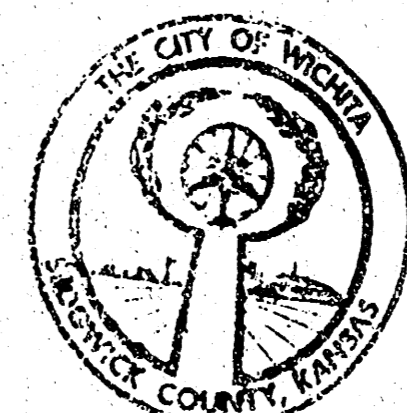
CAROL ANN BURTIS Notary Public - State of Kansas
My App'l. Exp. 6/18/99
Carol Ann Burtis Notary Public

This plat of "WESTWIND 5TH ADDITION", Wichita,
Sedgwick County, Kansas has been submitted to and approved by
the Wichita-Sedgwick County Metropolitan Area Planning Commission,
Wichita, Kansas.
Dated this 31st day of August, 1995.
Wichita-Sedgwick County Metropolitan Area Planning Commission



John W. McKay, Jr. Chairman
Marvin S. Krout Secretary

This plat approved and all dedications
shown hereon accepted by the City Council of the City of Wichita,
Kansas, this 24th day of OCTOBER, 1995.



Bob Knight Mayor
Pat Burnett Deputy City Clerk

Entered on transfer record this _____ day
of _____, 1995.

Susan E. Crackett-Spoon County Clerk

State of Kansas) This is to certify that this plat has been
Sedgwick County) filed for record in the office of the Register of Deeds, this _____ day
of _____, 1995, at _____ o'clock _____ M.; and is duly
recorded.

Pat Kettler Register of Deeds

Ed Resa Deputy