

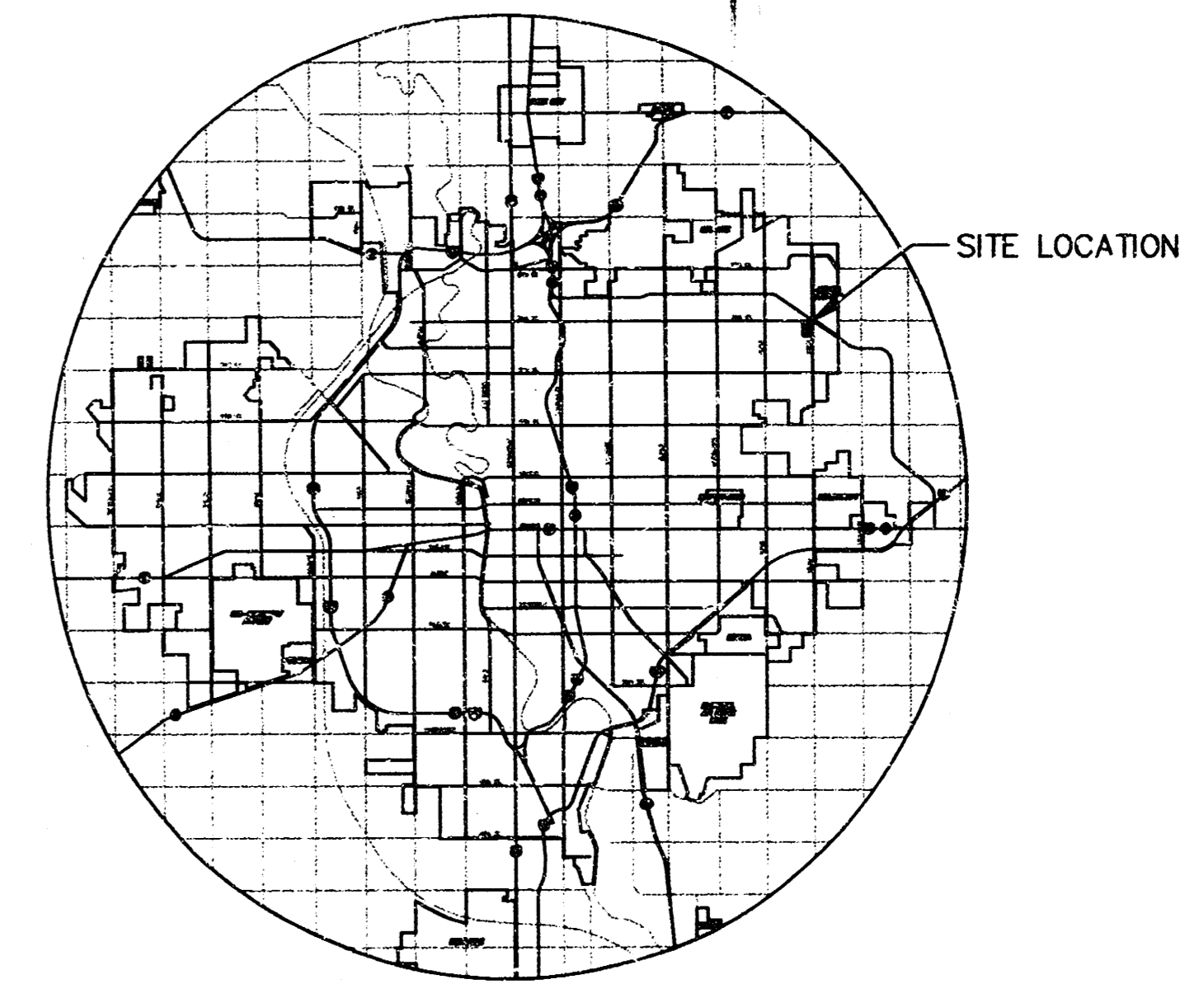
STORM WATER SEWER PLANS FOR  
**STORM WATER SEWER #474**  
 IN  
**FOX POINTE SECOND ADDITION**

AN ADDITION TO THE CITY OF WICHITA  
 SEDGWICK COUNTY, KANSAS

PROJECT NO. 468-82579

MICHAEL E. LINDEBAK, CITY ENGINEER

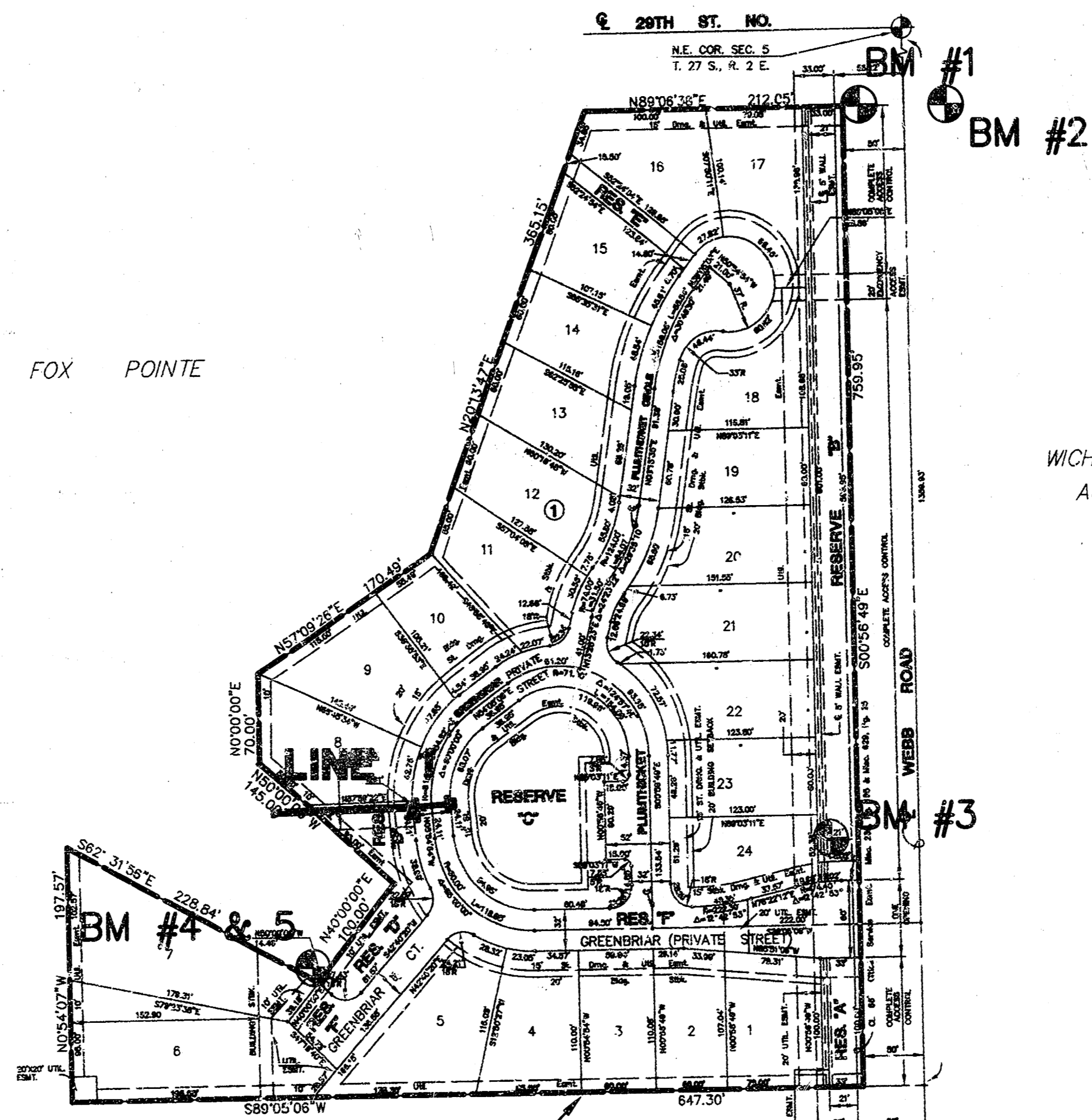
INDEX CODE 750794



LOCATION MAP

**GENERAL NOTES**

1. THE TOPS OF INLETS AND MANHOLES AS NOTED ON THE PLANS MAY VARY SO AS TO MEET PROPOSED TOP OF CURB ELEVATIONS OR PAVEMENT ELEVATIONS. THE FIELD ENGINEER SHALL LOCATE INLETS AND MANHOLES WITH REFERENCE TO PROPOSED PAVING PLANS OF THE PERTINENT STREETS.
  2. ALL CONCRETE SHALL BE STANDARD PAVING MIX UNLESS OTHERWISE NOTED.
  3. THE CONTRACTOR SHALL BE RESPONSIBLE FOR PRESERVING PROPERTY IRONS. THE CONTRACTOR SHALL BE REQUIRED TO RE-ESTABLISH ANY PROPERTY IRONS WHICH ARE DAMAGED OR DESTROYED BY HIS CONSTRUCTION OPERATIONS. SUCH IRONS SHALL BE RE-ESTABLISHED BY A LICENSED LAND SURVEYOR IN ACCORDANCE WITH STATE LAWS.
  4. TREES TO BE REMOVED ARE MARKED . ALL TREES WHICH IN THE OPINION OF THE FIELD ENGINEER CAN BE SAVED, SHALL BE SAVED.
  5. CONTRACTOR SHALL NOTIFY UTILITY COMPANIES OF CONSTRUCTION SCHEDULING.
  6. EXISTING UTILITIES AND THEIR LOCATIONS, AS SHOWN ON THE PLANS REPRESENT THE BEST INFORMATION OBTAINABLE FOR DESIGN. LOCATION INFORMATION HAS BEEN OBTAINED FROM THE VARIOUS COMPANIES AND IS EITHER FROM COMPANY UTILITY DRAWINGS OR COMPANY PROVIDED FIELD LOCATIONS. THE PLAN LOCATIONS SHOWN ARE NOT GUARANTEED. ADDITIONAL EXISTING UTILITIES MAY ALSO BE ENCOUNTERED.
  7. CONTRACTOR WILL BE REQUIRED TO PROVIDE A MINIMUM ADVANCE NOTICE OF FORTY-EIGHT (48) HOURS TO UTILITY COMPANIES TO STARTING ANY EXCAVATION AS FOLLOWS:  
 KANSAS ONE-CALL 1-800-344-7233  
 OR 687-2470 (LOCAL WICHITA)
- THE CONTRACTOR MUST NOTIFY THE FOLLOWING IN CASE OF EMERGENCY:
- |   |                |
|---|----------------|
| CABLEVISION                               | 263-2061       |
| KG&E (GAS & ELECTRIC)                     | 363-8600       |
| SOUTHWESTERN BELL TELEPHONE COMPANY       | 1-800-734-7590 |
| CITY OF WICHITA WATER & SEWER MAINTENANCE | 289-4908       |
| WILLIAMS NATURAL GAS                      | 524-0491       |
- OR 1-800-324-9696 (AFTER 4 p.m.)
8. RUBBLE FROM THE REMOVAL OF MISCELLANEOUS STRUCTURES AND EXCESS EXCAVATION WHICH IS TO BE WASTED SHALL BE DISPOSED OF ON SITES TO BE PROVIDED BY THE CONTRACTOR. THESE SITES SHALL BE APPROVED BY THE ENGINEER AS TO SUITABILITY, APPEARANCE AND SITE LOCATION. LOCATIONS THAT, IN THE OPINION OF THE ENGINEER, WILL LEAVE AN UNSIGHTLY APPEARANCE WILL NOT BE APPROVED. ALL DISPOSAL SITES MUST BE APPROVED BY THE KANSAS DEPARTMENT OF HEALTH AND ENVIRONMENT. MATERIAL EITHER STOCKPILED OR DISPOSED OF IN A FLOOD PLAIN WOULD REQUIRE A KANSAS STATE BOARD OF AGRICULTURE PERMIT. ANY MATERIAL DUMPED IN WATERS OF THE UNITED STATES OR WETLANDS IS SUBJECT TO U.S. CORPS OF ENGINEERS PERMITTING REGULATIONS. ANY MATERIAL BURIED OR STOCKPILED BEYOND APPROVED CONSTRUCTION LIMITS WOULD REQUIRE ADDITIONAL ARCHAEOLOGICAL INVESTIGATIONS UNLESS BURIED IN A PREVIOUSLY APPROVED BORROW LOCATION.
  9. CONTRACTOR SHALL RESEED AND MULCH ALL DISTURBED AREAS. COST SHALL BE CONSIDERED SUBSIDIARY TO SITE RESTORATION.



WICHITA AIRPORT  
 AUTHORITY



SCALE: 1" = 100'  
 LEGEND



*BOOKED  
 9-20-96  
 MEG  
 D-316*

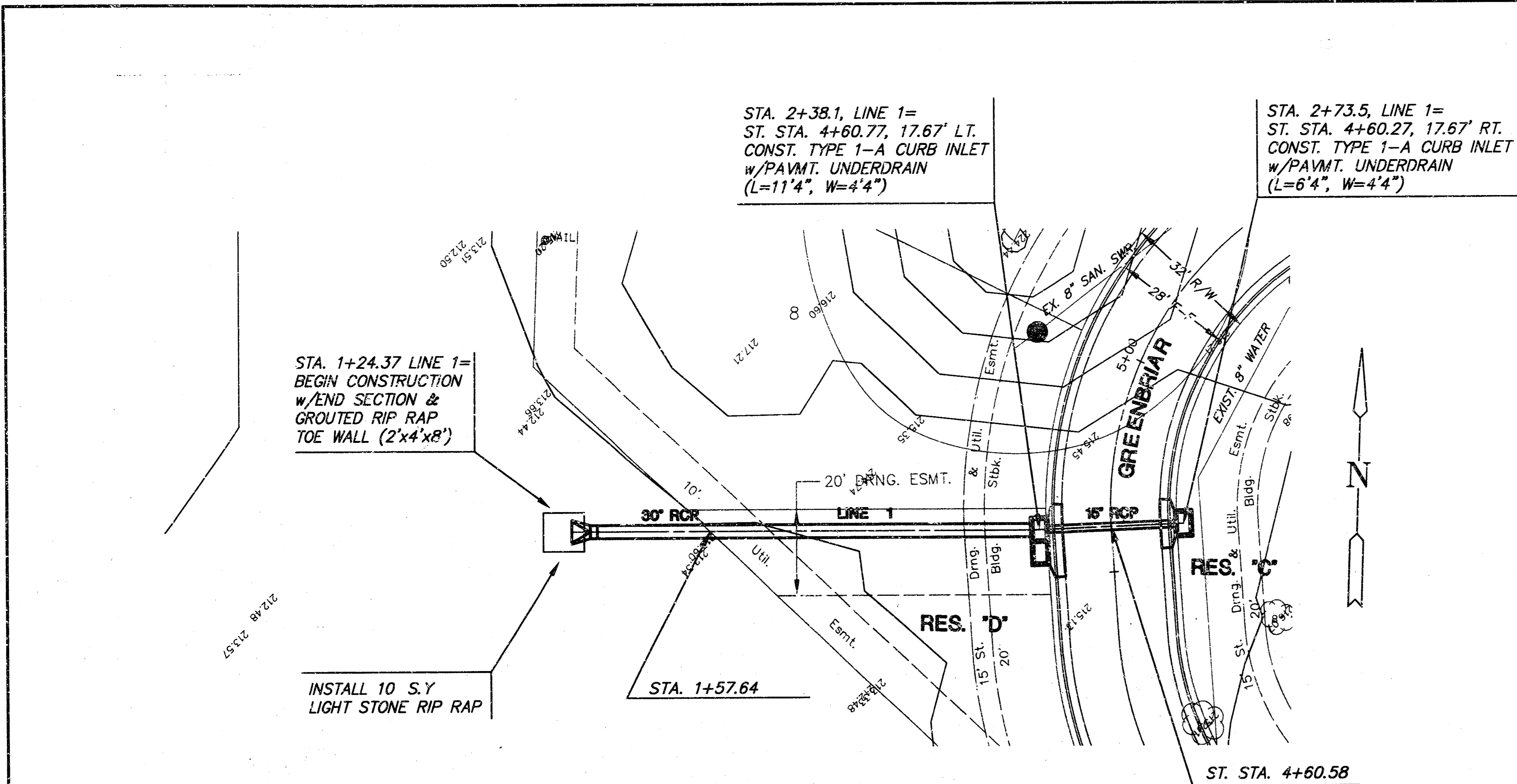
**INDEX TO DRAWINGS**

SHEET NO.	DESCRIPTION
1	TITLE SHEET
2	LINE 1
3-4	INLET DETAILS
5	FINAL PLAT

**BENCHMARKS**

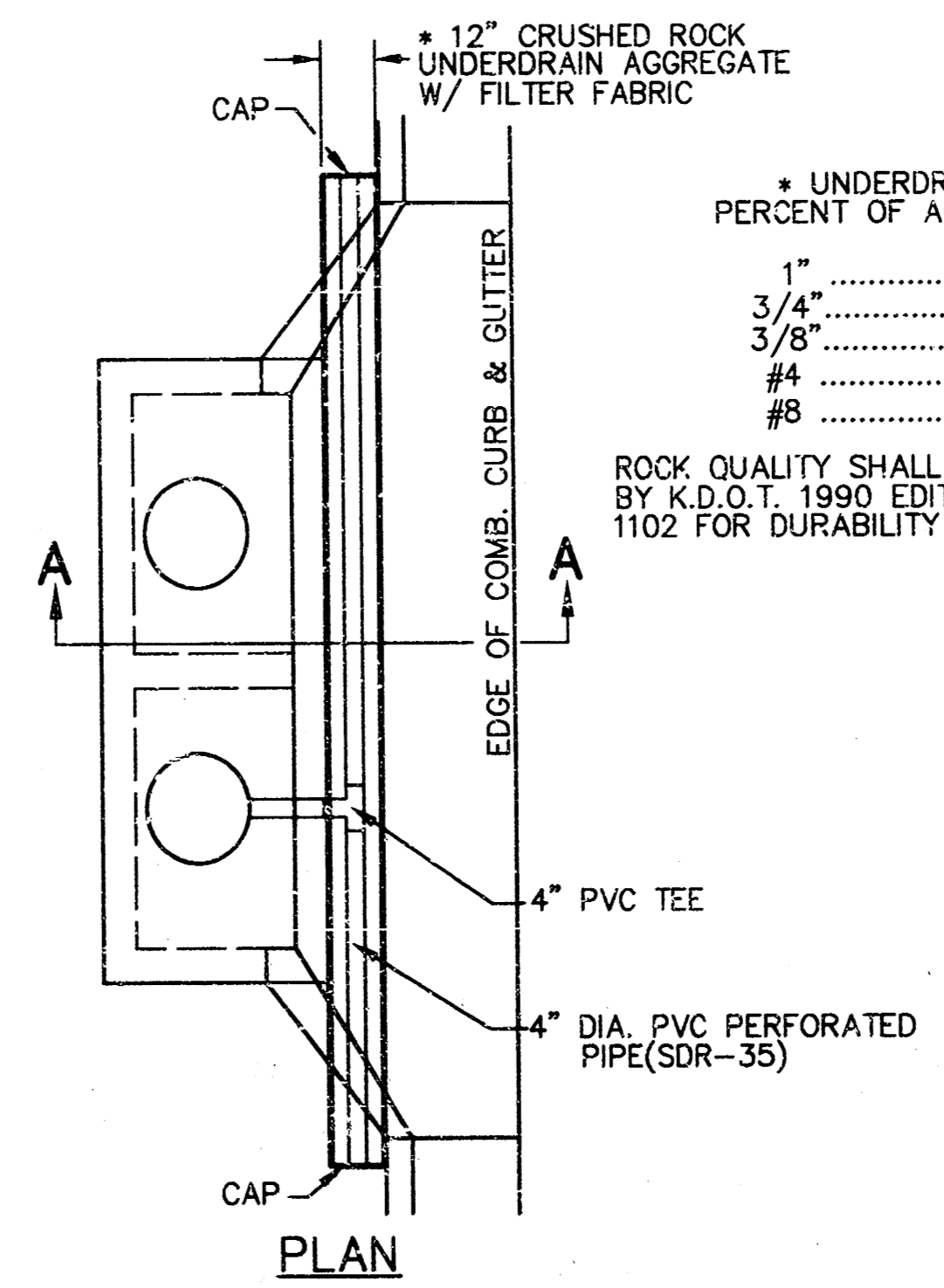
- BM #1 "□" CUT AT S.E. COR. R&BC UNDER WEBB RD. NEAR N.E. COR. FOX POINTE. ELEV. = 219.65
- BM #2 "□" CUT AT S.W. COR. R&BC UNDER WEBB RD. NEAR N.E. COR. FOX POINTE. ELEV. = 218.92
- BM #3 R.R. SPIKE IN P.P. 54' N. OF MAIN ENTRANCE TO FOX POINTE. ELEV. = 223.55
- BM #4 BURIED "T" POST 10' N. OF N.E. COR. OF LOT 7, FOX POINTE. ELEV. = 214.79
- BM #5 BURIED "T" POST 10' N. OF N.E. COR. OF LOT 7, FOX POINTE. ELEV. = 219.65

	<b>FOX POINTE SECOND ADDITION</b>		
	PROJECT NAME		
<b>MID-KANSAS ENGINEERING CONSULTANTS, INC.</b> 411 N WEBB ROAD WICHITA, KS. 67206 316-684-9600	<b>STORM WATER SEWER PLANS</b>		
	SHEET TITLE		
DESIGN BY: <u>GJA</u>	DRAWN BY: <u>KKL</u>	CHECKED BY: <u>GJA</u>	
DATE: <u>MAY 1996</u>	JOB NO.: <u>95113_DT</u>	SHEET/OF: <u>1 / 5</u>	



**PLAN LINE 1**

SCALE: 1"=40'

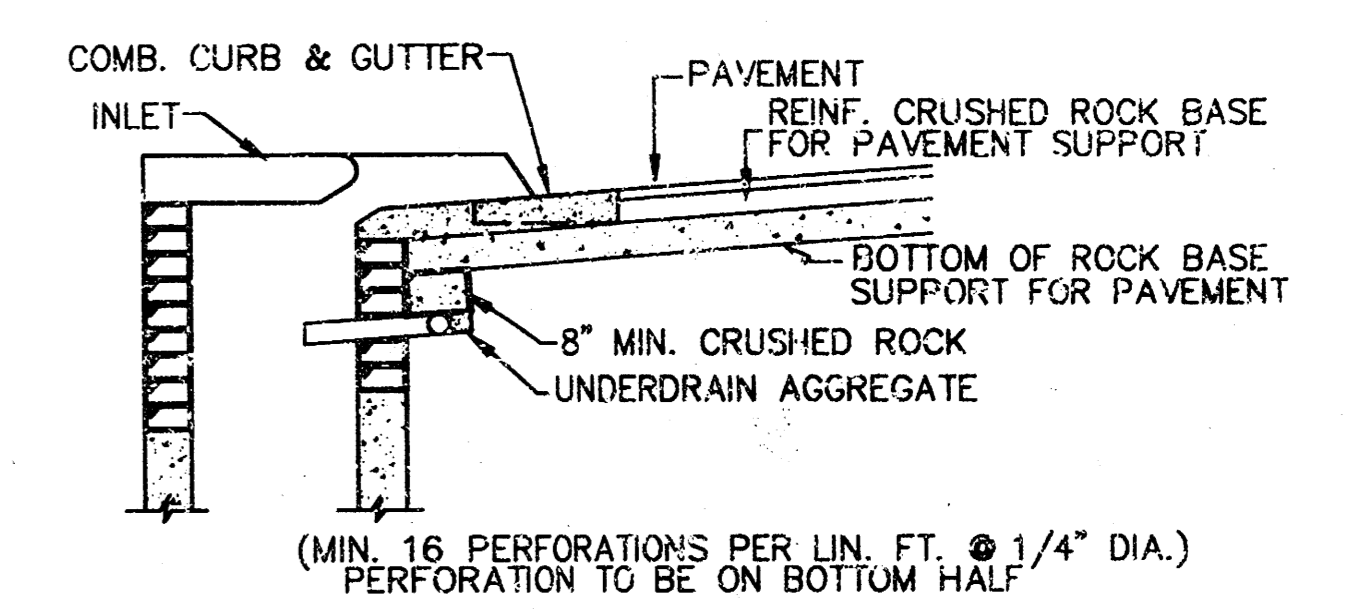


\* UNDERDRAIN AGGREGATE PERCENT OF AGGREGATE RETAINED

1"	0
3/4"	0 to 10
3/8"	45 to 80
#4	90 to 100
#8	95 to 100

NOTE: PLACE 4" PVC PERFORATED PIPE AT ALL DRAINAGE SUMP LOCATIONS.  
INLET TYPE MAY VARY FROM THAT SHOWN.

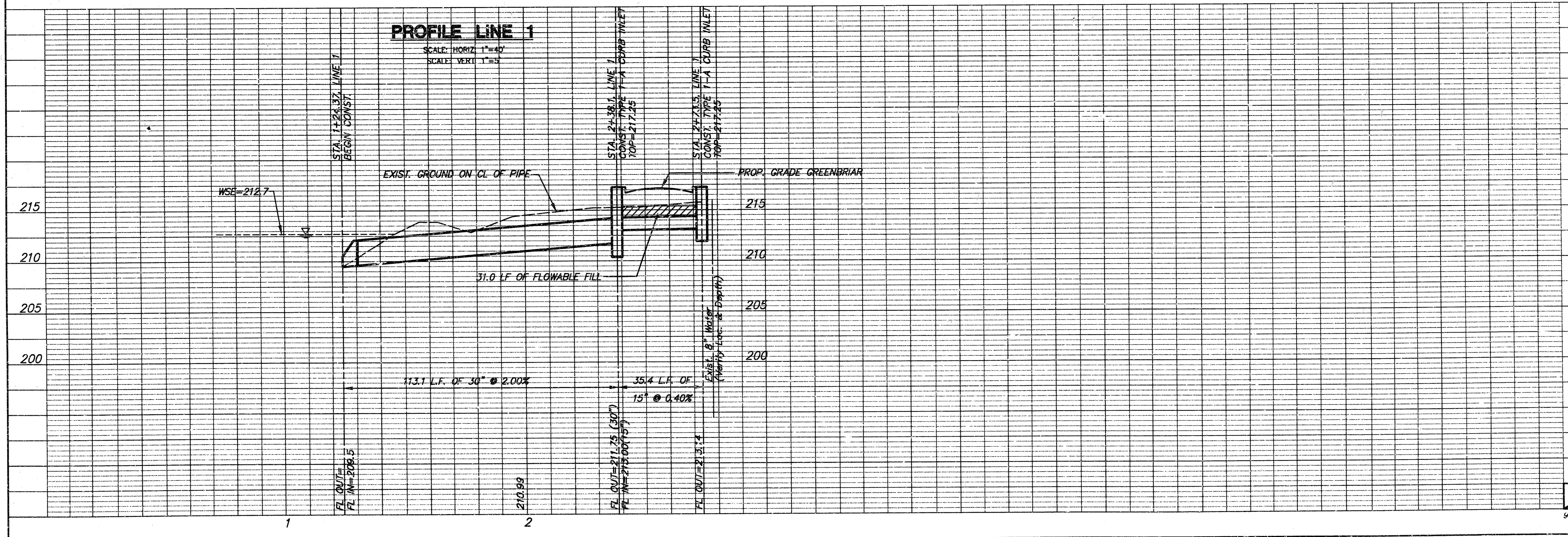
ROCK QUALITY SHALL CONFORM TO THE REQUIREMENTS SPECIFIED BY K.D.O.T. 1990 EDITION STANDARD SPECIFICATION SUBSECTION 1102 FOR DURABILITY CLASS 1.

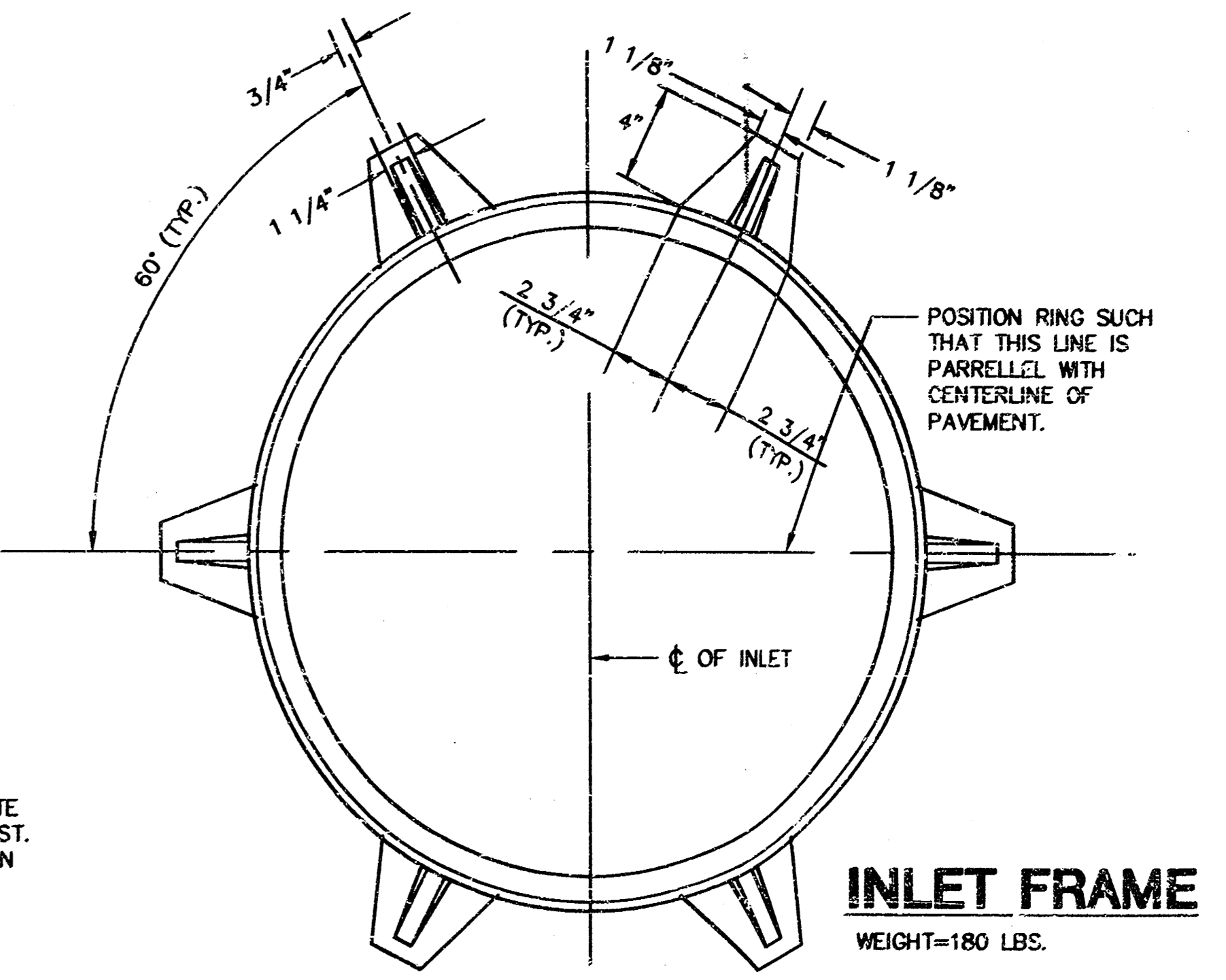
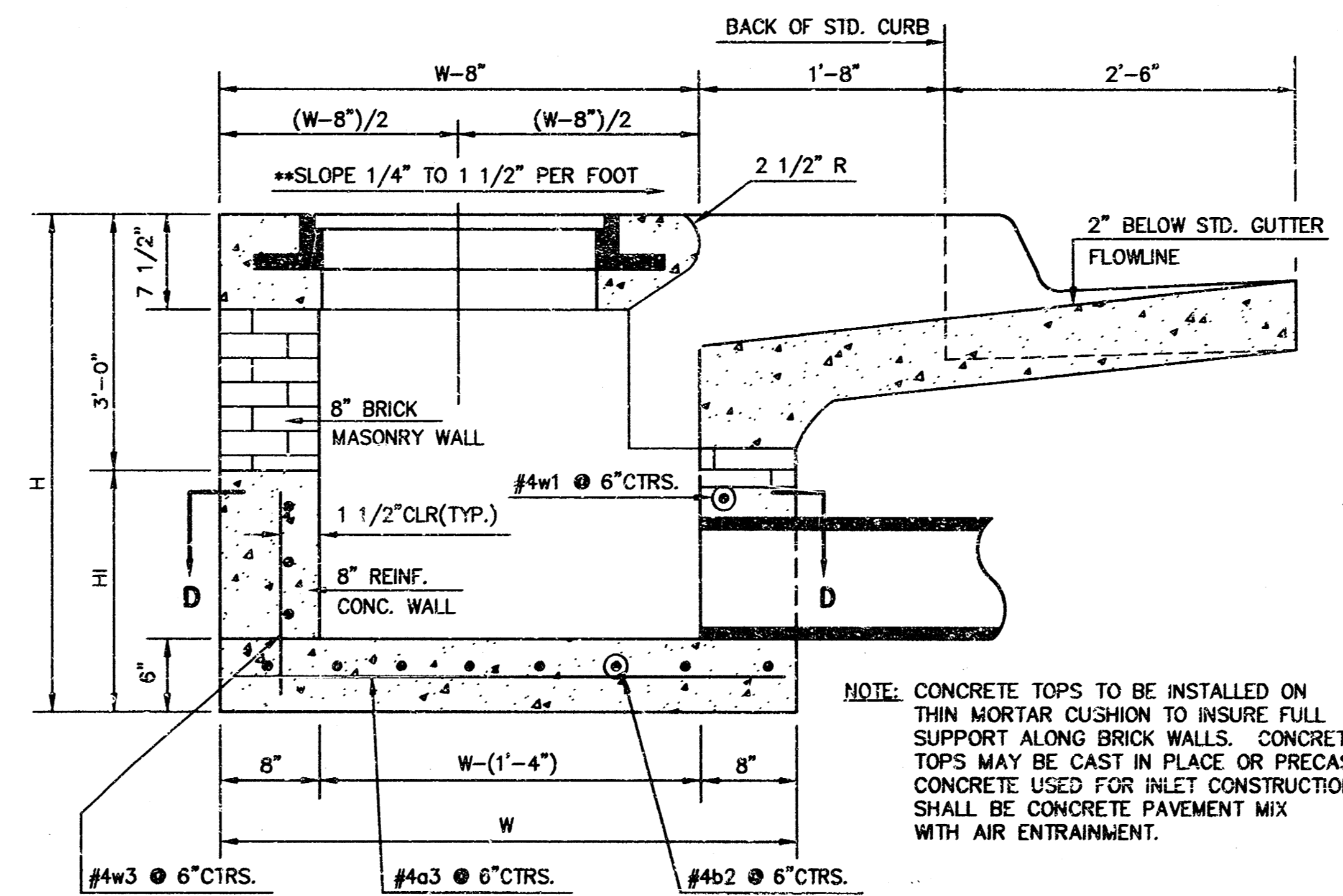
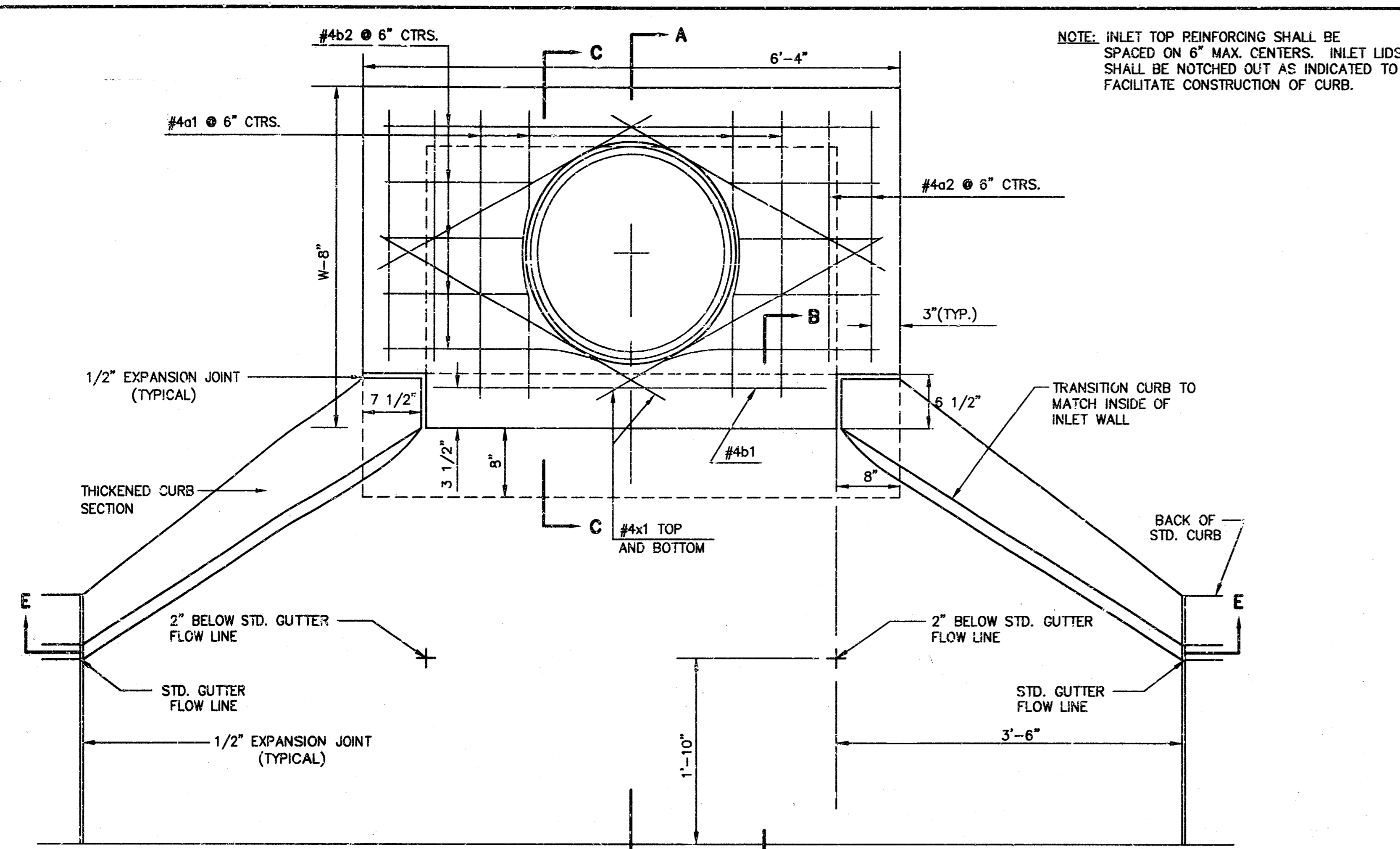


**SECTION A-A**

**PAVEMENT UNDERDRAIN DETAIL**

SCALE: NONE





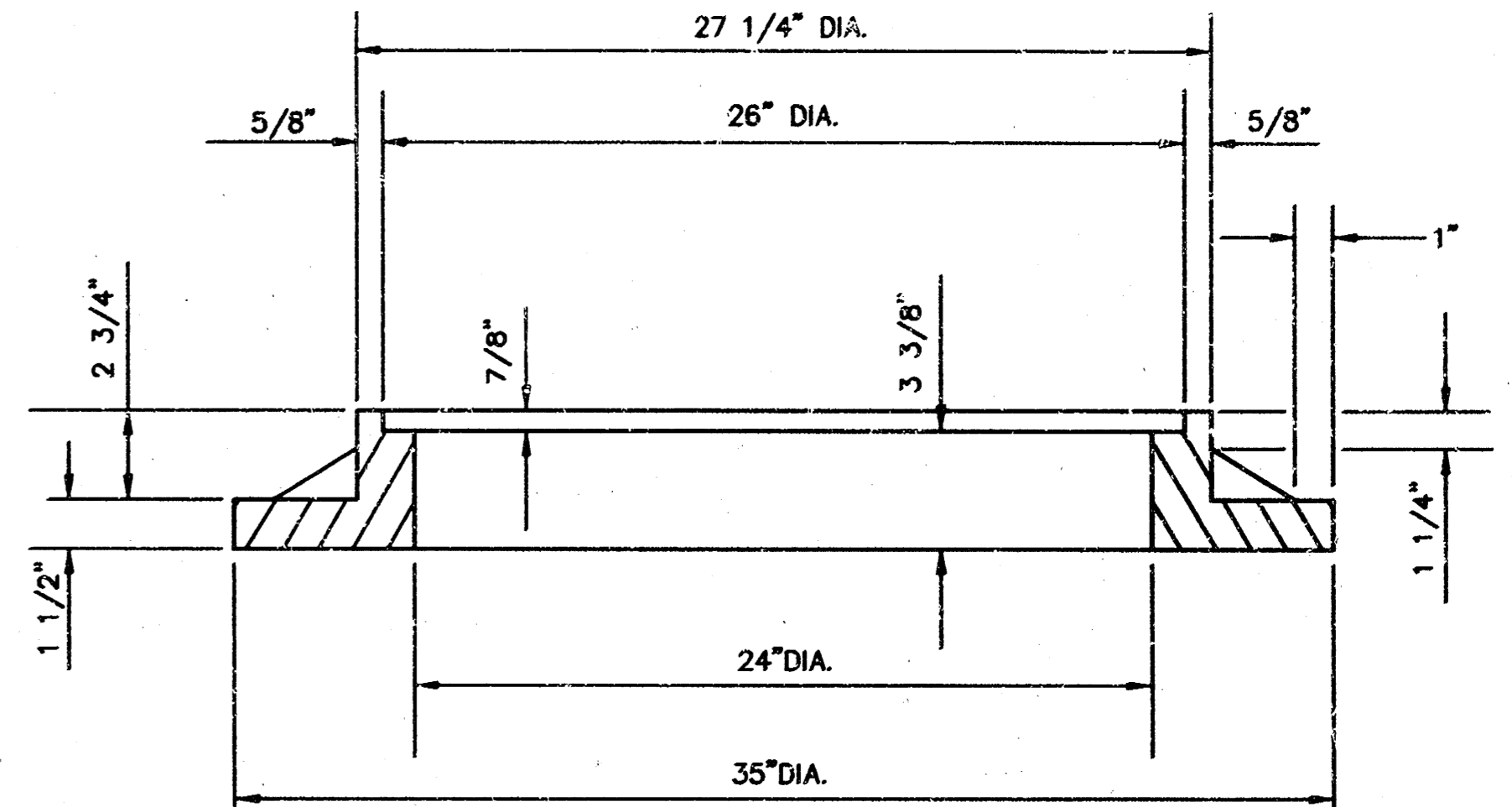
**SECTION A-A**

NOTE: CONTRACTOR SHALL HAVE THE OPTION OF CONSTRUCTING 8" BRICK MASONRY WALLS BETWEEN THE CONCRETE INLET BASE AND TOP ON THIS INLET WHEN W=6'-4" AND H=7'-0" OR LESS.

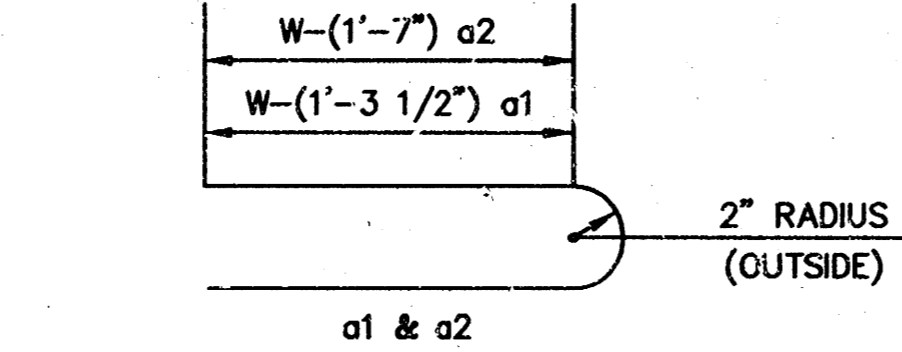
ADDITIONAL CURB AND GUTTER CONSTRUCTION NECESSARY TO CONNECT SET-BACK IN .T TO PAVEMENT WILL BE PAID FOR AT THE UNIT PRICE BID FOR EACH INLET HOOKUP.

INLET INVERT SHALL BE SHAPED WITH 8 SACK SAND MIX CONCRETE TO CREATE FLOW CHANNELS AND TO INCREASE HYDRAULIC EFFICIENCY SUCH THAT THE INLET WILL BE SELF CLEANING BETWEEN ALL INLET AND/OR OUTLET PIPES.

THE ENDS OF ALL PIPES INSTALLED IN INLETS SHALL BE CUT OFF FLUSH WITH THE INSIDE FACE OF THE INLET WALL.



**PLAN**



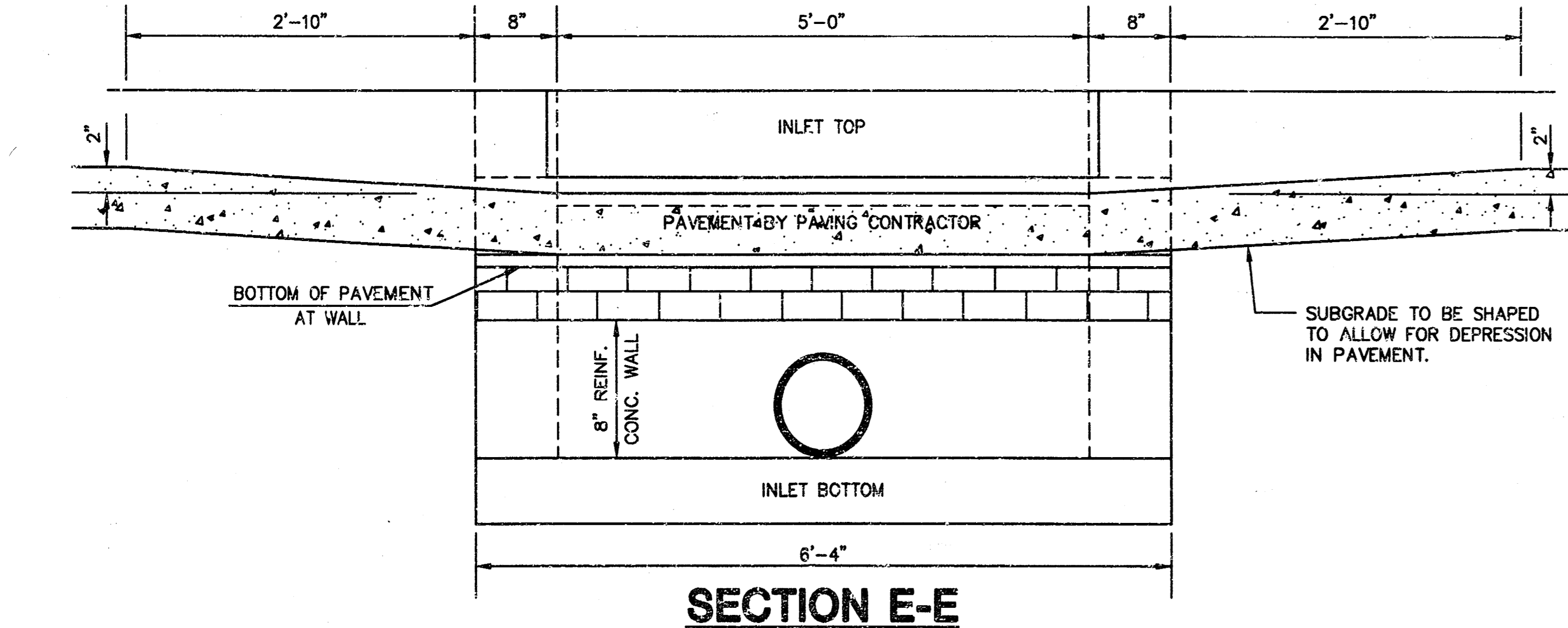
**BENDING DIAGRAM**

PRECAST SLAB AND FLOOR REINFORCING											
		W=4'-4"		W=5'-4"		W=6'-4"		W=7'-4"		W=8'-4"	
MARK	SIZE	NO.	LENGTH	NO.	LENGTH	NO.	LENGTH	NO.	LENGTH	NO.	LENGTH
a1	#4	6	6'-7"	6	8'-7"	6	10'-7"	6	12'-7"	6	14'-7"
a2	#4	4	6'-0"	4	8'-0"	4	10'-0"	4	12'-0"	4	14'-0"
a3	#4	13	4'-1"	13	5'-1"	13	6'-1"	13	7'-1"	13	8'-1"
b1	#4	1	4'-9"	1	4'-9"	1	4'-9"	1	4'-9"	1	4'-9"
b2	#4	23	6'-1"	29	6'-1"	35	6'-1"	41	6'-1"	47	6'-1"
x1	#4	8	3'-10"	8	4'-2"	8	4'-6"	8	4'-10"	8	5'-2"

WALL REINFORCING											
		W=4'-4"		W=5'-4"		W=6'-4"		W=7'-4"		W=8'-4"	
MARK	SIZE	NO.	LENGTH	NO.	LENGTH	NO.	LENGTH	NO.	LENGTH	NO.	LENGTH
w1	#4	①	6'-1"	①	6'-1"	①	6'-1"	①	6'-1"	①	6'-1"
w2	#4	①	4'-1"	①	5'-1"	①	6'-1"	①	7'-1"	①	8'-1"
w3	#4	32	②	36	②	40	②	44	②	48	②

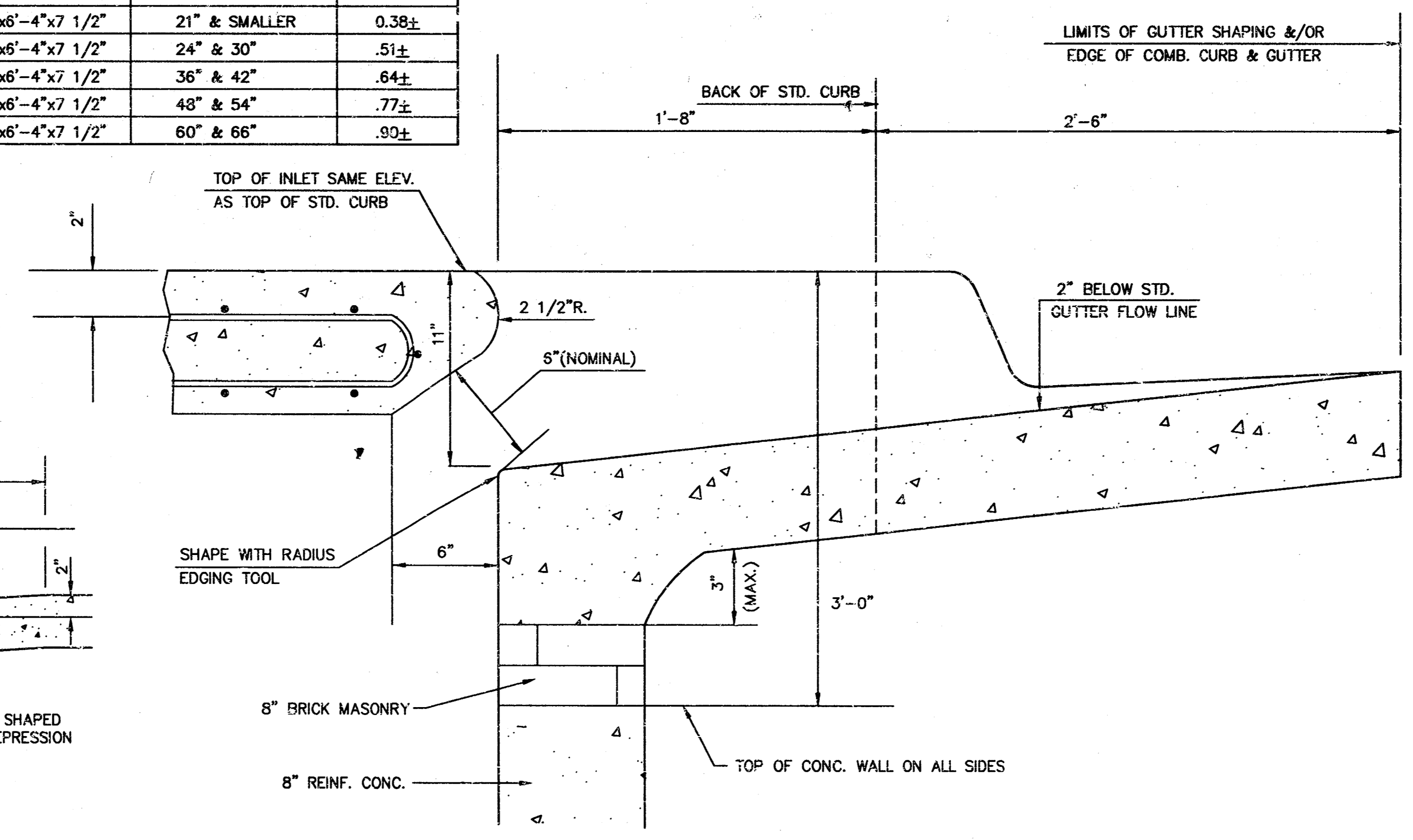
\* FIELD BEND OR CUT REINFORCING AS REQUIRED FOR CLEARANCE  
 ① 4(HI-12"); (HI-12") ROUND DOWN TO NEAREST 0.5"  
 ② HI-3"



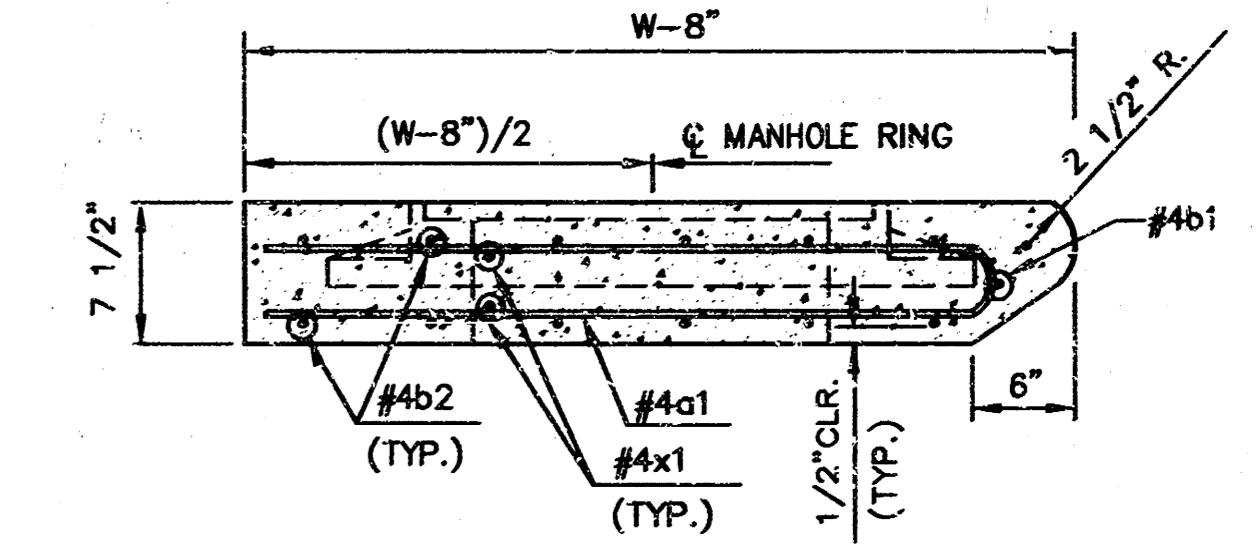
**SECTION E-E**

STANDARD CURB INLET PRECAST TOPS			
W	PRE-CAST TOP SIZE	PIPE SIZE	CU. YD. CONC.
4'-4"	3'-8"x6'-4"x7 1/2"	21" & SMALLER	0.38±
5'-4"	4'-8"x6'-4"x7 1/2"	24" & 30"	.51±
6'-4"	5'-8"x6'-4"x7 1/2"	36" & 42"	.64±
7'-4"	6'-8"x6'-4"x7 1/2"	48" & 54"	.77±
8'-4"	7'-8"x6'-4"x7 1/2"	60" & 66"	.90±

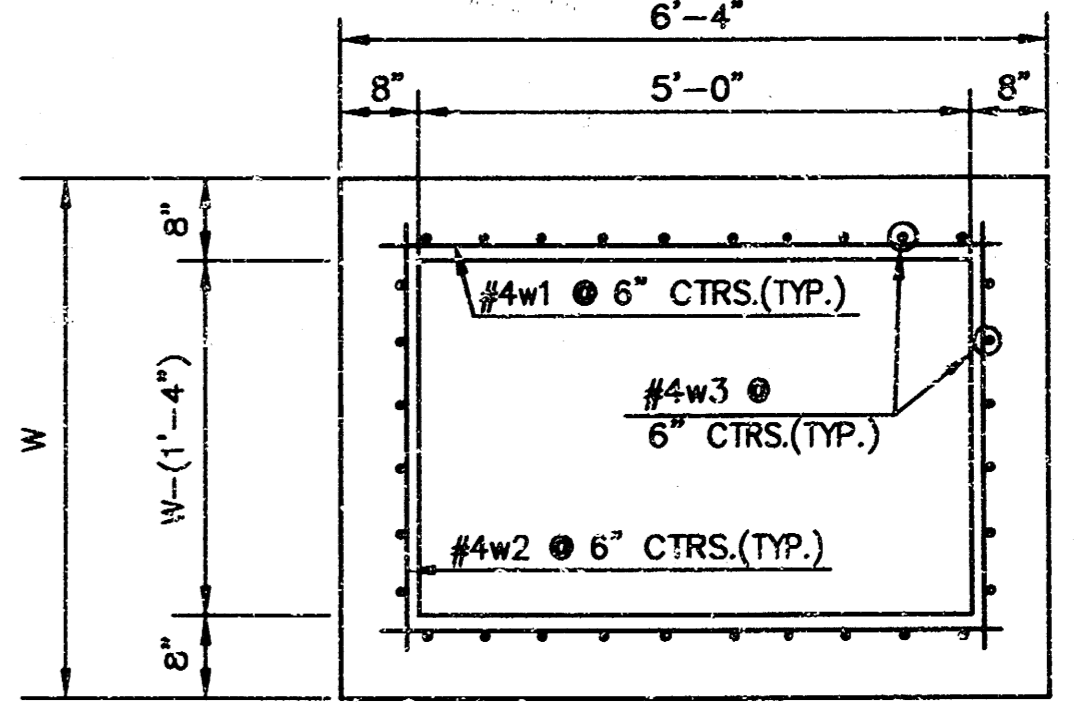
\*\*NOTE: SLOPE OF INLET TOPS TO MATCH SIDEWALK OR PARKING SLOPES WITHIN LIMITS INDICATED.



**SECTION B-B**



**SECTION C-C**



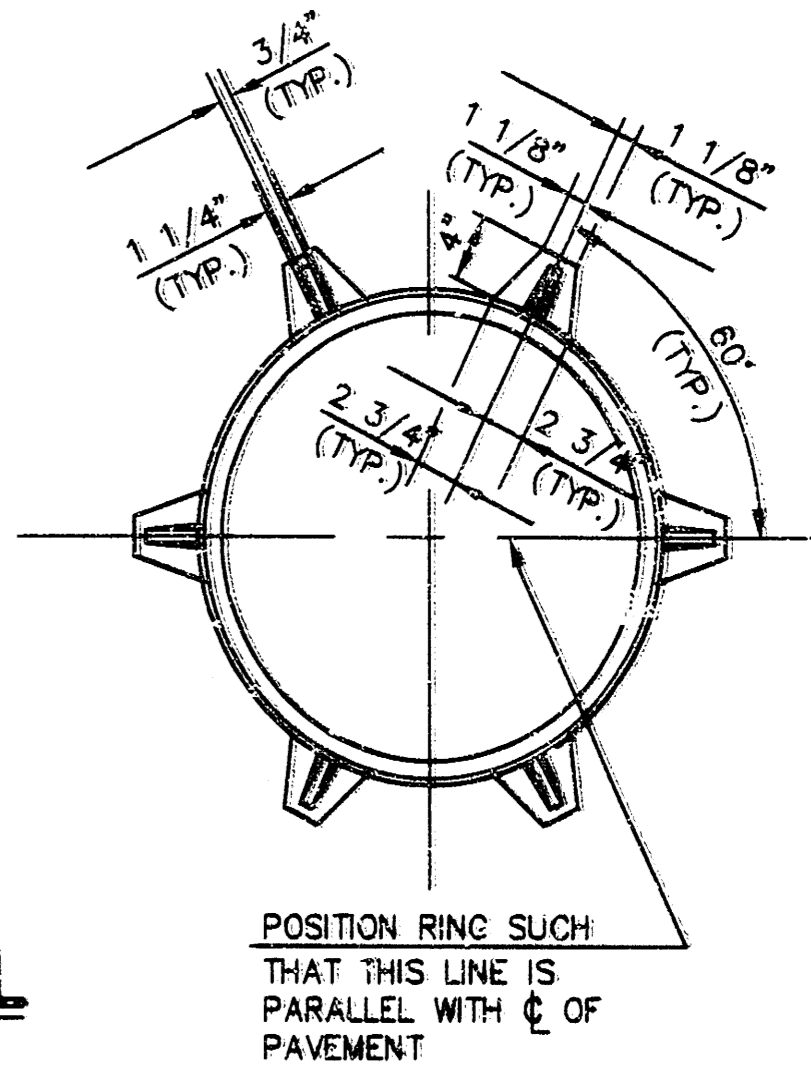
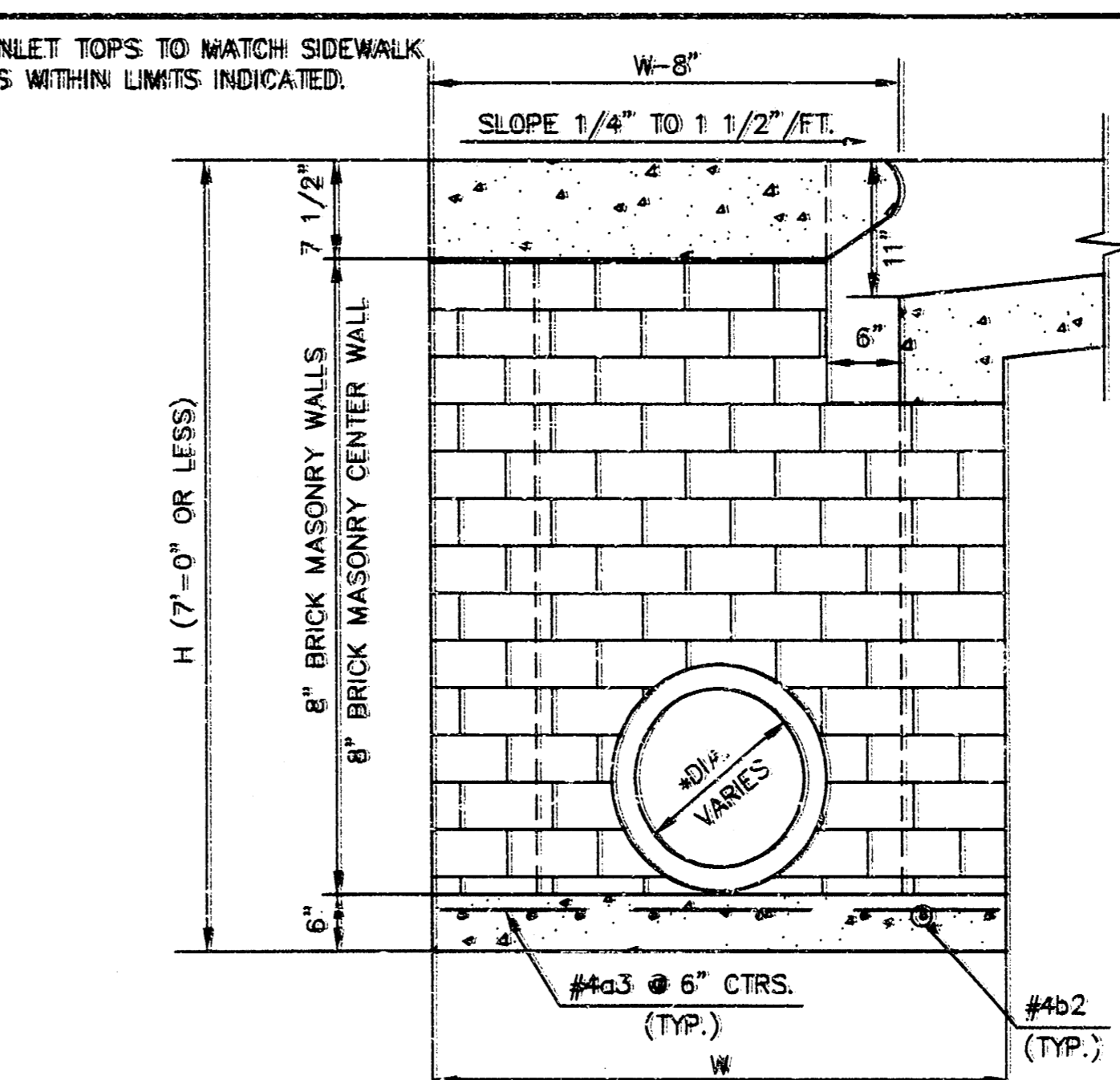
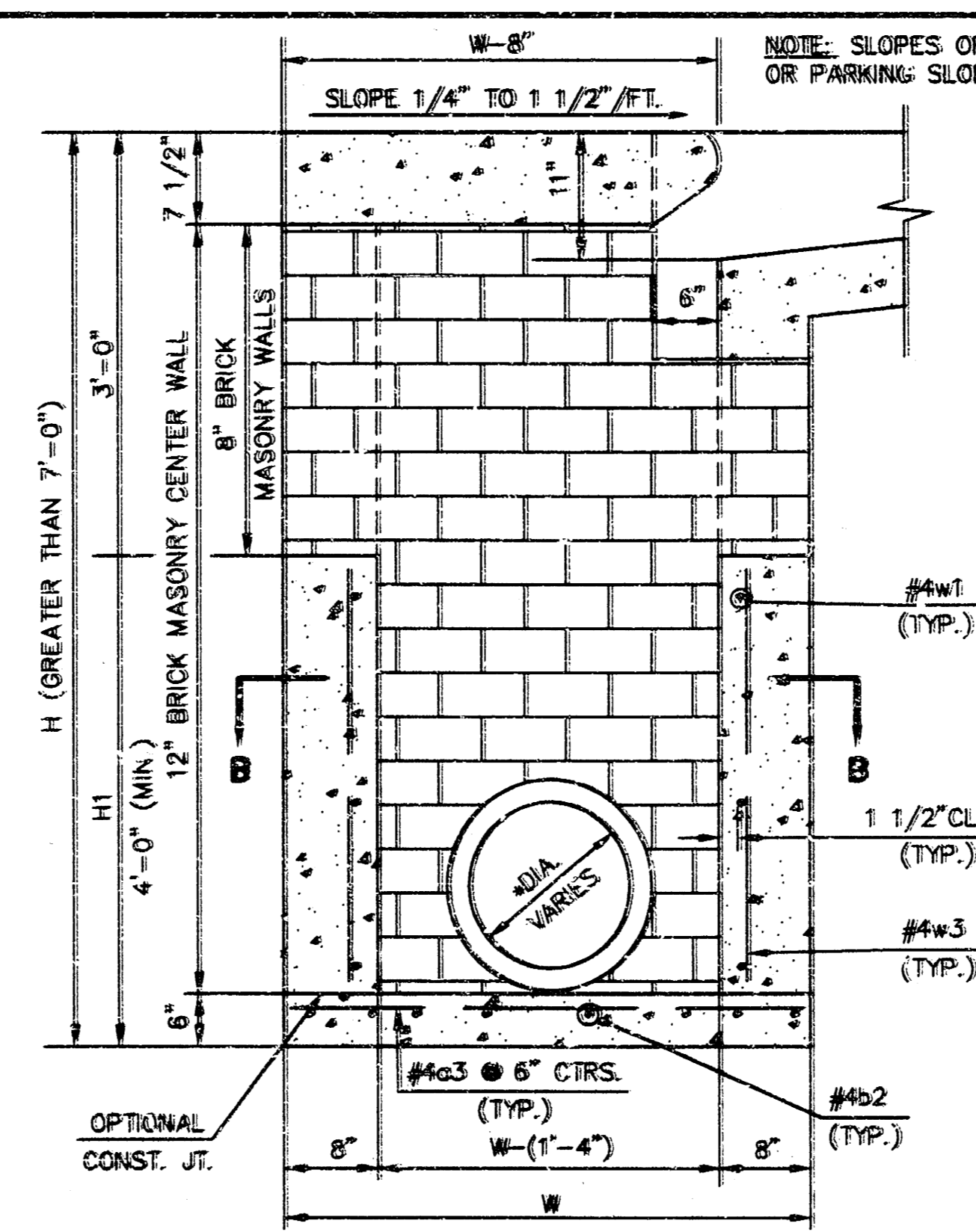
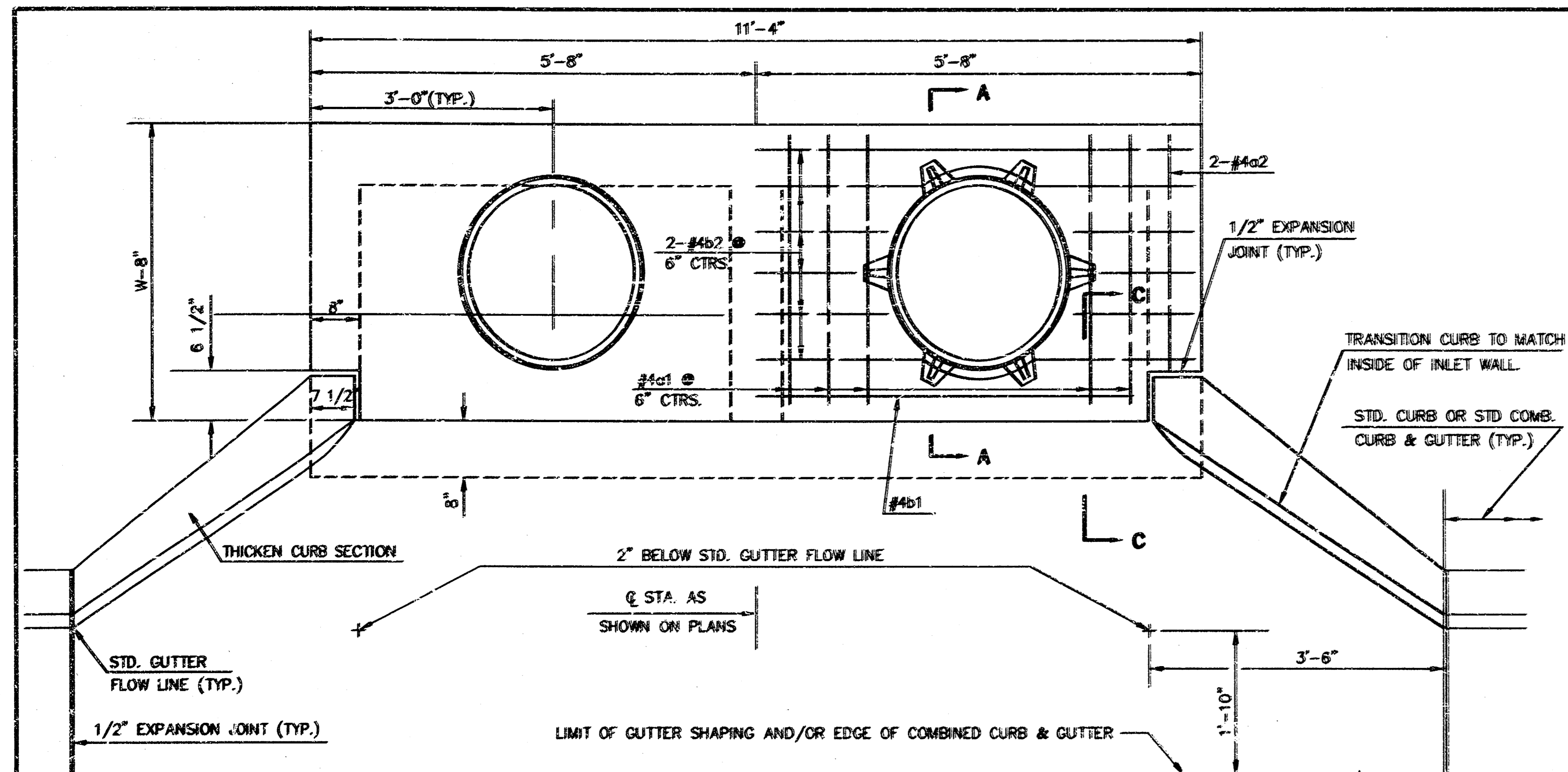
**SECTION D-D**

REVISED: 2-18-89 C.O.W.

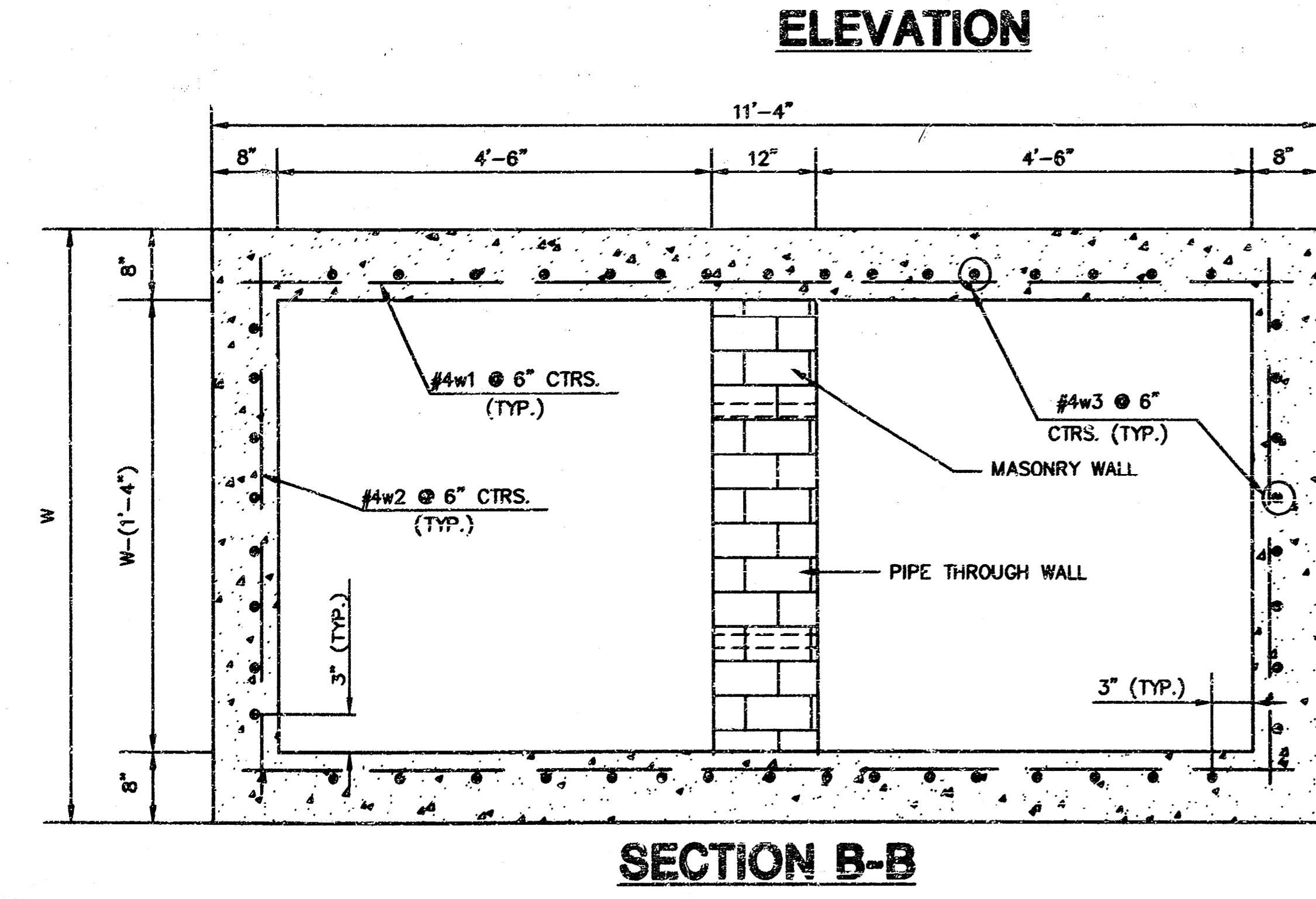
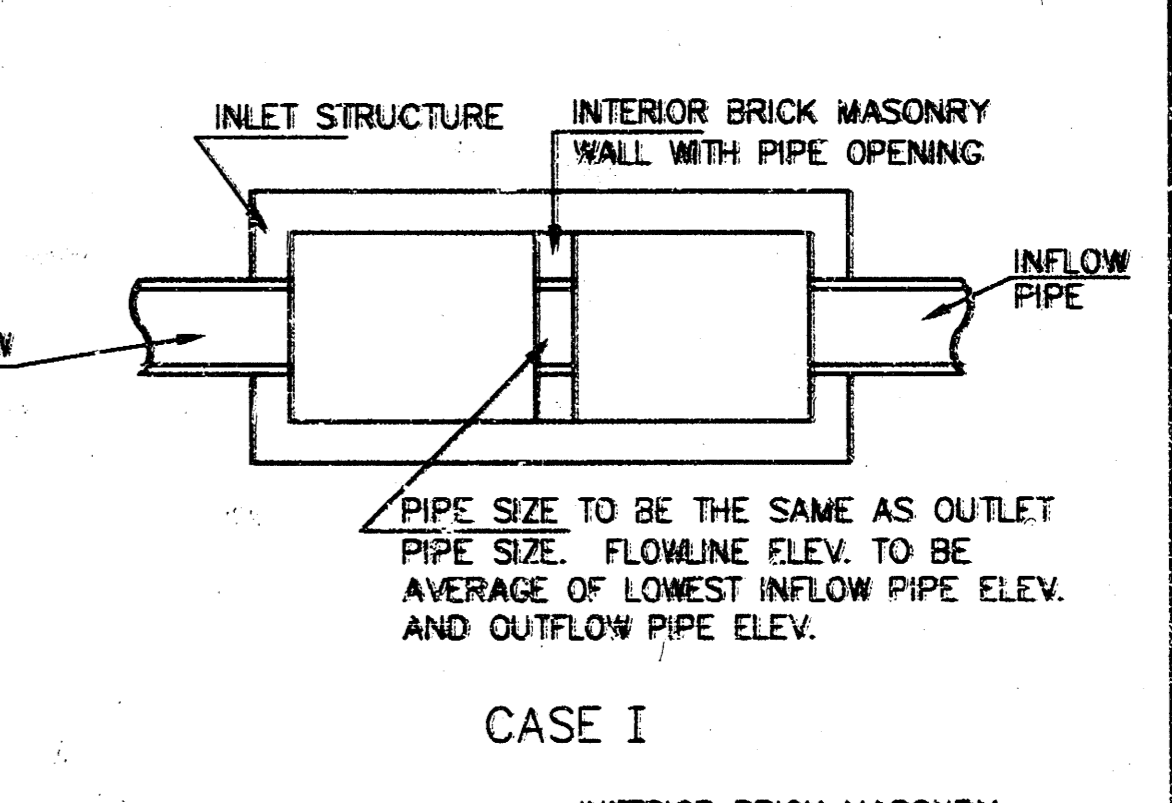
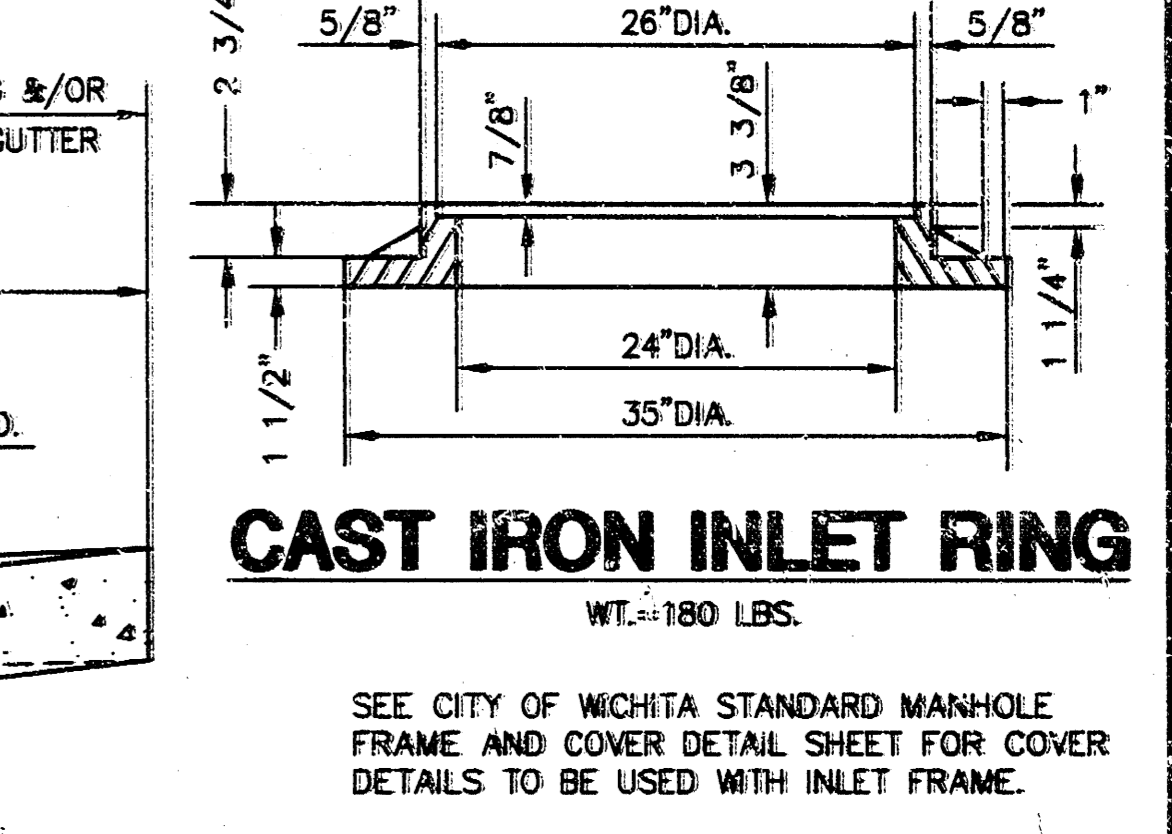
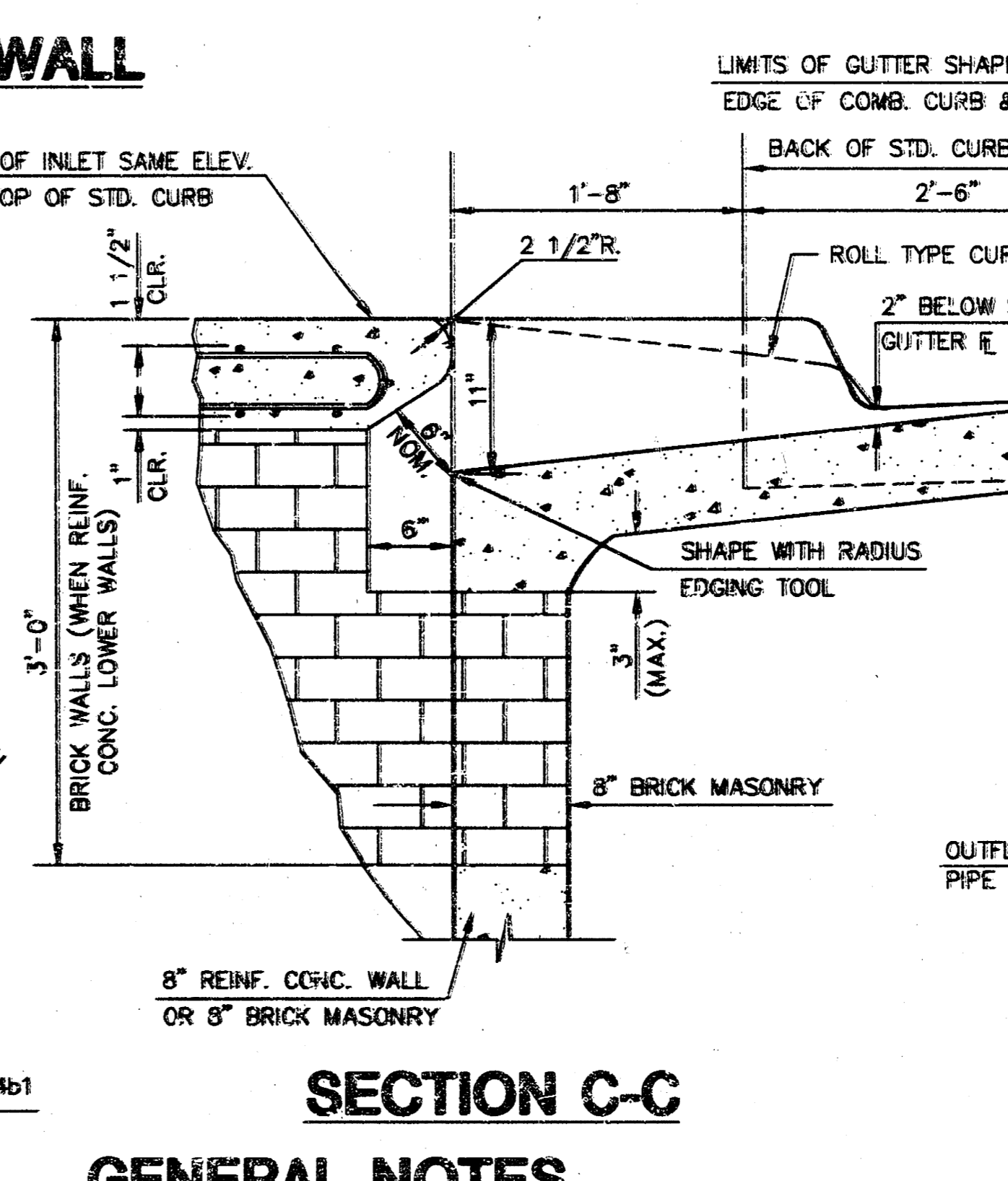
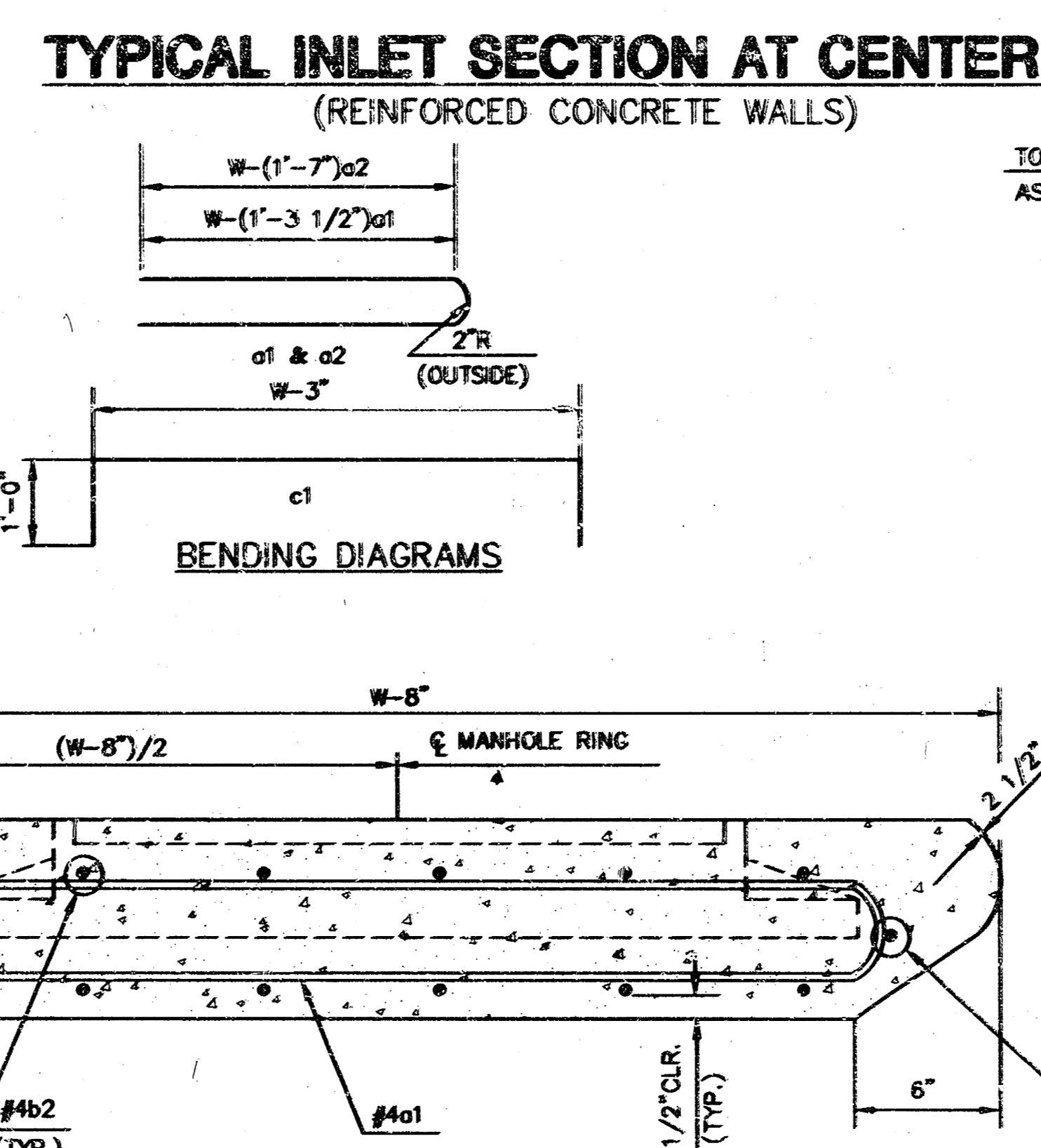
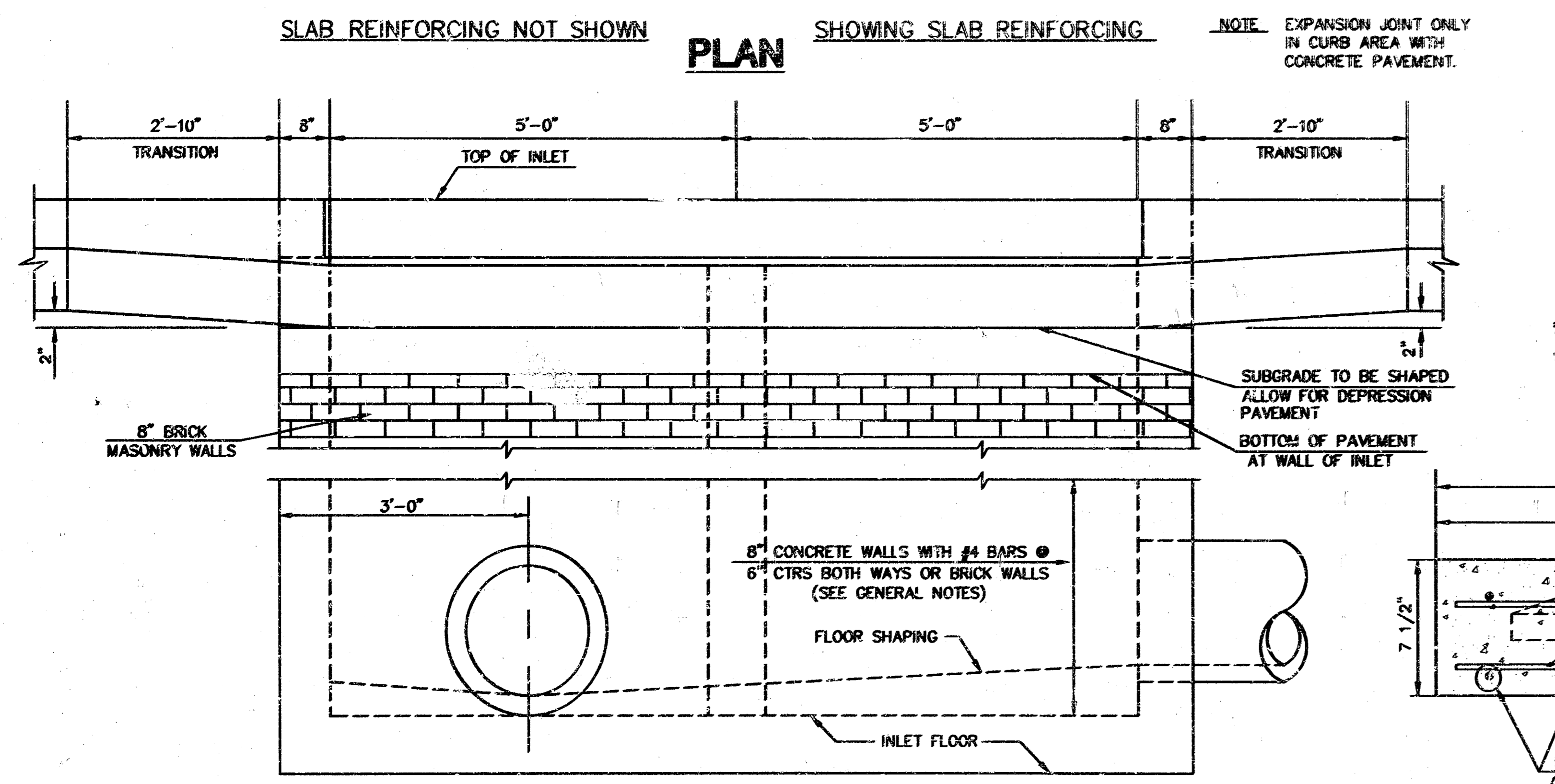
**STANDARD TYPE 1A CURB INLET**  
 INLET OPENING=6"x5'-0"

JUNE 1984  
 CITY OF WICHITA, KANSAS

Design C.O.W.	Checked by	Checked by
Drawn by	Date	Date MAY 1996 Job No. 95113001



**TYPICAL INLET SECTION AT CENTER WALL (MASONRY WALLS)**  
 A CENTER WALL OPENING SHALL BE PROVIDED BY MEANS OF A SECTION OF REINFORCED CONCRETE PIPE. SEE CASE I AND CASE II BELOW.



**SLAB AND FLOOR REINFORCING**

MARK	SIZE	W=4'-4"		W=5'-4"		W=6'-4"		W=7'-4"		W=8'-4"	
		NO.	LENGTH	NO.	LENGTH	NO.	LENGTH	NO.	LENGTH	NO.	LENGTH
a1	#4	13	6'-7 1/4"	13	8'-7 1/4"	13	10'-7 1/4"	13	12'-7 1/4"	13	14'-7 1/4"
a2	#4	2	6'-0"	2	8'-0"	2	10'-0"	2	12'-0"	2	14'-0"
a3	#4	20	4'-1"	20	5'-1"	20	6'-1"	20	7'-1"	20	8'-1"
b1	#4	1	9'-8"	1	9'-8"	1	9'-8"	1	9'-8"	1	9'-8"
#b2	#4	18	11'-1"	24	11'-1"	30	11'-1"	36	11'-1"	42	11'-1"

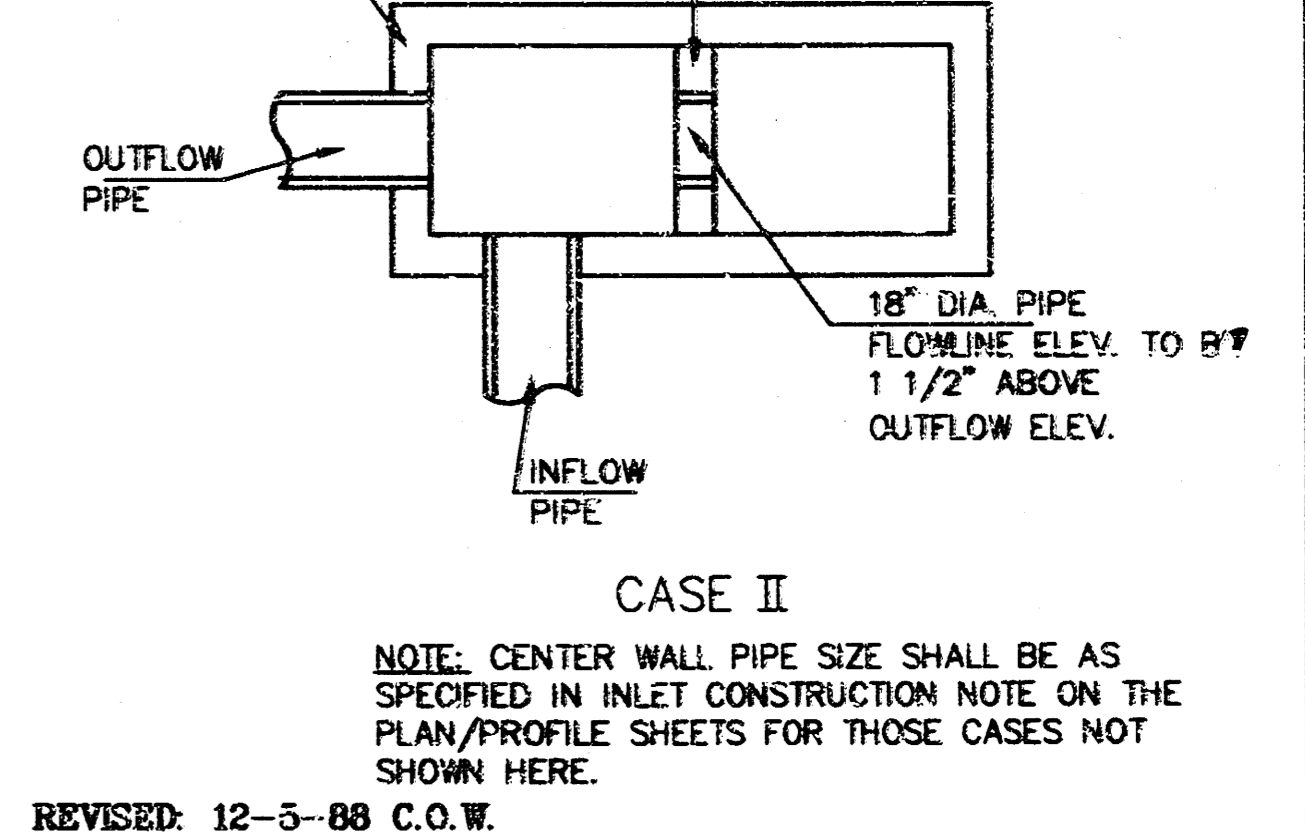
**WALL REINFORCING**

MARK	SIZE	W=4'-4"		W=5'-4"		W=6'-4"		W=7'-4"		W=8'-4"	
		NO.	LENGTH	NO.	LENGTH	NO.	LENGTH	NO.	LENGTH	NO.	LENGTH
c1	#6	4	6'-1"	4	7'-1"	4	8'-1"	4	9'-1"	4	10'-1"
w1	#4	①	11'-1"	①	11'-1"	①	11'-1"	①	11'-1"	①	11'-1"
w2	#4	①	4'-1"	①	5'-1"	①	6'-1"	①	7'-1"	①	8'-1"
w3	#4	②	③	②	③	②	③	②	③	②	③

- GENERAL NOTES**
- THE CONTRACTOR SHALL BE REQUIRED TO CONSTRUCT 8" BRICK MASONRY WALLS BETWEEN THE CONCRETE INLET BASE AND TOP ON THIS INLET WHEN W=6'-4" OR LESS AND H=7'-0" OR LESS. WHEN W IS GREATER THAN 6'-4" AND H IS LESS THAN 7'-0", THE OUTSIDE INLET WALLS BELOW THE BRICK STACK SHALL BE REINFORCED CONCRETE CONSTRUCTION AND THE CENTER WALL SHALL BE OF MASONRY CONSTRUCTION AS SHOWN FOR THE MASONRY WALL OPTION.
  - INLET INVERT SHALL BE SHAPED WITH 8 SACK SAND MIX CONCRETE TO CREATE FLOW CHANNELS AND TO INCREASE HYDRAULIC EFFICIENCY SUCH THAT THE INLET WILL BE SELF CLEANING BETWEEN ALL INLET AND/OR OUTLET PIPES.
  - CONCRETE TOPS TO BE INSTALLED ON THIN MORTAR CUSHION TO INSURE FULL SUPPORT ALONG BRICK WALLS. CONCRETE TOPS MAY BE CAST IN PLACE OR PRECAST. CONCRETE USED FOR INLET CONSTRUCTION SHALL BE CONCRETE PAVEMENT MIX.
  - INLET TOP REINFORCING SHALL BE SPACED ON 6" MAX. CENTERS. INLET LIDS SHALL BE NOTCHED OUT AS INDICATED TO FACILITATE CONSTRUCTION OF CURB. BARS IN INLET TOP TO BE FIELD BENT OR CUT TO CLEAR MANHOLE RING.
  - THE ENDS OF ALL PIPES INSTALLED IN INLETS SHALL BE CUT OFF FLUSH WITH THE INSIDE FACE OF THE INLET WALL.

**STANDARD CURB INLET PRECAST TOPS**

W	PRE-CAST TOP SIZE	SIDE OR INTERIOR WALL PIPE SIZE	CJ. YD. CONC.
4'-4"	3'-8"x11'-4"x7 1/2"	21" & SMALLER	0.83±
5'-4"	4'-8"x11'-4"x7 1/2"	24" & 30"	1.09±
6'-4"	5'-8"x11'-4"x7 1/2"	36" & 42"	1.35±
7'-4"	6'-8"x11'-4"x7 1/2"	48" & 54"	1.61±
8'-4"	7'-8"x11'-4"x7 1/2"	60" & 66"	1.87±

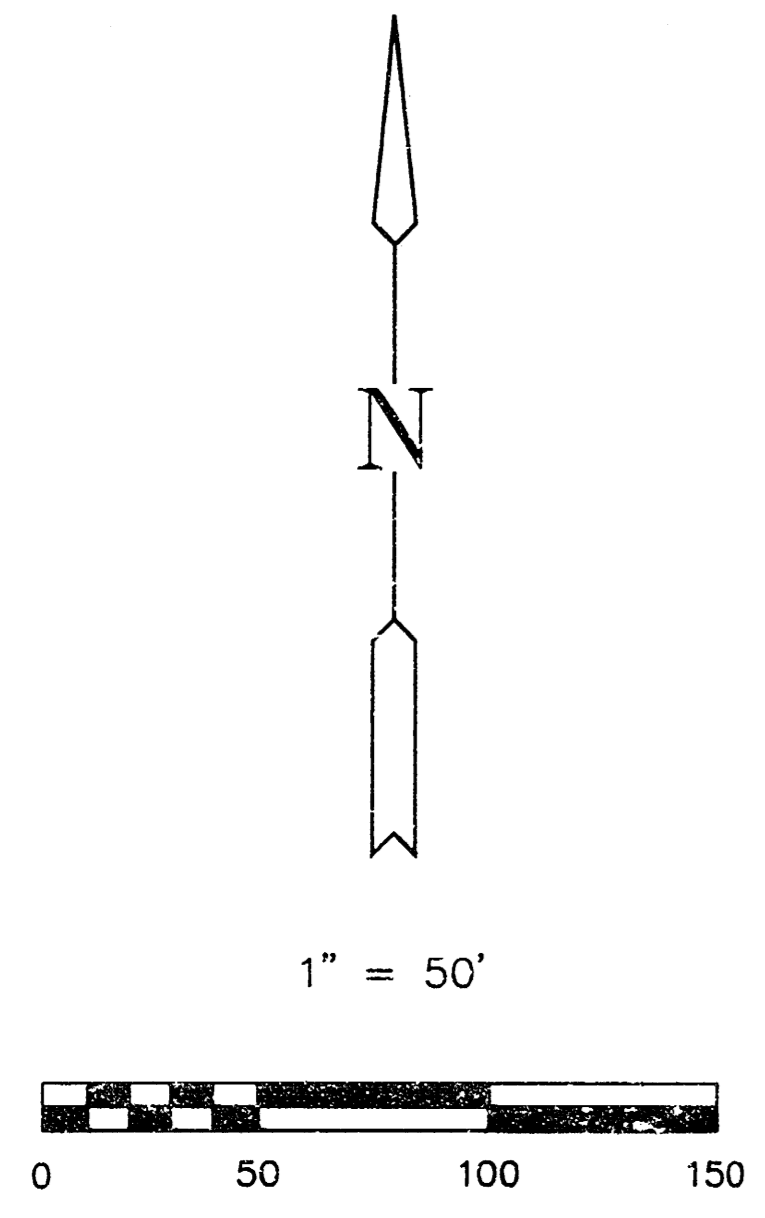


**STANDARD TYPE 1A CURB INLET**  
 INLET OPENING=6"x10'-0"

NOV. 1984  
 CITY OF WICHITA, KANSAS

DESIGN: RBR, ESD, MTD  
 CHECKED BY: [ ]  
 DRAWN BY: [ ]  
 DATE: MAY 1996  
 JOB NO.: 95113002

# FINAL PLAT FOX POINTE SECOND ADDITION AN ADDITION TO WICHITA, SEDGWICK COUNTY, KANSAS



### LEGEND

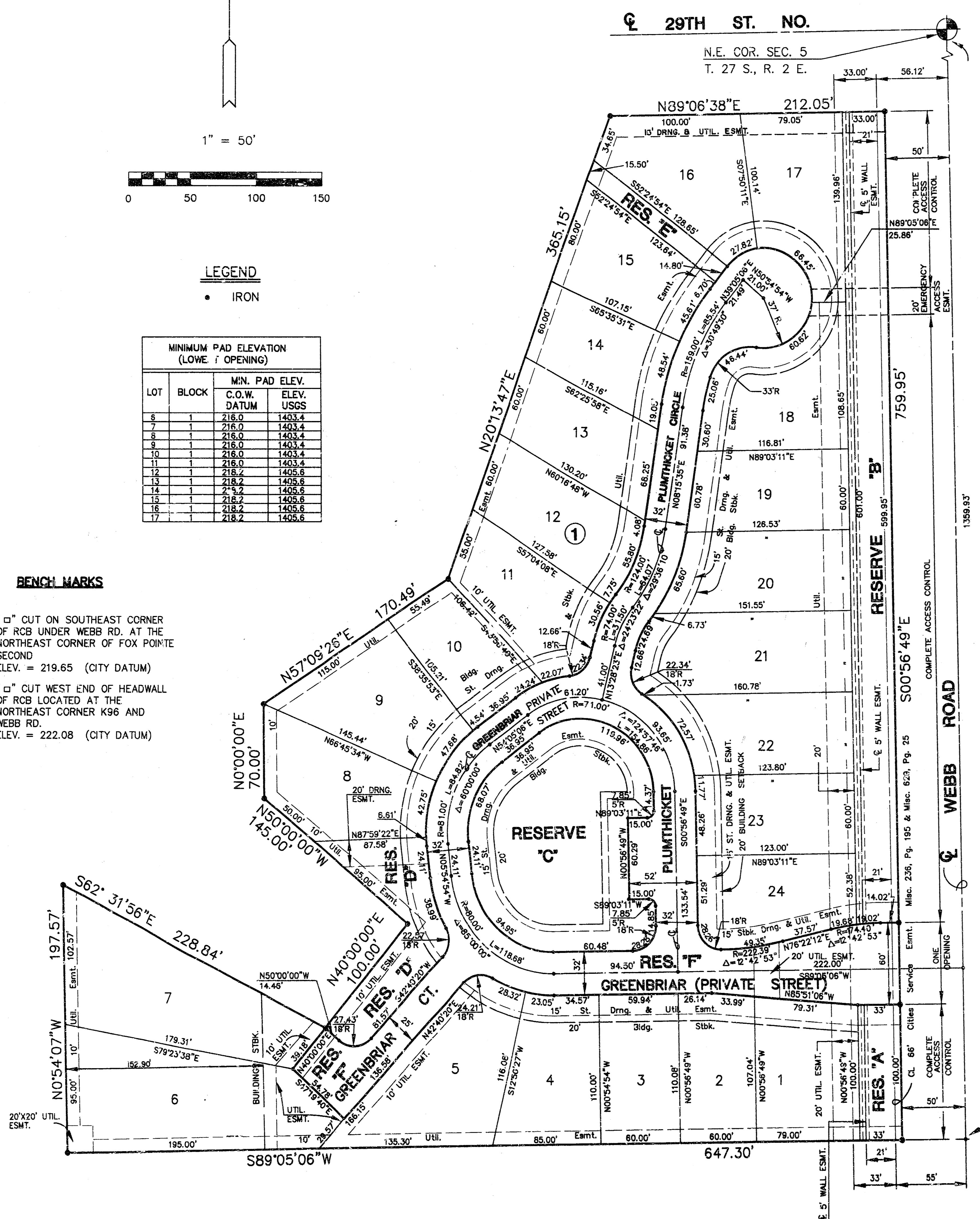
- IRON

MINIMUM PAD ELEVATION (LOWE / OPENING)		
LOT	BLOCK	MIN. PAD ELEV. C.O.W. DATUM ELEV. USGS
6	1	215.0 1403.4
7	1	215.0 1403.4
8	1	215.0 1403.4
9	1	215.0 1403.4
10	1	215.0 1403.4
11	1	215.0 1403.4
12	1	215.2 1405.6
13	1	215.2 1405.6
14	1	215.2 1405.6
15	1	215.2 1405.6
16	1	215.2 1405.6
17	1	215.2 1405.6

### BENCH MARKS

BM #1 "d" CUT ON SOUTHEAST CORNER OF RCB UNDER WEBB RD. AT THE NORTHEAST CORNER OF FOX POINTE SECOND ELEV. = 219.65 (CITY DATUM)

BM #2 "d" CUT WEST END OF HEADWALL OF RCB LOCATED AT THE NORTHEAST CORNER K96 AND WEBB RD. ELEV. = 222.08 (CITY DATUM)

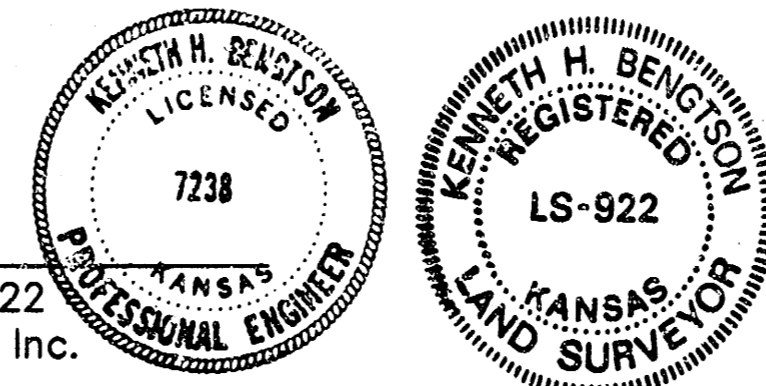


I, Kenneth H. Bengtson, a Civil Engineer and Registered Land Surveyor in Kansas, do hereby certify that I have been in responsible charge of surveying and platting of "FOX POINTE SECOND ADDITION", an addition to Wichita, Sedgwick County, Kansas, into lots, a block, and reserves the same being accurately set forth in the accompanying plat and described herein.

A replat of Lot 24, Block 1, FOX POINTE, an addition to Wichita, Sedgwick County, Kansas.

All lots, blocks, easements, building setbacks including the Drainage Easement on Film 1131, Page 292 within the above described property are hereby vacated and repealed by virtue of K.S.A. 12-512(b).

I hereby certify that the details of this plat are correct to the best of my knowledge and belief this 21<sup>st</sup> day of February, 1996.



Kenneth H. Bengtson  
Kenneth H. Bengtson, P.E., R.L.S. #922  
Mid-Kansas Engineering Consultants, Inc.  
411 North Webb Road  
Wichita, KS 67206

Know all men by these presents that we the undersigned property owners of the lands as above set forth in the Civil Engineer's and Registered Land Surveyor's Certificate, have caused the same surveyed and platted into lots, a block, and reserves the same to be known as "FOX POINTE SECOND ADDITION" an addition to Wichita, Sedgwick County, Kansas. Easements for the construction and maintenance of public utilities and drainage as indicated on the accompanying plat are hereby granted. The 5.00 wall easement is granted for the construction and maintenance of a privacy wall, public utilities are allowed to cross the wall easement. Reserves A, B, C, D, E, and F shall be platted for landscaping irrigation, lighting, and sidewalks. Reserve F is also platted for entry monuments and entry gate, streets, and parking. The Reserves shall be owned and maintained by the homeowners association. All abutters right of access to or from Webb Road over and across the East lines Reserve A and B of FOX POINTE SECOND ADDITION, are hereby granted to the City of Wichita. Minimum pad elevations are as indicated on the face of the plat. The 20' Emergency Access Easement is granted for emergency vehicles.

LEEWOOD HOMES, INC.

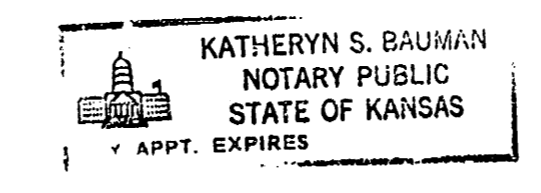
Joe H. Lee, Pres.  
Joe H. Lee, President

STATE OF KANSAS)  
ss.  
SEDGWICK COUNTY)

BE IT REMEMBERED, that on this 21<sup>st</sup> day of February, 1996, before me the undersigned, a Notary Public in and for the County and State aforesaid, came Joe H. Lee, President of Leewood Homes, Inc., to me personally known to be the same person who executed the foregoing instrument of writing and duly acknowledged the execution of the same.

IN WITNESS WHEREOF, I have hereunto set my hand and affixed my official seal, the day and year last above written.

Katheryn S. Bauman  
Katheryn S. Bauman  
Notary Public  
My appointment expires: 1-24-99



This plat of "FOX POINTE SECOND ADDITION", has been submitted to and approved by the Wichita-Sedgwick County Metropolitan Area Planning Commission, Wichita, Kansas.

Dated this 25<sup>th</sup> day of JANUARY, 1996.

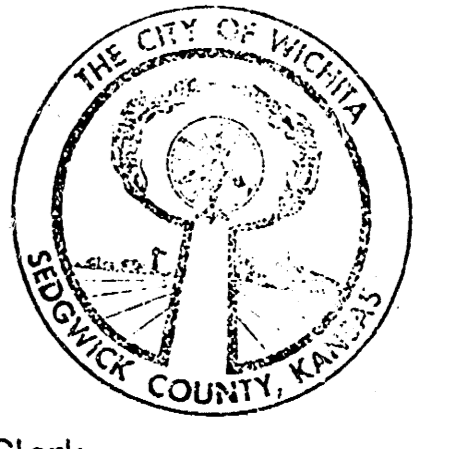
WICHITA-SEDGWICK COUNTY METROPOLITAN PLANNING COMMISSION

Susan Osborne-Howes, Chairman  
Marvin S. Krout, Secretary



This plat approved and all dedications shown thereon, if any, accepted by the City Council of the City of Wichita, Kansas, this 26<sup>th</sup> day of MARCH, 1996.

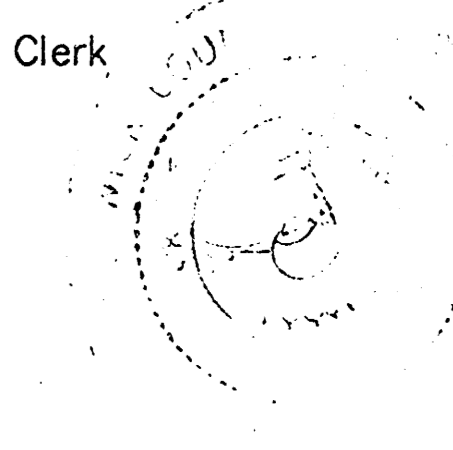
Bob Knight, Mayor



Pat Burnett, Deputy City Clerk

Entered on transfer record this 9<sup>th</sup> day of April, 1996.

Susan E. Crockett-Sproun, County Clerk



STATE OF KANSAS)  
ss.  
SEDGWICK COUNTY)

This is to certify that this instrument was filed for record in the Register of Deeds office this 10<sup>th</sup> day of April, 1996.

Pat Kettle, Register of Deeds

Phyllis Hernandez, Deputy  
Ed Reese  
PHYLLIS HERNANDEZ

#1518716

