

1st STREET

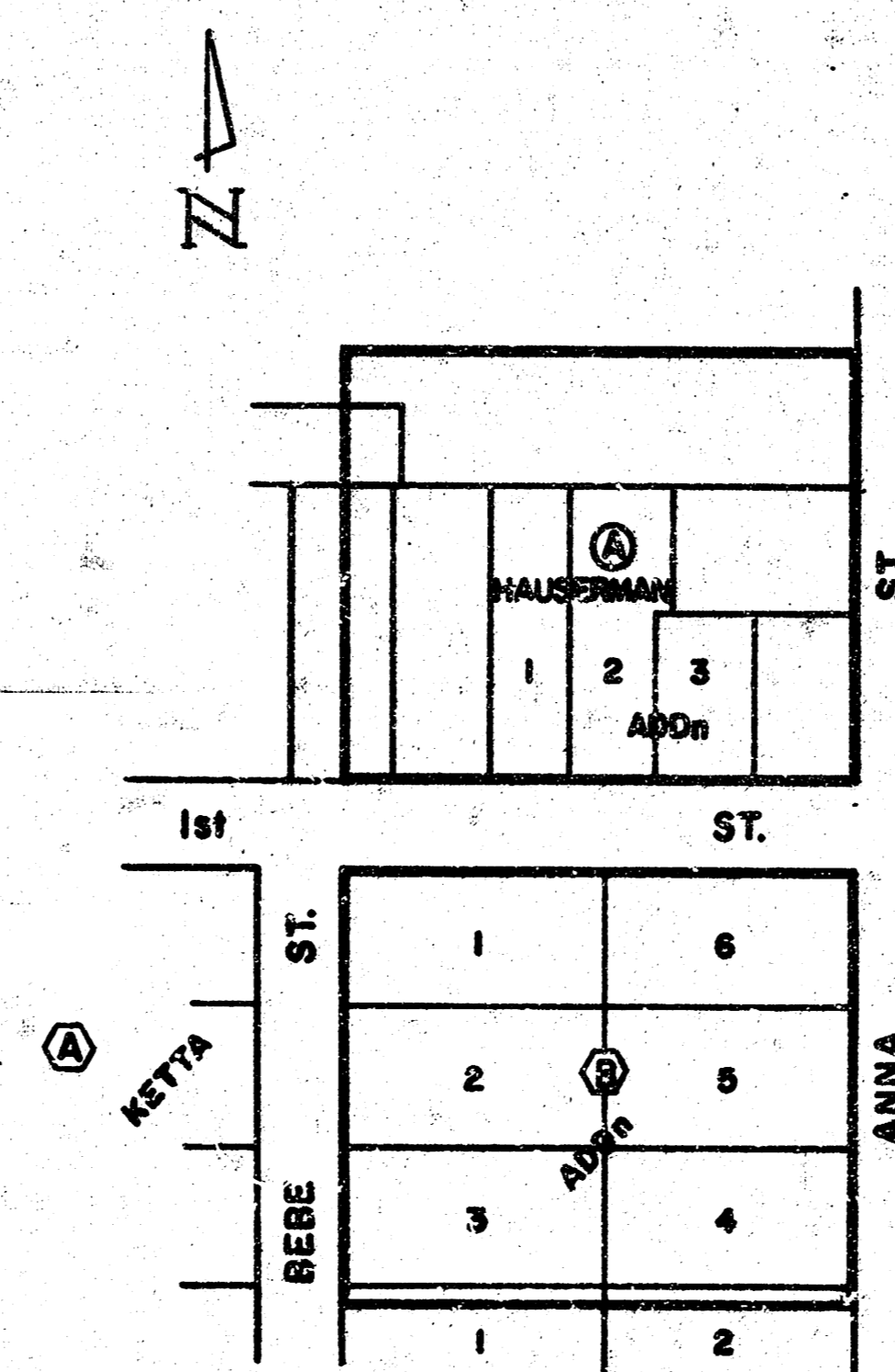
E.L. BEBE ST. TO W.L. ANNA ST.

CITY OF WICHITA, KANSAS

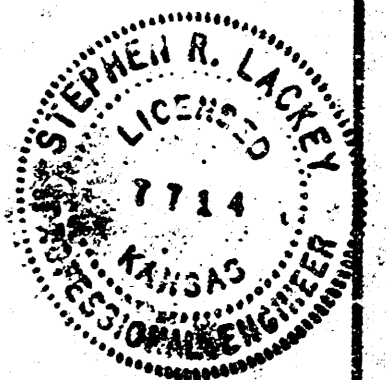
R.W. BRUGGEMAN DIRECTOR OF ENGINEERING / CITY ENGINEER

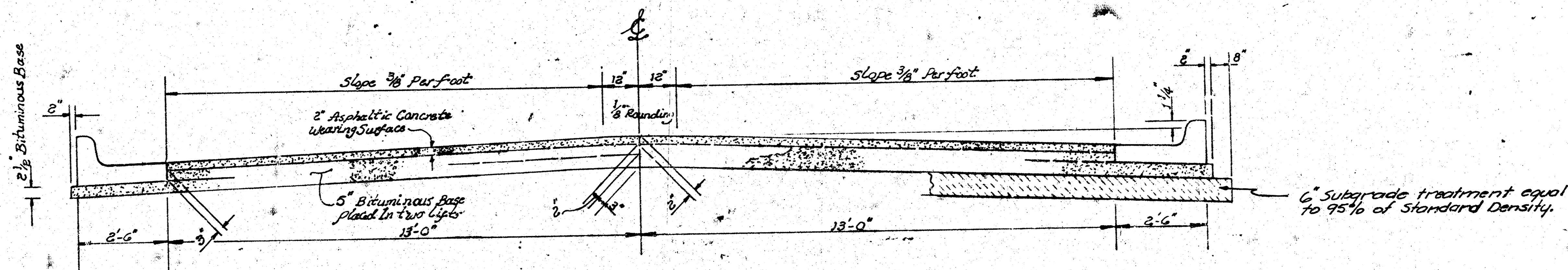
DATE:

PROJ. NO. 472 76 245 81118 000 000 001



LOCATION MAP  
SCALE: 1" = 150'





**TYPICAL SECTION**

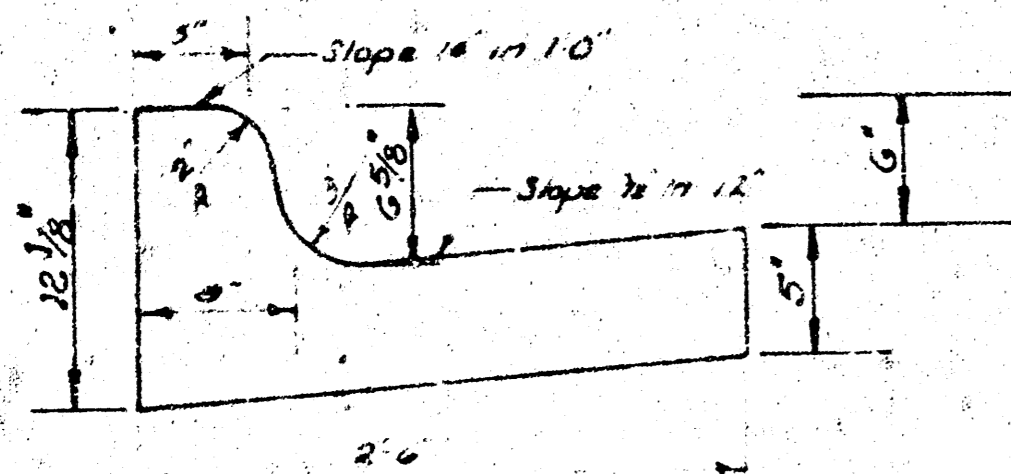
**31' ASPHALTIC CONCRETE PAVEMENT WITH BITUMINOUS BASE**

A TACK COAT OF EMULSIFIED ASPHALT (SS-1H) SHALL BE APPLIED AT AN APPROXIMATE RATE OF 0.05 GALLONS PER SQ. YD. BETWEEN LIFTS OF ASPHALTIC MATERIALS WHEN ORDERED BY THE ENGINEER. TACK COAT WILL NOT BE PAID FOR DIRECTLY AND SHALL BE CONSIDERED AS SUBSIDIARY TO PRICE BID FOR ASPHALTIC PAVEMENT.

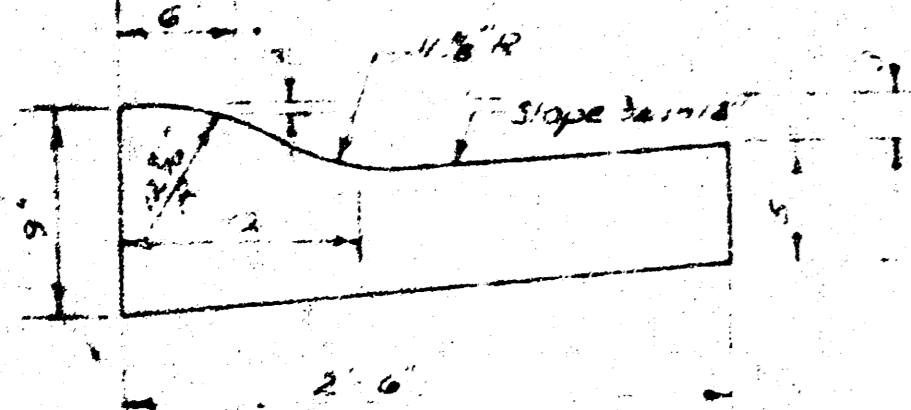
BITUMINOUS BASE AND ASPHALTIC CONCRETE WEARING SURFACE SHALL BE PLACED WITH A LAYDOWN MACHINE HAVING AUTOMATIC CONTROLS FOR CROWN AND GRADE. CONSTRUCTION JOINTS IN EACH LIFT SHALL BE STAGGERED A MINIMUM DISTANCE OF 1' WITH JOINTS IN PRECEDING LIFTS AND SUCH THAT A JOINT WILL BE CONSTRUCTED ON THE PAVEMENT CENTERLINE IN THE TOP LIFT.

*The A.C. pavement between the Comb. Curb & Gutter shall be paid as 5 1/2% 7" A.C. Pavement (5 Bituminous Base). The Bituminous Base under the Comb. Curb & Gutter shall be paid as 5 1/2% 2 1/2" Bituminous Base.*

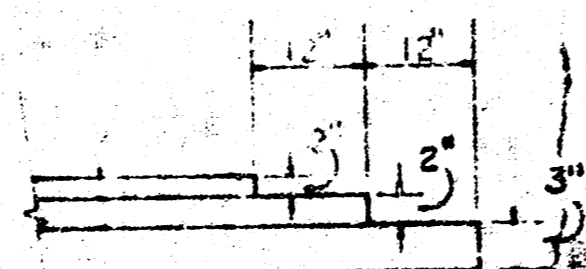
COMBINED CURB & GUTTER



ROLL TYPE CURB & GUTTER



**DETAIL OF TRANSVERSE CONSTRUCTION JOINTS**



TRANSVERSE CONSTRUCTION JOINTS SHALL BE CONSTRUCTED IN FLEXIBLE BASE PAVEMENTS AT LOCATIONS WHERE PAVEMENT TEMPORARILY ENDS TO FACILITATE FUTURE PAVEMENT CONSTRUCTION AS SHOWN BY DETAIL. THE COST OF CONSTRUCTING THE TRANSVERSE CONSTRUCTION JOINTS SHALL NOT BE MEASURED OR PAID FOR DIRECTLY BUT SHALL BE INCLUDED IN THE BID PRICE FOR SQUARE YARDS OF ASPHALTIC CONCRETE PAVEMENT.

2/4

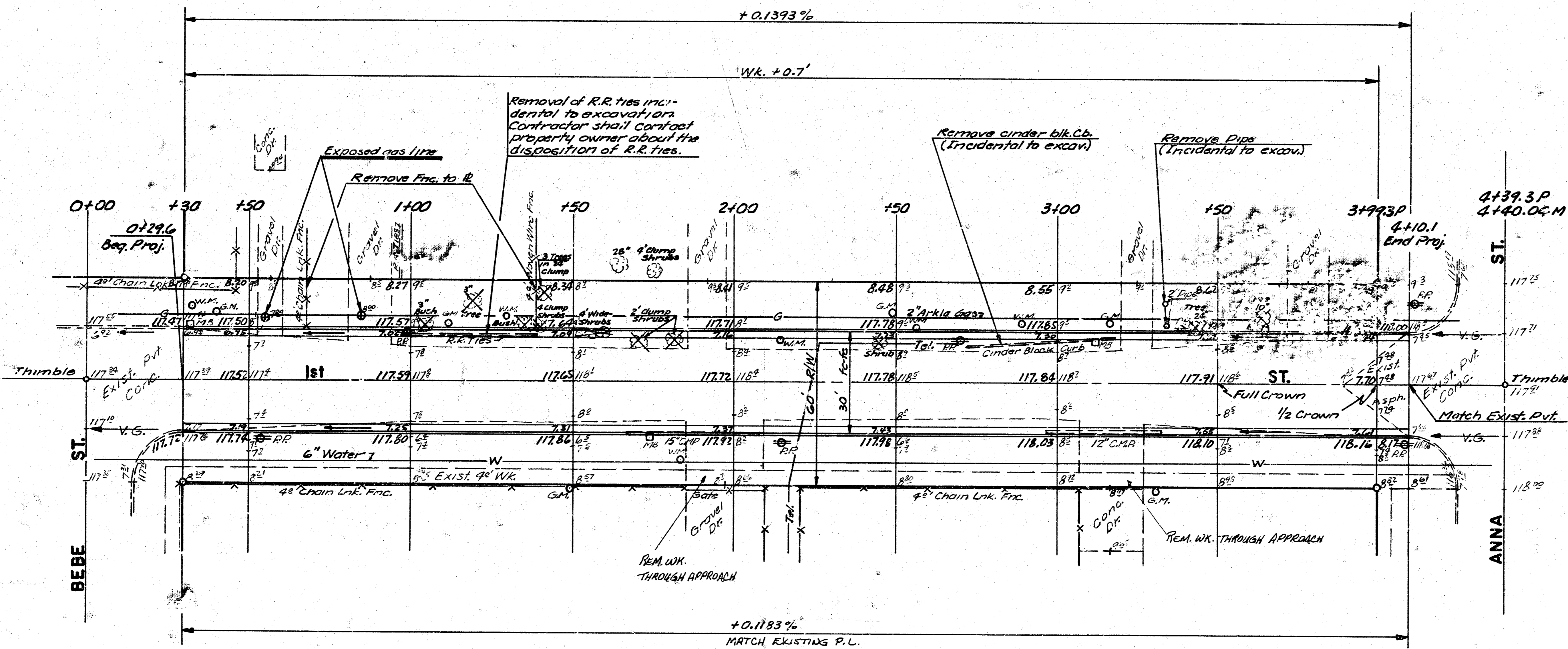
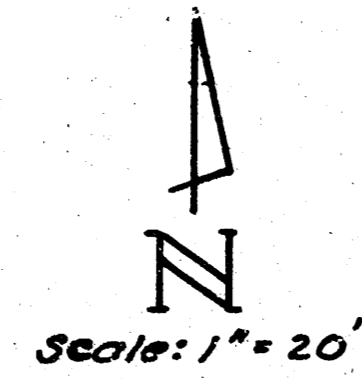
1st ST.

E.L. BEBE ST. TO W.L. ANNA ST.

CITY OF WICHITA, KANSAS

PROJ. NO. 472 76 245 8118 000 000 001

B.M. 119.66 Anna & 2<sup>nd</sup> St, City Std Disc 42' West & 36' N. of E. both  
 B.M. 119.70 Anna & 1<sup>st</sup> St, R.R. Spk., South side power pole at N.W. Cor. of Anna & 1<sup>st</sup> St.



Survey M.S. E.A. 10/14  
 Plan D.E.C.  
 Exc  
 Checked

**SUB-GRADE**  
 TYPE OF SUB-GRADE TREATMENT SHALL BE DETERMINED BY THE FIELD ENGINEER. SUB-GRADE TREATMENT MAY CONSIST OF LIME TREATMENT, CEMENT TREATMENT, SUB-GRADE MODIFICATION, OR ANY COMBINATION OF THESE.

THE CONTRACTOR SHALL BE RESPONSIBLE FOR PRESERVING PROPERTY IRONS. THE CONTRACTOR SHALL BE REQUIRED TO RE-ESTABLISH ANY PROPERTY IRONS WHICH ARE DAMAGED OR DESTROYED BY HIS CONSTRUCTION OPERATIONS. SUCH IRONS SHALL BE RE-ESTABLISHED BY A LICENSED LAND SURVEYOR OR A LICENSED PROFESSIONAL ENGINEER IN ACCORDANCE WITH STATE LAWS.

NOTE: Bushes & shrubs to be removed are marked thus . Removal shall be incidental to excavation.

NOTE: Trees to be removed are marked thus . Except that any tree marked for removal, which in the opinion of the Engineer can be saved, shall be spared.

**Earthwork**  
**Excav.**  
 828.6 C.Y.  
 +10% 82.9  
 911.5 C.Y.

7-20 DRIVES  
 Manipulation = 1380.8 S.Y.

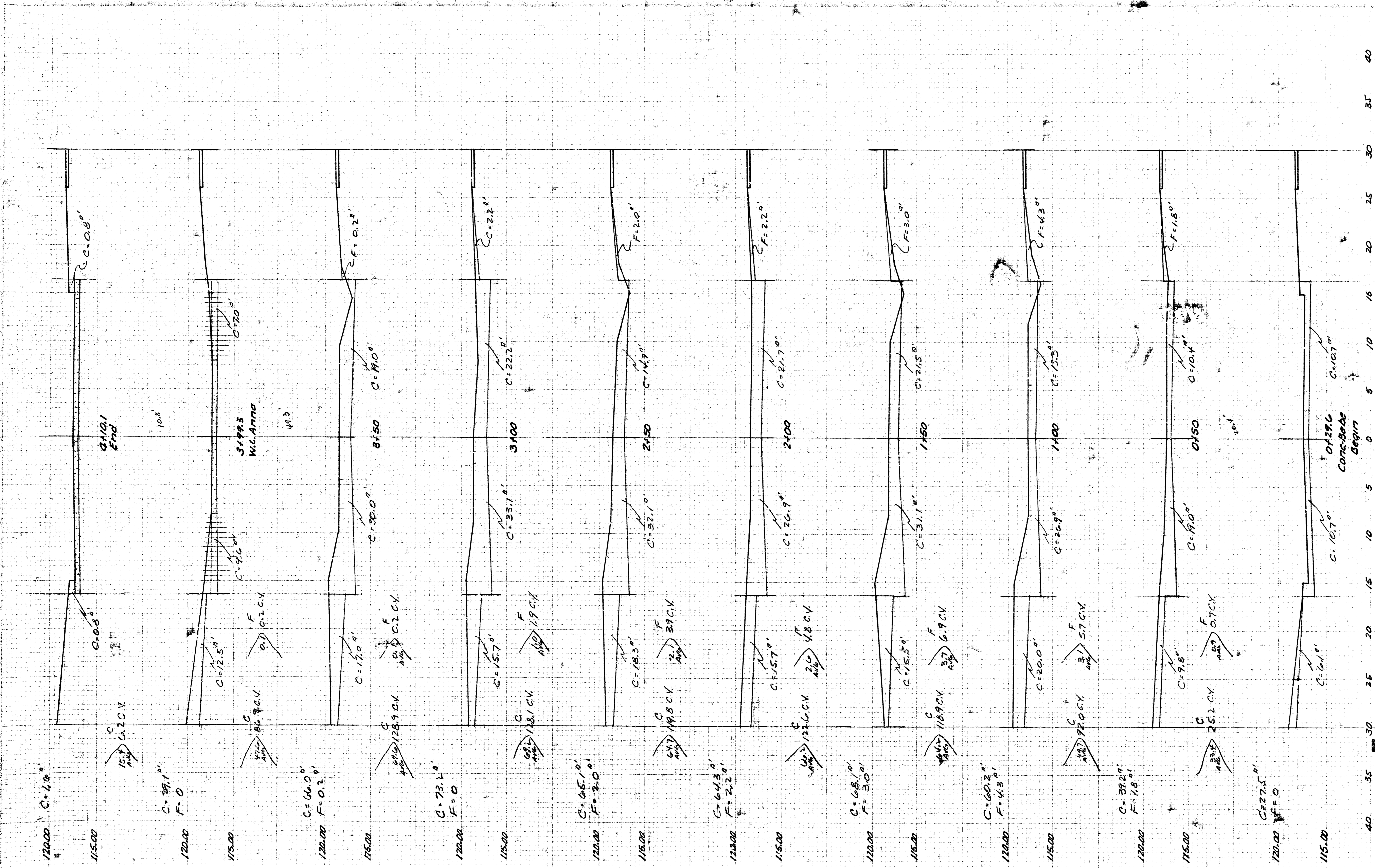
3/4

1st ST.  
 E.L. BEBE ST. TO W.L. ANNA ST.

CITY OF WICHITA, KANSAS

PROJ. NO. 472 76 245 8119 000 000 001

3/4



TOTAL EMBANKMENT  
 EXCAV. FILL  
 PER 625.6 C.Y. 243 C.Y.

1st ST.

E.L. BEBE ST. TO W.L. ANNA ST.

CITY OF WICHITA, KANSAS

PROJ. NO. 472 76 245 8118 000 000 001

4/4

10 5 1 1 4