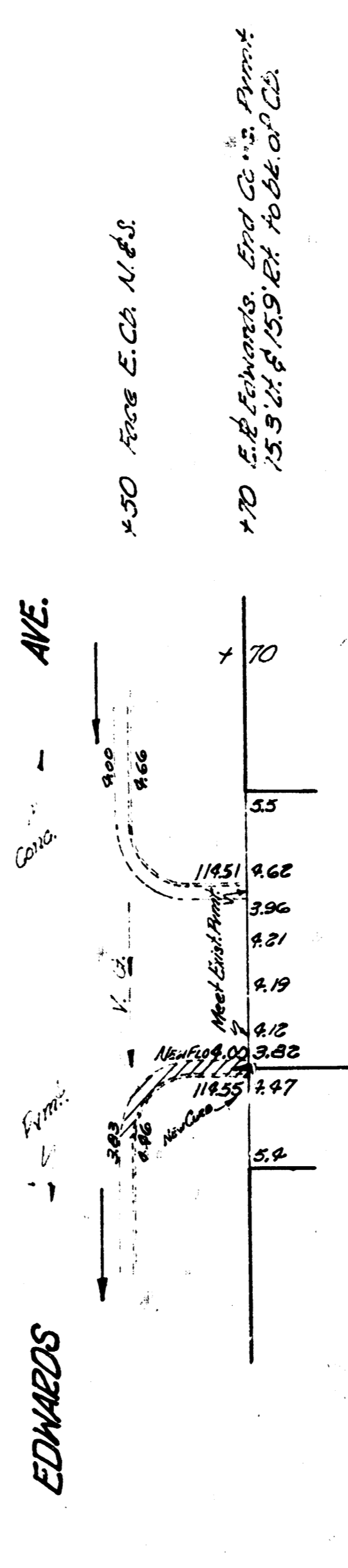
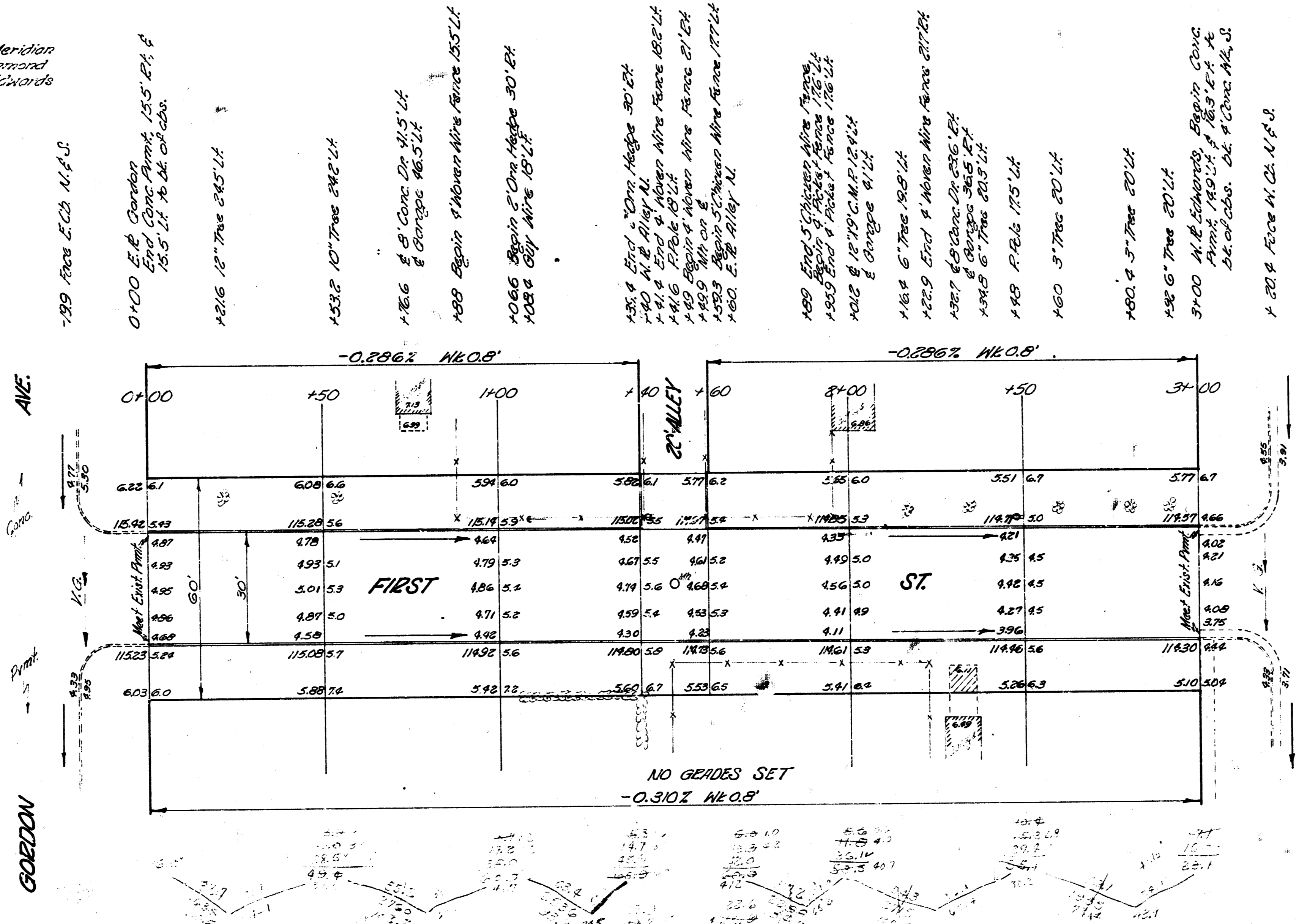


B.M. 116.21 Standard N.E. Cor. 24th & Meridian
 B.M. 117.45 "T" to 720' Fire Hydrant, N.W. Cor. 1st & Marikhan
 B.M. 116.66 S.E. Cor. Conc. Slab House # 201 N. Edwards
 B.M. 117.75 "T" to 720' Fire Hydrant, S.W. Cor. 1st & Edwards
 B.M. 117.08 N.E. Cor. 1st Step, House # 161 N. Gordon

Stationing on E



NOTE TO FIELD ENGINEER:
Remove & replace combined curb & gutter necessary to provide adequate drainage for return.

NOTE: ENGINEER WILL MARK TREES & HEDGES TO BE REMOVED & WILL TURN IN CARD DENOTING SAME.

NOTE TO CONTRACTOR & FIELD ENGINEER
All entrance pipes are to be placed on property owners property. If they do not want same, the Street Dept. will remove them.

FIRST STREET
E.L. GORDON AVE. TO W.L. RICHMOND AVE.
30' CONC. & CB.

CITY OF WICHITA, KANS.

B.E. SMITH CITY ENGINEER
APRIL 1953 PROJ. NO. C18-204



Survey Map, Bl. 116
 L.S. 116
 Unshaded

