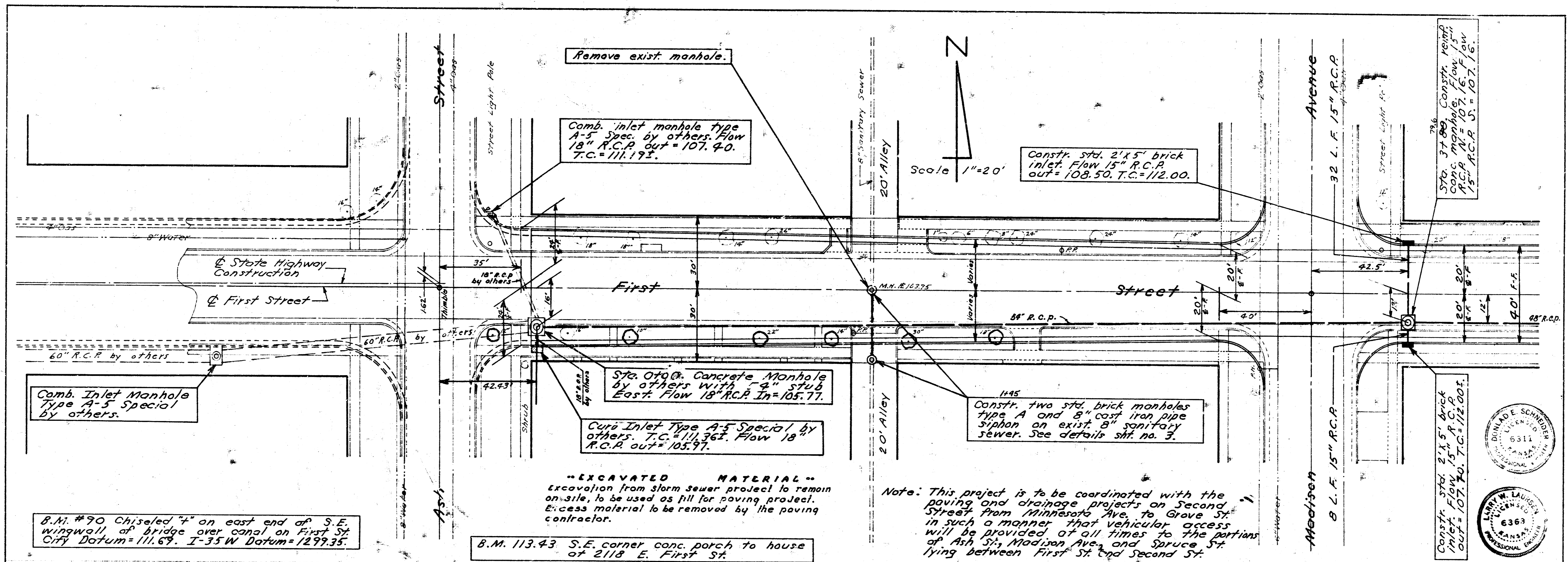
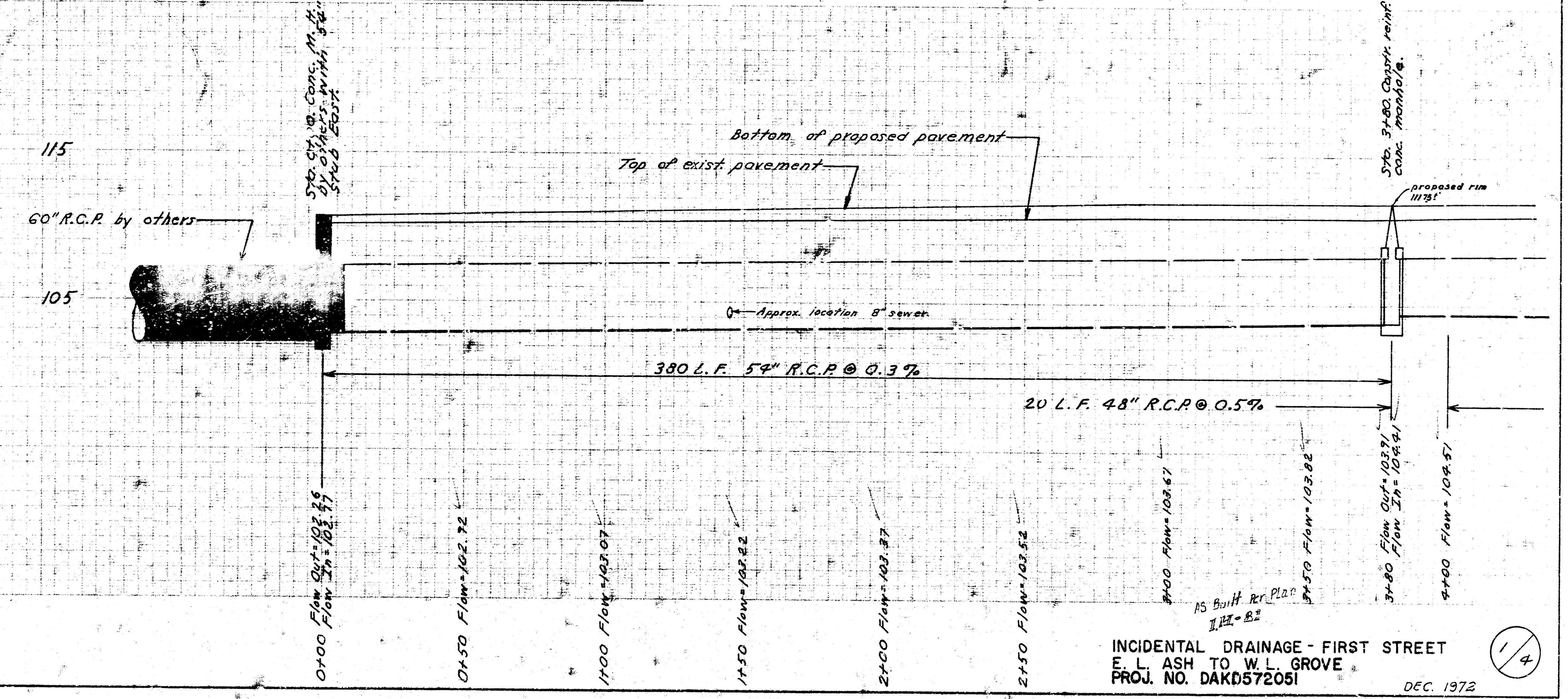


W. F. WATSON
S. SCHROEDER

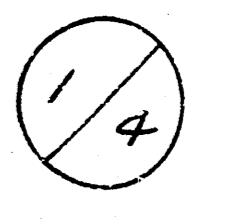


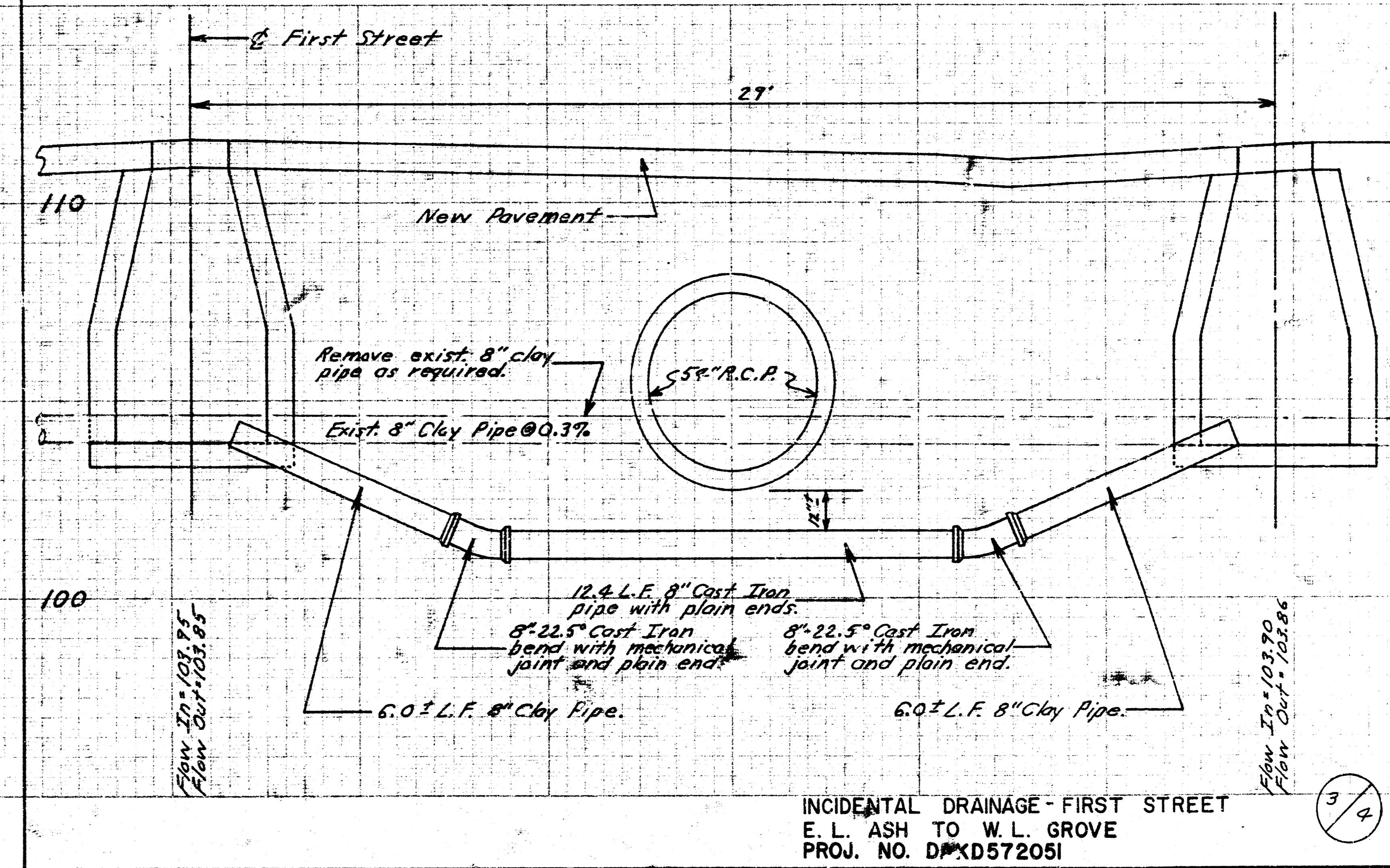
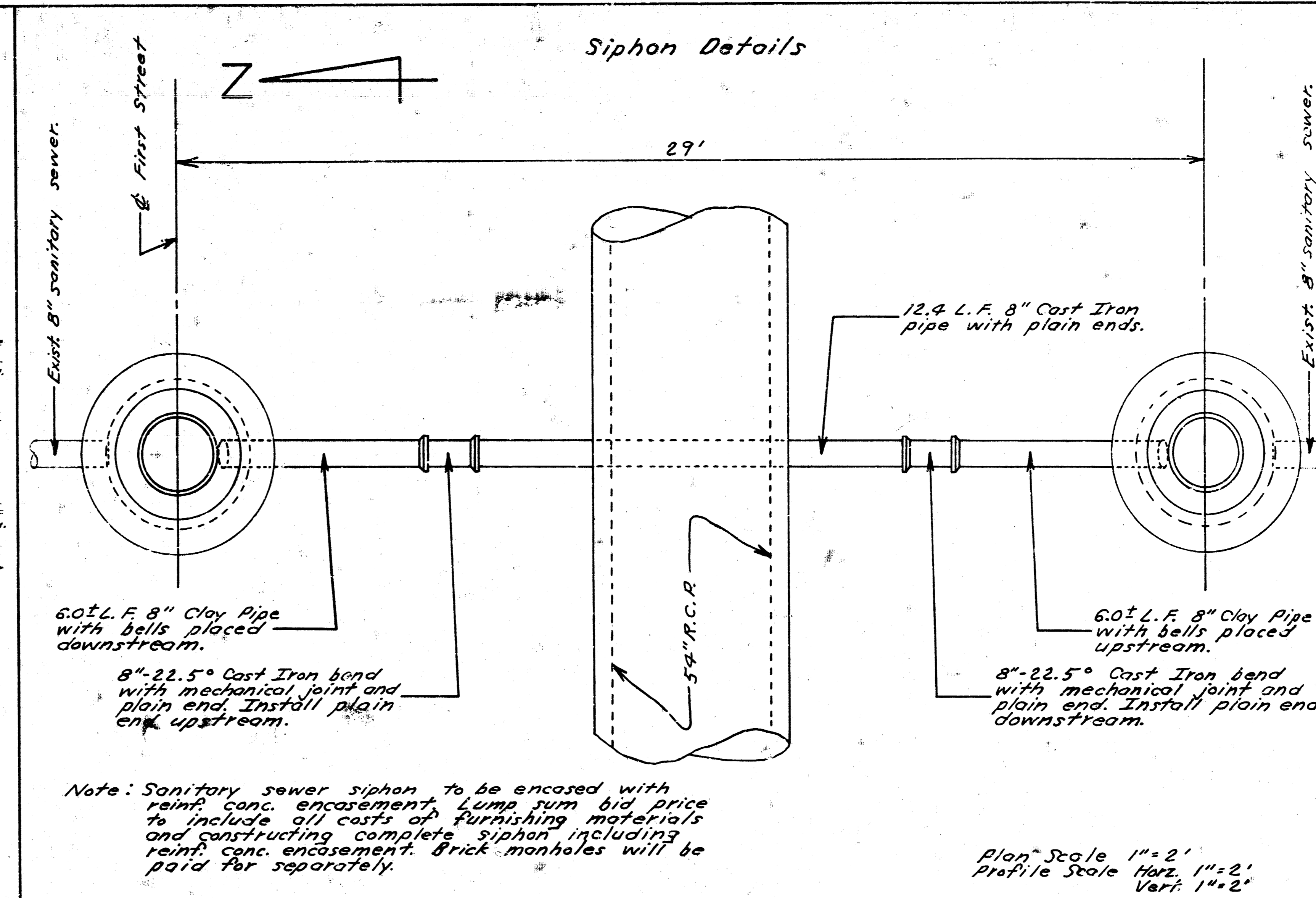
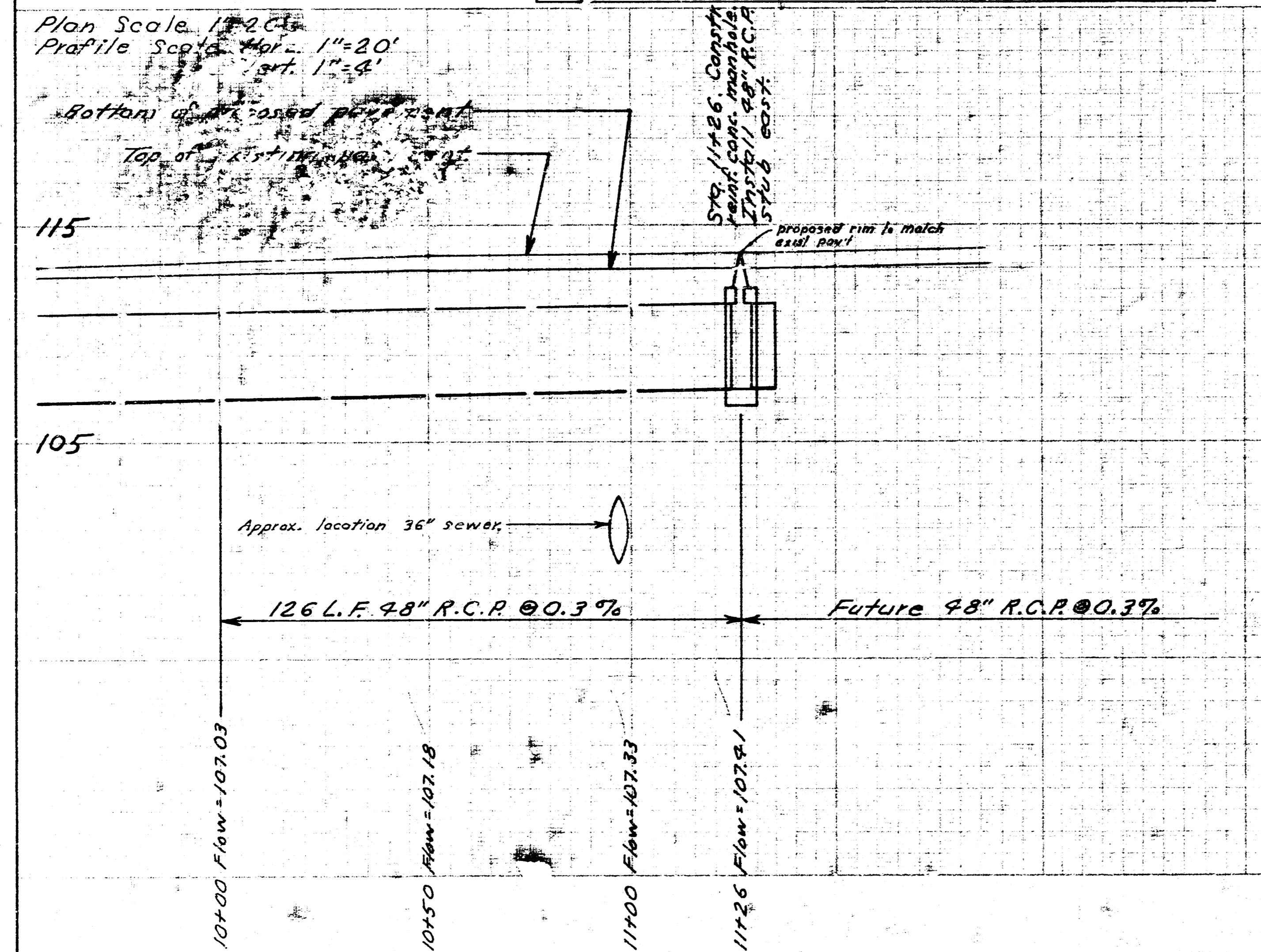
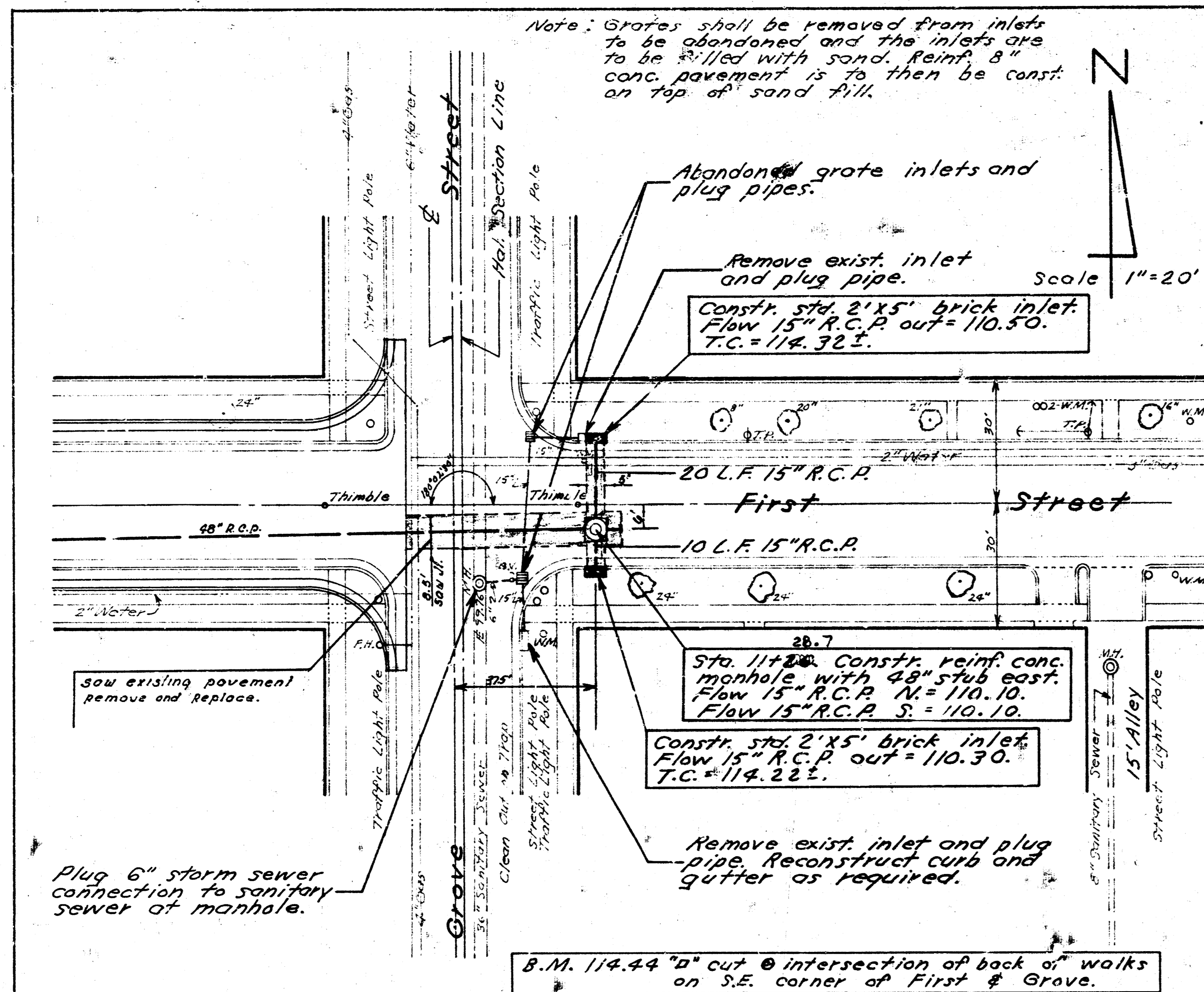
Plan Scale 1" = 20'
Profile Scale Vert. 1" = 4'

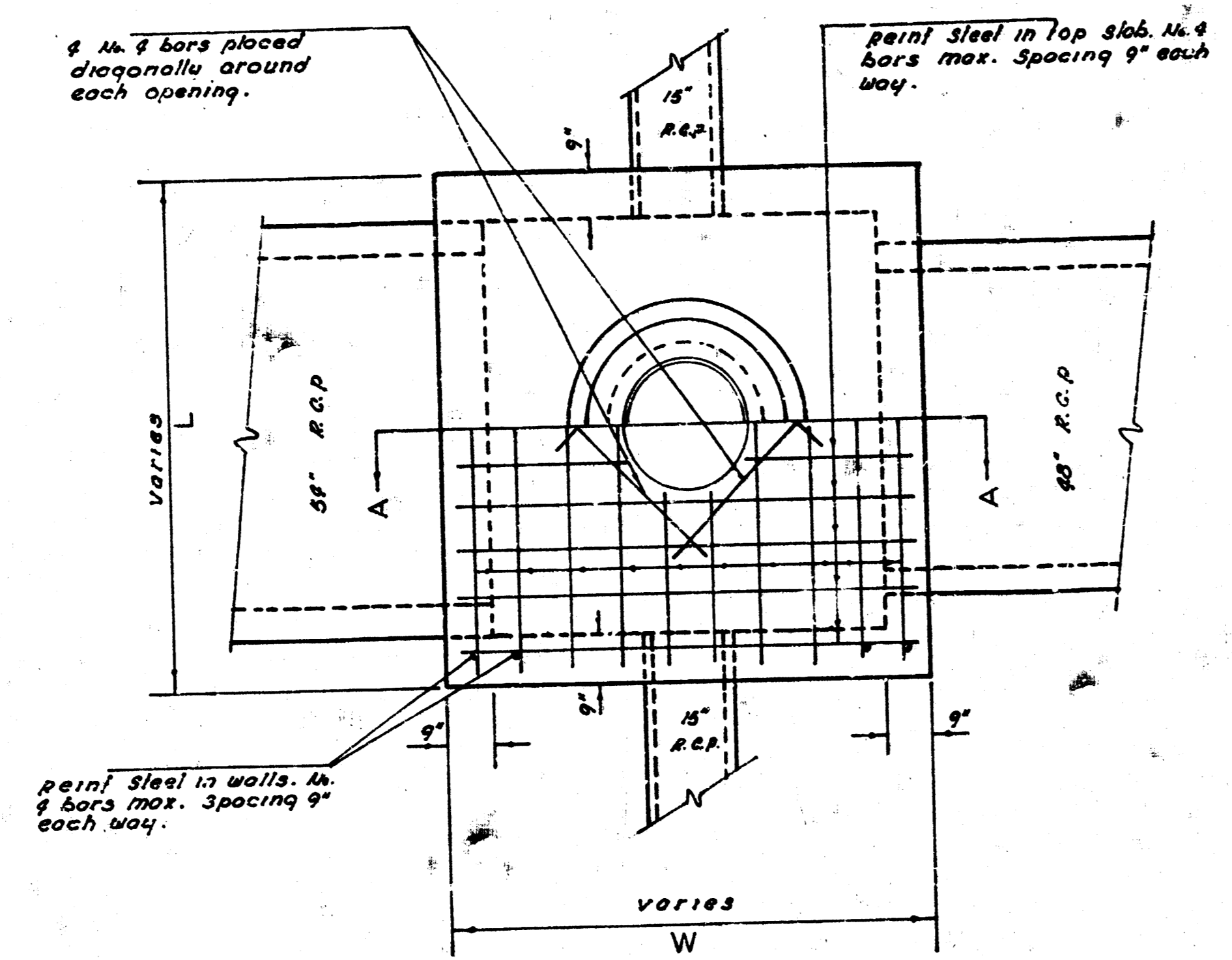


INCIDENTAL DRAINAGE - FIRST STREET
E. L. ASH TO W. L. GROVE
PROJ. NO. DAKD572051

DEC. 1972



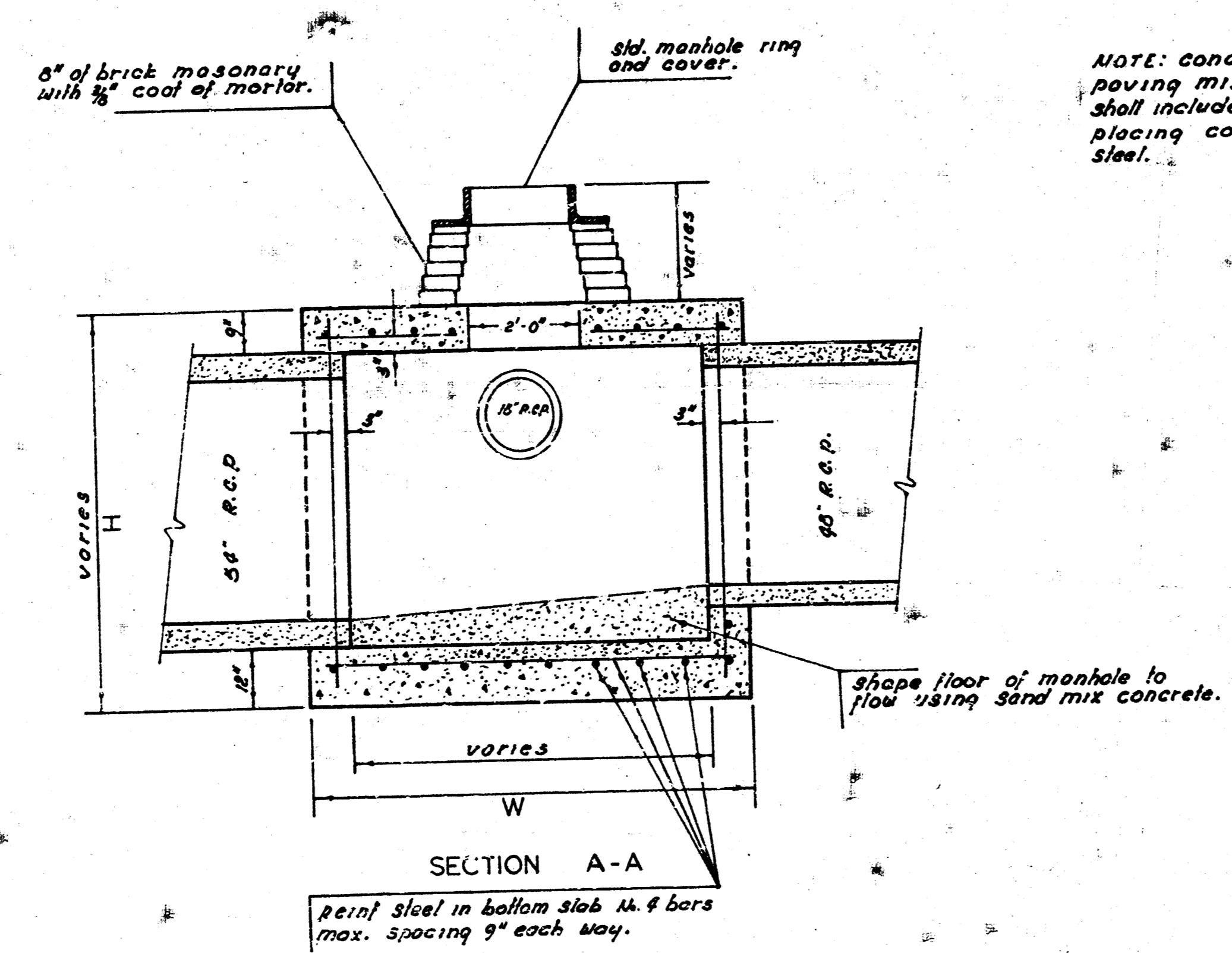




PLAN

pipe sizes shown are typical for manhole site 3100 only.

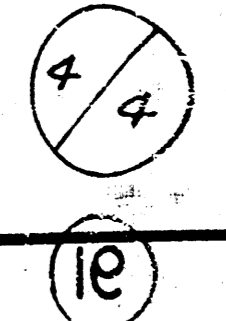
Station	Height	Length	Width
3100	7'-3"	7'-0"	7'-0"
7100	6'-7"	6'-6"	6'-6"
11120	6'-7"	6'-6"	6'-6"



SECTION A-A

NOTE: concrete for the manholes shall be a sack paving mix. the bid price for reinf. conc manholes shall include the cost of excavation, furnishing and placing concrete, bricks, cover plates, and reinf. steel.

INCIDENTAL DRAINAGE - FIRST STREET
 E. L. ASH TO W. L. GROVE
 PROJ. NO. DAKD572051

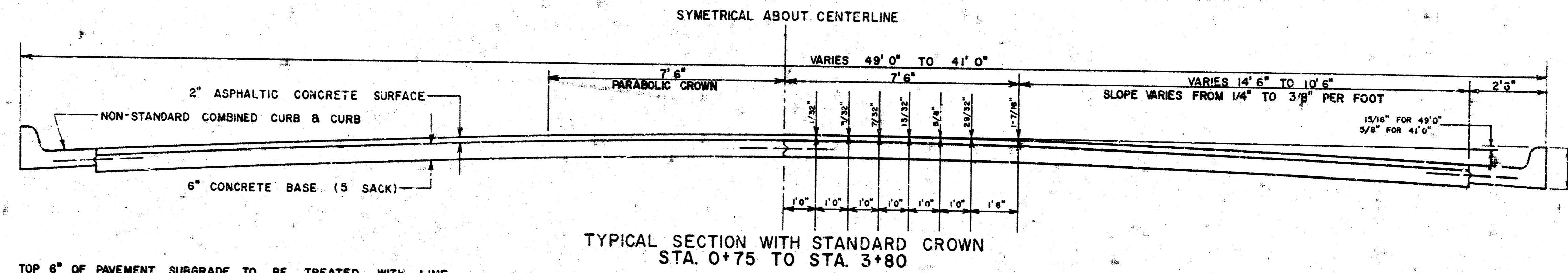


NOTE: SIGNALS REMOVAL AND RECONSTRUCTION SHALL BE AS INDICATED BY THE FIELD ENGINEER.

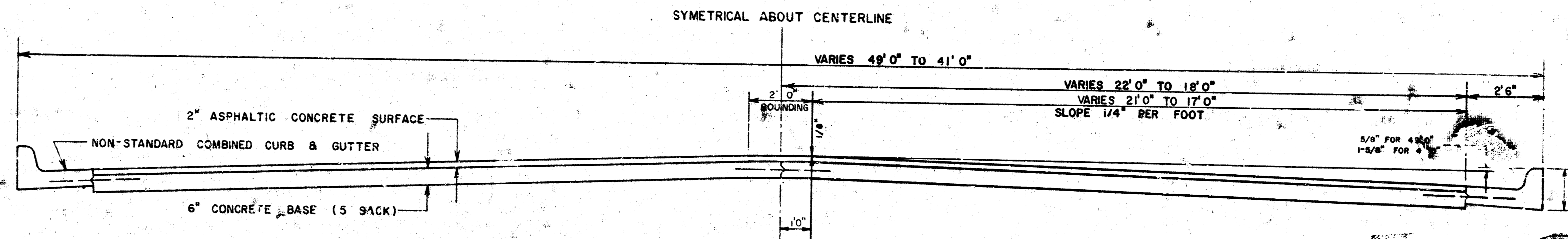
FIRST STREET
E. L. ASH TO W. L. GROVE
PROJ. NO. DAKM572051
CITY OF WICHITA, KANSAS
R. W. LINN, CITY ENGINEER

Note: This project is to be coordinated with the paving and drainage project on Second Street from Minnesota Ave. to Grove St. in such a manner that vehicular access will be provided at all times to the portions of Ash St., Madison Ave., and Spruce St. lying between First St. and Second St.

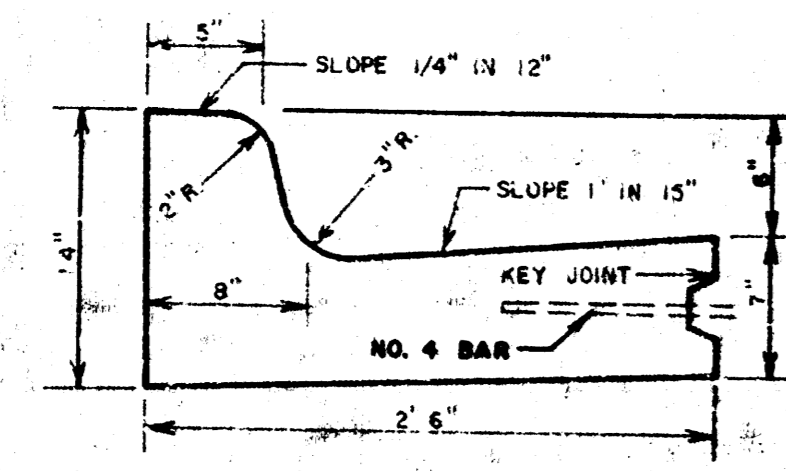
Earthwork
 Excavation = 936.7 C.Y.
 7/10% = 89.7 C.Y.
 Total = 920.4 C.Y.
 7/14.8 C.Y. 1/2
 2/11
 Compacted Fill = 4.4 C.Y.
 7/10% = 0.4 C.Y.
 Total = 4.8 C.Y.



TOP 6" OF PAVEMENT SUBGRADE TO BE TREATED WITH LIME.



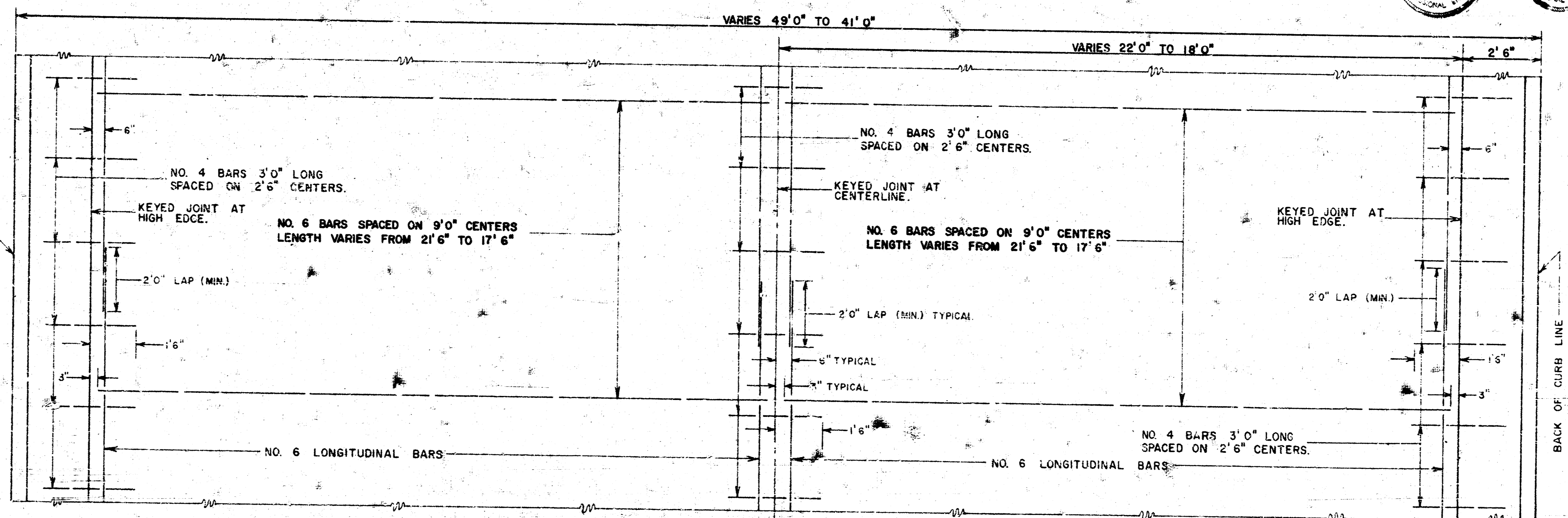
TYPICAL SECTION WITH ALTERNATE CROWN
 STA. 0+75 TO STA. 3+80



DETAIL OF NON-STANDARD
 COMBINED CURB & GUTTER

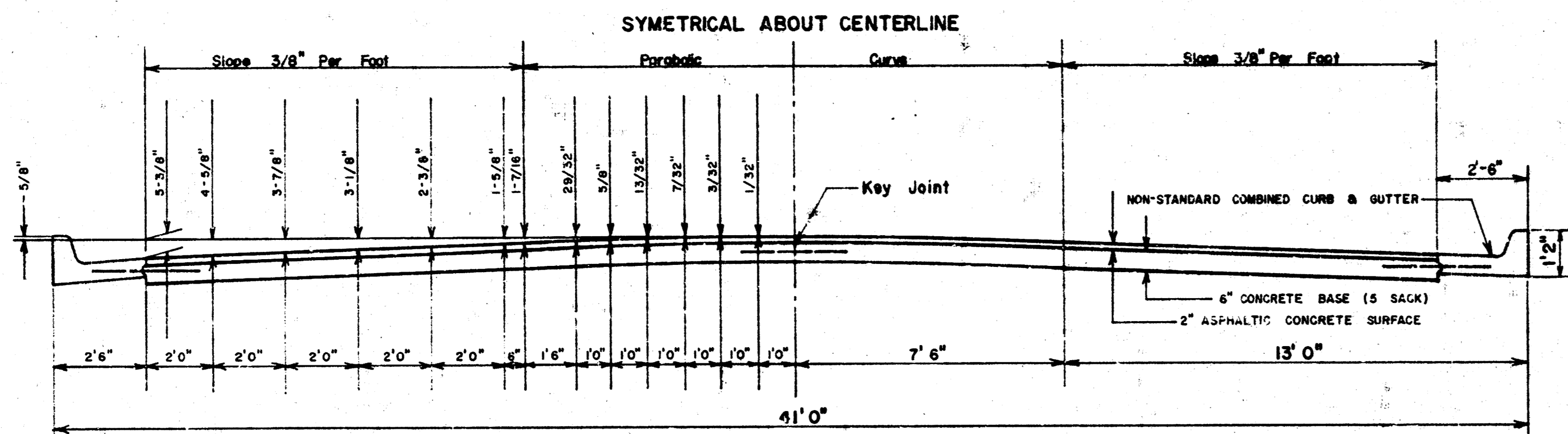
GENERAL NOTES
 CONTRACTION JOINTS MAY BE CONSTRUCTED IN COMBINED CURB AND GUTTER BY SAWING WITH AN APPROVED CONCRETE SAW. THE SAW CUT SHALL EXTEND 2-1/2" BELOW THE SURFACE OF THE GUTTER AND CURB. SAWED CONTRACTION JOINTS SHALL HAVE A MAXIMUM SPACING OF 10' AND BE FILLED WITH A SPECIFIED JOINT FILLER, SUCH THAT THE JOINT IN THE GUTTER SECTION WILL BE COMPLETELY FILLED.
 SEE SHEET NO. 3 FOR OTHER NOTES AND RAMP DRIVE DETAILS. SEE SHEET NO. 5 FOR RETAINING WALL AND STEP DETAILS.
 PAVEMENT GRADES SHOWN ON PLANS ARE FOR STANDARD CROWN.

NOTE: Excavation from storm sewer project will remain on site to be used as fill for paving project. Excess material to be removed by paving contractor.

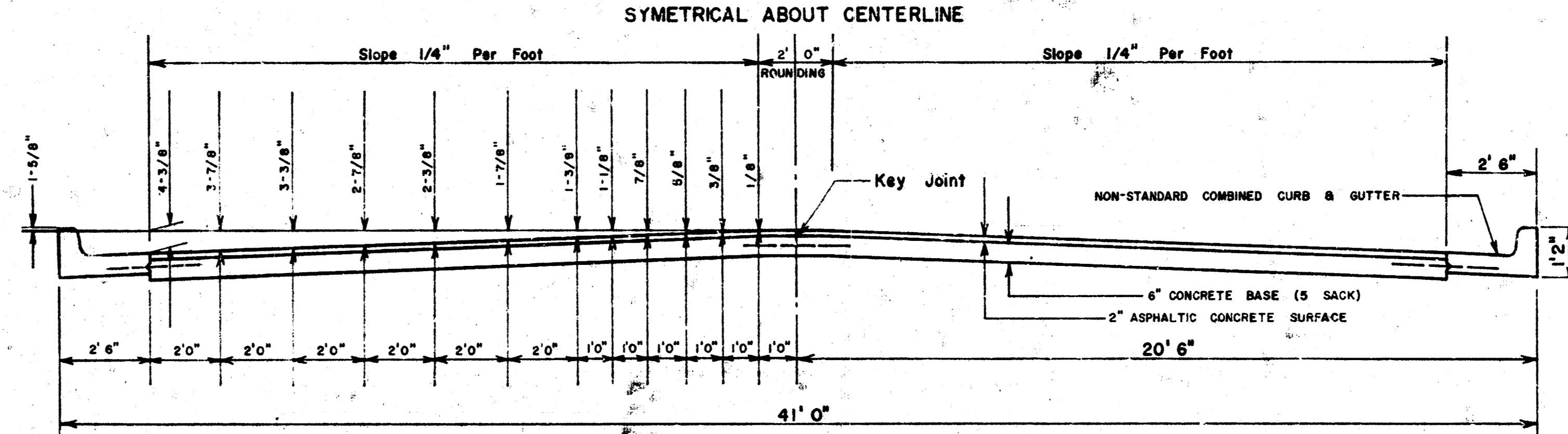


TYPICAL STEEL PATTERN

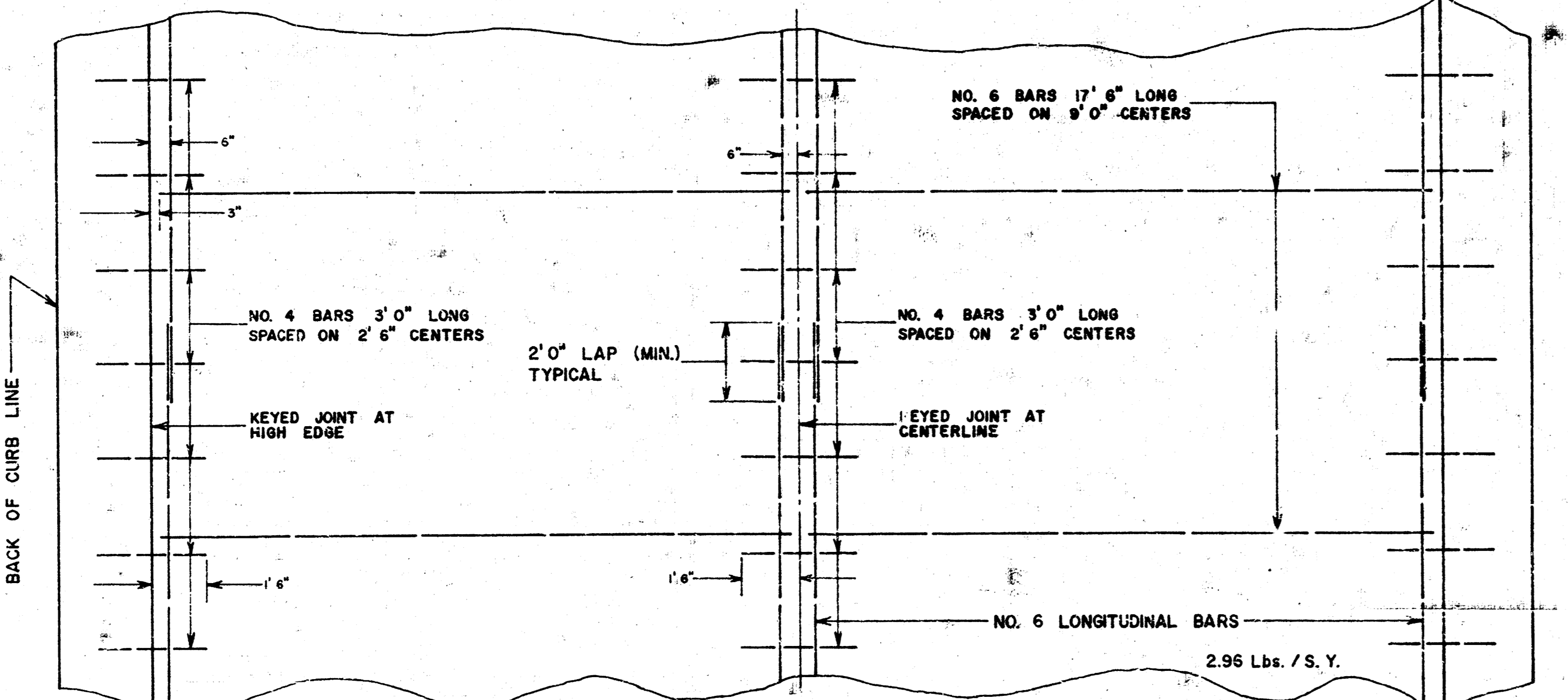
FIRST STREET
E. L. ASH TO W. L. GROVE
ASPHALT PAVEMENT
PROJ. NO. DAKM572051



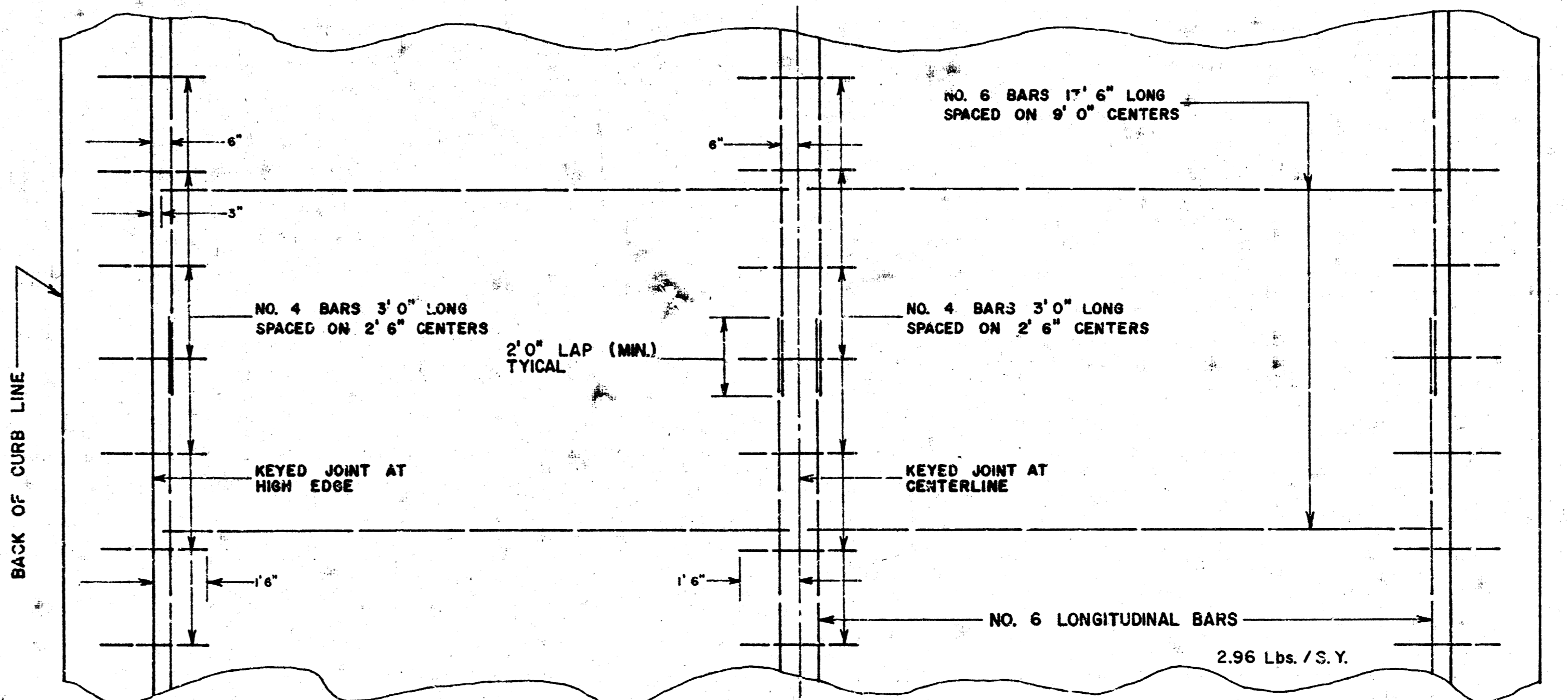
TYPICAL SECTION WITH STANDARD CROWN



TYPICAL SECTION WITH ALTERNATE CROWN



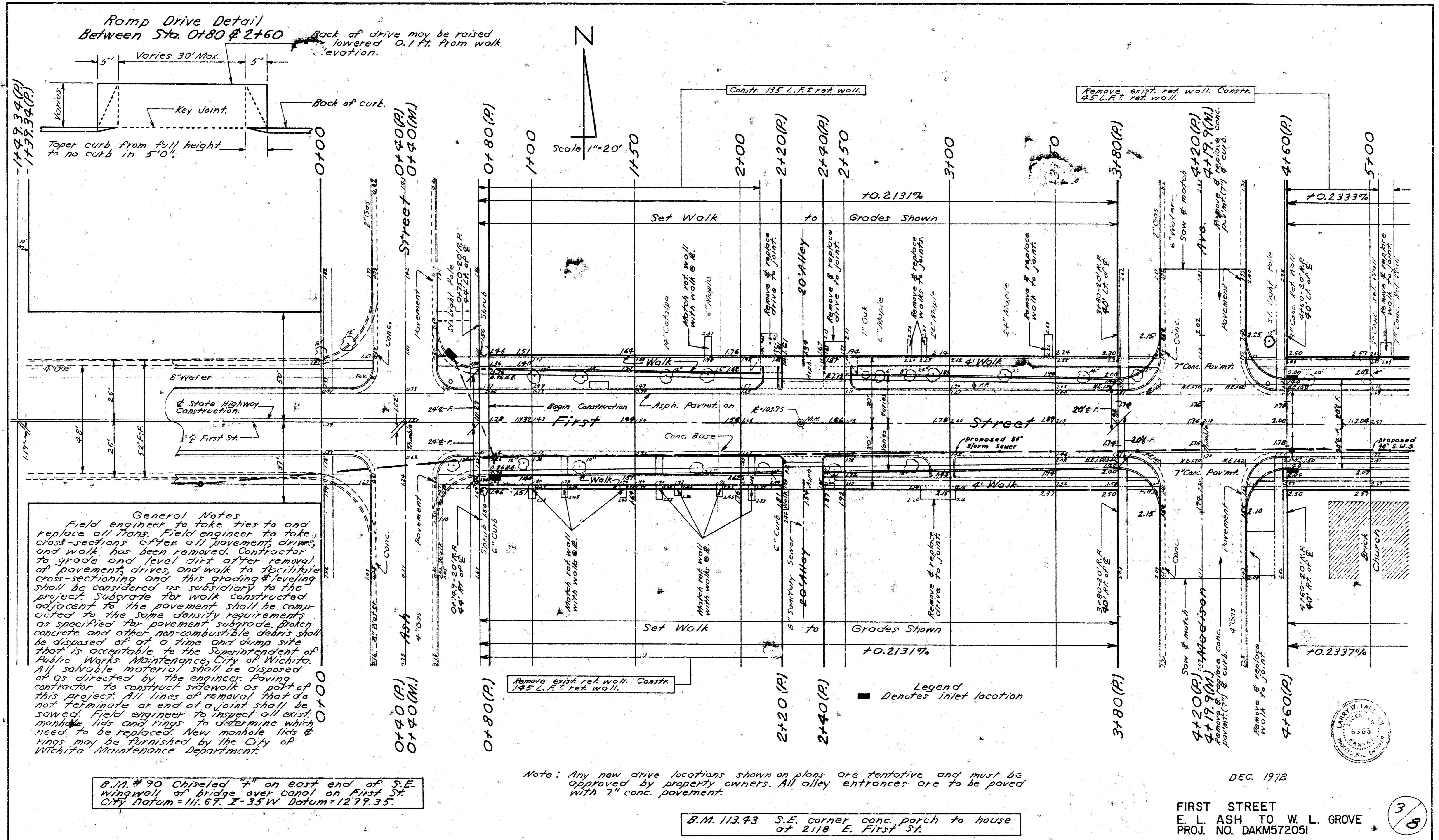
STEEL PATTERN



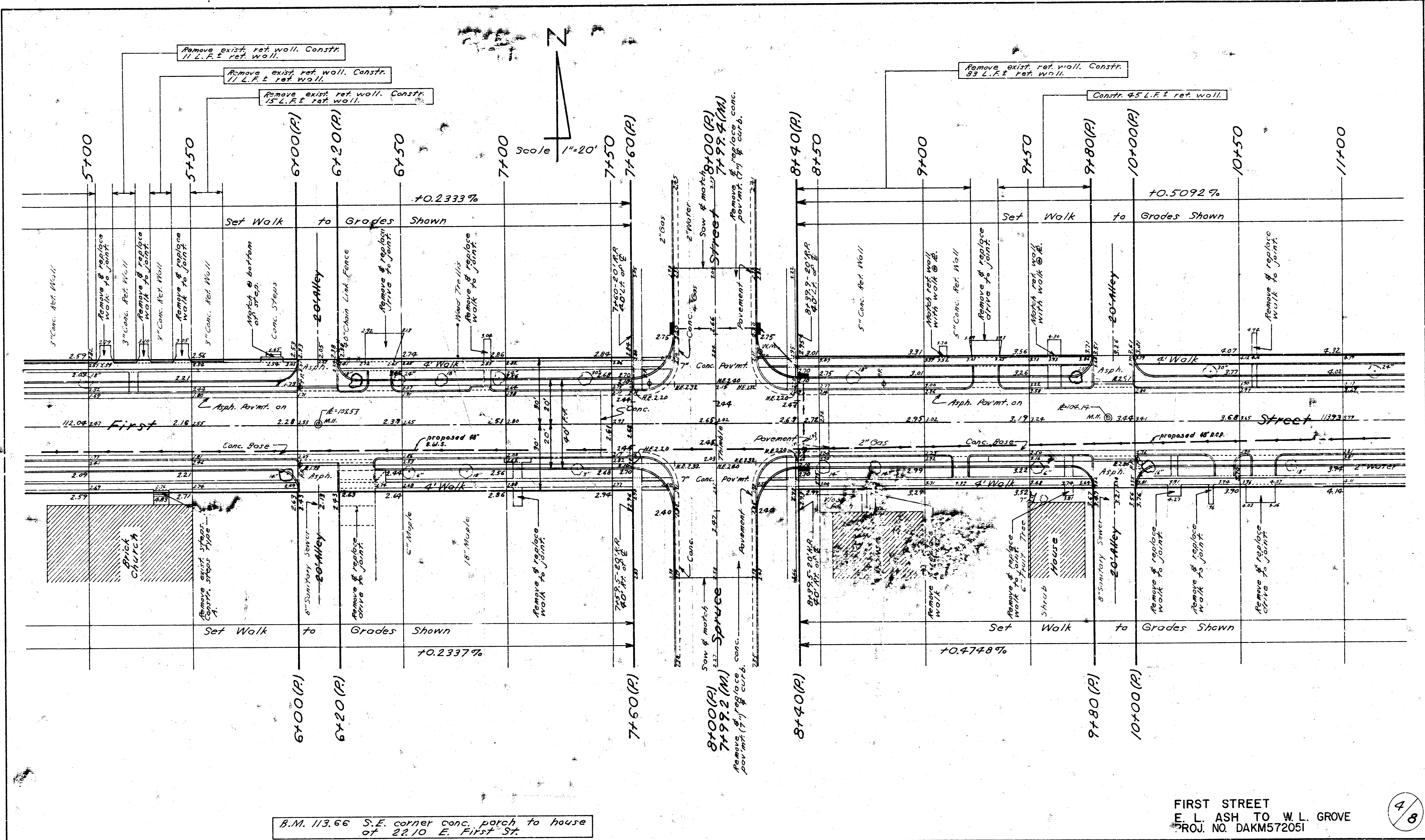
STEEL PATTERN

TYPICAL SECTIONS of 40' ASPHALTIC CONCRETE PAVEMENT
 STA. 3+80 TO STA. 11+34.4

S. M. #90
 E. L. Ash
 Ex. Schneider
 District



3/8



B.M. 113.66 S.E. corner conc. patch to house of 2210 E. First St.

FIRST STREET
 E. L. ASH TO W. L. GROVE
 PROJ. NO. DAKM572051

