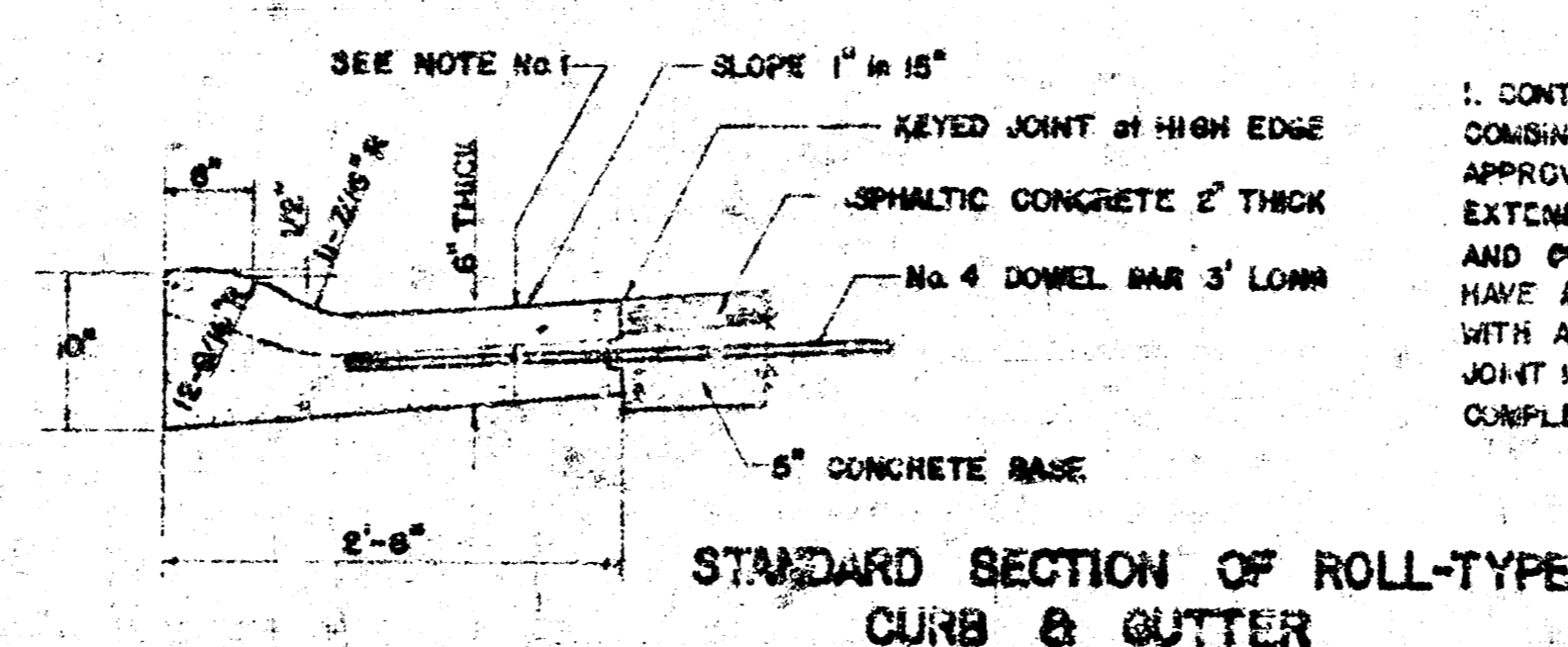
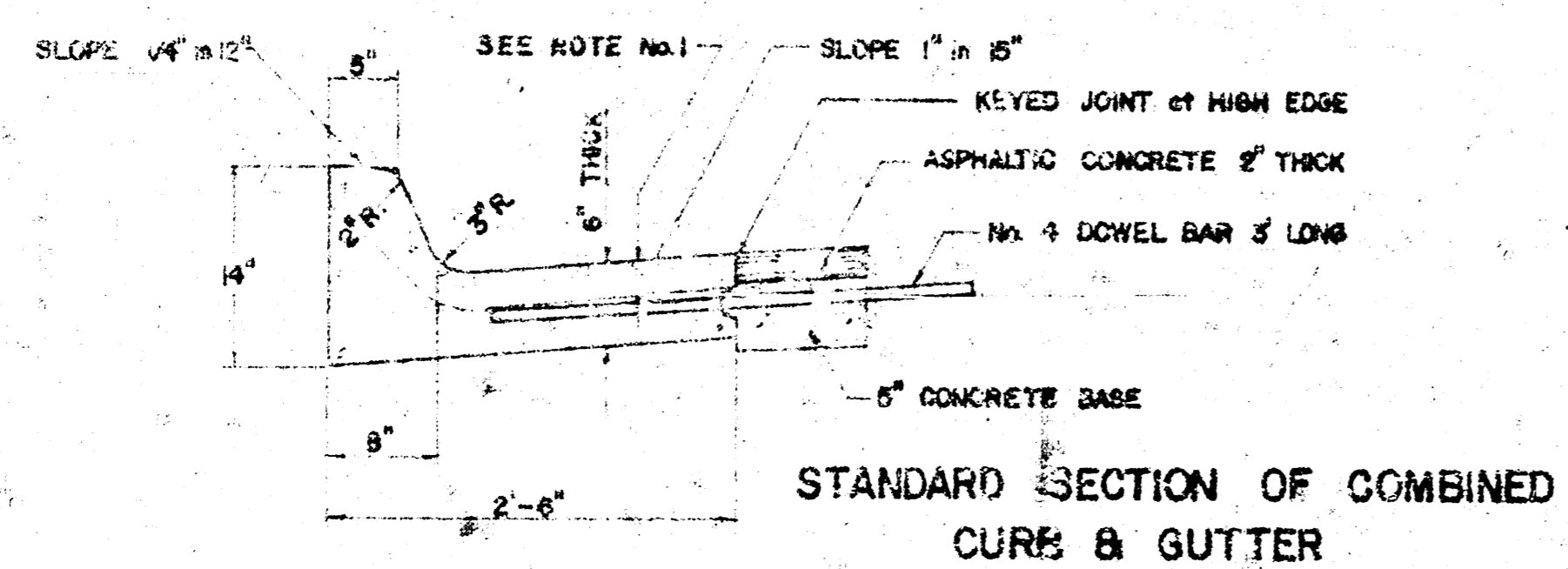
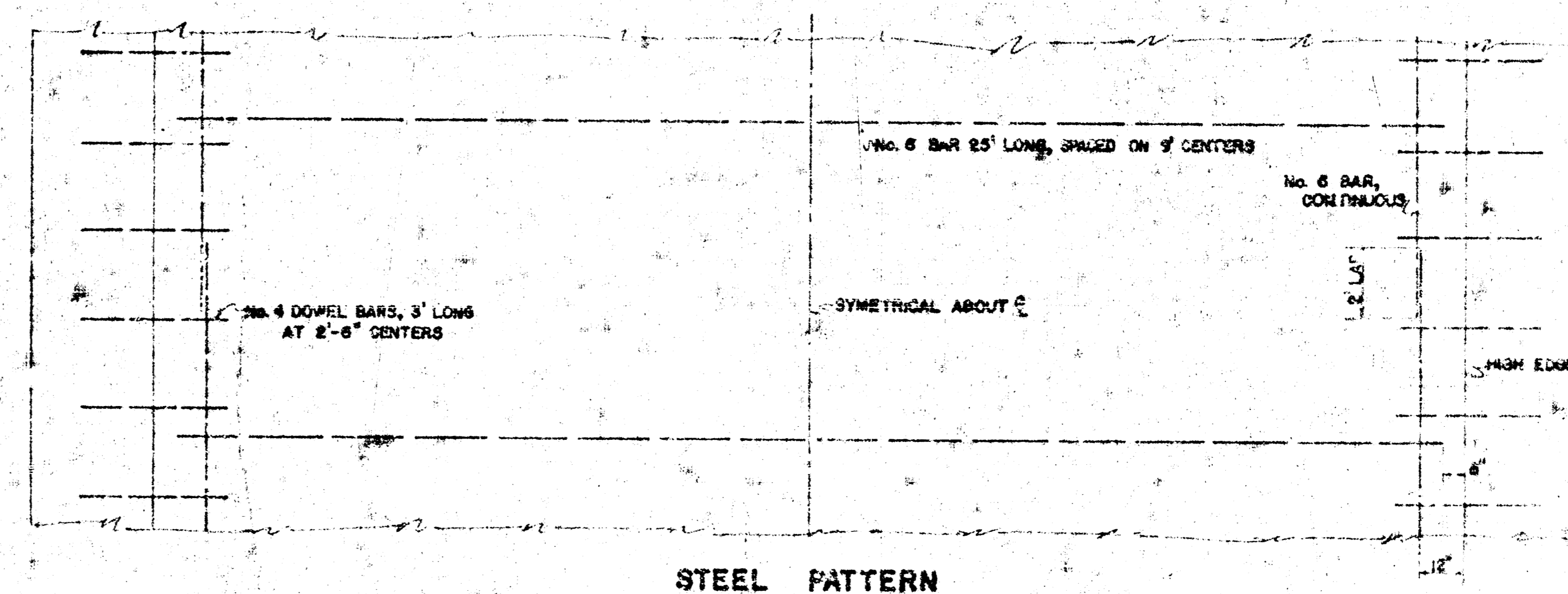
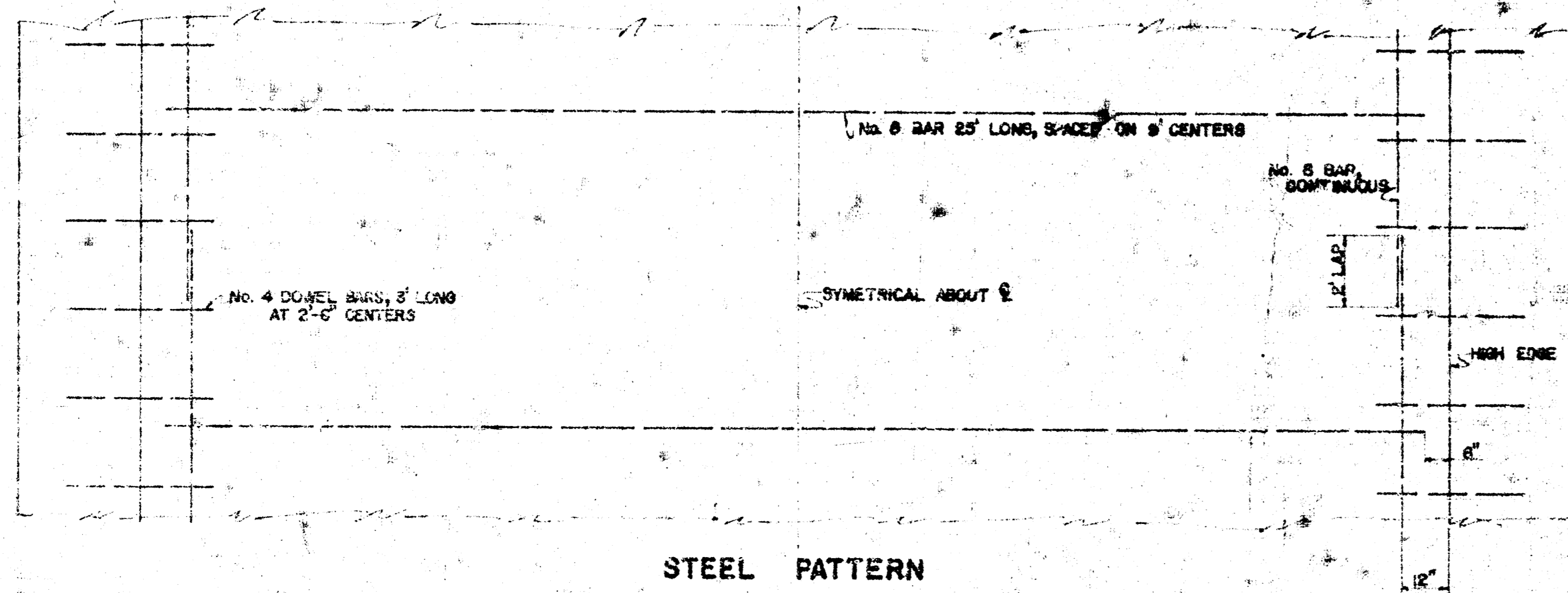
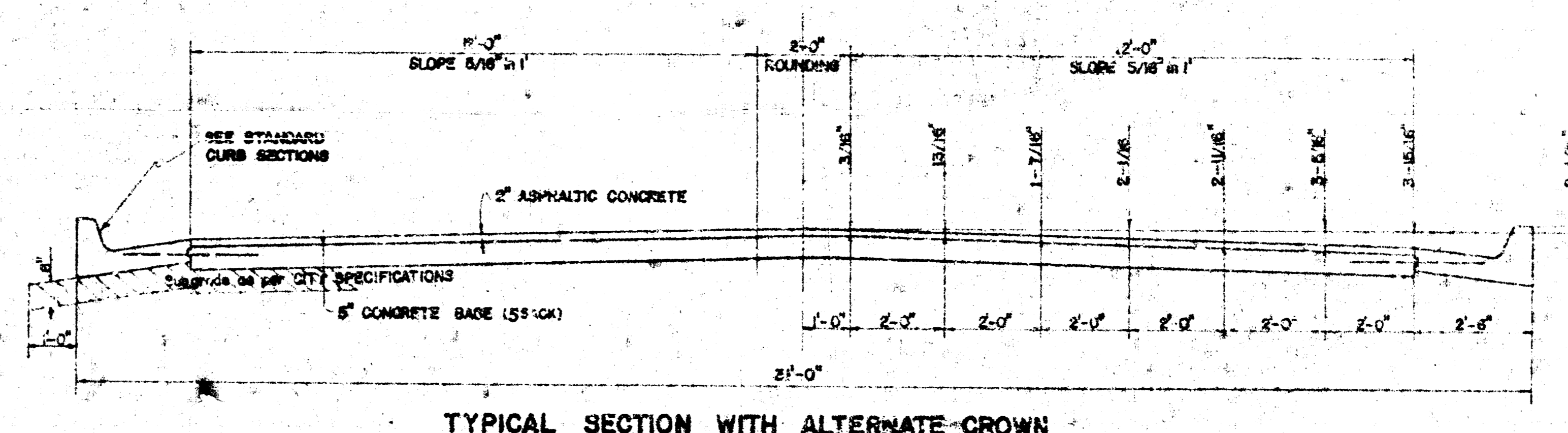
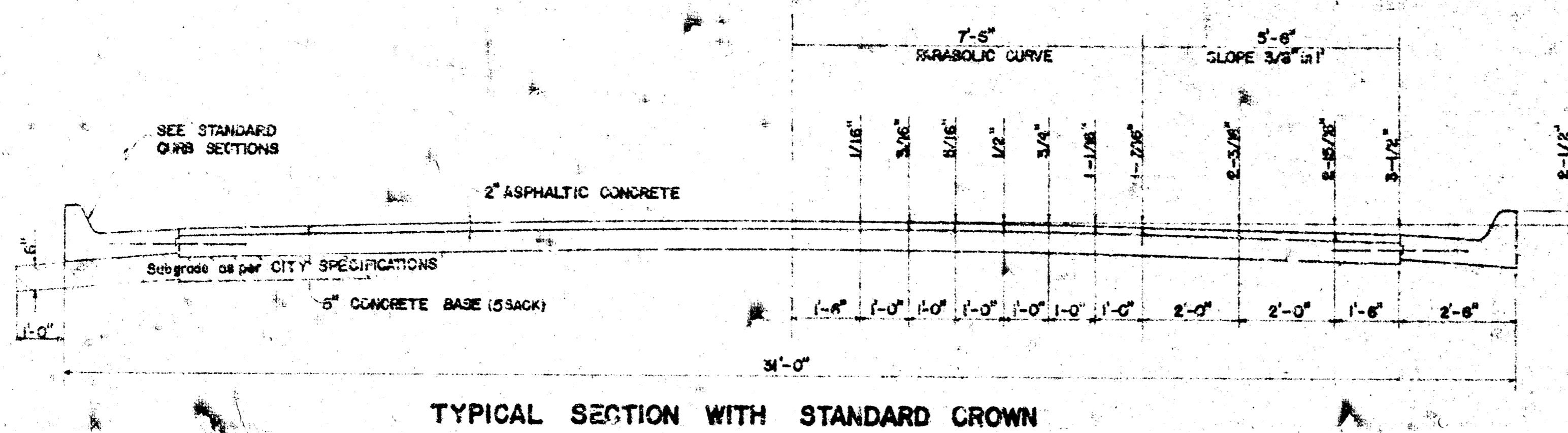
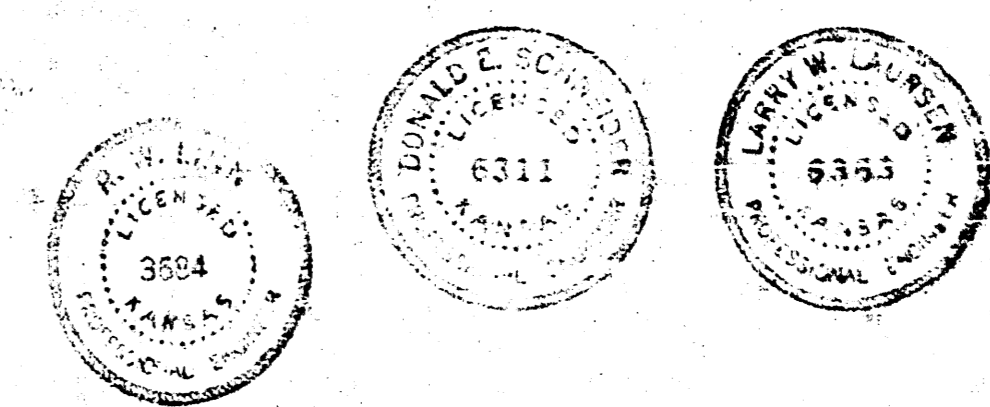


FIRST STREET
 145' WEST W.L. POPLAR AVE TO W.L. HILLSIDE AVE.
 TYPICAL SECTIONS of 30' ASPHALTIC CONCRETE PAVEMENT



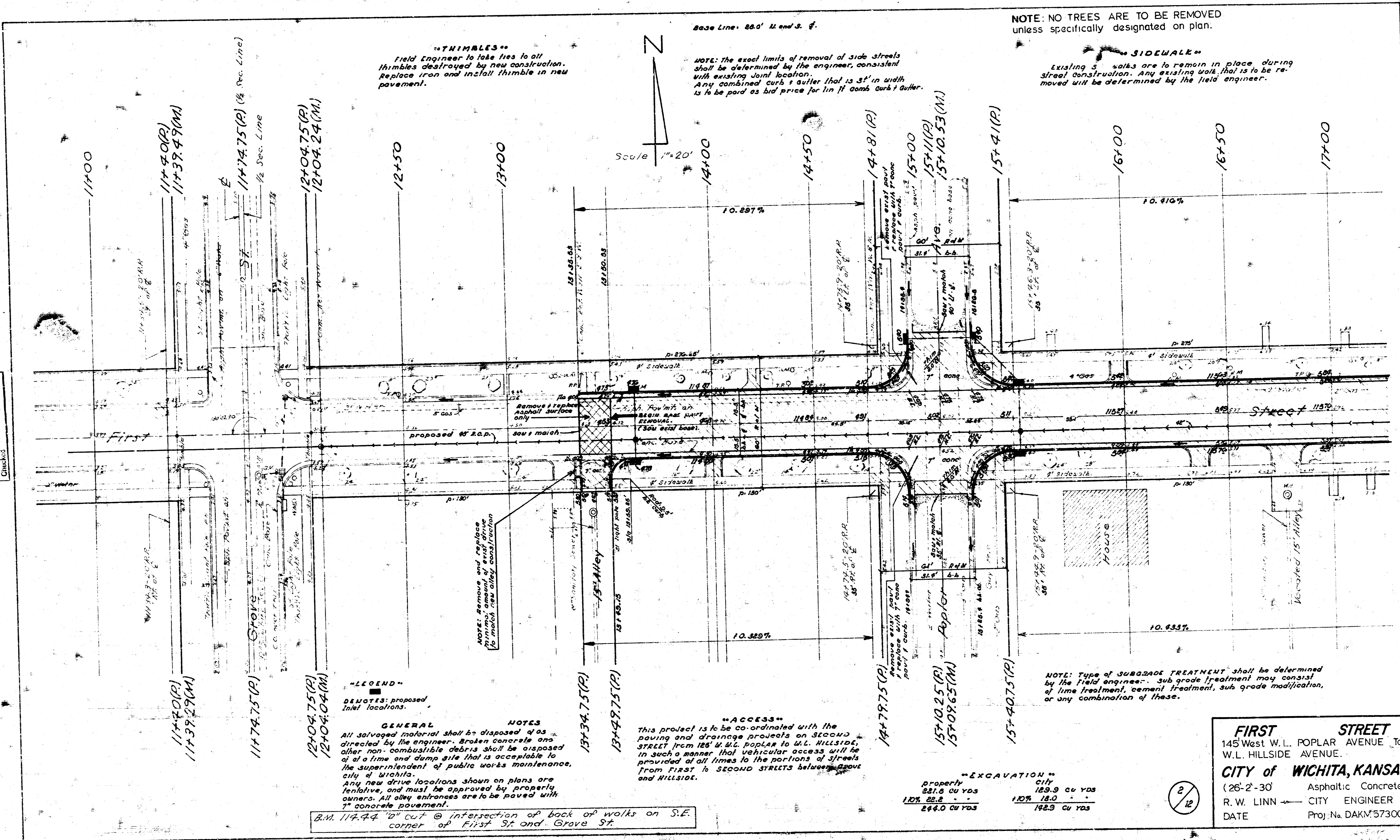
GENERAL NOTES

1. CONTRACTION JOINTS MAY BE CONSTRUCTED IN COMBINED CURB AND GUTTER BY SAWING WITH AN APPROVED CONCRETE SAW. THE SAW CUT SHALL EXTEND 2-1/2" BELOW THE SURFACE OF THE GUTTER AND CURB. SAWED CONTRACTION JOINTS SHALL HAVE A MAXIMUM SPACING OF 10' AND BE FILLED WITH A SPECIFIED JOINT FILLER, SUCH THAT THE JOINT IN THE GUTTER SECTION WILL BE COMPLETELY FILLED.



CITY OF WICHITA, KANSAS
 Department of Public Works - Engineering Division
 R.W. Lind, City Engineer
 Date: MAY 1973
 Project No. DAKM 573001

1/12



"THIMBLES"
 Field Engineer to take care to all thimbles destroyed by new construction. Replace iron and install thimble in new pavement.

NOTE: The exact limits of removal of side streets shall be determined by the engineer, consistent with existing joint location. Any combined curb & gutter that is 3' in width is to be paid as bid price for 1 in if curb curb & gutter.

NOTE: NO TREES ARE TO BE REMOVED unless specifically designated on plan.

"SIDEWALK"
 Existing sidewalks are to remain in place during street construction. Any existing walk that is to be removed will be determined by the field engineer.

"LEGEND"
 DEMOTES: proposed
 Intel locations.

GENERAL NOTES
 All salvaged material shall be disposed of as directed by the engineer. Broken concrete and other non-combustible debris shall be disposed of at a time and dump site that is acceptable to the superintendent of public works maintenance, city of Wichita.
 Any new drive locations shown on plans are tentative, and must be approved by property owners. All alley entrances are to be paved with 3" concrete pavement.

"ACCESS"
 This project is to be co-ordinated with the paving and drainage projects on SECOND STREET from 185th to 191st. POPLAR to W.L. HILLSIDE, in such a manner that vehicular access will be provided at all times to the portions of streets from First to Second streets between Grove and Hillside.

NOTE: Type of SUBGRADE TREATMENT shall be determined by the field engineer. Sub grade treatment may consist of lime treatment, cement treatment, sub grade modification, or any combination of these.

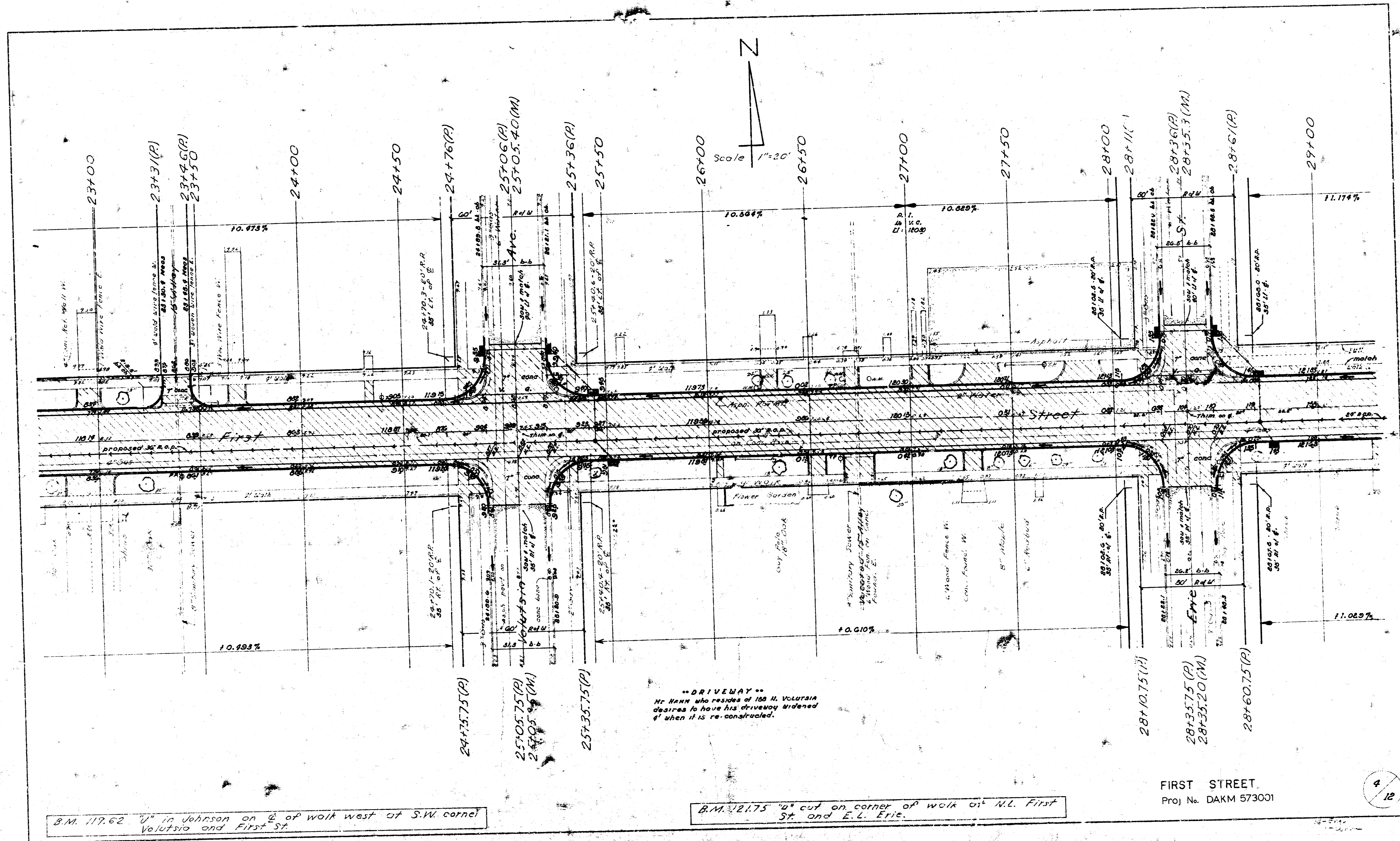
"EXCAVATION"

Property	City
287.6 cu yds	189.9 cu yds
120.8 cu yds	18.0 cu yds
246.0 cu yds	148.9 cu yds

2/12

FIRST STREET
 145 West W.L. POPLAR AVENUE To
 W.L. HILLSIDE AVENUE
CITY OF WICHITA, KANSAS
 (26-2-30) Asphaltic Concrete)
 R. W. LINN — CITY ENGINEER
 DATE _____ Proj. No. DAKV 573001

B.M. 114.44 10" cut @ intersection of back of walks on S.E. corner of First St and Grove St



B.M. 119.62 4" in Johnson on E of walk west at S.W. corner Volusia and First St.

B.M. 121.75 4" cut on corner of walk at N.L. First St. and E.L. Erie.

FIRST STREET
Proj. No. DAKM 573001

4/12

