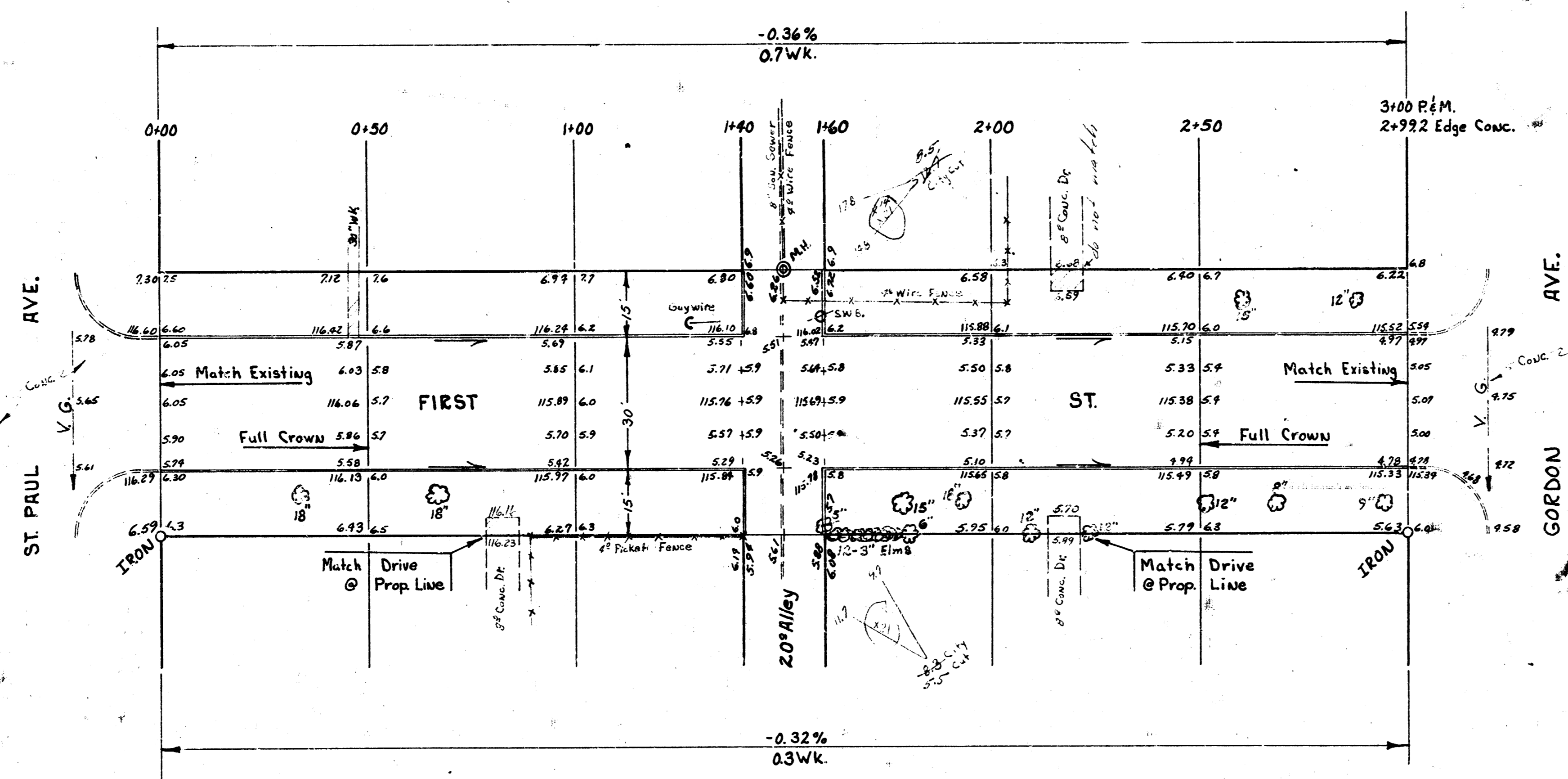
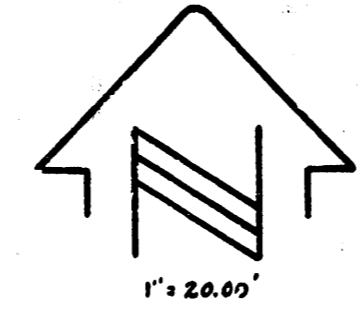


B.M. 116.12 "G" in Globe No. and E. cb. S.E. cor. St Paul & First.
 B.M. 115.44 "G" in Globe E. and cb. ret. N.E. cor. Gordon & First.



EXCAVATION TOTALS

CITY	PROP	1+00	1+20	1+40	1+60	1+80	2+00	2+20	2+40	2+60	2+80	3+00
17.9 C	17.2 C	17.9 C	17.2 C	36.2 C	34.3 C	37.9 C	36.3 C	35.2 C	35.2 C	35.2 C	35.2 C	35.2 C
33.9 Cut	33.9 Cut	33.9 Cut	33.9 Cut	47.8 Cut	47.8 Cut	47.8 Cut	47.8 Cut	47.8 Cut	47.8 Cut	47.8 Cut	47.8 Cut	47.8 Cut

FIRST ST.
 E.L. ST PAUL & WL GORDON
 30' CONC. & CB.
 CITY OF WICHITA, KANSAS
 B.E. SMITH CITY ENGINEER
 DATE: NOV. 1958 PROJ. NO. C18-147

