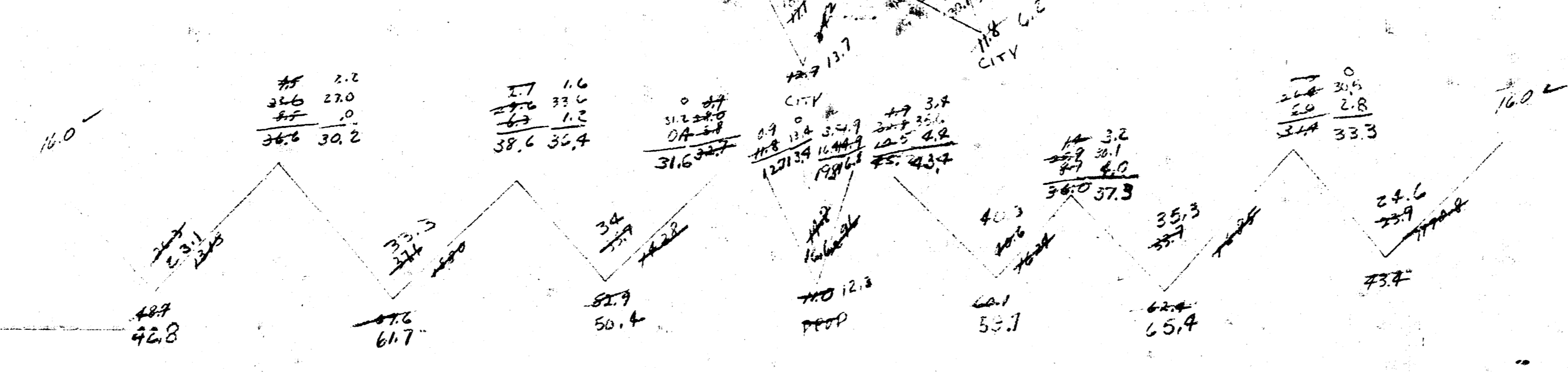
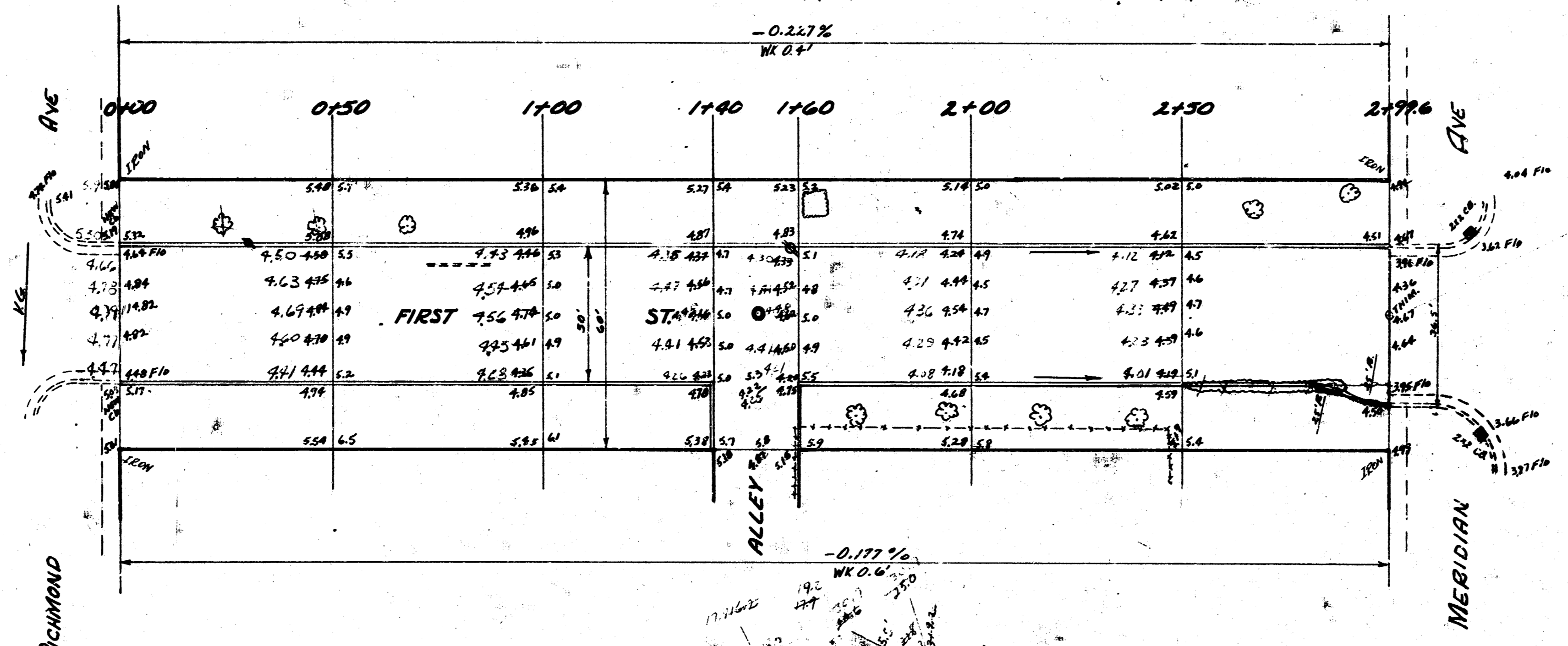


B.M. 11644 SE Cor. Conk. Strip S. Side. No. 201 N. Richmond

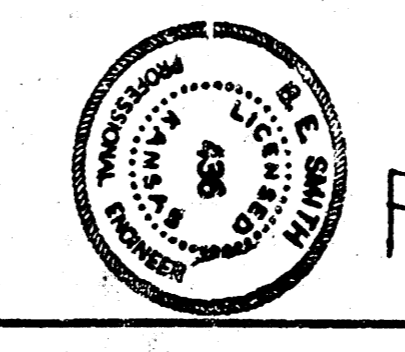
STA ON E.

781P CITY  
-48.1  
+102.538  
3827

- 0+00 6" TREE 10' W. OF C.
- 0+00 6" TREE 10' E. OF C.
- 0+05 8" TREE 10' W. OF C.
- 0+05 8" TREE 10' E. OF C.
- 0+10 8" TREE 10' W. OF C.
- 0+10 8" TREE 10' E. OF C.
- 1+00 6" TREE 10' W. OF C.
- 1+00 6" TREE 10' E. OF C.
- 1+05 8" TREE 10' W. OF C.
- 1+05 8" TREE 10' E. OF C.
- 1+10 8" TREE 10' W. OF C.
- 1+10 8" TREE 10' E. OF C.
- 1+15 8" TREE 10' W. OF C.
- 1+15 8" TREE 10' E. OF C.
- 1+20 8" TREE 10' W. OF C.
- 1+20 8" TREE 10' E. OF C.
- 1+25 8" TREE 10' W. OF C.
- 1+25 8" TREE 10' E. OF C.
- 1+30 8" TREE 10' W. OF C.
- 1+30 8" TREE 10' E. OF C.
- 1+35 8" TREE 10' W. OF C.
- 1+35 8" TREE 10' E. OF C.
- 1+40 8" TREE 10' W. OF C.
- 1+40 8" TREE 10' E. OF C.
- 1+45 8" TREE 10' W. OF C.
- 1+45 8" TREE 10' E. OF C.
- 1+50 8" TREE 10' W. OF C.
- 1+50 8" TREE 10' E. OF C.
- 1+55 8" TREE 10' W. OF C.
- 1+55 8" TREE 10' E. OF C.
- 1+60 8" TREE 10' W. OF C.
- 1+60 8" TREE 10' E. OF C.
- 1+65 8" TREE 10' W. OF C.
- 1+65 8" TREE 10' E. OF C.
- 1+70 8" TREE 10' W. OF C.
- 1+70 8" TREE 10' E. OF C.
- 1+75 8" TREE 10' W. OF C.
- 1+75 8" TREE 10' E. OF C.
- 1+80 8" TREE 10' W. OF C.
- 1+80 8" TREE 10' E. OF C.
- 1+85 8" TREE 10' W. OF C.
- 1+85 8" TREE 10' E. OF C.
- 1+90 8" TREE 10' W. OF C.
- 1+90 8" TREE 10' E. OF C.
- 1+95 8" TREE 10' W. OF C.
- 1+95 8" TREE 10' E. OF C.
- 2+00 8" TREE 10' W. OF C.
- 2+00 8" TREE 10' E. OF C.
- 2+05 8" TREE 10' W. OF C.
- 2+05 8" TREE 10' E. OF C.
- 2+10 8" TREE 10' W. OF C.
- 2+10 8" TREE 10' E. OF C.
- 2+15 8" TREE 10' W. OF C.
- 2+15 8" TREE 10' E. OF C.
- 2+20 8" TREE 10' W. OF C.
- 2+20 8" TREE 10' E. OF C.
- 2+25 8" TREE 10' W. OF C.
- 2+25 8" TREE 10' E. OF C.
- 2+30 8" TREE 10' W. OF C.
- 2+30 8" TREE 10' E. OF C.
- 2+35 8" TREE 10' W. OF C.
- 2+35 8" TREE 10' E. OF C.
- 2+40 8" TREE 10' W. OF C.
- 2+40 8" TREE 10' E. OF C.
- 2+45 8" TREE 10' W. OF C.
- 2+45 8" TREE 10' E. OF C.
- 2+50 8" TREE 10' W. OF C.
- 2+50 8" TREE 10' E. OF C.
- 2+55 8" TREE 10' W. OF C.
- 2+55 8" TREE 10' E. OF C.
- 2+60 8" TREE 10' W. OF C.
- 2+60 8" TREE 10' E. OF C.
- 2+65 8" TREE 10' W. OF C.
- 2+65 8" TREE 10' E. OF C.
- 2+70 8" TREE 10' W. OF C.
- 2+70 8" TREE 10' E. OF C.
- 2+75 8" TREE 10' W. OF C.
- 2+75 8" TREE 10' E. OF C.
- 2+80 8" TREE 10' W. OF C.
- 2+80 8" TREE 10' E. OF C.
- 2+85 8" TREE 10' W. OF C.
- 2+85 8" TREE 10' E. OF C.
- 2+90 8" TREE 10' W. OF C.
- 2+90 8" TREE 10' E. OF C.
- 2+95 8" TREE 10' W. OF C.
- 2+95 8" TREE 10' E. OF C.
- 3+00 8" TREE 10' W. OF C.
- 3+00 8" TREE 10' E. OF C.



Survey done by B. W. G. Plan and checked by J. T. F.



1"=20'

1<sup>ST</sup> ST.  
E. RICHMOND TO W. MERIDIAN  
30' CONC. & CB

CITY OF WICHITA, KANSAS  
B.E. SMITH CITY ENGINEER  
Feb. 2, 1953 Proj. No. CR-260