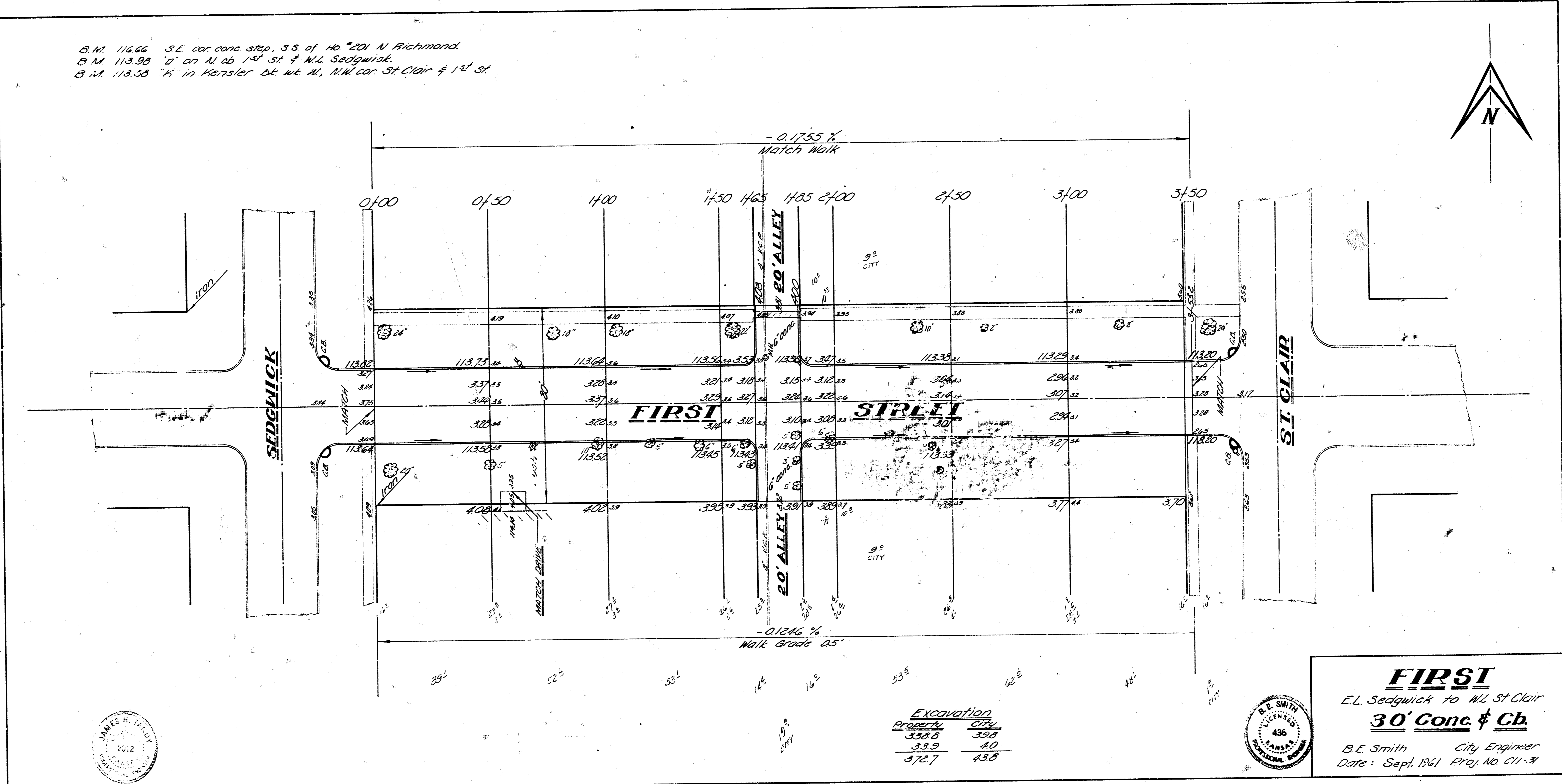
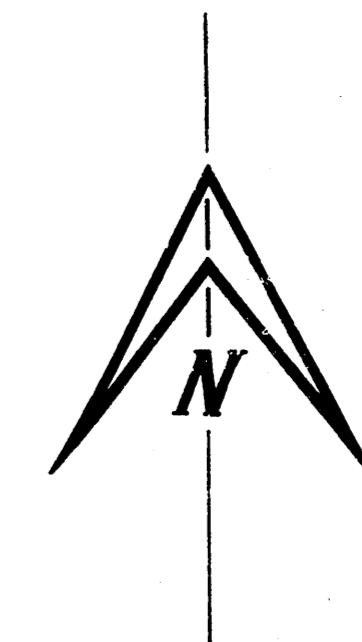


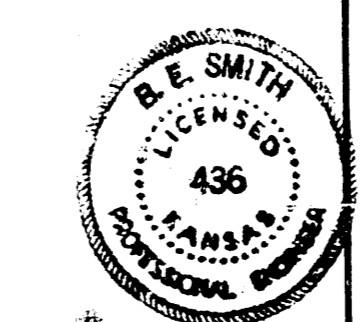
B.M. 116.66 S.E. cor conc. step, S.S. of Ho. 201 N. Richmond.  
 B.M. 113.95 "D" on N. ab. 1<sup>st</sup> St. & W.L. Sedgwick.  
 B.M. 113.58 "K" in Karsier. be. W.L. N. N.W. cor. St. Clair & 1<sup>st</sup> St.



Survey CIVIL - BK. 20  
 P. 1 & 2  
 Sheet 3 of 3



Excavation	
Property	City
332.0	35.8
33.9	4.0
<u>372.7</u>	<u>43.8</u>



**FIRST**  
 E.L. Sedgwick to W.L. St. Clair  
**30' Conc. & Cb.**  
 B.E. Smith City Engineer  
 Date: Sept, 1961 Proj. No. C11-34

10 11 12