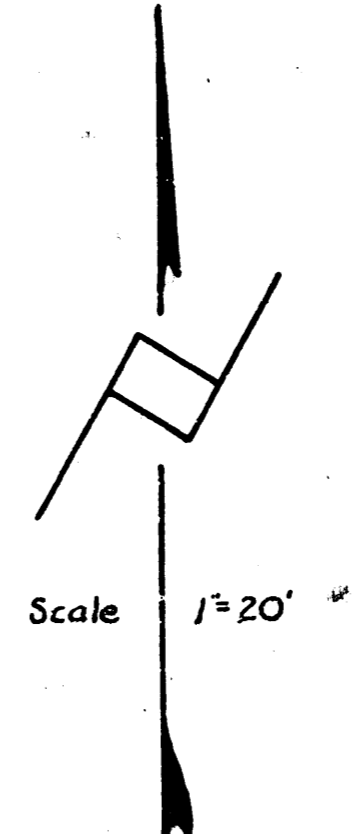
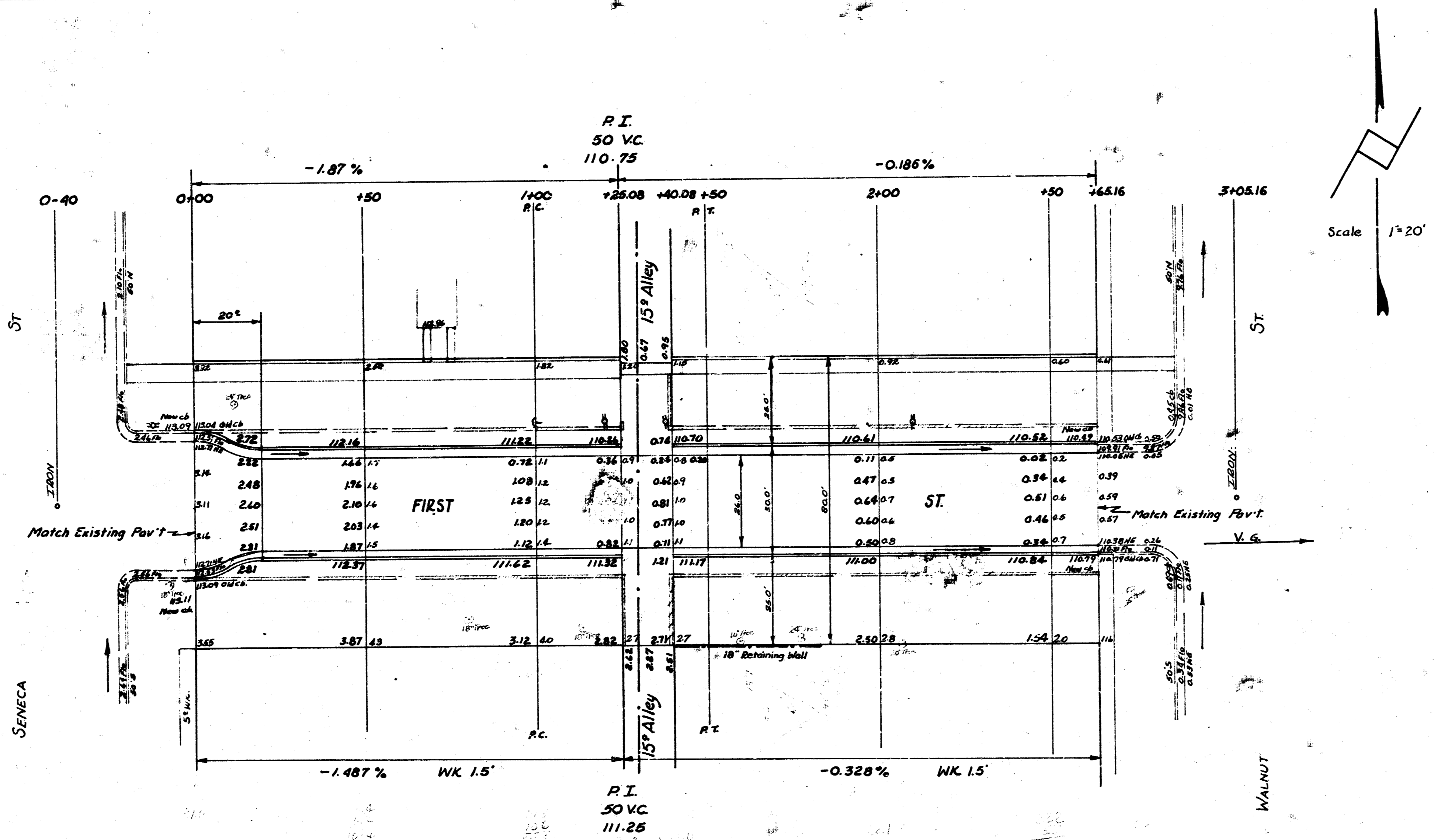


BM = 113.68 SW cor. lot area on W side H₂ 302 Seneca
 BM = 109.70 Std. SW cor. Seneca & 2nd



NOTICE TO CONTRACTOR:-
 All existing separate cb is to be removed.
 Existing cb is 1/2" x 0.4". Match existing
 sidewalk on N side of street.

FIRST ST.
 EL Seneca WL Walnut
 26-2-30 AC.
 CITY OF WICHITA, KANSAS
 B.E. SMITH CITY ENGINEER
 APRIL 1956 PROJ. NO. C15-251



3 14 5 15