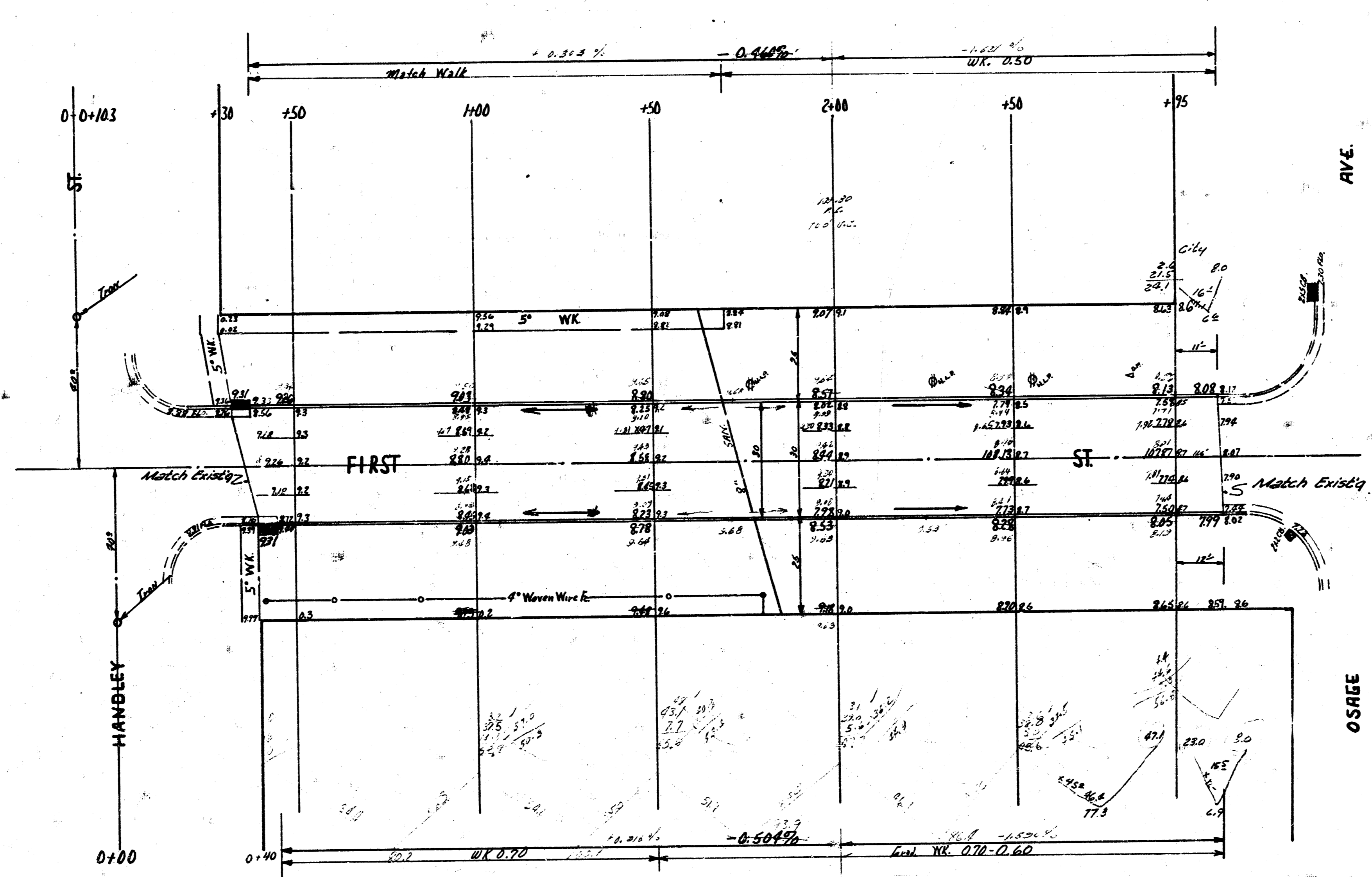


B.M. 170.78 "X" IN KITCHIE TOP OF CO. S.S. 1ST ST. 75 W. OF W.L. WALNUT
 BASELINE 75 ON E.

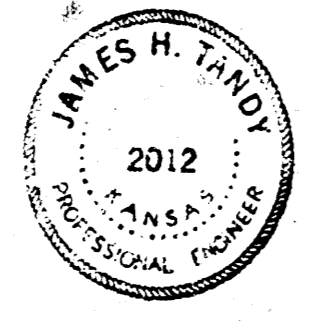
NOTE: SEAM POINT TO BE MARKED IN THE LINE



TOTAL EXCRY.	
PROP.	CITY
448.8	66
44.5	73
493.3	

177.0 30' CONC' - PROP.

FIRST ST
 W.L. OSAGE E.L. HANDLEY
 30' CONC'CB.
 CITY OF WICHITA, KAN.
 B.E. SMITH CITY ENGINEER
 DATE Aug. 3, 1987 PROJ. NO. C-19-87



Survey Plans
 Plan Engineer
 Checked by