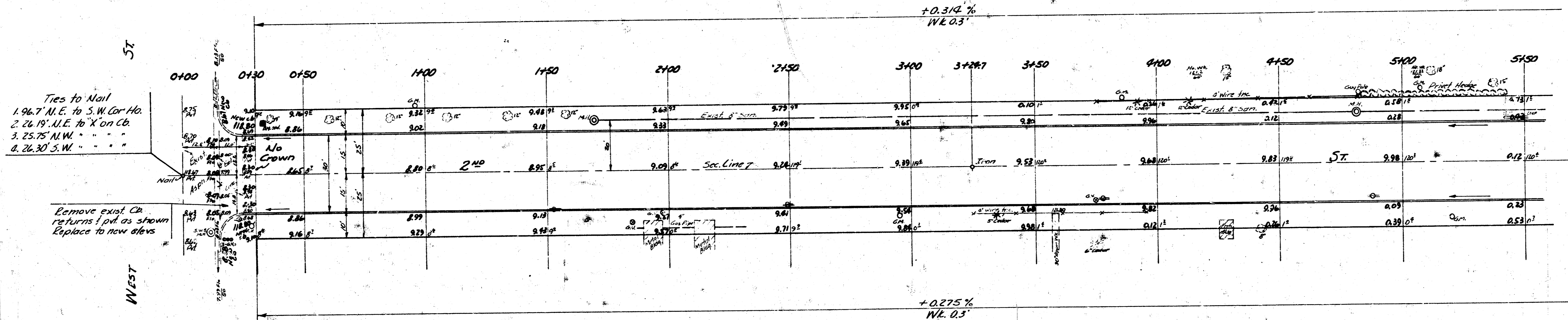


Q.M. 119.73 Standard N.E. 2nd & West
 Chaining & ec. line

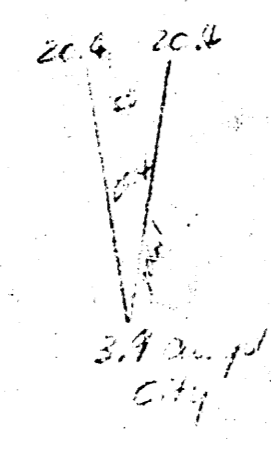
NOTE: Use only B.M.s on these plans

Grand Total Fill		Grand Total Excav.	
Prop.	City	Prop.	City
21.3	11.0	647.7	54.5
+10% 2.8	+10% 1.2	+4% 26.8	23.7
Total 30.3 cu yds.	Total 12.0 cu yds.	Total 662.5 cu yds.	78.2 cu yds.

8.1%
 0.4%
 0.2%
 0.1%



WEST

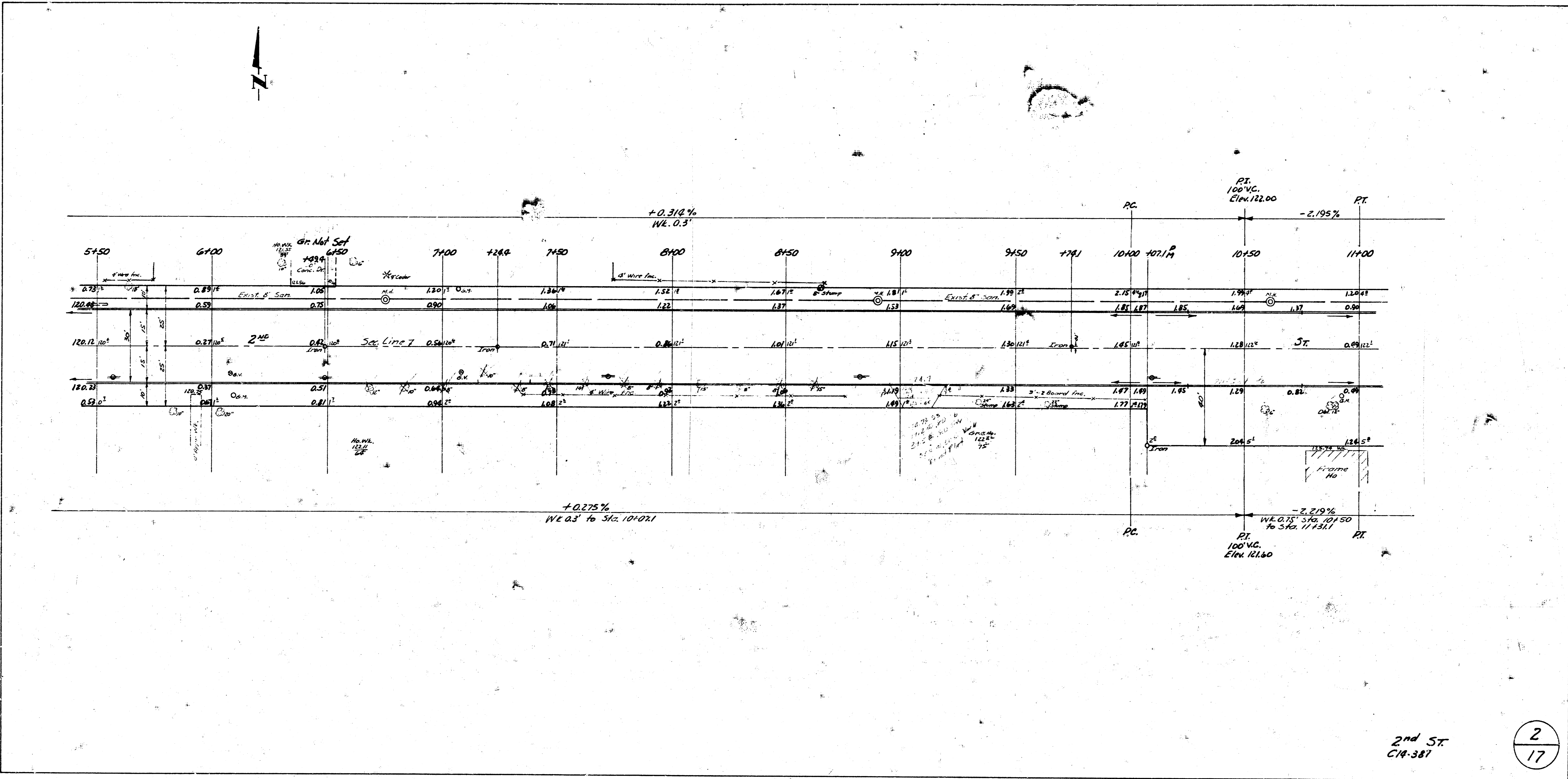


NOTE TO FIELD ENGINEER & CONTRACTOR:
 Entrance pipes are to be disposed of as directed by City Dirt Checker.

1
17



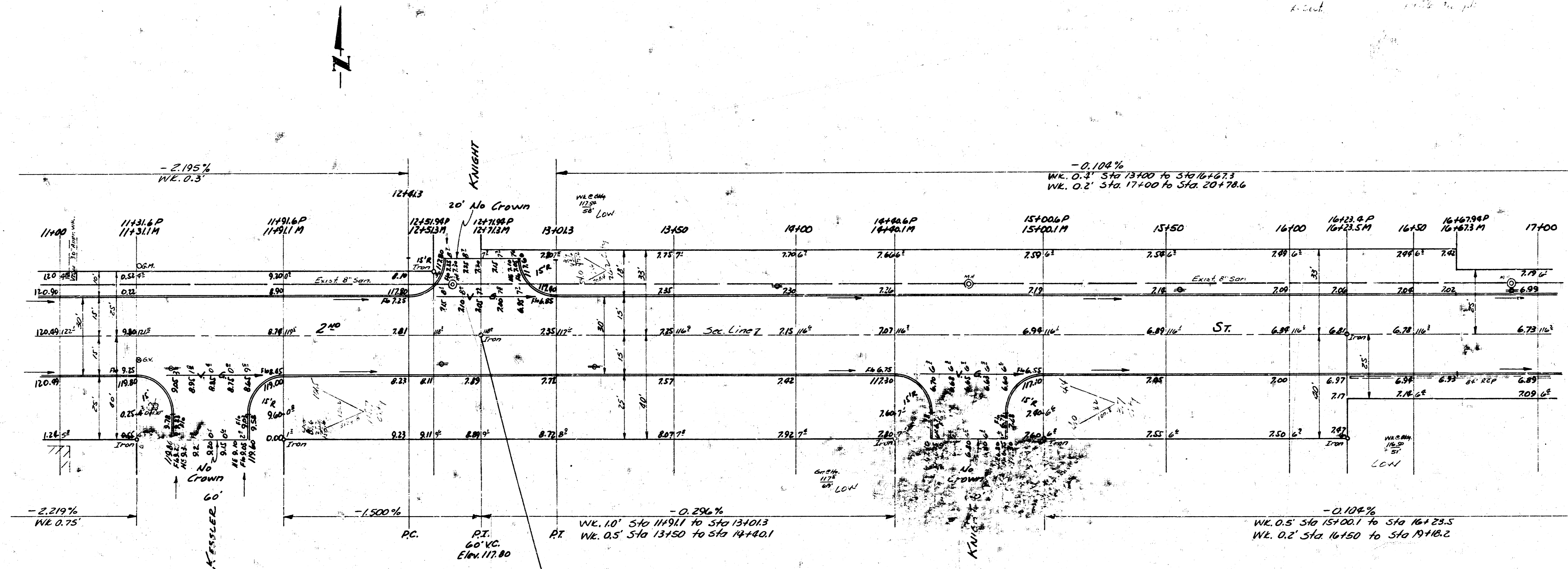
2nd St.
 E.L. West St. to W.L. St. P.
 30' CONC. & CS.
 CITY OF WICHITA, KANSAS
 B.E. SMITH CITY ENGINEER
 APRIL 1936 PROJ. 16. C14-387



2nd ST
C14-381

BM 118.03 Iron EL Knight N. 1 on & Sec. Line 2nd

Prop
E. 2nd St
1775' N. 1st St

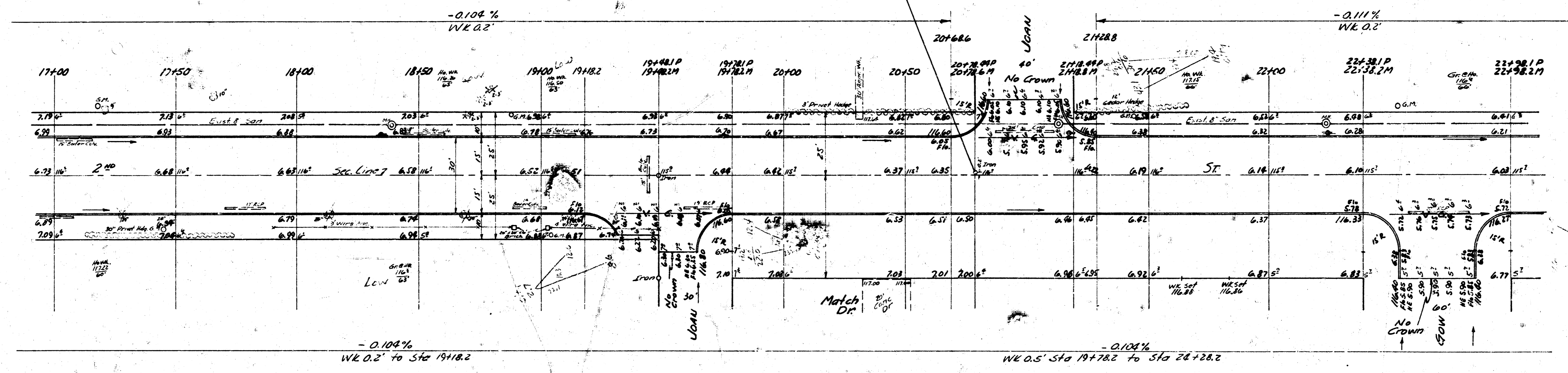


- Ties to Iron
1. 73.15' S.E. to #1d 3 Nails W.S. of Tel. Pole
 2. 70.57' N.E. to S.W. Cor. Frame Bldg.
 3. 23.53' N.W. to 2 Nails in S.S. Tel. Pole
 4. 31.90' N.W. to Prop. Iron

2nd St
C14-387



Ties to Iron?
1. 96.0 N.W. to N.E. Cor. No.
2. 55.66' N.E. to Mid 3 No. 16
0.2' S. to E. Sec. Line



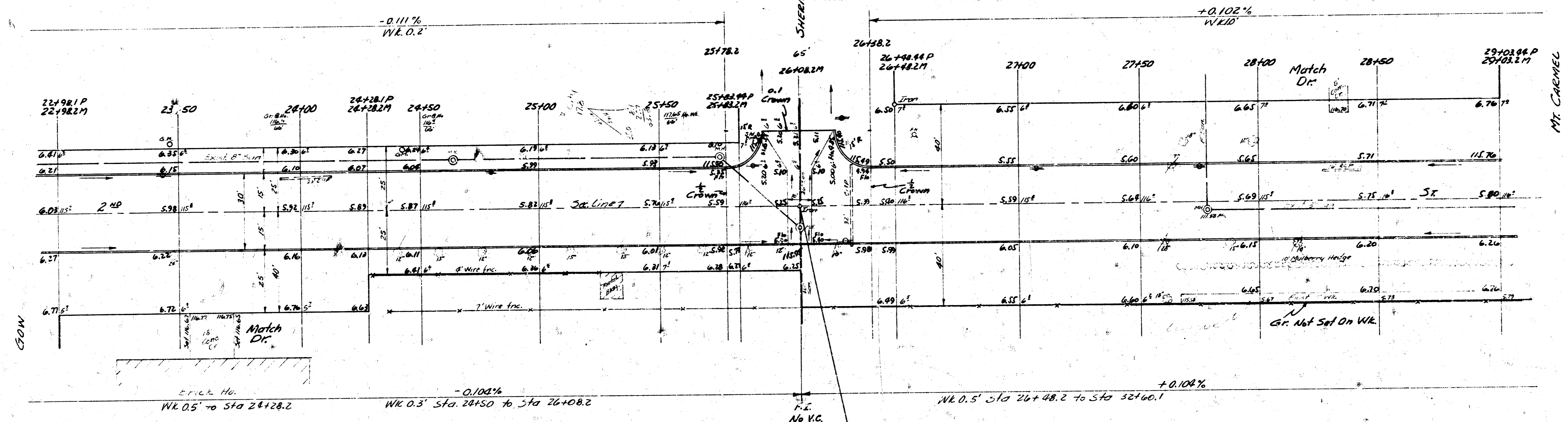
2nd ST
C14-307

4
17

Standard NW Cor. Sheridan & 2nd



NOTE: Drainage ditch to be cut on E.S. Sheridan from N.L. 2nd St. to exist. Catch Basin, approx. 685' N. of N.L. 2nd



SDW

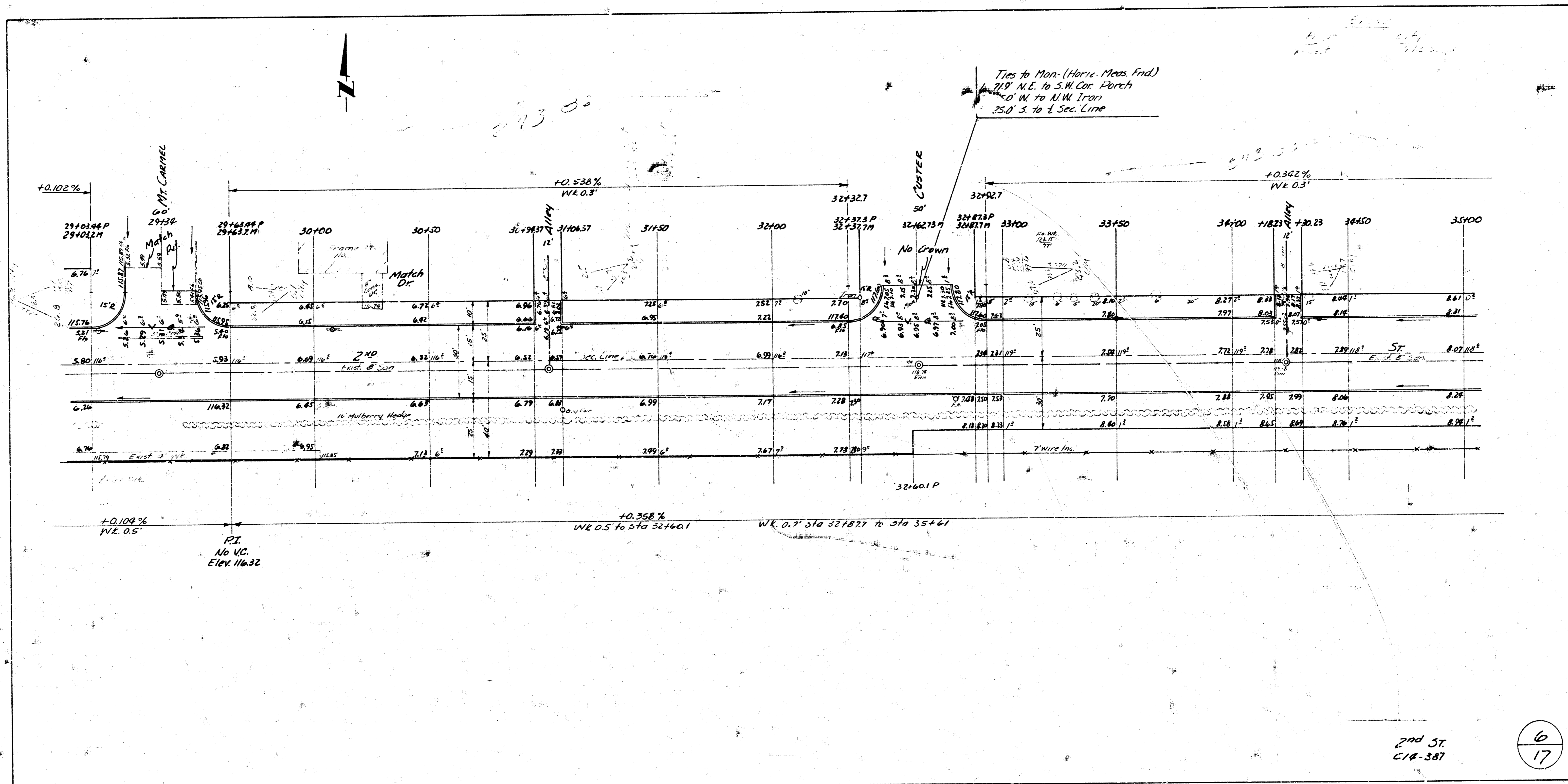
MT. CARMEL

F.I. No U.C. Elev. 115.95

Ties to Iron
 1. 30.00' N.W. to C. of Standard B.M.
 2. 39.00' N.E. to Nail E.S. Tel. Pole
 3. 58.8' E.N.E.

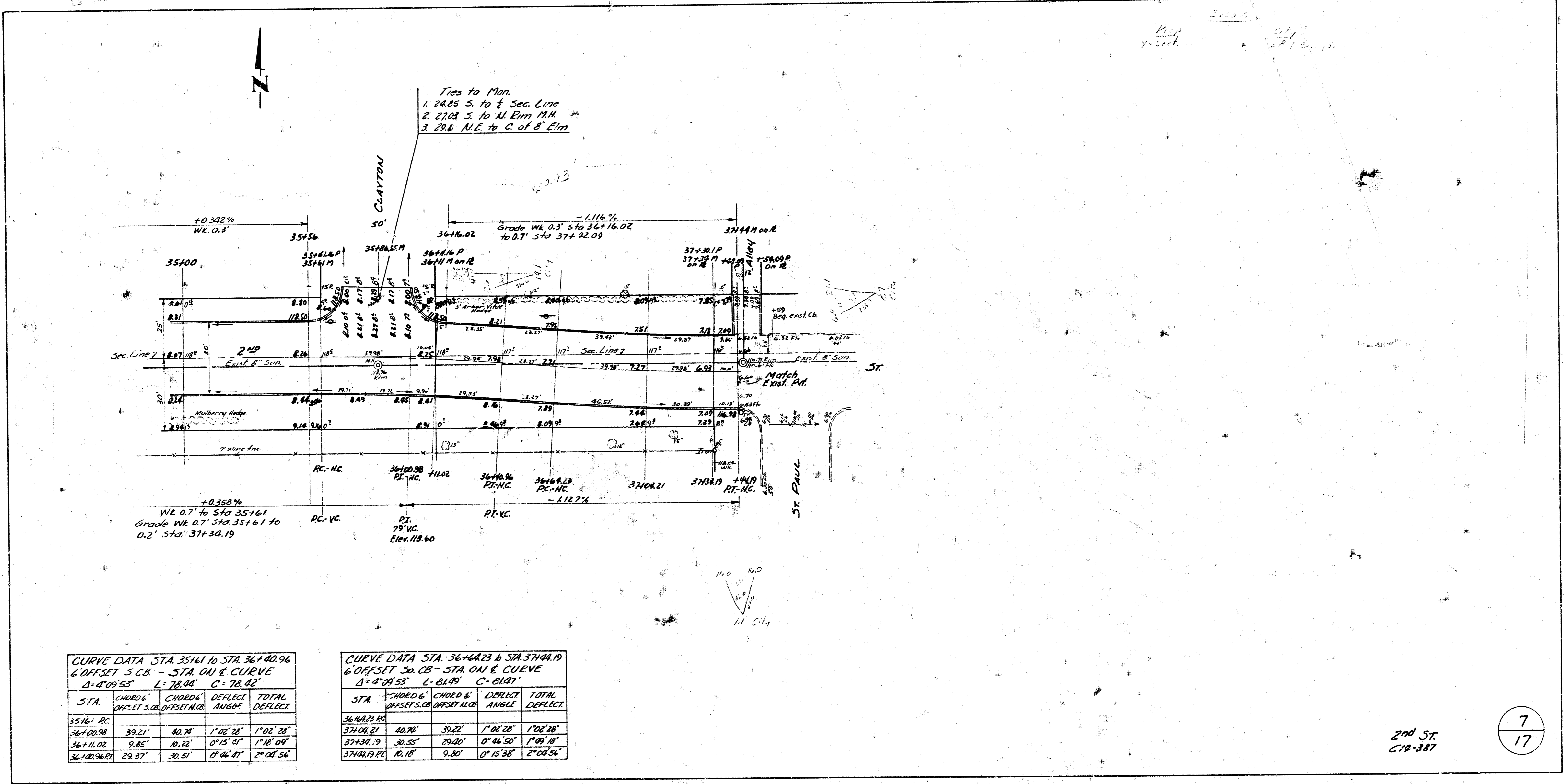
2nd St
C14-387

5
17



2nd ST
C/A-381

6
17



CURVE DATA STA. 35+61 TO STA. 36+40.96
 6' OFFSET S. CB - STA ON & CURVE
 Δ = 4°09'53" L = 78.98 C = 78.92

STA.	CHORD & OFFSET S. CB	CHORD & OFFSET N. CB	DEFLECT ANGLE	TOTAL DEFLECT.
35+61 P.C.	39.21	40.78	1°02'28"	1°02'28"
36+16.02	9.85	10.22	0°15'31"	1°18'09"
36+40.96 P.T.	29.37	30.51	0°46'47"	2°05'56"

CURVE DATA STA. 36+42.23 TO STA. 37+44.19
 6' OFFSET S. CB - STA ON & CURVE
 Δ = 4°09'53" L = 81.09 C = 81.01

STA.	CHORD & OFFSET S. CB	CHORD & OFFSET N. CB	DEFLECT ANGLE	TOTAL DEFLECT.
36+42.23 P.C.	40.78	39.21	1°02'28"	1°02'28"
37+11.02	30.55	29.37	0°46'50"	1°49'18"
37+44.19 P.T.	10.18	9.85	0°15'38"	2°05'56"

2nd ST.
 C18-387