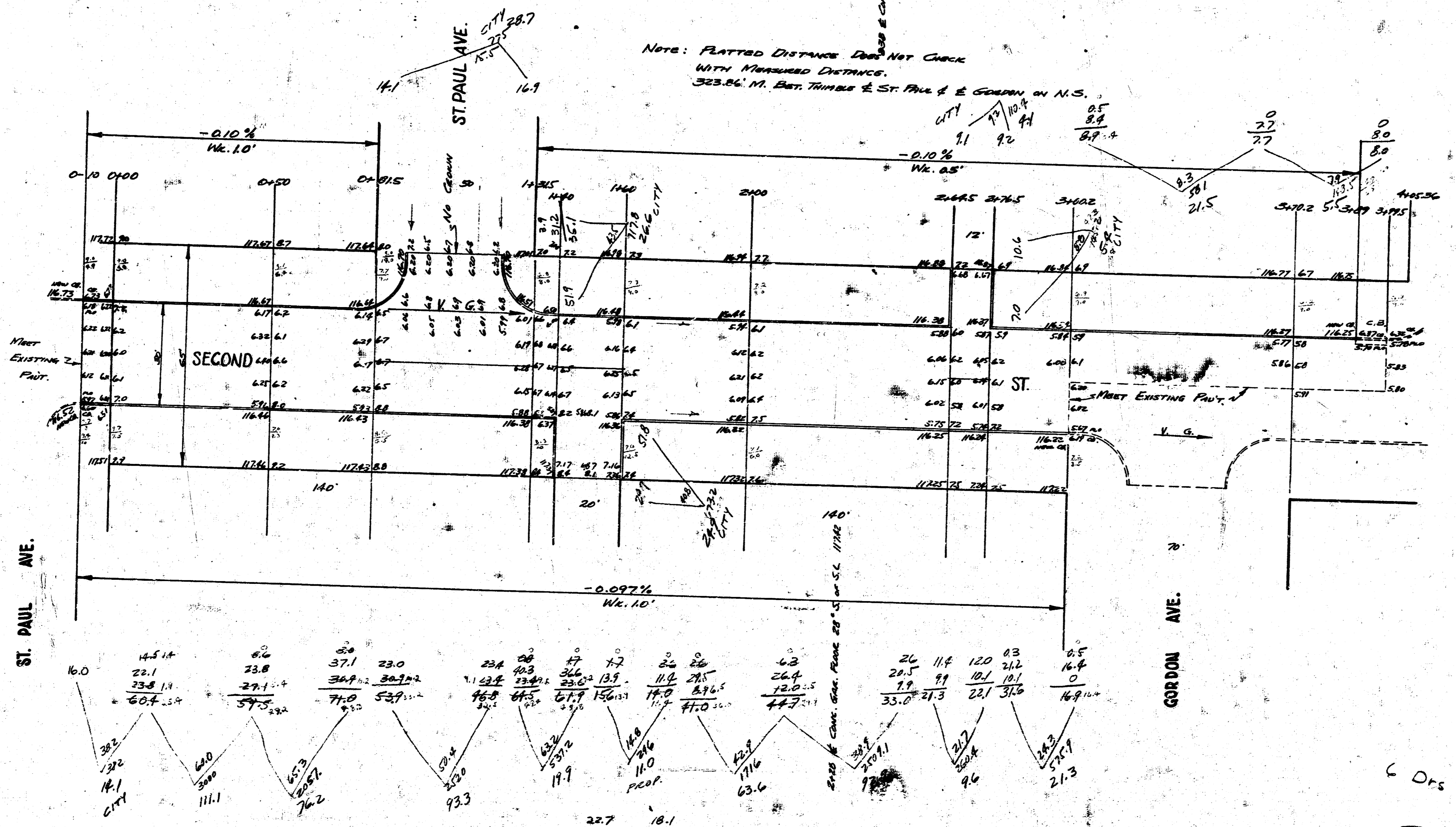


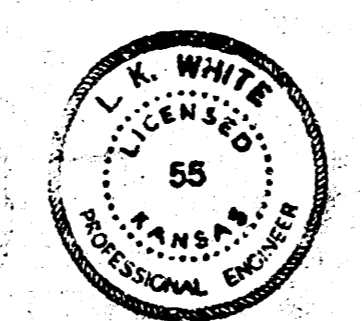
B.M. 11789 S.W. Cor. Calk. Patch No. 388 No. Garden
 B.M. 11668 "G" in Ground E.S. St. Paul So. - 1° So. of So. end Rad. S.E. Cor. St. Paul & 2nd

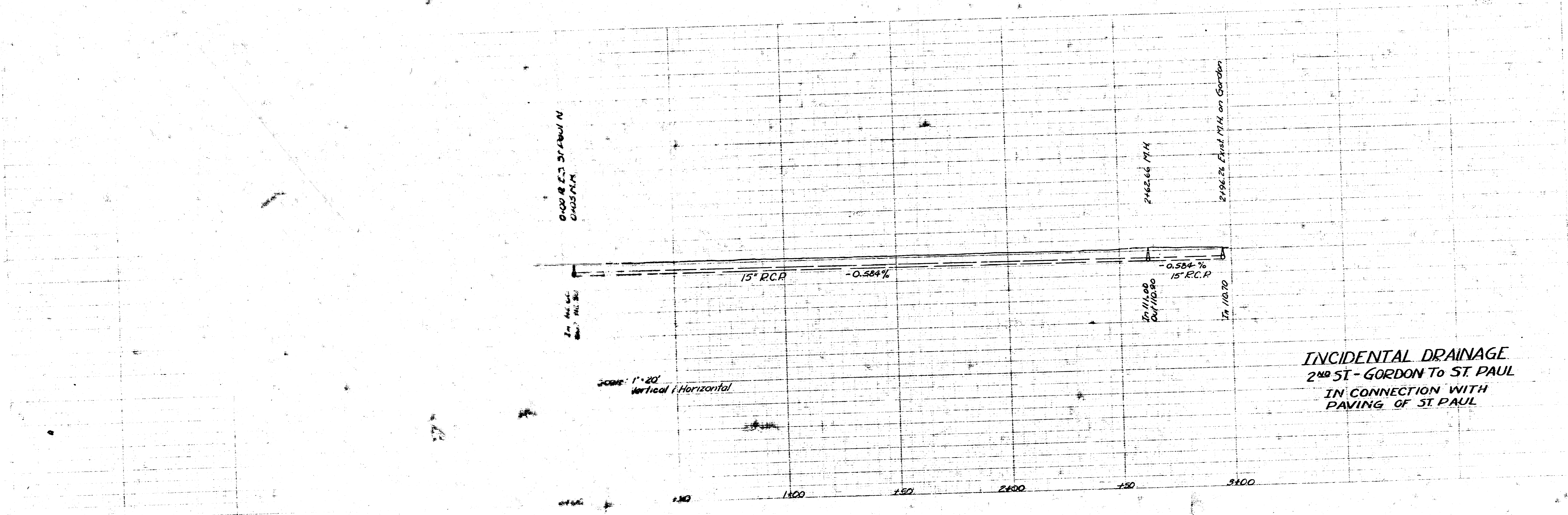
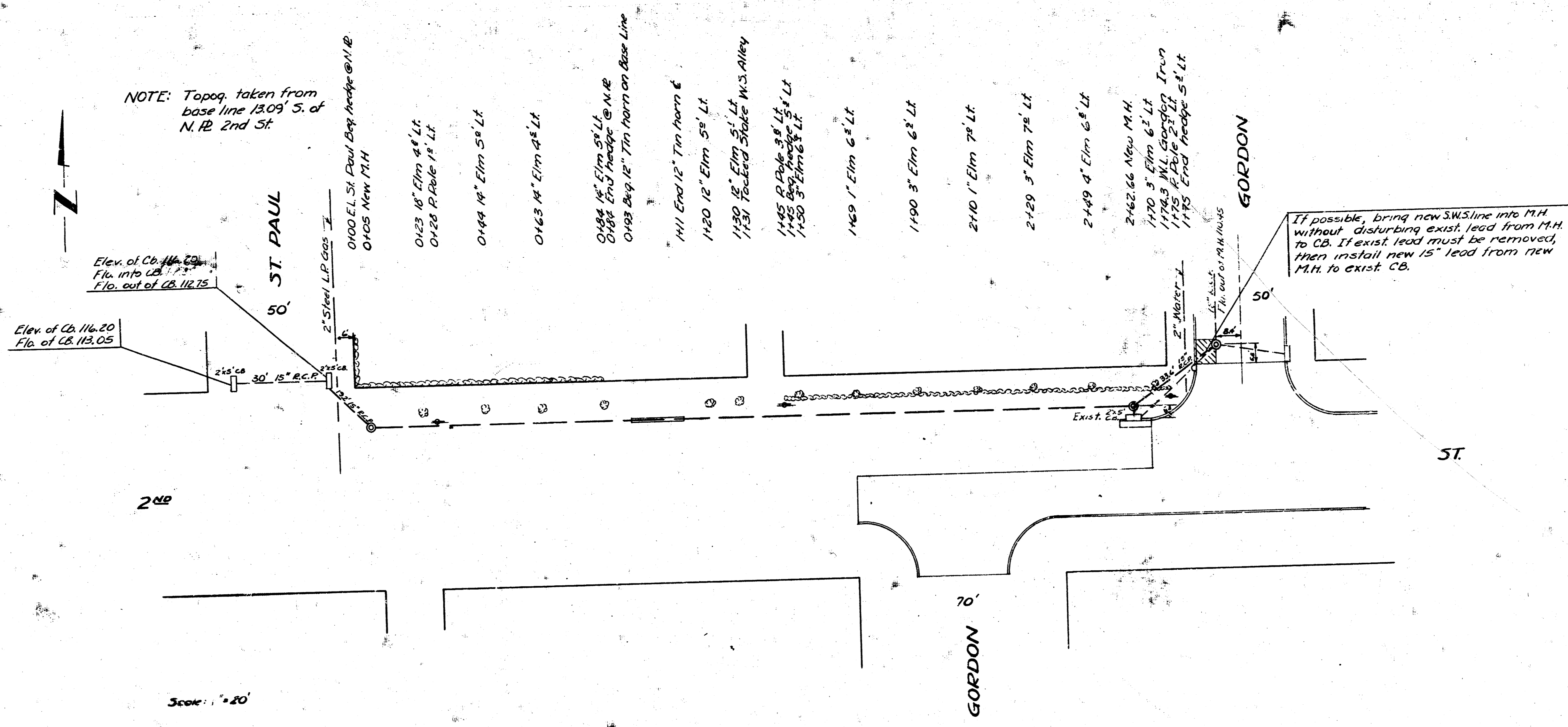
NOTE: PLATTED DISTANCE DOES NOT CORRECT
 WITH MEASURED DISTANCES.
 323.66' N. B.M. THURSDAY & ST. PAUL & E. GARDEN ON N.S.

PROP.	CITY
111.1	28.7
76.2	20.6
93.3	28.9
14.9	15.1
11.0	4.1
6.4	5.8
92.9	104.3
7.6	410.6
21.3	115.3 ON YDS.
21.5	
55	
525.9	
410.6	
578.5 ON YDS.	



SECOND STREET
 E. L. St. Paul South to W. L. Gordon North
 30' Conc. & cts.
 CITY OF WICHITA, KANS.
 L. K. WHITE, CITY ENGINEER
 DEC. 1950, PROJ. NO. CO-166

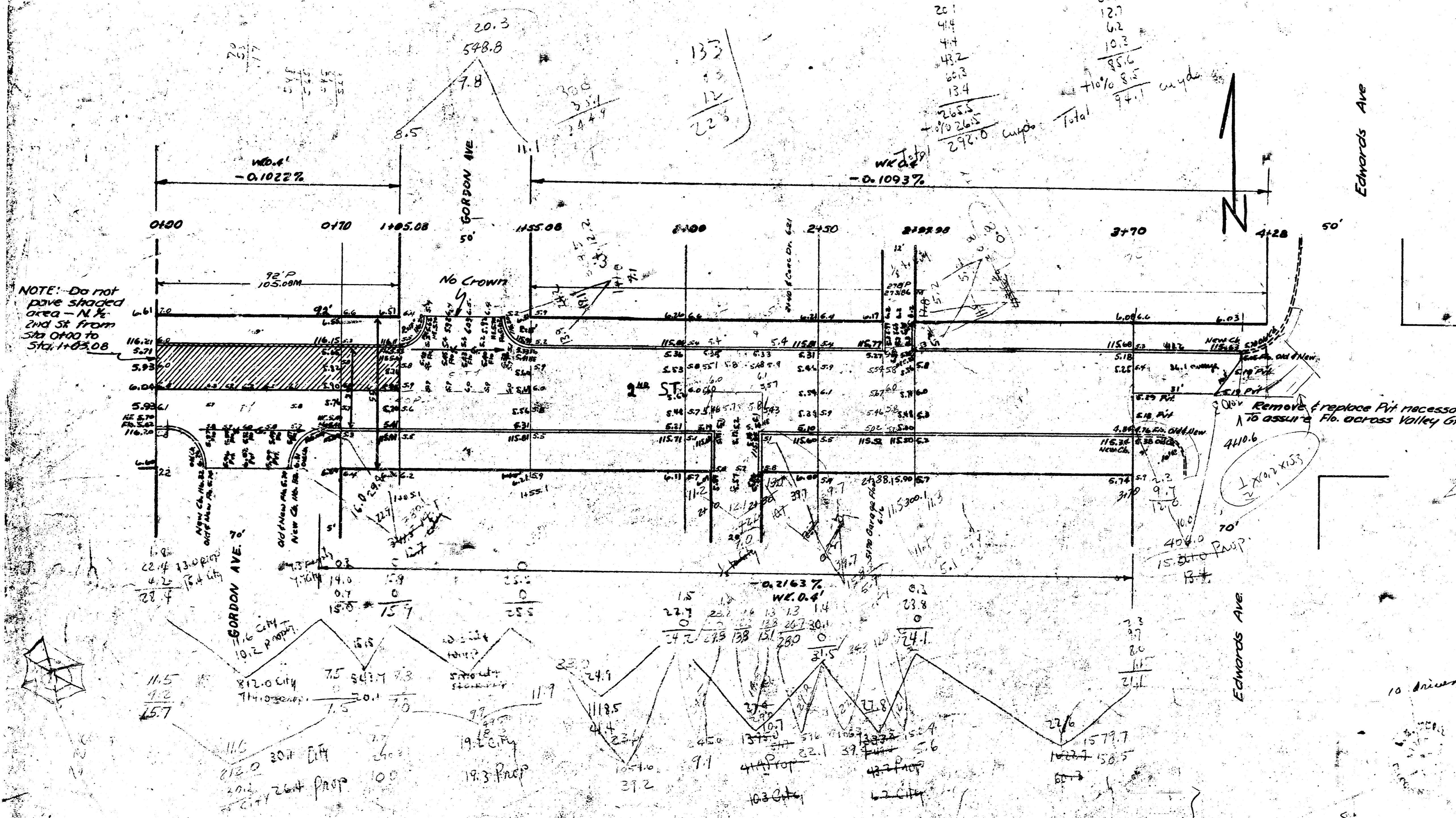




B.M. 115.71 Iron in thimble & Edwards N.S. 2nd St.

Property City

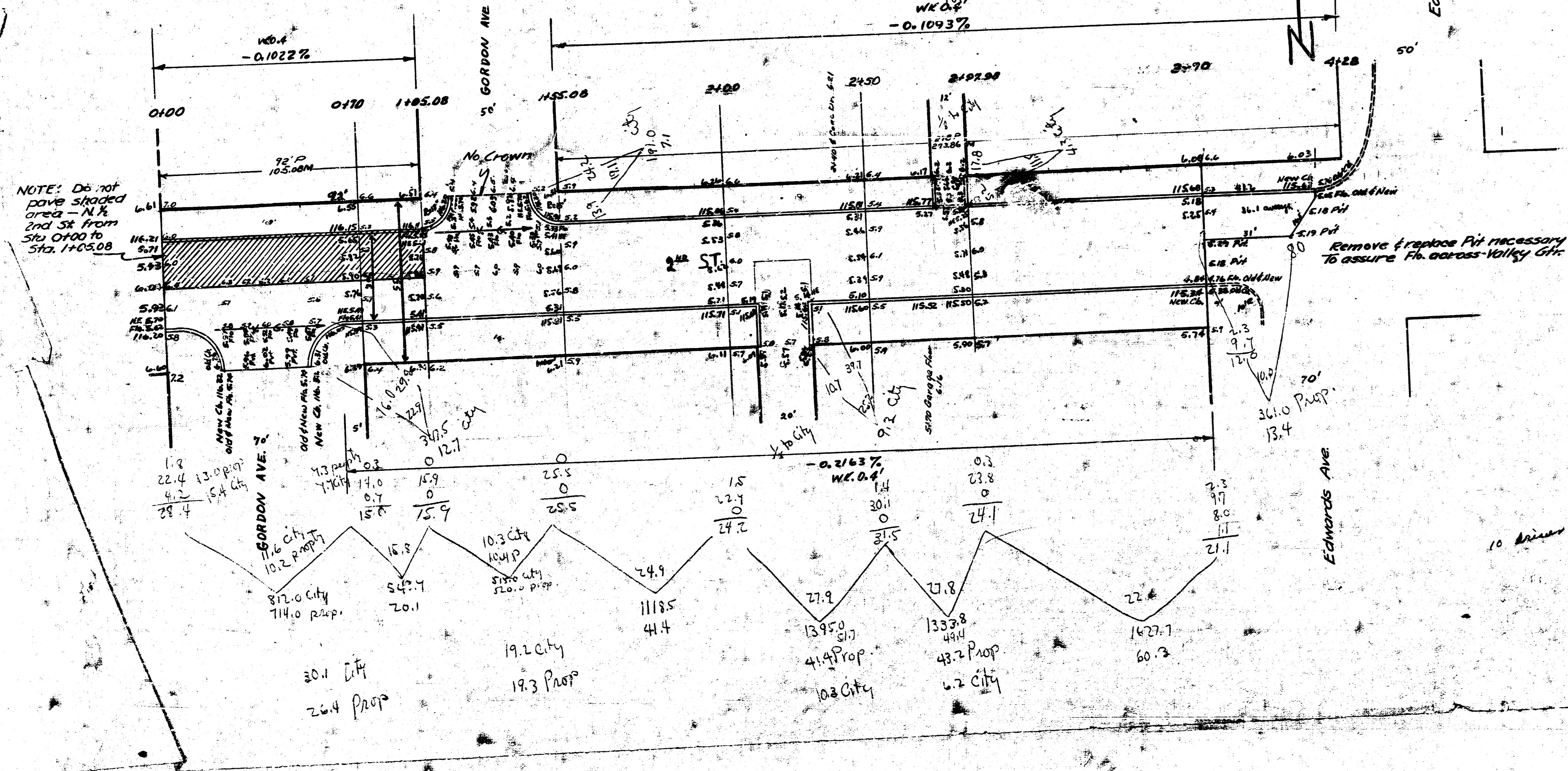
26.4	7.1
19.2	19.2
20.1	30.1
4.4	12.7
4.4	6.2
4.2	10.3
13.4	85.6
205.5	110.0
292.0	244.4
Total 74.1	



SECOND ST
 W.L. Gordon S. W.L. Edwards S.
 50' Conc. - CB
 City of Wichita, Kansas
 L.M. White City Engineer
 September 1947

B.M. 115.71 Iron in thimble @ Edwards N.S. 2nd St.

Property	City
23.4	19.2
19.3	30.1
20.1	12.7
4.4	6.2
44.4	10.3
43.2	85.6
60.3	110.85
13.4	94.1
<u>265.5</u>	
292.0	Total



SECOND ST.
 W.L. Gordon S. W.L. Edwards S.
 30' Gr. - CB
 City of Wichita, Kansas
 I.K. White City Engineer
 September, 1947