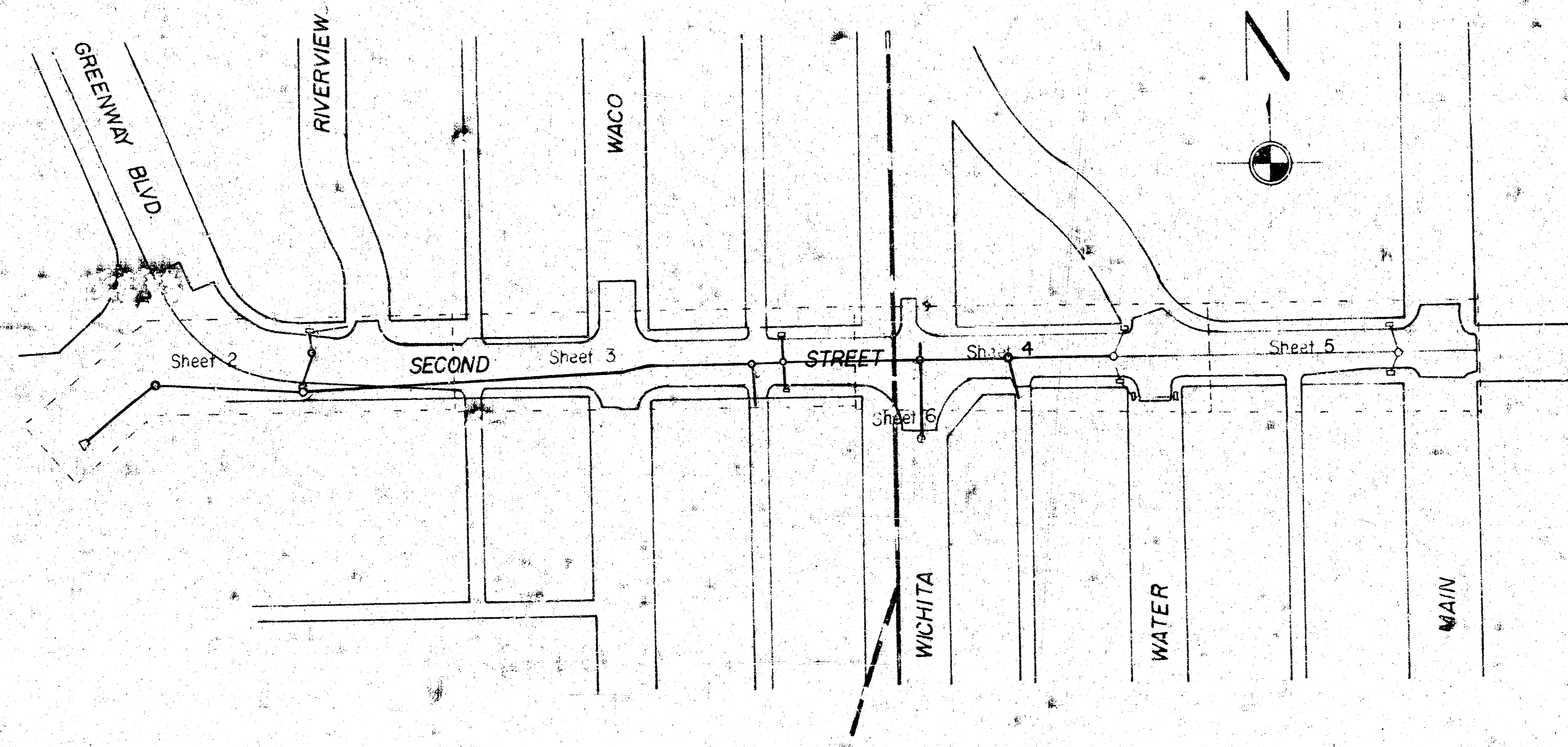


DRAINAGE IN CONNECTION WITH IMPROVING & REIMPROVING SECOND STREET FROM GREENWAY BLVD. TO MAIN STREET

CITY OF WICHITA, KANSAS
R.W. LINN CITY ENGINEER

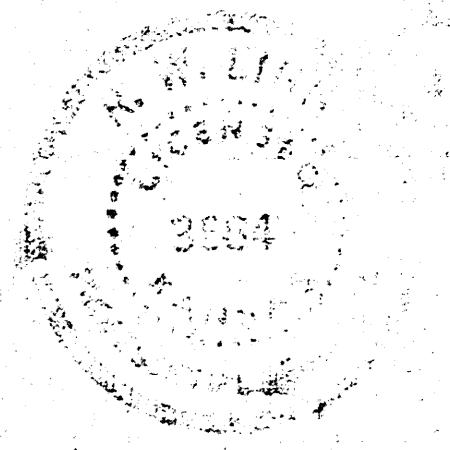
PROJECT NUMBER DAKD576081



GENERAL NOTES

1. THIS PROJECT SHALL BE COORDINATED WITH THE PAVING PROJECT AND THE SANITARY SEWER PROJECT.
2. ALL PIPE NOTED AS RCP MAY BE CMP AS FOLLOWS: CORRUGATED METAL PIPES ON THIS PROJECT MAY BE UNCOATED, SHALL BE OF THE SAME SIZE AS NOTED FOR REINFORCED CONCRETE PIPE, SHALL HAVE HELICAL CORRUGATIONS FOR SIZES FROM 12-INCH TO 21-INCH DIAMETER, AND SHALL BE FULLY PAVED (SMOOTH LOW CMP) FOR SIZES WITH 24-INCH DIAMETER AND LARGER.
3. MANHOLES ABANDONED SHALL BE PAID FOR AT THE UNIT PRICE BID AND SHALL INCLUDE ALL WORK NECESSARY TO REMOVE THE TOP 4 FEET, THE FILLING OF THE VOID BELOW THE REMOVED PORTION WITH SAND COMPACTED TO 90% DENSITY. THE TOP 4 FEET SHALL BE BACKFILLED WITH COMPACTED EXCAVATION MATERIAL AS FOLLOWS: THE BOTTOM 2 FEET SHALL BE COMPACTED TO 90% DENSITY; THE TOP 2 FEET SHALL BE COMPACTED IN LIFTS NOT TO EXCEED 6 INCHES TO A DENSITY EQUAL TO OR GREATER THAN 95% OF THE STANDARD DENSITY OF THE SOIL INVOLVED. ALL MANHOLE PIPES TO BE PLUGGED PRIOR TO THE SAND FILL.
4. MANHOLES REMOVED SHALL BE PAID FOR AT THE UNIT PRICE BID AND SHALL INCLUDE THE REMOVAL OF ALL PORTIONS OF THE MANHOLE. THE BACKFILL SHALL BE AS NOTED ABOVE ITEM 3. ALL MANHOLE PIPES TO BE PLUGGED PRIOR TO THE SAND FILL.
5. ANY PIPE NOTED TO BE PLUGGED OR ABANDONED SHALL BE REMOVED, IF SUCH PIPE HAMPERS CONSTRUCTION. THE REMOVED SECTION OF PIPE WILL BE PAID FOR AT THE UNIT PRICE BID FOR REMOVED PIPE. EACH END OF THE REMAINING PIPE SHALL BE PLUGGED.
6. LOCATION AND ELEVATION OF CURB INLETS SHALL BE IN ACCORDANCE WITH THE LATEST REVISED PAVING PLANS.
7. MINIMUM OF TWO LANES OF TRAFFIC MUST BE KEPT OPEN AT ALL TIMES AT WACO AND MAIN INTERSECTIONS DURING CONSTRUCTION. (USE (2) ASPHALT LIFT OF 2" MAX.) FOR TEMPORARY PATCHING ACROSS INTERSECTIONS.
8. NOTE TO CONTRACTOR - CONTRACTOR TO PROTECT K.G. & E. AND BELL TEL. CO. CONDUITS DURING CONSTRUCTION.
9. NOTE TO FIELD ENGINEER:
MAIN LINE PIPE ALIGNMENT
1. 2+00 TO 6+33 - ALIGNMENT CAN SHIFT NORTH (4" MAX.)
2. 6+73 TO 13+08 - ALIGNMENT CAN SHIFT NORTH (4" MAX.)
10. PROTECT ALL IRONS ON THIS PROJECT.
11. EXISTING ROUND SEGMENTED BLOCK STORM WATER SEWER ON SOUTH SIDE OF SECOND ST. IS TO BE FILLED WITH SAND FROM THE PLUGGED OUTFALL STRUCTURE AT THE RIVER TO THE ABANDONED MANHOLE AT THE WEST PROPERTY LINE OF WATER ST. (OR AS DIRECTED BY THE ENGINEER). ITEM IS TO BE PAID FOR AT THE BID PRICE PER LIN. FT. OF PIPE SANDFILLED. SANDFILLED PIPES SHALL NOT BE PLUGGED AT ABANDONED MANHOLES.

DATE _____

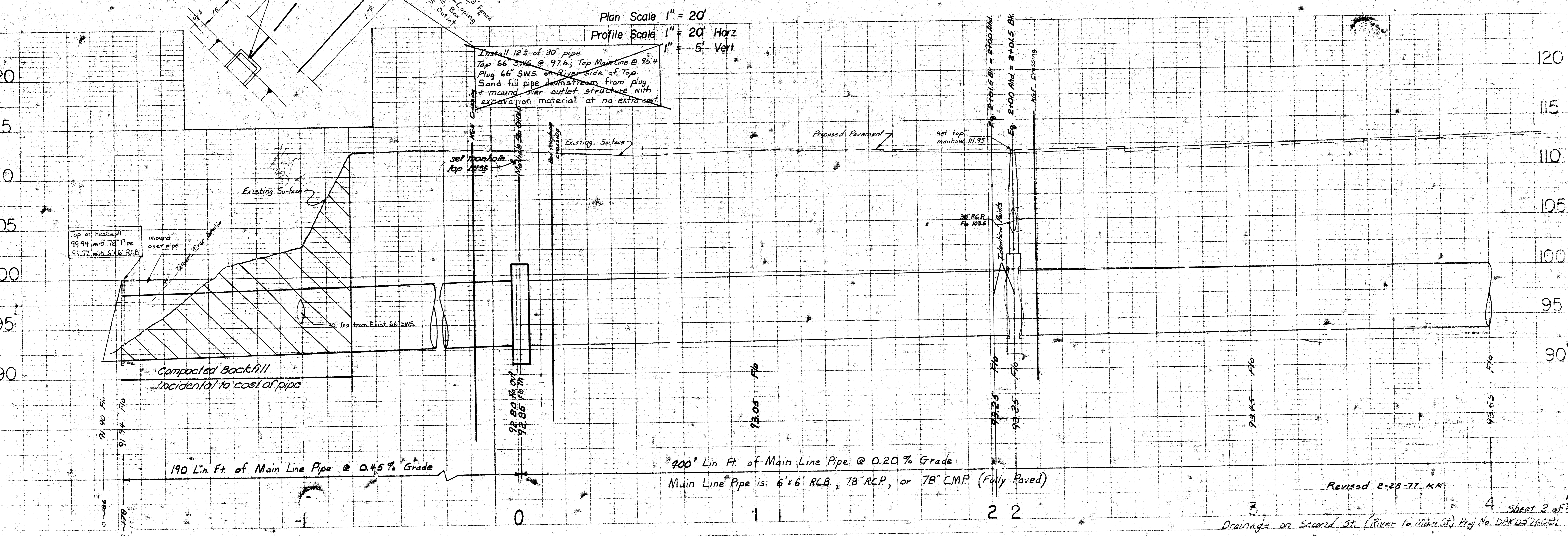
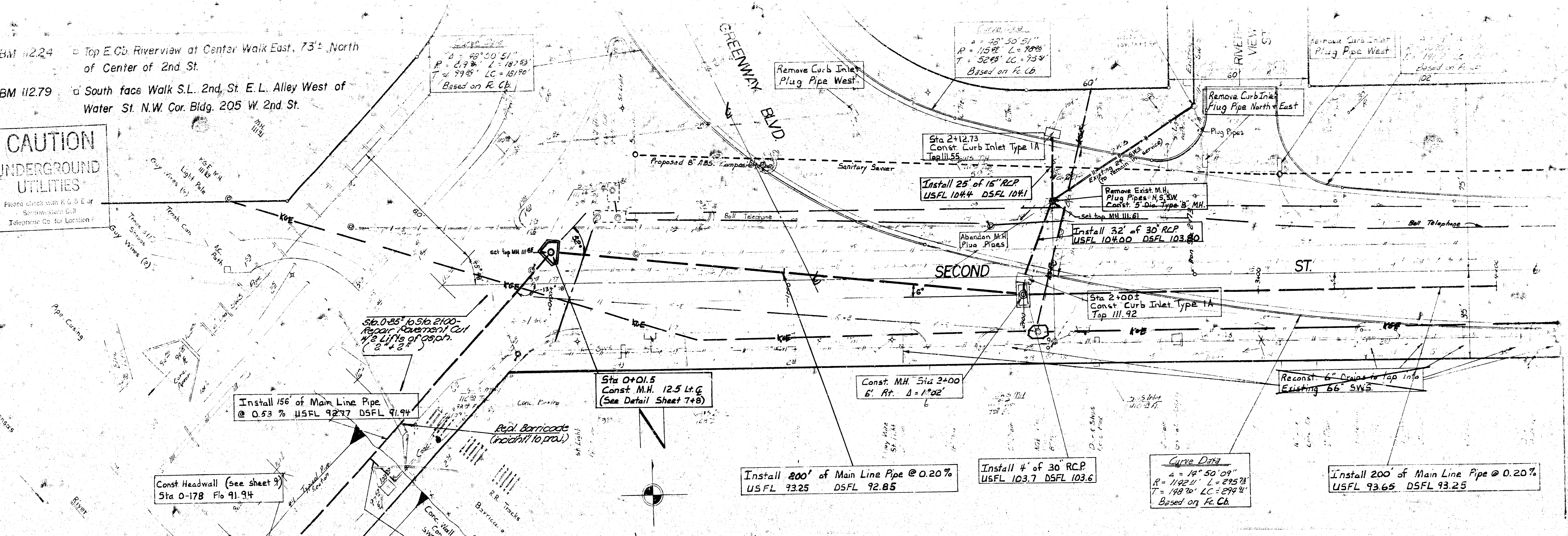


REVISED 2-28-77

Sheet 1 of 8

BM 112.24 Top E. Co. Riverview at Center Walk East, 73' North of Center of 2nd St.
 BM 112.79 South face Walk S.L. 2nd St. E. L. Alley West of Water St. N.W. Cor. Bldg. 205 W. 2nd St.

CAUTION
 UNDERGROUND UTILITIES
 Pleased check with K & S E or
 Sewer District Bell Telephone Co. for Location



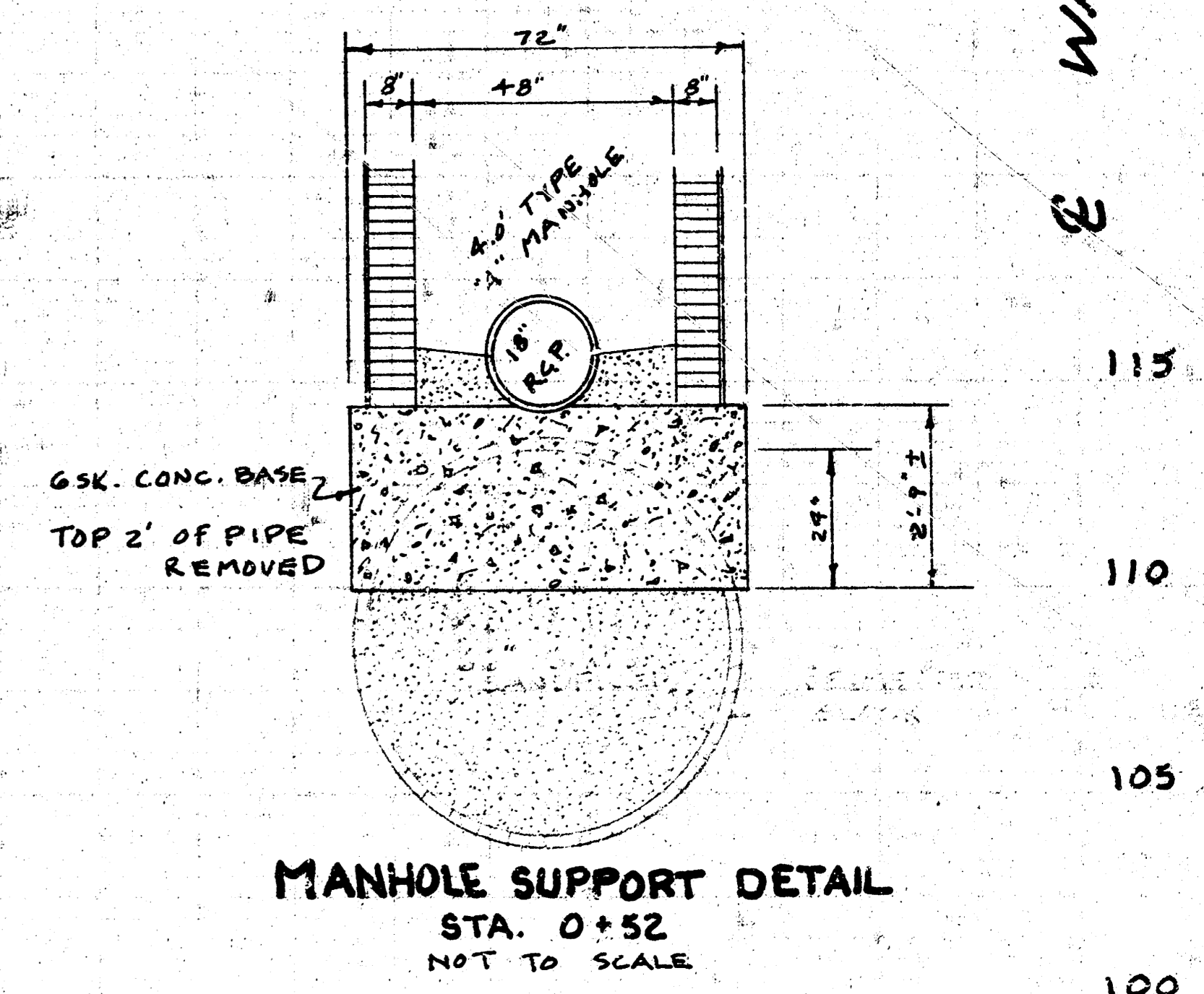
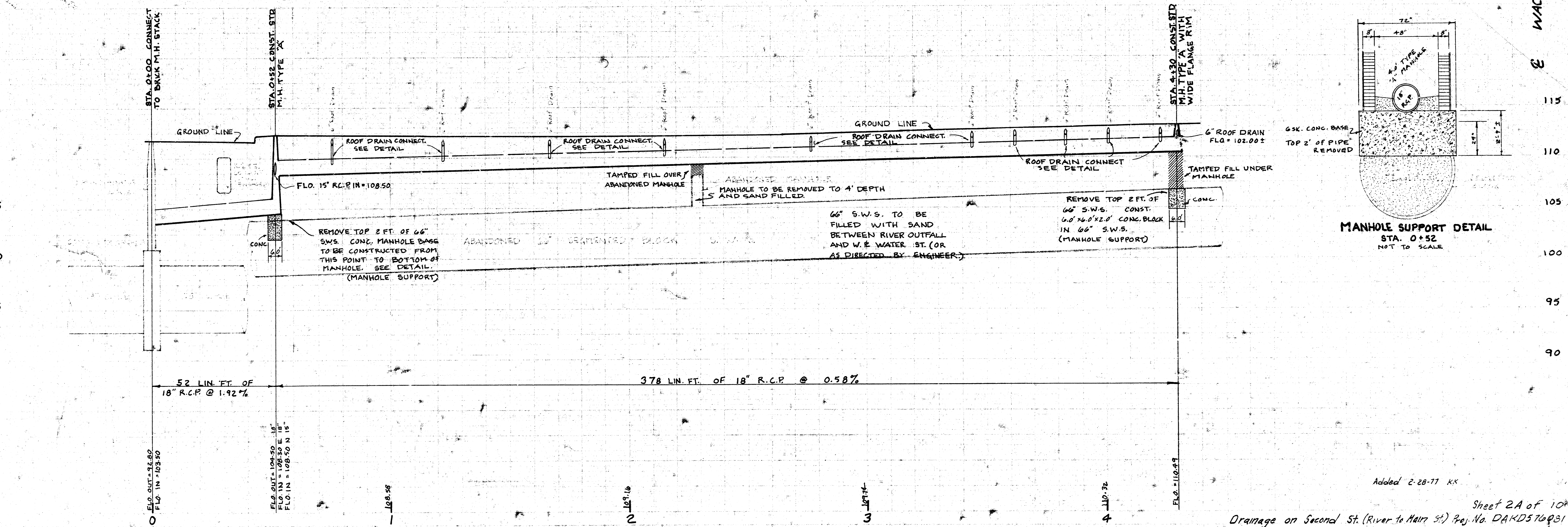
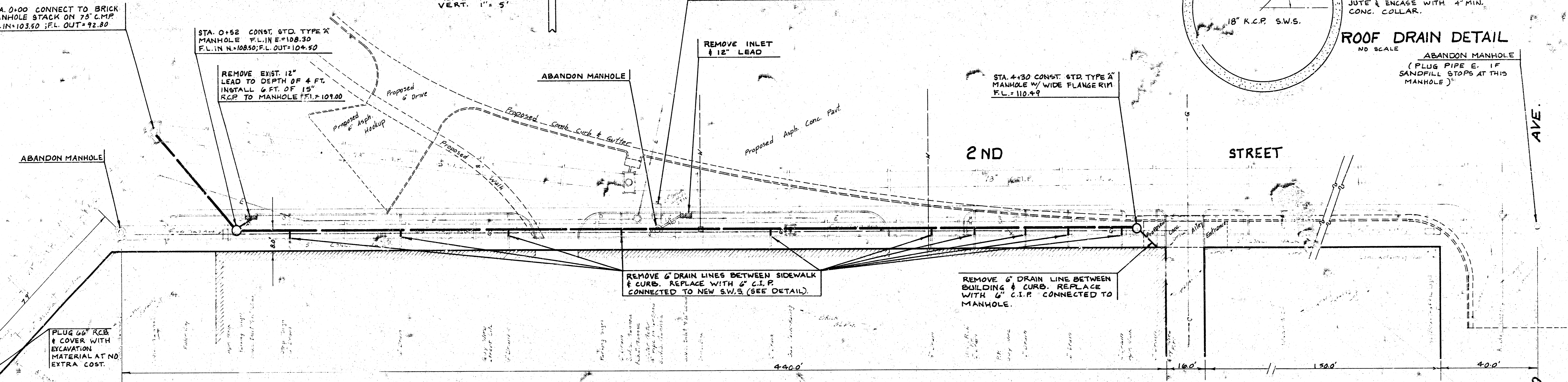
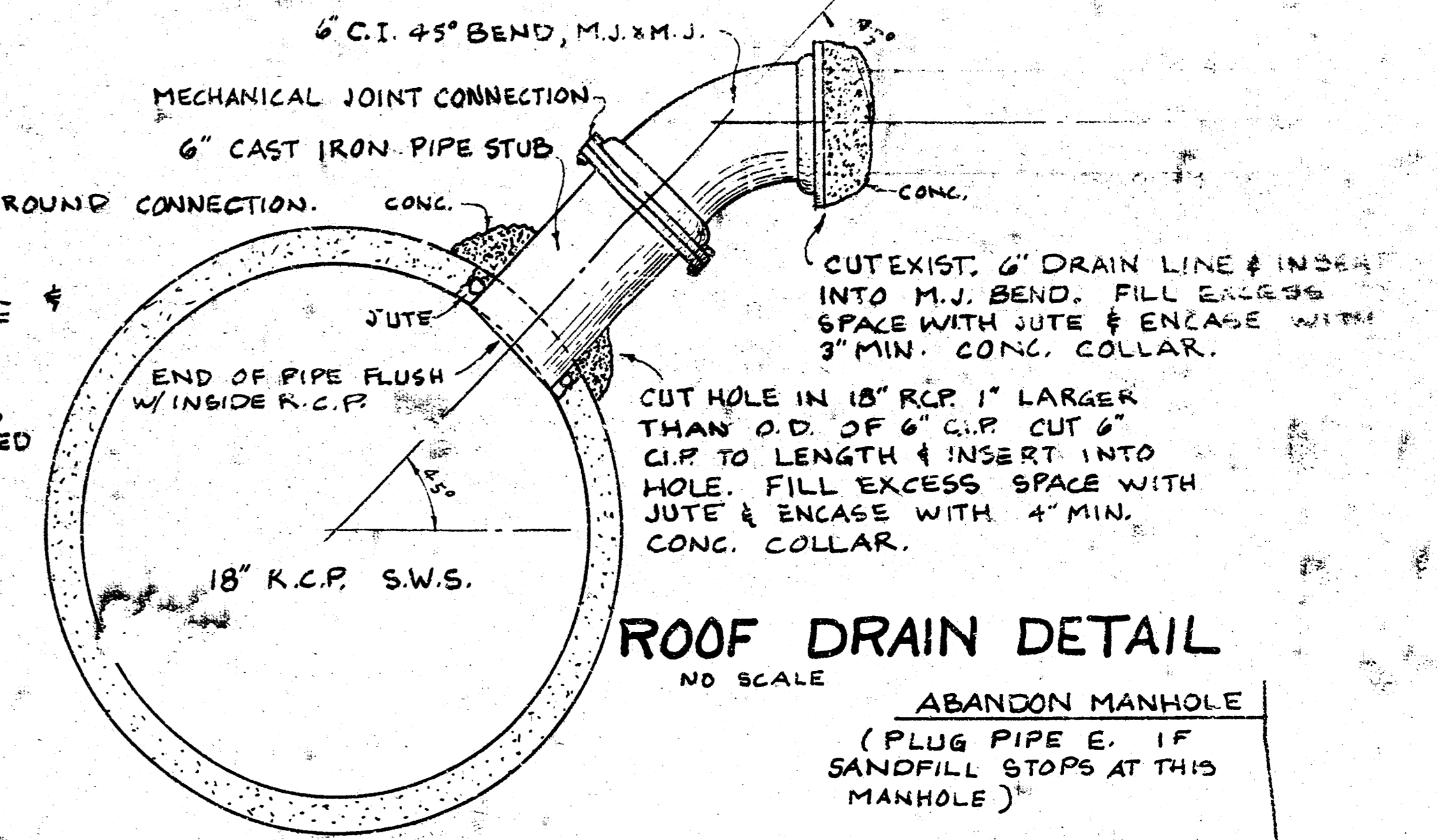
190 Lin. Ft. of Main Line Pipe @ 0.45% Grade
 400' Lin. Ft. of Main Line Pipe @ 0.20% Grade
 Main Line Pipe is: 6'x6' RCB, 78" RCP, or 78" CMP (Fully Paved)

Revised: 2-22-77 KK

B.M. = 112.24 ~ "TOP E. CURB RIVERVIEW @ CTR. WK. EAST, 73' ± N. OF CTR. 2ND. ST.
 B.M. = 112.79 ~ "S. FACE WALK S. L. 2ND. ST. E. L. ALLEY W. OF WATER ST. N.W. COR. BLDG. 205 W. 2ND. ST."

REMOVAL OF ABANDONED 4" INCH GAS LINE IN TRENCH SHALL BE CONSIDERED INCIDENTAL TO PROJECT. ANY SIDEWALK OR DRIVEWAY REQUIRING REMOVAL FOR INSTALLATION SHALL BE REMOVED AND REPLACED AT NO EXTRA COST. FIELD ENGINEER SHALL DETERMINE REPLACEMENT QUANTITIES.

SCALE:
 PLAN: 1" = 20'
 PROFILE: HORIZ. 1" = 20'
 VERT. 1" = 5'



Plan Scale 1" = 20'
 Profile Scale 1" = 20' Horz.
 1" = 5' Vert.

Abandon M.H.
 Plug Pipes E+W

Remove Manhole and Connect Exist.
 S.W.S. to New Manhole. (Connection
 will be incidental to project)

Const. Type IA Curb Inlet
 Sta 8+46.6 Top 113.75

Install 27' of 15" RCP
 USFL 109.8 DSFL 109.8

Const. M.H. on E Sta 8+46
 Ring 2' Lt Top 113.58

Install 36' of Main Line Pipe
 USFL 94.86 DSFL 94.49

Remove Inlet
 Plug Pipe South

SECOND ST.

Adjust M.H.
 Plug Pipe E+W

Abandon M.H. Plug Pipes

Remove Inlet
 Plug Pipe North + South

Abandon M.H.
 Plug Pipes

Engr. + Contractor-Use
 Bevel Pipe 1/2 Conc. Pipe
 + Fabricated Defl. w/
 CMP. See Plan for
 Defl. (Shl. 899)

Const. M.H. on E Sta 8+10
 Ring 2' Rt. Top 113.99

Install 35' of 18" RCP
 USFL 108.85 DSFL 108.50

Install 20' of 15" RCP
 USFL 110.1 DSFL 109.8

Install 104' of Main Line Pipe @ 0.20%
 USFL 94.77 DSFL 94.86

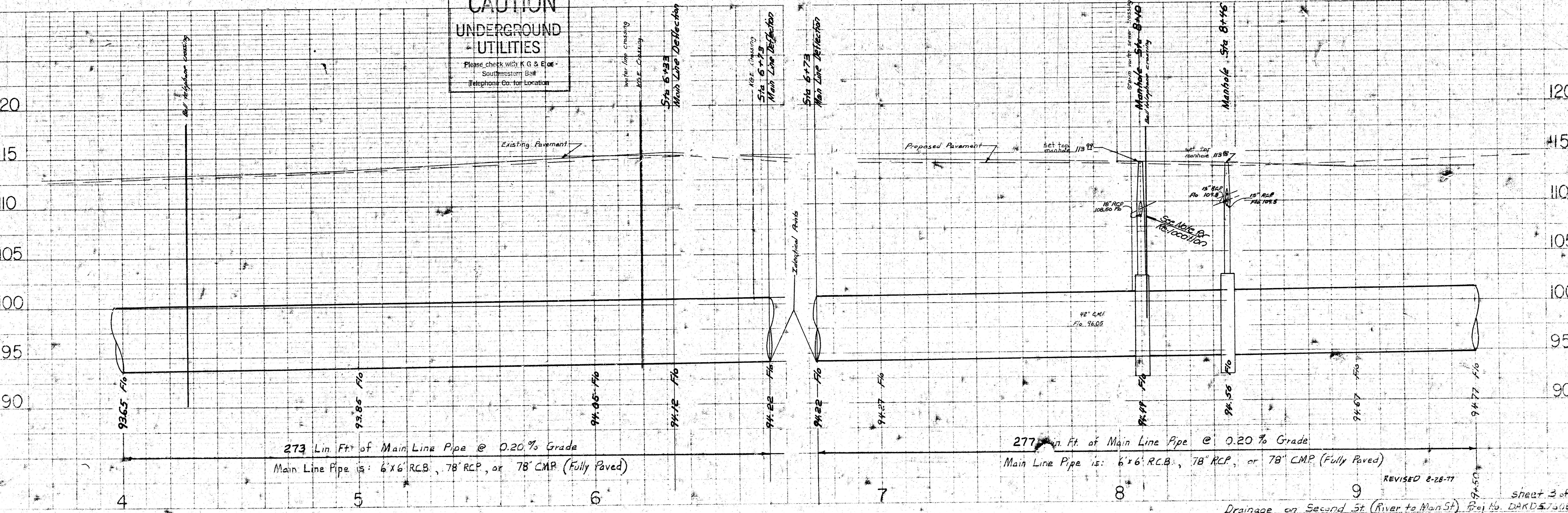
Install 410' Main Line Pipe
 USFL 94.89 DSFL 93.65

Contact S.W. Bell
 for Relocation of
 Telephone Line

4.08' Surplus Between
 Waco & Wichita St.

Const. Type IA Curb Inlet
 Sta 8+46.0 Top 113.95

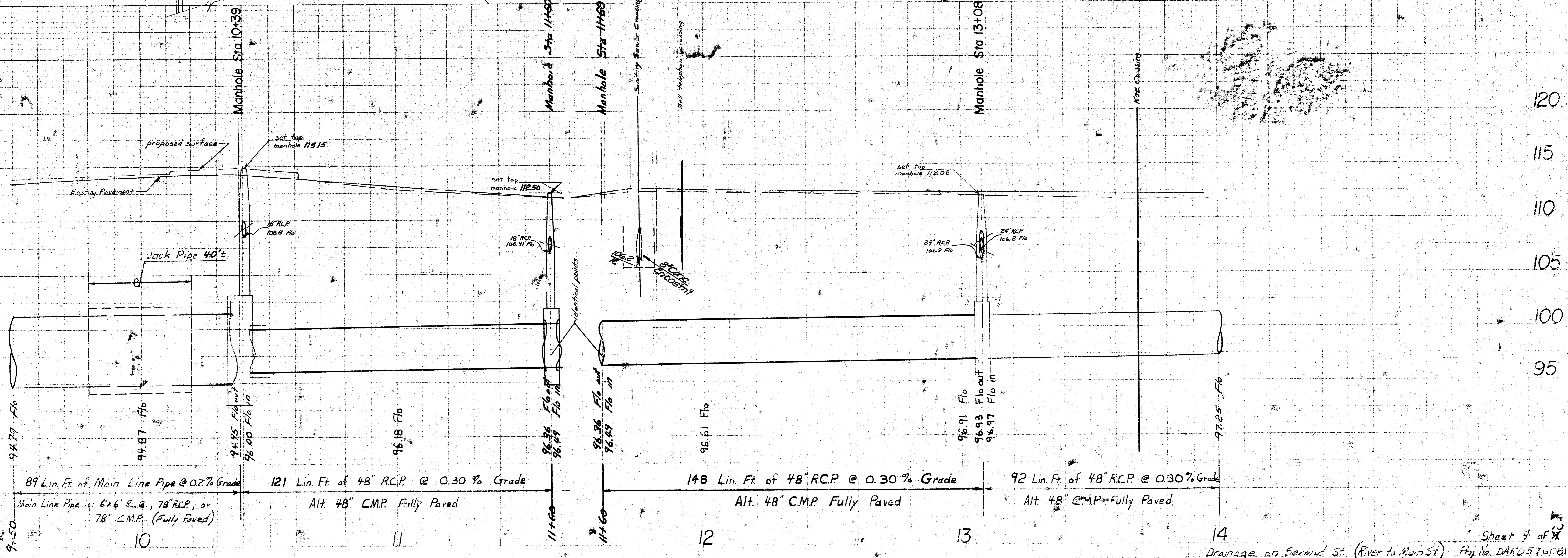
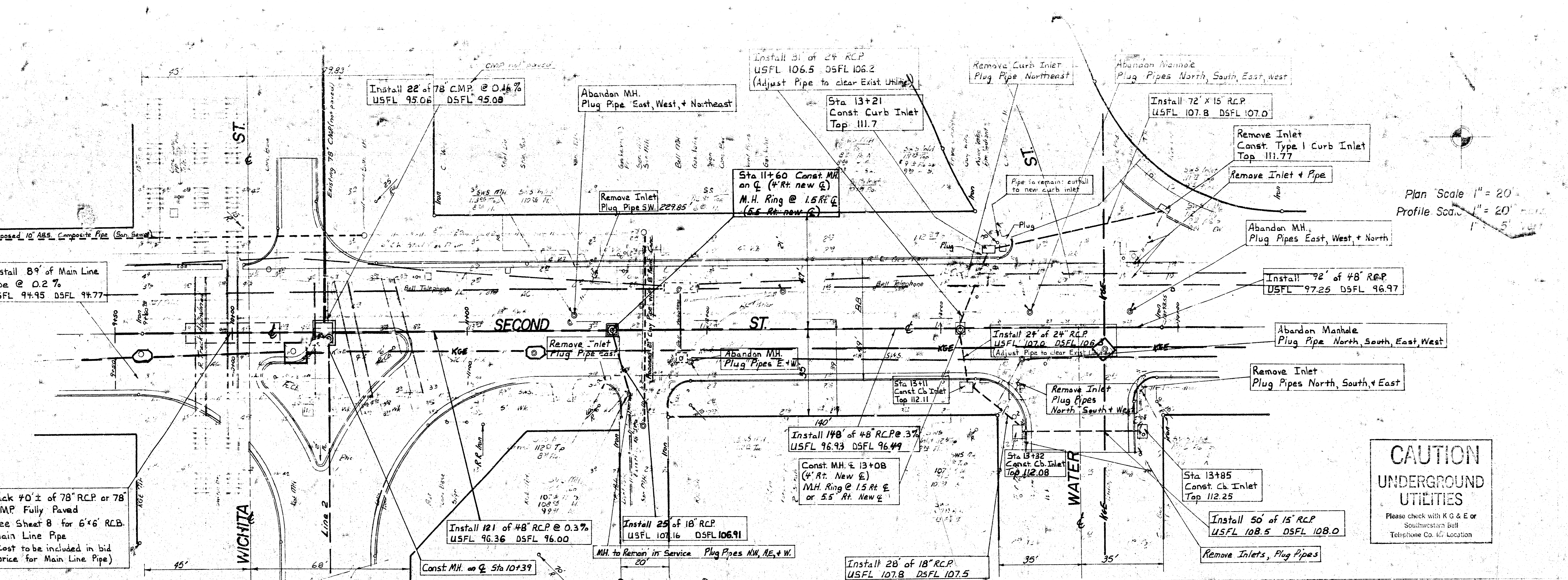
CAUTION
UNDERGROUND
UTILITIES
 Please check with K & E or
 Southwestern Bell
 Telephone Co. for Location



273 Lin. Ft. of Main Line Pipe @ 0.20% Grade
 Main Line Pipe is: 6'x6' R.C.B., 78" RCP, or 78" CMP (Fully Paved)

277 Lin. Ft. of Main Line Pipe @ 0.20% Grade
 Main Line Pipe is: 6'x6' R.C.B., 78" RCP, or 78" CMP (Fully Paved)

REVISED 2-28-77



Install 270' of 18" RCP
USFL 78.12 DSFL 77.25

Reverse Curve Data
 $\Delta = 2^{\circ} 34' 52''$
 $R = 626'$ $L = 50'$
 $T = 25'$ $LC = 50'$
 Based on F.C.D.

Const. Type IA Curb Inlet
Sta 16+78.5 Top 111.61

Install 30' of 15" RCP
USFL 108.1 DSFL 107.8

Note: 2 lanes of traffic
be open at
all times on Main St.

Remove Curb Inlet

Abandon Manhole - Plug Pipe North, South, + West

Sta 17+76
Plug Pipe

Install 86' of 42" RCP @ 0.3%
USFL 98.88 DSFL 98.62

Constr. M.H. @ Sta 16+90 (4 Rt. New @)
M.H. Ring @ 1.5 Rt. @ or 5.5 Rt. New @

Remove 18' of 18" RCP
Install 15' of 42" RCP @ 1% (Adjust Pipe to Clear Exist. Utilities)

Adjust Existing Manhole for New 42" RCP
Plug Pipes on North and West

Const. Type IA Curb Inlet
Sta 16+78.5 Top 111.71

Reverse Curve Data
 $\Delta = 9^{\circ} 08' 52''$
 $R = 3195'$ $L = 50'$
 $T = 25'$ $LC = 50'$
 Based on F.C.D.

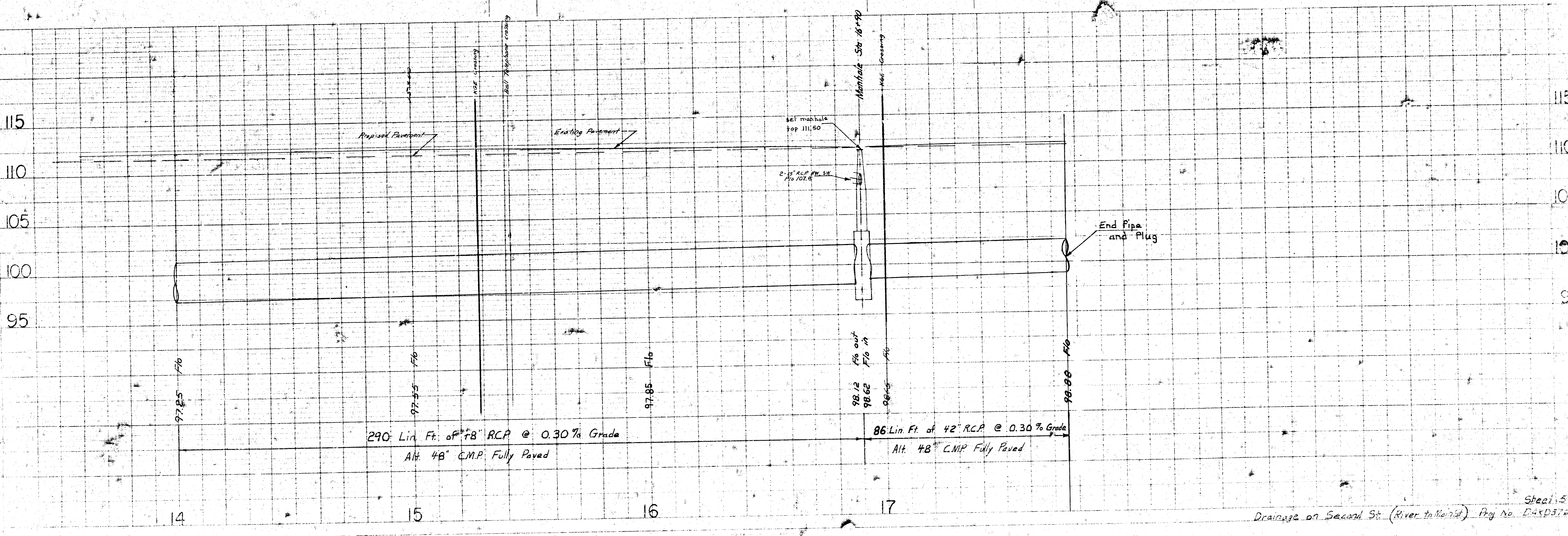
Remove Curb Inlet
Plug Pipe North

Remove Curb Inlet
Plug Pipe West

Abandon M.H.
Plug Pipes East + West

CAUTION
UNDERGROUND
UTILITIES
 Please check with K G & E or
 Southwestern Bell
 Telephone Co. for Location

Plan Scale 1" = 20'
 Profile Scale 1" = 20' Horiz
 1" = 5' Vert



290' Lin. Ft. of 18" RCP @ 0.30% Grade
 Alt. 48" C.M.P. Fully Paved

86' Lin. Ft. of 42" RCP @ 0.30% Grade
 Alt. 48" C.M.P. Fully Paved

