

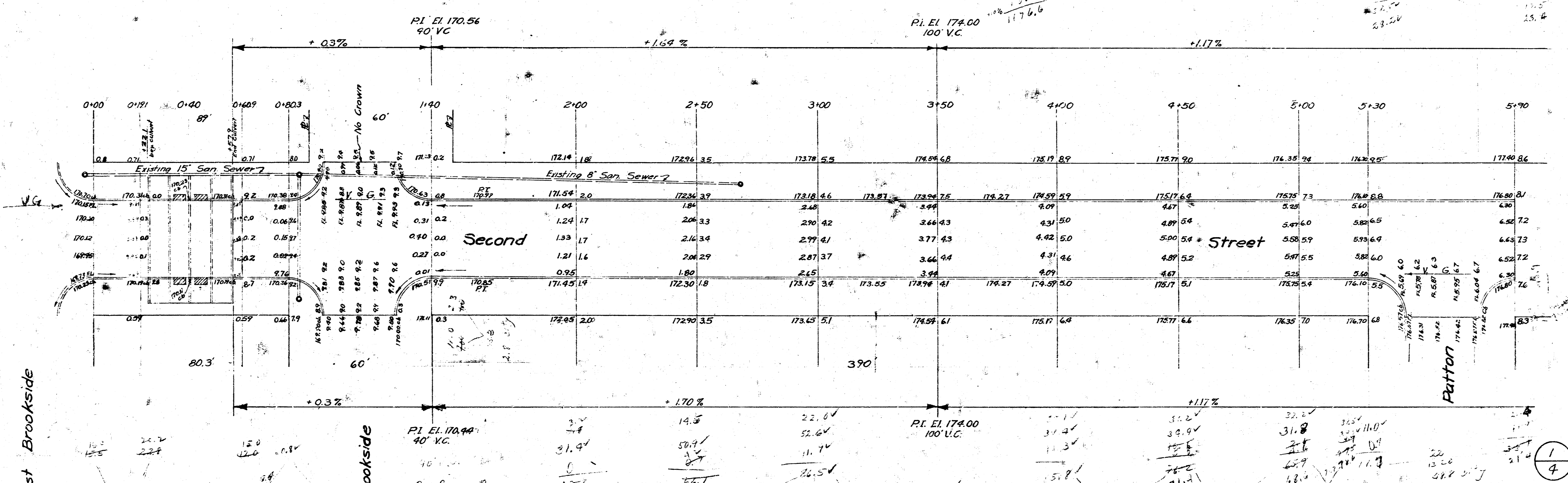
B.M. 179.41 "G" in Globe East Curb Edgmore, S.L. Second.
 B.M. 172.93 "4" in 1949 top of curb west end of Radius NW corner Rockwood & W. Brookside
 Use only these benchmarks as described on this plan.

NOTE:
 Sta. 0+40 @ 4'-8"x3'-2" Reinf. Conc.
 Box Culvert
 Elevation top of 15" San. Sewer under
 culvert = 160.99. Elevation bottom of
 apron wall 162.66. 1.7' Clearance

Excavation City

12.6
6.1
14.2
91.1
1.7
2.8
92.8
21.9
107.1
117.0

Prop.
 2.3
 8.1
 91.1
 141.4
 175.4
 176.8
 150.5
 151.9
 74.2
 119.3
 105.7
 21.9
 117.6



West Brookside

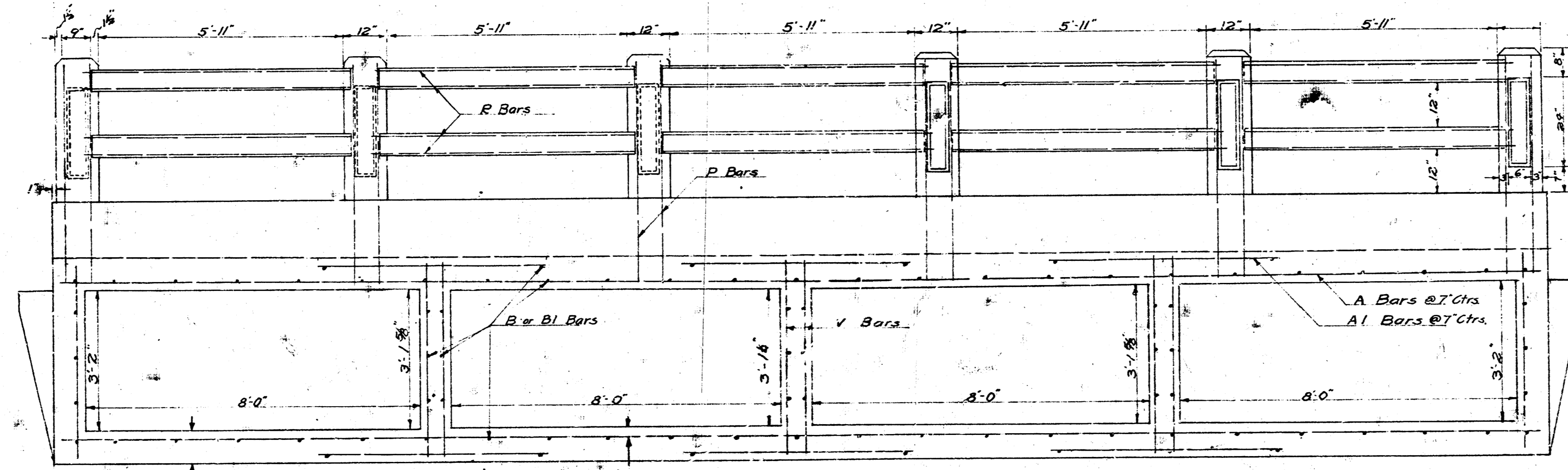
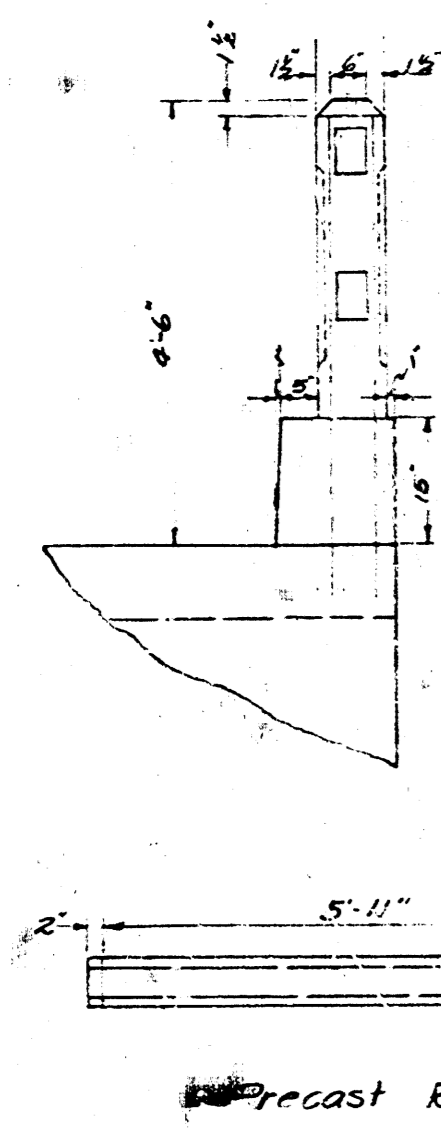
East Brookside

SECOND ST.
 E.L. WEST BROOKSIDE ~ E.L. PATTON
 30' CONC. PAVE & CURB
 CITY OF WICHITA, KANSAS
 L.K. WHITE CITY ENGINEER
 JUNE 1950 PROJ. NO. C10-45

13 drives

1/4

REINFORCED CONCRETE BOX CULVERT
EAST SECOND STREET & BROOKSIDE PARKWAY

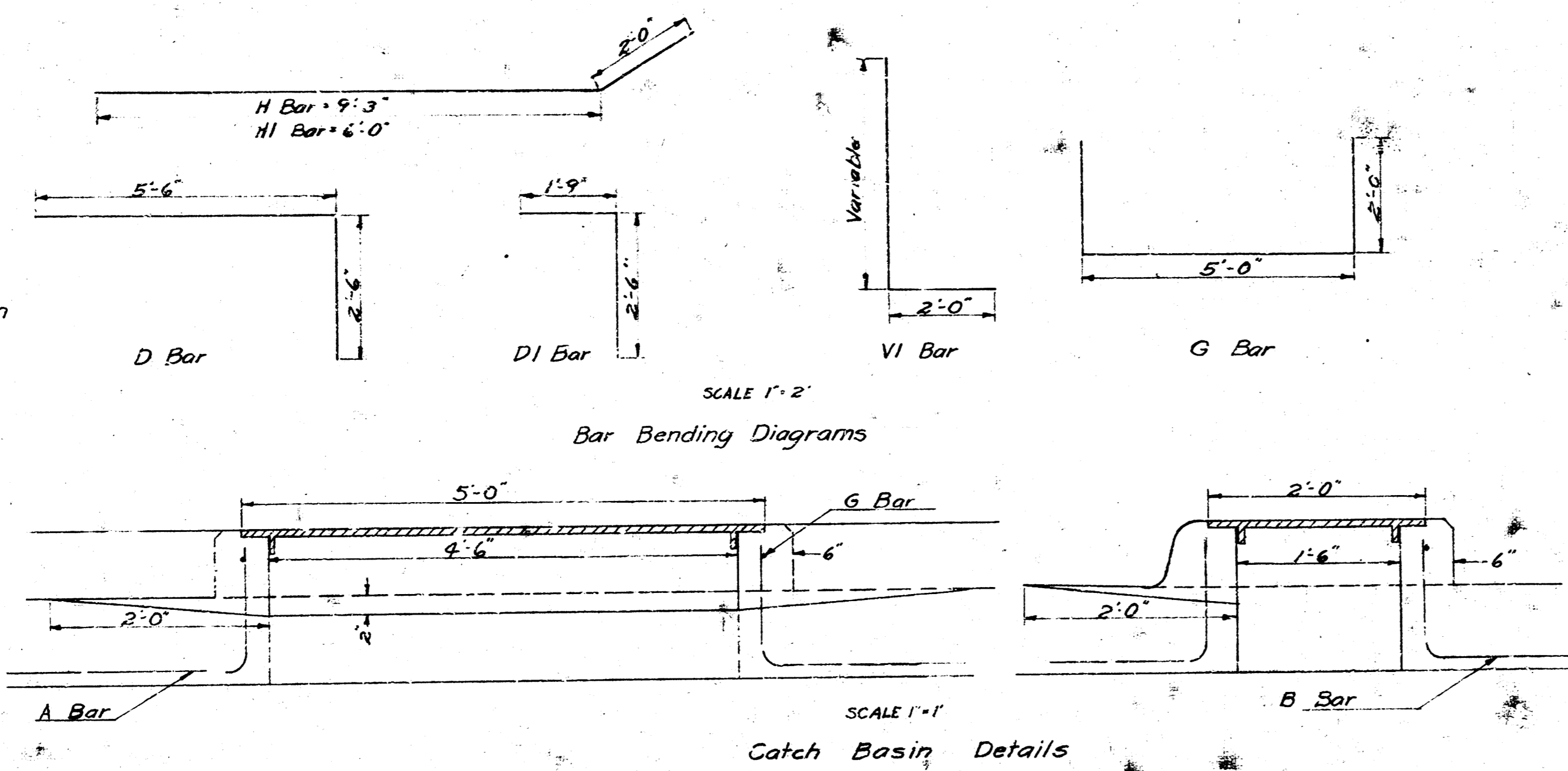


Gross Section of Box - Handrail Details

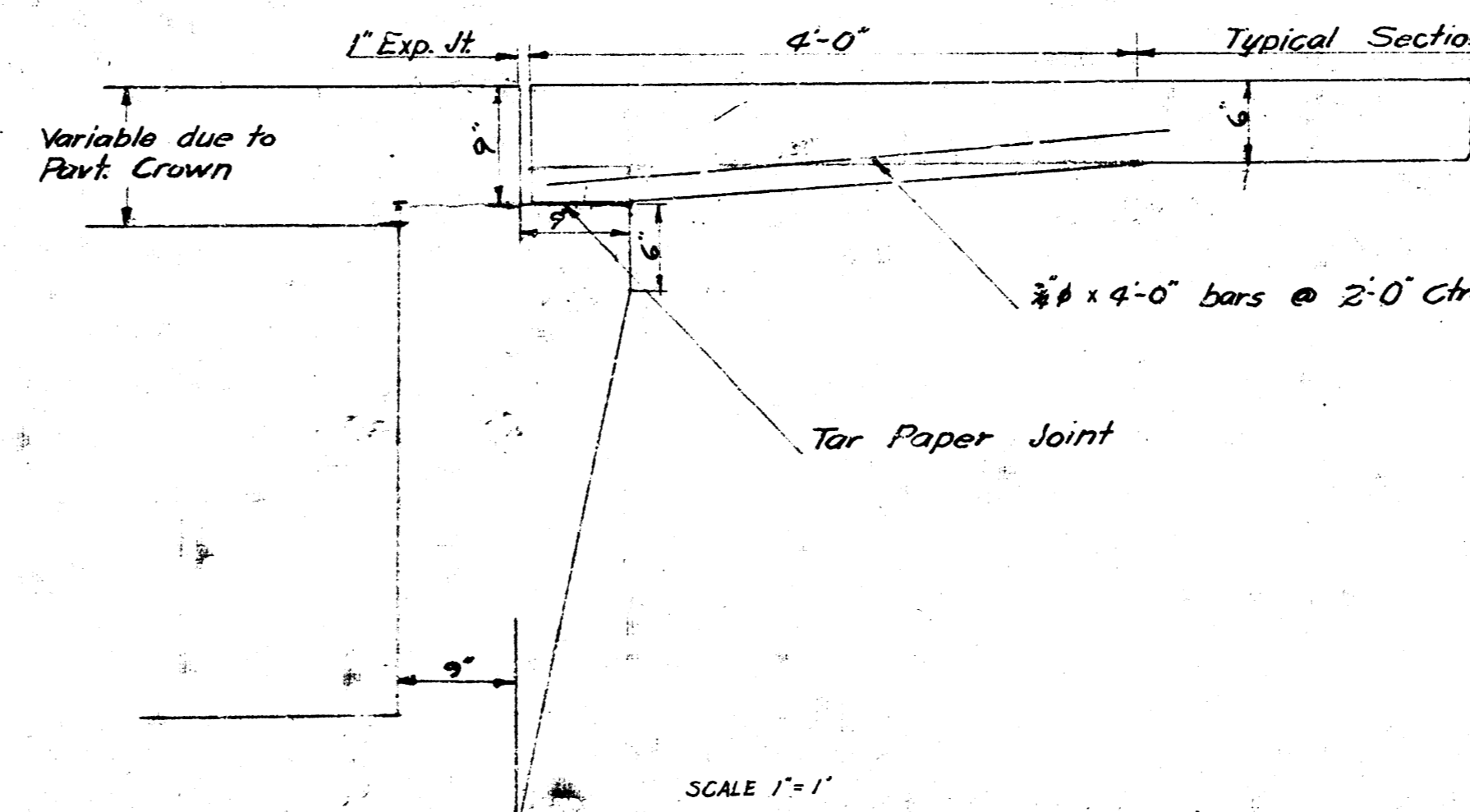
BILL OF MATERIALS				
Bar	Number	Size	Length	Shape
A	172	3/4"	35'-6"	
AI	516	3/8"	5'-0"	
B	86	3/4"	4'-0"	
BI	86	3/4"	12'-0"	
C	6	3/4"	35'-0"	
D	16	3/4"	4'-3"	
DI	16	3/4"	34'-6"	
E	4	3/4"	6'-6"	
EI	8	3/4"	4'-6"	
V	212	3/4"	4'-6"	
VI	28	3/4"	6'-0" to 4'-0"	
H	8	3/4"	11'-3"	
HI	4	3/4"	8'-0"	
F	56	3/4"	1'-0"	
G	4	3/4"	9'-0"	
K	2	5/8"	35'-6"	
P	48	3/8"	4'-6"	
R	80	3/4"	6'-6"	

Reinf. Steel	24,124 LBS
Class A Concrete	162 Cu Yds
Class D Concrete (4 parts cement per cu yd)	18 Cu Yds
Fill Sand	23 Tons
General Excavation	352 Cu Yds
Hand Excavation	17 Cu Yds
Sq. Ft. Sidewalk	286 Sq. Ft.
Lin. Ft. Integral Curb	495 Lin. Ft.
2'x5' Catch Basin Covers	4

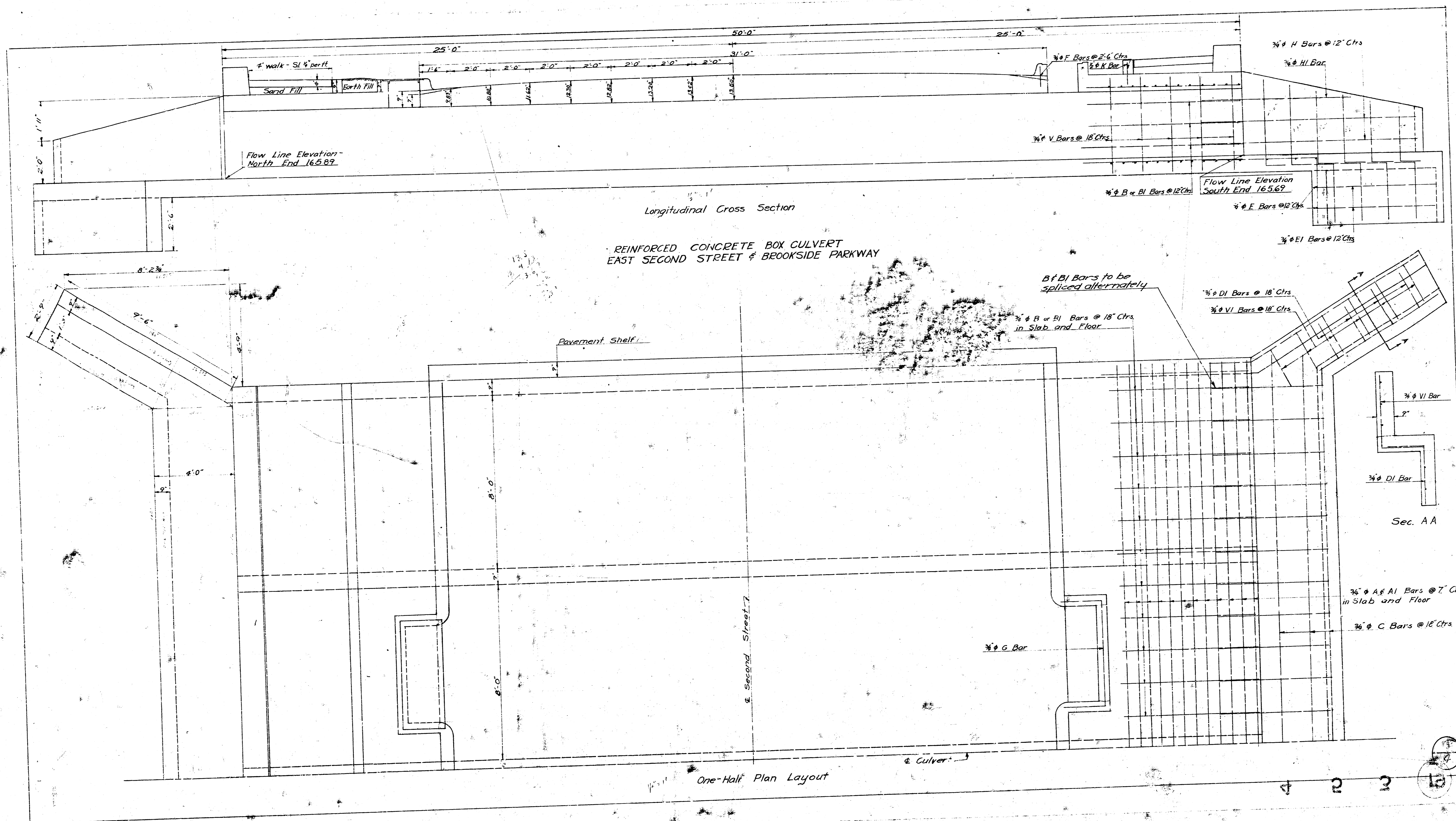
NOTE:
1. One end of each precast rail to be wrapped with tar paper to allow for expansion.
2. Cut A and B bars in opening of catch basin and bend up as shown on catch basin details.
3. Bevel all exposed edges with 1" triangular mandreling.
4. Class 'D' concrete to be used in handrail posts and rails.



Catch Basin Details



Gross Section - Pavement Shelf & Approach Slab



15