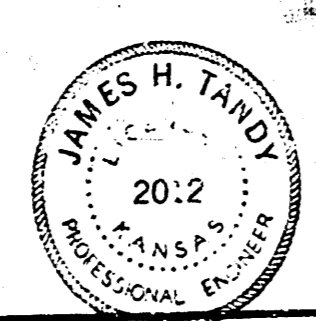
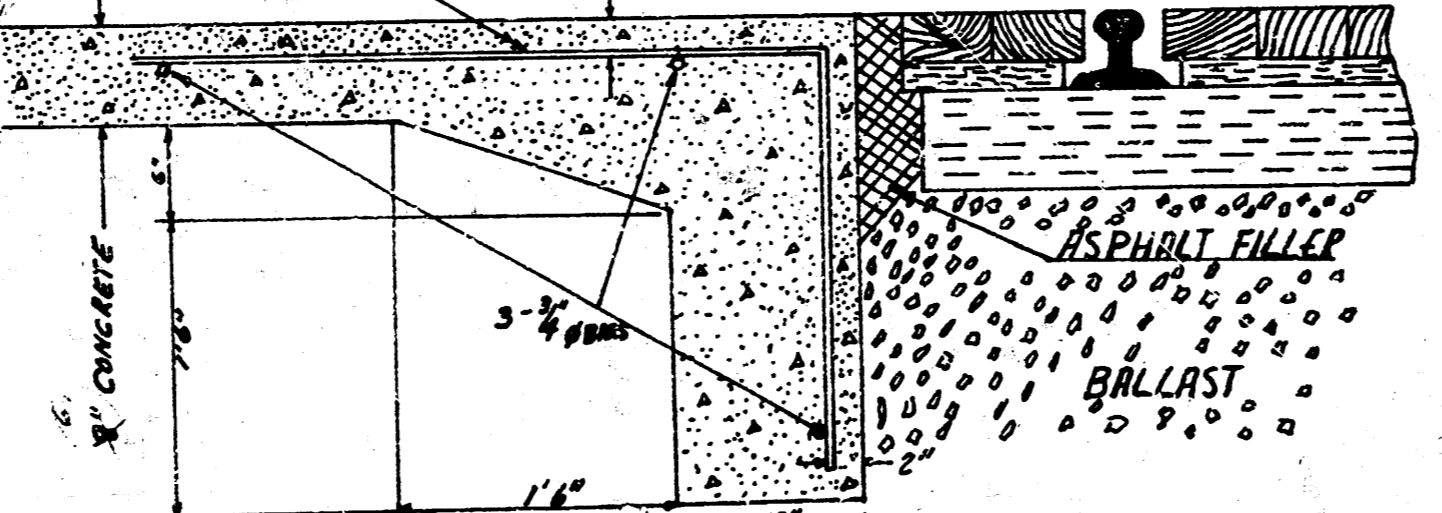
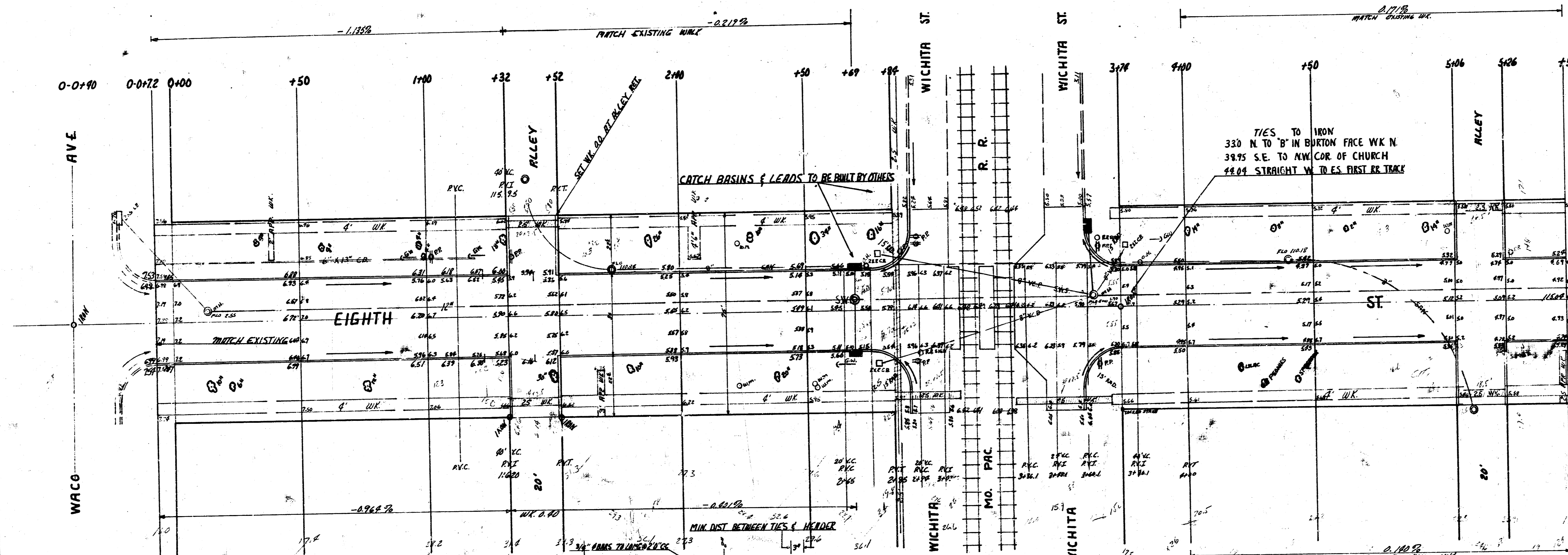


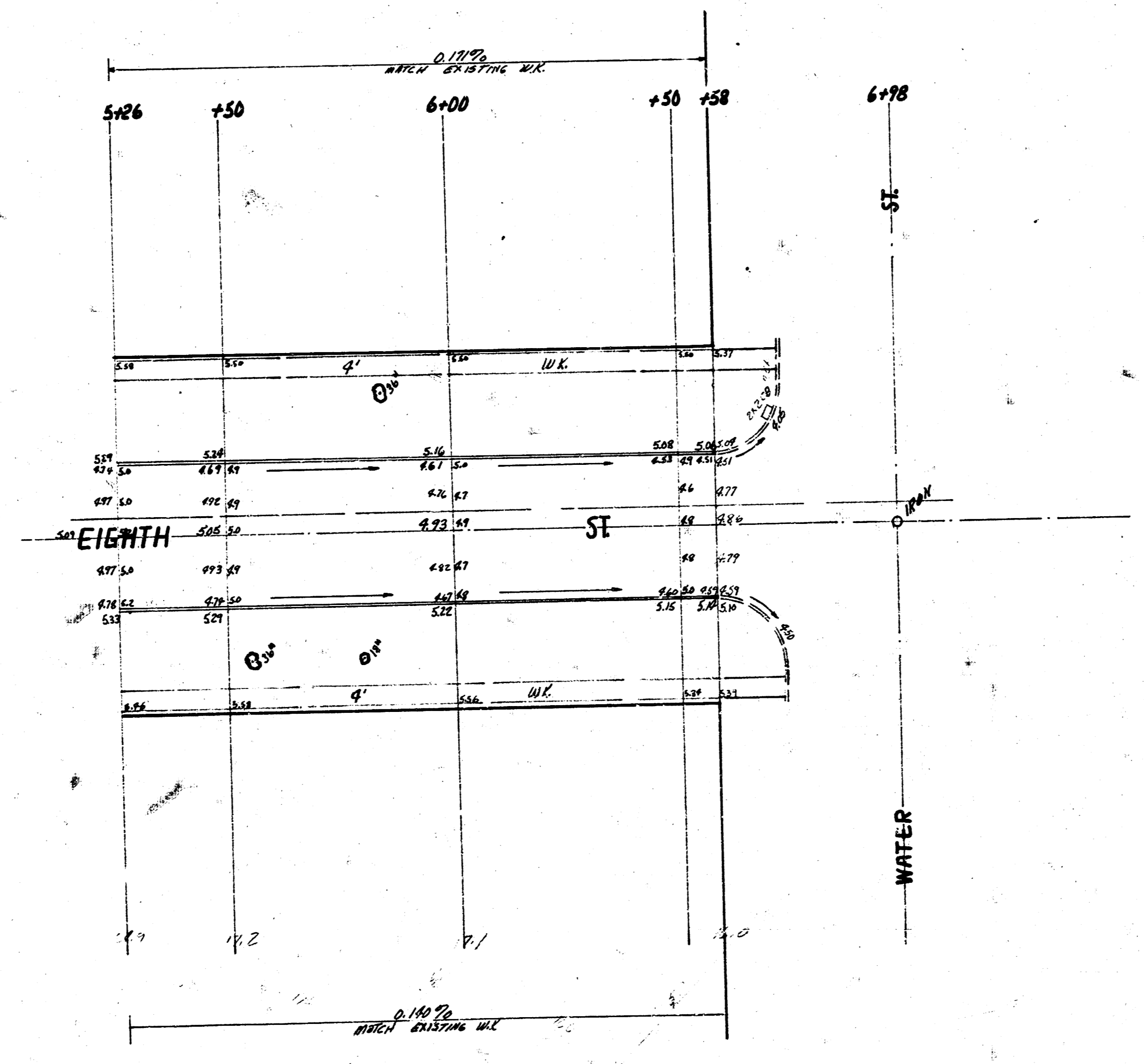
B.M. 115.28 "C" IN CARTER CTR. OF WK. S. SW. COR. 8TH & WATER  
 B.M. 117.53 "R" IN RITCHIE CTR. OF APP. WK. N. 1' N. OF BK. CO. NE. COR. WACO & 8TH ST.  
 BASE LINE ON 4



TAL. EXCAV. CITY  
 P&P 4776 10.9.7  
 11/2 P&P 109.10.9  
 525.8 24/12 12.360/11

EIGHTH ST.  
 E.L. WACO W.L. WATER  
 30' CONC. & CB.  
 CITY OF WICHITA, KANS.  
 B.C. SMITH CITY ENGINEER  
 DATE MAY 1959, PROJ. NO C-19-46

1/2



EIGHTH ST.  
 E.L. WACO W.C. WATER

C-19-46  
 2/2