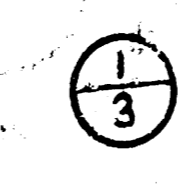
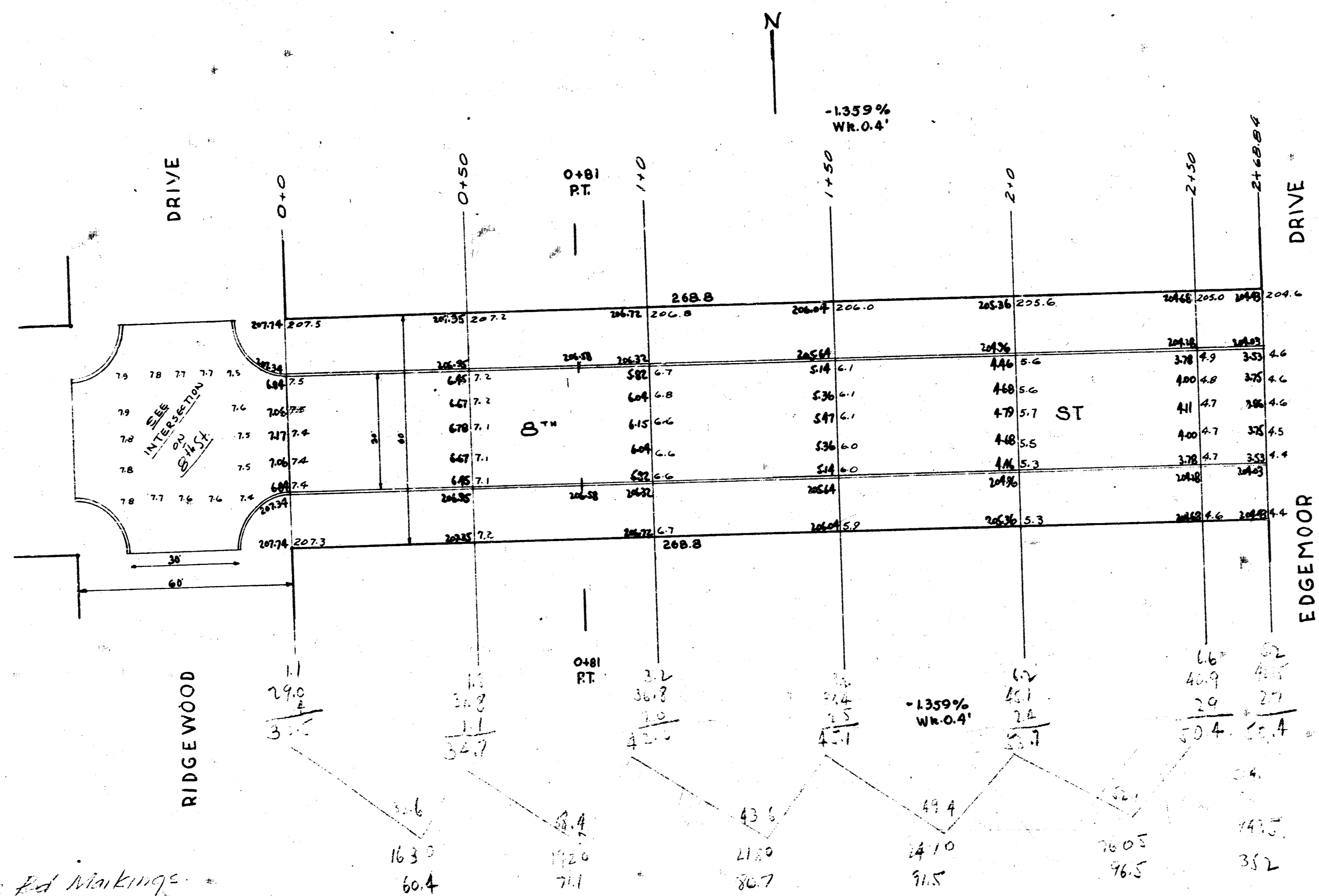


Notes: Inverts and Manholes

8th ST
 EAST HIGHLAND NO. 10 WLEDGEMOOR
 30' CONCRETE & CURB
 CITY OF WICHITA, KANS.
 L.K. WHITE CITY ENGINEER
 DEC. 1946



BM. 204.36 Top Iron W.L. Edgemoor S.L. 8.4

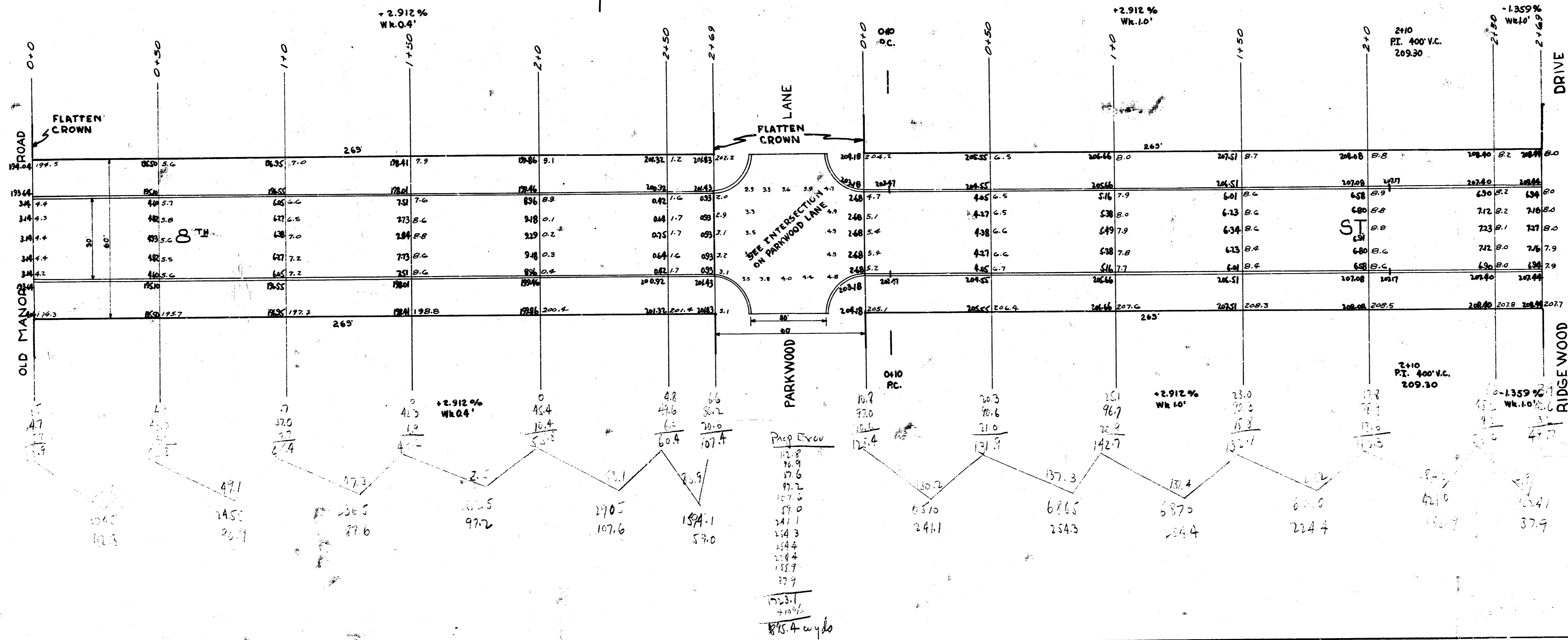


Prop. Elev
 60.4
 71.1
 81.7
 91.5
 101.5
 111.4
 121.2
 131.0
 140.8

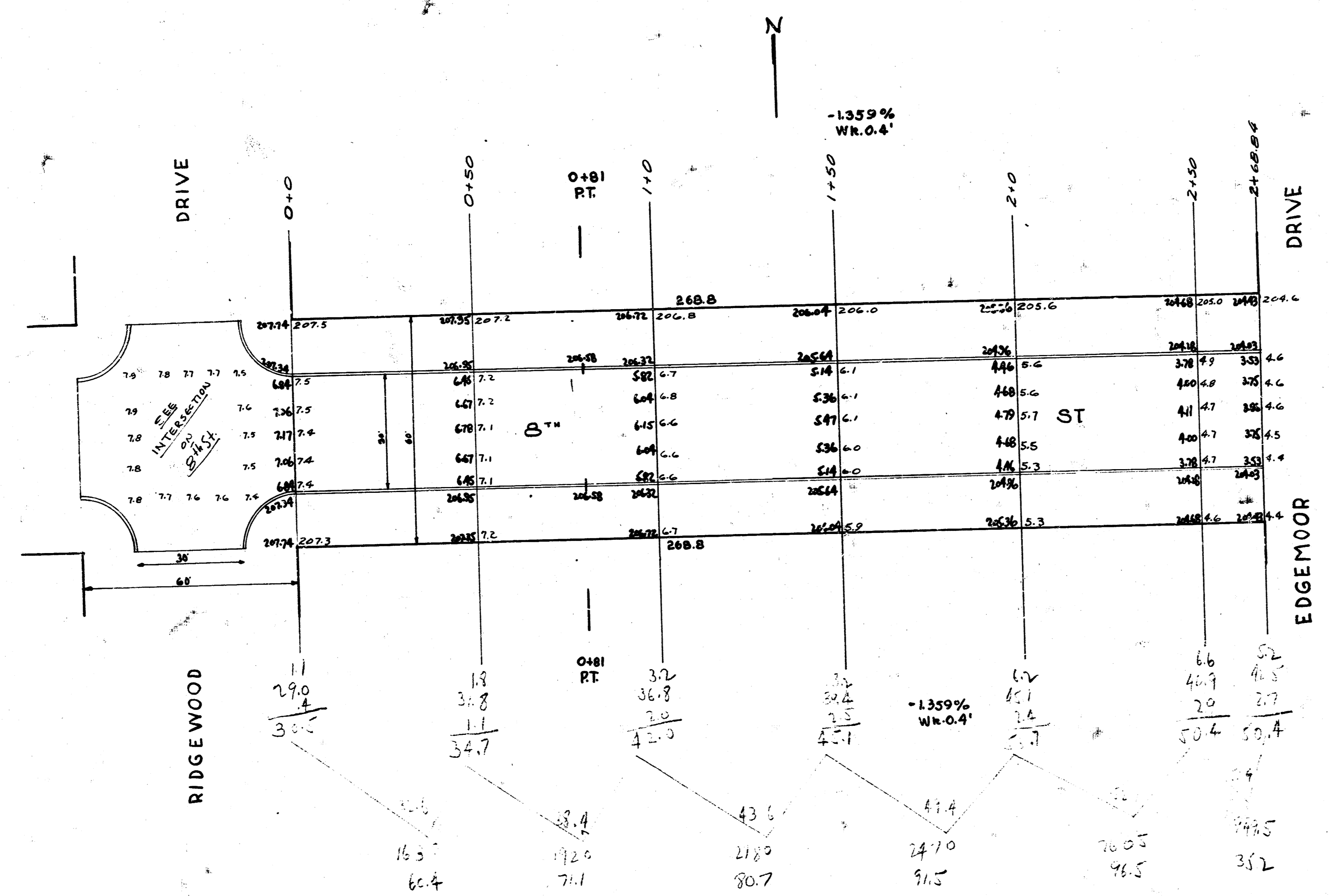
Notes: Ignore Red Markings



B.M. 193.17 Top Iron W.L. Old Manor S.L. 8th
 B.M. 203.11 Top Iron W.L. Parkwood S.L. 8th
 B.M. 207.89 Top Iron W.L. Ridgewood S.L. 8th



BM. 204.35 Top Iron W.L. Edgemoor S.L. 211



Pipe Box
 60.4
 71.1
 82.7
 94.5
 106.4
 118.3
 130.4
 142.7
 155.2