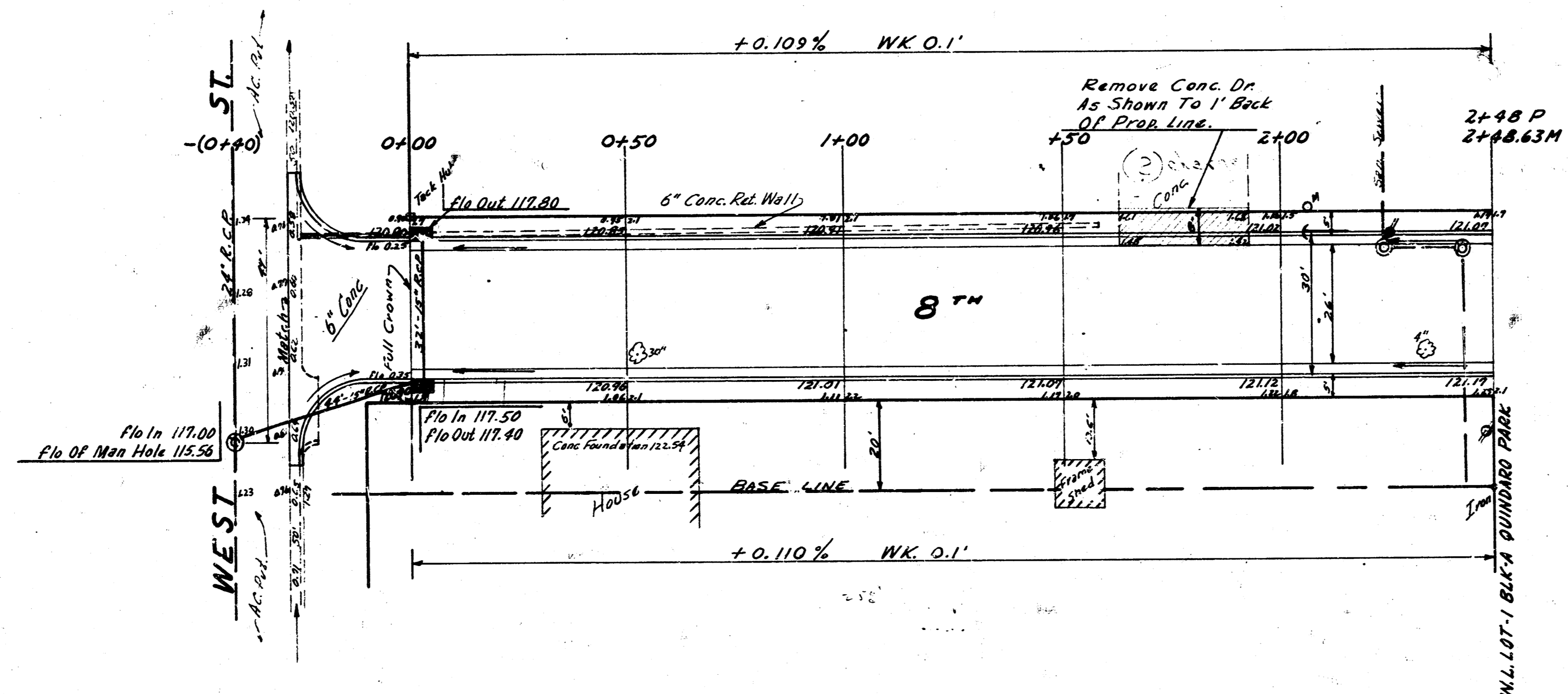


BM. 122.24 STANDARD ON SE COR. 9TH WEST ST.



BE SMITH
 CIVIL ENGINEER
 406
 1001
 CHICAGO, ILL.

Excavation		City	
Prop	195.7	City	23.1
+10%	43.6	+10%	2.3
	54.5		25.4



8TH ST.
 EL. WEST TO W.L. LOT 1-BLK A QUINDARO PARK
 26-2-30-AC.
 CITY OF WICHITA KANS.
 BE SMITH CITY ENGINEER
 APRIL 1957 PROJ NO C17-3