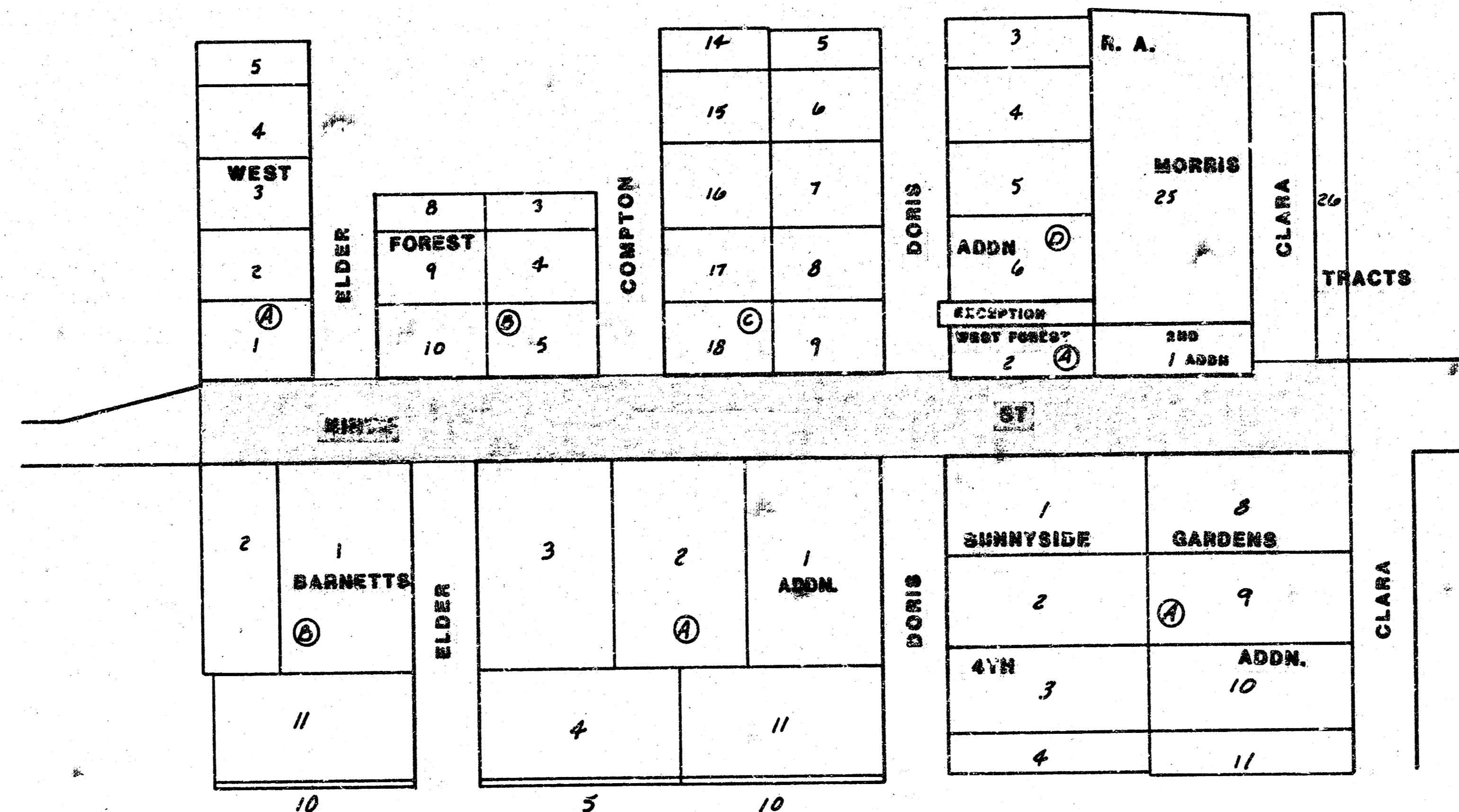


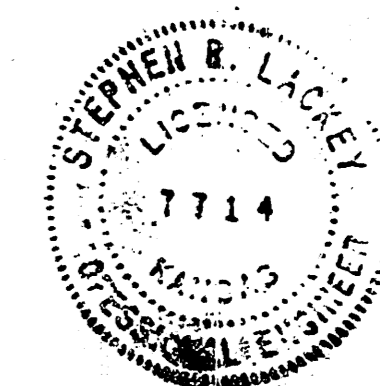
NINTH ST.

**W. L. LT. 1, BLK. A, WEST FOREST ADDN. TO THE
E. L. LT. 8, BLK A, SUNNYSIDE GARDENS 4th ADDN.**

PROJ. NO. 472 76 245 61156 000 000 001



4,915 S.Y. Manipulation

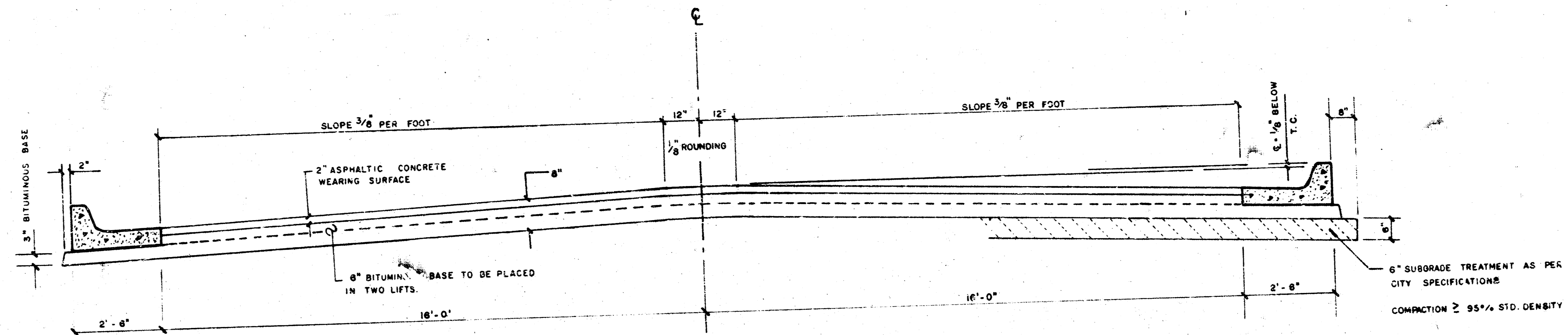


PROJECT DESCRIPTION		
PROJECT NUMBER		
BOOK NO. M6 21	APPROVED BY <i>[Signature]</i>	DATE 5-12-82
DRAWN BY R/12g	REVISOR	REVISED
CITY OF WICHITA		
DEPARTMENT OF ENGINEERING		
DIRECTOR OF ENGR./CITY ENGINEER R. W. BRUGGEMAN		SCALE 1"=20'

1/7 1/7

NINTH ST.

STA 0+00 TO STA. 9+00



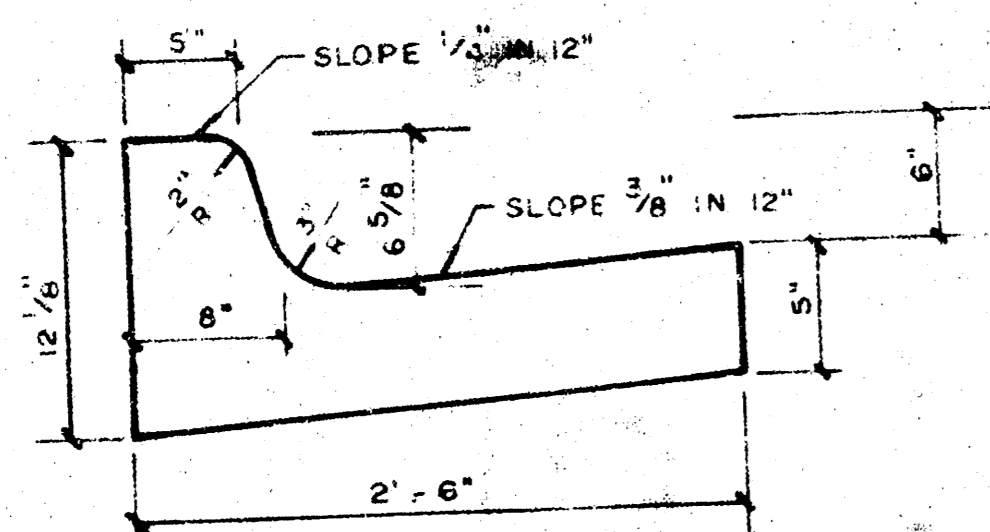
TYPICAL SECTION

37' ASPHALTIC CONCRETE PAVEMENT WITH BITUMINOUS BASE

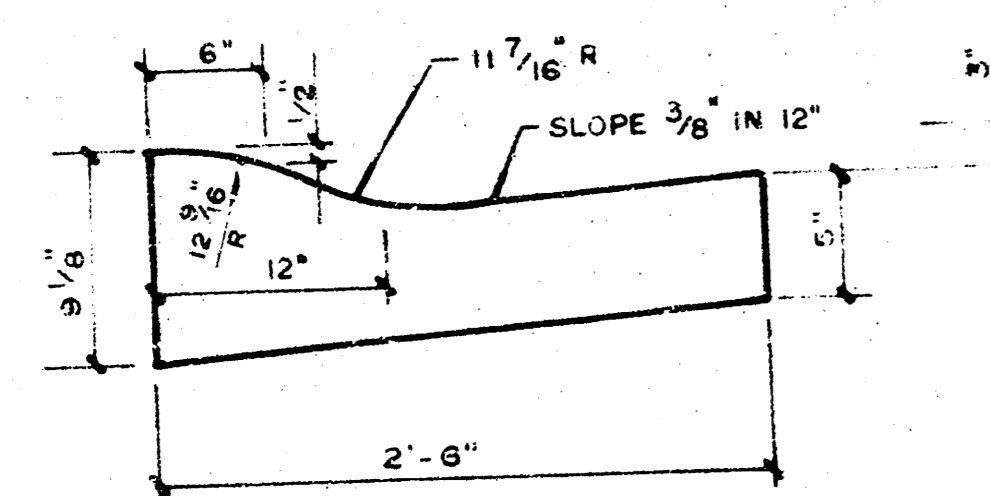
A TACK COAT OF EMULSIFIED ASPH(SS-1H or CSS-1H) SHALL BE APPLIED AT AN APPROXIMATE RATE 0.05 GALLONS PER SQ YD BETWEEN LIFTS OF ASPHALTIC MATERIALS WHEN ORDERED BY THE ENGINEER. TACK COAT WILL NOT BE PAID DIRECTLY AND SHALL BE CONSIDERED AS SUBSIDIARY TO PRICE BID FOR ASPHALTIC PAVEMENT. BITUMINOUS BASE AND ASPHALTIC CONCRETE WEARING SURFACE SHALL BE PLACED WITH A LAYDOWN MACHINE HAVING AUTOMATIC CONTROLS FOR CROWN AND GRADE. CONSTRUCTION JOINTS IN EACH LIFT SHALL BE STAGGERED A MINIMUM DISTANCE OF 1' WITH JOINTS IN PRECEDING LIFTS AND PLACED SUCH THAT A JOINT WILL BE CONSTRUCTED ON THE CENTERLINE IN THE TOP LIFT.

THE A.C. PAVEMENT BETWEEN THE COMBINED CURB AND GUTTER SHALL BE PAID AS SQ YDS 8" A.C. PAVEMENT (6" BITUMINOUS BASE). THE BITUMINOUS BASE UNDER THE COMBINED CURB AND GUTTER SHALL BE PAID AS SQ YDS 3" BITUMINOUS BASE.

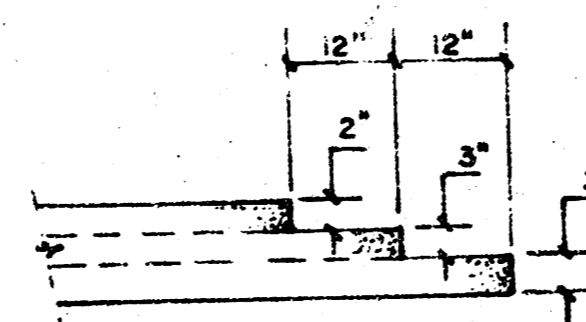
COMBINED CURB & GUTTER



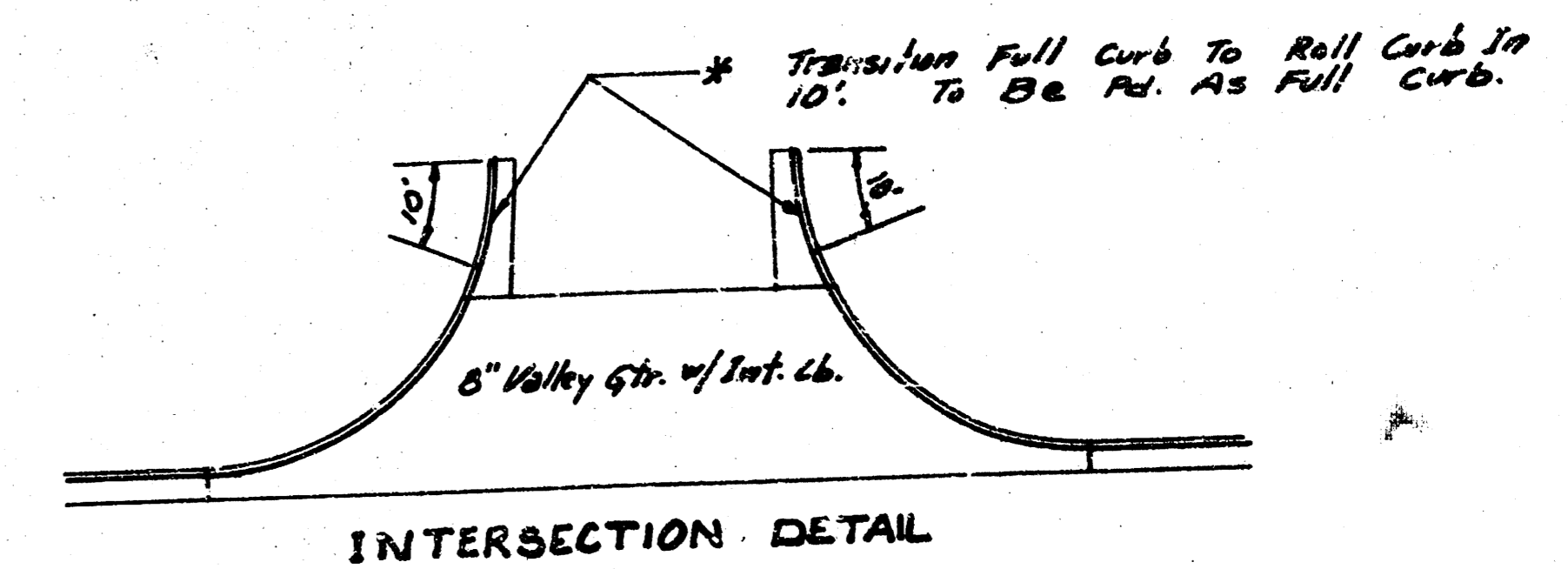
ROLL TYPE CURB & GUTTER



DETAIL OF TRANSVERSE CONSTRUCTION JOINTS



TRANSVERSE CONSTRUCTION JOINTS SHALL BE CONSTRUCTED IN FLEXIBLE BASE PAVEMENTS AT LOCATIONS WHERE PAVEMENT TEMPORARILY ENDS TO FACILITATE FUTURE PAVEMENT CONSTRUCTION AS SHOWN BY DETAIL. THE COST OF CONSTRUCTING THE TRANSVERSE CONSTRUCTION JOINTS SHALL NOT BE MEASURED OR PAID FOR DIRECTLY BUT SHALL BE INCLUDED IN THE BID PRICE FOR SQUARE YARDS OF A.C. PAVEMENT.

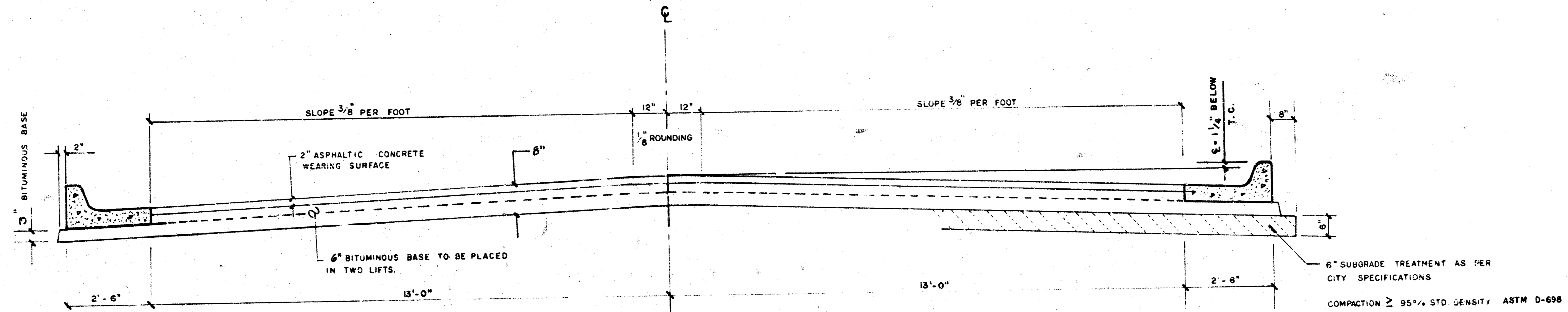


CITY OF WICHITA, KANSAS

472 76 245 81156 000 000 001

NINTH ST.

STA 9+87² TO STA.10+77²



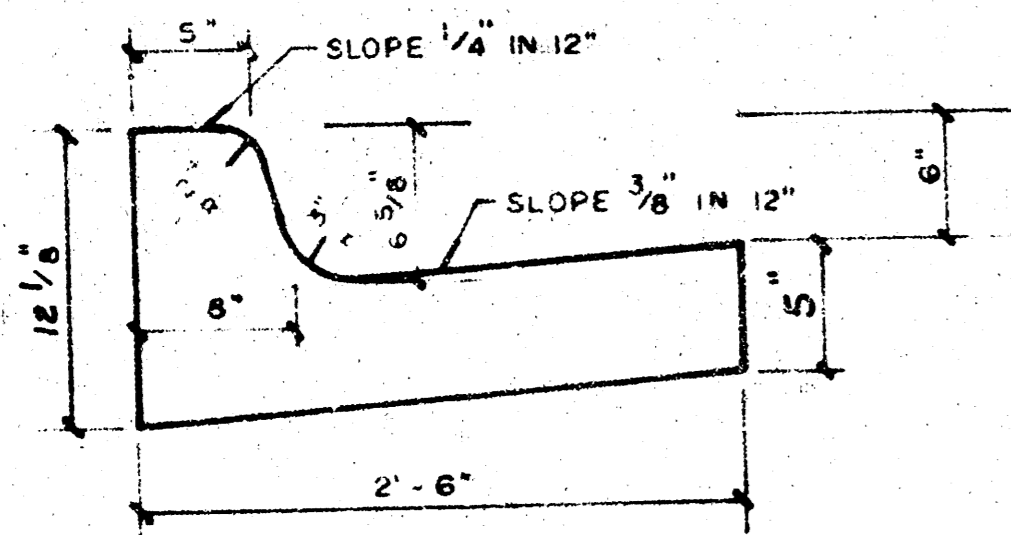
TYPICAL SECTION

31' ASPHALTIC CONCRETE PAVEMENT WITH BITUMINOUS BASE

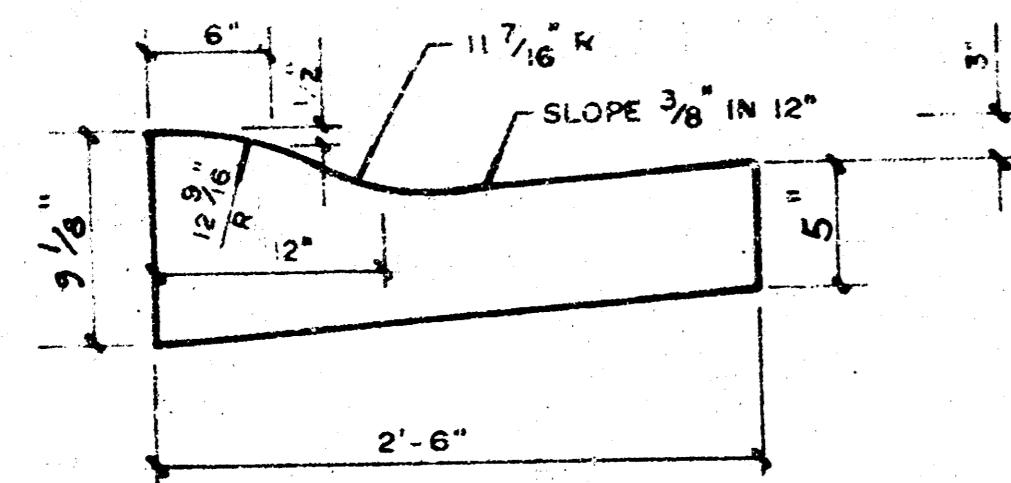
A TACK COAT OF EMULSIFIED ASPH(SS-1H or CSS-1H) SHALL BE APPLIED AT AN APPROXIMATE RATE 0.05 GALLONS PER SQ YD BETWEEN LIFTS OF ASPHALTIC MATERIALS WHEN ORDERED BY THE ENGINEER. TACK COAT WILL NOT BE PAID DIRECTLY AND SHALL BE CONSIDERED AS SUBSIDIARY TO PRICE BID FOR ASPHALTIC PAVEMENT. BITUMINOUS BASE AND ASPHALTIC CONCRETE WEARING SURFACE SHALL BE PLACED WITH A LAYDOWN MACHINE HAVING AUTOMATIC CONTROLS FOR CROWN AND GRADE. CONSTRUCTION JOINT IN EACH LIFT SHALL BE STAGGERED A MINIMUM DISTANCE OF 1' WITH JOINTS IN PRECEDING LIFTS AND PLACED SUCH THAT A JOINT WILL BE CONSTRUCTED ON THE CENTERLINE IN THE TOP LIFT.

THE A.C. PAVEMENT BETWEEN THE COMBINED CURB AND GUTTER SHALL BE PAID AS SQ YDS 6" A.C. PAVEMENT (6" BITUMINOUS BASE). THE BITUMINOUS BASE UNDER THE COMBINED CURB AND GUTTER SHALL BE PAID AS SQ YDS 3" BITUMINOUS BASE.

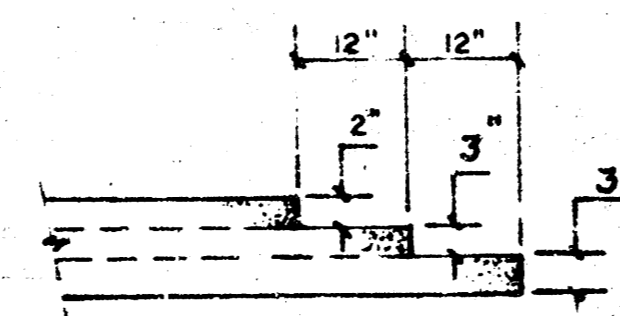
COMBINED CURB & GUTTER



ROLL TYPE CURB & GUTTER



DETAIL OF TRANSVERSE CONSTRUCTION JOINTS



TRANSVERSE CONSTRUCTION JOINTS SHALL BE CONSTRUCTED IN FLEXIBLE BASE PAVEMENTS AT LOCATIONS WHERE PAVEMENT TEMPORARILY ENDS TO FACILITATE FUTURE PAVEMENT CONSTRUCTION AS SHOWN BY DETAIL. THE COST OF CONSTRUCTING THE TRANSVERSE CONSTRUCTION JOINTS SHALL NOT BE MEASURED OR PAID FOR DIRECTLY BUT SHALL BE INCLUDED IN THE BID PRICE FOR SQUARE YARDS OF A.C. PAVEMENT.

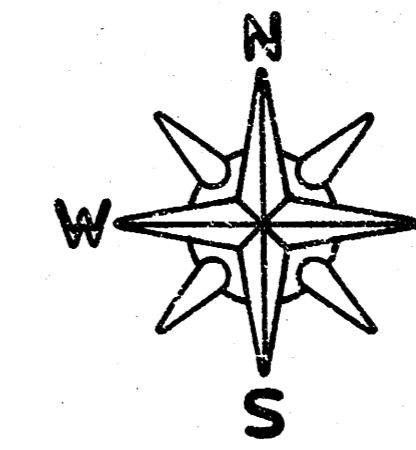
CITY OF WICHITA, KANSAS

472 76 245 81156 000 000 001

BM = 126.29 - City Std. Disc. 34' E. & 42' S. OF
 E'S. Hoover & Ninth.
 BM = 126.64 - City Std. Disc. 93' W. & 42' S. OF
 E'S. Anna & Ninth.
 BM = 126.15 - RR Spk. W. R. PP SE Cor.
 Ninth & Elder.

* - Transition Full Curb To Roll Curb In Last
 10' OF Radius. See Detail Sh. No. 2.
 ⊕ - Indicates Wheelchair Ramp Const.

SUB-GRADE
 TYPE OF SUB-GRADE TREATMENT SHALL BE DETERMINED BY THE FIELD ENGINEER. SUB-GRADE TREATMENT MAY CONSIST OF LIME TREATMENT, CEMENT TREATMENT, SUB-GRADE MODIFICATION, OR ANY COMBINATION OF THESE.

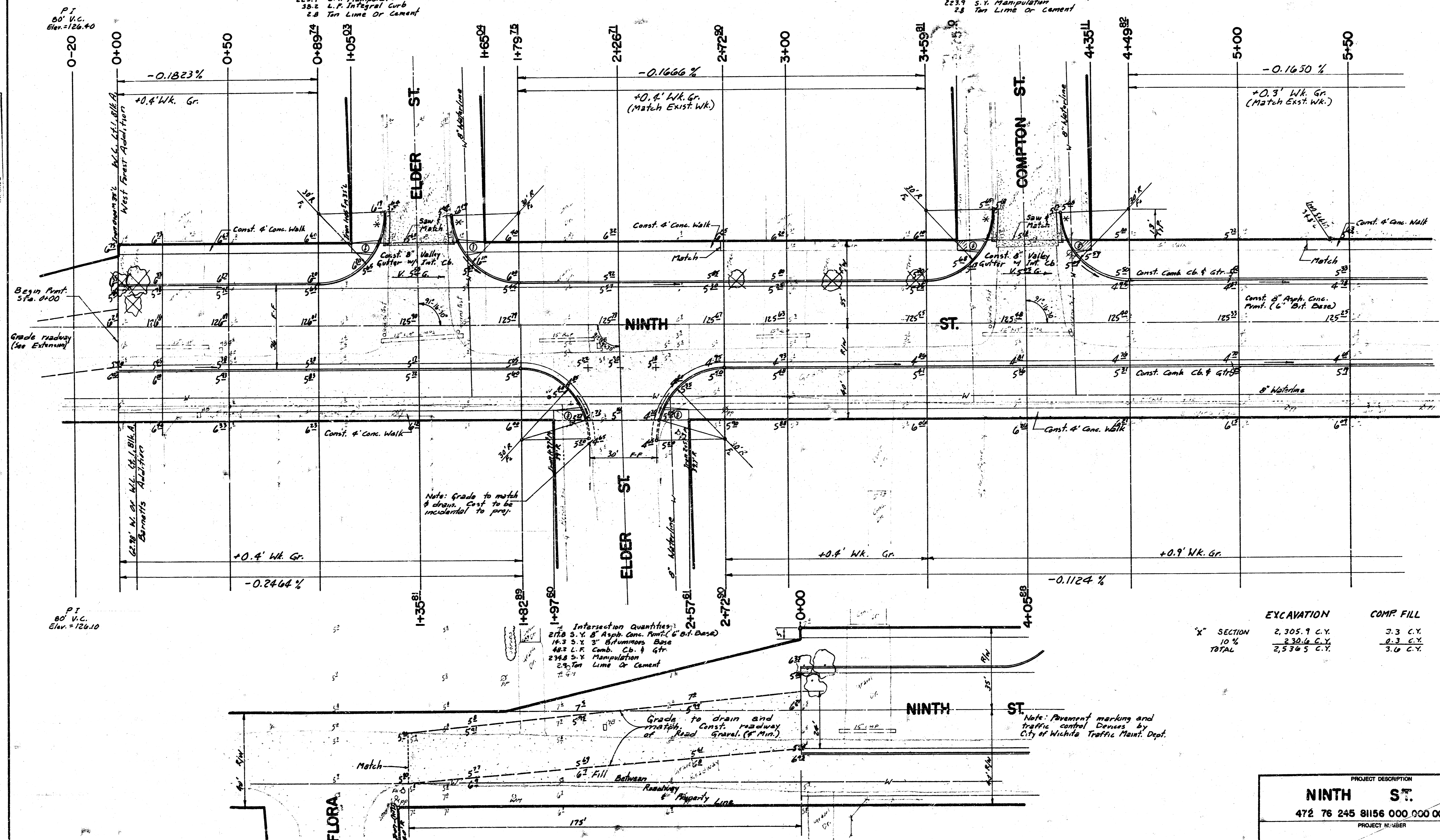


Intersection Quantities
 106.7 S.Y. 8" Asph. Conc. Pmnt. (6" Bit. Base)
 25.0 L.F. Comb. Cb. & Gtr.
 11.3 S.Y. 3" Bituminous Base
 103.8 S.Y. 6" Conc. & 2" Asph. Conc. Base
 223.9 S.Y. Manipulation
 38.2 L.F. Integral Curb
 2.8 Ton Lime Or Cement

Note: Trees To Be Removed Are Marked Thus: Except That Any Tree Which In The Opinion Of The Engineer Can Be Saved, Shall Be Spared.

Intersection Quantities
 106.7 S.Y. 8" Asph. Conc. Pmnt. (6" Bit. Base) Scale: 1" = 20'
 25.0 L.F. Comb. Cb. & Gtr.
 11.3 S.Y. 3" Bituminous Base
 38.2 L.F. Integral Curb
 103.8 S.Y. V.G. 6" Conc. & 2" Asph. Conc. Base
 223.9 S.Y. Manipulation
 2.8 Ton Lime Or Cement

Green
 Key
 Checked



	EXCAVATION	COMP. FILL
X SECTION	2,305.9 C.Y.	3.3 C.Y.
10 %	230.6 C.Y.	0.3 C.Y.
TOTAL	2,536.5 C.Y.	3.6 C.Y.

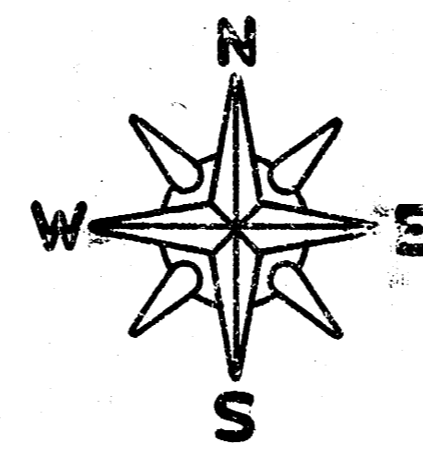
Note: Grade to match & drain. Const. to be incidental to proj.

Intersection Quantities:
 277.8 S.Y. 8" Asph. Conc. Pmnt. (6" Bit. Base)
 14.3 S.Y. 3" Bituminous Base
 48.2 L.F. Comb. Cb. & Gtr.
 234.8 S.Y. Manipulation
 2.8 Ton Lime Or Cement

Grade to drain and match at Roadway of Road Gravel (8" Min.)

Note: Pavement marking and traffic control devices by City of Wichita Traffic Maint. Dept.

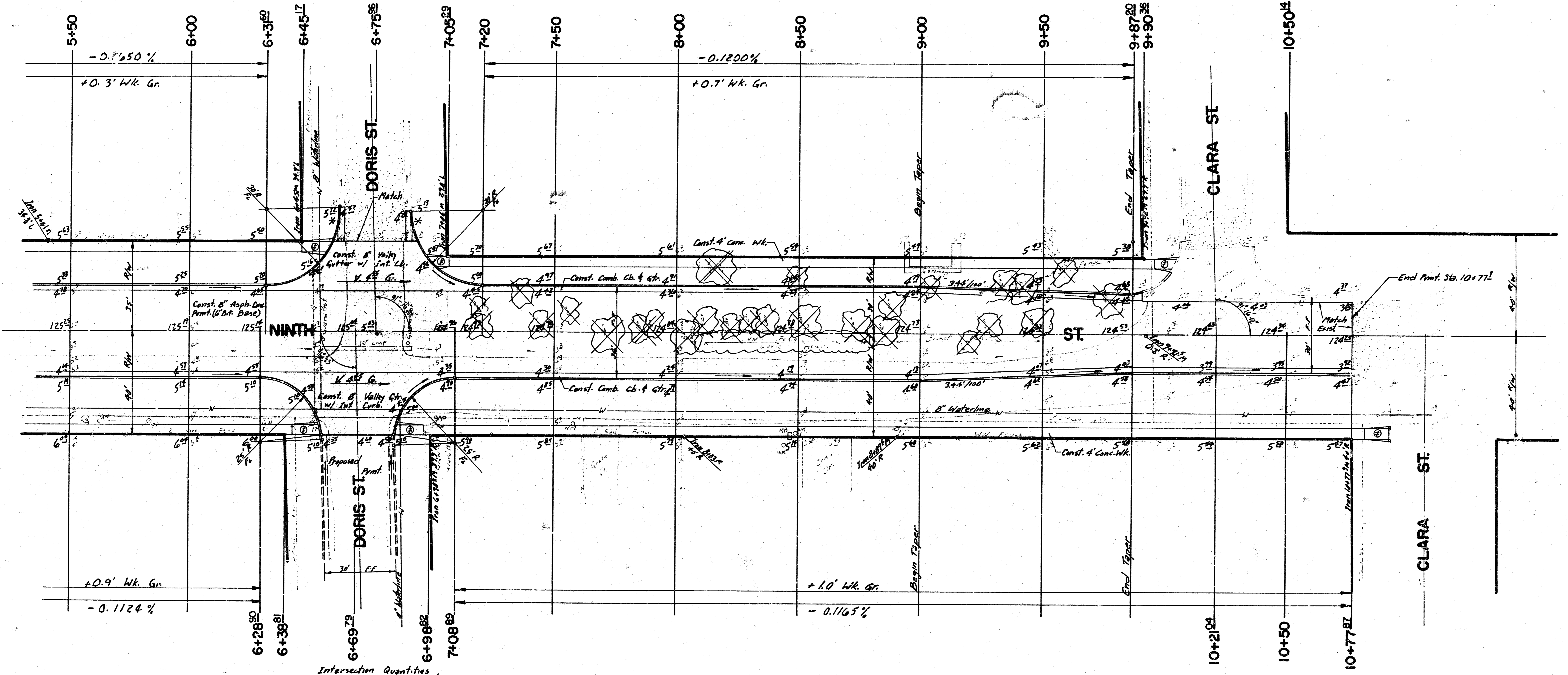
PROJECT DESCRIPTION
NINTH ST.
 472 76 245 81156 000 000 001
 PROJECT NUMBER



SCALE: 1"=20'

Intersection Quantities
102.7 S.Y. 8" Asph. Conc. Pmt. (6" B.T. Base)
24.0 L.F. Comb. Cb. & Gtr.
11.3 S.Y. 3" Bituminous Base
38.2 L.F. Integral Curb
193.8 S.Y. V.G. 6" Conc. & 2" Asph. Conc. Base
232.5 S.Y. Manipulation
1.1 Ton Lime Or Cement

Intersection Quantities
84.7 S.Y. 8" Asph. Conc. Pmt. (6" B.T. Base)
88.7 S.Y. Manipulation
1.1 Ton Lime Or Cement



Intersection Quantities
106.7 S.Y. 8" Asph. Conc. Pmt. (6" B.T. Base)
116.9 L.F. Integral Curb
116.9 S.Y. V.G. 6" Conc. & 2" Asph. Conc. Base
222.5 S.Y. Manipulation
2.8 Ton Lime Or Cement

PROJECT DESCRIPTION
NINTH ST
472 76 245 811.000 000 001
PROJECT NUMBER

