

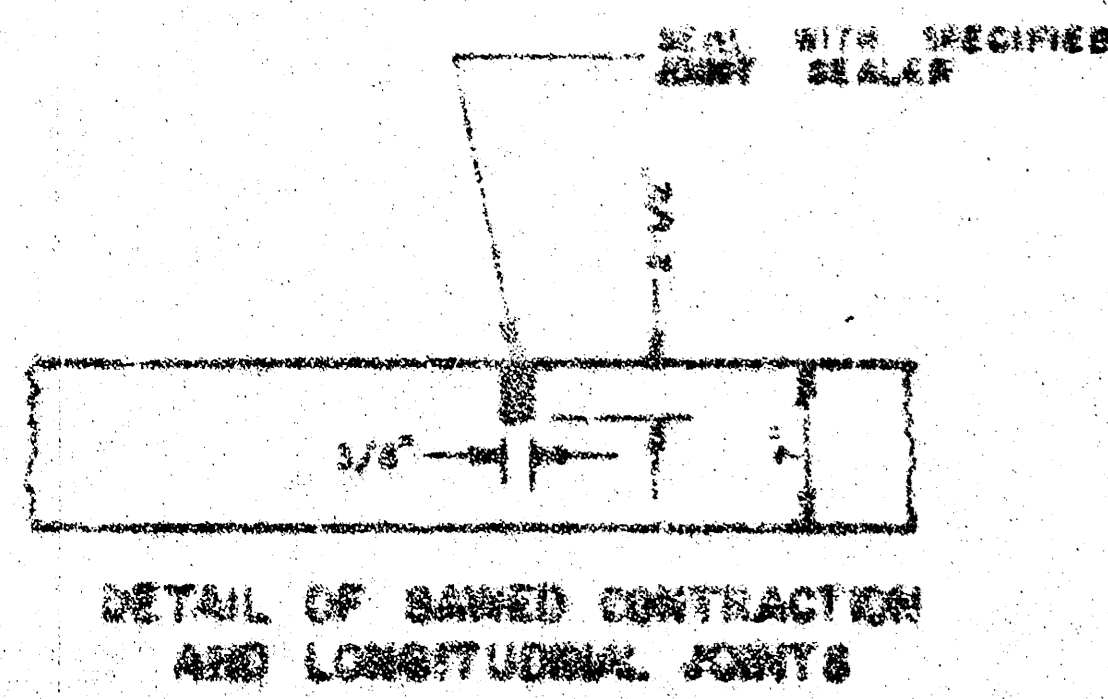
NINTH ST.

E. L. ST. PAUL AVE. TO W. L. EDWARDS AVE.

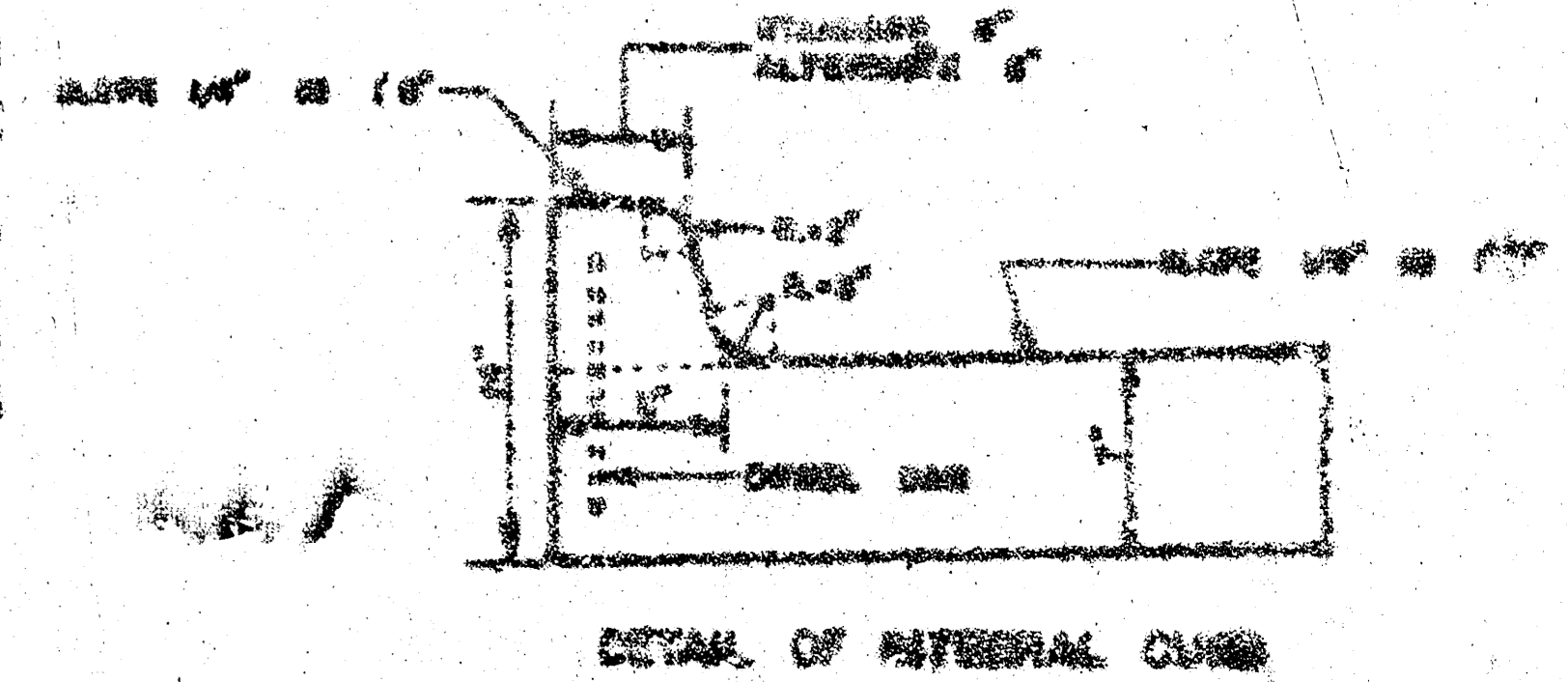
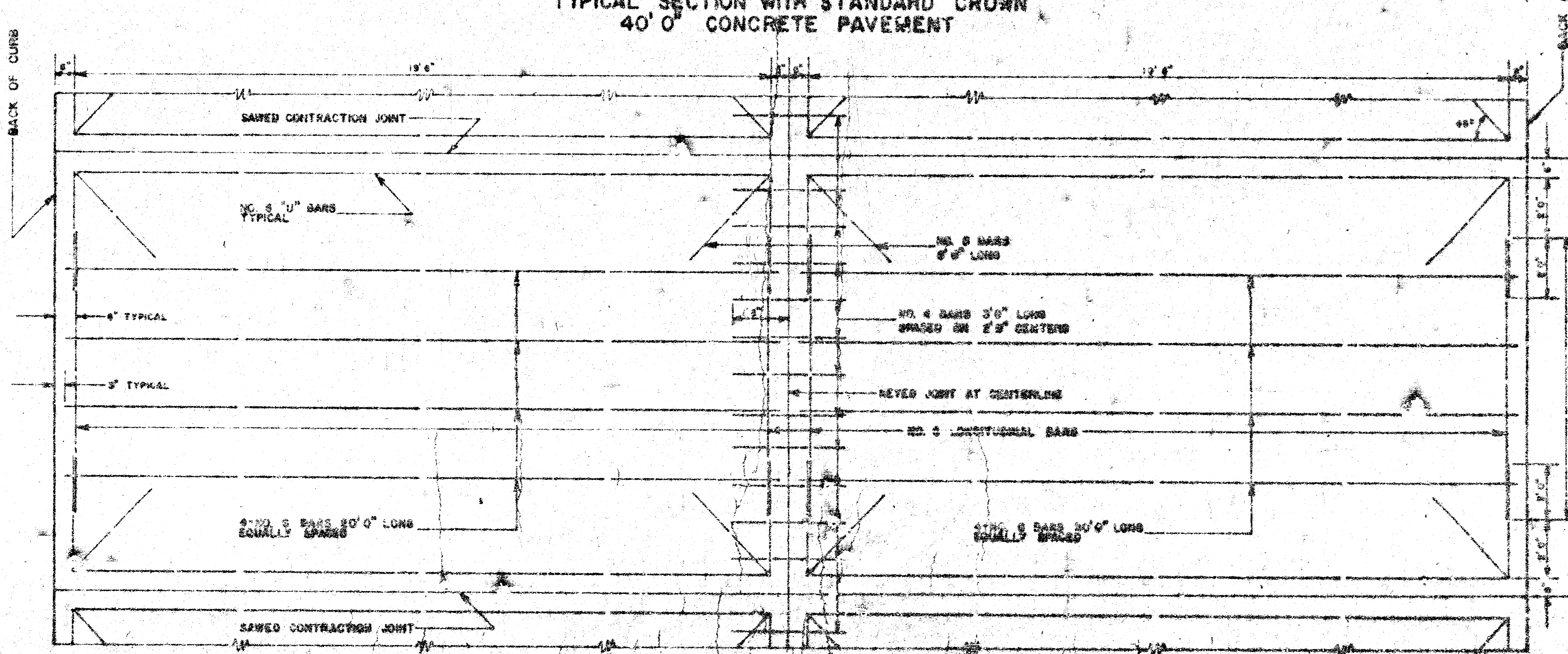
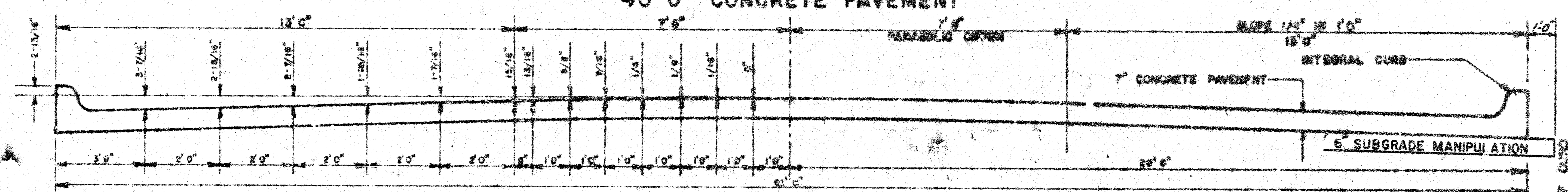
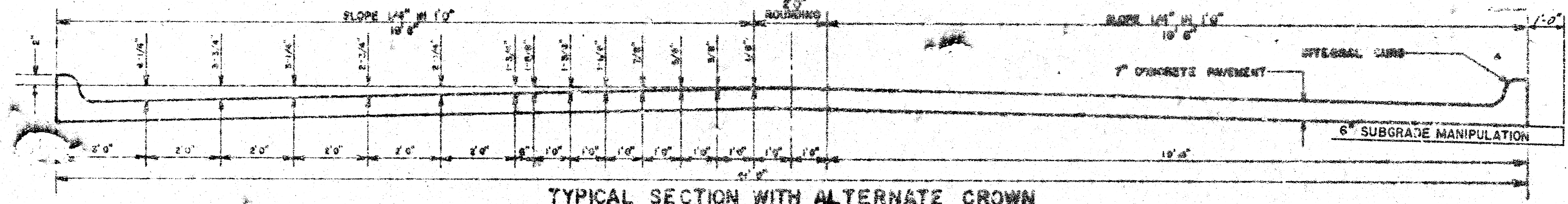
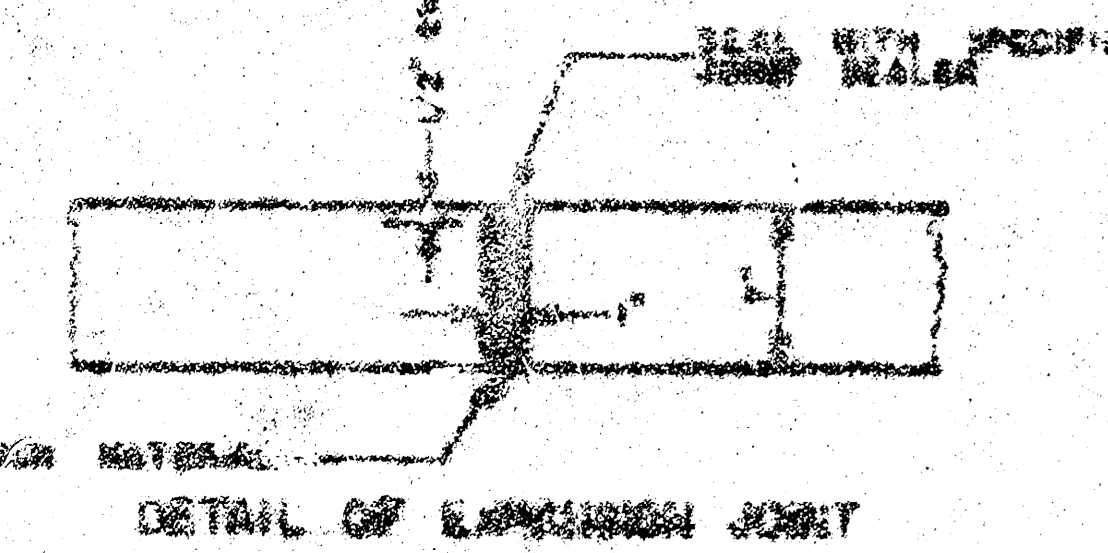
PROJ. NO. DAKG 577065  
CITY OF WICHITA, KANSAS  
R. W. LINN, CITY ENGINEER

SYMMETRICAL ABOUT CENTERLINE

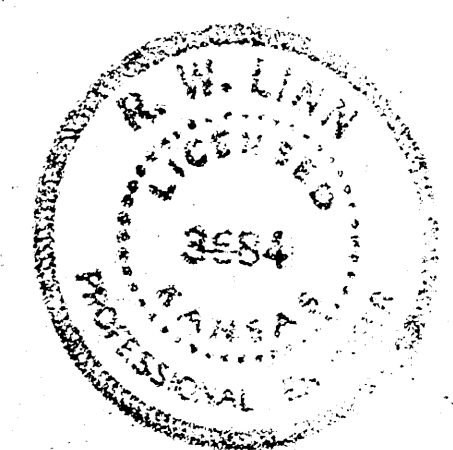
SAWED CONTRACTION JOINTS ARE TO BE CONSTRUCTED AT 50' 0" INTERVALS EXCEPT WHERE AN EXPANSION JOINT IS USED.



EXPANSION JOINTS ARE TO BE CONSTRUCTED AT 120' 0" INTERVALS

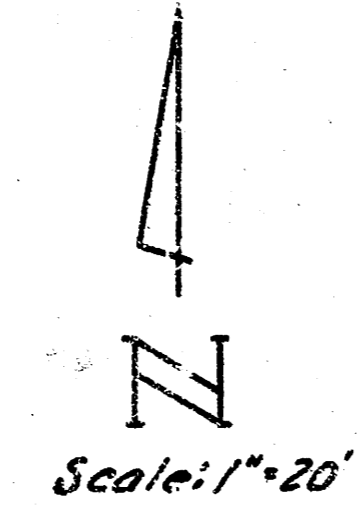


INTEGRAL CURB SHALL BE CUT THROUGH TO PAVEMENT IN UNIFORM LENGTH OF NOT MORE THAN TEN FOOT INTERVALS BETWEEN EXPANSION JOINTS. EXPANSION JOINTS HAVING THE SAME THICKNESS AS THE EXPANSION JOINTS IN THE PAVEMENT SHALL BE CONSTRUCTED IN THE INTEGRAL CURB AT THE SPECIFIED LOCATIONS. NUMBER 4 OR NUMBER 6 BARS SHALL BE INSTALLED IN THE INTEGRAL CURB AS SHOWN ON APPROXIMATELY 2' 0" CENTERS. PAVEMENT GRADES SHOWN ON PLANS ARE FOR STANDARD CROWN.

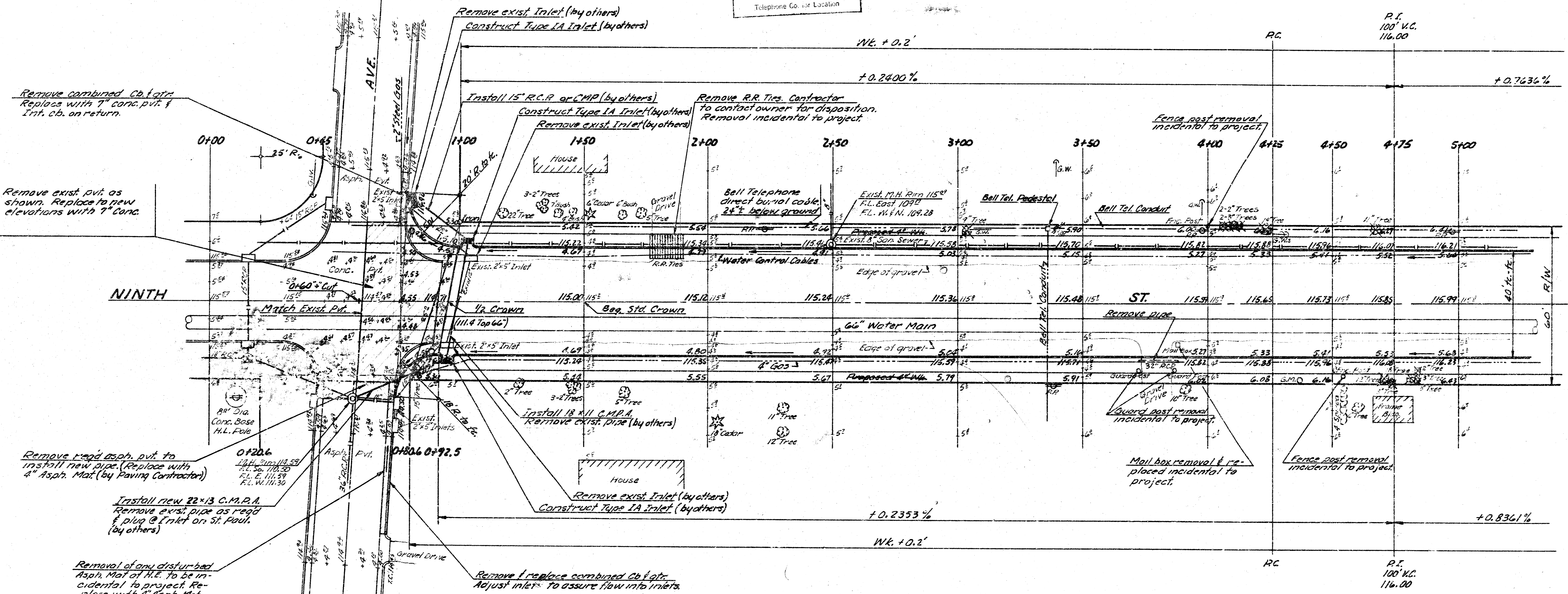


1/3

B.M. 116.77 S.W. Cor. Conc. Box on 66" water main, 6' 9" E. of E. McLean  
 B.M. 117.02 Top S. Ch. 9" @ E.L. Edwards S.  
 B.M. 117.60 Top bolt, N. face base H.L.P., S.W. Cor. 9" @ St. Paul



**CAUTION**  
**UNDERGROUND UTILITIES**  
 Please check with K.G. & E. or Southwestern Bell Telephone Co. for Location



Remove combined Ch. & Int. Replaces with 7" conc. pvt. & Int. Ch. on return.

Remove exist. pvt. as shown. Replace to new elevations with 7" Conc.

Remove road asphalt pvt. to install new pipe. (Replace with 4" Asphalt Mat. (by Paving Contractor))

Install new 22"x13" C.M.P.A. Remove exist. pipe as road & plug @ Inlet on St. Paul. (by others)

Removal of any disturbed Asphalt Mat. to be incidental to project. Replace with 4" Asphalt Mat.

NOTE TO FIELD ENGINEER & CONTRACTOR  
 Grade parking and clear right-of-way for proposed work. Compact all in-streetwork and to be constructed elsewhere.

to match existing @ R/W. Trees to be saved where possible.

SUB-GRADE  
 TYPE OF SUB-GRADE TREATMENT SHALL BE DETERMINED BY THE FIELD ENGINEER. SUB-GRADE TREATMENT MAY CONSIST OF LIME TREATMENT, CEMENT TREATMENT, SUB-GRADE MODIFICATION, OR ANY COMBINATION OF THESE.

EARTHWORK			
EXCAVATION		COMPACTED FILL	
PROP.	CITY	PROP.	CITY
437.4 C.Y.	58.0 C.Y.	49.0 C.Y.	2.4 C.Y.
+10% 43.7	+10% 5.8	+10% 4.9	+10% .2
481.1 C.Y.	63.8 C.Y.	53.9 C.Y.	2.6 C.Y.

Total Manipulation = 2631 S.Y.

NINTH ST.  
 E.L. ST. PAUL AVE. TO W.L. EDWARDS AVE.

PROJ. NO. DAKC 577065

