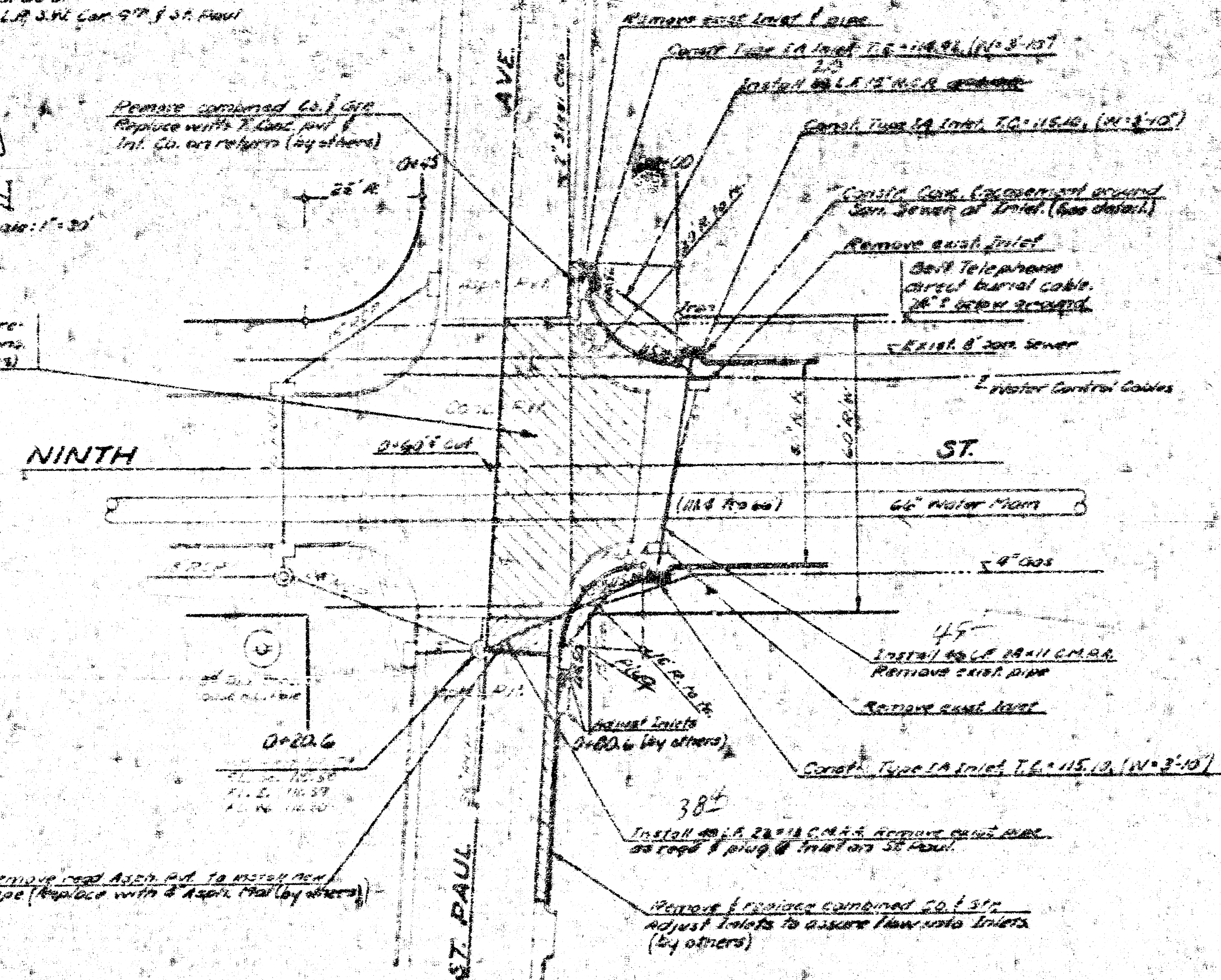
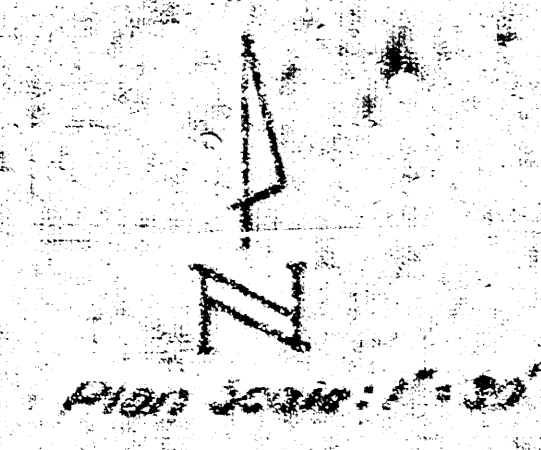
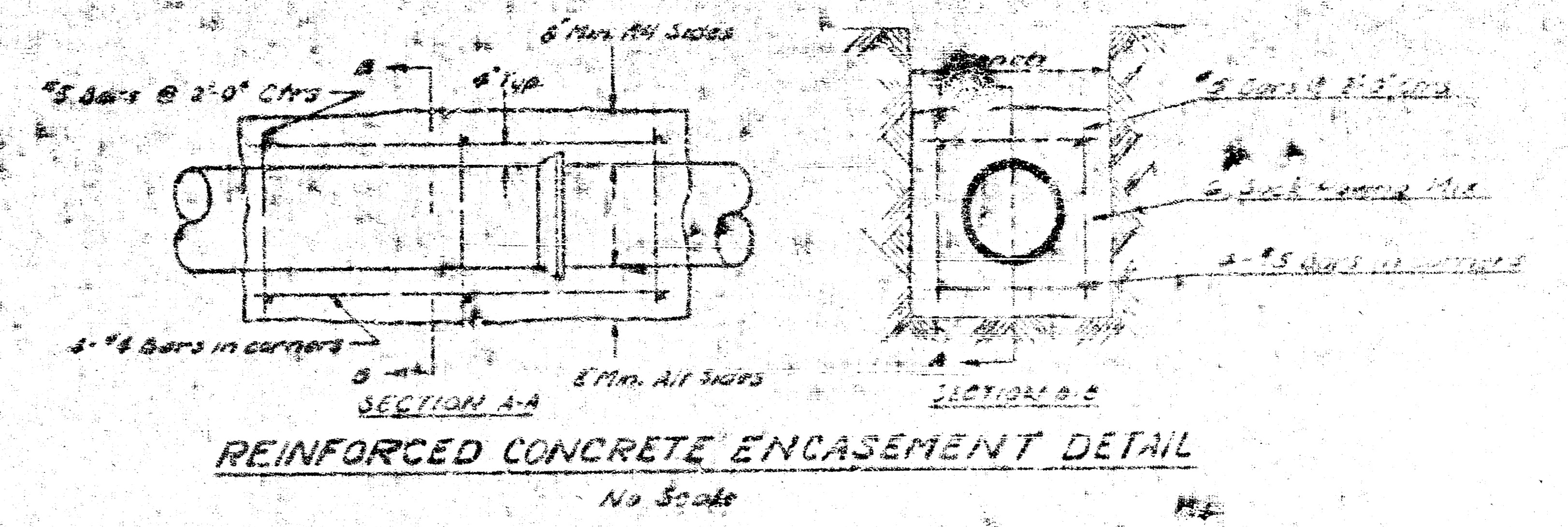


40' 11.25" S.W. Cor. Box on 6" water main, 6' 4" @ 45° E. of 8' 10" L.S.
 3' 11" 11.25" Top S. Co. 4" @ 45° E. Edwards S.
 3' 11" 11.25" Top S. Co. 4" @ 45° E. Edwards S.

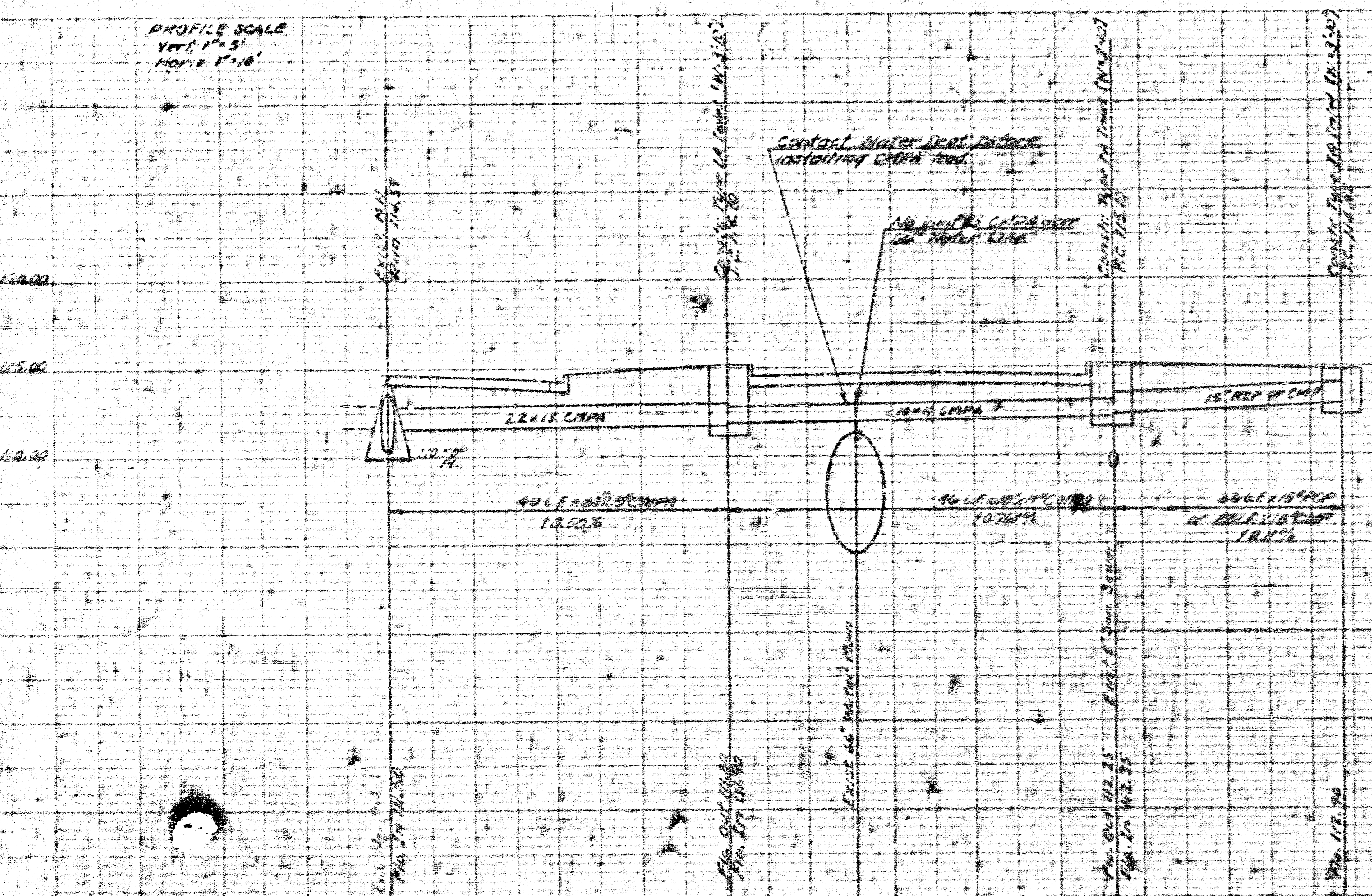


Note: Begin & end concrete encasement of a joint in the clay pipe

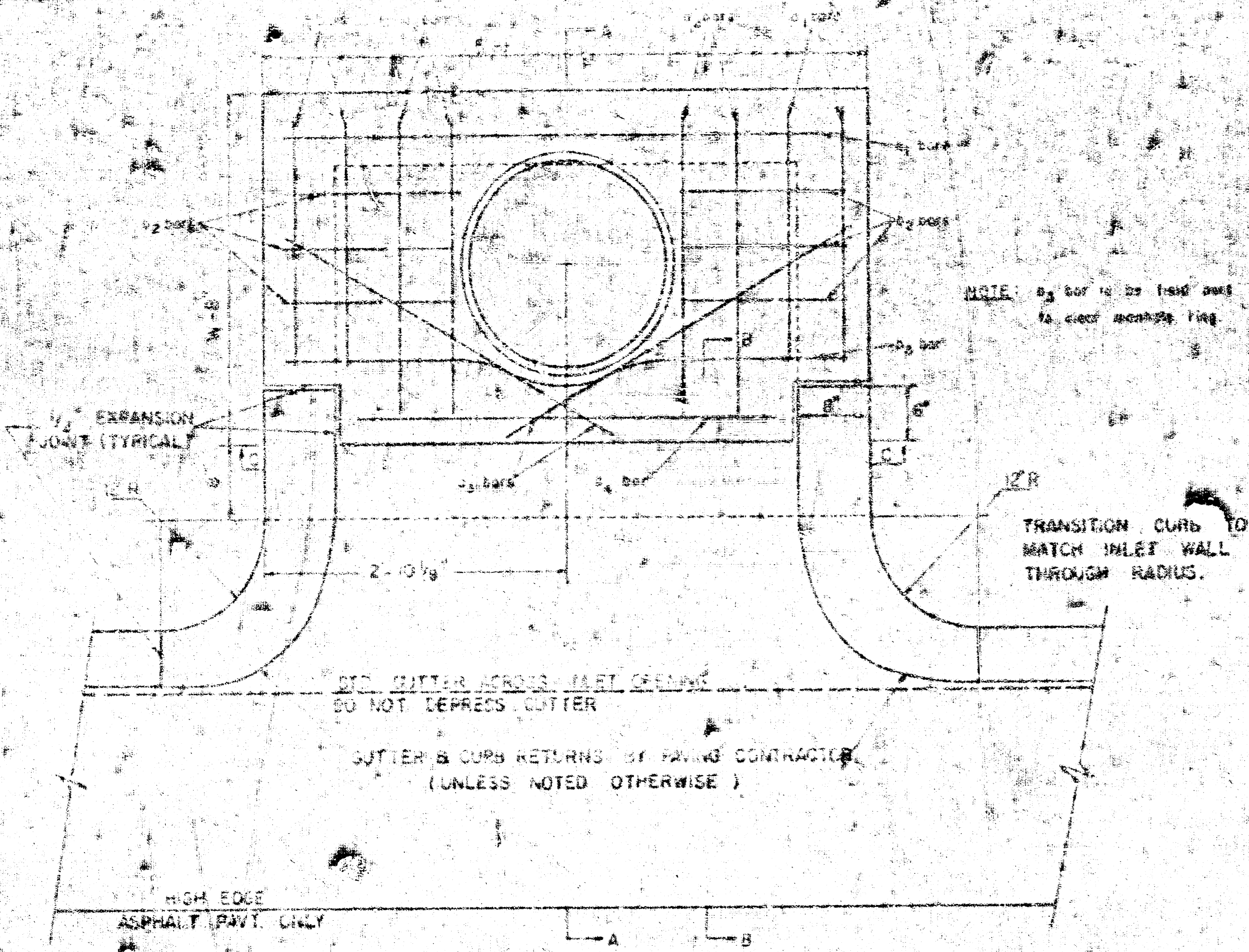


CAUTION
UNDERGROUND
UTILITIES
 Please check with K. S. E. or
 2025 Water Bell
 Telephone Co. for location

PROFILE SCALE
 Vert. 1" = 5'
 Horiz. 1" = 10'



DRAINAGE
 IN CONNECTION WITH PAVING
 NINTH ST.
 FROM W. ST. PAUL AVE. TO W. EDWARDS
 CITY OF WICHITA, KANSAS
 R.W. LINN CITY ENGINEER
 DATE PROJ. NO. DAKO 511

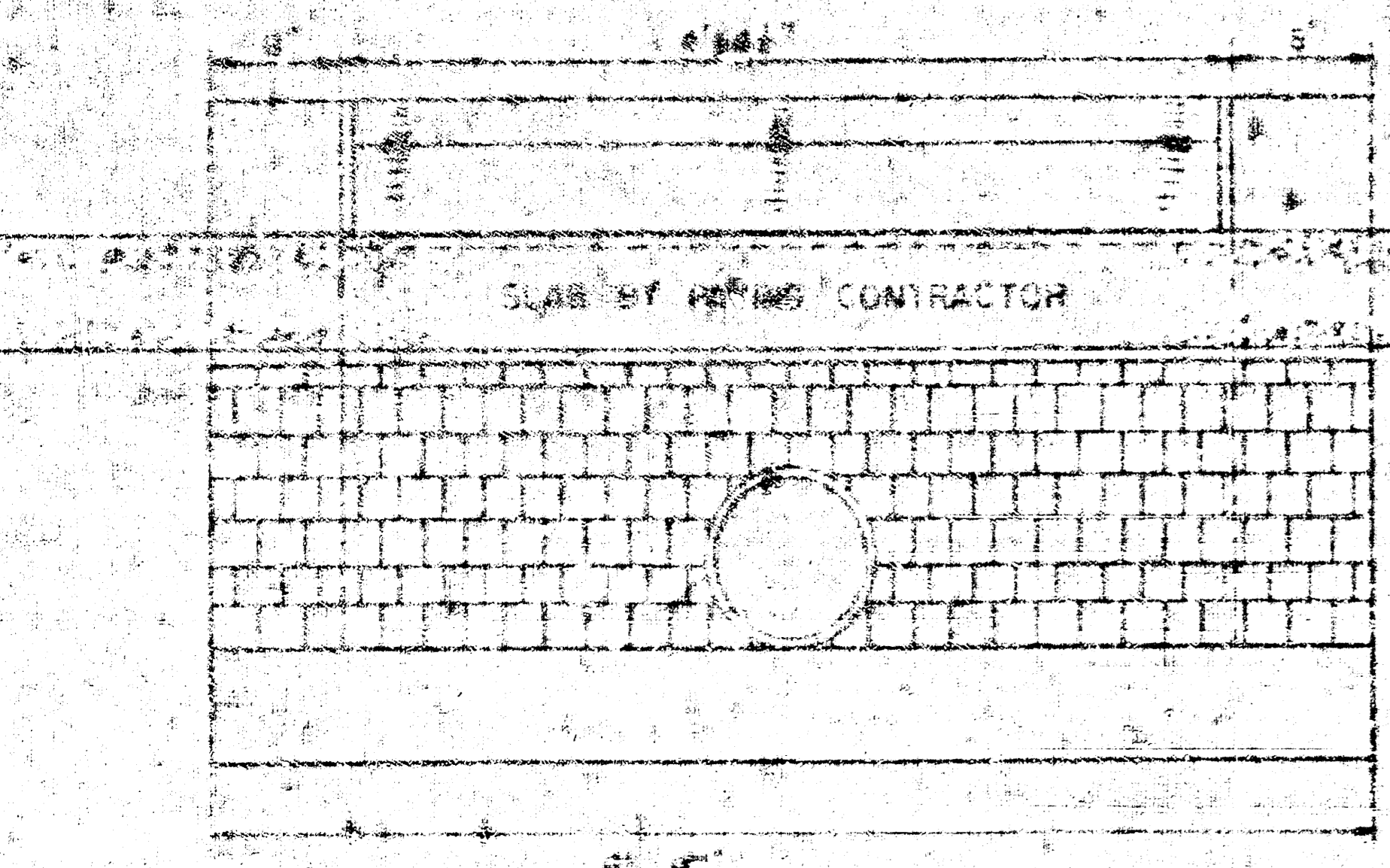


PLAN (SCALE: 1" = 1'0")

STEEL SCHEDULE

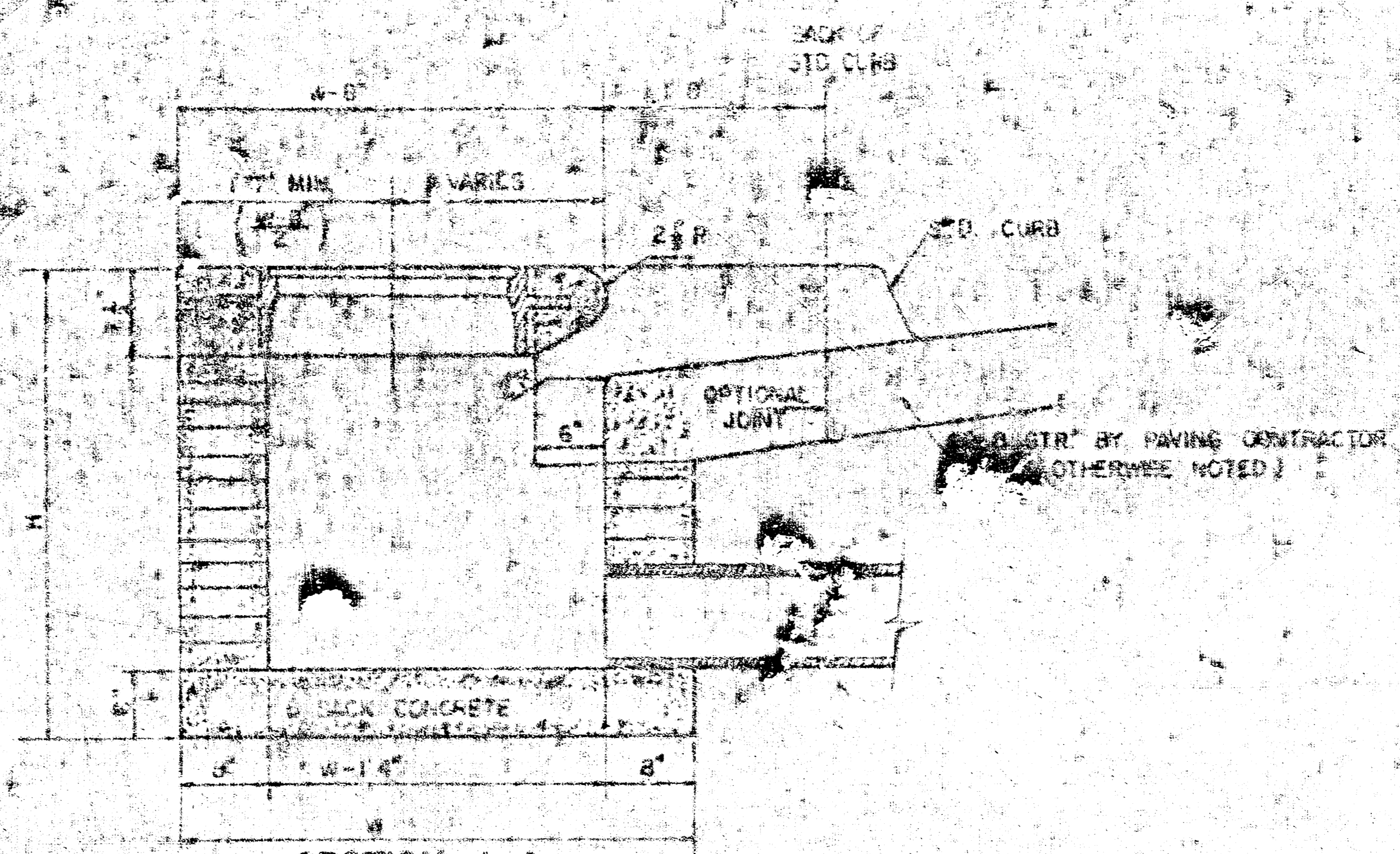
BAR NUMBER	BAR SIZE											WT. LBS.
	1	2	3	4	5	6	7	8	9	10	11	
1	4"	5"	3"	5"	---	---	---	1 7/8"	5"	4"	---	53
2	5"	7"	4"	---	---	---	---	5"	5"	4"	---	72
3	5"	9"	5"	---	---	---	---	1 7/8"	5"	4"	---	91
4	5"	9"	5"	---	---	---	---	3"	1 7/8"	5"	4"	110

NOTE: d_2 BARS TO BE PLACED APPROX. 2" BELOW TOP OF INLET COVER.



SECTION C-C (SCALE: 1" = 1'0")

BRICK FOR INLET CONSTRUCTION SHALL CONFORM WITH THE LATEST REVISION OF THE AMERICAN SOCIETY FOR TESTING AND MATERIALS DESIGNATION C-22 FOR MANHOLE BRICK GRADE MS.



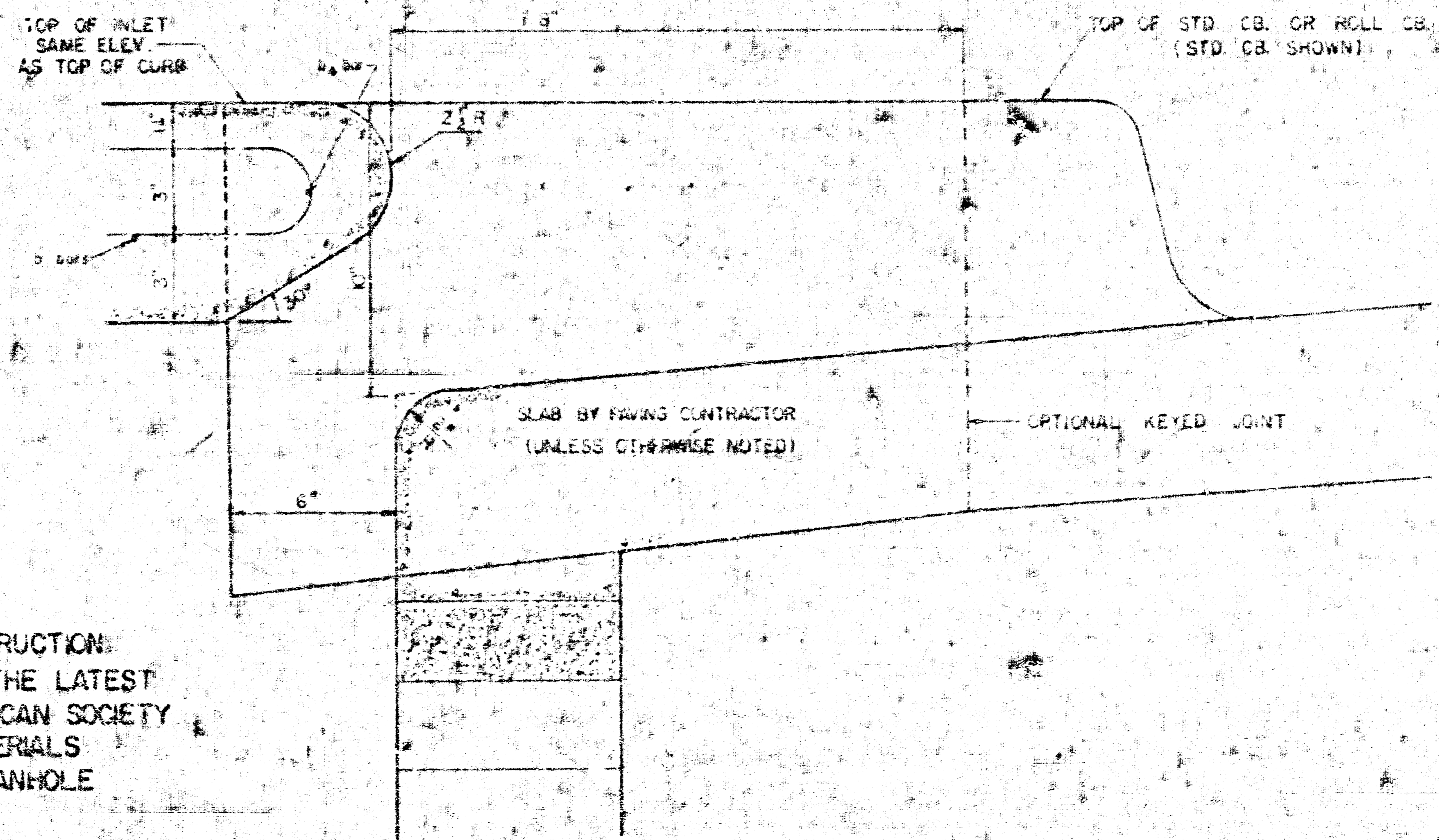
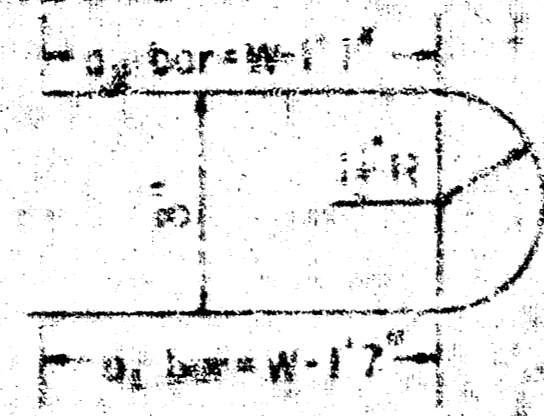
SECTION A-A (SCALE: 1" = 1'0")

STANDARD CURB INLET PRECAST TOPS			
INLET SIZE	PRECAST TOP SIZE	NO. BARS	GROSS VOLUME
3'0"	22" X 56" X 7 1/2"	2# & 5# SMALLER	0.42'
4'0"	42" X 56" X 7 1/2"	3# & 5#	0.55'
5'0"	52" X 56" X 7 1/2"	4# & 4#	0.68'
6'0"	62" X 56" X 7 1/2"	5# & 6#	0.82'

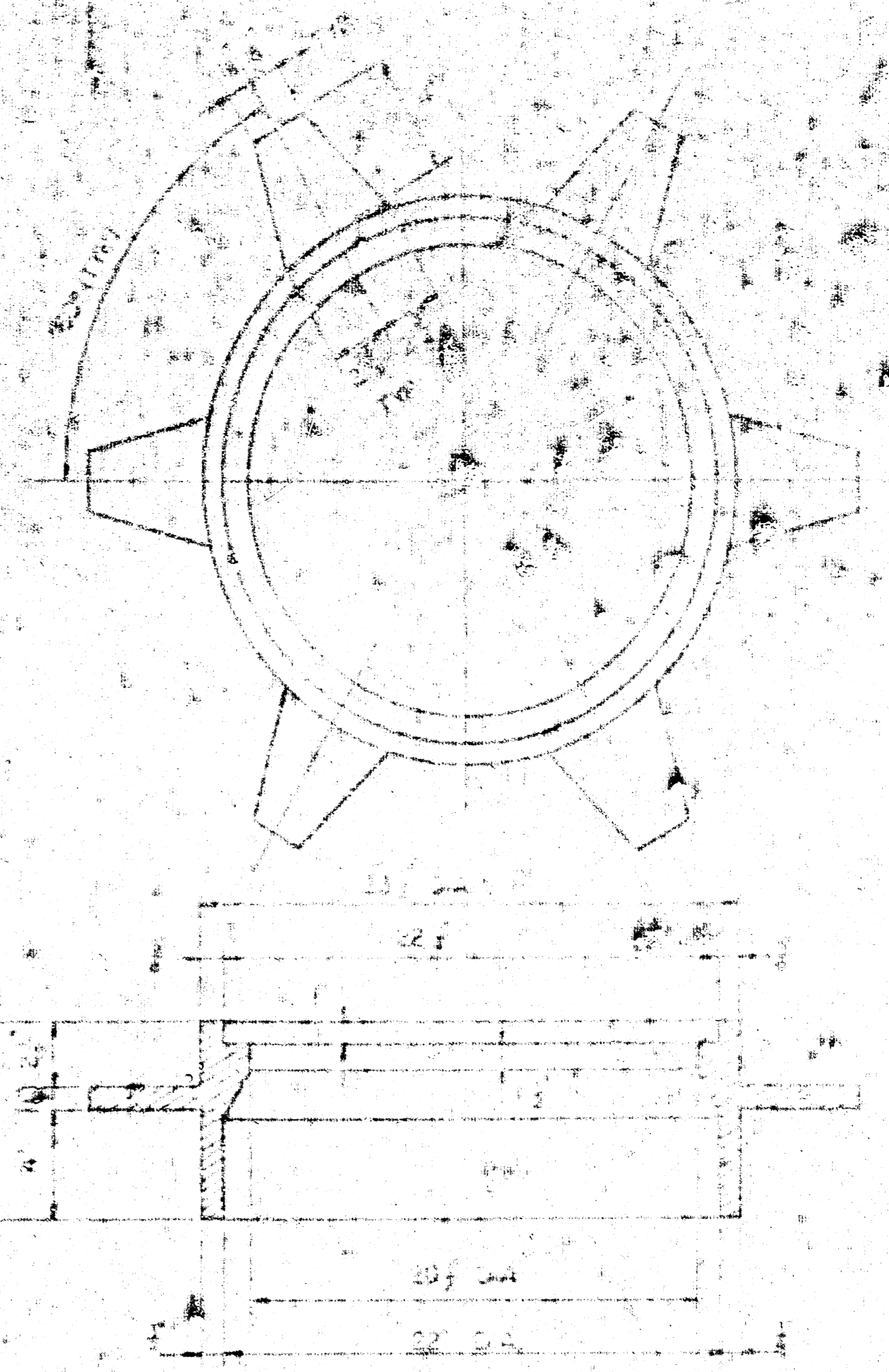
* GROSS VOLUME

NOTE: CONCRETE TOPS TO BE INSTALLED ON THIN MORTAR CUSHION TO INSURE FULL SUPPORT ALONG BRICK WALLS. CONCRETE TOPS MAY BE CAST IN PLACE OR PRECAST CONCRETE FOR INLET TOPS AND FLOORS SHALL BE 4-SACK PAVING MIX.

BENDING DIAGRAM



SECTION B-B (SCALE: 1" = 1'0")



SEE SEWER APPURTENANCES DETAIL SHEET FOR MANHOLE COVER.

THIS TYPE INLET TO BE USED WHEN PAVEMENT IS ASPHALT PAVEMENT WITH ASPHALT BASE COURSE AND/OR WHEN PAVEMENTS HAVE ROLL CURB

DRAINAGE IN CONNECTION WITH PAVING NORTH FROM EL. ST. PAUL AVE TO W.L. EDWARDS

PROJ. NO. DARD 577055

DETAIL
STANDARD TYPE IA CURB INLET
(SET BACK LOCATION)
CITY OF WICHITA, KANSAS
R. W. LINN - CITY ENGINEER
FEBRUARY 1975

