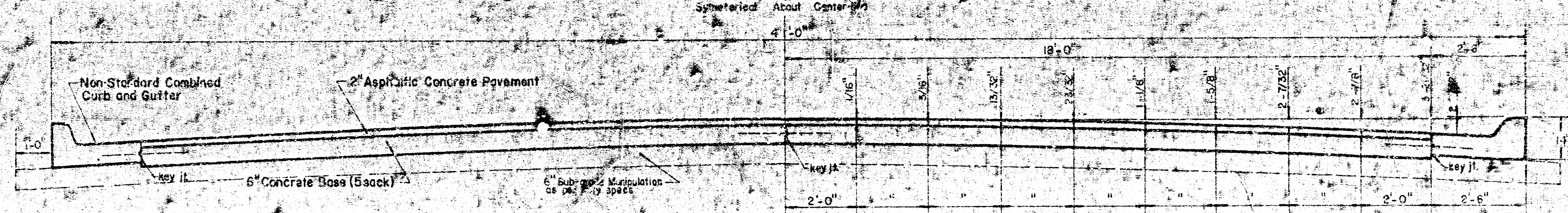


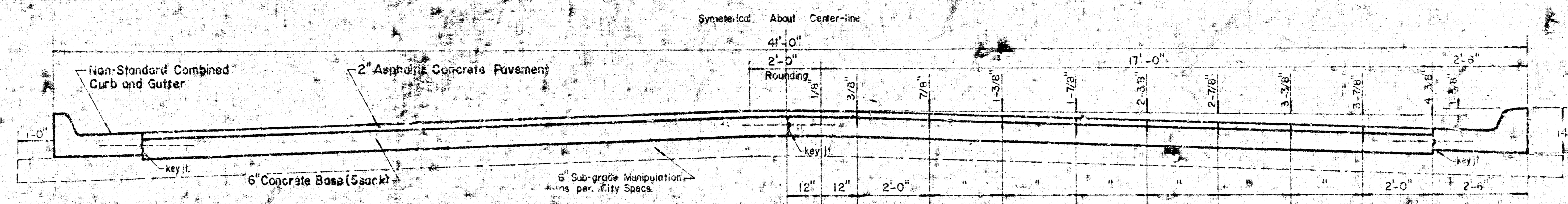
9TH  
W. L. EDWARDS AVE

PROJ. NO. DAKC 569060  
CITY OF WICHITA, KANSAS  
R. W. LINN, City Engineer

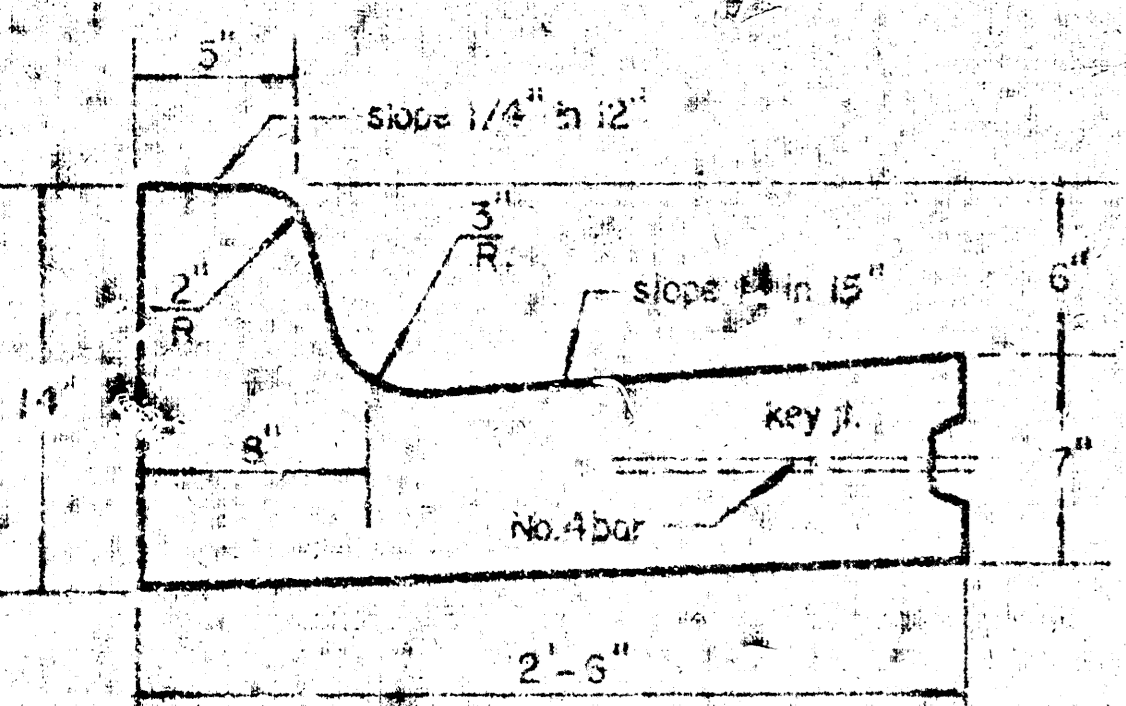
STREET  
W. L. MCLEAN BLVD.



TYPICAL SECTION WITH STANDARD CROWN  
40'-0" ASPHALTIC CONCRETE PAVEMENT

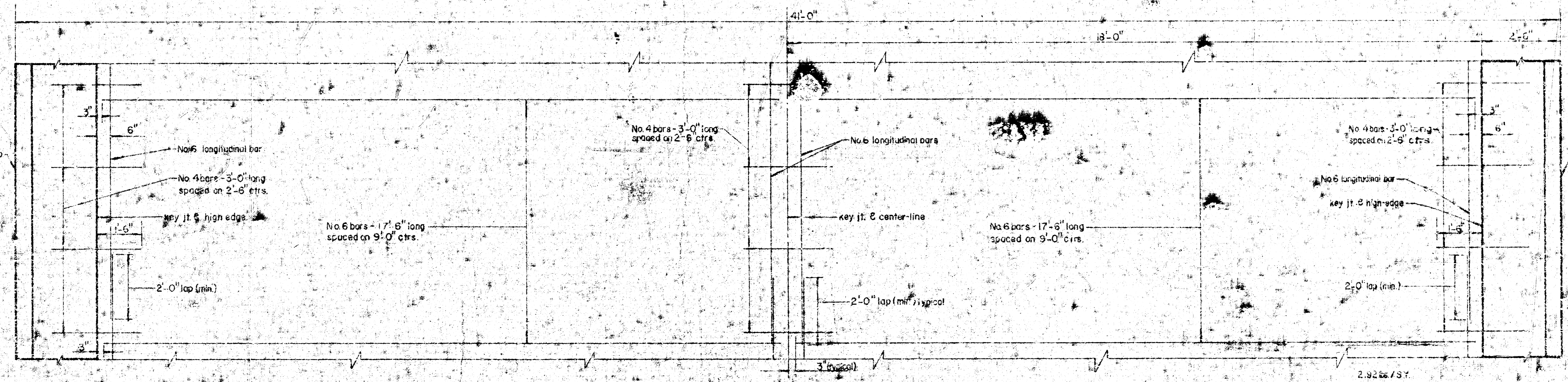


TYPICAL SECTION WITH ALTERNATE CROWN  
40'-0" ASPHALTIC CONCRETE PAVEMENT

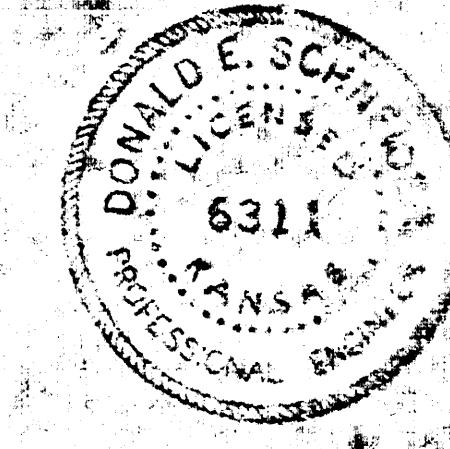


DETAIL OF NON-STANDARD  
COMBINED CURB AND GUTTER

GENERAL NOTES:  
1. Contraction joints may be constructed in combined curb and gutter by sawing with an approved concrete saw. The cut shall extend 2-1/2" below the surface of the gutter and curb.  
2. Contraction joints shall have a maximum spacing of 10 ft. The gutter section will be completely filled.  
3. Pavement Grades shown on plans are for standard.



TYPICAL STEEL PATTERN  
40'-0" ASPHALTIC CONCRETE PAVEMENT



B.M. 11677 S.W. COR CONC BOX - 60" WATER MAIN - NINTH STREET 35' EAST MCLEAN BLVD.  
 B.M. 11916 N.E. Mueller Fire Hydrant N.E. COR NINTH & EDWARDS

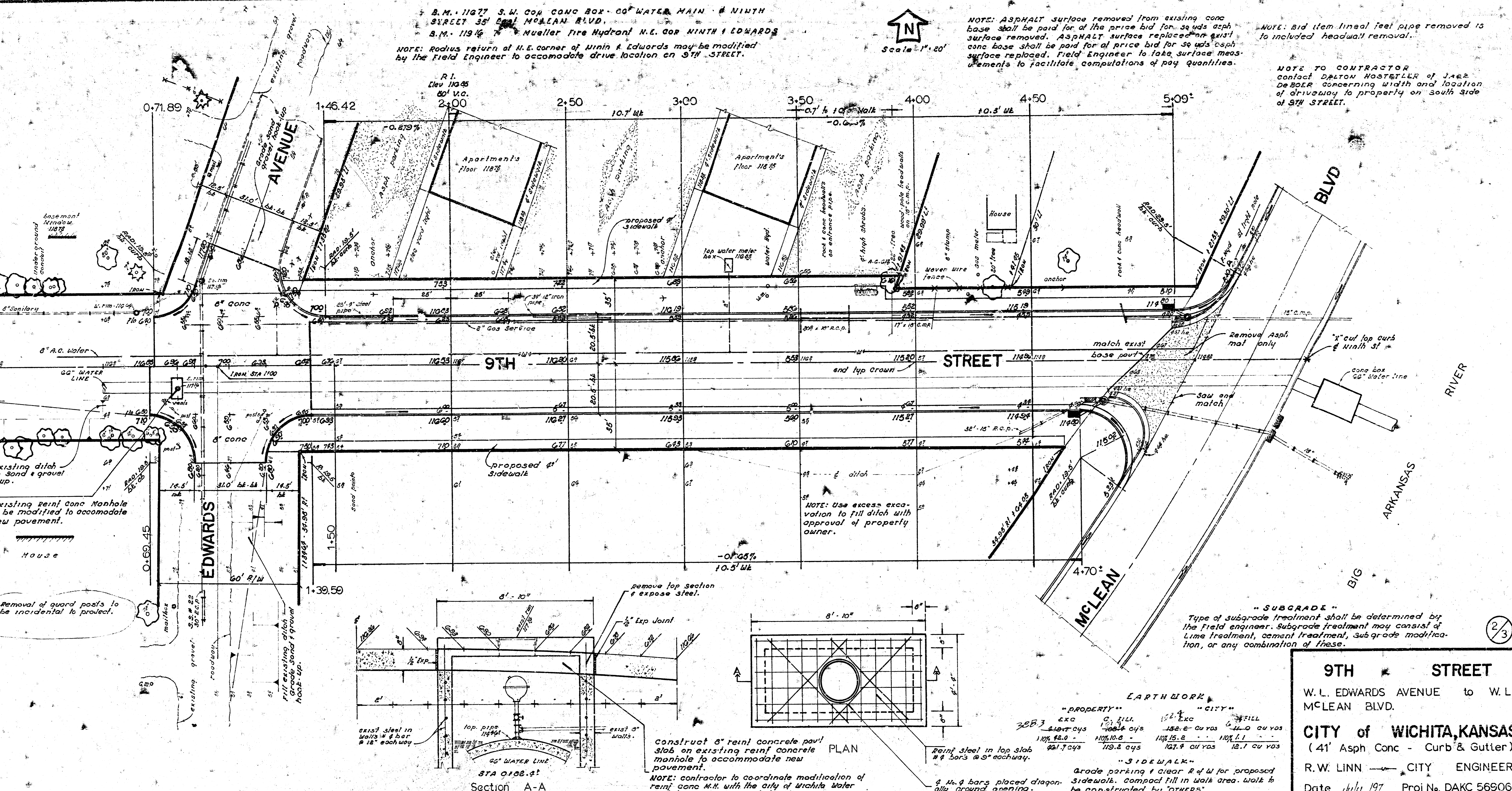


NOTE: ASPHALT surface removed from existing conc base shall be paid for at the price bid for 30 yds asph surface removed. ASPHALT surface replaced on exist conc base shall be paid for at price bid for 30 yds asph surface replaced. Field Engineer to take surface measurements to facilitate computations of pay quantities.

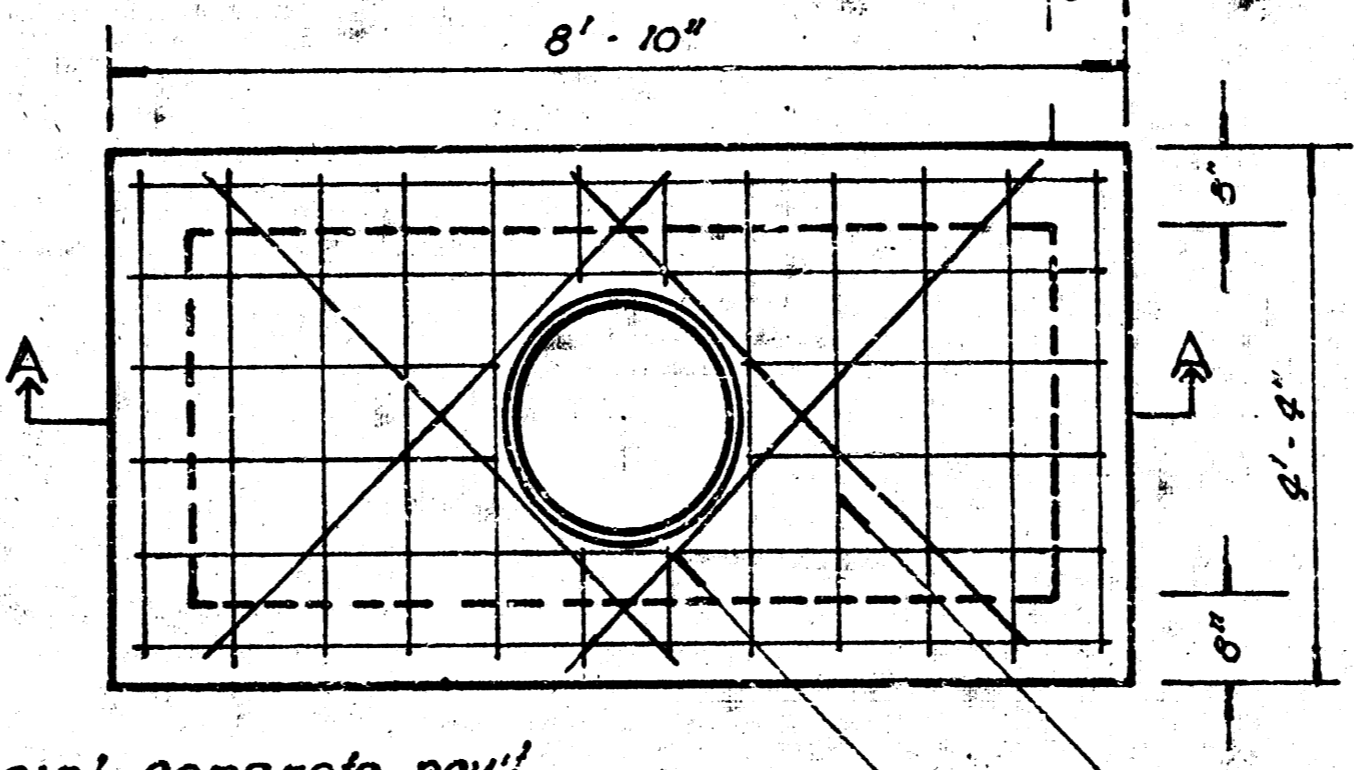
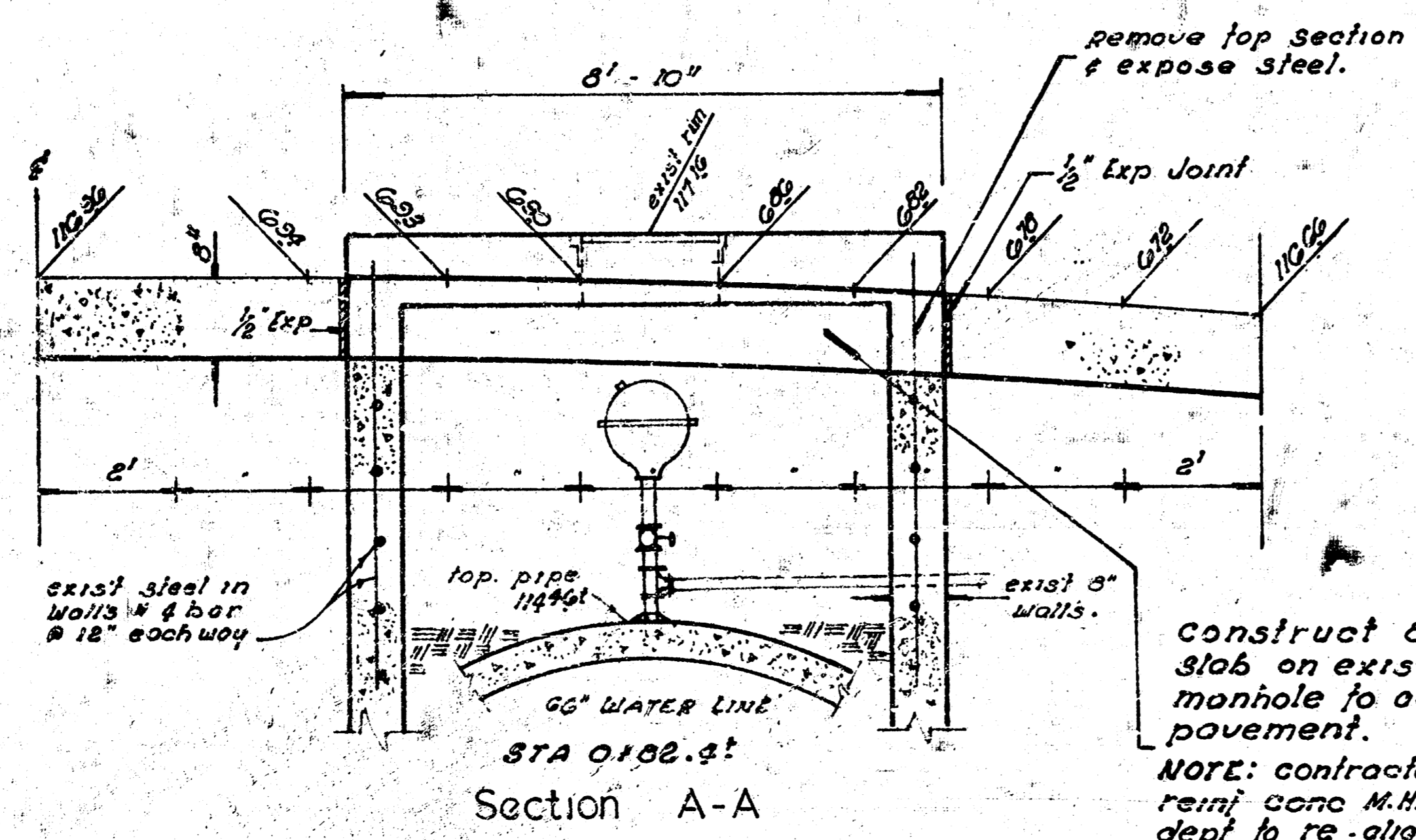
NOTE: Bid item lineal feet pipe removed is to include headwall removal.

NOTE TO CONTRACTOR  
 Contact DALTON HOSTETTER of J&E DEBOER concerning width and location of driveway to property on south side of 9TH STREET.

NOTE: Radius return at N.E. corner of Ninth & Edwards may be modified by the Field Engineer to accommodate drive location on 9TH STREET.



NOTE: Use excess excavation to fill ditch with approval of property owner.



Construct 6" reinf concrete pav' slab on existing reinf concrete manhole to accommodate new pavement.  
 NOTE: contractor to coordinate modification of reinf conc M.H. with the city of Wichita Water dept to re-align air relief valve.

"SUBGRADE"  
 Type of subgrade treatment shall be determined by the field engineer. Subgrade treatment may consist of Lime treatment, cement treatment, subgrade modification, or any combination of these.

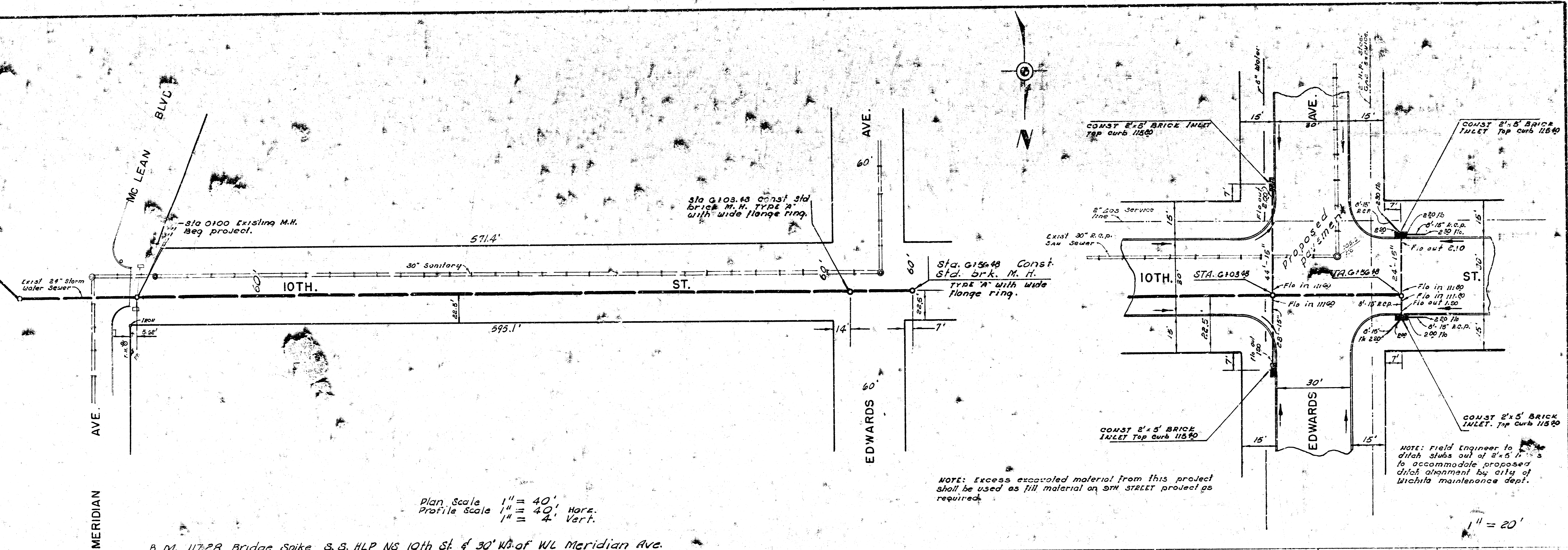
"PROPERTY"		"CITY"	
Exc	FILL	Exc	FILL
388.3	121.7 cys	152.4	11.0 cu yds
107.4 cys	107.4 cys	158.6 cu yds	11.0 cu yds
1107.2 cys	1107.2 cys	1107.2 cys	1107.2 cys
101.7 cys	119.2 cys	167.9 cu yds	12.1 cu yds

"SIDEWALK"  
 Grade parking & clear R of W for proposed sidewalk. Compact fill in walk area. Walk to be constructed by "OTHERS"  
 2 No. 4 bars placed diagonally ground opening.

**9TH STREET**  
 W.L. EDWARDS AVENUE to W.L. MCLEAN BLVD.  
**CITY of WICHITA, KANSAS**  
 (41' Asph Conc - Curb & Gutter)  
 R.W. LINN — CITY ENGINEER  
 Date July 197 Proj No. DAKC 569060

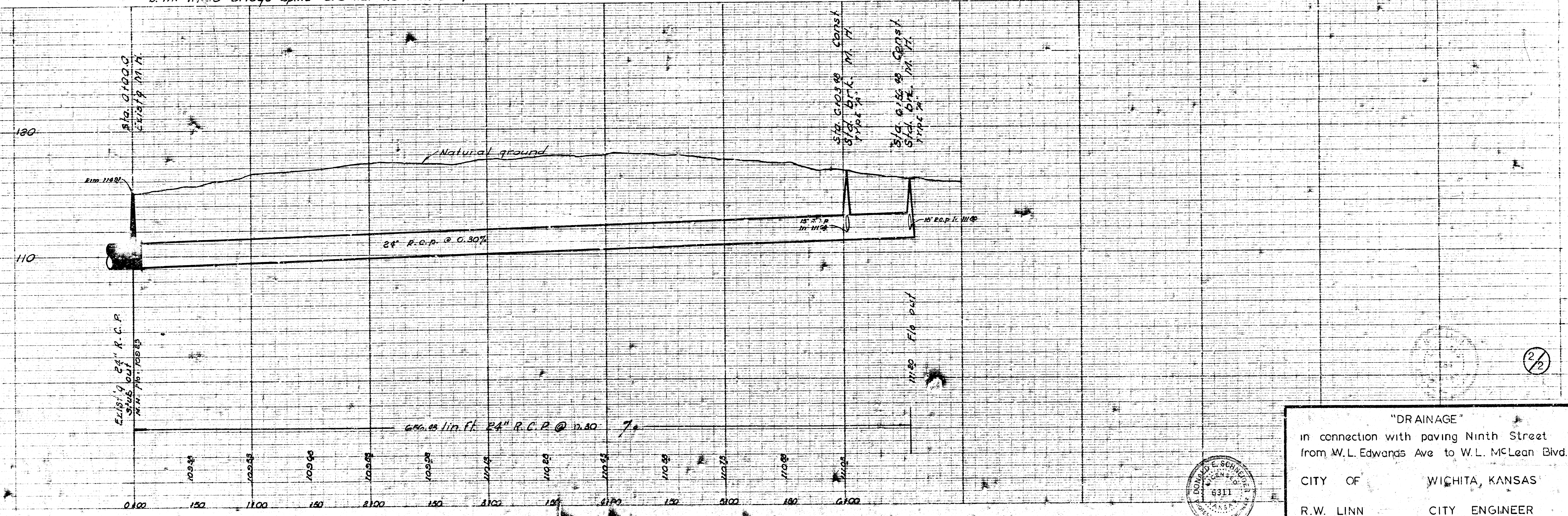
2/3





Plan Scale 1" = 40'  
 Profile Scale 1" = 4' Horiz.  
 1" = 4' Vert.

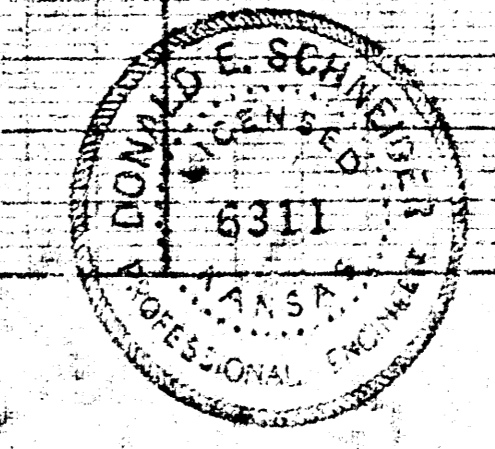
B. M. 117.28 Bridge Spike S.S. HLP NS 10th St. & 30' W. of W.L. Meridian Ave.



NOTE: Excess excavated material from this project shall be used as fill material on 9TH STREET project as required.

NOTE: Field Engineer to ditch stubs out of 2'x5' ditches to accommodate proposed ditch alignment by city of Wichita maintenance dept.

1" = 20'



"DRAINAGE"  
 in connection with paving Ninth Street  
 from W.L. Edwards Ave to W.L. McLean Blvd.  
 CITY OF WICHITA, KANSAS  
 R.W. LINN CITY ENGINEER