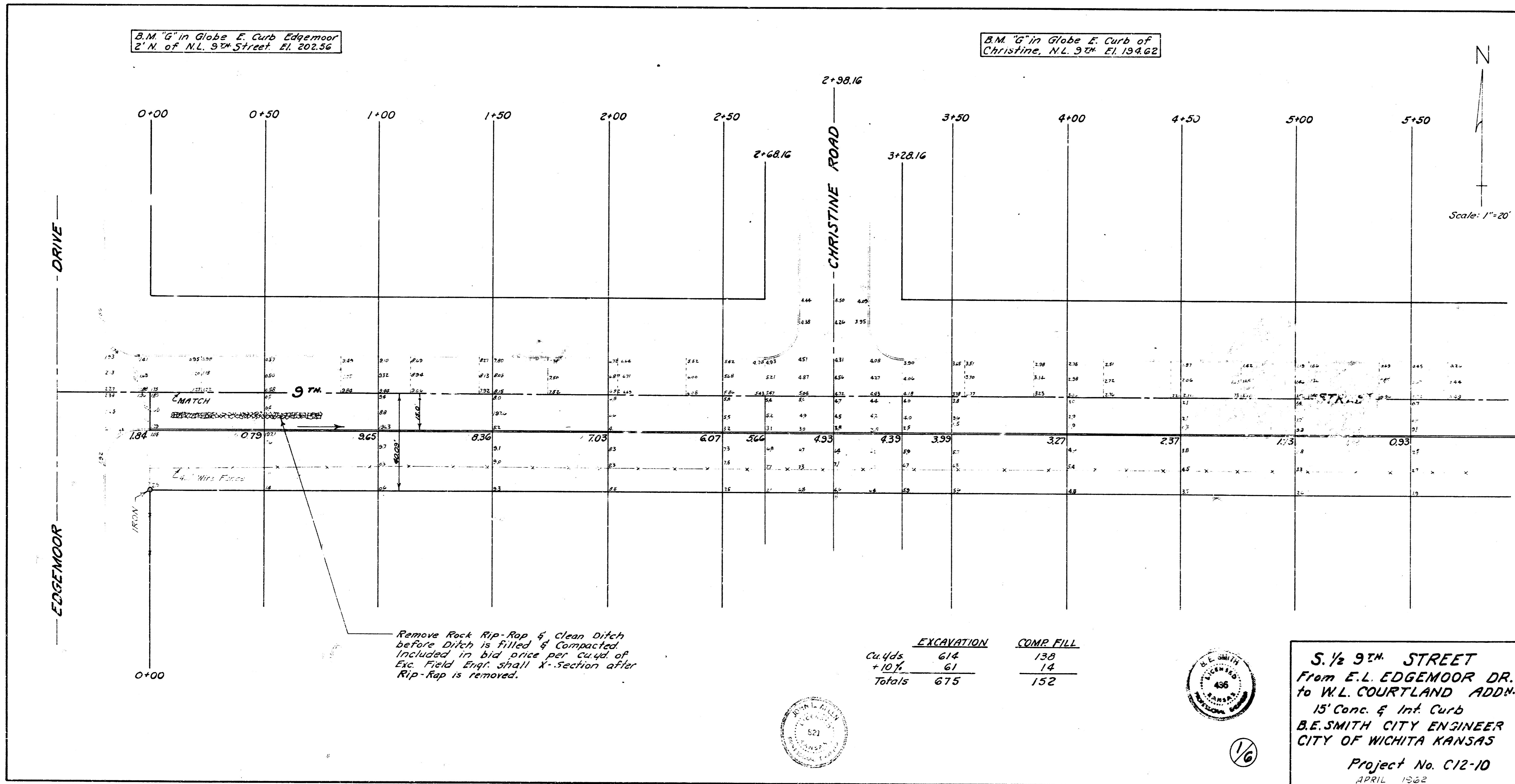


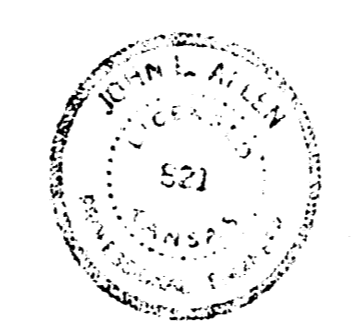
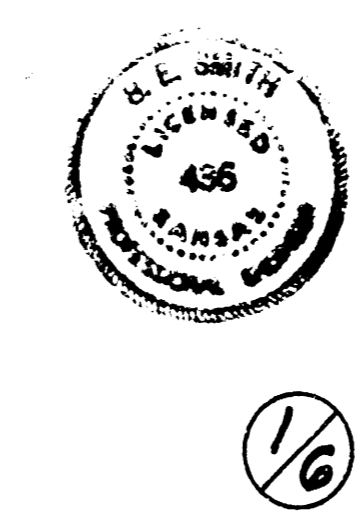
B.M. "G" in Globe E. Curb Edgemoor  
2' N. of N.L. 9th Street El. 202.56

B.M. "G" in Globe E. Curb of  
Christine, N.L. 9th El. 194.62



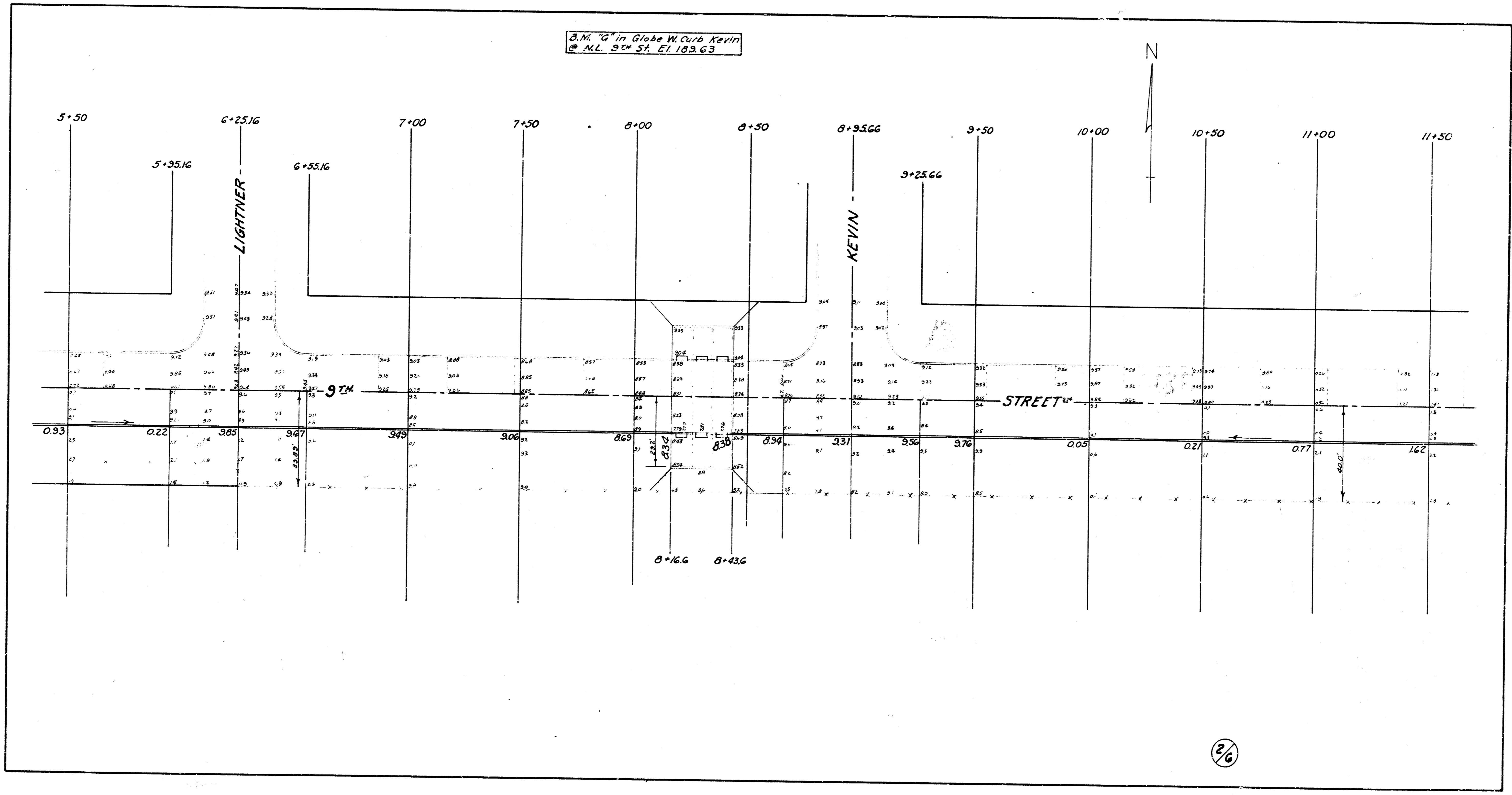
	EXCAVATION	COMP. FILL
Cu yds.	614	138
+ 10%	61	14
Totals	675	152

S. 1/2 9th STREET  
From E.L. EDGE MOOR DR.  
to W.L. COURTLAND ADDN.  
15' Conc. & Int. Curb  
B.E. SMITH CITY ENGINEER  
CITY OF WICHITA KANSAS  
Project No. C12-10  
APRIL 1962

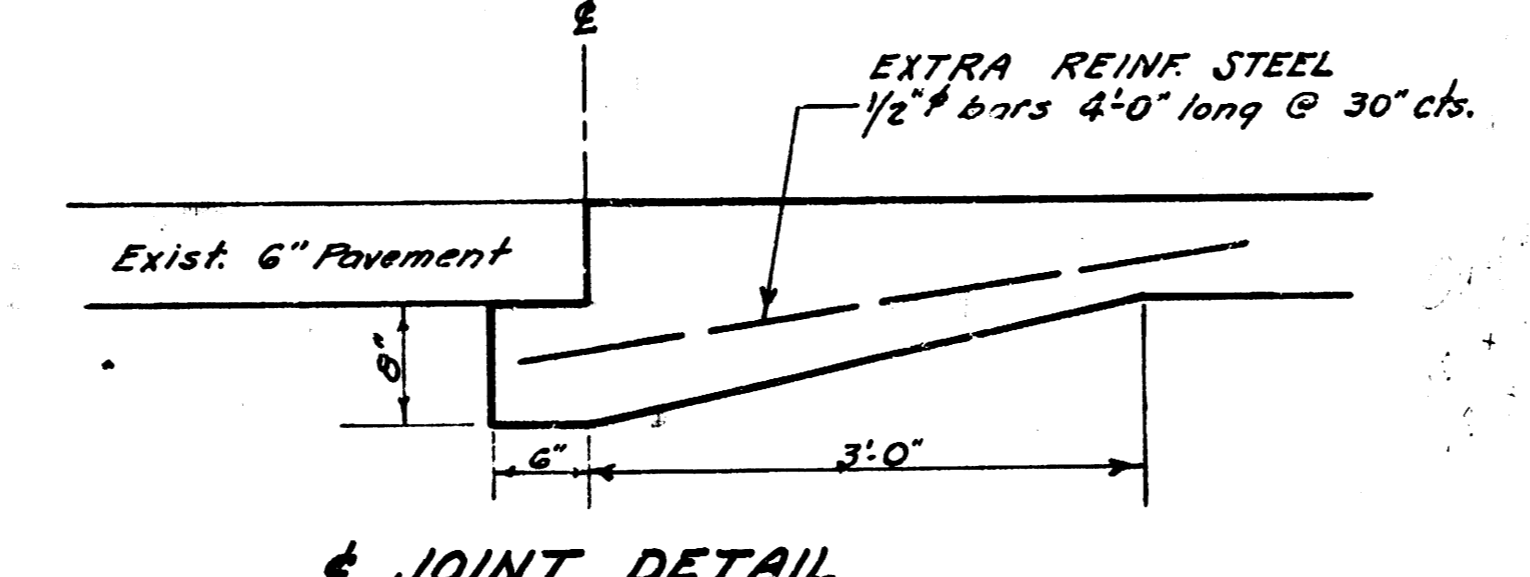
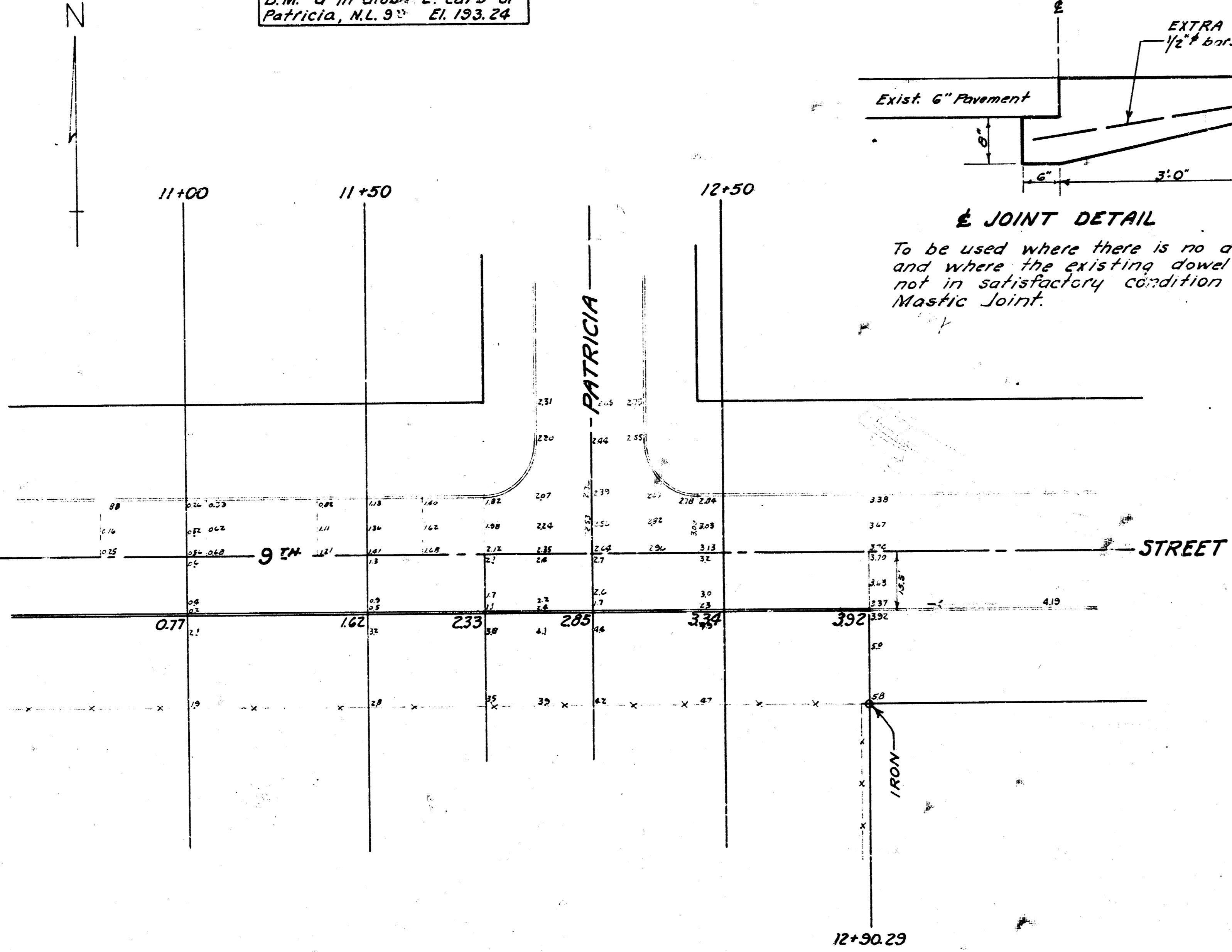


END FILM "G"

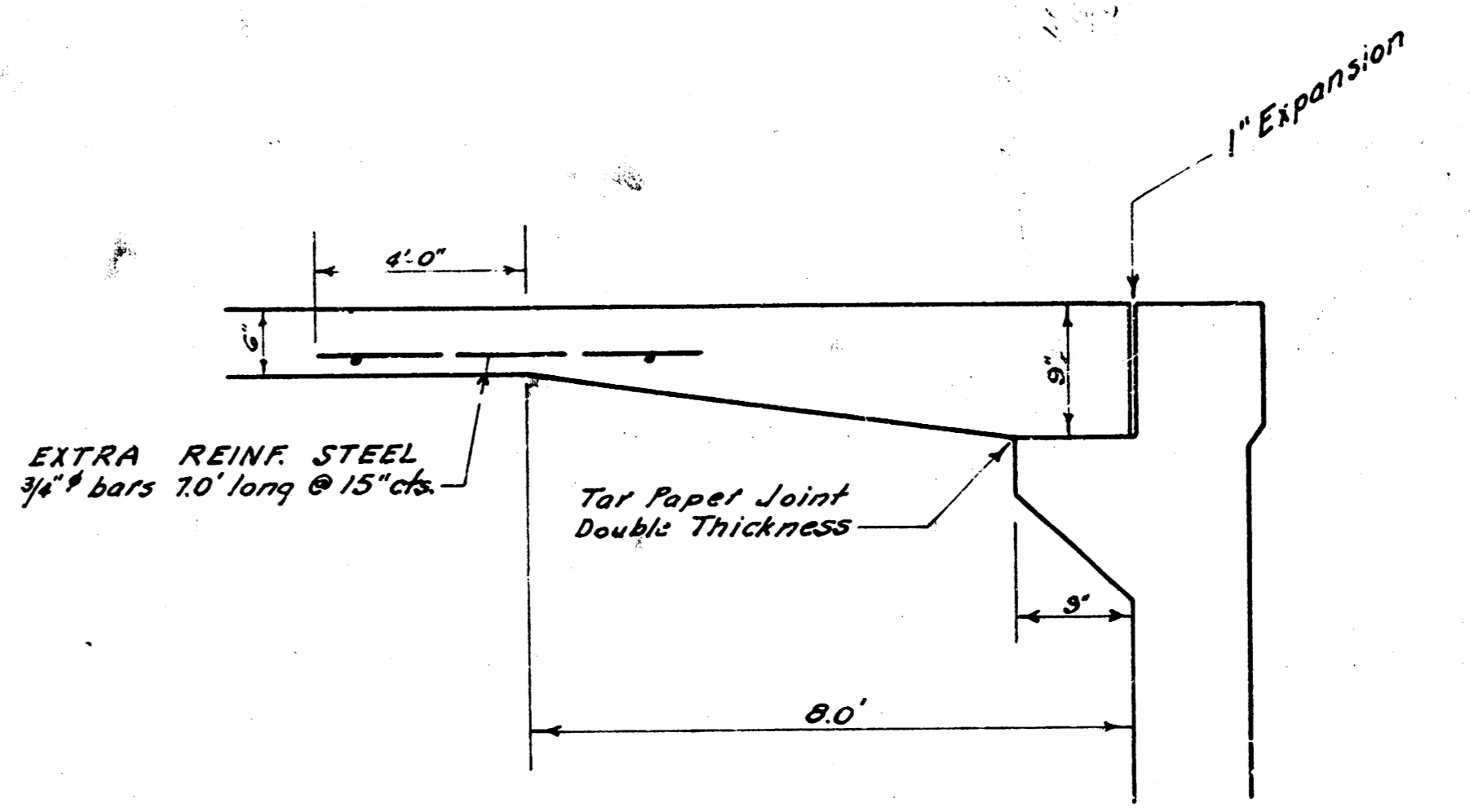
B.M. "G" in Globe W. Curb Kevin  
@ N.L. 9th St. El. 189.63



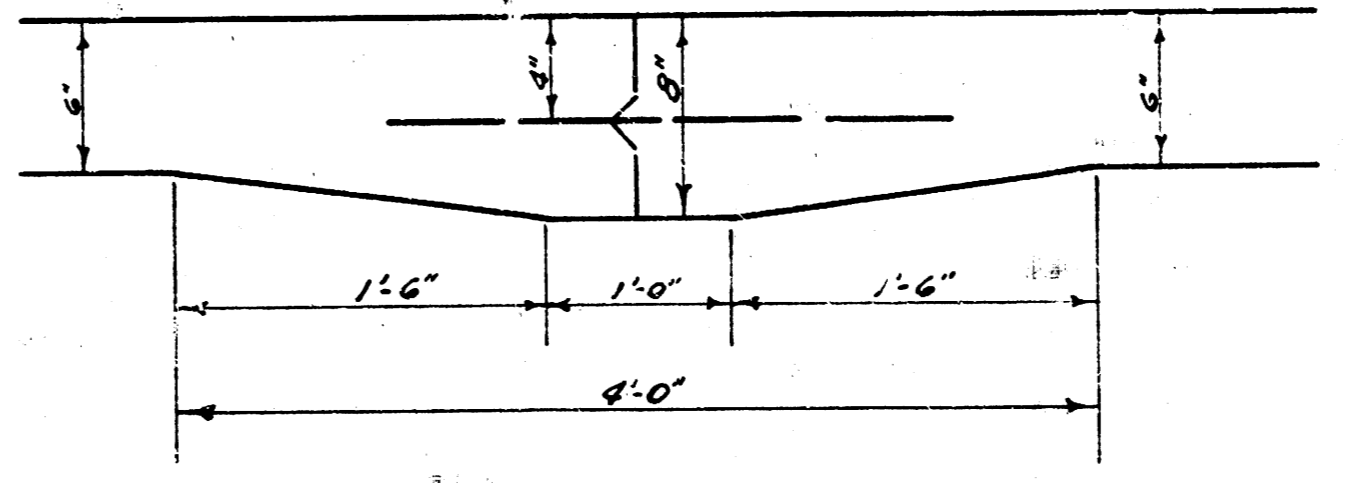
B.M. "G" in Globa E. Curb of Patricia, N.L. 9<sup>th</sup> El. 193.24



**JOINT DETAIL**  
 To be used where there is no dowel steel and where the existing dowel steel is not in satisfactory condition to use in Mastic Joint.



**DETAIL SHOWING INCREASED THICKNESS OF PAVEMENT AT CULVERT STA. 8+16.6 & STA. 8+43.6**  
 No Scale.



**MASTIC JOINT DETAIL**  
 No Scale

NOTE: Where dowel steel was used in M. 1/2 pavement, straighten & clean the steel. If the steel is in satisfactory condition construct joint as shown in Mastic Joint Detail.