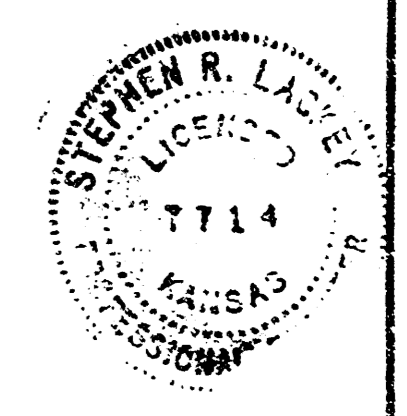
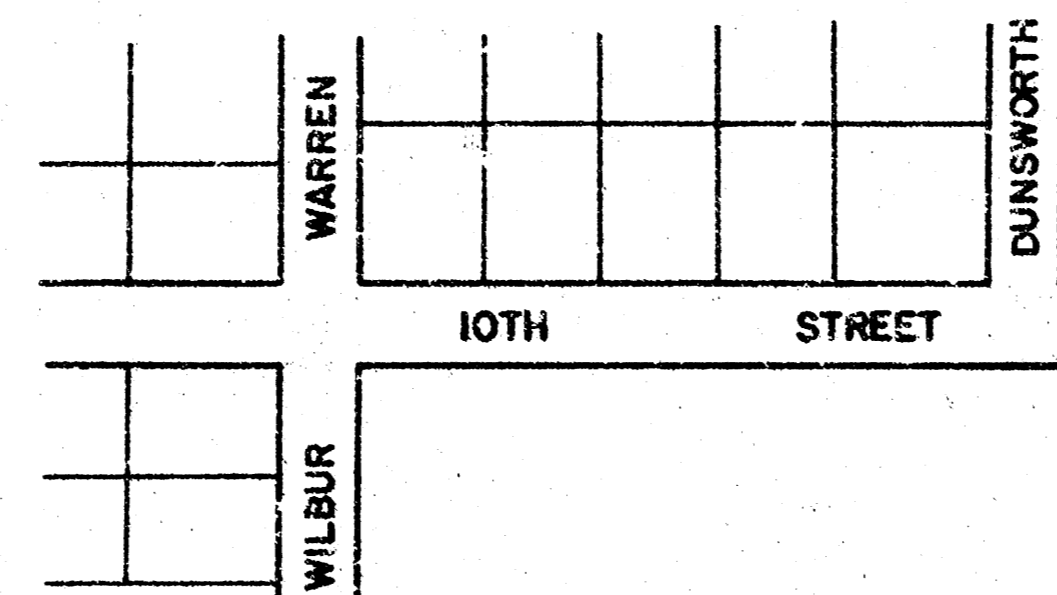
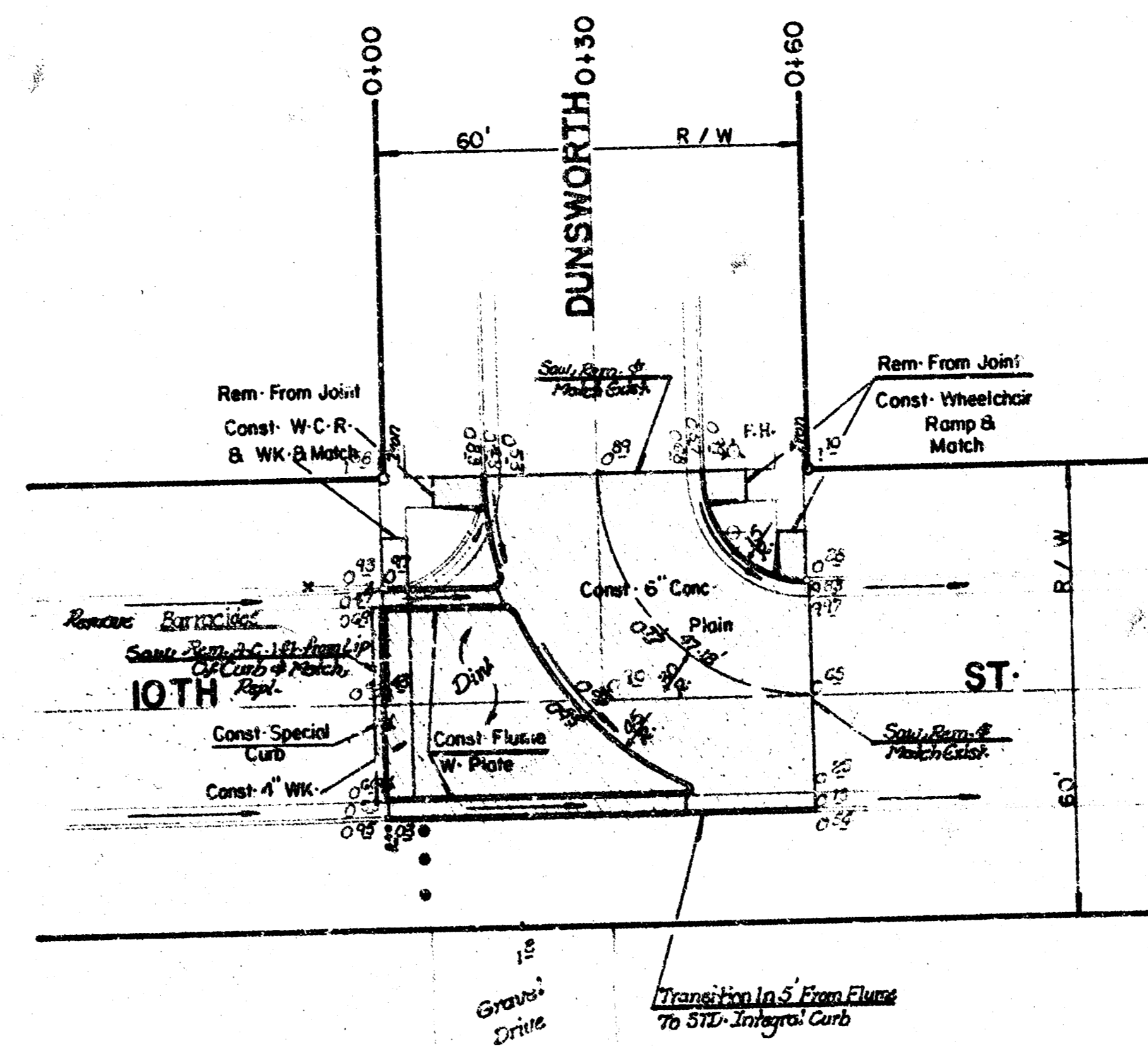
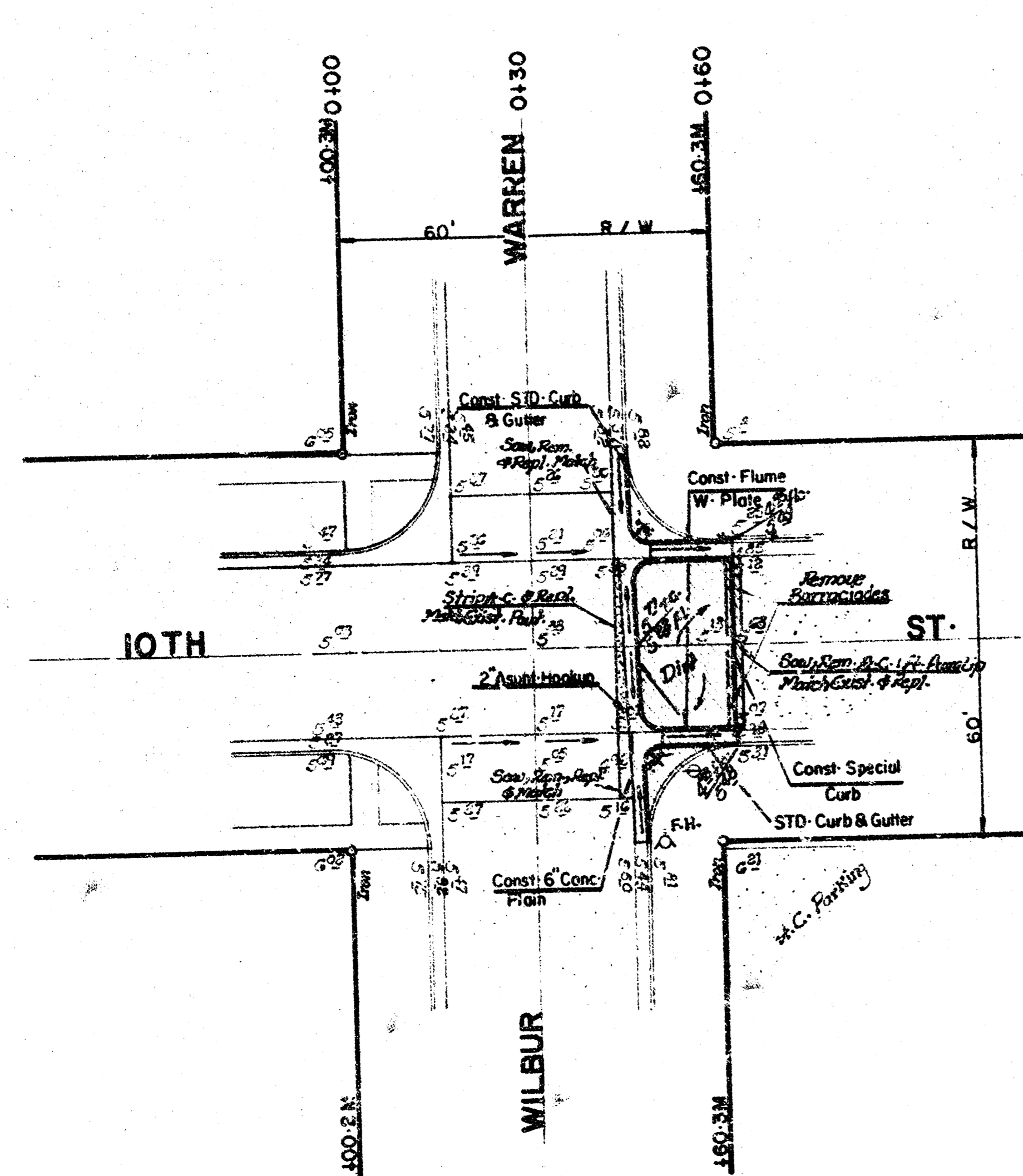
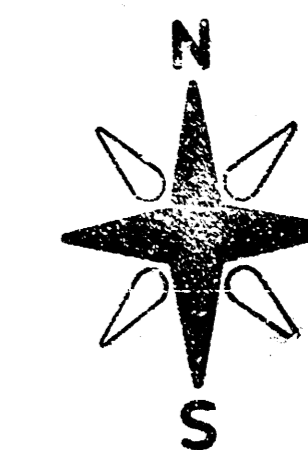


# 10TH STREET

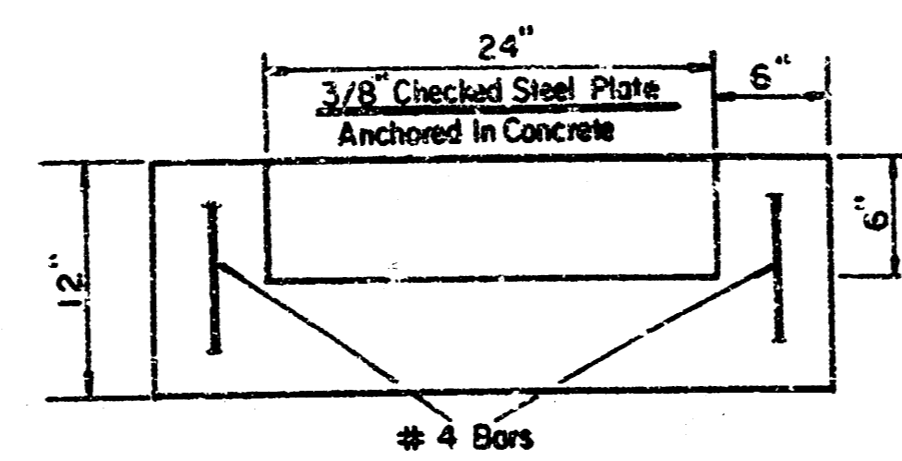


PROJECT DESCRIPTION	
10TH Street	
From W-Curb Of Wilbur Ln-To C-L- Dunsworth	
PROJECT NUMBER	
472-76-245-81149-000-000-001	
BOOK NO. MG-27	APPROVED BY
DRAWN BY A.M.S.	DATE 4-2-82
REVISOR	
CITY OF WICHITA	
DEPARTMENT OF ENGINEERING	
DIRECTOR OF ENG. CITY ENGINEER	
R. W. BRUGGEMAN	
SCALE	
1" = 20'	

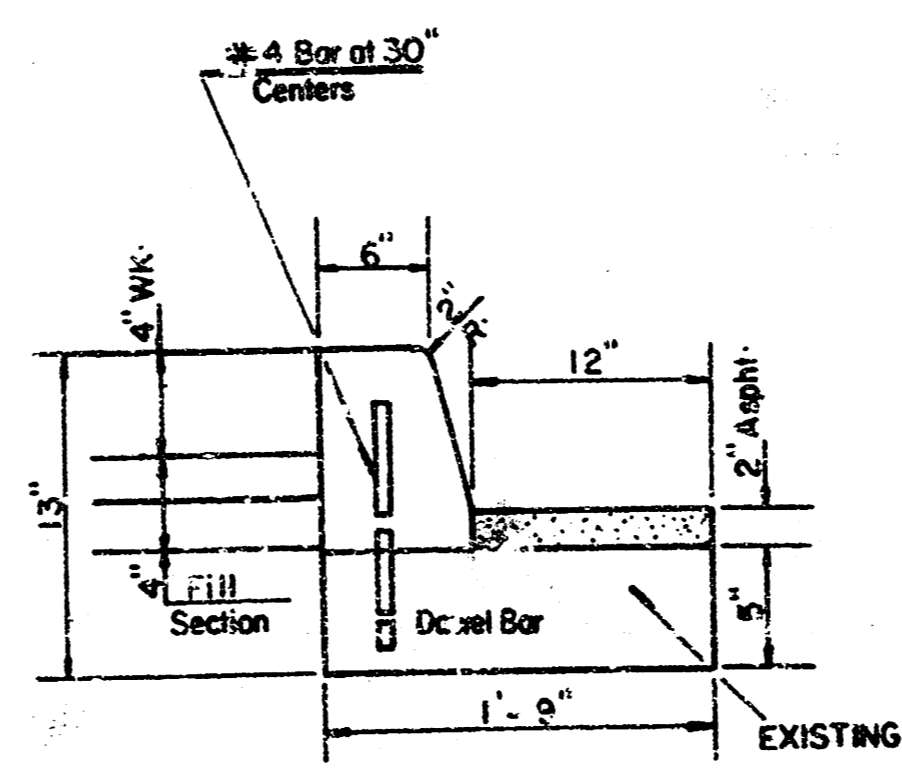
B-M-132-168 Ridge Rd. School City STD-Disc., 49' W. & 34' S. Of C. Both  
B-M-152-83 'B' In Alabama F.H. North E. Cor. IOth & Dunworth



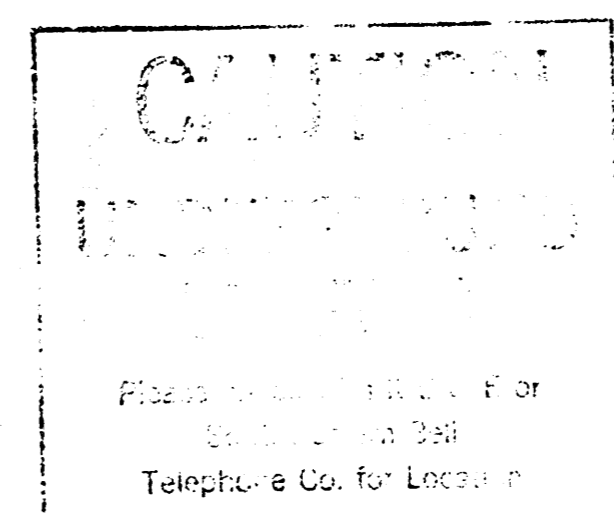
Notes:  
1- Contractor Shall Contact With Traffic Operation & Maintenance Before Construction.  
2- Pavement Removal.



FLUME With PLATE



SPECIAL CURB



THE CONTRACTOR SHALL BE RESPONSIBLE FOR PRESERVING PROPERTY IRONS. THE CONTRACTOR SHALL BE REQUIRED TO RE-ESTABLISH ANY PROPERTY IRONS WHICH ARE DAMAGED OR DESTROYED BY HIS CONSTRUCTION OPERATIONS. THIS SHALL BE RE-ESTABLISHED BY A LICENSED LAND SURVEYOR OR A LICENSED PROFESSIONAL ENGINEER IN ACCORDANCE WITH STATE LAWS.

PROJECT DESCRIPTION  
**10TH Street**  
From W. Curb Line Of Wilbur Ln. To C.L. Dunworth  
PROJECT NUMBER  
472-76-245-81149-000-000-001

14 3 3 8

FILMED FROM THE BEST AVAILABLE COPY ....