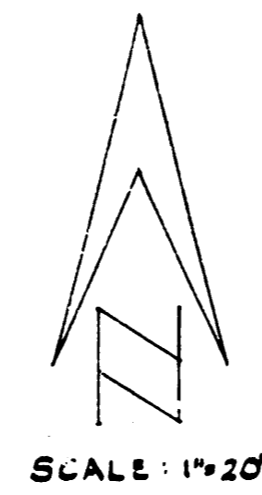
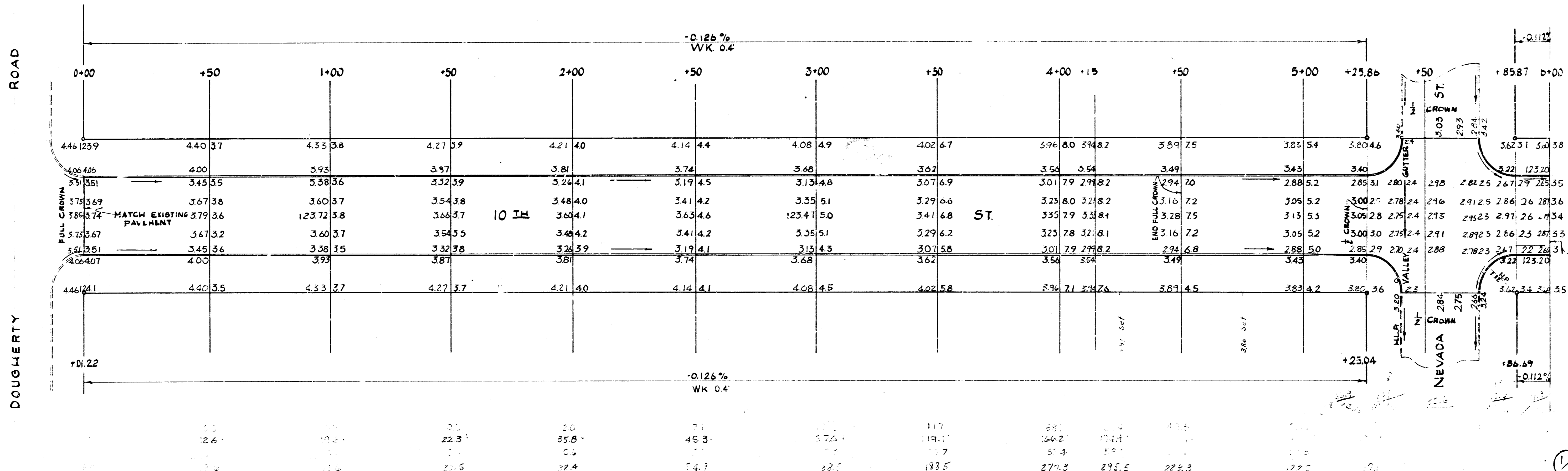


B.M. 125.24 RR Spike HLP - W. Pole H. Frame
 Transformer Poles 130' N. of 10th - 30' E. of Dougherty
 B.M. 124.68 Step Bench E.S. H.L.P. S.W. 10th & Nevada



EARTHWORK QUANTITIES

PROP.		CITY	
EXCAV.	COMP. FILL	EXCAV.	COMP. FILL
115.0	115.0	115.0	115.0



BL 7227
 7-30-59
 3-1-59



10TH ST.
 EL. DOUGHERTY TO W.L. WEST
 30' CONC. & CO.
 CITY OF WICHITA, KANSAS
 D.E. SMITH CITY ENGINEER
 PROJ. NO. C-19-30
 AUG. 1959



SCALE 1"=20'

-0.112%
Wk 0.4'

6+00	+50	7+00	+50	8+00	+50	9+00	+50	10+00	+50	11+00	+50	12+00
340.38	355.34	349.29	344.28	358.29	352.29	327.31	321.33	316.33	310.22	304.20	299.18	293.16
125.20	8.15	3.09	3.04	2.98	2.92	2.87	2.81	2.76	2.70	2.64	2.59	122.53
265.35	260.32	254.28	249.28	243.28	237.28	232.31	226.33	221.33	215.22	209.14	204.16	198.14
287.36	282.32	276.28	271.30	265.29	259.30	254.31	248.34	243.33	237.22	231.18	226.15	220.15
297.34	292.33	288.29	283.31	277.28	271.31	266.32	260.32	255.34	249.24	243.20	238.14	232.12.5
287.33	282.32	276.28	271.31	265.30	259.30	254.33	248.35	243.37	237.27	231.20	226.15	220.13
265.31	260.31	254.31	249.31	243.29	237.30	232.31	226.32	221.33	215.25	209.22	204.18	198.17
123.20	3.15	3.09	3.06	2.98	2.92	2.87	2.81	2.76	2.70	2.64	2.59	122.53
340.35	355.32	349.31	344.31	358.30	352.29	327.31	321.34	316.35	310.27	304.22	299.16	293.15

-0.112%
Nk 0.4'

2.2	1.4	1.3	1.0	0.9	0.8	0.7	0.6	0.5	0.4	0.3	0.2	0.1
11.2	12.7	14.2	15.7	17.2	18.7	20.2	21.7	23.2	24.7	26.2	27.7	29.2
33.0	34.0	35.0	36.0	37.0	38.0	39.0	40.0	41.0	42.0	43.0	44.0	45.0
46.9	48.0	49.0	50.0	51.0	52.0	53.0	54.0	55.0	56.0	57.0	58.0	59.0
65.6	66.7	67.8	68.9	70.0	71.1	72.2	73.3	74.4	75.5	76.6	77.7	78.8
85.9	87.0	88.1	89.2	90.3	91.4	92.5	93.6	94.7	95.8	96.9	98.0	99.1
108.7	109.8	110.9	112.0	113.1	114.2	115.3	116.4	117.5	118.6	119.7	120.8	121.9
77.0	78.1	79.2	80.3	81.4	82.5	83.6	84.7	85.8	86.9	88.0	89.1	90.2
0.7	1.4	2.1	2.8	3.5	4.2	4.9	5.6	6.3	7.0	7.7	8.4	9.1
13.7	14.4	15.1	15.8	16.5	17.2	17.9	18.6	19.3	20.0	20.7	21.4	22.1

