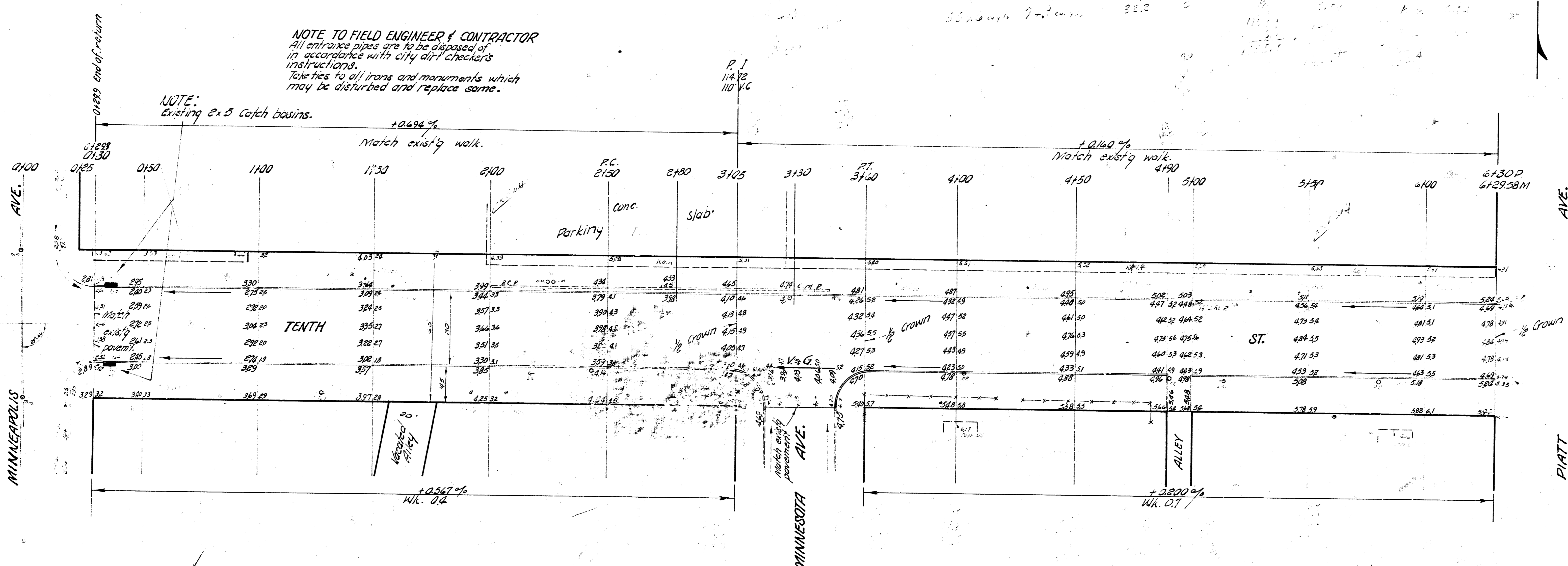


B. M. 117.38 "T" in Trench Hydrant N.W. cor. Minneapolis & 9th.
 Stations on E. 10th St.
 B. M. 115.69 6" Spike N. Side Power Pole @ N.W. cor. 9th & Minnesota.

NOTE TO FIELD ENGINEER & CONTRACTOR
 All entrance pipes are to be disposed of
 in accordance with city ditch checker's
 instructions.
 Ties to all irons and manuments which
 may be disturbed and replace same.

NOTE:
 Existing 2x5 catch basins.

First	Total	Total
117.38	115.69	233.07
115.69	117.38	233.07
117.38	115.69	233.07



Scale 1" = 40'
 P. E. C. M.
 Checked

TENTH ST.
 EL. MINNEAPOLIS - WL. GROVE
 30" Conc. & Ch.
 CITY OF WICHITA, KANSAS
 B. E. SMITH - CITY ENGINEER
 AUG. 1956, PROJ. NO. C16-99



①
③

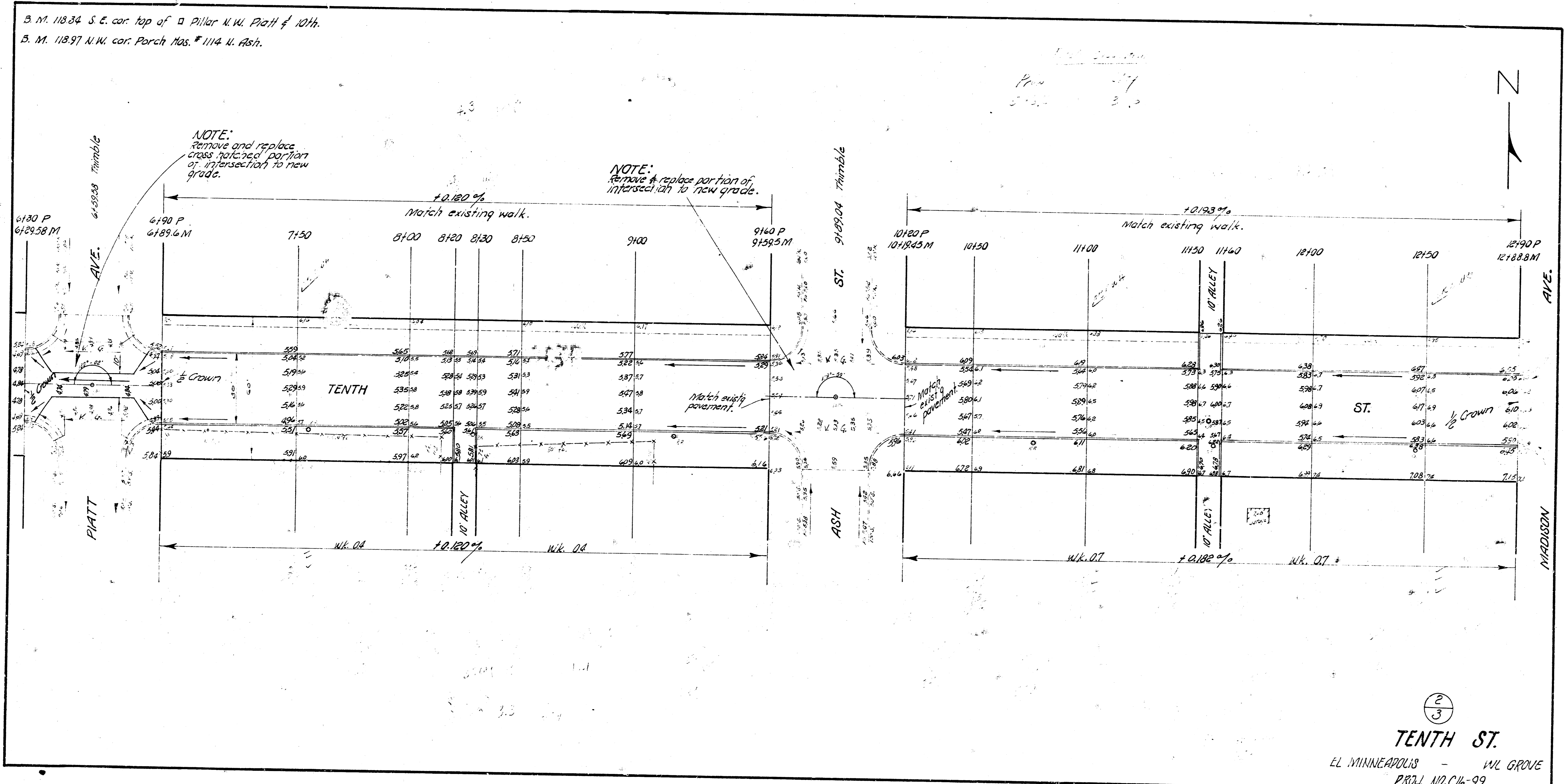
B. M. 11834 S. E. cor. top of a Pillar N.W. Platt & 10th.
 B. M. 11897 N.W. cor. Porch Mas. # 1114 N. Ash.

Prop. 117
 5-25-99 3.0



NOTE:
 Remove and replace
 cross matched portion
 of intersection to new
 grade.

NOTE:
 Remove & replace portion of
 intersection to new grade.



2
 3
TENTH ST.

EL. MINNEAPOLIS - WIL GROVE
 PROJ. NO. C16-99