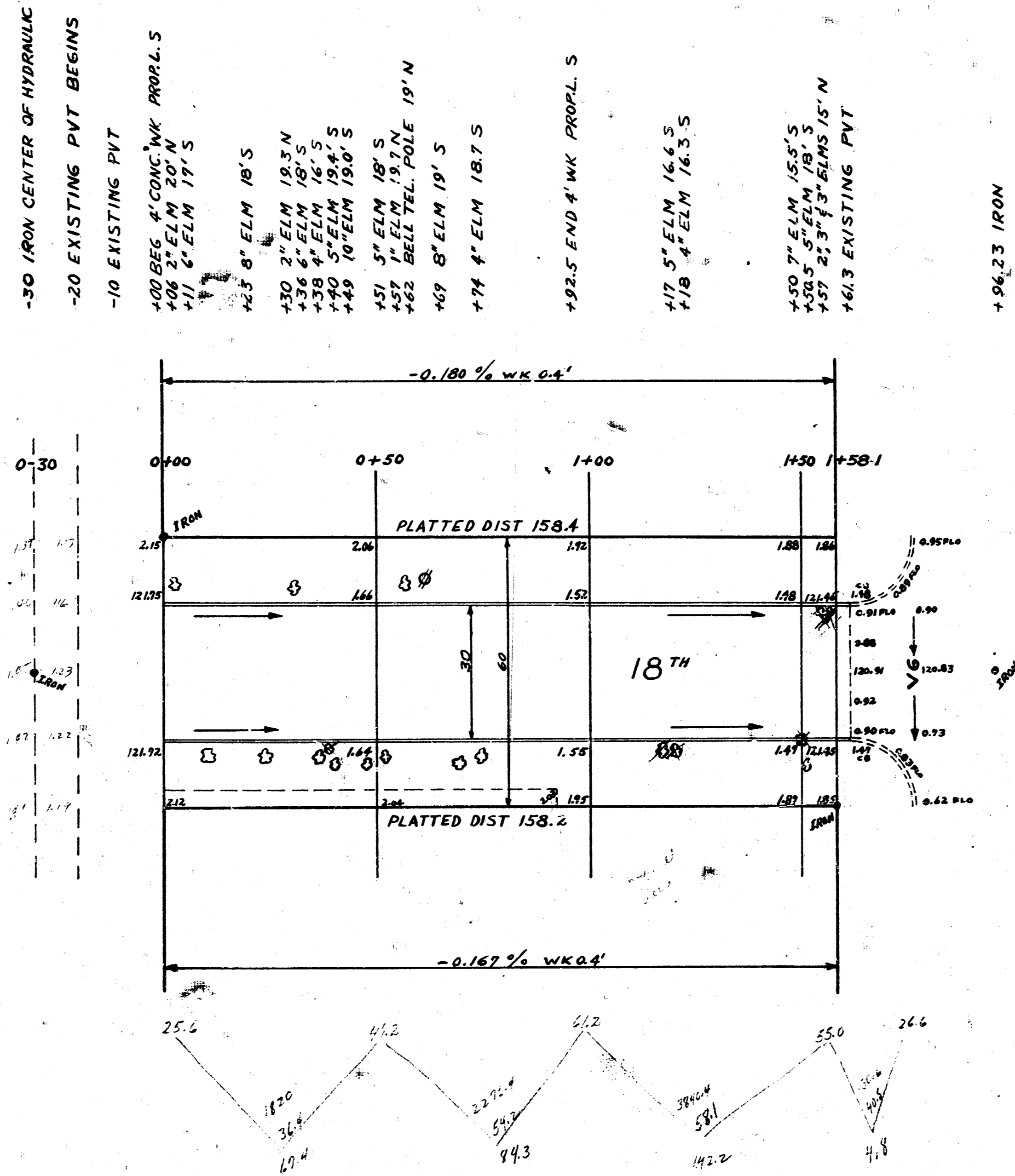


B.M. 125.17 NE CORNER BK. PORCH HOUSE AT
NE CORNER OF HYDRAULIC & 18TH
STATIONING ON $\frac{1}{2}$

SURVEY CLARK & B. 7763
Plan & Elevation
Exc. & Prop.
Copyright 1954

HYDRAULIC AVE.

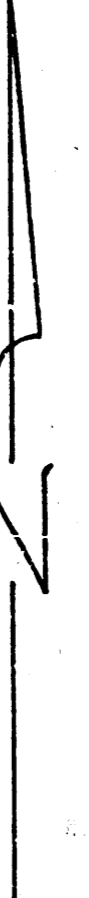


-30 IRON CENTER OF HYDRAULIC
-20 EXISTING PVT BEGINS
-10 EXISTING PVT
+00 BEG 4" CONC. WK. PROPL. S
+06 2" ELM 20' N
+11 6" ELM 19' S
+25 8" ELM 18' S
+30 2" ELM 19.3' N
+36 4" ELM 18' S
+40 5" ELM 19.4' S
+49 10" ELM 19.0' S
+51 5" ELM 18' S
+57 1" ELM 19.7' N
+62 BELLE TELL POLE 19' N
+69 8" ELM 19' S
+74 4" ELM 18.7' S
+82.5 END 4" WK. PROPL. S

+17 5" ELM 16.4' S
+18 4" ELM 16.3' S

+30 7" ELM 15.8' S
+37 2 1/2" 4" ELM 15' N
+41.3 EXISTING PVT

+94.23 IRON



PROPERTY	
CUT	298.4
FILL	12.6
TOTAL	311.0
328.6	30.00

1/2



18TH ST
E.L. HYDRAULIC TO W.L. KANSAS
30' CONC & CB
CITY OF WICHITA
B.E. SMITH CITY ENGINEER
FEB. 1954 PROJ. NO. C13-239