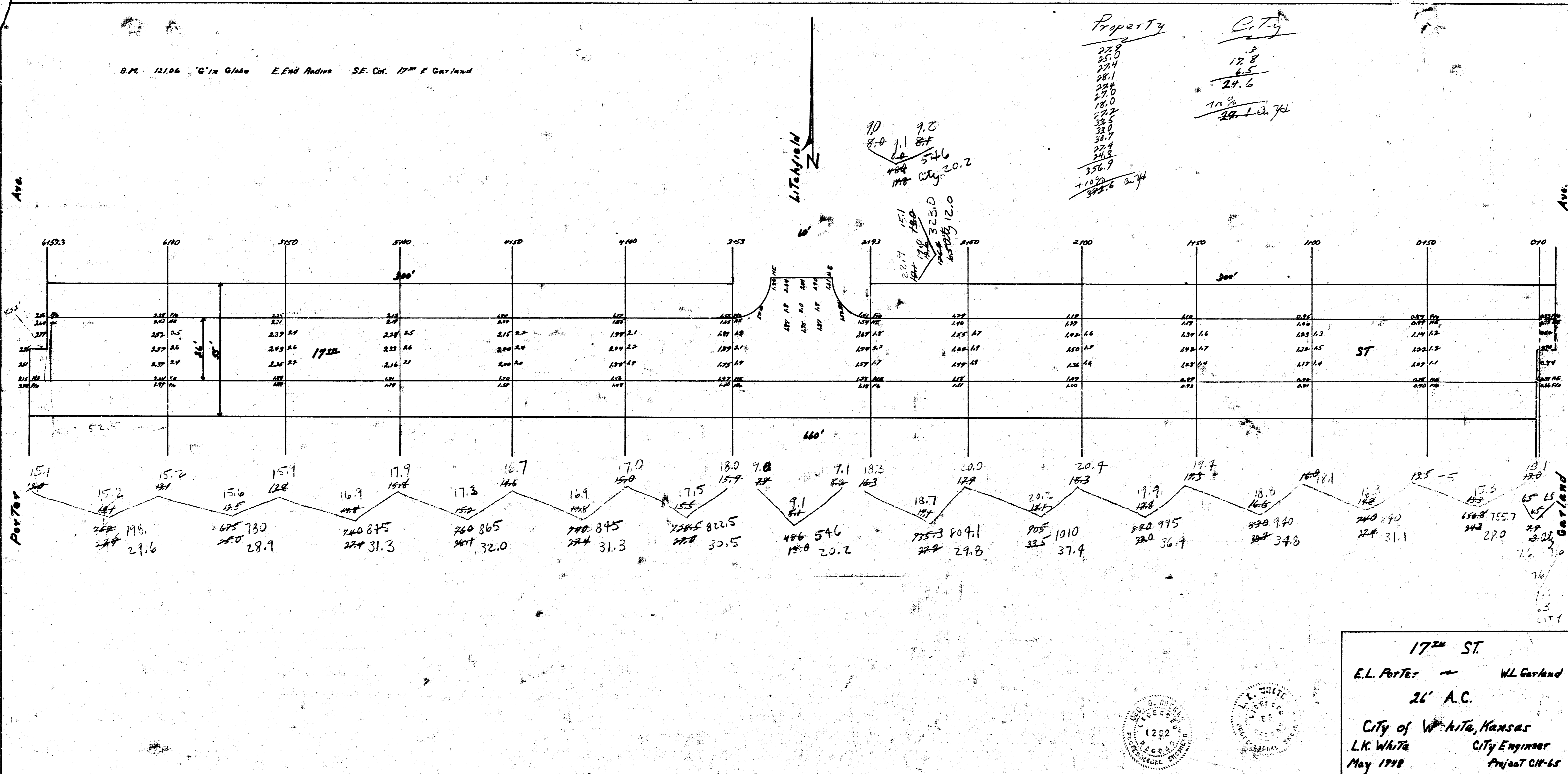


B.M. 12106 6" in Circle E. End Radius S.E. Cor. 17th of Garland

Property	City
252.8	3
252.0	12.8
274	6.5
281	24.6
287.6	
27.0	10.2
222	
32.0	
30.7	
27.9	
24.3	
356.7	
710.2	
992.6	

70
8.0
7.0
8.5
546
174 City 20.2



17th ST.
E.L. Porter — W.L. Garland
26' A.C.
City of White, Kansas
L.K. White City Engineer
May 1918 Project CIP-65