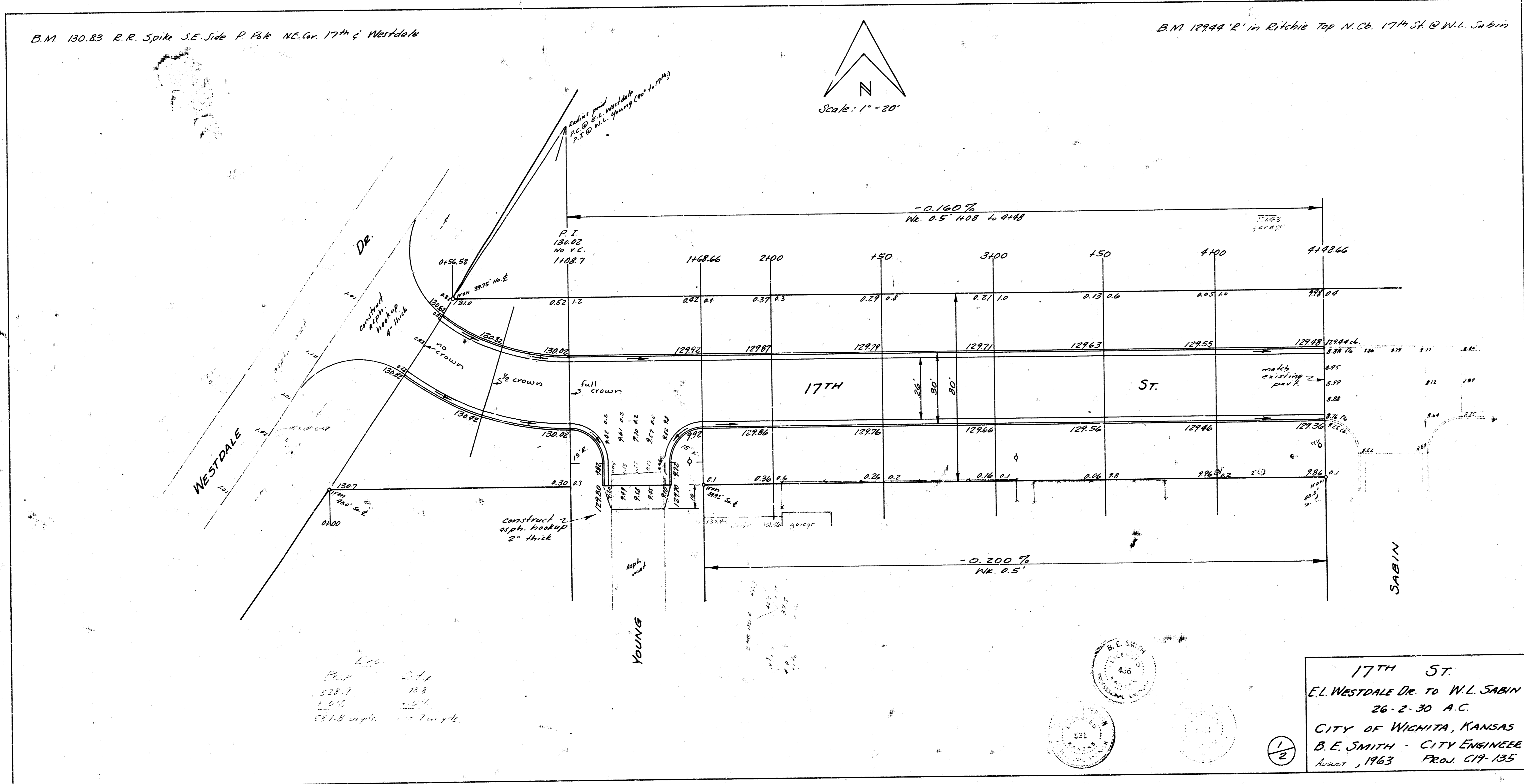
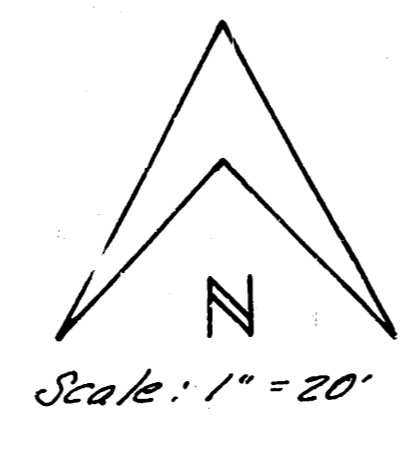
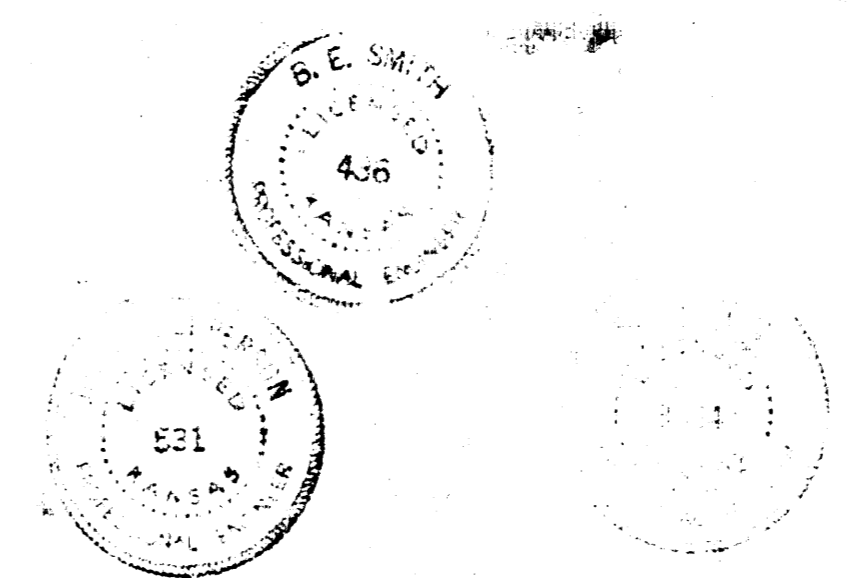


B.M. 130.83 P.R. Spike SE Side P. Pk NE. Cor. 17th & Westdale

B.M. 12944 'R' in Ritchie Top N. Co. 17th St @ W.L. Sabin



Etc
P.L. 15.8
L.S. 1.37
S.L. 1.74



17th St.
E.L. Westdale Dr. to W.L. Sabin
26 - 2 - 30 A.C.
CITY OF WICHITA, KANSAS
B.E. SMITH - CITY ENGINEER
AUGUST, 1963 PROJ. CIT-135

1/2