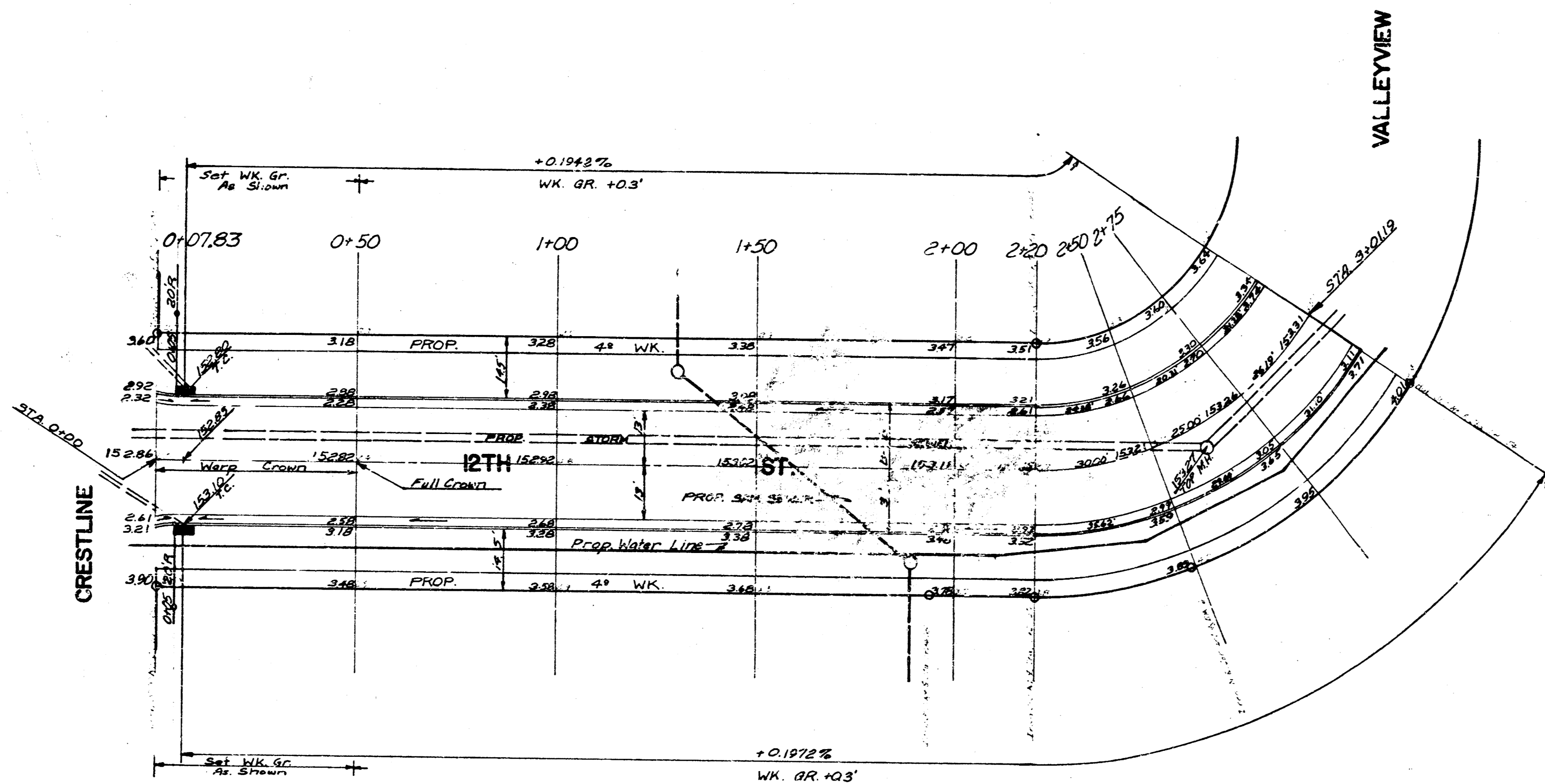


Surveyed by
Plan
Checked by
Date

B.M. 155.43 "X" TOP WEST CB. CHIPPER LANE @ S.L. 12TH ST.



NOTE: CONTRACTOR TO CLEAR RIGHT-OF-WAY, GRADE PARKING, AND COMPACT FILL IN SIDEWALK AREAS. SIDEWALK TO BE CONSTRUCTED BY OTHERS.
NOTE: FIELD ENGINEER TO DETERMINE WHICH PORTIONS ARE TO HAVE TREATED SUB-GRADE AND WHICH PORTIONS ARE TO BE SUB-GRADE MODIFIED.
NOTE: MANHOLE, INLETS & STORM SEWER TO BE CONSTRUCTED BY OTHERS.
O MANHOLE INLET STORM SEWER SANITARY SEWER
NOTE: BASELINE = @ 12TH ST.

CAUTION: CONTRACTOR TO USE EXTREME CARE WHEN EXCAVATING PROJECT. STORM SEWER APPROX. 1' BELOW BOTTOM OF SUB-GRADE.

Δ = 50°48' R. = 800' T. = 448' L. = 819' L.C. = 7275'

CURVE DATA BASED ON 800' RAD. *external*

STA	CH	PT	RT	CH	PT	RT
2+20				0°00'00"	0°00'00"	
2+50	300'	21.25'	38.40'	10°44'36"	10°44'36"	
2+75	250'	17.74'	32.06'	6°51'10"	6°51'10"	
3+01.19	26.19'	18.28'	33.37'	9°22'45"	9°22'45"	

NOTE: CONSTRUCTION OF ALL PROPOSED SEWERS TO BE COMPLETED BEFORE STARTING CONSTRUCTION ON THIS PROJECT.
NOTE: ALL EXCESS EXCAVATED MATERIAL FROM THIS PROJECT IS TO BE STOCKPILED AT LOCATIONS DETERMINED BY THE ENGINEER IN WESTLINK VILLAGE TENTH ADDN.

EARTHWORK
EXCAVATION + 282.7 CU. YDS. COMP. FILL + 37.7 CU. YDS.
+10% 28.2 CU. YDS. +10% 3.8 CU. YDS.
TOTAL 317.6 CU. YDS. TOTAL 41.5 CU. YDS.

12TH ST.
E. L. CRESTLINE TO N. L. LOT 3,
BLK. 6, WESTLINK VILLAGE 10TH
ADDN.
ASPHALTIC CONCRETE PAVEMENT
3" B-B WITH COMB. CB. & GTR.
CITY OF WICHITA, KANSAS
R. W. LINN CITY ENGINEER
PROJ. NO. DAKS 572040
DATE: MAY 1973

