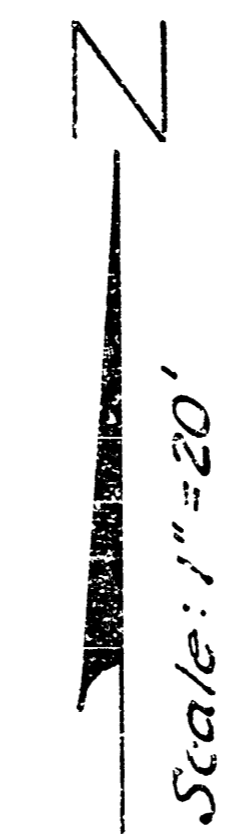
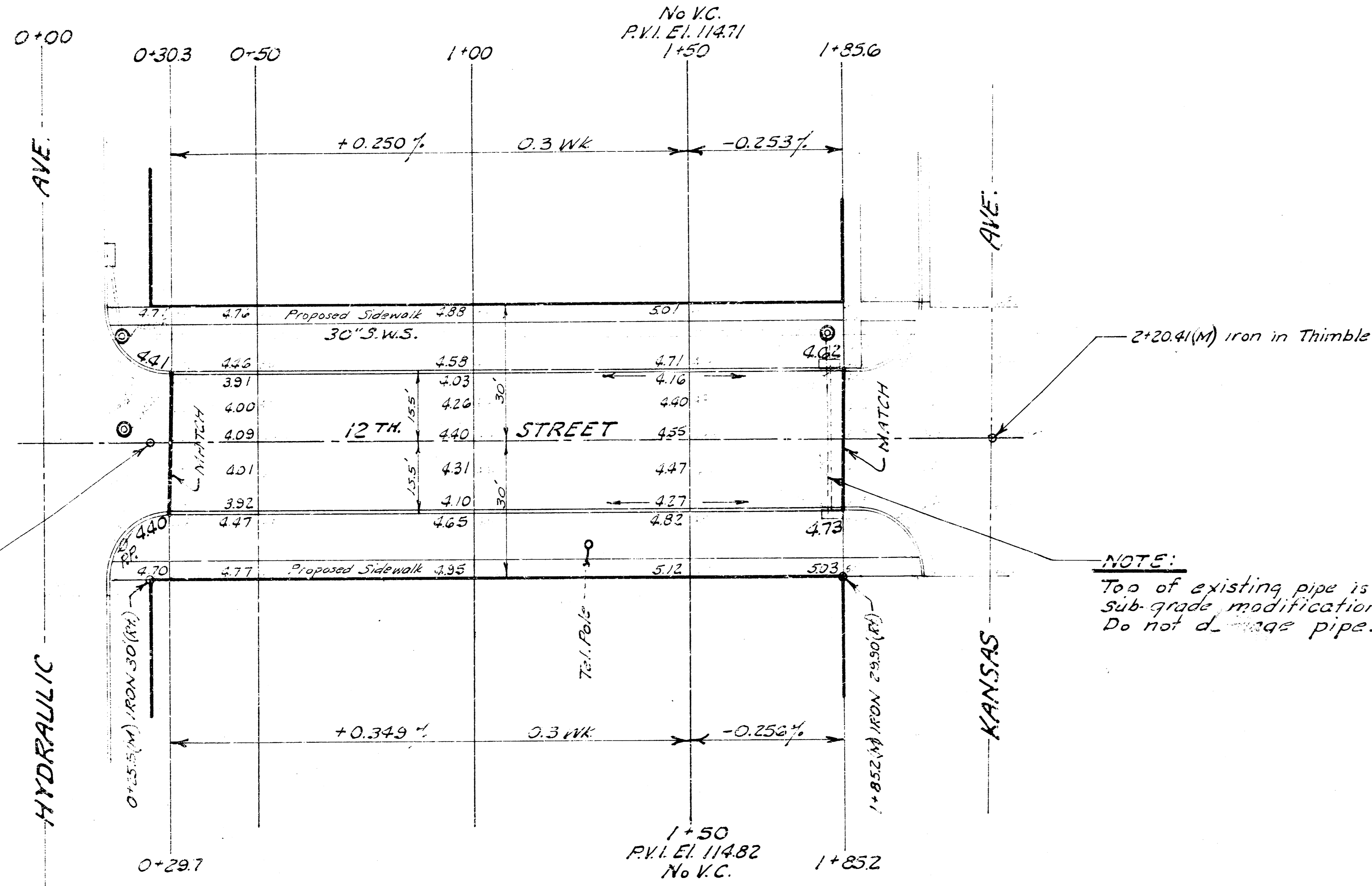


B.M. 115.64 "G" in Globe cfr walk west
S.W. corner Hydraulic & 13th. Street.

NOTE:
Contractor to grade parkings and
compact fill for proposed sidewalk.
Sidewalk to be constructed by others.

B.M. 114.61 R.R. Spike N. side P.Pole
S.E. corner 12th. & Hydraulic



General Notes:

1. Excess excavated material to be used on Murdock St. Proj. C10-24.
2. This project is to be coordinated with projects C10-11, C10-12, C10-9 and C10-24.
3. Excavation from sidewalk project can be used for parking fill on all street projects.

NOTE:
Top of existing pipe is in the
sub-grade modification area.
Do not damage pipe.

EXCAVATION		COMP. FILL	
	92 Cu.Yds.		3 Cu.Yds.
+ 10 ft.	9 "		
Totals	101 Cu.Yds.		
		3 Cu.Yds.	
		95 "	Sub-grade Modification
		98 Cu.Yds.	

12th. STREET
E.L. HYDRAULIC AVE.
to W.L. KANSAS AVE.
30' Conc. & Curb
B.E. SMITH CITY ENGINEER
CITY OF WICHITA KANSAS
Date: _____
Project No. C10-10

