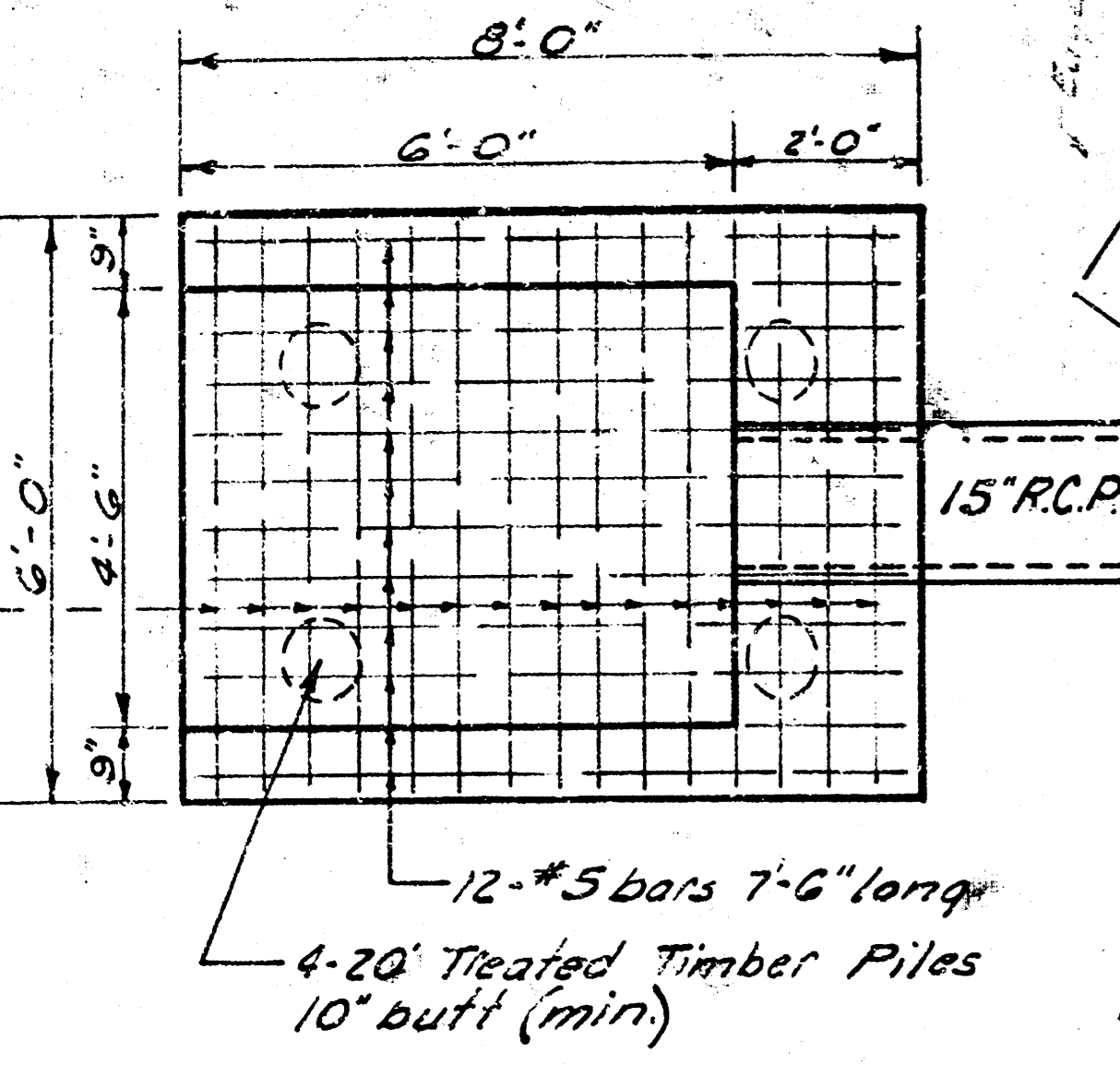


NOTE TO CONTRACTOR

1. Mechanically compact backfill between Outfall Structure and Sta. 0+45 & ground inlets. Compacting backfill is incidental to Outfall & Inlet Construction.
2. Flush earth backfill from Sta. 0+45 to Sta. 1+05
3. Sand backfill (Vibrate & Flush) all lines from Sta. 1+05 to end of project.
4. Cost of Vibrating & Flushing to be included in bid price of Pipe.
5. Place broken Conc. Rip-Rap from Outfall Structure to edge of water. Cost to be considered incidental to Outfall Structure.

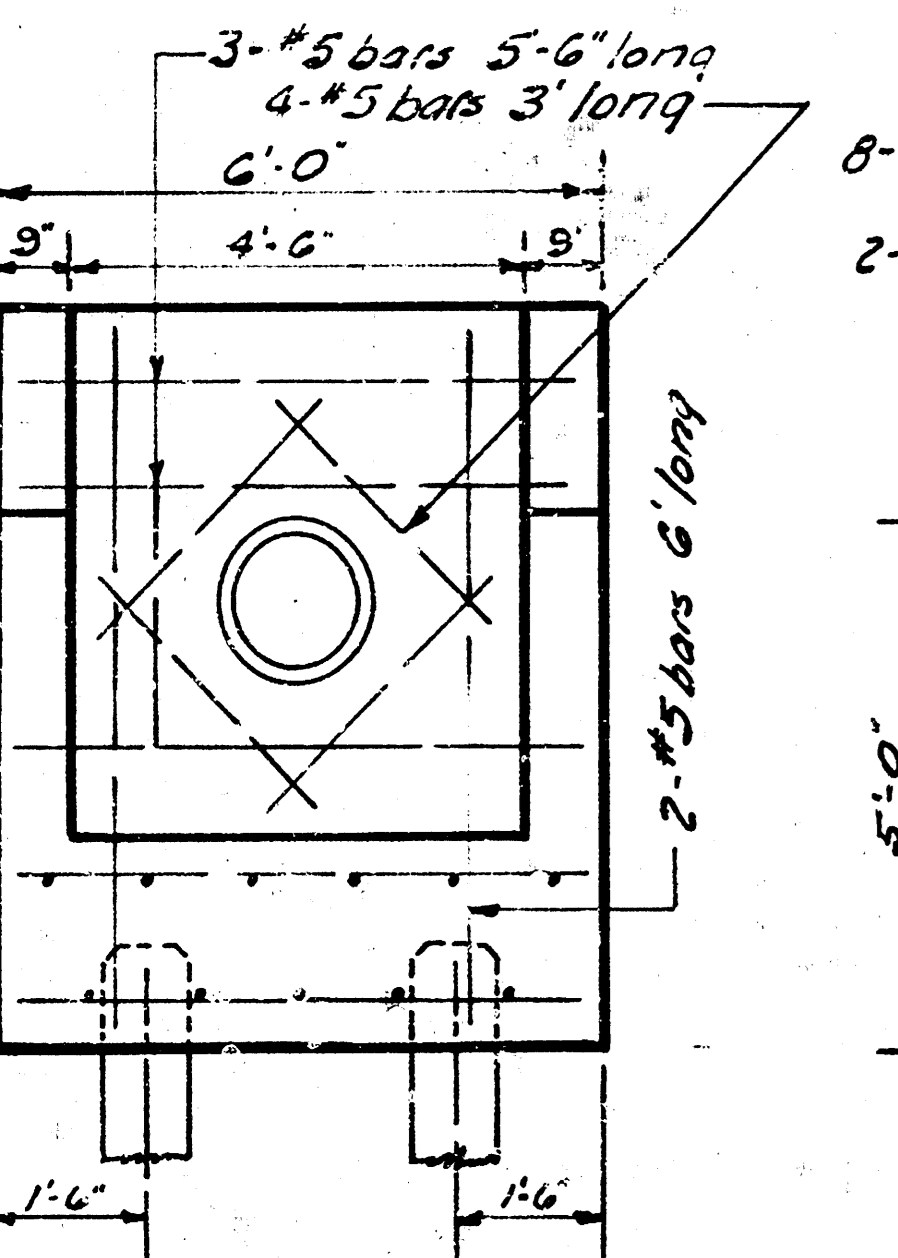
REINF. CONC. OUTFALL STRUCTURE STA. 0+30



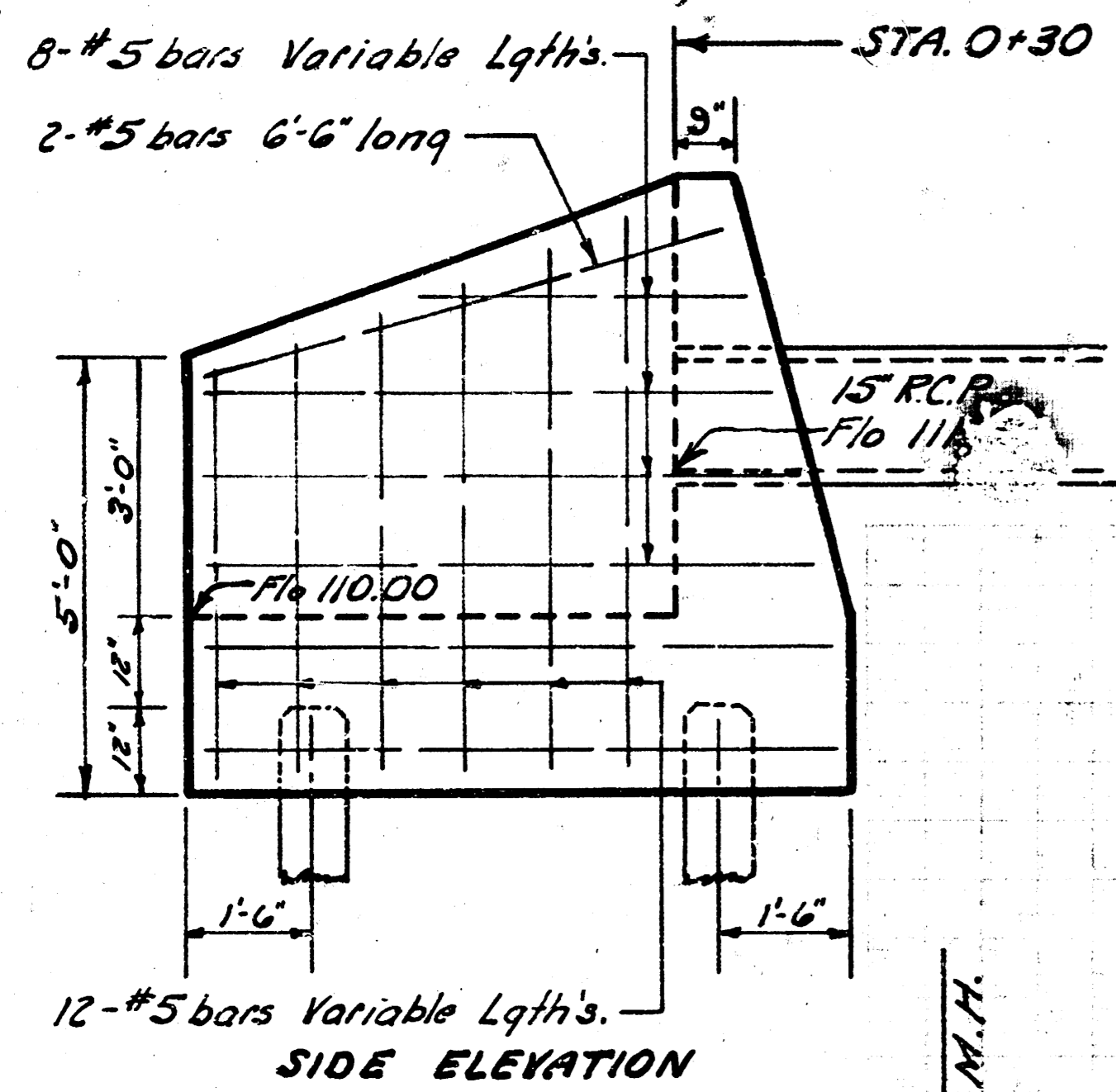
PLAN VIEW
Scale: 3/8" = 1'

BILL OF MATERIAL

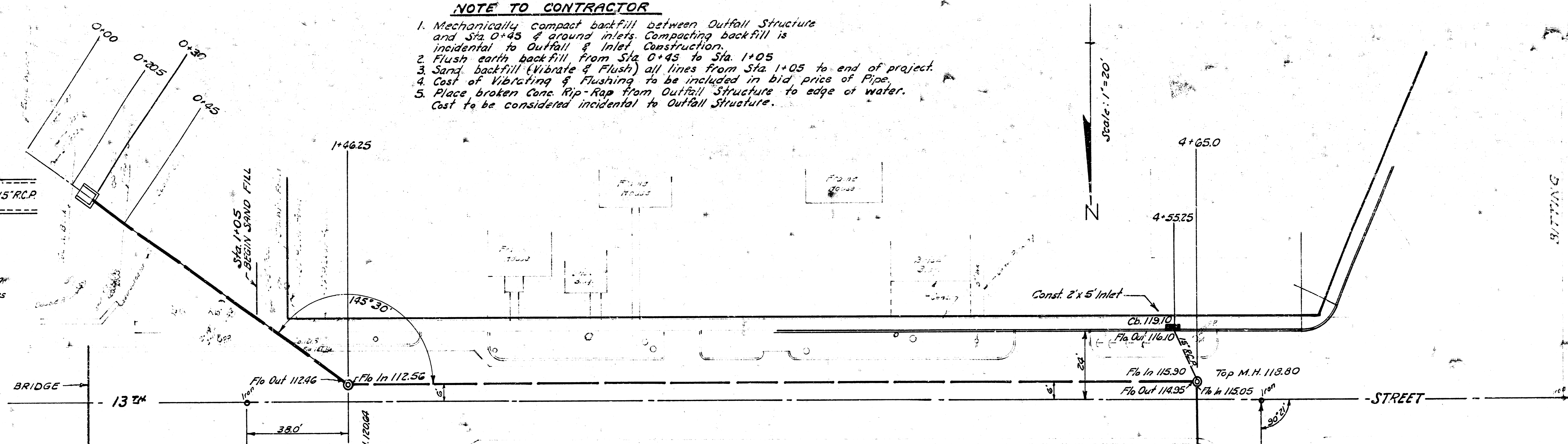
- 5 Cu. Yds. 6" Sack paving mix
- 10 Lbs. Reinf. Steel
- 4-20", 10" butt, treated timber piles



END ELEVATION

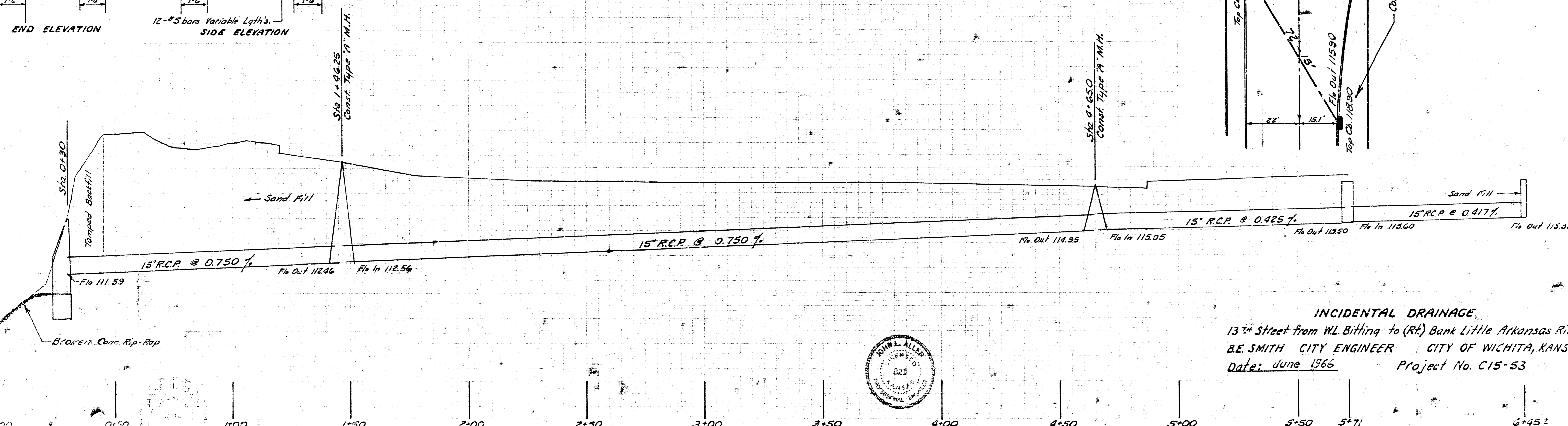


SIDE ELEVATION



B.M. 12401 W. corner of N.W. Wing to 13th Street (Minisa) Bridge
 B.M. 118.93 "G" in Globe top E. curb Jeannette St. on N.L. 13th Street.

Profile Scale: Horiz. 1" = 20'
 Vert. 1" = 4'



INCIDENTAL DRAINAGE
 13th Street from W.L. Bitting to (Rt) Bank Little Arkansas River
 B.E. SMITH CITY ENGINEER CITY OF WICHITA, KANSAS
 Date: June 1966 Project No. C15-53

