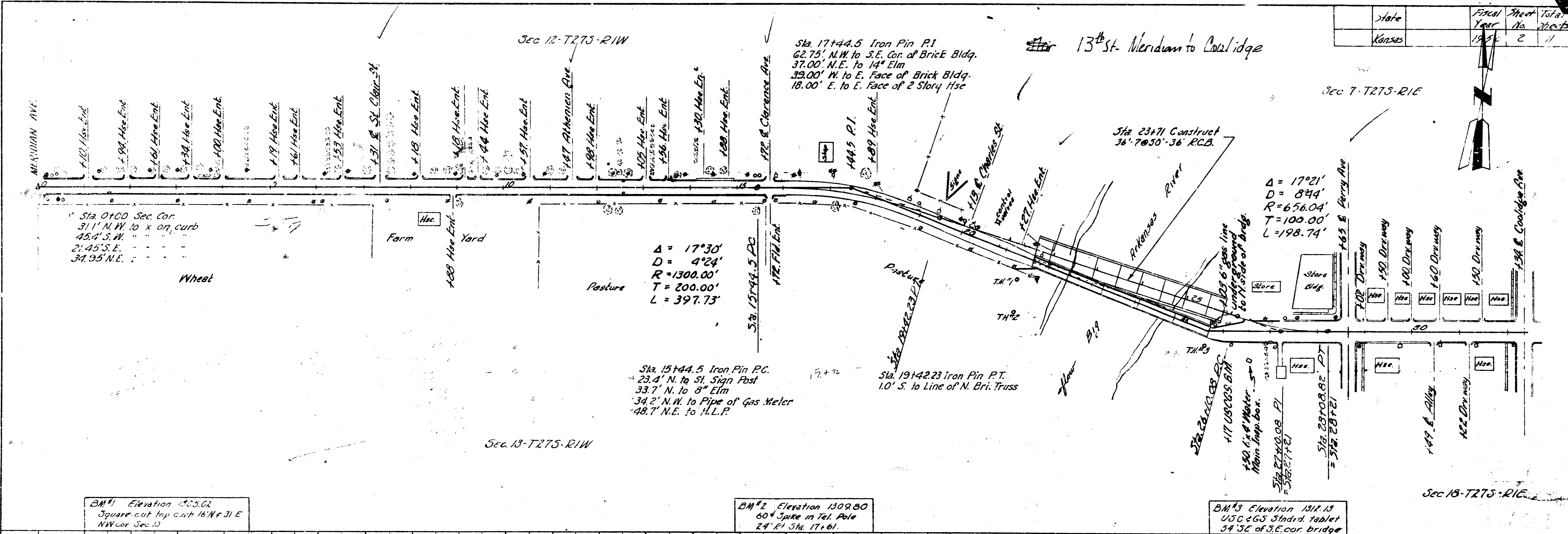


State	Fiscal Year	Sheet No.	Total Sheets
Kansas	1941	2	11

13th St. Meridian to Coolidge

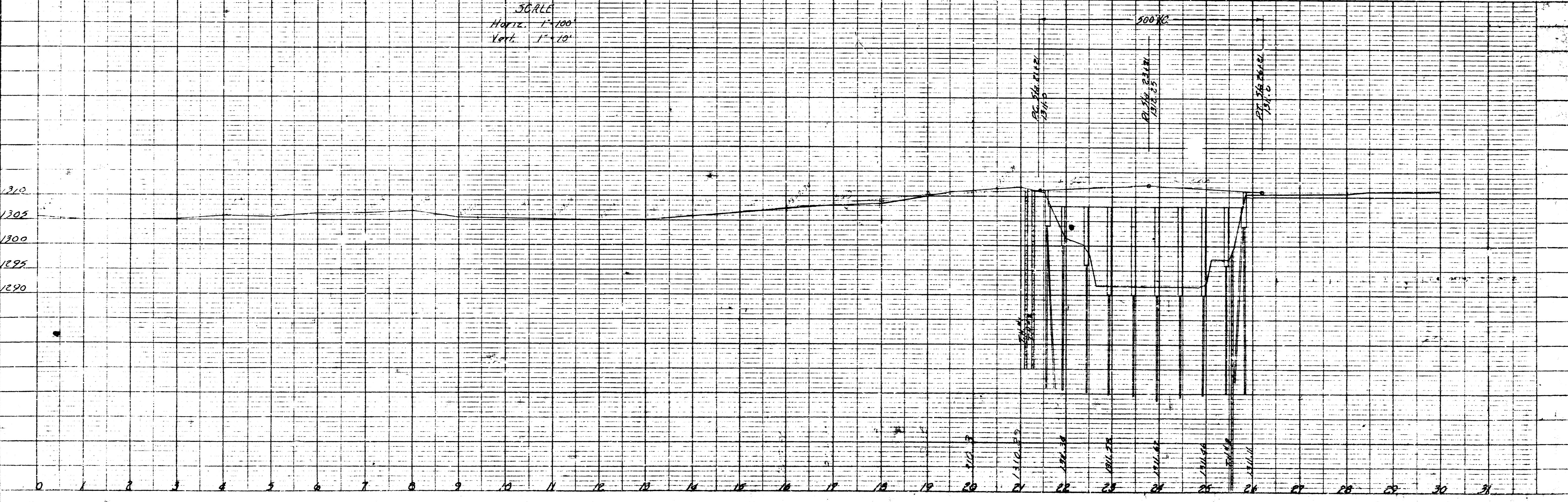


BM#1 Elevation 1230.02
Square cut top curb 18' N.E. 31 E
NW cor Sec 13

BM#2 Elevation 1309.80
60' Spike in Tel. Pole
24' E Sta. 17141

BM#3 Elevation 1311.13
450' 600' Standard tablet
34' S.E. of S.E. cor bridge

36 R.L.E.
Horiz. 1"=100'
Vert. 1"=10'



PLAN
REVISED
NOTE: DRAWN BY J. W. H. C. S. 10/21/40
BY J. W. H. C. S. 10/21/40

PROFILE
REVISED
NOTE: DRAWN BY J. W. H. C. S. 10/21/40
BY J. W. H. C. S. 10/21/40