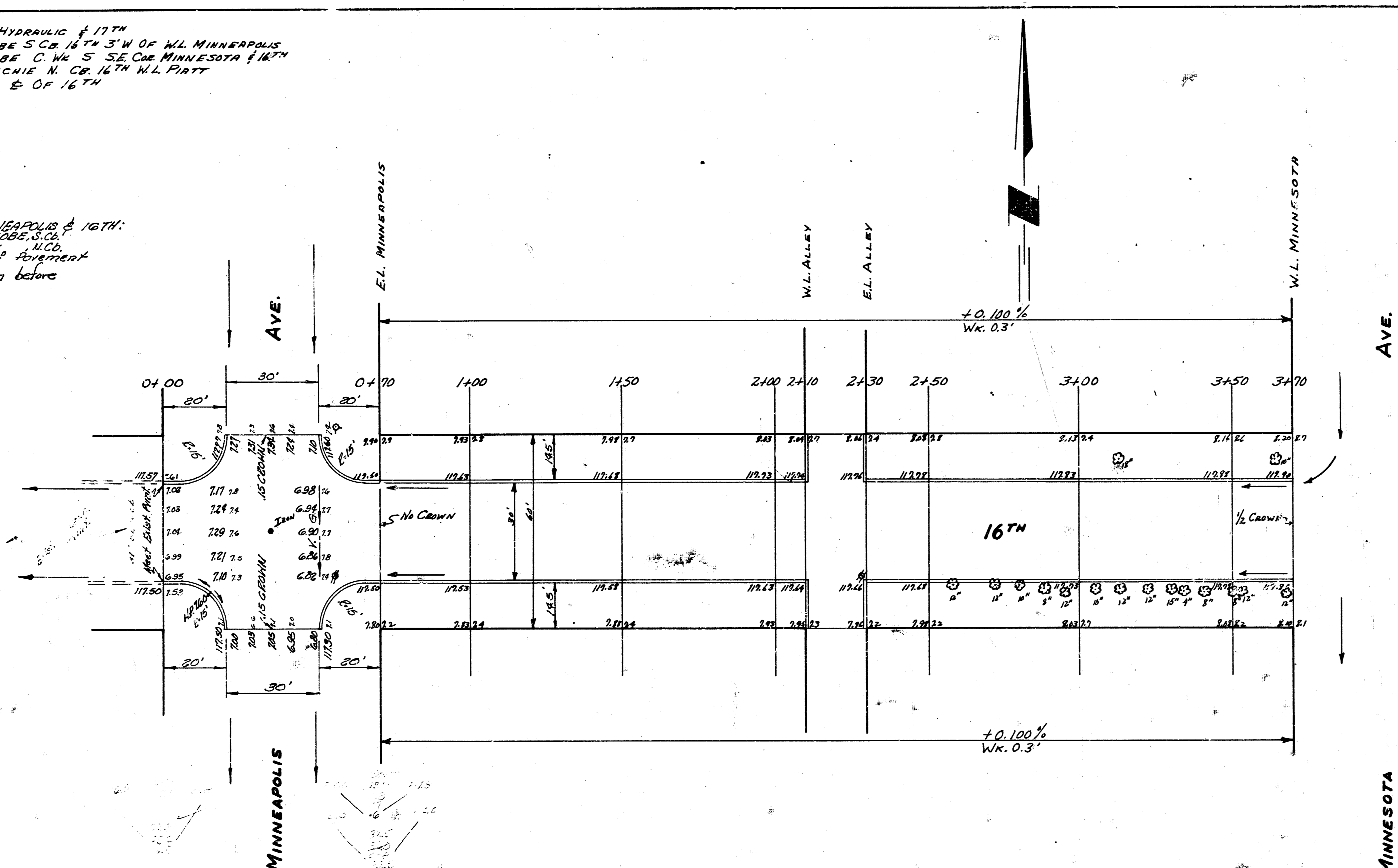


B.M. #1 117.25 STD. N.E. HYDRAULIC # 17TH
 B.M. #2 117.53 6" IN GLOBE S. CO. 16TH 3' W. OF W.L. MINNEAPOLIS
 B.M. #3 118.28 6" IN GLOBE C. W. S. SE. CO. MINNESOTA # 16TH
 B.M. #4 118.34 4" IN RITCHIE W. CO. 16TH W.L. PART
 STATION & BASE LINE E. OF 16TH

TIES TO IRON & MINNEAPOLIS & 16TH:
 4.85' S.W. 1/4 3" IN GLOBE S. CO.
 38.50' W. 1/4 1" IN GLOBE S. CO.
 35' N. to E. end of Government
 Set new ties to iron before
 construction



MINNEAPOLIS

CITY
 CUT
 2.9
 1.0%
 2.50 CUT

PROPERTY
 CUT
 1.0%
 15.6 CUBIC FEET
 1.2-2.0 CUBIC FEET

MINNESOTA



16TH
 W.L. MINNESOTA TO E.L. MINNEAPOLIS
 30' CONC. & CO.
 CITY OF WICHITA KAN.
 B.E. SMITH CITY ENGINEER
 AUG. 1934 PROJ. NO. CM-225
 2178280724 518 255