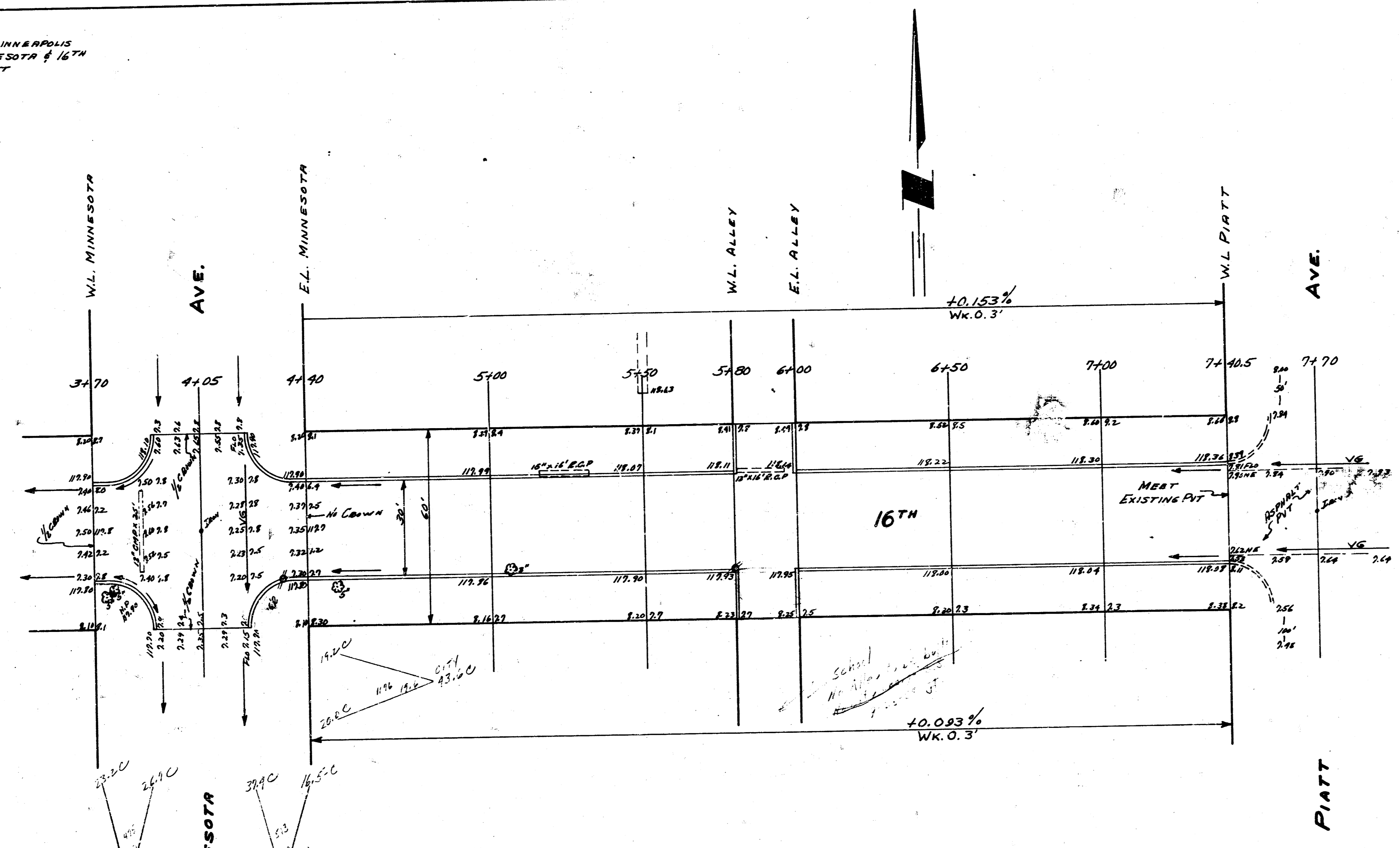


B.M.#1 117.25 STD. NE HYDRAULIC # 17TH
 B.M.#2 117.53 "6" IN GLOBE S. CO 16TH 3" W OF W.L. MINNEAPOLIS
 B.M.#3 118.28 "6" IN GLOBE "C" W. S. S.E. COR. MINNESOTA # 16TH
 B.M.#4 118.36 "2" IN ETCHING N. CO. 16TH W.L. PIATT
 STATION & BASE LINE @ 16TH



SHOWING ALL EXISTING UTILITIES
 ENCLOSURE TO BE SUBMITTED
 DISSEMINATED

TIES TO IRON & MINNESOTA # 16TH
 45.12 S. TO "6" IN GLOBE "C" W. SOUTH
 48.76 S.W. TO N.E. COR. CONC. DRIVE @ W.L.
 32.38 N.W. TO FACE ST. SIGN POST

CITY		PROPERTY	
FILL	CUT	FILL	CUT
3.3	96.9	43.5	115.5
11% .3	11% 5.9	11% 4.4	11% 17.6
3.6 CUYDS FILL	106.4 CU. YDS CUT	92.9 CUYDS FILL	137.9 CUYDS CUT



1/2

16TH
 W.L. PIATT TO W.L. MINNESOTA
 30' CONC. C.B.
 CITY OF WICHITA KAN.
 B.E. SMITH CITY ENGINEER
 AUG 1954 PROJ NO CM-224