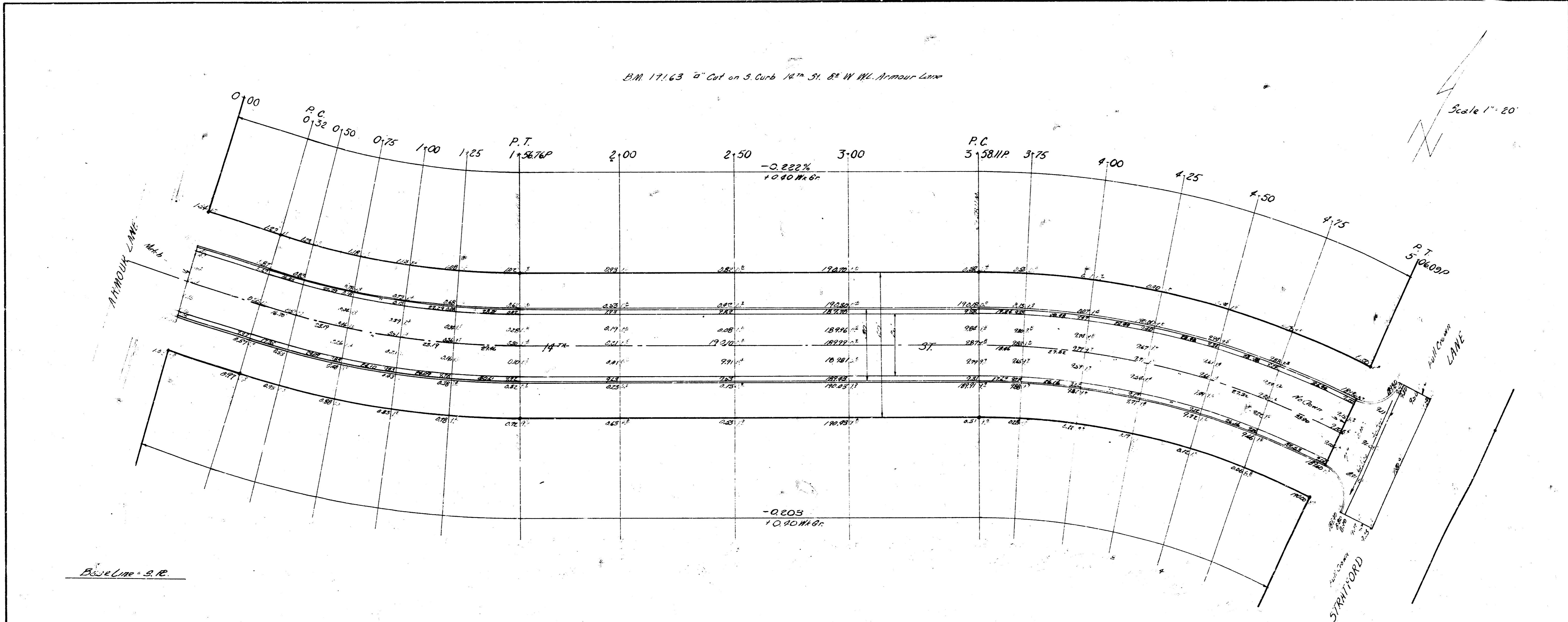


B.M. 17163 5" Cut on S. Curb 14th St. E. W. Armour Lane

Scale 1" = 20'



Station shown on this map  
Plan view  
Checked

Base Line = S.R.

Curve Data Based on S.R.  $R=4180 \Delta 17^{\circ}15'36''$

Sta.	Arc	Chord Length	Chord Length	Deflection	Chord Length
		60' S. Curb	60' S. Curb		60' S. Curb
P.C. 0+56.0				0° 00' 00"	0° 00' 00"
0+75	19.0	15.70	16.0	1° 11' 35"	1° 11' 35"
0+75	19.0	15.70	16.0	1° 11' 35"	1° 11' 35"
1+00	25.0	21.51	21.57	1° 48' 36"	1° 48' 36"
1+25	25.0	21.50	21.57	1° 48' 36"	1° 48' 36"
P.T. 1+54.76	31.76	27.62	27.62	2° 11' 35"	2° 11' 35"

Deflection Per Ft. 0.1638 min.



Curve Data Based on S.R.  $R=32300 \Delta 26^{\circ}15'$

Sta.	Arc	Chord Length	Chord Length	Deflection	Chord Length
		60' S. Curb	60' S. Curb		60' S. Curb
P.C. 2+56.11				0° 00' 00"	0° 00' 00"
3+00	43.89	17.66	17.25	1° 29' 53"	1° 29' 53"
3+00	43.89	17.66	17.25	1° 29' 53"	1° 29' 53"
3+25	24.00	23.02	22.82	2° 15' 12"	2° 15' 12"
3+25	24.00	23.02	22.82	2° 15' 12"	2° 15' 12"
3+50	25.00	23.01	22.81	2° 12' 02"	2° 12' 02"
3+75	25.00	23.00	22.80	2° 12' 02"	2° 12' 02"
P.T. 3+06.09	31.09	26.13	25.76	2° 26' 02"	2° 26' 02"

Deflection Per Ft. 0.53218 min.



Excavation		Comp. Fill	
PROP.	CY	PROP.	CY
14.2%	59.5	1.2	1.0%
TOTAL CY	65.5	1.2	1.0%
	30.9		



14TH ST.  
E. W. Armour Lane to E. L. Strickland Lane  
26'-2'-30" A.C.  
City of Wichita, Kansas  
BE Smith, City Engineer  
Date SEPT. 1953 Proj No 010-87