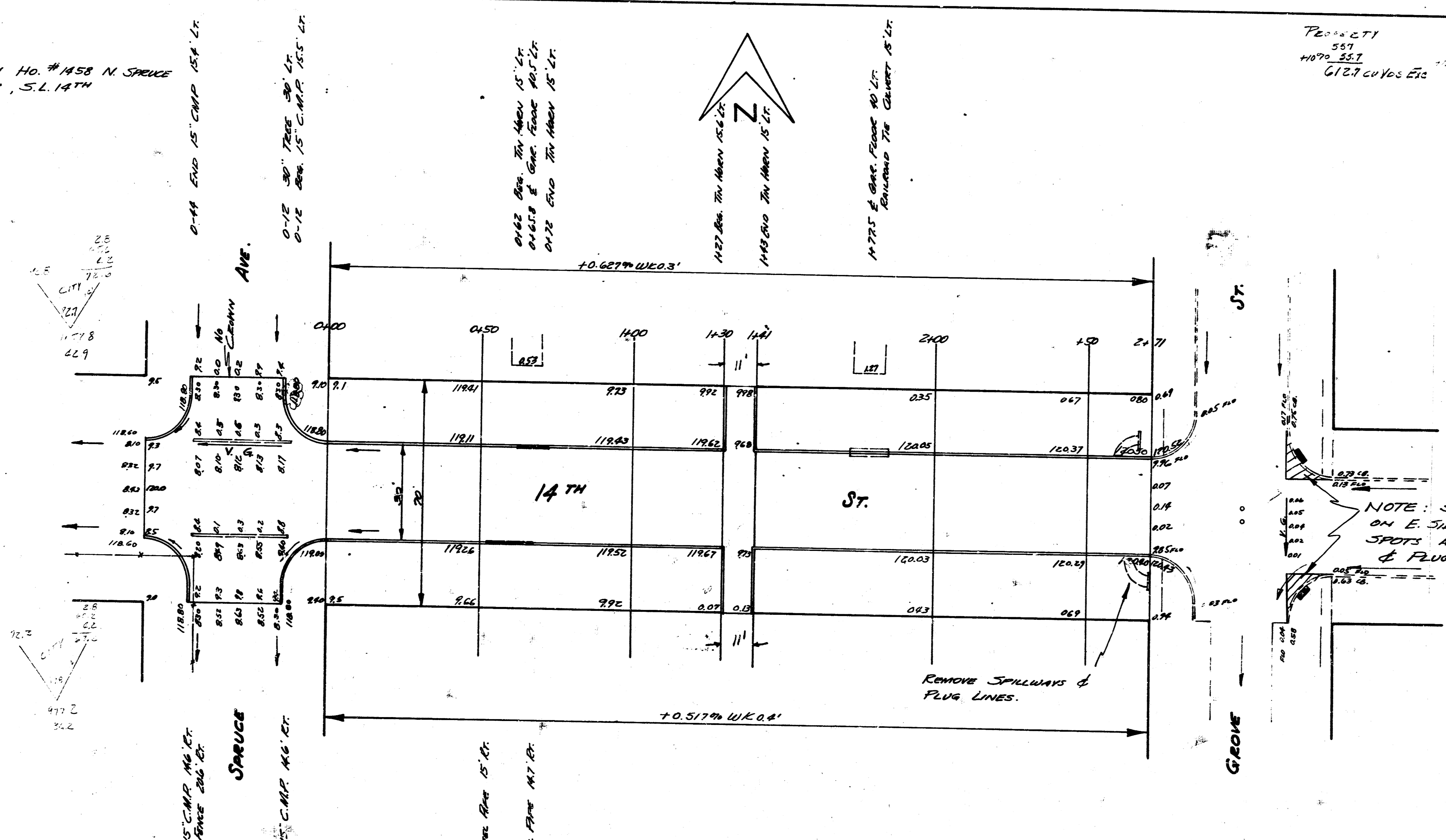


B.M. 121.97 N.W. COR. CONC. PAVCH. HO. # 1458 N. SPRUCE
B.M. 122.34 "X" ON E. CO. POPLAR, S.L. 14TH

PROJ. CITY
551 237.2
1070 227 194 217
G.P.C. CIVIL ENG. 23 0.9



NOTE: SAW & REMOVE BOTH RADII ON E. SIDE TO ELIMINATE LOW SPOTS AT C.B.S. REMOVE C.B.S. & PLUG LINES.



1
2

14TH ST.
W.L. SPRUCE TO H.L. GROVE
30' CONC. & CG.
CITY OF WICHITA, KANSAS
L.K. WHITE - CITY ENGINEER
SEPT. 1952 PROJ. C12-75