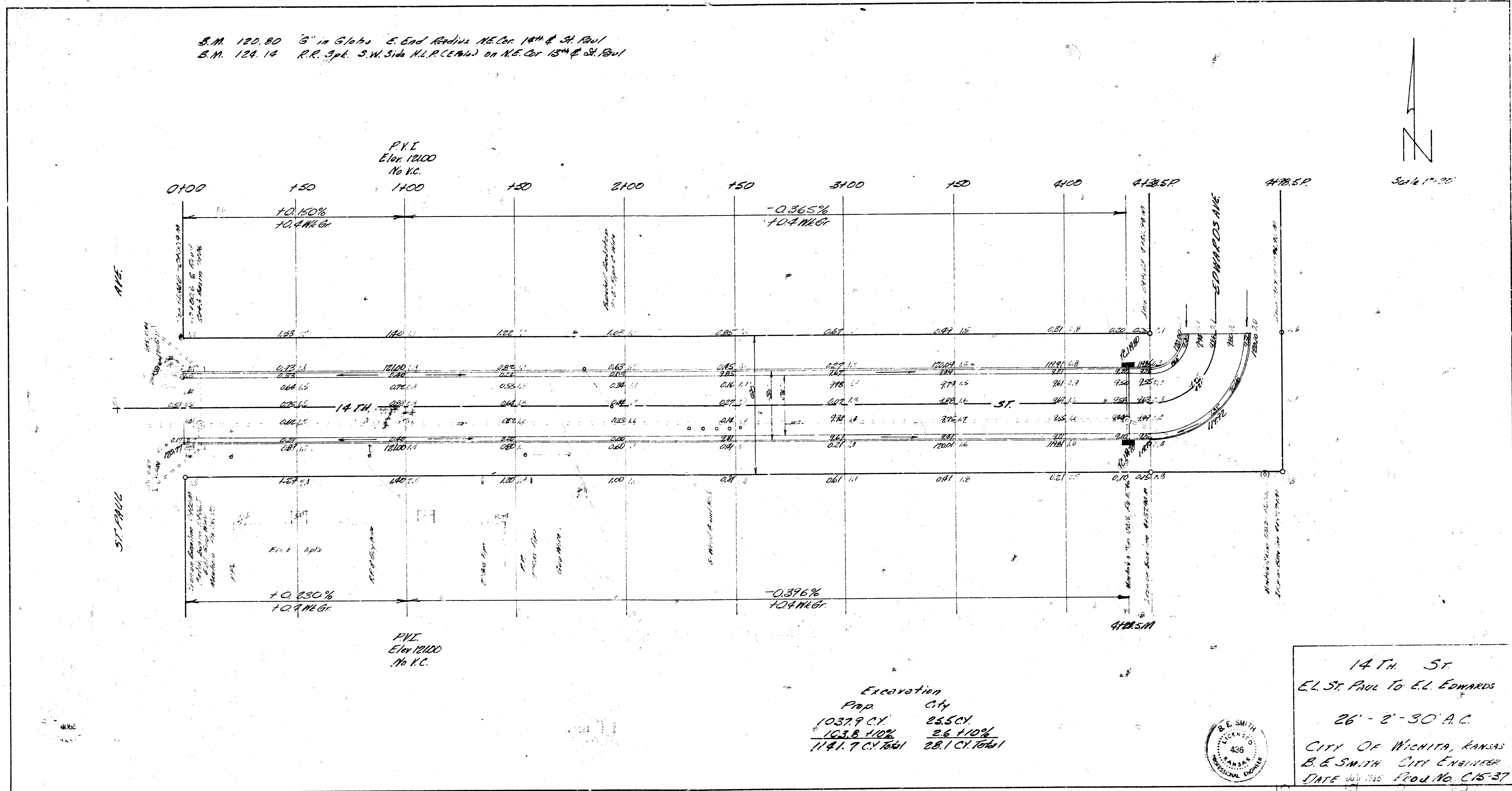


S.M. 120.80 3" in G1644 E. End Radius NE Cor. 14th & St. Paul
 S.M. 124.14 R.R. 3rd S.W. Side H.L.P. (C.P. 144) on NE Cor. 15th & St. Paul

Blank 14/16/20
 Blank 14/16/20
 Blank 14/16/20



14th St.
 EL. ST. PAUL TO EL. EDWARDS
 26' - 2" - 30' A.C.
 CITY OF WICHITA, KANSAS
 B. & SMITH CITY ENGINEERS
 DATE July 1916 Proj. No. C15-37

