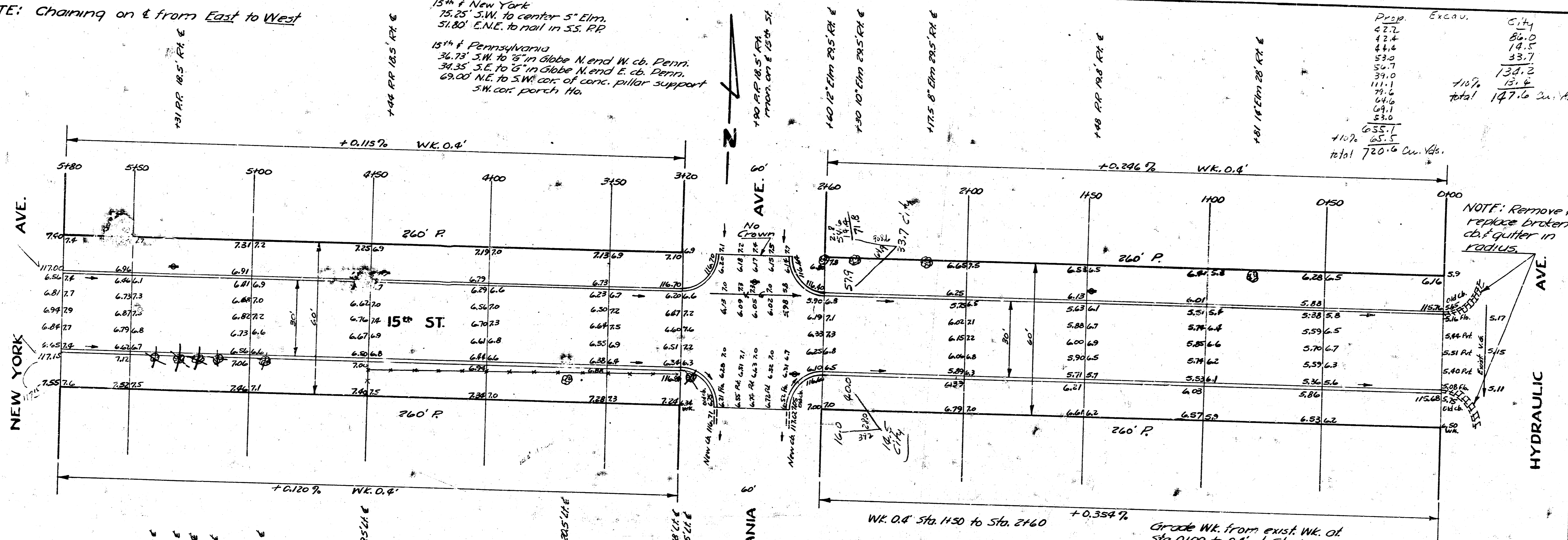


B.M. 117.03 '6 in Globe L. Co. Pennsylvania, S.L. 154

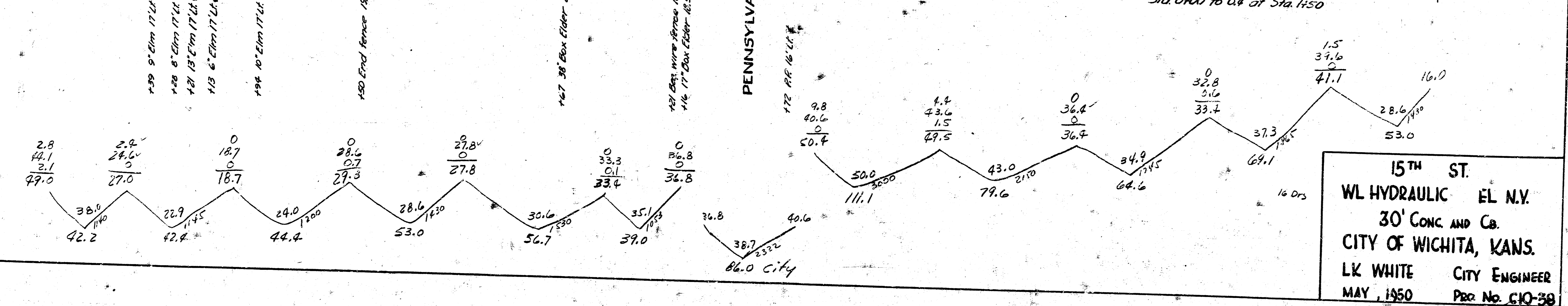
NOTE: Chaining on & from East to West

TIES TO IRONS:

15th St. New York
 75.25' S.W. to center 5" Elm.
 51.80' E.N.E. to nail in S.S. RR
 15th St. Pennsylvania
 34.73' S.W. to 5" in Globe N. and W. Co. Penn.
 34.35' S.E. to 5" in Globe N. and E. Co. Penn.
 69.00' N.E. to S.W. cor. of conc. pillar support
 S.W. cor. porch Ho.



Prop.	Excav.	City
42.7	42.7	86.0
44.4	44.4	18.7
53.0	53.0	33.7
56.7	56.7	139.2
39.0	39.0	15.4
111.1	111.1	18.4
71.6	71.6	147.6
64.6	64.6	
69.1	69.1	
8.0	8.0	
655.7		
110.7		
65.5		
total 720.6 Cu. Yds.		



15th ST.
 WL HYDRAULIC EL. N.Y.
 30' CONC. AND Cb.
 CITY OF WICHITA, KANS.
 LK WHITE CITY ENGINEER
 MAY, 1950 PER No. C10-30

50