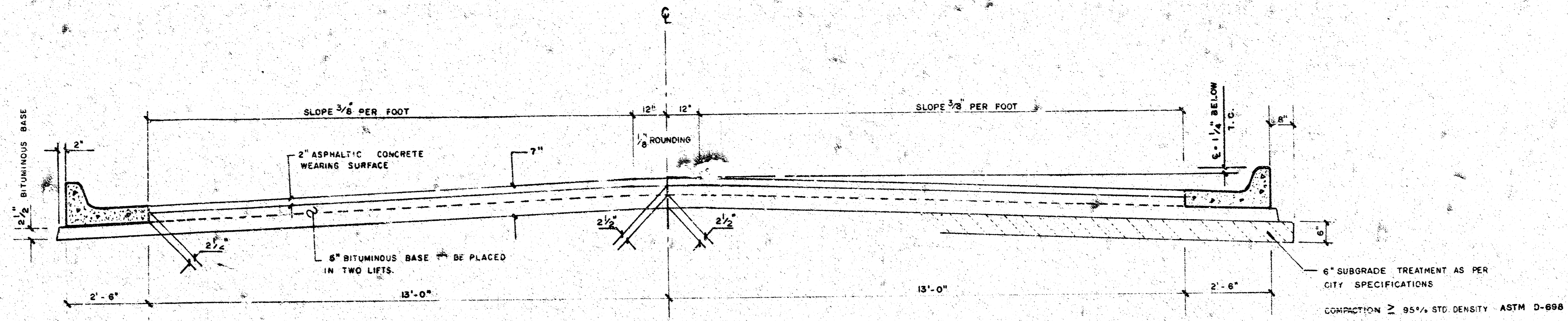


PROJECT DESCRIPTION		
11TH STREET		
E-L SMITH TO W-L ANNA		
PROJECT NUMBER		
472-76-245-81152-000-000-001		
BOOK NO. MG 28	APPROVED BY	DATE 6-22-82
DRAWN BY A.Y.S.		REVISED
CITY OF WICHITA		
DEPARTMENT OF ENGINEERING		
DIRECTOR OF ENGR/CITY ENGINEER		
R. W. BRUGGEMAN		
SCALE		1" = 20'

e 14



TYPICAL SECTION

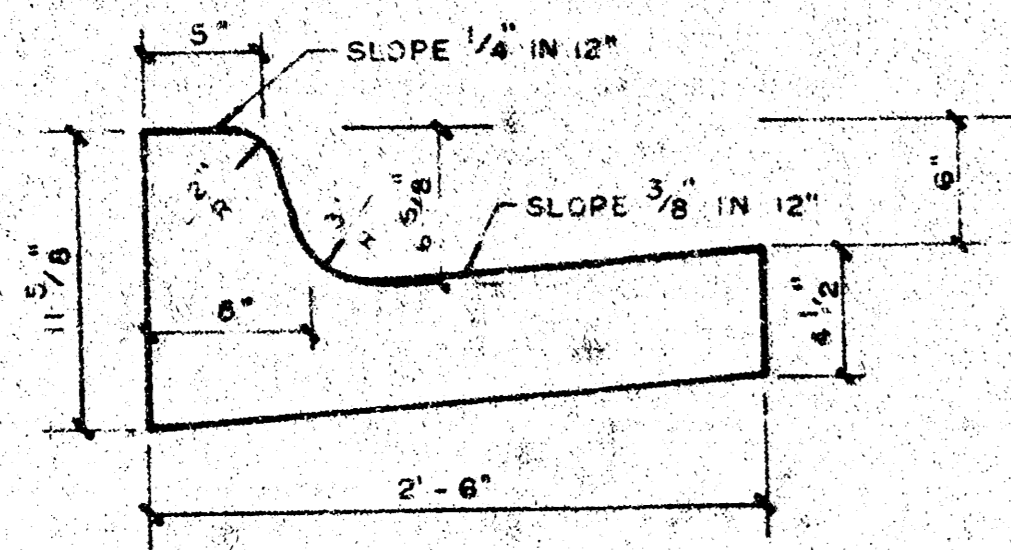
31' ASPHALTIC CONCRETE PAVEMENT WITH BITUMINOUS BASE

A TACK COAT OF EMULSIFIED ASPH (SS-IH or CSS-IH) SHALL BE APPLIED AT AN APPROXIMATE RATE 0.05 GALLONS PER SQ YD BETWEEN LIFTS OF ASPHALTIC MATERIALS WHEN ORDERED BY THE ENGINEER. TACK COAT WILL NOT BE PAID DIRECTLY AND SHALL BE CONSIDERED AS SUBSIDIARY TO PRICE BID FOR ASPHALTIC PAVEMENT.

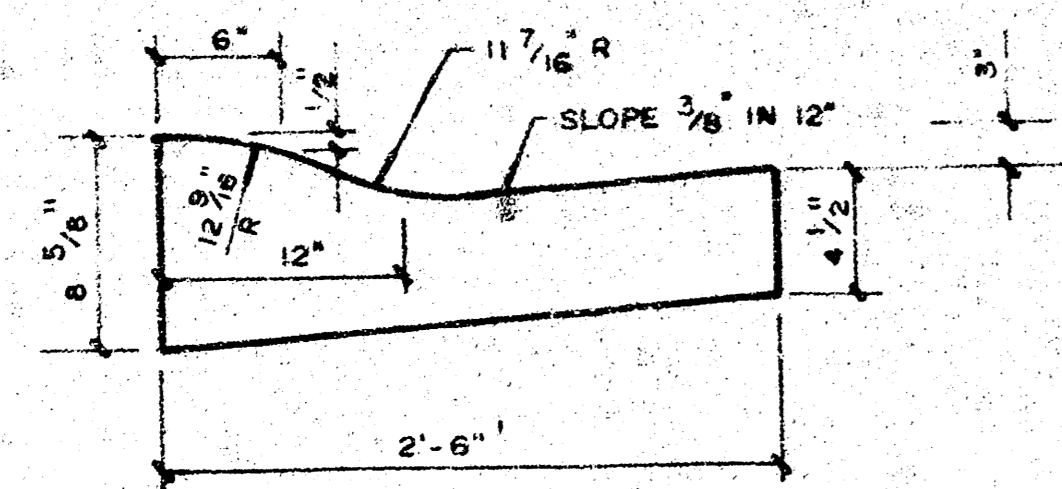
BITUMINOUS BASE AND ASPHALTIC CONCRETE WEARING SURFACE SHALL BE PLACED WITH A LAYDOWN MACHINE HAVING AUTOMATIC CONTROLS FOR CROWN AND GRADE. CONSTRUCTION JOINTS IN EACH LIFT SHALL BE STAGGERED A MINIMUM DISTANCE OF 1' WITH JOINTS IN PRECEDING LIFTS AND PLACED SUCH THAT A JOINT WILL BE CONSTRUCTED ON THE CENTERLINE IN THE TOP LIFT.

THE A.C. PAVEMENT UNDER THE COMBINED CURB AND GUTTER SHALL BE PAID AS SQ YDS 7" A.C. PAVEMENT (5" BITUMINOUS BASE).
THE BITUMINOUS BASE UNDER THE COMBINED CURB AND GUTTER SHALL BE PAID AS SQ YDS 2 1/2" BITUMINOUS BASE.

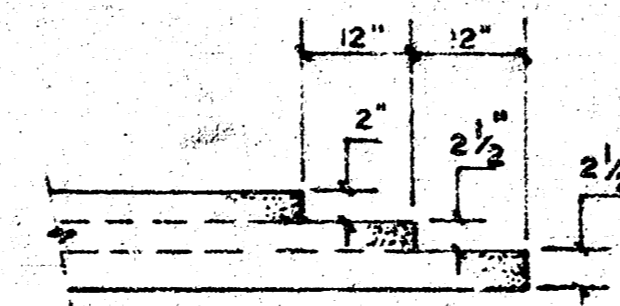
COMBINED CURB & GUTTER



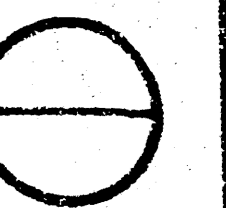
ROLL TYPE CURB & GUTTER



DETAIL OF TRANSVERSE CONSTRUCTION JOINTS

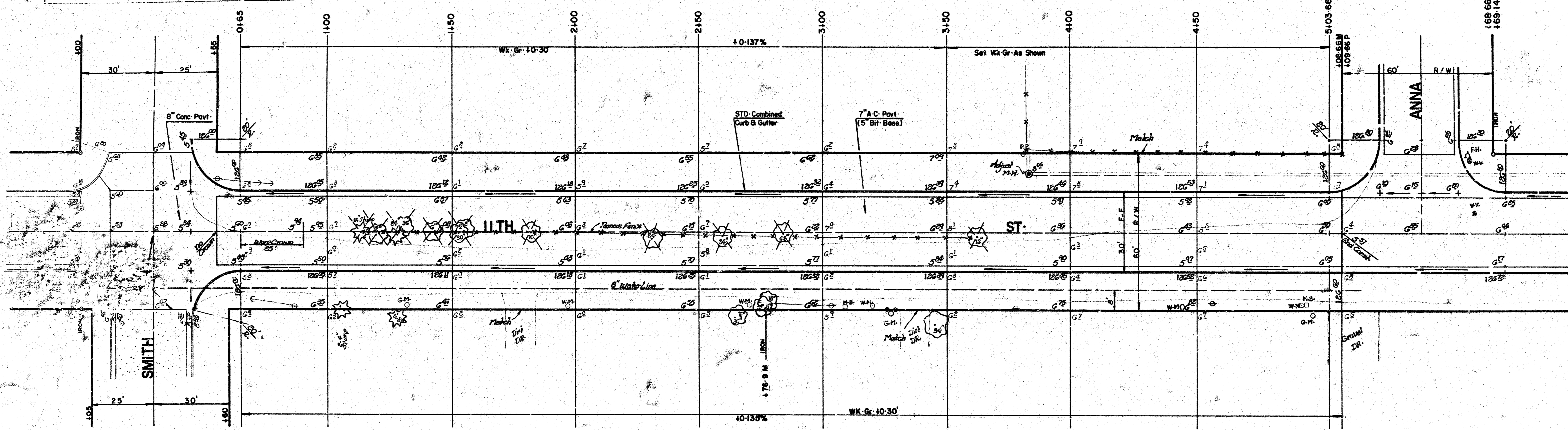
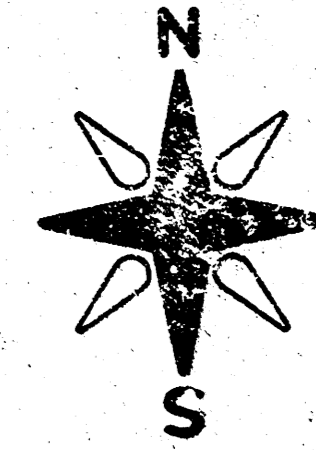


TRANSVERSE CONSTRUCTION JOINTS SHALL BE CONSTRUCTED IN FLEXIBLE BASE PAVEMENTS AT LOCATIONS WHERE PAVEMENT TEMPORARILY ENDS TO FACILITATE FUTURE PAVEMENT CONSTRUCTION AS SHOWN BY DETAIL. THE COST OF CONSTRUCTING THE TRANSVERSE CONSTRUCTION JOINTS SHALL NOT BE MEASURED OR PAID FOR DIRECTLY BUT SHALL BE INCLUDED IN THE BID PRICE FOR SQUARE YARDS OF A.C. PAVEMENT.



B.M. #126-934 Baker & 11TH ST. N. City STD. Disc., 26'E & 32'S Of ξ Both
 B.M. #128-49 'M' Mueller Fire Hydrant N.E. Corner Anna & 11th ST. N.
 B.L. is 10' S. Of ξ .

- 152.0 S.Y. 8" Concrete Pavement
- 9.2 S.Y. 2" Concrete Curb, Pavement (.5" Bituminous Base)
- 1-5 S.Y. 2" Concrete
- 5-1 L.F. 6" Concrete
- 51-8 L.F. Integral Curb
- 74-4 S.Y. 2" Concrete
- 19-6 S.Y. 2" Concrete
- 163-1 S.Y. Multiple
- 2-0 Tons Lime or Cement
- S.Y. 1/2" Concrete & Asphaltic Concrete Base



- Notes:**
1. Trees & Stumps To Be Removed Are Marked All Trees & Stumps Which In The Opinion Of Field Engineer Can Be Saved Shall Be Saved.
 2. No More Than (6-20) Driveways Approaches Or The Equivalent To Be Constructed.
 3. Remove & Replace All Mail Boxes In This Project.

THE CONTRACTOR SHALL BE RESPONSIBLE FOR PRESERVING PROPERTY IRONS. THE CONTRACTOR SHALL BE REQUIRED TO ESTABLISH ANY PROPERTY IRONS WHICH ARE DAMAGED OR DESTROYED BY HIS CONSTRUCTION OPERATIONS. SUCH IRONS SHALL BE RE-ESTABLISHED BY A LICENSED LAND SURVEYOR OR A LICENSED PROFESSIONAL ENGINEER IN ACCORDANCE WITH STATE LAWS.

	PROP	CITY
Excavation	743.80 CY	74.40 C.Y.
+ 10%	74.32	7.44
Total	817.52 CY	81.84 C.Y.
Manipulation	1621.15 SY	163.10 S.Y.

SUB-GRADE
 TYPE OF SUB-GRADE TREATMENT SHALL BE DETERMINED BY THE FIELD ENGINEER. SUB-GRADE TREATMENT MAY CONSIST OF LIME TREATMENT, CEMENT TREATMENT, SUB-GRADE MODIFICATION, OR ANY COMBINATION OF THESE.

PROJECT DESCRIPTION
11TH STREET
 E. L. SMITH TO W. L. ANNA 3/7
 PROJECT NUMBER
 472-76-245-81152-000-000-901

