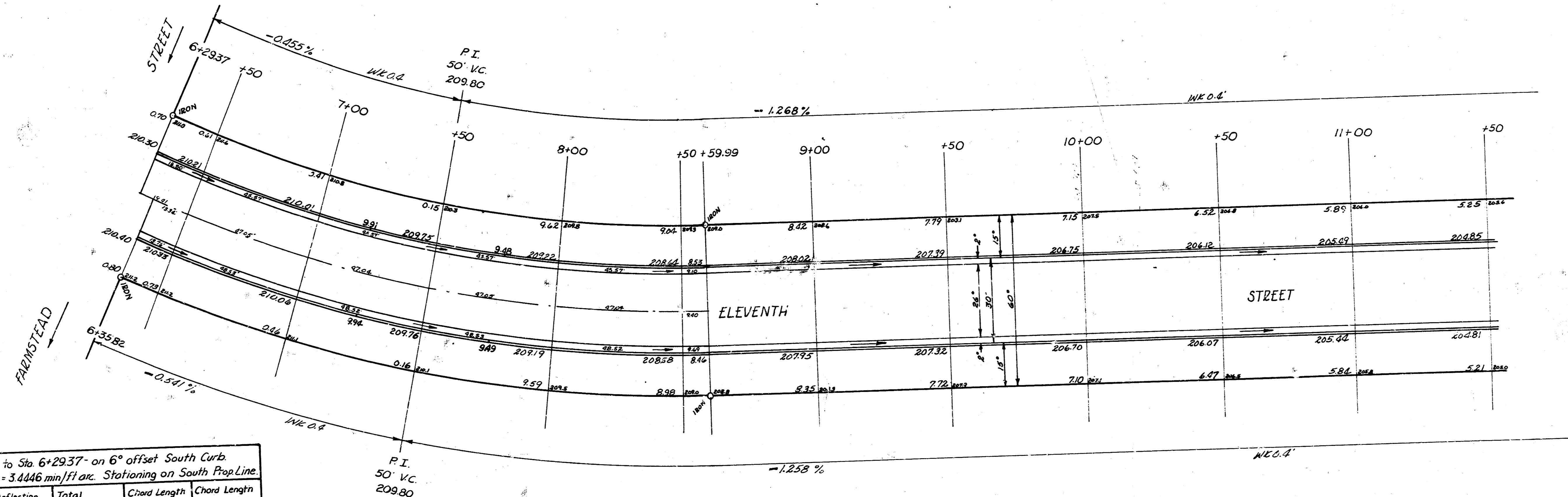
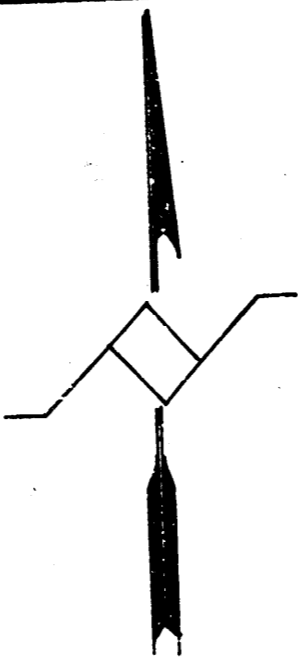


BM 21294 NE cor conc porch Hs 1207 farmstead  
 BM 20204 NE cor Flat slab, McEwan Stone Monument NW cor 11th & Woodlawn, extreme N end of monument.  
 Base Line of Chaining on S Property Line.



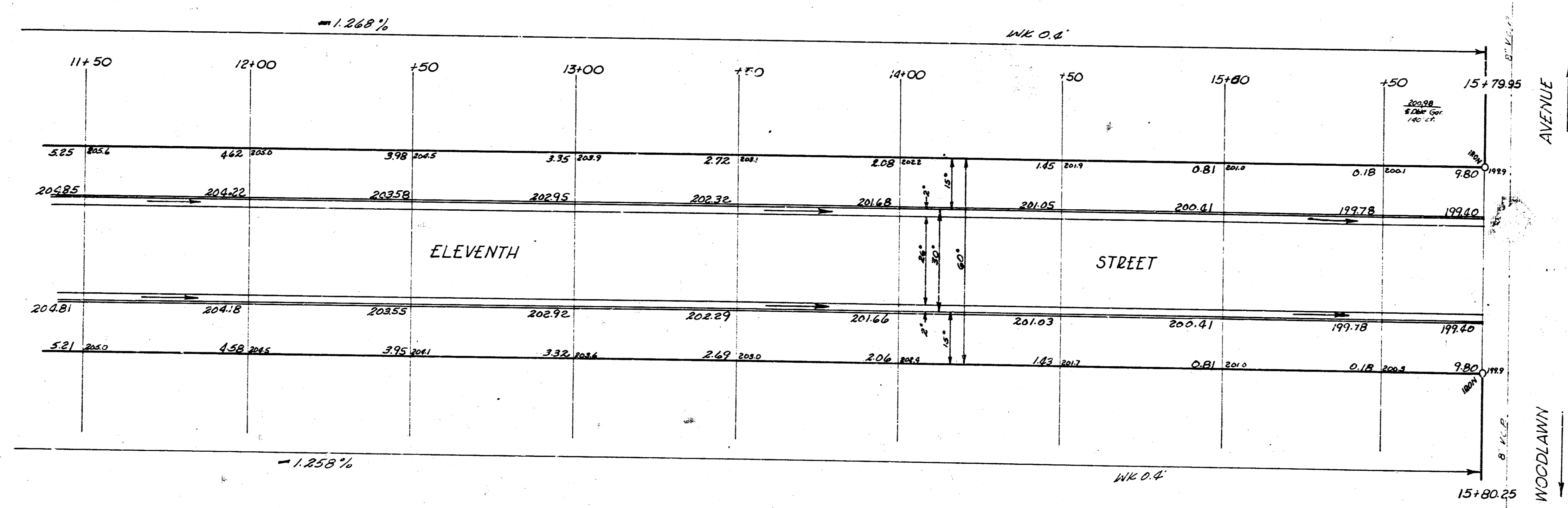
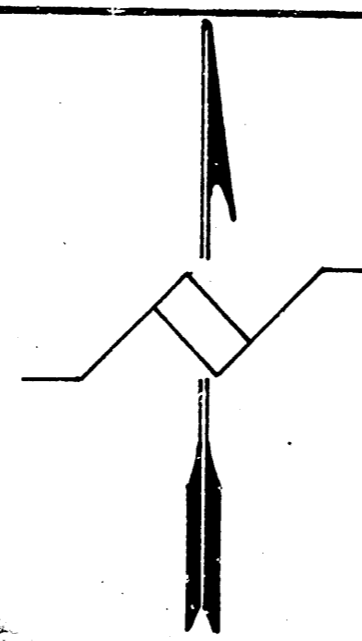
CURVE DATA Sta. 8+59.99 to Sta. 6+29.37 on 6" offset South Curb.  
 $R = 499.0'$   $\Delta = 25^\circ 17'$  Defl. = 3.4446 min/ft arc. Stationing on South Prop. Line.

STATION	Arc Length 6" offset S. cb.	Deflection Angle	Total Deflection	Chord Length 6" offset S. cb.	Chord Length 6" offset N. cb.
PT 8+59.99					
+50	9.80	0° 38' 45"	0° 38' 45"	9.80	8.97
8+00	49.12	2° 49' 12"	3° 28' 57"	49.10	44.97
+50	49.12	2° 49' 12"	6° 18' 09"	49.10	44.97
7+00	49.12	2° 49' 12"	9° 01' 21"	49.10	44.97
+50	49.12	2° 49' 12"	11° 50' 33"	49.10	44.97
6+35.82	13.92	0° 47' 57"	12° 38' 30"	13.92	12.75
6+29.37	8.84	0° 21' 50"	13° 00' 20"		8.81

Sheet 1 of 4.

**ELEVENTH STREET**  
 EL Farmstead to WL Woodlawn  
 26-2.30 AC  
 CITY OF WICHITA, KANSAS  
 B.E. SMITH CITY ENGINEER  
 MAY 1957 PROJ. NO. C16-140





Sheet 2 of 4  
ELEVENTH STREET  
EL Farmstead to WL Woodlawn  
PROJ. NO. C16-140